



Patentamientos por Marcas - Mercado Total

	may/09(a)	abr/09(b)	may/08(c)	may/07(d)	Var a-b	Var a-c	Var a-d	Ac. 09	Ac. 08	Var 09-08
Automovil	31.468	31.606	42.162	35.037	-0,44%	-25,36%	-10,19%	183.035	216.490	-15,45%
Comercial Liviano	6.968	7.310	11.070	8.989	-4,68%	-37,06%	-22,48%	42.201	55.646	-24,16%
Comercial Pesado	952	990	2.223	2.002	-3,84%	-57,17%	-52,45%	5.970	10.631	-43,84%
Otros Pesados	670	623	1.354	1.203	7,54%	-50,52%	-44,31%	3.687	6.756	-45,43%
Total	40.058	40.529	56.809	47.231	-1,16%	-29,49%	-15,19%	234.893	289.523	-18,87%
Prom. diario	2.108	2.133	2.705	2.249				2.373	2.811	
Dias habiles	19	19	21	21				99	103	

Patentamientos por origen		
	09-May	Ac. 09
Importados	22.941	139.450
Nacionales	17.117	95.443



■ Importados ■ Nacionales

Patentamientos Mensuales

	ene	feb	mar	abr	may	jun	jul	ago	sep	oct	nov	dic
2009	73.928	39.075	41.303	40.529	40.058							
2008	85.811	46.477	44.277	56.149	56.809	49.082	58.414	51.110	56.197	51.036	35.528	19.891
Var% 09-08	-13,85%	-15,93%	-6,72%	-27,82%	-29,49%	-100,00%	-100,00%	-100,00%	-100,00%	-100,00%	-100,00%	-100,00%
2007	82.552	38.841	47.379	41.626	47.231	42.139	50.182	54.285	48.857	49.497	40.640	24.528
2006	65.984	32.425	40.400	34.249	38.284	36.566	36.948	39.123	39.642	36.009	33.252	17.725

Patentamientos por Marcas - Totales

Marca	2009		2009		2008		2008		Var				
	ene - may	Part %	ene - may	Part %	ene - may	Part %	2009-2008						
Volkswagen	7.656	19,45%	10.471	18,88%	7.526	18,87%	-26,88%	1,73%	43.939	19,01%	48.924	17,30%	-10,19%
Chevrolet	5.760	14,63%	7.580	13,67%	5.691	14,27%	-24,01%	1,21%	32.611	14,11%	40.600	14,36%	-19,68%
Ford	4.761	12,09%	6.339	11,43%	5.405	13,55%	-24,89%	-11,91%	29.887	12,93%	35.240	12,46%	-15,19%
Renault	4.937	12,54%	7.578	13,67%	5.205	13,05%	-34,85%	-5,15%	27.533	11,91%	35.368	12,51%	-22,15%
Fiat	3.921	9,96%	5.573	10,05%	4.323	10,84%	-29,64%	-9,30%	22.694	9,82%	30.590	10,82%	-25,81%
Peugeot	4.264	10,83%	5.507	9,93%	3.577	8,97%	-22,57%	19,21%	22.290	9,64%	29.167	10,32%	-23,58%
Toyota	2.191	5,57%	2.949	5,32%	2.188	5,48%	-25,70%	0,14%	14.213	6,15%	14.004	4,95%	1,49%
Citroen	1.648	4,19%	2.009	3,62%	1.812	4,54%	-17,97%	-9,05%	10.012	4,33%	12.159	4,30%	-17,66%
Honda	1.071	2,72%	1.691	3,05%	1.165	2,92%	-36,66%	-8,07%	7.967	3,45%	9.172	3,24%	-13,14%
Mercedes Benz	770	1,96%	1.355	2,44%	745	1,87%	-43,17%	3,36%	4.906	2,12%	6.928	2,45%	-29,19%
Suzuki	515	1,31%	1.002	1,81%	459	1,15%	-48,60%	12,20%	2.855	1,24%	3.755	1,33%	-23,97%
Nissan	295	0,75%	738	1,33%	284	0,71%	-60,03%	3,87%	1.887	0,82%	2.973	1,05%	-36,53%
Hyundai	243	0,62%	456	0,82%	254	0,64%	-46,71%	-4,33%	1.685	0,73%	1.949	0,69%	-13,55%
Audi	198	0,50%	305	0,55%	189	0,47%	-35,08%	4,76%	1.464	0,63%	1.658	0,59%	-11,70%
BMW	174	0,44%	217	0,39%	124	0,31%	-19,82%	40,32%	1.046	0,45%	1.453	0,51%	-28,01%
Kia	158	0,40%	262	0,47%	152	0,38%	-39,69%	3,95%	974	0,42%	1.417	0,50%	-31,26%
Iveco	180	0,46%	484	0,87%	175	0,44%	-62,81%	2,86%	948	0,41%	2.079	0,74%	-54,40%
Dodge	61	0,15%	28	0,05%	84	0,21%	117,86%	-27,38%	640	0,28%	423	0,15%	51,30%
Scania	57	0,14%	131	0,24%	85	0,21%	-56,49%	-32,94%	532	0,23%	738	0,26%	-27,91%
Jeep	103	0,26%	168	0,30%	69	0,17%	-38,69%	49,28%	498	0,22%	823	0,29%	-39,49%
Chery	111	0,28%		0,00%	92	0,23%	N/D	20,65%	466	0,20%		0,00%	N/D
Chrysler	61	0,15%	86	0,16%	55	0,14%	-29,07%	10,91%	464	0,20%	619	0,22%	-25,04%
Mitsubishi	48	0,12%	169	0,30%	43	0,11%	-71,60%	11,63%	336	0,15%	862	0,30%	-61,02%
Volvo	41	0,10%	111	0,20%	29	0,07%	-63,06%	41,38%	306	0,13%	577	0,20%	-46,97%
Agrale	43	0,11%	58	0,10%	51	0,13%	-25,86%	-15,69%	292	0,13%	238	0,08%	22,69%
Seat	20	0,05%	30	0,05%	29	0,07%	-33,33%	-31,03%	228	0,10%	153	0,05%	49,02%
Mini	23	0,06%	35	0,06%	23	0,06%	-34,29%	0,00%	162	0,07%	213	0,08%	-23,94%
Subaru	33	0,08%	57	0,10%	24	0,06%	-42,11%	37,50%	154	0,07%	268	0,09%	-42,54%
Puma de Tat	2	0,01%	28	0,05%	15	0,04%	-92,86%	-86,67%	64	0,03%	162	0,06%	-60,49%
Land Rover	7	0,02%	19	0,03%	8	0,02%	-63,16%	-12,50%	46	0,02%	107	0,04%	-57,01%
Porsche	5	0,01%	18	0,03%	7	0,02%	-72,22%	-28,57%	37	0,02%	108	0,04%	-65,74%
Mack	4	0,01%		0,00%	3	0,01%	N/D	33,33%	8	0,00%		0,00%	N/D
Ferrari	1	0,00%		0,00%	1	0,00%	N/D	0,00%	3	0,00%	1	0,00%	200,00%
Hummer	2	0,01%		0,00%		0,00%	N/D	N/D	2	0,00%	1	0,00%	100,00%
Jaguar	1	0,00%		0,00%		0,00%	N/D	N/D	1	0,00%	1	0,00%	0,00%
Lexus	1	0,00%		0,00%		0,00%	N/D	N/D	1	0,00%		0,00%	N/D
Alfa Romeo		0,00%	1	0,00%		0,00%	-100,00%	N/D		0,00%	23	0,01%	-100,00%
Lamborghini		0,00%		0,00%		0,00%	N/D	N/D		0,00%	1	0,00%	-100,00%
Total	39.366		55.455		39.892				231.151		282.754		

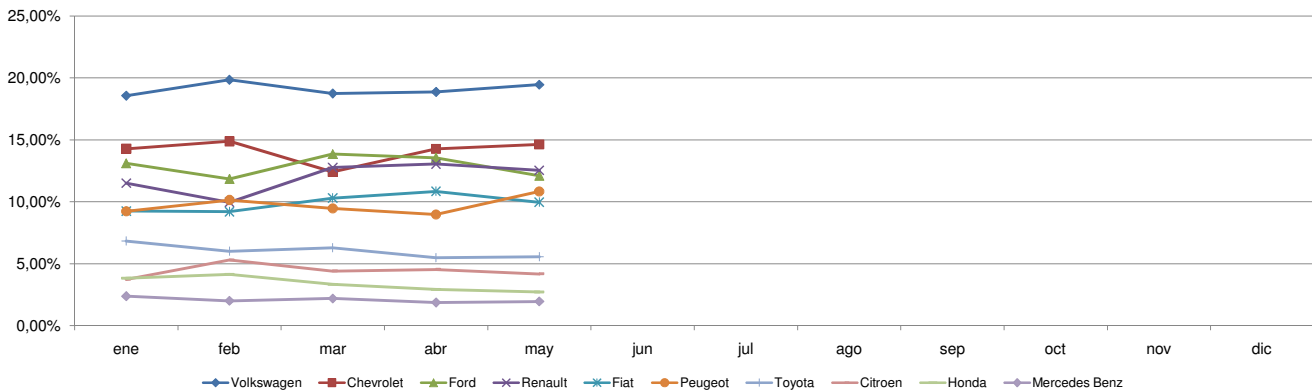


Patentamientos por Marcas - Mercado Total

Patentamientos por Marcas - Autos + Livianos									2009	2009	2008	2008	Var
Marca	may/09(a)	Part %	may/08(c)	Part %	abr/09(e)	Part %	Var a-c	Var a-e	ene - may	Part %	ene - may	Part %	2009-2008
Volkswagen	7.565	19,68%	10.201	19,16%	7.424	19,08%	-25,84%	1,90%	43.384	19,26%	47.552	17,47%	-8,77%
Chevrolet	5.760	14,99%	7.580	14,24%	5.691	14,62%	-24,01%	1,21%	32.611	14,48%	40.600	14,92%	-19,68%
Ford	4.580	11,92%	5.893	11,07%	5.211	13,39%	-22,28%	-12,11%	28.868	12,82%	33.071	12,15%	-12,71%
Renault	4.924	12,81%	7.502	14,09%	5.195	13,35%	-34,36%	-5,22%	27.452	12,19%	35.078	12,89%	-21,74%
Fiat	3.921	10,20%	5.573	10,47%	4.323	11,11%	-29,64%	-9,30%	22.694	10,08%	30.590	11,24%	-25,81%
Peugeot	4.264	11,10%	5.507	10,35%	3.577	9,19%	-22,57%	19,21%	22.290	9,90%	29.167	10,72%	-23,58%
Toyota	2.191	5,70%	2.949	5,54%	2.188	5,62%	-25,70%	0,14%	14.213	6,31%	14.004	5,15%	1,49%
Citroen	1.648	4,29%	2.009	3,77%	1.812	4,66%	-17,97%	-9,05%	10.012	4,45%	12.159	4,47%	-17,66%
Honda	1.071	2,79%	1.691	3,18%	1.165	2,99%	-36,66%	-8,07%	7.967	3,54%	9.172	3,37%	-13,14%
Suzuki	515	1,34%	1.002	1,88%	459	1,18%	-48,60%	12,20%	2.855	1,27%	3.755	1,38%	-23,97%
Mercedes Benz	376	0,98%	591	1,11%	349	0,90%	-36,38%	7,74%	2.398	1,06%	3.137	1,15%	-23,56%
Nissan	295	0,77%	738	1,39%	284	0,73%	-60,03%	3,87%	1.887	0,84%	2.973	1,09%	-36,53%
Hyundai	225	0,59%	436	0,82%	240	0,62%	-48,39%	-6,25%	1.612	0,72%	1.895	0,70%	-14,93%
Audi	198	0,52%	305	0,57%	189	0,49%	-35,08%	4,76%	1.464	0,65%	1.658	0,61%	-11,70%
BMW	174	0,45%	217	0,41%	124	0,32%	-19,82%	40,32%	1.046	0,46%	1.453	0,53%	-28,01%
Kia	158	0,41%	262	0,49%	152	0,39%	-39,69%	3,95%	974	0,43%	1.417	0,52%	-31,26%
Dodge	61	0,16%	28	0,05%	84	0,22%	117,86%	-27,38%	640	0,28%	423	0,16%	51,30%
Jeep	103	0,27%	168	0,32%	69	0,18%	-37,69%	49,28%	498	0,22%	823	0,30%	-39,49%
Chery	111	0,29%		0,00%	92	0,24%	N/D	20,65%	466	0,21%		0,00%	N/D
Chrysler	61	0,16%	86	0,16%	55	0,14%	-29,07%	10,91%	464	0,21%	619	0,23%	-25,04%
Iveco	65	0,17%	130	0,24%	80	0,21%	-50,00%	-18,75%	348	0,15%	615	0,23%	-43,41%
Mitsubishi	48	0,12%	169	0,32%	43	0,11%	-71,60%	11,63%	336	0,15%	862	0,32%	-61,02%
Seat	20	0,05%	30	0,06%	29	0,07%	-33,33%	-31,03%	228	0,10%	153	0,06%	49,02%
Mini	23	0,06%	35	0,07%	23	0,06%	-34,29%	0,00%	162	0,07%	213	0,08%	-23,94%
Subaru	33	0,09%	57	0,11%	24	0,06%	-42,11%	37,50%	154	0,07%	268	0,10%	-42,54%
Volvo	24	0,06%	35	0,07%	17	0,04%	-31,43%	41,18%	115	0,05%	237	0,09%	-51,48%
Land Rover	7	0,02%	19	0,04%	8	0,02%	-63,16%	-12,50%	46	0,02%	107	0,04%	-57,01%
Porsche	5	0,01%	18	0,03%	7	0,02%	-72,22%	-28,57%	37	0,02%	108	0,04%	-65,74%
Ferrari	1	0,00%		0,00%	1	0,00%	N/D	0,00%	3	0,00%	1	0,00%	200,00%
Hummer	2	0,01%		0,00%		0,00%	N/D	N/D	2	0,00%	1	0,00%	100,00%
Agrale		0,00%		0,00%		0,00%	N/D	N/D	1	0,00%		0,00%	N/D
Jaguar	1	0,00%		0,00%		0,00%	N/D	N/D	1	0,00%	1	0,00%	0,00%
Lexus	1	0,00%		0,00%		0,00%	N/D	N/D	1	0,00%		0,00%	N/D
Alfa Romeo		0,00%	1	0,00%		0,00%	-100,00%	N/D		0,00%	23	0,01%	-100,00%
Lamborghini		0,00%		0,00%		0,00%	N/D	N/D		0,00%	1	0,00%	-100,00%
Total	38.431		53.232		38.915				225.229		272.136		

Patentamientos por Marcas - Camiones + Buses									2009	2009	2008	2008	Var
Marca	may/09(a)	Part %	may/08(c)	Part %	abr/09(e)	Part %	Var a-c	Var a-e	ene - may	Part %	ene - may	Part %	2009-2008
Mercedes Benz	394	42,14%	764	34,37%	396	40,53%	-48,43%	-0,51%	2.508	42,35%	3.791	35,70%	-33,84%
Ford	181	19,36%	446	20,06%	194	19,86%	-59,42%	-6,70%	1.019	17,21%	2.169	20,43%	-53,02%
Iveco	115	12,30%	354	15,92%	95	9,72%	-67,51%	21,05%	600	10,13%	1.464	13,79%	-59,02%
Volkswagen	91	9,73%	270	12,15%	102	10,44%	-66,30%	-10,78%	555	9,37%	1.372	12,92%	-59,55%
Scania	57	6,10%	131	5,89%	85	8,70%	-56,49%	-32,94%	532	8,98%	738	6,95%	-27,91%
Agrale	43	4,60%	58	2,61%	51	5,22%	-25,86%	-15,69%	291	4,91%	238	2,24%	22,27%
Volvo	17	1,82%	76	3,42%	12	1,23%	-77,63%	41,67%	191	3,23%	340	3,20%	-43,82%
Renault	13	1,39%	76	3,42%	10	1,02%	-82,89%	30,00%	81	1,37%	290	2,73%	-72,07%
Hyundai	18	1,93%	20	0,90%	14	1,43%	-10,00%	28,57%	73	1,23%	54	0,51%	35,19%
Puma de Tat	2	0,21%	28	1,26%	15	1,54%	-92,86%	-86,67%	64	1,08%	162	1,53%	-60,49%
Mack	4	0,43%		0,00%	3	0,31%	N/D	33,33%	8	0,14%		0,00%	N/D
Total	935		2.223		977				5.922		10.618		

Participacion por Marcas - Evolucion Mensual

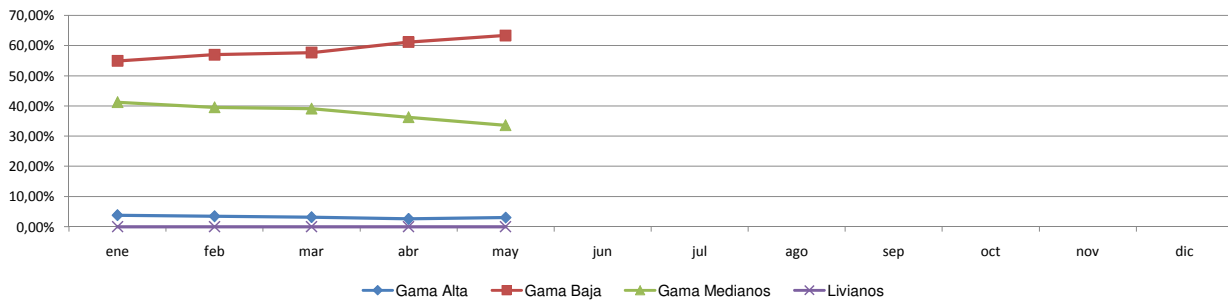




Patentamientos por Ranking de Automoviles - Mercado Total

Rank.	Ranking Por Modelos - Automoviles										
	Modelo	may/09 (a)	may/08 (b)	abr/09 (c)	Var a-b	Var a-c	Ac. 09	Part %	Ac. 08	Part %	Var 09-08
1	Chevrolet CORSA	2.703	2.977	2.104	-9,20%	28,47%	12.193	6,66%	16.774	7,75%	-27,31%
2	Peugeot 207 COMPACT	2.015		1.743	N/D	15,61%	11.150	6,09%		0,00%	N/D
3	Volkswagen GOL TREND	1.884		2.021	N/D	-6,78%	10.109	5,52%		0,00%	N/D
4	Ford ECOSPORT	1.305	1.422	1.253	-8,23%	4,15%	8.020	4,38%	8.303	3,84%	-3,41%
5	Volkswagen GOL	1.320	4.539	1.242	-70,92%	6,28%	7.507	4,10%	18.716	8,65%	-59,89%
6	Volkswagen SURAN	1.205	1.417	1.232	-14,96%	-2,19%	7.054	3,85%	7.623	3,52%	-7,46%
7	Renault CLIO	1.079	2.192	1.176	-50,78%	-8,25%	6.949	3,80%	7.948	3,67%	-12,57%
8	Ford FIESTA	825	1.158	929	-28,76%	-11,19%	5.250	2,87%	6.331	2,92%	-17,07%
9	Volkswagen BORA	603	887	474	-32,02%	27,22%	4.953	2,71%	4.894	2,26%	1,21%
10	Fiat SIENA	855	1.186	937	-27,91%	-8,75%	4.900	2,68%	6.319	2,92%	-22,46%
11	Ford KA	783	980	843	-20,10%	-7,12%	4.598	2,51%	3.722	1,72%	23,54%
12	Honda FIT	601	721	686	-16,64%	-12,39%	4.526	2,47%	4.034	1,86%	12,20%
13	Peugeot 307	778	1.377	656	-43,50%	18,60%	4.441	2,43%	8.843	4,08%	-49,78%
14	Fiat PALIO	748	950	875	-21,26%	-14,51%	4.399	2,40%	5.509	2,54%	-20,15%
15	Citroen C4	633	779	770	-18,74%	-17,79%	4.289	2,34%	4.872	2,25%	-11,97%
16	Chevrolet ASTRA	318	1.032	467	-69,19%	-31,91%	4.003	2,19%	5.220	2,41%	-23,31%
17	Fiat UNO	665	1.095	708	-39,27%	-6,07%	3.917	2,14%	5.929	2,74%	-33,93%
18	Toyota COROLLA	617	1.018	444	-39,39%	38,96%	3.701	2,02%	2.928	1,35%	26,40%
19	Renault SANDERO	663	616	730	7,63%	-9,18%	3.688	2,01%	2.356	1,09%	56,54%
20	Volkswagen VOYAGE	796		756	N/D	5,29%	3.582	1,96%		0,00%	N/D
21	Volkswagen FOX/CROSSFOX	566	1.248	531	-54,65%	6,59%	3.232	1,77%	6.265	2,89%	-48,41%
22	Chevrolet MERIVA	471	700	583	-32,71%	-19,21%	2.868	1,57%	3.882	1,79%	-26,12%
23	Chevrolet CORSA II	559	751	390	-25,57%	43,33%	2.826	1,54%	4.264	1,97%	-33,72%
24	Ford FOCUS	409	753	570	-45,68%	-28,25%	2.804	1,53%	5.019	2,32%	-44,13%
25	Renault MEGANE	165	871	430	-81,06%	-61,63%	2.643	1,44%	5.959	2,75%	-55,65%
26	Ford FOCUS II	342		503	N/D	-32,01%	2.475	1,35%		0,00%	N/D
27	Fiat PALIO WEEKEND	401	272	391	47,43%	2,56%	2.457	1,34%	2.216	1,02%	10,88%
28	Renault KANGOO	408	609	438	-33,00%	-6,85%	2.420	1,32%	4.027	1,86%	-39,91%
29	Renault MEGANE II	464	467	397	-0,64%	16,88%	2.237	1,22%	2.737	1,26%	-18,27%
30	Volkswagen VENTO	427	334	379	27,84%	12,66%	2.029	1,11%	2.561	1,18%	-20,77%
31	Chevrolet AVEO	290		384	N/D	-24,48%	2.024	1,11%		0,00%	N/D
32	Fiat PUNTO	348	728	358	-52,20%	-2,79%	2.015	1,10%	4.033	1,86%	-50,04%
33	Chevrolet SPARK	247		464	N/D	-46,77%	1.956	1,07%		0,00%	N/D
34	Peugeot 206	654	2.919	329	-77,60%	98,78%	1.940	1,06%	14.420	6,66%	-86,55%
35	Citroen C3	368	431	378	-14,62%	-2,65%	1.885	1,03%	2.928	1,35%	-35,62%
36	Renault SYMBOL	552		472	N/D	16,95%	1.841	1,01%		0,00%	N/D
37	Renault LOGAN	398	674	438	-40,95%	-9,13%	1.727	0,94%	2.794	1,29%	-38,19%
38	Chevrolet CORSA SW	364	420	407	-13,33%	-10,57%	1.716	0,94%	2.428	1,12%	-29,32%
39	Honda CIVIC	207	472	255	-56,14%	-18,82%	1.651	0,90%	2.778	1,28%	-40,57%
40	Suzuki FUN	330	830	186	-60,24%	77,42%	1.499	0,82%	2.775	1,28%	-45,98%
41	Nissan TIIDA	217	382	216	-43,19%	0,46%	1.349	0,74%	1.288	0,59%	4,74%
42	Volkswagen GOL COUNTRY	178	457	184	-61,05%	-3,26%	1.197	0,65%	1.674	0,77%	-28,49%
43	Chevrolet VECTRA	143	399	240	-64,16%	-40,42%	1.171	0,64%	1.673	0,77%	-30,01%
44	Citroen PICASSO	185	206	220	-10,19%	-15,91%	1.151	0,63%	1.263	0,58%	-8,87%
45	Fiat IDEA	168	404	139	-58,42%	20,86%	966	0,53%	2.297	1,06%	-57,95%
46	Renault SCENIC	168	281	182	-40,21%	-7,69%	869	0,47%	1.321	0,61%	-34,22%
47	Citroen BERLINGO	142	247	135	-42,51%	5,19%	770	0,42%	1.426	0,66%	-46,00%
48	Peugeot PARTNER	99	282	93	-64,89%	6,45%	740	0,40%	1.515	0,70%	-51,16%
49	Mercedes Benz CLASE C	95	155	87	-38,71%	9,20%	660	0,36%	828	0,38%	-20,29%
50	Audi A4	94	76	72	23,68%	30,56%	653	0,36%	476	0,22%	37,18%
51	Otros	1.612	2.448	1.709	-34,15%	-5,68%	10.033	5,48%	13.322	6,15%	-24,69%
Total		31.467	42.162	31.606			183.033	1	216.490		

Autos - Participacion por Segmento





Patentamientos por Ranking de Livianos y Pesados - Mercado Total

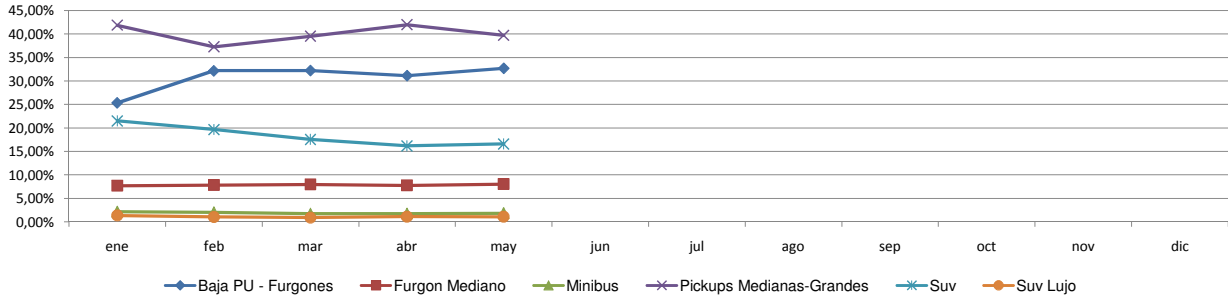
Rank.	Comercial Liviano										
	Modelo	may/09 (a)	may/08 (b)	abr/09 (c)	Var a-b	Var a-c	Ac. 09	Part %	Ac. 08	Part %	Var 09-08
1	Toyota HILUX	1.337	1.555	1.507	-14,02%	-11,28%	8.546	20,25%	8.726	15,68%	-2,06%
2	Ford RANGER	773	1.259	896	-38,60%	-13,73%	4.286	10,16%	7.638	13,73%	-43,89%
3	Renault KANGOO FURGON	764	1.356	682	-43,66%	12,02%	3.580	8,48%	5.832	10,48%	-38,61%
4	Chevrolet S-10	499	860	473	-41,98%	5,50%	2.711	6,42%	4.415	7,93%	-38,60%
5	Peugeot PARTNER FURGON	405	712	486	-43,12%	-16,67%	2.530	6,00%	3.098	5,57%	-18,33%
6	Fiat FIORINO	413	656	420	-37,04%	-1,67%	2.224	5,27%	2.676	4,81%	-16,89%
7	Citroen BERLINGO FURGON	278	311	260	-10,61%	6,92%	1.653	3,92%	1.540	2,77%	7,34%
8	Honda CRV	216	421	196	-48,69%	10,20%	1.485	3,52%	2.148	3,86%	-30,87%
9	Volkswagen SAVEIRO	272	417	232	-34,77%	17,24%	1.475	3,50%	1.539	2,77%	-4,16%
10	Mercedes Benz SPRINTER	199	350	190	-43,14%	4,74%	1.221	2,89%	1.790	3,22%	-31,79%
11	Toyota HILUX SW4	140	203	124	-31,03%	12,90%	1.037	2,46%	1.255	2,26%	-17,37%
12	Renault MASTER	204	325	150	-37,23%	36,00%	1.026	2,43%	1.517	2,73%	-32,37%
13	Ford F 100	71	212	107	-66,51%	-33,64%	848	2,01%	1.290	2,32%	-34,26%
14	Suzuki GRAND VITARA	82	111	159	-26,13%	-48,43%	756	1,79%	498	0,89%	51,81%
15	Toyota RAV 4	63	59	87	6,78%	-27,59%	671	1,59%	273	0,49%	145,79%
16	Fiat STRADA	47	56	72	-16,07%	-34,72%	489	1,16%	526	0,95%	-7,03%
17	Chery TIGGO	111		92	N/D	20,65%	466	1,10%		0,00%	N/D
18	Hyundai TUCSON	71	136	59	-47,79%	20,34%	462	1,09%	658	1,18%	-29,79%
19	Kia K2700	61	52	68	17,31%	-10,29%	386	0,91%	219	0,39%	76,26%
20	Hyundai SANTA FE	61	150	49	-59,33%	24,49%	380	0,90%	551	0,99%	-31,03%
21	Otros	897	1.869	1.000	-52,01%	-10,30%	5.964	14,13%	9.457	16,99%	-36,94%
Total		6.964	11.070	7.309			42.196	1	55.646		

Rank.	Comercial Pesado										
	Modelo	may/09 (a)	may/08 (b)	abr/09 (c)	Var a-b	Var a-c	Ac. 09	Part %	Ac. 08	Part %	Var 09-08
1	Mercedes Benz BMO 384	79		41	N/D	92,68%	397	6,70%		0,00%	N/D
2	Mercedes Benz L-1624	63	51	52	23,53%	21,15%	362	6,11%	451	4,25%	-19,73%
3	Ford CARGO 1722 E	61	178	54	-65,73%	12,96%	330	5,57%	835	7,86%	-60,48%
4	Iveco 170 E	68	144	49	-52,78%	38,78%	289	4,88%	538	5,07%	-46,28%
5	Mercedes Benz 1315	56	99	58	-43,43%	-3,45%	260	4,39%	333	3,14%	-21,92%
6	Ford F-4000	45	116	47	-61,21%	-4,26%	257	4,34%	473	4,45%	-45,67%
7	Mercedes Benz OF 1418	18	146	49	-87,67%	-63,27%	228	3,85%	511	4,81%	-55,38%
8	Volkswagen 17220	36	75	29	-52,00%	24,14%	188	3,17%	408	3,84%	-53,92%
9	Agrale MT12	28	28	24	0,00%	16,67%	185	3,12%	119	1,12%	55,46%
10	Mercedes Benz ATEGO 1725	25	75	20	-66,67%	25,00%	177	2,99%	286	2,69%	-38,11%
11	Scania G340	19	44	26	-56,82%	-26,92%	173	2,92%	101	0,95%	71,29%
12	Mercedes Benz 710	18	37	33	-51,35%	-45,45%	168	2,84%	270	2,54%	-37,78%
13	Mercedes Benz LS 1634	19	106	28	-82,08%	-32,14%	161	2,72%	625	5,89%	-74,24%
14	Mercedes Benz O-500	11	26	20	-57,69%	-45,00%	103	1,74%	180	1,70%	-42,78%
15	Ford CARGO 1517 E	15	18	12	-16,67%	25,00%	92	1,55%	98	0,92%	-6,12%
16	Volkswagen 13180	8	34	16	-76,47%	-50,00%	90	1,52%	249	2,35%	-63,86%
17	Mercedes Benz L1634	8	40	13	-80,00%	-38,46%	90	1,52%	239	2,25%	-62,34%
18	Mercedes Benz OF 1722	4	56	6	-92,86%	-33,33%	90	1,52%	159	1,50%	-43,40%
19	Iveco 490 S	10	55	19	-81,82%	-47,37%	89	1,50%	186	1,75%	-52,15%
20	Scania G380	13	15	18	-13,33%	-27,78%	87	1,47%	48	0,45%	81,25%
21	Otros	331	880	363	-62,39%	-8,82%	2.106	35,56%	4.509	42,47%	-53,29%
Total		935	2.223	977			5.922	1	10.618		

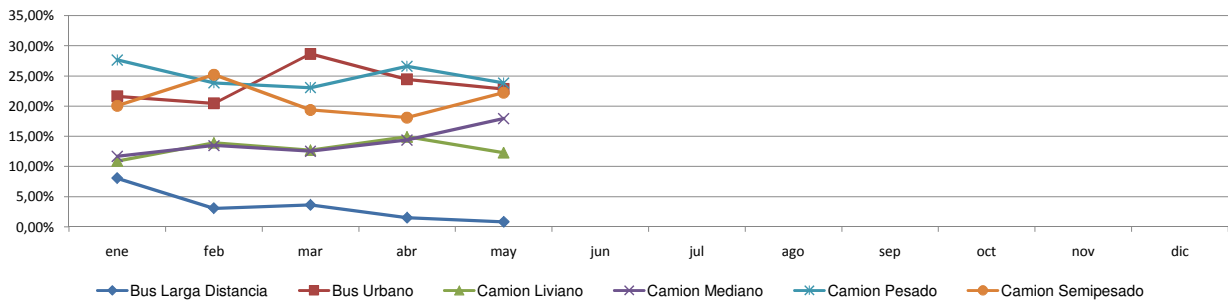


Patentamientos por Ranking de Livianos y Pesados - Mercado Total

Comercial Liviano



Comercial Pesado





Patentamientos por Provincias y Tipos -

Distrito	Automovil+Comercial Liviano							Comercial Pesado+Otros Pesados							Mercado Total					
	may/09 (a)	may/08 (b)	abr/09 (c)	Var a-b	Var a-c	Ac. 09	Ac. 08	Var 09-08	may/09 (a)	may/08 (b)	abr/09 (c)	Var a-b	Var a-c	Ac. 09	Ac. 08	Var 09-08	Ac. 09	Ac. 08	Var 09-08	Part %
CAPITAL FEDERAL	6.933	9.885	6.920	-29,86%	0,19%	38.155	48.304	-21,01%	356	924	348	-61,47%	2,30%	2.123	4.065	-47,77%	40.278	52.369	-23,09%	17,15%
GRAN BUENOS AIRES	6.940	8.795	6.895	-21,09%	0,65%	38.357	43.018	-10,83%	150	324	159	-53,70%	-5,66%	877	1.540	-43,05%	39.235	44.558	-11,95%	16,71%
BUENOS AIRES	5.985	8.438	6.270	-29,07%	-4,55%	35.110	41.809	-16,02%	208	453	181	-54,08%	14,92%	1.157	2.267	-48,96%	36.267	44.076	-17,72%	15,45%
CORDOBA	4.083	5.559	4.165	-26,55%	-1,97%	24.095	29.455	-18,20%	144	314	168	-54,14%	-14,29%	891	1.699	-47,56%	24.986	31.154	-19,80%	10,64%
SANTA FE	3.290	4.803	3.257	-31,50%	1,01%	18.926	25.239	-25,01%	114	327	110	-65,14%	3,64%	801	1.786	-55,15%	19.727	27.025	-27,00%	8,40%
MENDOZA	1.371	1.939	1.396	-29,29%	-1,79%	8.054	9.897	-18,62%	52	136	67	-61,76%	-22,39%	424	755	-43,84%	8.478	10.652	-20,41%	3,61%
CHUBUT	900	1.288	806	-30,12%	11,66%	5.765	6.545	-11,92%	53	144	46	-63,19%	15,22%	255	552	-53,80%	6.020	7.097	-15,18%	2,56%
ENTRE RIOS	832	1.247	871	-33,28%	-4,48%	5.429	6.733	-19,37%	61	97	59	-37,11%	3,39%	343	558	-38,53%	5.772	7.291	-20,83%	2,46%
CHACO	622	925	768	-32,76%	-19,01%	4.820	4.966	-2,94%	55	85	58	-35,29%	-5,17%	281	425	-33,88%	5.101	5.391	-5,38%	2,17%
SALTA	701	1.038	743	-32,47%	-5,65%	4.708	5.601	-15,94%	72	85	76	-15,29%	-5,26%	374	473	-20,93%	5.082	6.074	-16,33%	2,16%
NEUQUEN	746	1.310	717	-43,05%	4,04%	4.668	6.499	-28,17%	42	86	47	-51,16%	-10,64%	257	366	-29,78%	4.925	6.865	-28,26%	2,10%
CORRIENTES	656	846	748	-22,46%	-12,30%	4.410	4.999	-11,78%	50	121	61	-58,68%	-18,03%	392	632	-37,97%	4.802	5.631	-14,72%	2,05%
TUCUMAN	727	1.013	717	-28,23%	1,39%	4.437	5.476	-18,97%	52	105	41	-50,48%	26,83%	281	375	-25,07%	4.718	5.851	-19,36%	2,01%
SANTA CRUZ	640	766	650	-16,45%	-1,54%	4.038	4.226	-4,45%	20	50	25	-60,00%	-20,00%	166	233	-28,76%	4.204	4.459	-5,72%	1,79%
RIO NEGRO	625	817	554	-23,50%	12,82%	3.238	4.037	-19,79%	16	25	11	-36,00%	45,45%	96	136	-29,41%	3.334	4.173	-20,11%	1,42%
MISIONES	356	604	448	-41,06%	-20,54%	2.657	3.539	-24,92%	21	41	25	-48,78%	-16,00%	105	183	-42,62%	2.762	3.722	-25,79%	1,18%
JUJUY	427	504	446	-15,28%	-4,26%	2.521	2.901	-13,10%	49	79	42	-37,97%	16,67%	240	422	-43,13%	2.761	3.323	-16,91%	1,18%
LA PAMPA	431	655	423	-34,20%	1,89%	2.515	3.365	-25,26%	20	27	14	-25,93%	42,86%	90	147	-38,78%	2.605	3.512	-25,83%	1,11%
SAN JUAN	435	509	411	-14,54%	5,84%	2.485	2.725	-8,81%	13	35	18	-62,86%	-27,78%	103	209	-50,72%	2.588	2.934	-11,79%	1,10%
SANTIAGO DEL ESTERO	343	470	352	-27,02%	-2,56%	2.253	2.656	-15,17%	9	34	13	-73,53%	-30,77%	86	151	-43,05%	2.339	2.807	-16,67%	1,00%
FORMOSA	272	326	276	-16,56%	-1,45%	1.905	1.991	-4,32%	6	21	9	-71,43%	-33,33%	76	106	-28,30%	1.981	2.097	-5,53%	0,84%
SAN LUIS	307	374	307	-17,91%	0,00%	1.825	2.002	-8,84%	30	7	10	328,57%	200,00%	72	55	30,91%	1.897	2.057	-7,78%	0,81%
TIERRA DEL FUEGO	321	561	297	-42,78%	8,08%	1.825	2.929	-37,69%	11	42	11	-73,81%	0,00%	66	159	-58,49%	1.891	3.088	-38,76%	0,81%
CATAMARCA	227	322	284	-29,50%	-20,07%	1.654	1.973	-16,17%	5	8	5	-37,50%	0,00%	52	53	-1,89%	1.706	2.026	-15,79%	0,73%
LA RIOJA	187	238	195	-21,43%	-4,10%	1.307	1.251	4,48%	4	7	9	-42,86%	-55,56%	40	40	0,00%	1.347	1.291	4,34%	0,57%



Patentamientos por Provincias y Tipos -

