



Patentamientos por Marcas - Mercado Total

	ago/09(a)	jul/09(b)	ago/08(c)	ago/07(d)	Var a-b	Var a-c	Var a-d	Ac. 09	Ac. 08	Var 09-08
Automovil	33.473	36.567	37.806	40.974	-8,46%	-11,46%	-18,31%	287.182	334.542	-14,16%
Comercial Liviano	7.146	8.272	10.192	9.682	-13,61%	-29,89%	-26,19%	65.849	86.659	-24,01%
Comercial Pesado	1.129	1.173	1.856	2.347	-3,75%	-39,17%	-51,90%	9.414	16.499	-42,94%
Otros Pesados	602	624	1.256	1.282	-3,53%	-52,07%	-53,04%	5.635	10.428	-45,96%
Total	42.350	46.636	51.110	54.285	-9,19%	-17,14%	-21,99%	368.080	448.128	-17,86%
Prom. diario	2.118	2.221	2.434	2.468				2.286	2.716	
Dias habiles	20	21	21	22				161	165	

Patentamientos por origen	
	ago/09 Ac. 09
Importados	24.870 217.340
Nacionales	17.480 150.740



■ Importados ■ Nacionales

Patentamientos Mensuales

	ene	feb	mar	abr	may	jun	jul	ago	sep	oct	nov	dic
2009	73.927	39.075	41.303	40.529	40.148	44.112	46.636	42.350				
2008	85.811	46.476	44.277	56.149	56.809	49.082	58.414	51.110	56.197	51.036	35.528	19.891
Var% 09-08	-13,85%	-15,92%	-6,72%	-27,82%	-29,33%	-10,13%	-20,16%	-17,14%	-100,00%	-100,00%	-100,00%	-100,00%
2007	82.552	38.841	47.379	41.626	47.231	42.139	50.182	54.285	48.857	49.497	40.640	24.528
2006	65.984	32.425	40.400	34.249	38.284	36.566	36.948	39.123	39.641	36.009	33.252	17.725

Patentamientos por Marcas - Totales

Marca	ago/09(a)		ago/08(c)		jul/09(e)		2009		2009		2008		2008		2009-2008
	Part %	Part %	Part %	Part %	Part %	Part %	ene - ago	Part %	ene - ago	Part %	ene - ago	Part %			
Volkswagen	8.518	20,41%	9.835	19,73%	8.475	18,42%	-13,39%	0,51%	68.893	19,01%	79.685	18,21%	-13,54%		
Chevrolet	6.197	14,85%	7.129	14,30%	6.947	15,10%	-13,07%	-10,80%	51.887	14,32%	62.221	14,22%	-16,61%		
Ford	6.013	14,41%	6.114	12,26%	6.205	13,49%	-1,65%	-3,09%	48.407	13,36%	54.435	12,44%	-11,07%		
Renault	5.230	12,53%	4.931	9,89%	6.324	13,74%	6,06%	-17,30%	44.343	12,24%	51.248	11,71%	-13,47%		
Fiat	4.115	9,86%	5.285	10,60%	4.585	9,97%	-22,14%	-10,25%	35.737	9,86%	46.787	10,69%	-23,62%		
Peugeot	3.416	8,19%	4.833	9,69%	3.945	8,57%	-29,32%	-13,41%	33.911	9,36%	44.839	10,24%	-24,37%		
Toyota	2.207	5,29%	2.709	5,43%	2.818	6,12%	-18,53%	-21,68%	21.979	6,07%	22.425	5,12%	-1,99%		
Citroen	1.320	3,16%	1.511	3,03%	1.660	3,61%	-12,64%	-20,48%	14.998	4,14%	16.915	3,86%	-11,33%		
Honda	1.136	2,72%	1.702	3,41%	1.259	2,74%	-33,25%	-9,77%	11.245	3,10%	14.444	3,30%	-22,15%		
Mercedes Benz	885	2,12%	1.266	2,54%	990	2,15%	-30,09%	-10,61%	7.671	2,12%	10.706	2,45%	-28,35%		
Suzuki	673	1,61%	934	1,87%	639	1,39%	-27,94%	5,32%	4.779	1,32%	6.577	1,50%	-27,34%		
Nissan	356	0,85%	627	1,26%	356	0,77%	-43,22%	0,00%	2.885	0,80%	4.805	1,10%	-39,96%		
Hyundai	229	0,55%	533	1,07%	283	0,62%	-57,04%	-19,08%	2.461	0,68%	3.518	0,80%	-30,05%		
Audi	189	0,45%	305	0,61%	219	0,48%	-38,03%	-13,70%	2.084	0,58%	2.524	0,58%	-17,43%		
BMW	202	0,48%	266	0,53%	185	0,40%	-24,06%	9,19%	1.595	0,44%	2.180	0,50%	-26,83%		
Kia	204	0,49%	355	0,71%	176	0,38%	-42,54%	15,91%	1.526	0,42%	2.451	0,56%	-37,74%		
Iveco	186	0,45%	388	0,78%	154	0,33%	-52,06%	20,78%	1.473	0,41%	3.304	0,75%	-55,42%		
Dodge	93	0,22%	120	0,24%	127	0,28%	-22,50%	-26,77%	936	0,26%	771	0,18%	21,40%		
Chery	108	0,26%	65	0,13%	145	0,32%	66,15%	-25,52%	883	0,24%	106	0,02%	733,02%		
Chrysler	65	0,16%	154	0,31%	95	0,21%	-57,79%	-31,58%	732	0,20%	1.055	0,24%	-30,62%		
Jeep	47	0,11%	146	0,29%	74	0,16%	-67,81%	-36,49%	705	0,19%	1.231	0,28%	-42,73%		
Scania	52	0,12%	133	0,27%	49	0,11%	-60,90%	6,12%	699	0,19%	1.188	0,27%	-41,16%		
Mitsubishi	46	0,11%	163	0,33%	53	0,12%	-71,78%	-13,21%	495	0,14%	1.367	0,31%	-63,79%		
Agrale	46	0,11%	72	0,14%	45	0,10%	-36,11%	2,22%	431	0,12%	420	0,10%	2,62%		
Volvo	34	0,08%	90	0,18%	28	0,06%	-62,22%	21,43%	414	0,11%	886	0,20%	-53,27%		
Seat	64	0,15%	51	0,10%	72	0,16%	25,49%	-11,11%	406	0,11%	301	0,07%	34,88%		
Mini	28	0,07%	45	0,09%	43	0,09%	-37,78%	-34,88%	264	0,07%	337	0,08%	-21,66%		
Subaru	33	0,08%	47	0,09%	32	0,07%	-29,79%	3,13%	252	0,07%	389	0,09%	-35,22%		
Puma de Tat	16	0,04%	14	0,03%	8	0,02%	14,29%	100,00%	132	0,04%	215	0,05%	-38,60%		
Land Rover	11	0,03%	18	0,04%	9	0,02%	-38,89%	22,22%	73	0,02%	167	0,04%	-56,29%		
Porsche	9	0,02%	7	0,01%	7	0,02%	28,57%	28,57%	57	0,02%	150	0,03%	-62,00%		
Mack	1	0,00%		0,00%		0,00%	N/D	N/D	9	0,00%		0,00%	N/D		
Alfa Romeo	2	0,00%	2	0,00%	1	0,00%	0,00%	100,00%	6	0,00%	27	0,01%	-77,78%		
Ferrari		0,00%		0,00%	1	0,00%	N/D	-100,00%	4	0,00%	4	0,00%	0,00%		
Jaguar		0,00%	1	0,00%	1	0,00%	-100,00%	-100,00%	4	0,00%	2	0,00%	100,00%		
Lexus		0,00%		0,00%		0,00%	N/D	N/D	1	0,00%		0,00%	N/D		
Hummer		0,00%		0,00%		0,00%	N/D	N/D		0,00%	2	0,00%	-100,00%		
Lamborghini		0,00%		0,00%		0,00%	N/D	N/D		0,00%	1	0,00%	-100,00%		
Total	41.731		49.851		46.010				362.377		437.683				

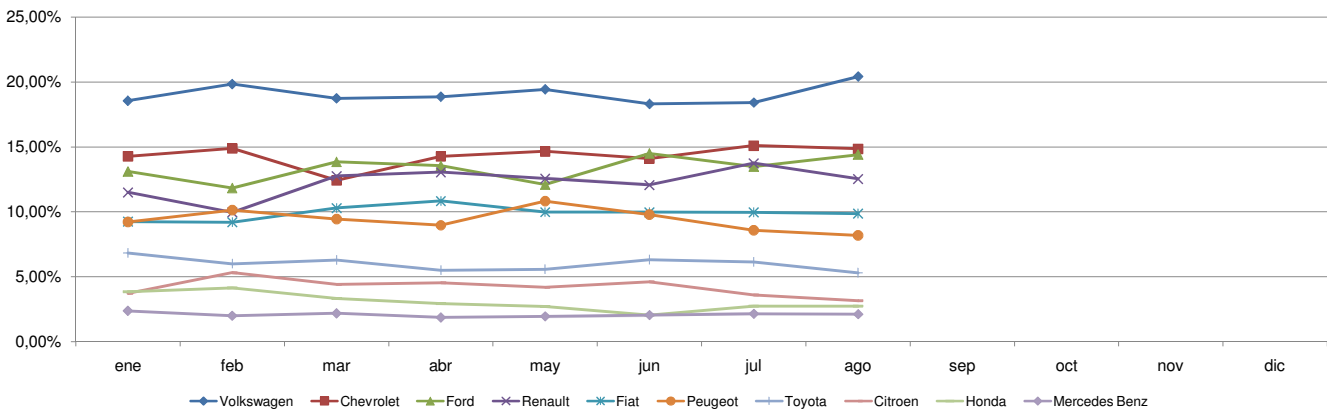


Patentamientos por Marcas - Mercado Total

Patentamientos por Marcas - Autos + Livianos								2009	2009	2008	2008	Var	
Marca	ago/09(a)	Part %	ago/08(c)	Part %	jul/09(e)	Part %	Var a-c	Var a-e	ene - ago	Part %	ene - ago	Part %	2009-2008
Volkswagen	8.404	20,69%	9.610	20,02%	8.391	18,71%	-12,55%	0,15%	68.066	19,28%	77.624	18,43%	-12,31%
Chevrolet	6.197	15,26%	7.129	14,85%	6.947	15,49%	-13,07%	-10,80%	51.887	14,70%	62.221	14,77%	-16,61%
Ford	5.790	14,25%	5.832	12,15%	5.977	13,33%	-0,72%	-3,13%	46.721	13,23%	51.197	12,16%	-8,74%
Renault	5.197	12,79%	4.868	10,14%	6.281	14,01%	6,76%	-17,26%	44.151	12,51%	50.783	12,06%	-13,06%
Fiat	4.115	10,13%	5.285	11,01%	4.585	10,23%	-22,14%	-10,25%	35.737	10,12%	46.787	11,11%	-23,62%
Peugeot	3.416	8,41%	4.833	10,07%	3.945	8,80%	-29,32%	-13,41%	33.911	9,61%	44.839	10,65%	-24,37%
Toyota	2.207	5,43%	2.709	5,64%	2.818	6,28%	-18,53%	-21,68%	21.979	6,23%	22.425	5,32%	-1,99%
Citroen	1.320	3,25%	1.511	3,15%	1.660	3,70%	-12,64%	-20,48%	14.998	4,25%	16.915	4,02%	-11,33%
Honda	1.136	2,80%	1.702	3,55%	1.259	2,81%	-33,25%	-9,77%	11.245	3,19%	14.444	3,43%	-22,15%
Suzuki	673	1,66%	934	1,95%	639	1,43%	-27,94%	5,32%	4.779	1,35%	6.577	1,56%	-27,34%
Mercedes Benz	412	1,01%	550	1,15%	387	0,86%	-25,09%	6,46%	3.589	1,02%	4.784	1,14%	-24,98%
Nissan	356	0,88%	627	1,31%	356	0,79%	-43,22%	0,00%	2.885	0,82%	4.805	1,14%	-39,96%
Hyundai	213	0,52%	501	1,04%	269	0,60%	-57,49%	-20,82%	2.347	0,66%	3.385	0,80%	-30,66%
Audi	189	0,47%	305	0,64%	219	0,49%	-38,03%	-13,70%	2.084	0,59%	2.524	0,60%	-17,43%
BMW	202	0,50%	266	0,55%	185	0,41%	-24,06%	9,19%	1.595	0,45%	2.180	0,52%	-26,83%
Kia	204	0,50%	355	0,74%	176	0,39%	-42,54%	15,91%	1.526	0,43%	2.451	0,58%	-37,74%
Dodge	93	0,23%	120	0,25%	127	0,28%	-67,81%	-26,77%	936	0,27%	771	0,18%	21,40%
Chery	108	0,27%	65	0,14%	145	0,32%	66,15%	-25,52%	883	0,25%	106	0,03%	733,02%
Chrysler	65	0,16%	154	0,32%	95	0,21%	-57,79%	-31,58%	732	0,21%	1.055	0,25%	-30,62%
Jeep	47	0,12%	146	0,30%	74	0,17%	-67,81%	-36,49%	705	0,20%	1.231	0,29%	-42,73%
Iveco	65	0,16%	125	0,26%	73	0,16%	-48,00%	-10,96%	544	0,15%	1.005	0,24%	-45,87%
Mitsubishi	46	0,11%	163	0,34%	53	0,12%	-71,78%	-13,21%	495	0,14%	1.367	0,32%	-63,79%
Seat	64	0,16%	51	0,11%	72	0,16%	25,49%	-11,11%	406	0,12%	301	0,07%	34,88%
Mini	28	0,07%	45	0,09%	43	0,10%	-37,78%	-34,88%	264	0,07%	337	0,08%	-21,66%
Subaru	33	0,08%	47	0,10%	32	0,07%	-29,79%	3,13%	252	0,07%	389	0,09%	-35,22%
Volvo	16	0,04%	37	0,08%	11	0,02%	-56,76%	45,45%	162	0,05%	345	0,08%	-53,04%
Land Rover	11	0,03%	18	0,04%	9	0,02%	-38,89%	22,22%	73	0,02%	167	0,04%	-56,29%
Porsche	9	0,02%	7	0,01%	7	0,02%	28,57%	28,57%	57	0,02%	150	0,04%	-62,00%
Alfa Romeo	2	0,00%	2	0,00%	1	0,00%	0,00%	100,00%	6	0,00%	27	0,01%	-77,78%
Ferrari		0,00%		0,00%	1	0,00%	N/D	-100,00%	4	0,00%	4	0,00%	0,00%
Jaguar		0,00%	1	0,00%	1	0,00%	-100,00%	-100,00%	4	0,00%	2	0,00%	100,00%
Agrale		0,00%		0,00%		0,00%	N/D	N/D	1	0,00%		0,00%	N/D
Lexus		0,00%		0,00%		0,00%	N/D	N/D	1	0,00%		0,00%	N/D
Hummer		0,00%		0,00%		0,00%	N/D	N/D		0,00%	2	0,00%	-100,00%
Lamborghini		0,00%		0,00%		0,00%	N/D	N/D		0,00%	1	0,00%	-100,00%
Total	40.618		47.998		44.838				353.025		421.201		

Patentamientos por Marcas - Camiones + Buses								2009	2009	2008	2008	Var	
Marca	ago/09(a)	Part %	ago/08(c)	Part %	jul/09(e)	Part %	Var a-c	Var a-e	ene - ago	Part %	ene - ago	Part %	2009-2008
Mercedes Benz	473	42,50%	716	38,64%	603	51,45%	-33,94%	-21,56%	4.082	43,65%	5.922	35,93%	-31,07%
Ford	223	20,04%	282	15,22%	228	19,45%	-20,92%	-2,19%	1.686	18,03%	3.238	19,65%	-47,93%
Iveco	121	10,87%	263	14,19%	81	6,91%	-53,99%	49,38%	929	9,93%	2.299	13,95%	-59,59%
Volkswagen	114	10,24%	225	12,14%	84	7,17%	-49,33%	35,71%	827	8,84%	2.061	12,50%	-59,87%
Scania	52	4,67%	133	7,18%	49	4,18%	-60,90%	6,12%	699	7,47%	1.188	7,21%	-41,16%
Agrale	46	4,13%	72	3,89%	45	3,84%	-36,11%	2,22%	430	4,60%	420	2,55%	2,38%
Volvo	18	1,62%	53	2,86%	17	1,45%	-66,04%	5,88%	252	2,69%	541	3,28%	-53,42%
Renault	33	2,96%	63	3,40%	43	3,67%	-47,62%	-23,26%	192	2,05%	465	2,82%	-58,71%
Puma de Tat	16	1,44%	14	0,76%	8	0,68%	14,29%	100,00%	132	1,41%	215	1,30%	-38,60%
Hyundai	16	1,44%	32	1,73%	14	1,19%	-50,00%	14,29%	114	1,22%	133	0,81%	-14,29%
Mack	1	0,09%		0,00%		0,00%	N/D	N/D	9	0,10%		0,00%	N/D
Total	1.113		1.853		1.172				9.352		16.482		

Participacion por Marcas - Evolucion Mensual

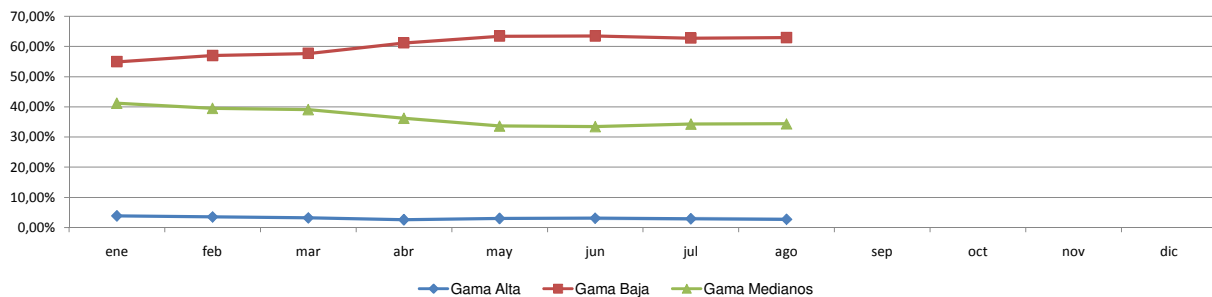




Patentamientos por Ranking de Automoviles - Mercado Total

Rank.	Modelo	Ranking Por Modelos - Automoviles									
		ago/09 (a)	ago/08 (b)	jul/09 (c)	Var a-b	Var a-c	Ac. 09	Part %	Ac. 08	Part %	Var 09-08
1	Chevrolet CORSA	2.552	2.726	2.917	-6,38%	-12,51%	20.378	7,10%	25.198	7,53%	-19,13%
2	Peugeot 207 COMPACT	2.094		2.132	N/D	-1,78%	17.541	6,11%		0,00%	N/D
3	Volkswagen GOL TREND	1.671	1	1.943	167000,00%	-14,00%	15.505	5,40%	1	0,00%	1550400,00%
4	Ford ECOSPORT	1.503	1.462	1.658	2,80%	-9,35%	12.817	4,46%	12.820	3,83%	-0,02%
5	Volkswagen GOL	1.789	3.964	1.601	-54,87%	11,74%	12.306	4,29%	30.945	9,25%	-60,23%
6	Volkswagen SURAN	1.264	1.269	1.242	-0,39%	1,77%	10.804	3,76%	11.618	3,47%	-7,01%
7	Renault CLIO	1.113	1.299	1.479	-14,32%	-24,75%	10.715	3,73%	12.179	3,64%	-12,02%
8	Ford FIESTA	870	1.226	1.044	-29,04%	-16,67%	8.288	2,89%	10.001	2,99%	-17,13%
9	Ford KA	1.035	906	1.162	14,24%	-10,93%	7.881	2,74%	6.774	2,02%	16,34%
10	Fiat SIENA	905	1.310	951	-30,92%	-4,84%	7.848	2,73%	9.988	2,99%	-21,43%
11	Volkswagen BORA	967	1.307	777	-26,01%	24,45%	7.485	2,61%	8.915	2,66%	-16,04%
12	Fiat PALIO	716	1.082	879	-33,83%	-18,54%	6.745	2,35%	8.836	2,64%	-23,66%
13	Renault SANDERO	1.082	279	1.181	287,81%	-8,38%	6.689	2,33%	3.327	0,99%	101,05%
14	Peugeot 307	560	1.116	701	-49,82%	-20,11%	6.351	2,21%	12.530	3,75%	-49,31%
15	Citroen C4	608	552	693	10,14%	-12,27%	6.331	2,20%	6.759	2,02%	-6,33%
16	Volkswagen VOYAGE	906		939	N/D	-3,51%	6.209	2,16%		0,00%	N/D
17	Honda FIT	674	651	672	3,53%	0,30%	6.158	2,14%	6.088	1,82%	1,15%
18	Fiat UNO	592	971	781	-39,03%	-24,20%	5.938	2,07%	8.784	2,63%	-32,40%
19	Toyota COROLLA	516	734	648	-29,70%	-20,37%	5.550	1,93%	5.368	1,60%	3,39%
20	Chevrolet ASTRA	478	1.170	417	-59,15%	14,63%	5.260	1,83%	8.389	2,51%	-37,30%
21	Volkswagen FOX/CROSSFOX	646	1.084	716	-40,41%	-9,78%	5.204	1,81%	9.931	2,97%	-47,60%
22	Ford FOCUS	787	796	725	-1,13%	8,55%	4.941	1,72%	7.297	2,18%	-32,29%
23	Chevrolet CORSA II	586	856	587	-31,54%	-0,17%	4.540	1,58%	6.528	1,95%	-30,45%
24	Chevrolet MERIVA	467	513	601	-8,97%	-22,30%	4.405	1,53%	5.774	1,73%	-23,71%
25	Ford FOCUS II	524	23	571	2178,26%	-8,23%	4.098	1,43%	25	0,01%	16292,00%
26	Chevrolet AVEO	742		561	N/D	32,26%	3.849	1,34%		0,00%	N/D
27	Renault KANGOO	527	635	469	-17,01%	12,37%	3.782	1,32%	5.915	1,77%	-36,06%
28	Renault MEGANE II	353	346	656	2,02%	-46,19%	3.757	1,31%	3.858	1,15%	-2,62%
29	Fiat PALIO WEEKEND	476	135	405	252,59%	17,53%	3.732	1,30%	2.722	0,81%	37,11%
30	Renault SYMBOL	529		538	N/D	-1,67%	3.571	1,24%		0,00%	N/D
31	Volkswagen VENTO	422	506	367	-16,60%	14,99%	3.258	1,13%	4.112	1,23%	-20,77%
32	Fiat PUNTO	411	572	378	-28,15%	8,73%	3.230	1,12%	5.926	1,77%	-45,49%
33	Citroen C3	256	184	409	39,13%	-37,41%	3.150	1,10%	3.587	1,07%	-12,18%
34	Chevrolet CORSA SW	441	455	465	-3,08%	-5,16%	3.126	1,09%	3.793	1,13%	-17,59%
35	Renault LOGAN	426	255	550	67,06%	-22,55%	3.125	1,09%	3.729	1,11%	-16,20%
36	Peugeot 206	178	2.674	316	-93,34%	-43,67%	2.922	1,02%	23.281	6,96%	-87,45%
37	Suzuki FUN	531	782	435	-32,10%	22,07%	2.836	0,99%	5.012	1,50%	-43,42%
38	Renault MEGANE	45	845	53	-94,67%	-15,09%	2.795	0,97%	8.490	2,54%	-67,08%
39	Honda CIVIC	191	449	257	-57,46%	-25,68%	2.306	0,80%	4.330	1,29%	-46,74%
40	Chevrolet SPARK	82		106	N/D	-22,64%	2.286	0,80%		0,00%	N/D
41	Nissan TIIDA	308	329	269	-6,38%	14,50%	2.130	0,74%	2.184	0,65%	-2,47%
42	Chevrolet VECTRA	249	249	303	0,00%	-17,82%	1.890	0,66%	2.620	0,78%	-27,86%
43	Volkswagen GOL COUNTRY	190	394	175	-51,78%	8,57%	1.728	0,60%	2.857	0,85%	-39,52%
44	Citroen PICASSO	88	176	117	-50,00%	-24,79%	1.561	0,54%	1.865	0,56%	-16,30%
45	Fiat IDEA	139	297	202	-53,20%	-31,19%	1.557	0,54%	3.387	1,01%	-54,03%
46	Citroen BERLINGO	114	197	185	-42,13%	-38,38%	1.239	0,43%	2.040	0,61%	-39,26%
47	Renault SCENIC	74	161	91	-54,04%	-18,68%	1.161	0,40%	1.838	0,55%	-36,83%
48	Peugeot PARTNER	18	222	75	-91,89%	-76,00%	1.008	0,35%	2.146	0,64%	-53,03%
49	Fiat LINEA	209		272	N/D	-23,16%	975	0,34%		0,00%	N/D
50	Chevrolet ZAFIRA	86	157	142	-45,22%	-39,44%	944	0,33%	1.523	0,46%	-38,02%
51	Otros	1.482	2.489	1.753	-40,46%	-15,46%	15.273	5,32%	21.252	6,35%	-28,13%
Total		33.472	37.806	36.566			287.178	1	334.542		

Autos - Participacion por Segmento





Patentamientos por Ranking de Livianos y Pesados - Mercado Total

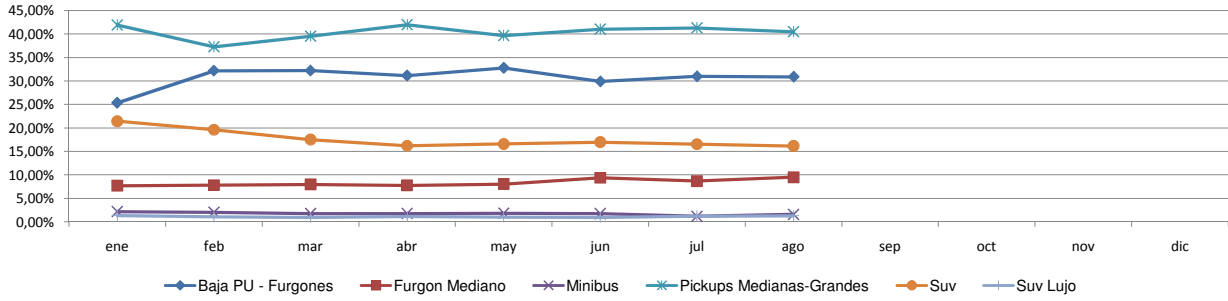
Rank.	Comercial Liviano										
	Modelo	ago/09 (a)	ago/08 (b)	jul/09 (c)	Var a-b	Var a-c	Ac. 09	Part %	Ac. 08	Part %	Var 09-08
1	Toyota HILUX	1.475	1.623	1.893	-9,12%	-22,08%	13.701	20,81%	13.585	15,68%	0,85%
2	Ford RANGER	873	1.153	637	-24,28%	37,05%	6.688	10,16%	11.428	13,19%	-41,48%
3	Renault KANGOO FURGON	715	831	904	-13,96%	-20,91%	6.006	9,12%	8.579	9,90%	-29,99%
4	Chevrolet S-10	336	808	678	-58,42%	-50,44%	4.233	6,43%	6.770	7,81%	-37,47%
5	Peugeot PARTNER FURGON	353	632	433	-44,15%	-18,48%	3.762	5,71%	5.027	5,80%	-25,16%
6	Fiat FIORINO	415	599	435	-30,72%	-4,60%	3.553	5,40%	4.557	5,26%	-22,03%
7	Volkswagen SAVEIRO	269	408	316	-34,07%	-14,87%	2.410	3,66%	2.707	3,12%	-10,97%
8	Honda CRV	217	543	262	-60,04%	-17,18%	2.245	3,41%	3.385	3,91%	-33,68%
9	Citroen BERLINGO FURGON	175	327	185	-46,48%	-5,41%	2.216	3,37%	2.335	2,69%	-5,10%
10	Mercedes Benz SPRINTER	245	307	200	-20,20%	22,50%	1.907	2,90%	2.738	3,16%	-30,35%
11	Renault MASTER	235	176	253	33,52%	-7,11%	1.817	2,76%	2.119	2,45%	-14,25%
12	Toyota HILUX SW4	144	170	163	-15,29%	-11,66%	1.486	2,26%	1.811	2,09%	-17,95%
13	Ford F 100	135	144	117	-6,25%	15,38%	1.193	1,81%	1.748	2,02%	-31,75%
14	Suzuki GRAND VITARA	75	63	120	19,05%	-37,50%	1.102	1,67%	783	0,90%	40,74%
15	Chery TIGGO	108	65	145	66,15%	-25,52%	883	1,34%	106	0,12%	733,02%
16	Toyota RAV 4	43	59	43	-27,12%	0,00%	839	1,27%	470	0,54%	78,51%
17	Fiat STRADA	111	52	129	113,46%	-13,95%	809	1,23%	705	0,81%	14,75%
18	Hyundai TUCSON	76	157	83	-51,59%	-8,43%	680	1,03%	1.192	1,38%	-42,95%
19	Chevrolet CAPTIVA	89	146	85	-39,04%	4,71%	618	0,94%	1.046	1,21%	-40,92%
20	Kia K2700	70	132	67	-46,97%	4,48%	586	0,89%	579	0,67%	1,21%
21	Otros	987	1.797	1.124	-45,08%	-12,19%	9.113	13,84%	14.989	17,30%	-39,20%
Total		7.146	10.192	8.272			65.847	1	86.659		

Rank.	Comercial Pesado										
	Modelo	ago/09 (a)	ago/08 (b)	jul/09 (c)	Var a-b	Var a-c	Ac. 09	Part %	Ac. 08	Part %	Var 09-08
1	Mercedes Benz BMO 384	40	14	98	185,71%	-59,18%	597	6,38%	16	0,10%	3631,25%
2	Mercedes Benz L-1624	55	92	95	-40,22%	-42,11%	590	6,31%	652	3,96%	-9,51%
3	Ford CARGO 1722 E	72	98	81	-26,53%	-11,11%	547	5,85%	1.192	7,23%	-54,11%
4	Mercedes Benz 1315	83	61	62	36,07%	33,87%	463	4,95%	526	3,19%	-11,98%
5	Iveco 170 E	61	111	40	-45,05%	52,50%	455	4,87%	896	5,44%	-49,22%
6	Ford F-4000	46	72	72	-36,11%	-36,11%	430	4,60%	720	4,37%	-40,28%
7	Mercedes Benz OF 1418	16	133	45	-87,97%	-64,44%	333	3,56%	863	5,24%	-61,41%
8	Mercedes Benz ATEGO 1725	55	63	44	-12,70%	25,00%	303	3,24%	501	3,04%	-39,52%
9	Volkswagen 17220	29	100	31	-71,00%	-6,45%	270	2,89%	674	4,09%	-59,94%
10	Mercedes Benz LS 1634	25	53	28	-52,83%	-10,71%	257	2,75%	835	5,07%	-69,22%
11	Mercedes Benz 710	30	73	25	-58,90%	20,00%	243	2,60%	434	2,63%	-44,01%
12	Agrale MT12	20	27	17	-25,93%	17,65%	235	2,51%	189	1,15%	24,34%
13	Scania G340	21	45	21	-53,33%	0,00%	234	2,50%	243	1,47%	-3,70%
14	Mercedes Benz OF 1722	22	23	81	-4,35%	-72,84%	230	2,46%	256	1,55%	-10,16%
15	Mercedes Benz L-1318	33	19	35	73,68%	-5,71%	169	1,81%	176	1,07%	-3,98%
16	Ford CARGO 1832 E	28	36	15	-22,22%	86,67%	157	1,68%	488	2,96%	-67,83%
17	Mercedes Benz O-500	15	19	14	-21,05%	7,14%	153	1,64%	258	1,57%	-40,70%
18	Ford CARGO 1517 E	21	13	14	61,54%	50,00%	153	1,64%	158	0,96%	-3,16%
19	Mercedes Benz L1634	16	34	9	-52,94%	77,78%	137	1,46%	346	2,10%	-60,40%
20	Volkswagen 13180	25	8	13	212,50%	92,31%	137	1,46%	300	1,82%	-54,33%
21	Otros	400	759	332	-47,30%	20,48%	3.259	34,85%	6.759	41,01%	-51,78%
Total		1.113	1.853	1.172			9.352	1	16.482		

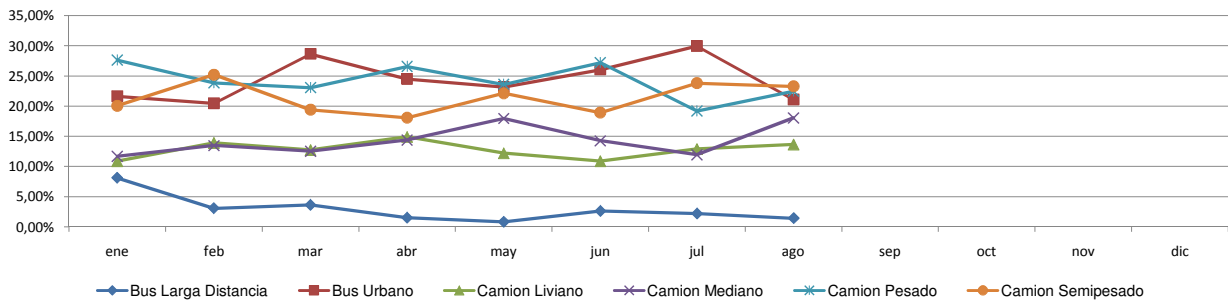


Patentamientos por Ranking de Livianos y Pesados - Mercado Total

Comercial Liviano



Comercial Pesado





Patentamientos por Provincias y Tipos -

