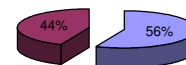




Patentamientos por Marcas - Mercado Total

	ago/07(a)	jul/07(b)	ago/06(c)	ago/05(d)	Var a-b	Var a-c	Var a-d	Ac. 07	Ac. 06	Var 07-06
Automovil	40.993	37.727	29.337	23.142	8,66%	39,73%	77,14%	305.499	242.560	25,95%
Comercial Liviano	9.664	9.038	7.087	6.654	6,93%	36,36%	45,24%	73.258	60.351	21,39%
Comercial Pesado	2.351	2.209	1.745	1.337	6,43%	34,73%	75,84%	16.148	13.853	16,57%
Otros Pesados	1.283	1.231	910	811	4,22%	40,99%	58,20%	8.883	6.975	27,35%
Total	54.291	50.205	39.079	31.944	8,14%	38,93%	69,96%	403.788	323.739	24,73%
Prom. diario	2.468	2.391	1.776	1.452				2.418	1.916	
Dias habiles	22	21	22	22				167	169	

Patentamientos por origen		
	Ago-07	Ac. 07
Importados	32.478	228.090
Nacionales	21.813	176.299



Importados Nacionales

Patentamientos Mensuales

	ene	feb	mar	abr	may	jun	jul	ago	sep	oct	nov	dic
2007	82.596	38.861	47.400	41.645	47.245	42.147	50.205	54.291				
2006	66.097	32.505	40.533	34.358	38.391	36.669	37.069	39.217	39.717	36.097	33.340	17.799
Var% 07-06	24,96%	19,55%	16,94%	21,21%	23,06%	14,94%	35,44%	38,44%	-100,00%	-100,00%	-100,00%	-100,00%
2005	52.628	26.496	30.765	33.142	33.594	32.741	34.333	32.023	36.245	30.713	29.522	16.092
2004												

Patentamientos por Marcas - Totales

Marca	2007		2006		2007		2006		ene - ago	Part %	ene - ago	Part %	Var 2007-2006
	ago/07(a)	Part %	ago/06(c)	Part %	jul/07(e)	Part %	Var a-c	Var a-e					
Volkswagen	10.605	20,03%	8.262	21,69%	9.191	18,80%	28,36%	15,38%	76.810	19,46%	63.368	20,07%	21,21%
Chevrolet	8.292	15,66%	5.350	14,05%	7.765	15,89%	54,99%	6,79%	59.000	14,95%	45.399	14,38%	29,96%
Ford	6.843	12,92%	5.439	14,28%	6.706	13,72%	25,81%	2,04%	52.482	13,30%	46.389	14,69%	13,13%
Renault	5.940	11,22%	4.274	11,22%	6.248	12,78%	38,98%	-4,93%	49.288	12,49%	35.458	11,23%	39,00%
Peugeot	4.896	9,25%	3.546	9,31%	4.820	9,86%	38,07%	1,58%	41.778	10,59%	32.822	10,40%	27,29%
Fiat	5.532	10,45%	3.734	9,80%	4.546	9,30%	48,15%	21,69%	39.777	10,08%	30.890	9,78%	28,77%
Toyota	2.514	4,75%	2.176	5,71%	2.308	4,72%	15,53%	8,93%	20.135	5,10%	15.741	4,99%	27,91%
Citroen	2.499	4,72%	1.211	3,18%	1.815	3,71%	106,36%	37,69%	14.909	3,78%	10.707	3,39%	39,25%
Mercedes Benz	1.235	2,33%	940	2,47%	1.176	2,41%	31,38%	5,02%	9.467	2,40%	7.850	2,49%	20,60%
Honda	1.092	2,06%	532	1,40%	1.036	2,12%	105,26%	5,41%	7.215	1,83%	5.849	1,85%	23,35%
Suzuki	1.117	2,11%	955	2,51%	1.092	2,23%	16,96%	2,29%	6.960	1,76%	7.547	2,39%	-7,78%
Iveco	357	0,67%	283	0,74%	308	0,63%	26,15%	15,91%	2.513	0,64%	2.163	0,69%	16,18%
Nissan	348	0,66%	253	0,66%	323	0,66%	37,55%	7,74%	2.320	0,59%	2.264	0,72%	2,47%
Audi	267	0,50%	191	0,50%	228	0,47%	39,79%	17,11%	2.034	0,52%	1.608	0,51%	26,49%
BMW	166	0,31%	129	0,34%	149	0,30%	28,68%	11,41%	1.704	0,43%	1.349	0,43%	26,32%
Hyundai	212	0,40%	91	0,24%	223	0,46%	132,97%	-4,93%	1.324	0,34%	578	0,18%	129,07%
Kia	203	0,38%	100	0,26%	134	0,27%	103,00%	51,49%	1.282	0,32%	817	0,26%	56,92%
Scania	161	0,30%	181	0,48%	161	0,33%	-11,05%	0,00%	1.098	0,28%	1.384	0,44%	-20,66%
Mitsubishi	108	0,20%	72	0,19%	112	0,23%	50,00%	-3,57%	856	0,22%	680	0,22%	25,88%
Jeep	111	0,21%	71	0,19%	133	0,27%	56,34%	-16,54%	828	0,21%	523	0,17%	58,32%
Chrysler	84	0,16%	74	0,19%	92	0,19%	13,51%	-8,70%	708	0,18%	528	0,17%	34,09%
Volvo	111	0,21%	28	0,07%	84	0,17%	296,43%	32,14%	522	0,13%	310	0,10%	68,39%
Agrale	57	0,11%	39	0,10%	36	0,07%	46,15%	58,33%	316	0,08%	211	0,07%	49,76%
Dodge	46	0,09%	50	0,13%	41	0,08%	-8,00%	12,20%	309	0,08%	283	0,09%	9,19%
Subaru	42	0,08%	24	0,06%	45	0,09%	75,00%	-6,67%	290	0,07%	165	0,05%	75,76%
Mini	37	0,07%	26	0,07%	35	0,07%	42,31%	5,71%	275	0,07%	223	0,07%	23,32%
Land Rover	33	0,06%	26	0,07%	30	0,06%	26,92%	10,00%	153	0,04%	194	0,06%	-21,13%
Puma de Tat	20	0,04%	1	0,00%	31	0,06%	1900,00%	-35,48%	128	0,03%	28	0,01%	357,14%
Porsche	6	0,01%	6	0,02%	1	0,00%	0,00%	500,00%	78	0,02%	87	0,03%	-10,34%
Alfa Romeo	5	0,01%	1	0,00%	11	0,02%	400,00%	-54,55%	51	0,01%	36	0,01%	41,67%
Seat	12	0,02%	3	0,01%	1	0,00%	300,00%	1100,00%	14	0,00%	11	0,00%	27,27%
Jaguar		0,00%	1	0,00%		0,00%	-100,00%	N/D	11	0,00%	9	0,00%	22,22%
Isuzu		0,00%	13	0,03%		0,00%	-100,00%	N/D	9	0,00%	252	0,08%	-96,43%
Hummer	1	0,00%	1	0,00%	1	0,00%	0,00%	0,00%	7	0,00%	10	0,00%	-30,00%
Ferrari		0,00%		0,00%		0,00%	N/D	N/D	4	0,00%		0,00%	N/D
Maserati		0,00%		0,00%		0,00%	N/D	N/D	3	0,00%		0,00%	N/D
Lexus	1	0,00%		0,00%		0,00%	N/D	N/D	1	0,00%	2	0,00%	-50,00%
Total	52.953		38.083		48.882				394.659		315.735		

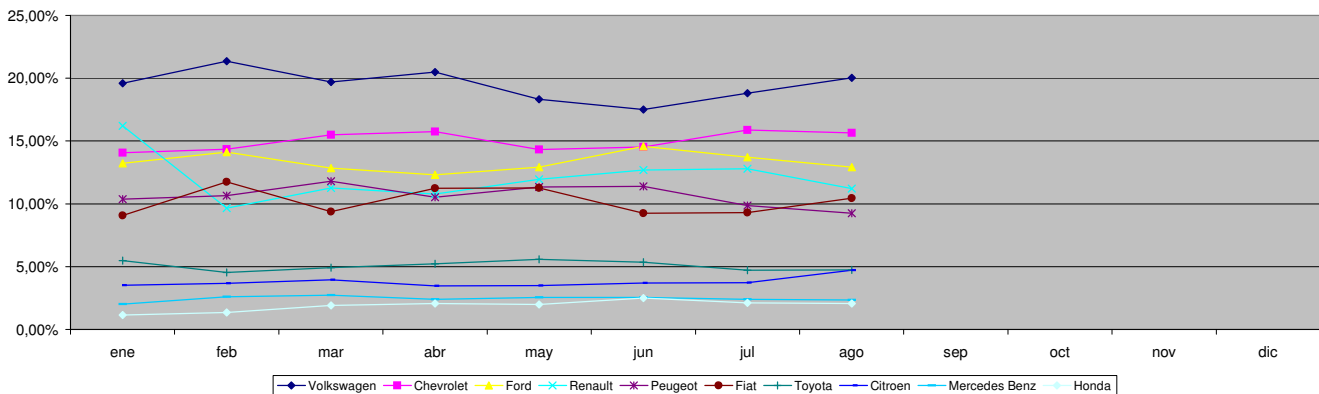


Patentamientos por Marcas - Mercado Total

Patentamientos por Marcas - Autos + Livianos								2007	2007	2006	2006	Var	
Marca	ago/07(a)	Part %	ago/06(c)	Part %	jul/07(e)	Part %	Var a-c	Var a-e	ene - ago	Part %	ene - ago	Part %	2007-2006
Volkswagen	10.133	20,01%	7.999	21,99%	8.845	18,91%	26,68%	14,56%	74.401	19,65%	61.531	20,34%	20,92%
Chevrolet	8.292	16,37%	5.350	14,71%	7.765	16,60%	54,99%	6,79%	59.000	15,58%	45.399	15,01%	29,96%
Ford	6.355	12,55%	5.039	13,85%	6.276	13,42%	26,12%	1,26%	49.019	12,94%	43.379	14,34%	13,00%
Renault	5.860	11,57%	4.230	11,63%	6.186	13,23%	38,53%	-5,27%	48.486	12,80%	35.087	11,60%	38,19%
Peugeot	4.896	9,67%	3.546	9,75%	4.820	10,31%	38,07%	1,58%	41.776	11,03%	32.822	10,85%	27,28%
Fiat	5.532	10,92%	3.734	10,26%	4.546	9,72%	48,15%	21,69%	39.768	10,50%	30.890	10,21%	28,74%
Toyota	2.514	4,96%	2.176	5,98%	2.308	4,94%	15,53%	8,93%	20.135	5,32%	15.741	5,20%	27,91%
Citroen	2.499	4,93%	1.211	3,33%	1.815	3,88%	106,36%	37,69%	14.909	3,94%	10.707	3,54%	39,25%
Honda	1.092	2,16%	532	1,46%	1.036	2,22%	105,26%	5,41%	7.215	1,91%	5.849	1,93%	23,35%
Suzuki	1.117	2,21%	955	2,63%	1.092	2,34%	16,96%	2,29%	6.960	1,84%	7.547	2,49%	-7,78%
Mercedes Benz	460	0,91%	319	0,88%	370	0,79%	44,20%	24,32%	3.509	0,93%	2.821	0,93%	24,39%
Nissan	348	0,69%	253	0,70%	323	0,69%	37,55%	7,74%	2.320	0,61%	2.264	0,75%	2,47%
Audi	267	0,53%	191	0,53%	228	0,49%	39,79%	17,11%	2.034	0,54%	1.608	0,53%	26,49%
BMW	166	0,33%	129	0,35%	149	0,32%	28,68%	11,41%	1.704	0,45%	1.349	0,45%	26,32%
Hyundai	210	0,41%	87	0,24%	221	0,47%	141,38%	-4,98%	1.289	0,34%	555	0,18%	132,25%
Kia	203	0,40%	100	0,27%	134	0,29%	103,00%	51,49%	1.282	0,34%	817	0,27%	56,92%
Iveco	155	0,31%	154	0,42%	101	0,22%	0,65%	53,47%	1.027	0,27%	1.062	0,35%	-3,30%
Mitsubishi	108	0,21%	72	0,20%	112	0,24%	50,00%	-3,57%	856	0,23%	680	0,22%	25,88%
Jeep	111	0,22%	71	0,20%	133	0,28%	56,34%	-16,54%	828	0,22%	523	0,17%	58,32%
Chrysler	84	0,17%	74	0,20%	92	0,20%	13,51%	-8,70%	708	0,19%	528	0,17%	34,09%
Dodge	46	0,09%	50	0,14%	41	0,09%	-8,00%	12,20%	309	0,08%	283	0,09%	9,19%
Subaru	42	0,08%	24	0,07%	45	0,10%	75,00%	-6,67%	290	0,08%	165	0,05%	75,76%
Volvo	63	0,12%	11	0,03%	47	0,10%	472,73%	34,04%	288	0,08%	123	0,04%	134,15%
Mini	37	0,07%	26	0,07%	35	0,07%	42,31%	5,71%	275	0,07%	223	0,07%	23,32%
Land Rover	31	0,06%	20	0,05%	30	0,06%	55,00%	3,33%	138	0,04%	167	0,06%	-17,37%
Porsche	6	0,01%	6	0,02%	1	0,00%	0,00%	500,00%	78	0,02%	87	0,03%	-10,34%
Alfa Romeo	5	0,01%	1	0,00%	11	0,02%	400,00%	-54,55%	51	0,01%	36	0,01%	41,67%
Seat	12	0,02%	3	0,01%	1	0,00%	300,00%	1100,00%	14	0,00%	11	0,00%	27,27%
Jaguar		0,00%	1	0,00%		0,00%	-100,00%	N/D	11	0,00%	9	0,00%	22,22%
Isuzu		0,00%	13	0,04%		0,00%	-100,00%	N/D	9	0,00%	252	0,08%	-96,43%
Hummer	1	0,00%	1	0,00%	1	0,00%	0,00%	0,00%	7	0,00%	10	0,00%	-30,00%
Ferrari		0,00%		0,00%		0,00%	N/D	N/D	4	0,00%		0,00%	N/D
Maserati		0,00%		0,00%		0,00%	N/D	N/D	3	0,00%		0,00%	N/D
Agrale		0,00%		0,00%		0,00%	N/D	N/D	1	0,00%	3	0,00%	-66,67%
Lexus	1	0,00%		0,00%		0,00%	N/D	N/D	1	0,00%	2	0,00%	-50,00%
Total	50.646		36.378		46.764				378.705		302.530		

Patentamientos por Marcas - Camiones + Buses								2007	2007	2006	2006	Var	
Marca	ago/07(a)	Part %	ago/06(c)	Part %	jul/07(e)	Part %	Var a-c	Var a-e	ene - ago	Part %	ene - ago	Part %	2007-2006
Mercedes Benz	775	33,59%	621	36,42%	806	38,05%	24,80%	-3,85%	5.958	37,34%	5.029	38,08%	18,47%
Ford	488	21,15%	400	23,46%	430	20,30%	22,00%	13,49%	3.463	21,71%	3.010	22,79%	15,05%
Volkswagen	472	20,46%	263	15,43%	346	16,34%	79,47%	36,42%	2.409	15,10%	1.837	13,91%	31,14%
Iveco	202	8,76%	129	7,57%	207	9,77%	56,59%	-2,42%	1.486	9,31%	1.101	8,34%	34,97%
Scania	161	6,98%	181	10,62%	161	7,60%	-11,05%	0,00%	1.098	6,88%	1.384	10,48%	-20,66%
Renault	80	3,47%	44	2,58%	62	2,93%	81,82%	29,03%	802	5,03%	371	2,81%	116,17%
Agrale	57	2,47%	39	2,29%	36	1,70%	46,15%	58,33%	315	1,97%	208	1,58%	51,44%
Volvo	48	2,08%	17	1,00%	37	1,75%	182,35%	29,73%	234	1,47%	187	1,42%	25,13%
Puma de Tat	20	0,87%	1	0,06%	31	1,46%	1900,00%	-35,48%	128	0,80%	28	0,21%	357,14%
Hyundai	2	0,09%	4	0,23%	2	0,09%	-50,00%	0,00%	35	0,22%	23	0,17%	52,17%
Land Rover	2	0,09%	6	0,35%		0,00%	-66,67%	N/D	15	0,09%	27	0,20%	-44,44%
Fiat		0,00%		0,00%		0,00%	N/D	N/D	9	0,06%		0,00%	N/D
Peugeot		0,00%		0,00%		0,00%	N/D	N/D	2	0,01%		0,00%	N/D
Total	2.307		1.705		2.118				15.954		13.205		

Participacion por Marcas - Evolucion Mensual

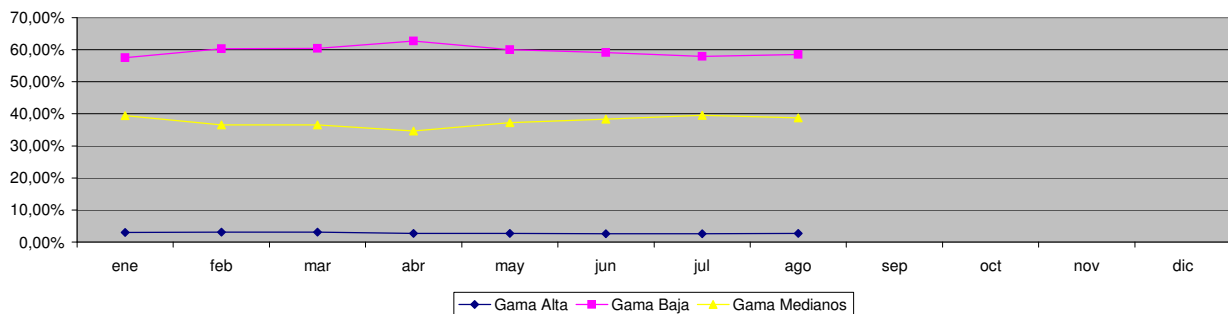




Patentamientos por Ranking de Automoviles - Mercado Total

Ranking Por Modelos - Automoviles												
Rank.	Modelo	ago/07 (a)	ago/06 (b)	jul/07 (c)	Var a-b	Var a-c	Ac. 07	Part %	Ac. 06	Part %	Var 07-06	
1	Volkswagen GOL	4.221	3.363	3.742	25,51%	12,80%	29.808	9,96%	26.072	10,96%	14,33%	
2	Chevrolet CORSA	3.387	2.145	3.024	57,90%	12,00%	24.386	8,15%	16.594	6,97%	46,96%	
3	Peugeot 206	2.138	1.757	2.238	21,68%	-4,47%	20.062	6,71%	15.894	6,68%	26,22%	
4	Renault CLIO	1.707	1.748	1.738	-2,35%	-1,78%	15.895	5,31%	14.952	6,28%	6,31%	
5	Peugeot 307	1.433	867	1.381	65,28%	3,77%	11.842	3,96%	8.207	3,45%	44,29%	
6	Ford FIESTA	1.634	1.159	1.548	40,98%	5,56%	11.649	3,89%	11.670	4,91%	-0,18%	
7	Ford ECOSPORT	1.747	1.484	1.526	17,72%	14,48%	10.995	3,67%	11.377	4,78%	-3,36%	
8	Volkswagen SURAN	1.398	659	1.165	112,14%	20,00%	10.778	3,60%	2.390	1,00%	350,96%	
9	Fiat PALIO	1.450	897	1.220	61,65%	18,85%	10.382	3,47%	8.363	3,52%	24,14%	
10	Renault MEGANE	1.142	962	1.101	18,71%	3,72%	10.250	3,43%	6.638	2,79%	54,41%	
11	Volkswagen FOX/CROSSFOX	1.448	846	1.256	71,16%	15,29%	9.578	3,20%	7.923	3,33%	20,89%	
12	Fiat UNO	1.313	847	834	55,02%	57,43%	8.064	2,70%	6.499	2,73%	24,08%	
13	Fiat SIENA	948	743	764	27,59%	24,08%	7.264	2,43%	5.414	2,28%	34,17%	
14	Chevrolet ASTRA	1.150	692	1.225	66,18%	-6,12%	7.052	2,36%	4.791	2,01%	47,19%	
15	Ford FOCUS	762	463	872	64,58%	-12,61%	7.023	2,35%	4.706	1,98%	49,24%	
16	Chevrolet MERIVA	990	742	1.093	33,42%	-9,42%	6.683	2,23%	5.746	2,42%	16,31%	
17	Ford KA	789	581	653	35,80%	20,83%	6.578	2,20%	4.601	1,93%	42,97%	
18	Chevrolet CORSA II	750	614	574	22,15%	30,66%	6.556	2,19%	5.231	2,20%	25,33%	
19	Volkswagen BORA	646	767	804	-15,78%	-19,65%	6.537	2,18%	6.204	2,61%	5,37%	
20	Suzuki FUN	1.017	888	1.013	14,53%	0,39%	6.318	2,11%	6.898	2,90%	-8,41%	
21	Citroen C3	600	544	569	10,29%	5,45%	6.079	2,03%	5.193	2,18%	17,06%	
22	Toyota COROLLA	621	493	535	25,96%	16,07%	4.968	1,66%	4.203	1,77%	18,20%	
23	Renault MEGANE II	623	200	557	211,50%	11,85%	4.798	1,60%	1.746	0,73%	174,80%	
24	Fiat PALIO WEEKEND	545	339	500	60,77%	9,00%	4.241	1,42%	2.981	1,25%	42,27%	
25	Renault KANGOO	553	364	572	51,92%	-3,32%	4.233	1,41%	2.898	1,22%	46,07%	
26	Chevrolet CORSA SW	476	404	486	17,82%	-2,06%	4.164	1,39%	3.117	1,31%	33,59%	
27	Volkswagen GOL COUNTRY	605	489	393	23,72%	53,94%	3.888	1,30%	5.105	2,15%	-23,84%	
28	Volkswagen POLO	544	544	494	0,00%	10,12%	3.724	1,24%	5.586	2,35%	-33,33%	
29	Fiat IDEA	555	193	590	187,56%	-5,93%	3.688	1,23%	1.927	0,81%	91,39%	
30	Volkswagen VENTO	455	575	368	-20,87%	23,64%	3.554	1,19%	1.552	0,65%	128,99%	
31	Honda FIT	478	260	458	83,85%	4,37%	3.124	1,04%	3.048	1,28%	2,49%	
32	Peugeot PARTNER	391	166	321	135,54%	21,81%	2.601	0,87%	2.155	0,91%	20,70%	
33	Citroen BERLINGO	278	170	313	63,53%	-11,18%	2.318	0,77%	1.616	0,68%	43,44%	
34	Honda CIVIC	389	127	340	206,30%	14,41%	2.274	0,76%	1.410	0,59%	61,28%	
35	Renault SCENIC	177	212	231	-16,51%	-23,38%	2.258	0,75%	2.438	1,02%	-7,38%	
36	Citroen PICASSO	217	254	256	-14,57%	-15,23%	2.102	0,70%	2.007	0,84%	4,73%	
37	Chevrolet VECTRA	242	10	267	2320,00%	-9,36%	1.811	0,61%	106	0,04%	1608,49%	
38	Citroen C4	958		264	N/D	262,88%	1.286	0,43%		0,00%	N/D	
39	Chevrolet ZAFIRA	158	157	185	0,64%	-14,59%	1.249	0,42%	1.163	0,49%	7,39%	
40	Volkswagen GOLF	70	177	64	-60,45%	9,38%	1.188	0,40%	2.619	1,10%	-54,64%	
41	Renault LOGAN	265		592	N/D	-55,24%	1.126	0,38%		0,00%	N/D	
42	Audi A3	129	79	113	63,29%	14,16%	990	0,33%	766	0,32%	29,24%	
43	Volkswagen PASSAT	97	134	68	-27,61%	42,65%	926	0,31%	927	0,39%	-0,11%	
44	BMW 300 SERIES	83	74	73	12,16%	13,70%	851	0,28%	650	0,27%	30,92%	
45	Audi A4	94	103	69	-8,74%	36,23%	781	0,26%	671	0,28%	16,39%	
46	Peugeot 206 SW	86	230	107	-62,61%	-19,63%	771	0,26%	1.695	0,71%	-54,51%	
47	Toyota COROLLA FIELDER	94	64	85	46,88%	10,59%	730	0,24%	635	0,27%	14,96%	
48	Mercedes Benz CLASE C	91	51	73	78,43%	24,66%	669	0,22%	411	0,17%	62,77%	
49	Chrysler PT CRUISER	73	58	79	25,86%	-7,59%	564	0,19%	371	0,16%	52,02%	
50	Peugeot 407	85	73	80	16,44%	6,25%	552	0,18%	747	0,31%	-26,10%	
Total		40.102	28.768	36.873			299.208	1	237.913			

Autos - Participacion por Segmento





08/2007

Informe confidencial para uso exclusivo de los asociados

Patentamientos por Ranking de Livianos y Pesados - Mercado Total

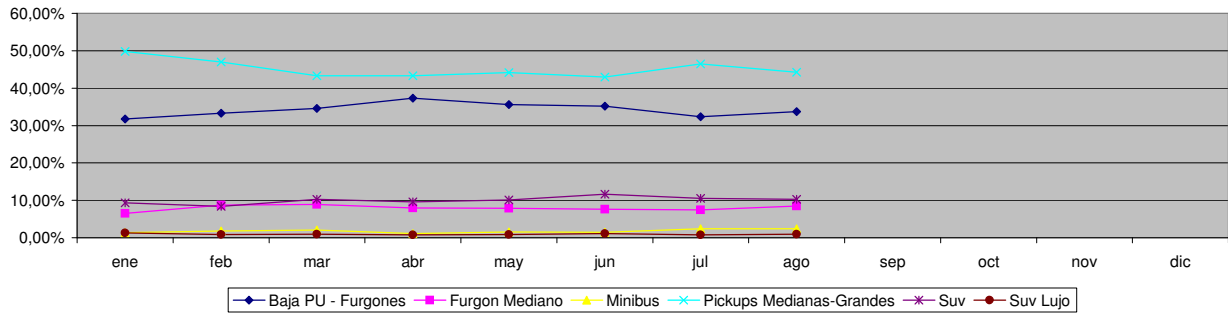
Comercial Liviano											
Rank.	Modelo	ago/07 (a)	ago/06 (b)	jul/07 (c)	Var a-b	Var a-c	Ac. 07	Part %	Ac. 06	Part %	Var 07-06
1	Toyota HILUX	1.492	1.413	1.404	5,59%	6,27%	12.173	18,50%	9.223	17,07%	31,99%
2	Ford RANGER	1.050	972	1.315	8,02%	-20,15%	10.093	15,34%	8.779	16,25%	14,97%
3	Renault KANGOO FURGON	1.001	622	974	60,93%	2,77%	7.666	11,65%	5.254	9,72%	45,91%
4	Chevrolet S-10	1.084	543	870	99,63%	24,60%	6.707	10,19%	8.180	15,14%	-18,01%
5	Peugeot PARTNER FURGON	642	349	578	83,95%	11,07%	5.121	7,78%	3.303	6,11%	55,04%
6	Fiat FIORINO	413	393	349	5,09%	18,34%	3.286	4,99%	2.798	5,18%	17,44%
7	Volkswagen SAVEIRO	484	254	323	90,55%	49,85%	3.096	4,70%	1.926	3,56%	60,75%
8	Citroen BERLINGO FURGON	415	220	373	88,64%	11,26%	2.791	4,24%	1.721	3,19%	62,17%
9	Mercedes Benz SPRINTER	285	225	214	26,67%	33,18%	2.162	3,29%	1.967	3,64%	9,91%
10	Ford F 100	304	247	288	23,08%	5,56%	2.045	3,11%	1.362	2,52%	50,15%
11	Toyota HILUX SW4	194	150	184	29,33%	5,43%	1.628	2,47%	1.429	2,65%	13,93%
12	Renault MASTER	244	122	286	100,00%	-14,69%	1.482	2,25%	1.154	2,14%	28,42%
13	Nissan FRONTIER	215	150	205	43,33%	4,88%	1.444	2,19%	1.502	2,78%	-3,86%
14	Honda CRV	165	98	173	68,37%	-4,62%	1.320	2,01%	945	1,75%	39,68%
15	Fiat STRADA	104	87	116	19,54%	-10,34%	1.063	1,62%	833	1,54%	27,61%
16	Iveco DAILY	155	154	101	0,65%	53,47%	1.027	1,56%	1.062	1,97%	-3,30%
17	Fiat UNO	85	84	76	1,19%	11,84%	761	1,16%	673	1,25%	13,08%
18	Volkswagen CADDY	66	134	94	-50,75%	-29,79%	743	1,13%	674	1,25%	10,24%
19	Mitsubishi L200	80	52	75	53,85%	6,67%	600	0,91%	481	0,89%	24,74%
20	Fiat DUCATO	84	60	64	40,00%	31,25%	599	0,91%	760	1,41%	-21,18%
Total		8.562	6.329	8.062			65.807	1	54.026		

Comercial Pesado											
Rank.	Modelo	ago/07 (a)	ago/06 (b)	jul/07 (c)	Var a-b	Var a-c	Ac. 07	Part %	Ac. 06	Part %	Var 07-06
1	Mercedes Benz LS 1634	165	127	127	29,92%	29,92%	1.231	11,62%	1.098	14,09%	12,11%
2	Ford CARGO 1722	20	94	41	-78,72%	-51,22%	928	8,76%	866	11,12%	7,16%
3	Mercedes Benz OF 1418	106		158	N/D	-32,91%	787	7,43%		0,00%	N/D
4	Volkswagen 17220	141	78	115	80,77%	22,61%	740	6,99%	523	6,71%	41,49%
5	Mercedes Benz L-1624	169		155	N/D	9,03%	724	6,83%		0,00%	N/D
6	Mercedes Benz L-1620	15	135	28	-88,89%	-46,43%	637	6,01%	961	12,34%	-33,71%
7	Iveco 450 E	85	27	88	214,81%	-3,41%	615	5,81%	236	3,03%	160,59%
8	Ford F-4000	80	48	65	66,67%	23,08%	552	5,21%	428	5,49%	28,97%
9	Mercedes Benz L1634	62	58	75	6,90%	-17,33%	538	5,08%	490	6,29%	9,80%
10	Iveco 170 E	69	40	65	72,50%	6,15%	489	4,62%	380	4,88%	28,68%
11	Volkswagen 13180	100	63	61	58,73%	63,93%	471	4,45%	411	5,28%	14,60%
12	Volkswagen 17310	39	41	53	-4,88%	-26,42%	459	4,33%	357	4,58%	28,57%
13	Mercedes Benz 710	51	45	53	13,33%	-3,77%	393	3,71%	281	3,61%	39,86%
14	Mercedes Benz 1315	45	71	62	-36,62%	-27,42%	383	3,62%	459	5,89%	-16,56%
15	Ford CARGO 1722 E	134		127	N/D	5,51%	345	3,26%		0,00%	N/D
16	Ford CARGO 1730	18	37	13	-51,35%	38,46%	334	3,15%	115	1,48%	190,43%
17	Scania R340	42		58	N/D	-27,59%	259	2,45%		0,00%	N/D
18	Renault PREMIUM	50	25	40	100,00%	25,00%	258	2,44%	212	2,72%	21,70%
19	Mercedes Benz OF 1417	2	58	1	-96,55%	100,00%	225	2,12%	727	9,33%	-69,05%
20	Scania P94	29	40	29	-27,50%	0,00%	225	2,12%	246	3,16%	-8,54%
Total		1.422	987	1.414			10.593	1	7.790		

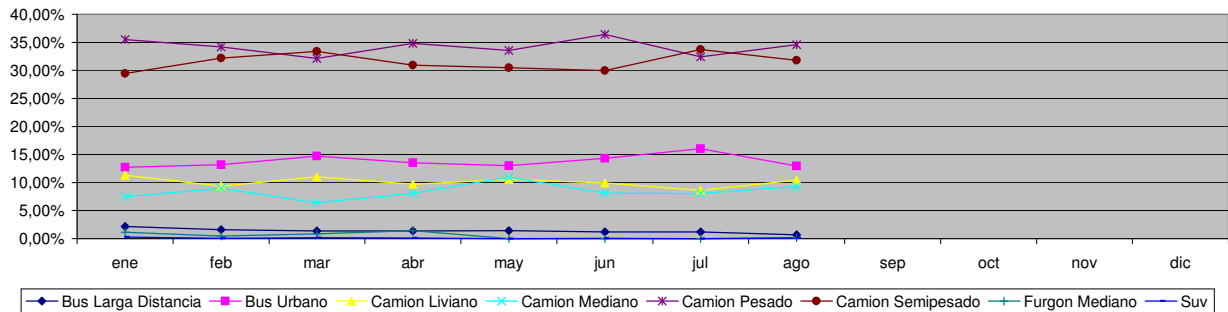


Patentamientos por Ranking de Livianos y Pesados - Mercado Total

Comercial Liviano



Comercial Pesado





Patentamientos por Provincias y Tipos -

Distrito	Automovil+Comercial Liviano							Comercial Pesado+Otros Pesados							Mercado Total					
	ago/07 (a)	ago/06 (b)	jul/07 (c)	Var a-b	Var a-c	Ac. 07	Ac. 06	Var 07-06	ago/07 (a)	ago/06 (b)	jul/07 (c)	Var a-b	Var a-c	Ac. 07	Ac. 06	Var 07-06	Ac. 07	Ac. 06	Var 07-06	Part %
CAPITAL FEDERAL	9.764	7.757	8.963	25,87%	8,94%	73.888	63.943	15,55%	905	640	960	41,41%	-5,73%	6.502	4.830	34,62%	80.460	68.893	16,79%	19,90%
GRAN BUENOS AIRES	8.075	5.591	7.683	44,43%	5,10%	61.100	46.570	31,20%	326	187	271	74,33%	20,30%	2.467	1.678	47,02%	63.605	48.304	31,68%	15,73%
BUENOS AIRES	7.976	5.380	7.595	48,25%	5,02%	59.220	45.838	29,19%	495	327	420	51,38%	17,86%	3.115	2.690	15,80%	62.452	48.714	28,20%	15,44%
CORDOBA	5.226	3.836	4.619	36,24%	13,14%	37.730	32.593	15,76%	340	260	302	30,77%	12,58%	2.101	1.911	9,94%	39.909	34.613	15,30%	9,87%
SANTA FE	5.008	3.453	4.210	45,03%	18,95%	34.538	27.967	23,50%	410	285	288	43,86%	42,36%	2.178	2.018	7,93%	36.810	30.172	22,00%	9,10%
MENDOZA	1.774	1.308	1.659	35,63%	6,93%	13.396	9.832	36,25%	162	145	142	11,72%	14,08%	1.150	1.183	-2,79%	14.563	11.054	31,74%	3,60%
ENTRE RIOS	1.217	782	1.066	55,63%	14,17%	9.178	6.803	34,91%	93	71	96	30,99%	-3,13%	752	679	10,75%	9.942	7.499	32,58%	2,46%
CHUBUT	1.094	956	1.155	14,44%	-5,28%	8.977	7.378	21,67%	80	93	94	-13,98%	-14,89%	731	674	8,46%	9.716	8.073	20,35%	2,40%
NEUQUEN	1.092	898	1.134	21,60%	-3,70%	8.295	6.910	20,04%	73	72	69	1,39%	5,80%	577	606	-4,79%	8.890	7.542	17,87%	2,20%
SALTA	922	579	870	59,24%	5,98%	7.409	5.100	45,27%	78	55	98	41,82%	-20,41%	695	466	49,14%	8.128	5.608	44,94%	2,01%
TUCUMAN	1.017	628	907	61,94%	12,13%	7.484	5.011	49,35%	74	58	70	27,59%	5,71%	517	364	42,03%	8.024	5.400	48,59%	1,98%
CORRIENTES	760	511	748	48,73%	1,60%	6.339	4.739	33,76%	109	63	130	73,02%	-16,15%	752	523	43,79%	7.115	5.304	34,14%	1,76%
CHACO	740	552	685	34,06%	8,03%	5.728	4.544	26,06%	94	37	73	154,05%	28,77%	551	372	48,12%	6.298	4.936	27,59%	1,56%
RIO NEGRO	773	590	837	31,02%	-7,65%	6.049	4.630	30,65%	27	28	28	-3,57%	-3,57%	203	207	-1,93%	6.255	4.842	29,18%	1,55%
SANTA CRUZ	726	544	615	33,46%	18,05%	5.594	4.056	37,92%	72	47	85	53,19%	-15,29%	452	420	7,62%	6.050	4.480	35,04%	1,50%
MISIONES	659	465	652	41,72%	1,07%	5.275	4.447	18,62%	36	35	34	2,86%	5,88%	276	424	-34,91%	5.553	4.891	13,54%	1,37%
TIERRA DEL FUEGO	667	545	616	22,39%	8,28%	4.445	3.652	21,71%	35	35	34	0,00%	2,94%	255	239	6,69%	4.717	3.894	21,14%	1,17%
LA PAMPA	597	335	508	78,21%	17,52%	4.299	3.394	26,66%	30	22	24	36,36%	25,00%	200	151	32,45%	4.504	3.549	26,91%	1,11%
JUJUY	438	278	406	57,55%	7,88%	3.745	2.963	26,39%	66	79	81	-16,46%	-18,52%	652	605	7,77%	4.410	3.596	22,64%	1,09%
SAN JUAN	457	311	392	46,95%	16,58%	3.429	2.760	24,24%	33	45	41	-26,67%	-19,51%	268	226	18,58%	3.701	2.992	23,70%	0,92%
SANTIAGO DEL ESTERO	492	250	399	96,80%	23,31%	3.368	2.317	45,36%	41	19	37	115,79%	10,81%	222	194	14,43%	3.598	2.530	42,21%	0,89%
SAN LUIS	365	266	298	37,22%	22,48%	2.679	2.126	26,01%	20	24	19	-16,67%	5,26%	122	112	8,93%	2.803	2.259	24,08%	0,69%
FORMOSA	298	220	256	35,45%	16,41%	2.410	1.998	20,62%	24	5	31	380,00%	-22,58%	183	75	144,00%	2.593	2.076	24,90%	0,64%
CATAMARCA	301	219	313	37,44%	-3,83%	2.387	1.838	29,87%	8	12	6	-33,33%	33,33%	64	79	-18,99%	2.452	1.921	27,64%	0,61%
LA RIOJA	219	170	179	28,82%	22,35%	1.795	1.502	19,51%	3	11	7	-72,73%	-57,14%	46	102	-54,90%	1.842	1.697	8,54%	0,46%



Patentamientos por Provincias y Tipos -

