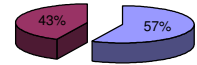




**Patentamientos por Marcas - Mercado Total**

	nov/07(a)	oct/07(b)	nov/06(c)	nov/05(d)	Var a-b	Var a-c	Var a-d	Ac. 07	Ac. 06	Var 07-06
<b>Automovil</b>	29.718	36.614	24.653	21.526	-18,83%	20,55%	38,06%	408.384	323.310	26,31%
<b>Comercial Liviano</b>	7.989	9.297	6.181	5.416	-14,07%	29,25%	47,51%	99.615	79.936	24,62%
<b>Comercial Pesado</b>	1.787	2.291	1.378	1.515	-22,00%	29,68%	17,95%	22.120	18.966	16,63%
<b>Otros Pesados</b>	1.148	1.305	1.073	938	-12,03%	6,99%	22,39%	13.189	10.870	21,33%
<b>Total</b>	<b>40.642</b>	<b>49.507</b>	<b>33.285</b>	<b>29.395</b>	<b>-17,91%</b>	<b>22,10%</b>	<b>38,26%</b>	<b>543.308</b>	<b>433.082</b>	<b>25,45%</b>
<b>Prom. diario</b>	1.847	2.250	1.513	1.336				2.352	1.859	
<b>Dias habiles</b>	22	22	22	22				231	233	

Patentamientos por origen		
	Nov-07	Ac. 07
Importados	22.872	309.167
Nacionales	17.770	234.138



Importados Nacionales

**Patentamientos Mensuales**

	ene	feb	mar	abr	may	jun	jul	ago	sep	oct	nov	díc
2007	82.563	38.847	47.386	41.637	47.236	42.145	50.197	54.288	48.860	49.507	40.642	
2006	65.995	32.439	40.420	34.273	38.305	36.582	36.968	39.132	39.656	36.027	33.285	17.755
<b>Var% 07-06</b>	<b>25,10%</b>	<b>19,75%</b>	<b>17,23%</b>	<b>21,49%</b>	<b>23,32%</b>	<b>15,21%</b>	<b>35,79%</b>	<b>38,73%</b>	<b>23,21%</b>	<b>37,42%</b>	<b>22,10%</b>	<b>-100,00%</b>
2005	52.466	26.364	30.599	32.960	33.469	32.593	34.184	31.927	36.152	30.593	29.395	15.982
2004												

**Patentamientos por Marcas - Totales**

Marca	nov/07(a)		nov/06(c)		oct/07(e)		Var a-c		2007		2006		Var 2007-2006
	Part %	Part %	Part %	Part %	Part %	Part %	ene - nov	Part %	ene - nov	Part %			
Volkswagen	6.735	17,09%	6.397	19,85%	8.831	18,35%	5,28%	-23,73%	101.591	19,18%	84.522	20,05%	20,19%
Chevrolet	5.577	14,15%	5.335	16,56%	7.431	15,44%	4,54%	-24,95%	79.035	14,92%	61.887	14,68%	27,71%
Ford	6.244	15,84%	4.654	14,44%	7.221	15,00%	34,16%	-13,53%	72.832	13,75%	61.621	14,61%	18,19%
Renault	4.828	12,25%	3.699	11,48%	5.178	10,76%	30,52%	-6,76%	64.792	12,23%	47.144	11,18%	37,43%
Peugeot	4.219	10,70%	3.571	11,08%	4.725	9,82%	18,15%	-10,71%	55.224	10,42%	43.620	10,35%	26,60%
Fiat	4.026	10,21%	3.253	10,10%	4.678	9,72%	23,76%	-13,94%	53.203	10,04%	41.748	9,90%	27,44%
Toyota	1.926	4,89%	1.542	4,79%	2.528	5,25%	24,90%	-23,81%	27.058	5,11%	21.371	5,07%	26,61%
Citroen	1.725	4,38%	949	2,95%	2.076	4,31%	81,77%	-16,91%	20.528	3,87%	14.006	3,32%	46,57%
Mercedes Benz	835	2,12%	659	2,05%	1.213	2,52%	26,71%	-31,16%	12.683	2,39%	10.762	2,55%	17,85%
Honda	1.033	2,62%	349	1,08%	1.251	2,60%	195,99%	-17,43%	10.633	2,01%	7.171	1,70%	48,28%
Suzuki	572	1,45%	533	1,65%	848	1,76%	7,32%	-32,55%	9.315	1,76%	9.795	2,32%	-4,90%
Iveco	257	0,65%	217	0,67%	335	0,70%	18,43%	-23,28%	3.415	0,64%	2.874	0,68%	18,82%
Nissan	206	0,52%	280	0,87%	295	0,61%	-26,43%	-30,17%	3.119	0,59%	3.061	0,73%	1,89%
Audi	152	0,39%	126	0,39%	238	0,49%	20,63%	-36,13%	2.667	0,50%	2.054	0,49%	29,84%
BMW	107	0,27%	70	0,22%	169	0,35%	52,86%	-36,69%	2.227	0,42%	1.657	0,39%	34,40%
Hyundai	214	0,54%	84	0,26%	243	0,50%	154,76%	-11,93%	1.987	0,38%	844	0,20%	135,43%
Kia	127	0,32%	100	0,31%	180	0,37%	27,00%	-29,44%	1.753	0,33%	1.118	0,27%	56,80%
Scania	158	0,40%	119	0,37%	167	0,35%	32,77%	-5,39%	1.551	0,29%	1.788	0,42%	-13,26%
Mitsubishi	97	0,25%	50	0,16%	72	0,15%	94,00%	34,72%	1.101	0,21%	847	0,20%	29,99%
Jeep	71	0,18%	30	0,09%	73	0,15%	136,67%	-2,74%	1.068	0,20%	640	0,15%	66,88%
Chrysler	77	0,20%	40	0,12%	98	0,20%	92,50%	-21,43%	992	0,19%	670	0,16%	48,06%
Volvo	81	0,21%	52	0,16%	74	0,15%	55,77%	9,46%	741	0,14%	448	0,11%	65,40%
Agrale	49	0,12%	12	0,04%	42	0,09%	308,33%	16,67%	449	0,08%	346	0,08%	29,77%
Dodge	8	0,02%	21	0,07%	33	0,07%	-61,90%	-75,76%	411	0,08%	358	0,08%	14,80%
Subaru	23	0,06%	23	0,07%	34	0,07%	0,00%	-32,35%	389	0,07%	232	0,06%	67,67%
Mini	17	0,04%	13	0,04%	34	0,07%	30,77%	-50,00%	364	0,07%	281	0,07%	29,54%
Land Rover	10	0,03%	19	0,06%	14	0,03%	-47,37%	-28,57%	198	0,04%	250	0,06%	-20,80%
Puma de Tat	11	0,03%	8	0,02%	22	0,05%	37,50%	-50,00%	182	0,03%	56	0,01%	225,00%
Porsche	8	0,02%	3	0,01%	10	0,02%	166,67%	-20,00%	110	0,02%	101	0,02%	8,91%
Seat	17	0,04%		0,00%	14	0,03%	N/D	21,43%	69	0,01%	11	0,00%	527,27%
Alfa Romeo	5	0,01%	7	0,02%	4	0,01%	-28,57%	25,00%	64	0,01%	43	0,01%	48,84%
Jaguar	1	0,00%	1	0,00%		0,00%	0,00%	N/D	13	0,00%	15	0,00%	-13,33%
Isuzu		0,00%	4	0,01%		0,00%	-100,00%	N/D	9	0,00%	278	0,07%	-96,76%
Hummer		0,00%	1	0,00%		0,00%	-100,00%	N/D	7	0,00%	16	0,00%	-56,25%
Ferrari		0,00%	2	0,01%	1	0,00%	-100,00%	-100,00%	5	0,00%	2	0,00%	150,00%
Maserati		0,00%		0,00%		0,00%	N/D	N/D	3	0,00%		0,00%	N/D
Lexus		0,00%		0,00%		0,00%	N/D	N/D	1	0,00%	2	0,00%	-50,00%
<b>Total</b>	<b>39.416</b>		<b>32.223</b>		<b>48.132</b>				<b>529.789</b>		<b>421.639</b>		



**Patentamientos por Marcas - Mercado Total**

Patentamientos por Marcas - Autos + Livianos								2007	2007	2006	2006	Var	
Marca	nov/07(a)	Part %	nov/06(c)	Part %	oct/07(e)	Part %	Var a-c	Var a-e	ene - nov	Part %	ene - nov	Part %	2007-2006
Volkswagen	6.512	17,27%	6.133	19,89%	8.463	18,43%	6,18%	-23,05%	98.243	19,34%	81.822	20,29%	20,07%
Chevrolet	5.577	14,79%	5.335	17,30%	7.431	16,19%	4,54%	-24,95%	79.035	15,56%	61.887	15,35%	27,71%
Ford	5.812	15,41%	4.305	13,96%	6.768	14,74%	35,01%	-14,13%	68.118	13,41%	57.450	14,25%	18,57%
Renault	4.761	12,63%	3.593	11,65%	5.129	11,17%	32,51%	-7,17%	63.899	12,58%	46.579	11,55%	37,18%
Peugeot	4.219	11,19%	3.571	11,58%	4.725	10,29%	18,15%	-10,71%	55.224	10,87%	43.620	10,82%	26,60%
Fiat	4.026	10,68%	3.253	10,55%	4.678	10,19%	23,76%	-13,94%	53.203	10,47%	41.748	10,35%	27,44%
Toyota	1.926	5,11%	1.542	5,00%	2.528	5,51%	24,90%	-23,81%	27.058	5,33%	21.371	5,30%	26,61%
Citroen	1.725	4,57%	949	3,08%	2.076	4,52%	81,77%	-16,91%	20.528	4,04%	14.006	3,47%	46,57%
Honda	1.033	2,74%	349	1,13%	1.251	2,72%	195,99%	-17,43%	10.633	2,09%	7.171	1,78%	48,28%
Suzuki	572	1,52%	533	1,73%	848	1,85%	7,32%	-32,55%	9.315	1,83%	9.795	2,43%	-4,90%
Mercedes Benz	294	0,78%	293	0,95%	390	0,85%	0,34%	-24,62%	4.557	0,90%	3.746	0,93%	21,65%
Nissan	206	0,55%	280	0,91%	295	0,64%	-26,43%	-30,17%	3.119	0,61%	3.061	0,76%	1,89%
Audi	152	0,40%	126	0,41%	238	0,52%	20,63%	-36,13%	2.667	0,53%	2.054	0,51%	29,84%
BMW	107	0,28%	70	0,23%	169	0,37%	52,86%	-36,69%	2.227	0,44%	1.657	0,41%	34,40%
Hyundai	214	0,57%	78	0,25%	242	0,53%	174,36%	-11,57%	1.950	0,38%	805	0,20%	142,24%
Kia	127	0,34%	100	0,32%	180	0,39%	27,00%	-29,44%	1.753	0,35%	1.118	0,28%	56,80%
Iveco	73	0,19%	91	0,30%	75	0,16%	-19,78%	-2,67%	1.265	0,25%	1.414	0,35%	-10,54%
Mitsubishi	97	0,26%	50	0,16%	72	0,16%	94,00%	34,72%	1.101	0,22%	847	0,21%	29,99%
Jeep	71	0,19%	30	0,10%	73	0,16%	136,67%	-2,74%	1.068	0,21%	640	0,16%	66,88%
Chrysler	77	0,20%	40	0,13%	98	0,21%	92,50%	-21,43%	992	0,20%	670	0,17%	48,06%
Dodge	8	0,02%	21	0,07%	33	0,07%	-61,90%	-75,76%	411	0,08%	358	0,09%	14,80%
Volvo	37	0,10%	17	0,06%	38	0,08%	117,65%	-2,63%	397	0,08%	175	0,04%	126,86%
Subaru	23	0,06%	23	0,07%	34	0,07%	0,00%	-32,35%	389	0,08%	232	0,06%	67,67%
Mini	17	0,05%	13	0,04%	34	0,07%	30,77%	-50,00%	364	0,07%	281	0,07%	29,54%
Land Rover	10	0,03%	19	0,06%	14	0,03%	-47,37%	-28,57%	198	0,04%	250	0,06%	-20,80%
Porsche	8	0,02%	3	0,01%	10	0,02%	166,67%	-20,00%	110	0,02%	101	0,03%	8,91%
Seat	17	0,05%		0,00%	14	0,03%	N/D	21,43%	69	0,01%	11	0,00%	527,27%
Alfa Romeo	5	0,01%	7	0,02%	4	0,01%	-28,57%	25,00%	64	0,01%	43	0,01%	48,84%
Jaguar	1	0,00%	1	0,00%		0,00%	0,00%	N/D	13	0,00%	15	0,00%	-13,33%
Isuzu		0,00%	4	0,01%		0,00%	-100,00%	N/D	9	0,00%	278	0,07%	-96,76%
Hummer		0,00%	1	0,00%		0,00%	-100,00%	N/D	7	0,00%	16	0,00%	-56,25%
Ferrari		0,00%	2	0,01%	1	0,00%	-100,00%	-100,00%	5	0,00%	2	0,00%	150,00%
Maserati		0,00%		0,00%		0,00%	N/D	N/D	3	0,00%		0,00%	N/D
Agrale		0,00%		0,00%		0,00%	N/D	N/D	2	0,00%	4	0,00%	-50,00%
Lexus		0,00%		0,00%		0,00%	N/D	N/D	1	0,00%	2	0,00%	-50,00%
<b>Total</b>	<b>37.707</b>		<b>30.832</b>		<b>45.911</b>				<b>507.997</b>		<b>403.229</b>		

Patentamientos por Marcas - Camiones + Buses								2007	2007	2006	2006	Var	
Marca	nov/07(a)	Part %	nov/06(c)	Part %	oct/07(e)	Part %	Var a-c	Var a-e	ene - nov	Part %	ene - nov	Part %	2007-2006
Mercedes Benz	541	31,66%	366	26,31%	823	37,06%	47,81%	-34,26%	8.126	37,29%	7.016	38,11%	15,82%
Ford	432	25,28%	349	25,09%	453	20,40%	23,78%	-4,64%	4.714	21,63%	4.171	22,66%	13,02%
Volkswagen	223	13,05%	264	18,98%	368	16,57%	-15,53%	-39,40%	3.348	15,36%	2.700	14,67%	24,00%
Iveco	184	10,77%	126	9,06%	260	11,71%	46,03%	-29,23%	2.150	9,87%	1.460	7,93%	47,26%
Scania	158	9,25%	119	8,55%	167	7,52%	32,77%	-5,39%	1.551	7,12%	1.788	9,71%	-13,26%
Renault	67	3,92%	106	7,62%	49	2,21%	-36,79%	36,73%	893	4,10%	565	3,07%	58,05%
Agrale	49	2,87%	12	0,86%	42	1,89%	308,33%	16,67%	447	2,05%	342	1,86%	30,70%
Volvo	44	2,57%	35	2,52%	36	1,62%	25,71%	22,22%	344	1,58%	273	1,48%	26,01%
Puma de Tat	11	0,64%	8	0,58%	22	0,99%	37,50%	-50,00%	182	0,84%	56	0,30%	225,00%
Hyundai		0,00%	6	0,43%	1	0,05%	-100,00%	-100,00%	37	0,17%	39	0,21%	-5,13%
<b>Total</b>	<b>1.709</b>		<b>1.391</b>		<b>2.221</b>				<b>21.792</b>		<b>18.410</b>		

**Participacion por Marcas - Evolucion Mensual**

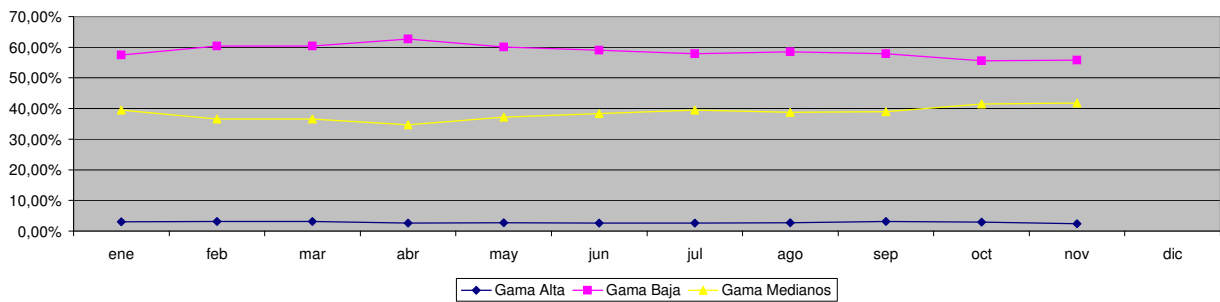




**Patentamientos por Ranking de Automoviles - Mercado Total**

Ranking Por Modelos - Automoviles												
Rank	Modelo	nov/07 (a)	nov/06 (b)	oct/07 (c)	Var a-b	Var a-c	Ac. 07	Part %	Ac. 06	Part %	Var 07-06	
1	Volkswagen GOL	2.589	2.644	3.006	-2,08%	-13,87%	38.601	9,68%	34.704	10,97%	11,23%	
2	Chevrolet CORSA	2.172	2.040	2.934	6,47%	-25,97%	32.393	8,12%	23.063	7,29%	40,45%	
3	Peugeot 206	2.069	1.843	2.238	12,26%	-7,55%	26.337	6,60%	21.241	6,72%	23,99%	
4	Renault CLIO	1.212	1.547	1.424	-21,65%	-14,89%	20.215	5,07%	19.489	6,16%	3,73%	
5	Ford FIESTA	1.237	980	1.692	26,22%	-26,89%	16.147	4,05%	14.891	4,71%	8,43%	
6	Peugeot 307	1.157	689	1.402	67,92%	-17,48%	15.770	3,95%	10.784	3,41%	46,24%	
7	Ford ECOSPORT	1.186	1.235	1.579	-3,97%	-24,89%	15.427	3,87%	15.557	4,92%	-0,84%	
8	Volkswagen SURAN	1.027	700	1.270	46,71%	-19,13%	14.493	3,63%	4.556	1,44%	218,11%	
9	Fiat PALIO	831	732	1.035	13,52%	-19,71%	13.343	3,35%	11.038	3,49%	20,88%	
10	Volkswagen FOX/CROSSFOX	685	621	1.100	10,31%	-37,73%	12.779	3,20%	10.201	3,23%	25,27%	
11	Renault MEGANE	674	785	531	-14,14%	26,93%	12.253	3,07%	9.364	2,96%	30,85%	
12	Fiat UNO	755	607	888	24,38%	-14,98%	10.806	2,71%	8.715	2,76%	23,99%	
13	Ford KA	990	571	992	73,38%	-0,20%	9.583	2,40%	5.990	1,89%	59,98%	
14	Ford FOCUS	726	493	910	47,26%	-20,22%	9.440	2,37%	6.465	2,04%	46,02%	
15	Fiat SIENA	701	571	685	22,77%	2,34%	9.392	2,35%	7.403	2,34%	26,87%	
16	Chevrolet ASTRA	641	539	818	18,92%	-21,64%	9.197	2,31%	6.556	2,07%	40,28%	
17	Chevrolet CORSA II	736	619	938	18,90%	-21,54%	9.053	2,27%	7.214	2,28%	25,49%	
18	Chevrolet MERIVA	563	724	790	-22,24%	-28,73%	8.752	2,19%	7.923	2,51%	10,46%	
19	Volkswagen BORA	587	493	1.032	19,07%	-43,12%	8.633	2,16%	7.863	2,49%	9,79%	
20	Suzuki FUN	478	509	711	-6,09%	-32,77%	8.312	2,08%	9.056	2,86%	-8,22%	
21	Citroen C3	328	390	435	-15,90%	-24,60%	7.376	1,85%	6.580	2,08%	12,10%	
22	Toyota COROLLA	442	309	590	43,04%	-25,08%	6.642	1,67%	5.576	1,76%	19,12%	
23	Renault MEGANE II	552	121	628	356,20%	-12,10%	6.614	1,66%	2.152	0,68%	207,34%	
24	Renault KANGOO	623	274	607	127,37%	2,64%	6.080	1,52%	3.930	1,24%	54,71%	
25	Fiat PALIO WEEKEND	360	392	539	-8,16%	-33,21%	5.645	1,42%	4.319	1,37%	30,70%	
26	Chevrolet CORSA SW	363	454	512	-20,04%	-29,10%	5.457	1,37%	4.441	1,40%	22,88%	
27	Volkswagen GOL COUNTRY	245	454	397	-46,04%	-38,29%	5.171	1,30%	6.470	2,05%	-20,08%	
28	Volkswagen POLO	441	393	440	12,21%	0,23%	5.035	1,26%	6.926	2,19%	-27,30%	
29	Fiat IDEA	353	248	405	42,34%	-12,84%	4.911	1,23%	2.666	0,84%	84,21%	
30	Honda FIT	532	189	578	181,48%	-7,96%	4.778	1,20%	3.703	1,17%	29,03%	
31	Volkswagen VENTO	337	228	405	47,81%	-16,79%	4.754	1,19%	2.429	0,77%	95,72%	
32	Citroen C4	776		879	N/D	-11,72%	3.510	0,88%		0,00%	N/D	
33	Peugeot PARTNER	256	247	326	3,64%	-21,47%	3.502	0,88%	2.845	0,90%	23,09%	
34	Honda CIVIC	239	43	363	455,81%	-34,16%	3.139	0,79%	1.703	0,54%	84,32%	
35	Citroen BERLINGO	182	197	246	-7,61%	-26,02%	2.981	0,75%	2.205	0,70%	35,19%	
36	Renault SCENIC	165	224	168	-26,34%	-1,79%	2.805	0,70%	3.146	0,99%	-10,84%	
37	Chevrolet VECTRA	206	138	309	49,28%	-33,33%	2.704	0,68%	513	0,16%	427,10%	
38	Citroen PICASSO	176	176	193	0,00%	-8,81%	2.601	0,65%	2.609	0,82%	-0,31%	
39	Chevrolet ZAFIRA	149	174	172	-14,37%	-13,37%	1.724	0,43%	1.622	0,51%	6,29%	
40	Renault LOGAN	206		197	N/D	4,57%	1.679	0,42%		0,00%	N/D	
41	Volkswagen GOLF	76	136	143	-44,12%	-46,85%	1.534	0,38%	3.089	0,98%	-50,34%	
42	Volkswagen PASSAT	100	82	134	21,95%	-25,37%	1.265	0,32%	1.200	0,38%	5,42%	
43	Audi A3	73	48	107	52,08%	-31,78%	1.265	0,32%	959	0,30%	31,91%	
44	BMW 300 SERIES	48	30	75	60,00%	-36,00%	1.126	0,28%	786	0,25%	43,26%	
45	Peugeot 206 SW	104	134	75	-22,39%	38,67%	1.038	0,26%	2.094	0,66%	-50,43%	
46	Audi A4	50	50	85	0,00%	-41,18%	1.025	0,26%	868	0,27%	18,09%	
47	Toyota COROLLA FIELDER	70	67	76	4,48%	-7,89%	966	0,24%	861	0,27%	12,20%	
48	Renault MEGANE II GRAND TOUR	111		136	N/D	-18,38%	913	0,23%		0,00%	N/D	
49	Mercedes Benz CLASE C	46	20	84	130,00%	-45,24%	882	0,22%	496	0,16%	77,82%	
50	Fiat PUNTO	377		372	N/D	1,34%	824	0,21%		0,00%	N/D	
<b>Total</b>		<b>29.002</b>	<b>24.160</b>	<b>35.651</b>			<b>398.872</b>	<b>1</b>	<b>316.261</b>			

**Autos - Participacion por Segmento**





**Patentamientos por Ranking de Livianos y Pesados - Mercado Total**

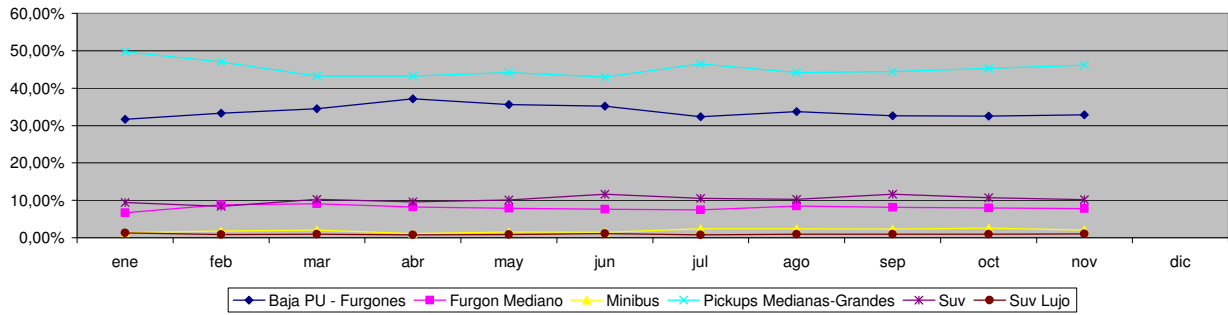
Comercial Liviano											
Rank.	Modelo	nov/07 (a)	nov/06 (b)	oct/07 (c)	Var a-b	Var a-c	Ac. 07	Part %	Ac. 06	Part %	Var 07-06
1	Toyota HILUX	1.216	995	1.556	22,21%	-21,85%	16.361	18,30%	12.755	17,77%	28,27%
2	Ford RANGER	1.388	849	1.201	63,49%	15,57%	13.819	15,45%	11.591	16,15%	19,22%
3	Renault KANGOO FURGON	961	459	1.091	109,37%	-11,92%	10.590	11,84%	6.753	9,41%	56,82%
4	Chevrolet S-10	704	601	906	17,14%	-22,30%	9.225	10,32%	9.944	13,85%	-7,23%
5	Peugeot PARTNER FURGON	527	522	534	0,96%	-1,31%	6.728	7,52%	4.660	6,49%	44,38%
6	Fiat FIORINO	375	366	430	2,46%	-12,79%	4.521	5,06%	3.732	5,20%	21,14%
7	Volkswagen SAVEIRO	265	227	375	16,74%	-29,33%	4.170	4,66%	2.673	3,72%	56,00%
8	Citroen BERLINGO FURGON	228	160	297	42,50%	-23,23%	3.657	4,09%	2.361	3,29%	54,89%
9	Mercedes Benz SPRINTER	214	219	239	-2,28%	-10,46%	2.814	3,15%	2.631	3,67%	6,96%
10	Ford F 100	197	108	238	82,41%	-17,23%	2.718	3,04%	1.843	2,57%	47,48%
11	Renault MASTER	226	161	314	40,37%	-28,03%	2.411	2,70%	1.696	2,36%	42,16%
12	Toyota HILUX SW4	141	127	182	11,02%	-22,53%	2.145	2,40%	1.804	2,51%	18,90%
13	Honda CRV	229	84	266	172,62%	-13,91%	2.101	2,35%	1.214	1,69%	73,06%
14	Nissan FRONTIER	100	216	221	-53,70%	-54,75%	1.945	2,18%	2.042	2,85%	-4,75%
15	Fiat STRADA	83	108	99	-23,15%	-16,16%	1.355	1,52%	1.114	1,55%	21,63%
16	Iveco DAILY	73	91	75	-19,78%	-2,67%	1.265	1,41%	1.414	1,97%	-10,54%
17	Fiat UNO	79	82	96	-3,66%	-17,71%	1.029	1,15%	907	1,26%	13,45%
18	Volkswagen CADDY	66	120	51	-45,00%	29,41%	930	1,04%	1.029	1,43%	-9,62%
19	Fiat DUCATO	89	85	88	4,71%	1,14%	855	0,96%	1.019	1,42%	-16,09%
20	Mitsubishi L200	74	33	54	124,24%	37,04%	777	0,87%	593	0,83%	31,03%
<b>Total</b>		<b>7.235</b>	<b>5.613</b>	<b>8.313</b>			<b>89.416</b>	<b>1</b>	<b>71.775</b>		

Comercial Pesado											
Rank.	Modelo	nov/07 (a)	nov/06 (b)	oct/07 (c)	Var a-b	Var a-c	Ac. 07	Part %	Ac. 06	Part %	Var 07-06
1	Mercedes Benz LS 1634	91	119	123	-23,53%	-26,02%	1.547	10,87%	1.456	14,97%	6,25%
2	Mercedes Benz L-1624	110		153	N/D	-28,10%	1.118	7,86%		0,00%	N/D
3	Mercedes Benz OF 1418	56		130	N/D	-56,92%	1.100	7,73%		0,00%	N/D
4	Volkswagen 17220	52	74	104	-29,73%	-50,00%	1.009	7,09%	775	7,97%	30,19%
5	Ford CARGO 1722	12	115	8	-89,57%	50,00%	958	6,73%	1.184	12,18%	-19,09%
6	Iveco 450 E	46	67	87	-31,34%	-47,13%	838	5,89%	395	4,06%	112,15%
7	Iveco 170 E	103	36	121	186,11%	-14,88%	796	5,59%	490	5,04%	62,45%
8	Ford F-4000	64	48	72	33,33%	-11,11%	752	5,28%	577	5,93%	30,33%
9	Ford CARGO 1722 E	145		125	N/D	16,00%	705	4,95%		0,00%	N/D
10	Mercedes Benz L1634	40	34	60	17,65%	-33,33%	697	4,90%	640	6,58%	8,91%
11	Volkswagen 13180	59	44	68	34,09%	-13,24%	675	4,74%	590	6,07%	14,41%
12	Mercedes Benz L-1620	3	98	12	-96,94%	-75,00%	663	4,66%	1.288	13,25%	-48,52%
13	Mercedes Benz 1315	24	6	52	300,00%	-53,85%	532	3,74%	614	6,31%	-13,36%
14	Mercedes Benz 710	34	35	51	-2,86%	-33,33%	526	3,70%	412	4,24%	27,67%
15	Volkswagen 17310	11	43	12	-74,42%	-8,33%	494	3,47%	483	4,97%	2,28%
16	Ford CARGO 1832 E	80		77	N/D	3,90%	410	2,88%		0,00%	N/D
17	Scania R340	44		52	N/D	-15,38%	395	2,78%		0,00%	N/D
18	Renault PREMIUM	47	35	31	34,29%	51,61%	369	2,59%	310	3,19%	19,03%
19	Ford CARGO 1730	4	32	8	-87,50%	-50,00%	357	2,51%	212	2,18%	68,40%
20	Scania P94	16	32	19	-50,00%	-15,79%	288	2,02%	298	3,06%	-3,36%
<b>Total</b>		<b>1.041</b>	<b>818</b>	<b>1.365</b>			<b>14.229</b>	<b>1</b>	<b>9.724</b>		

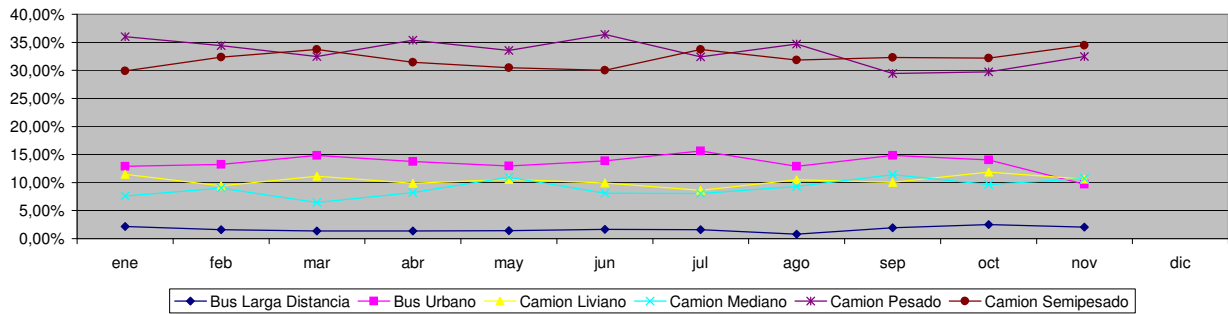


**Patentamientos por Ranking de Livianos y Pesados - Mercado Total**

**Comercial Liviano**



**Comercial Pesado**



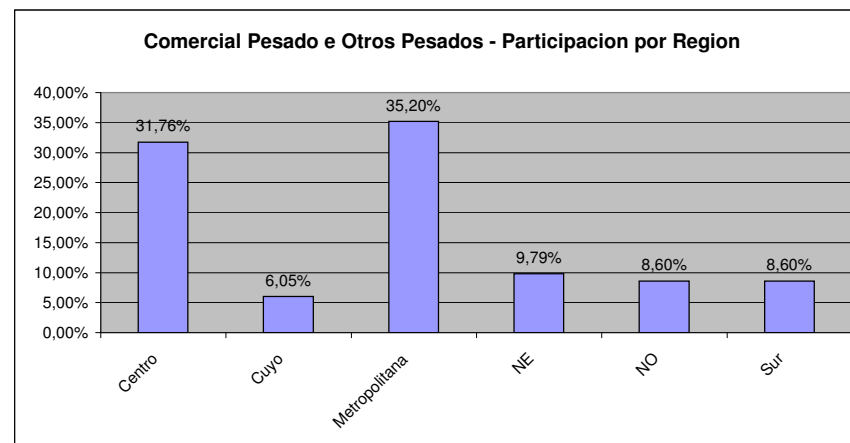
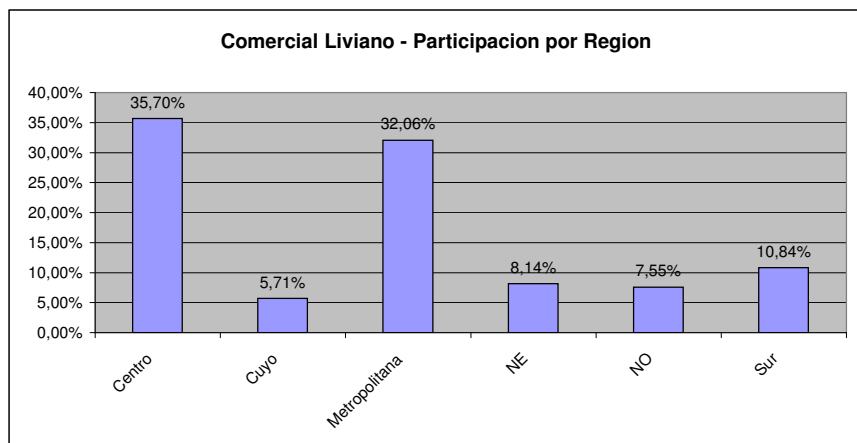
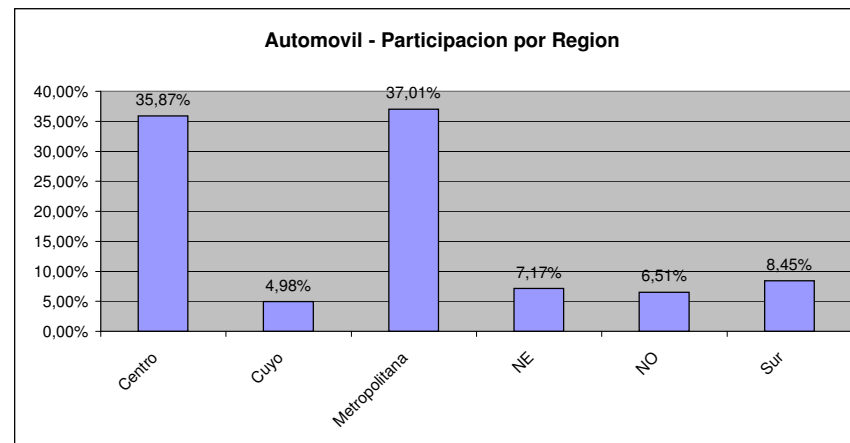
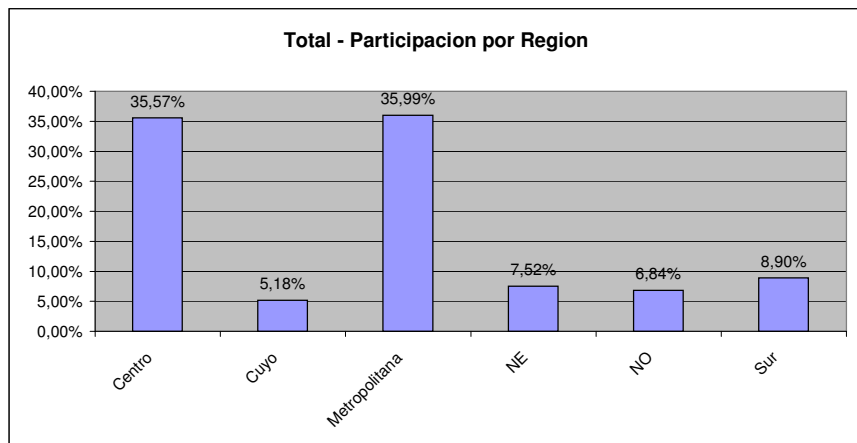


**Patentamientos por Provincias y Tipos -**

Distrito	Automovil+Comercial Liviano							Comercial Pesado+Otros Pesados							Mercado Total					
	nov/07 (a)	nov/06 (b)	oct/07 (c)	Var a-b	Var a-c	Ac. 07	Ac. 06	Var 07-06	nov/07 (a)	nov/06 (b)	oct/07 (c)	Var a-b	Var a-c	Ac. 07	Ac. 06	Var 07-06	Ac. 07	Ac. 06	Var 07-06	Part %
CAPITAL FEDERAL	8.892	8.155	9.508	9,04%	-6,48%	101.340	87.567	15,73%	812	575	917	41,22%	-11,45%	9.130	6.939	31,58%	110.470	94.506	16,89%	20,33%
GRAN BUENOS AIRES	6.312	5.786	7.284	9,09%	-13,34%	81.751	64.030	27,68%	192	185	325	3,78%	-40,92%	3.299	2.485	32,76%	85.050	66.515	27,87%	15,65%
BUENOS AIRES	5.951	4.432	7.079	34,27%	-15,93%	79.247	60.572	30,83%	399	330	442	20,91%	-9,73%	4.501	3.844	17,09%	83.748	64.416	30,01%	15,41%
CORDOBA	3.287	2.639	4.648	24,55%	-29,28%	50.411	41.886	20,35%	312	207	349	50,72%	-10,60%	3.101	2.586	19,91%	53.512	44.472	20,33%	9,85%
SANTA FE	3.301	2.326	4.404	41,92%	-25,05%	46.718	36.609	27,61%	297	224	384	32,59%	-22,66%	3.311	2.967	11,59%	50.029	39.576	26,41%	9,21%
MENDOZA	1.175	851	1.582	38,07%	-25,73%	17.853	12.895	38,45%	119	151	183	-21,19%	-34,97%	1.614	1.669	-3,30%	19.467	14.564	33,67%	3,58%
ENTRE RIOS	746	530	979	40,75%	-23,80%	11.921	8.803	35,42%	81	59	90	37,29%	-10,00%	1.041	924	12,66%	12.962	9.727	33,26%	2,39%
CHUBUT	891	812	1.006	9,73%	-11,43%	11.913	9.985	19,31%	86	106	96	-18,87%	-10,42%	1.001	1.017	-1,57%	12.914	11.002	17,38%	2,38%
NEUQUEN	848	730	943	16,16%	-10,07%	11.111	9.250	20,12%	62	65	84	-4,62%	-26,19%	818	856	-4,44%	11.929	10.106	18,04%	2,20%
SALTA	641	467	823	37,26%	-22,11%	9.765	6.697	45,81%	94	55	94	70,91%	0,00%	1.001	704	42,19%	10.766	7.401	45,47%	1,98%
TUCUMAN	596	413	837	44,31%	-28,79%	9.699	6.628	46,33%	41	31	71	32,26%	-42,25%	689	508	35,63%	10.388	7.136	45,57%	1,91%
CORRIENTES	488	354	682	37,85%	-28,45%	8.127	6.016	35,09%	67	69	87	-2,90%	-22,99%	1.018	801	27,09%	9.145	6.817	34,15%	1,68%
RIO NEGRO	618	492	777	25,61%	-20,46%	8.220	6.266	31,18%	32	28	24	14,29%	33,33%	284	279	1,79%	8.504	6.545	29,93%	1,57%
SANTA CRUZ	644	454	717	41,85%	-10,18%	7.604	5.555	36,89%	48	59	57	-18,64%	-15,79%	609	594	2,53%	8.213	6.149	33,57%	1,51%
CHACO	435	318	585	36,79%	-25,64%	7.351	5.769	27,42%	66	40	82	65,00%	-19,51%	786	568	38,38%	8.137	6.337	28,40%	1,50%
MISIONES	349	232	640	50,43%	-45,47%	6.893	5.435	26,83%	29	33	48	-12,12%	-39,58%	380	551	-31,03%	7.273	5.986	21,50%	1,34%
TIERRA DEL FUEGO	601	603	716	-0,33%	-16,06%	6.450	5.459	18,15%	12	45	33	-73,33%	-63,64%	326	347	-6,05%	6.776	5.806	16,71%	1,25%
LA PAMPA	379	267	495	41,95%	-23,43%	5.674	4.398	29,01%	33	22	33	50,00%	0,00%	301	210	43,33%	5.975	4.608	29,67%	1,10%
JUJUY	246	178	391	38,20%	-37,08%	4.807	3.603	33,42%	66	51	87	29,41%	-24,14%	897	850	5,53%	5.704	4.453	28,09%	1,05%
SAN JUAN	301	165	429	82,42%	-29,84%	4.598	3.446	33,43%	28	33	31	-15,15%	-9,68%	356	323	10,22%	4.954	3.769	31,44%	0,91%
SANTIAGO DEL ESTERO	193	121	282	59,50%	-31,56%	4.251	2.880	47,60%	24	38	19	-36,84%	26,32%	293	285	2,81%	4.544	3.165	43,57%	0,84%
SAN LUIS	294	183	308	60,66%	-4,55%	3.578	2.782	28,61%	10	16	16	-37,50%	-37,50%	165	178	-7,30%	3.743	2.960	26,45%	0,69%
CATAMARCA	247	109	293	126,61%	-15,70%	3.271	2.312	41,48%	8	13	12	-38,46%	-33,33%	91	115	-20,87%	3.362	2.427	38,52%	0,62%
FORMOSA	143	111	296	28,83%	-51,69%	3.114	2.479	25,62%	11	7	25	57,14%	-56,00%	231	106	117,92%	3.345	2.585	29,40%	0,62%
LA RIOJA	129	106	207	21,70%	-37,68%	2.332	1.924	21,21%	6	9	7	-33,33%	-14,29%	66	130	-49,23%	2.398	2.054	16,75%	0,44%



**Patentamientos por Provincias y Tipos -**





**Patentamientos por Regiones de Buenos Aires**

Subregion	Automovil+Comercial Liviano								Comercial Pesado+Otros Pesados								Mercado Total		
	nov/07 (a)	nov/06 (b)	oct/07 (c)	Var a-b	Var a-c	Ac. 07	Ac. 06	Var 07-06	nov/07 (a)	nov/06 (b)	oct/07 (c)	Var a-b	Var a-c	Ac. 07	Ac. 06	Var 07-06	Ac. 07	Ac. 06	Var 07-06
GRAN BUENOS AIRES-OESTE	2.449	2.281	2.843	7,37%	-13,86%	32.582	24.937	30,66%	81	78	153	3,85%	-47,06%	1.408	1.102	27,77%	33.990	26.039	30,53%
GRAN BUENOS AIRES-SUR	2.343	2.096	2.651	11,78%	-11,62%	29.334	22.667	29,41%	78	93	112	-16,13%	-30,36%	1.344	987	36,17%	30.678	23.654	29,69%
GRAN BUENOS AIRES-NORTE	1.520	1.409	1.790	7,88%	-15,08%	19.835	16.426	20,75%	33	14	60	135,71%	-45,00%	547	396	38,13%	20.382	16.822	21,16%
BUENOS AIRES-NORTE	1.268	923	1.593	37,38%	-20,40%	16.949	12.906	31,33%	96	79	131	21,52%	-26,72%	1.109	877	26,45%	18.058	13.783	31,02%
BUENOS AIRES-ATLANTICA	1.049	837	1.300	25,33%	-19,31%	14.849	11.424	29,98%	40	34	45	17,65%	-11,11%	500	425	17,65%	15.349	11.849	29,54%
BUENOS AIRES-LA PLATA	1.259	909	1.242	38,50%	1,37%	14.613	10.769	35,70%	22	22	32	0,00%	-31,25%	230	231	-0,43%	14.843	11.000	34,94%
BUENOS AIRES-OESTE	876	663	1.113	32,13%	-21,29%	13.039	10.274	26,91%	102	87	110	17,24%	-7,27%	1.296	1.062	22,03%	14.335	11.336	26,46%
BUENOS AIRES-CENTRO	789	546	881	44,51%	-10,44%	9.865	7.568	30,35%	61	50	62	22,00%	-1,61%	744	643	15,71%	10.609	8.211	29,20%
BUENOS AIRES-SUR	710	554	950	28,16%	-25,26%	9.932	7.631	30,15%	78	58	62	34,48%	25,81%	622	606	2,64%	10.554	8.237	28,13%



Patentamientos por Regiones de Buenos Aires

