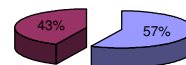




**Patentamientos por Marcas - Mercado Total**

	oct/07(a)	sep/07(b)	oct/06(c)	oct/05(d)	Var a-b	Var a-c	Var a-d	Ac. 07	Ac. 06	Var 07-06
<b>Automovil</b>	36.614	36.565	27.035	22.828	0,13%	35,43%	60,39%	378.666	298.657	26,79%
<b>Comercial Liviano</b>	9.295	8.984	6.283	5.270	3,46%	47,94%	76,38%	91.331	73.329	24,55%
<b>Comercial Pesado</b>	2.293	2.029	1.808	1.613	13,01%	26,83%	42,16%	20.628	18.015	14,50%
<b>Otros Pesados</b>	1.305	1.282	902	882	1,79%	44,68%	47,96%	12.041	9.802	22,84%
<b>Total</b>	<b>49.507</b>	<b>48.860</b>	<b>36.028</b>	<b>30.593</b>	<b>1,32%</b>	<b>37,41%</b>	<b>61,82%</b>	<b>502.666</b>	<b>399.803</b>	<b>25,73%</b>
<b>Prom. diario</b>	2.250	2.443	1.716	1.530				2.405	1.895	
<b>Dias habiles</b>	22	20	21	20				209	211	

Patentamientos por origen	
Importados	Ac. 07
Importados	29.109
Nacionales	20.398
	286.295
	216.368



■ Importados ■ Nacionales

**Patentamientos Mensuales**

	ene	feb	mar	abr	may	jun	jul	ago	sep	oct	nov	dic
2007	82.563	38.847	47.386	41.637	47.236	42.145	50.197	54.288	48.860	49.507		
2006	65.995	32.439	40.420	34.274	38.307	36.582	36.968	39.133	39.657	36.028	33.285	17.755
<b>Var% 07-06</b>	<b>25,10%</b>	<b>19,75%</b>	<b>17,23%</b>	<b>21,48%</b>	<b>23,31%</b>	<b>15,21%</b>	<b>35,79%</b>	<b>38,73%</b>	<b>23,21%</b>	<b>37,41%</b>	<b>-100,00%</b>	<b>-100,00%</b>
2005	52.466	26.364	30.600	32.961	33.471	32.593	34.187	31.927	36.152	30.593	29.397	15.983
2004												

**Patentamientos por Marcas - Totales**

Marca	oct/07(a)	Part %	oct/06(c)	Part %	sep/07(e)	Part %	Var a-c	Var a-e	ene - oct	Part %	ene - oct	Part %	2007-2006
Volkswagen	8.831	18,35%	7.067	20,15%	9.206	19,36%	24,96%	-4,07%	94.856	19,34%	78.125	20,06%	21,42%
Chevrolet	7.431	15,44%	5.698	16,25%	7.027	14,78%	30,41%	5,75%	73.458	14,98%	56.552	14,52%	29,89%
Ford	7.221	15,00%	4.960	14,14%	6.885	14,48%	45,58%	4,88%	66.588	13,58%	56.967	14,63%	16,89%
Renault	5.178	10,76%	3.508	10,00%	5.498	11,56%	47,61%	-5,82%	59.964	12,23%	43.445	11,16%	38,02%
Peugeot	4.725	9,82%	3.354	9,56%	4.502	9,47%	40,88%	4,95%	51.005	10,40%	40.049	10,28%	27,36%
Fiat	4.678	9,72%	3.757	10,71%	4.731	9,95%	24,51%	-1,12%	49.177	10,03%	38.495	9,89%	27,75%
Toyota	2.528	5,25%	1.981	5,65%	2.469	5,19%	27,61%	2,39%	25.132	5,13%	19.829	5,09%	26,74%
Citroen	2.076	4,31%	1.095	3,12%	1.818	3,82%	89,59%	14,19%	18.803	3,83%	13.057	3,35%	44,01%
Mercedes Benz	1.213	2,52%	922	2,63%	1.168	2,46%	31,56%	3,85%	11.848	2,42%	10.103	2,59%	17,27%
Honda	1.251	2,60%	514	1,47%	1.134	2,38%	143,39%	10,32%	9.600	1,96%	6.822	1,75%	40,72%
Suzuki	848	1,76%	789	2,25%	935	1,97%	7,48%	-9,30%	8.743	1,78%	9.262	2,38%	-5,60%
Iveco	335	0,70%	248	0,71%	310	0,65%	35,08%	8,06%	3.158	0,64%	2.657	0,68%	18,86%
Nissan	295	0,61%	213	0,61%	298	0,63%	38,50%	-1,01%	2.913	0,59%	2.781	0,71%	4,75%
Audi	238	0,49%	184	0,52%	243	0,51%	29,35%	-2,06%	2.515	0,51%	1.928	0,50%	30,45%
BMW	169	0,35%	119	0,34%	223	0,47%	42,02%	-24,22%	2.120	0,43%	1.587	0,41%	33,59%
Hyundai	243	0,50%	78	0,22%	206	0,43%	211,54%	17,96%	1.773	0,36%	760	0,20%	133,29%
Kia	180	0,37%	111	0,32%	164	0,34%	62,16%	9,76%	1.626	0,33%	1.018	0,26%	59,72%
Scania	167	0,35%	126	0,36%	128	0,27%	32,54%	30,47%	1.393	0,28%	1.669	0,43%	-16,54%
Mitsubishi	72	0,15%	45	0,13%	76	0,16%	60,00%	-5,26%	1.004	0,20%	797	0,20%	25,97%
Jeep	73	0,15%	36	0,10%	96	0,20%	102,78%	-23,96%	997	0,20%	610	0,16%	63,44%
Chrysler	98	0,20%	52	0,15%	110	0,23%	88,46%	-10,91%	915	0,19%	630	0,16%	45,24%
Volvo	74	0,15%	47	0,13%	64	0,13%	57,45%	15,63%	660	0,13%	396	0,10%	66,67%
Dodge	33	0,07%	28	0,08%	61	0,13%	17,86%	-45,90%	403	0,08%	337	0,09%	19,58%
Agrale	42	0,09%	56	0,16%	42	0,09%	-25,00%	0,00%	400	0,08%	334	0,09%	19,76%
Subaru	34	0,07%	14	0,04%	42	0,09%	142,86%	-19,05%	366	0,07%	209	0,05%	75,12%
Mini	34	0,07%	21	0,06%	38	0,08%	61,90%	-10,53%	347	0,07%	268	0,07%	29,48%
Land Rover	14	0,03%	25	0,07%	21	0,04%	-44,00%	-33,33%	188	0,04%	231	0,06%	-18,61%
Puma de Tat	22	0,05%	2	0,01%	21	0,04%	1000,00%	4,76%	171	0,03%	48	0,01%	256,25%
Porsche	10	0,02%	5	0,01%	14	0,03%	100,00%	-28,57%	102	0,02%	98	0,03%	4,08%
Alfa Romeo	4	0,01%		0,00%	4	0,01%	N/D	0,00%	59	0,01%	36	0,01%	63,89%
Seat	14	0,03%		0,00%	24	0,05%	N/D	-41,67%	52	0,01%	11	0,00%	372,73%
Jaguar		0,00%		0,00%	1	0,00%	N/D	-100,00%	12	0,00%	14	0,00%	-14,29%
Isuzu		0,00%	11	0,03%		0,00%	-100,00%	N/D	9	0,00%	274	0,07%	-96,72%
Hummer		0,00%	2	0,01%		0,00%	-100,00%	N/D	7	0,00%	15	0,00%	-53,33%
Ferrari	1	0,00%		0,00%		0,00%	N/D	N/D	5	0,00%		0,00%	N/D
Maserati		0,00%		0,00%		0,00%	N/D	N/D	3	0,00%		0,00%	N/D
Lexus		0,00%		0,00%		0,00%	N/D	N/D	1	0,00%	2	0,00%	-50,00%
<b>Total</b>	<b>48.132</b>		<b>35.068</b>		<b>47.559</b>				<b>490.373</b>		<b>389.416</b>		

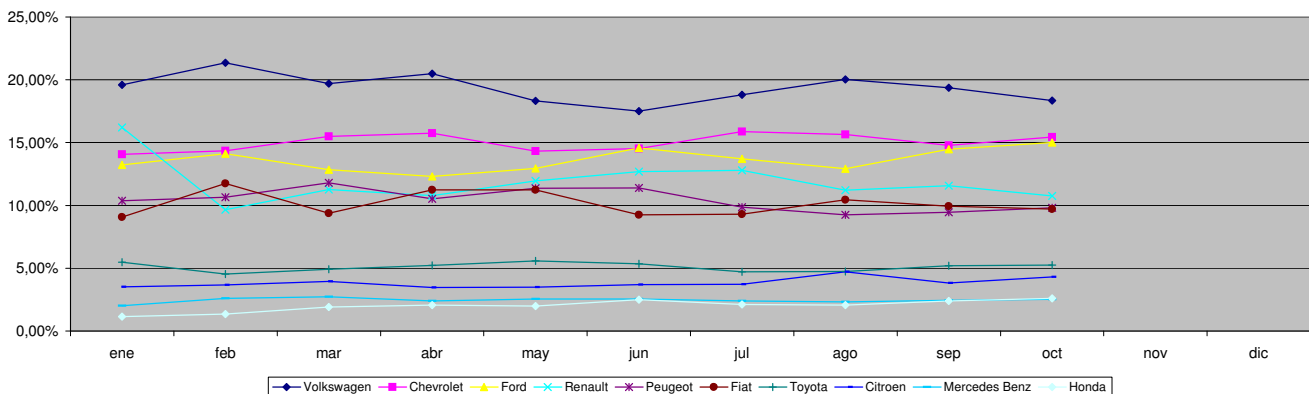


**Patentamientos por Marcas - Mercado Total**

Patentamientos por Marcas - Autos + Livianos								2007	2007	2006	2006	Var	
Marca	oct/07(a)	Part %	oct/06(c)	Part %	sep/07(e)	Part %	Var a-c	ene - oct	Part %	ene - oct	Part %	2007-2006	
Volkswagen	8.463	18,43%	6.765	20,30%	8.858	19,45%	25,10%	-4,46%	91.731	19,52%	75.689	20,35%	21,19%
Chevrolet	7.431	16,19%	5.698	17,10%	7.027	15,43%	30,41%	5,75%	73.458	15,63%	56.552	15,20%	29,89%
Ford	6.768	14,74%	4.589	13,77%	6.519	14,31%	47,48%	3,82%	62.306	13,26%	53.145	14,29%	17,24%
Renault	5.129	11,17%	3.422	10,27%	5.446	11,96%	49,88%	-5,82%	59.061	12,57%	42.920	11,54%	37,61%
Peugeot	4.725	10,29%	3.354	10,07%	4.502	9,88%	40,88%	4,95%	51.005	10,85%	40.049	10,77%	27,36%
Fiat	4.678	10,19%	3.757	11,28%	4.731	10,39%	24,51%	-1,12%	49.177	10,46%	38.495	10,35%	27,75%
Toyota	2.528	5,51%	1.981	5,95%	2.469	5,42%	27,61%	2,39%	25.132	5,35%	19.829	5,33%	26,74%
Citroen	2.076	4,52%	1.095	3,29%	1.818	3,99%	89,59%	14,19%	18.803	4,00%	13.057	3,51%	44,01%
Honda	1.251	2,72%	514	1,54%	1.134	2,49%	143,39%	10,32%	9.600	2,04%	6.822	1,83%	40,72%
Suzuki	848	1,85%	789	2,37%	935	2,05%	7,48%	-9,30%	8.743	1,86%	9.262	2,49%	-5,60%
Mercedes Benz	390	0,85%	321	0,96%	364	0,80%	21,50%	7,14%	4.263	0,91%	3.453	0,93%	23,46%
Nissan	295	0,64%	213	0,64%	298	0,65%	38,50%	-1,01%	2.913	0,62%	2.781	0,75%	4,75%
Audi	238	0,52%	184	0,55%	243	0,53%	29,35%	-2,06%	2.515	0,54%	1.928	0,52%	30,45%
BMW	169	0,37%	119	0,36%	223	0,49%	42,02%	-24,22%	2.120	0,45%	1.587	0,43%	33,59%
Hyundai	242	0,53%	47	0,14%	205	0,45%	414,89%	18,05%	1.601	0,34%	495	0,13%	223,43%
Kia	180	0,39%	97	0,29%	164	0,36%	85,57%	9,76%	1.560	0,33%	928	0,25%	68,10%
Iveco	75	0,16%	123	0,37%	90	0,20%	-39,02%	-16,67%	1.192	0,25%	1.323	0,36%	-9,90%
Mitsubishi	72	0,16%	45	0,14%	76	0,17%	60,00%	-5,26%	1.004	0,21%	797	0,21%	25,97%
Jeep	73	0,16%	36	0,11%	96	0,21%	102,78%	-23,96%	997	0,21%	610	0,16%	63,44%
Chrysler	98	0,21%	52	0,16%	110	0,24%	88,46%	-10,91%	915	0,19%	630	0,17%	45,24%
Dodge	33	0,07%	28	0,08%	61	0,13%	17,86%	-45,90%	403	0,09%	337	0,09%	19,58%
Subaru	34	0,07%	14	0,04%	42	0,09%	142,86%	-19,05%	366	0,08%	209	0,06%	75,12%
Volvo	38	0,08%	20	0,06%	34	0,07%	90,00%	11,76%	360	0,08%	158	0,04%	127,85%
Mini	34	0,07%	21	0,06%	38	0,08%	61,90%	-10,53%	347	0,07%	268	0,07%	29,48%
Land Rover	12	0,03%	15	0,05%	21	0,05%	-20,00%	-42,86%	171	0,04%	193	0,05%	-11,40%
Porsche	10	0,02%	5	0,02%	14	0,03%	100,00%	-28,57%	102	0,02%	98	0,03%	4,08%
Alfa Romeo	4	0,01%		0,00%	4	0,01%	N/D	0,00%	59	0,01%	36	0,01%	63,89%
Seat	14	0,03%		0,00%	24	0,05%	N/D	-41,67%	52	0,01%	11	0,00%	372,73%
Jaguar		0,00%		0,00%	1	0,00%	N/D	-100,00%	12	0,00%	14	0,00%	-14,29%
Isuzu		0,00%	11	0,03%		0,00%	-100,00%	N/D	9	0,00%	274	0,07%	-96,72%
Hummer		0,00%	2	0,01%		0,00%	-100,00%	N/D	7	0,00%	15	0,00%	-53,33%
Ferrari	1	0,00%		0,00%		0,00%	N/D	N/D	5	0,00%		0,00%	N/D
Maserati		0,00%		0,00%		0,00%	N/D	N/D	3	0,00%		0,00%	N/D
Agrale		0,00%	1	0,00%	1	0,00%	-100,00%	-100,00%	2	0,00%	4	0,00%	-50,00%
Lexus		0,00%		0,00%		0,00%	N/D	N/D	1	0,00%	2	0,00%	-50,00%
<b>Total</b>	<b>45.909</b>		<b>33.318</b>		<b>45.548</b>				<b>469.995</b>		<b>371.971</b>		

Patentamientos por Marcas - Camiones + Buses								2007	2007	2006	2006	Var	
Marca	oct/07(a)	Part %	oct/06(c)	Part %	sep/07(e)	Part %	Var a-c	ene - oct	Part %	ene - oct	Part %	2007-2006	
Mercedes Benz	823	37,02%	601	34,34%	804	39,98%	36,94%	2,36%	7.585	37,22%	6.650	38,12%	14,06%
Ford	453	20,38%	371	21,20%	366	18,20%	22,10%	23,77%	4.282	21,01%	3.822	21,91%	12,04%
Volkswagen	368	16,55%	302	17,26%	348	17,30%	21,85%	5,75%	3.125	15,34%	2.436	13,96%	28,28%
Iveco	260	11,70%	125	7,14%	220	10,94%	108,00%	18,18%	1.966	9,65%	1.334	7,65%	47,38%
Scania	167	7,51%	126	7,20%	128	6,36%	32,54%	30,47%	1.393	6,84%	1.669	9,57%	-16,54%
Renault	49	2,20%	86	4,91%	52	2,59%	-43,02%	-5,77%	903	4,43%	525	3,01%	72,00%
Agrale	42	1,89%	55	3,14%	41	2,04%	-23,64%	2,44%	398	1,95%	330	1,89%	20,61%
Volvo	36	1,62%	27	1,54%	30	1,49%	33,33%	20,00%	300	1,47%	238	1,36%	26,05%
Hyundai	1	0,04%	31	1,77%	1	0,05%	-96,77%	0,00%	172	0,84%	265	1,52%	-35,09%
Puma de Tat	22	0,99%	2	0,11%	21	1,04%	1000,00%	4,76%	171	0,84%	48	0,28%	256,25%
Kia		0,00%	14	0,80%		0,00%	-100,00%	N/D	66	0,32%	90	0,52%	-26,67%
Land Rover	2	0,09%	10	0,57%		0,00%	-80,00%	N/D	17	0,08%	38	0,22%	-55,26%
<b>Total</b>	<b>2.223</b>		<b>1.750</b>		<b>2.011</b>				<b>20.378</b>		<b>17.445</b>		

**Participacion por Marcas - Evolucion Mensual**

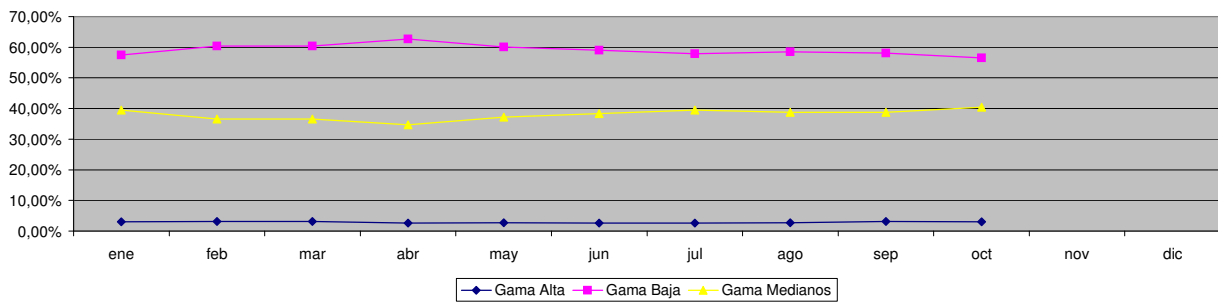




**Patentamientos por Ranking de Automoviles - Mercado Total**

Rank	Modelo	Ranking Por Modelos - Automoviles									
		oct/07 (a)	oct/06 (b)	sep/07 (c)	Var a-b	Var a-c	Ac. 07	Part %	Ac. 06	Part %	Var 07-06
1	Volkswagen GOL	3.006	2.862	3.198	5,03%	-6,00%	36.012	9,73%	32.060	10,96%	12,33%
2	Chevrolet CORSA	2.934	2.269	2.901	29,31%	1,14%	30.221	8,16%	21.023	7,19%	43,75%
3	Peugeot 206	2.238	1.640	1.966	36,46%	13,84%	24.268	6,56%	19.398	6,63%	25,11%
4	Renault CLIO	1.424	1.332	1.684	6,91%	-15,44%	19.003	5,13%	17.942	6,13%	5,91%
5	Ford FIESTA	1.692	1.067	1.569	58,58%	7,84%	14.910	4,03%	13.911	4,76%	7,18%
6	Peugeot 307	1.402	810	1.369	73,09%	2,41%	14.613	3,95%	10.095	3,45%	44,75%
7	Ford ECOSPORT	1.579	1.405	1.667	12,38%	-5,28%	14.241	3,85%	14.322	4,90%	-0,57%
8	Volkswagen SURAN	1.270	691	1.418	83,79%	-10,44%	13.466	3,64%	3.856	1,32%	249,22%
9	Fiat PALIO	1.035	932	1.095	11,05%	-5,48%	12.512	3,38%	10.306	3,52%	21,41%
10	Volkswagen FOX/CROSSFOX	1.100	870	1.416	26,44%	-22,32%	12.094	3,27%	9.580	3,27%	26,24%
11	Renault MEGANE	531	838	798	-36,63%	-33,46%	11.579	3,13%	8.579	2,93%	34,97%
12	Fiat UNO	888	766	1.099	15,93%	-19,20%	10.051	2,72%	8.108	2,77%	23,96%
13	Ford FOCUS	910	594	781	53,20%	16,52%	8.714	2,35%	5.972	2,04%	45,91%
14	Fiat SIENA	685	720	742	-4,86%	-7,68%	8.691	2,35%	6.832	2,34%	27,21%
15	Ford KA	992	428	1.023	131,78%	-3,03%	8.593	2,32%	5.419	1,85%	58,57%
16	Chevrolet ASTRA	818	573	686	42,76%	19,24%	8.556	2,31%	6.017	2,06%	42,20%
17	Chevrolet CORSA II	938	697	823	34,58%	19,97%	8.317	2,25%	6.595	2,25%	26,11%
18	Chevrolet MERIVA	790	729	716	8,37%	10,34%	8.189	2,21%	7.199	2,46%	13,75%
19	Volkswagen BORA	1.032	516	477	100,00%	116,35%	8.046	2,17%	7.370	2,52%	9,17%
20	Suzuki FUN	711	759	805	-6,32%	-11,68%	7.834	2,12%	8.547	2,92%	-8,34%
21	Citroen C3	435	465	534	-6,45%	-18,54%	7.048	1,90%	6.190	2,12%	13,86%
22	Toyota COROLLA	590	489	642	20,65%	-8,10%	6.200	1,67%	5.267	1,80%	17,71%
23	Renault MEGANE II	628	121	636	419,01%	-1,26%	6.062	1,64%	2.031	0,69%	198,47%
24	Renault KANGOO	607	321	617	89,10%	-1,62%	5.457	1,47%	3.656	1,25%	49,26%
25	Fiat PALIO WEEKEND	539	491	505	9,78%	6,73%	5.285	1,43%	3.927	1,34%	34,58%
26	Chevrolet CORSA SW	512	420	418	21,90%	22,49%	5.094	1,38%	3.987	1,36%	27,77%
27	Volkswagen GOL COUNTRY	397	471	641	-15,71%	-38,07%	4.926	1,33%	6.016	2,06%	-18,12%
28	Volkswagen POLO	440	460	430	-4,35%	2,33%	4.594	1,24%	6.533	2,23%	-29,68%
29	Fiat IDEA	405	252	465	60,71%	-12,90%	4.558	1,23%	2.418	0,83%	88,50%
30	Volkswagen VENTO	405	262	458	54,58%	-11,57%	4.417	1,19%	2.201	0,75%	100,68%
31	Honda FIT	578	261	544	121,46%	6,25%	4.246	1,15%	3.514	1,20%	20,83%
32	Peugeot PARTNER	326	223	319	46,19%	2,19%	3.246	0,88%	2.598	0,89%	24,94%
33	Honda CIVIC	363	142	263	155,63%	38,02%	2.900	0,78%	1.660	0,57%	74,70%
34	Citroen BERLINGO	246	182	235	35,16%	4,68%	2.799	0,76%	2.008	0,69%	39,39%
35	Citroen C4	879		569	N/D	54,48%	2.734	0,74%		0,00%	N/D
36	Renault SCENIC	168	212	214	-20,75%	-21,50%	2.640	0,71%	2.922	1,00%	-9,65%
37	Chevrolet VECTRA	309	211	378	46,45%	-18,25%	2.498	0,67%	375	0,13%	566,13%
38	Citroen PICASSO	193	207	130	-6,76%	48,46%	2.425	0,66%	2.433	0,83%	-0,33%
39	Chevrolet ZAFIRA	172	147	154	17,01%	11,69%	1.575	0,43%	1.448	0,49%	8,77%
40	Renault LOGAN	197		150	N/D	31,33%	1.473	0,40%		0,00%	N/D
41	Volkswagen GOLF	143	160	127	-10,63%	12,60%	1.458	0,39%	2.953	1,01%	-50,63%
42	Audi A3	107	85	95	25,88%	12,63%	1.192	0,32%	911	0,31%	30,85%
43	Volkswagen PASSAT	134	82	105	63,41%	27,62%	1.165	0,31%	1.118	0,38%	4,20%
44	BMW 300 SERIES	75	61	128	22,95%	-41,41%	1.078	0,29%	756	0,26%	42,59%
45	Audi A4	85	87	109	-2,30%	-22,02%	975	0,26%	818	0,28%	19,19%
46	Peugeot 206 SW	75	124	88	-39,52%	-14,77%	934	0,25%	1.960	0,67%	-52,35%
47	Toyota COROLLA FIELDER	76	82	90	-7,32%	-15,56%	896	0,24%	794	0,27%	12,85%
48	Mercedes Benz CLASE C	84	29	83	189,66%	1,20%	836	0,23%	476	0,16%	75,63%
49	Renault MEGANE II GRAND TOUR	136		122	N/D	11,48%	802	0,22%		0,00%	N/D
50	Chrysler PT CRUISER	83	36	99	130,56%	-16,16%	746	0,20%	447	0,15%	66,89%
<b>Total</b>		<b>35.362</b>	<b>26.581</b>	<b>35.581</b>			<b>370.169</b>	<b>1</b>	<b>292.548</b>		

**Autos - Participacion por Segmento**





**Patentamientos por Ranking de Livianos y Pesados - Mercado Total**

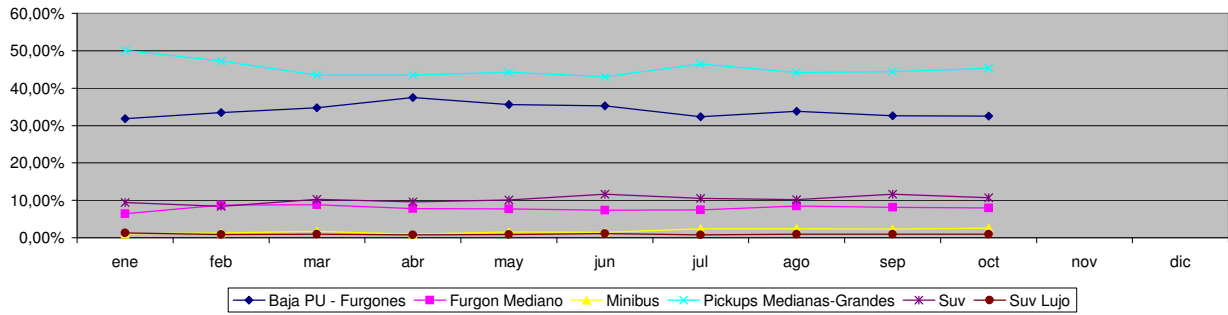
Comercial Liviano											
Rank.	Modelo	oct/07 (a)	oct/06 (b)	sep/07 (c)	Var a-b	Var a-c	Ac. 07	Part %	Ac. 06	Part %	Var 07-06
1	Toyota HILUX	1.556	1.245	1.416	24,98%	9,89%	15.145	18,45%	11.760	17,79%	28,78%
2	Ford RANGER	1.201	856	1.137	40,30%	5,63%	12.431	15,14%	10.742	16,25%	15,72%
3	Renault KANGOO FURGON	1.091	450	872	142,44%	25,11%	9.629	11,73%	6.294	9,52%	52,99%
4	Chevrolet S-10	906	600	908	51,00%	-0,22%	8.521	10,38%	9.343	14,14%	-8,80%
5	Peugeot PARTNER FURGON	534	410	546	30,24%	-2,20%	6.201	7,55%	4.138	6,26%	49,86%
6	Fiat FIORINO	430	294	430	46,26%	0,00%	4.146	5,05%	3.366	5,09%	23,17%
7	Volkswagen SAVEIRO	375	256	434	46,48%	-13,59%	3.905	4,76%	2.446	3,70%	59,65%
8	Citroen BERLINGO FURGON	297	210	341	41,43%	-12,90%	3.429	4,18%	2.201	3,33%	55,79%
9	Mercedes Benz SPRINTER	239	219	199	9,13%	20,10%	2.600	3,17%	2.412	3,65%	7,79%
10	Ford F 100	238	165	238	44,24%	0,00%	2.521	3,07%	1.735	2,62%	45,30%
11	Renault MASTER	314	133	312	136,09%	0,64%	2.108	2,57%	1.469	2,22%	43,50%
12	Toyota HILUX SW4	182	120	194	51,67%	-6,19%	2.004	2,44%	1.677	2,54%	19,50%
13	Honda CRV	266	79	286	236,71%	-6,99%	1.872	2,28%	1.130	1,71%	65,66%
14	Nissan FRONTIER	221	126	180	75,40%	22,78%	1.845	2,25%	1.826	2,76%	1,04%
15	Fiat STRADA	99	84	110	17,86%	-10,00%	1.272	1,55%	1.006	1,52%	26,44%
16	Iveco DAILY	75	123	90	-39,02%	-16,67%	1.192	1,45%	1.323	2,00%	-9,90%
17	Fiat UNO	96	77	93	24,68%	3,23%	950	1,16%	825	1,25%	15,15%
18	Volkswagen CADDY	51	97	61	-47,42%	-16,39%	864	1,05%	909	1,38%	-4,95%
19	Fiat DUCATO	88	74	79	18,92%	11,39%	766	0,93%	934	1,41%	-17,99%
20	Mitsubishi L200	54	32	49	68,75%	10,20%	703	0,86%	560	0,85%	25,54%
<b>Total</b>		<b>8.313</b>	<b>5.650</b>	<b>7.975</b>			<b>82.104</b>	<b>1</b>	<b>66.096</b>		

Comercial Pesado											
Rank.	Modelo	oct/07 (a)	oct/06 (b)	sep/07 (c)	Var a-b	Var a-c	Ac. 07	Part %	Ac. 06	Part %	Var 07-06
1	Mercedes Benz LS 1634	123	127	102	-3,15%	20,59%	1.456	11,04%	1.337	15,01%	8,90%
2	Mercedes Benz OF 1418	130		127	N/D	2,36%	1.044	7,92%		0,00%	N/D
3	Mercedes Benz L-1624	153		131	N/D	16,79%	1.008	7,64%		0,00%	N/D
4	Volkswagen 17220	104	87	113	19,54%	-7,96%	957	7,26%	701	7,87%	36,52%
5	Ford CARGO 1722	8	95	10	-91,58%	-20,00%	946	7,17%	1.069	12,00%	-11,51%
6	Iveco 450 E	87	58	90	50,00%	-3,33%	792	6,01%	328	3,68%	141,46%
7	Iveco 170 E	121	31	83	290,32%	45,78%	693	5,25%	454	5,10%	52,64%
8	Ford F-4000	72	50	64	44,00%	12,50%	688	5,22%	529	5,94%	30,06%
9	Mercedes Benz L-1620	12	111	11	-89,19%	9,09%	660	5,00%	1.190	13,36%	-44,54%
10	Mercedes Benz L1634	60	54	59	11,11%	1,69%	657	4,98%	606	6,80%	8,42%
11	Volkswagen 13180	68	72	77	-5,56%	-11,69%	616	4,67%	546	6,13%	12,82%
12	Ford CARGO 1722 E	125		90	N/D	38,89%	560	4,25%		0,00%	N/D
13	Mercedes Benz 1315	52	7	73	642,86%	-28,77%	508	3,85%	608	6,83%	-16,45%
14	Mercedes Benz 710	51	49	48	4,08%	6,25%	492	3,73%	377	4,23%	30,50%
15	Volkswagen 17310	12	39	12	-69,23%	0,00%	483	3,66%	440	4,94%	9,77%
16	Ford CARGO 1730	8	33	11	-75,76%	-27,27%	353	2,68%	180	2,02%	96,11%
17	Scania R340	52		40	N/D	30,00%	351	2,66%		0,00%	N/D
18	Ford CARGO 1832 E	77		48	N/D	60,42%	330	2,50%		0,00%	N/D
19	Renault PREMIUM	31	36	33	-13,89%	-6,06%	322	2,44%	275	3,09%	17,09%
20	Scania P94	19	9	28	111,11%	-32,14%	272	2,06%	266	2,99%	2,26%
<b>Total</b>		<b>1.365</b>	<b>858</b>	<b>1.250</b>			<b>13.188</b>	<b>1</b>	<b>8.906</b>		

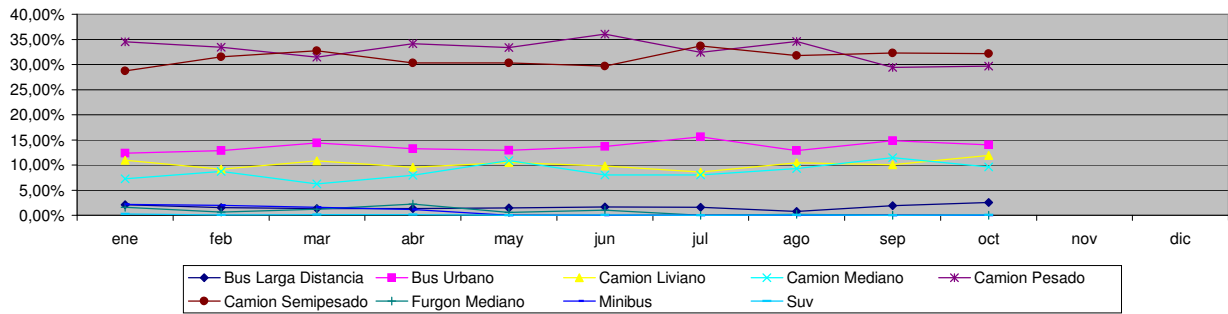


**Patentamientos por Ranking de Livianos y Pesados - Mercado Total**

**Comercial Liviano**



**Comercial Pesado**



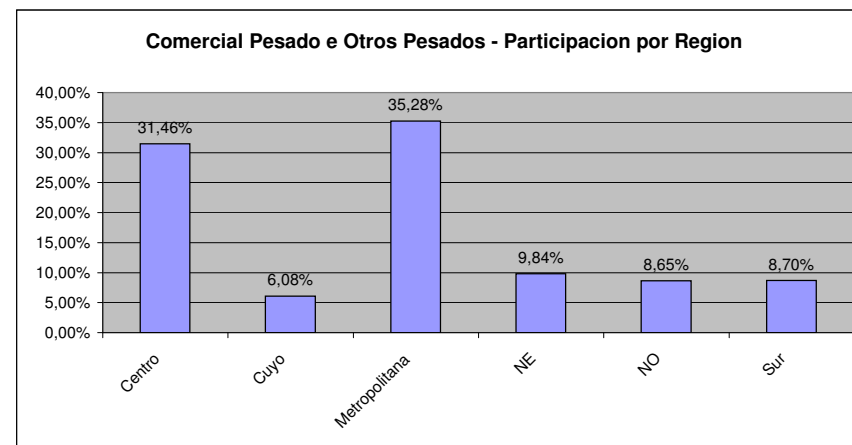
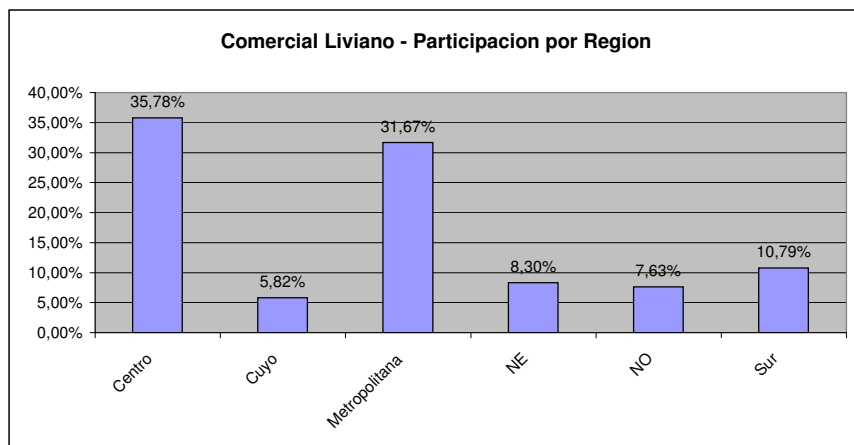
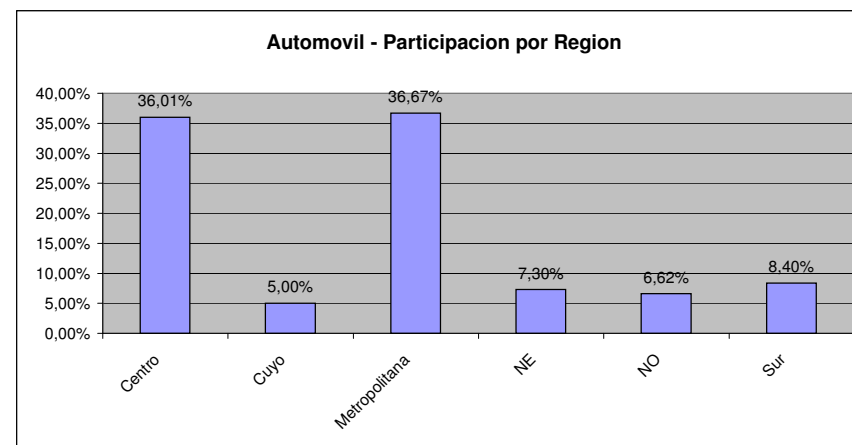
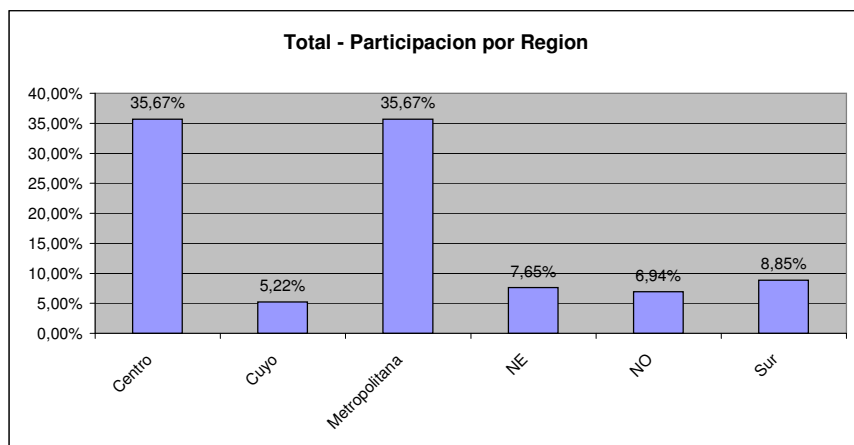


**Patentamientos por Provincias y Tipos -**

Distrito	Automovil+Comercial Liviano							Comercial Pesado+Otros Pesados							Mercado Total					
	oct/07 (a)	oct/06 (b)	sep/07 (c)	Var a-b	Var a-c	Ac. 07	Ac. 06	Var 07-06	oct/07 (a)	oct/06 (b)	sep/07 (c)	Var a-b	Var a-c	Ac. 07	Ac. 06	Var 07-06	Ac. 07	Ac. 06	Var 07-06	Part %
CAPITAL FEDERAL	9.508	7.636	9.041	24,52%	5,17%	92.377	79.303	16,49%	917	631	861	45,32%	6,50%	8.389	6.473	29,60%	100.766	85.776	17,48%	20,05%
GRAN BUENOS AIRES	7.284	5.645	7.041	29,03%	3,45%	75.411	58.180	29,62%	325	232	313	40,09%	3,83%	3.135	2.365	32,56%	78.546	60.545	29,73%	15,63%
BUENOS AIRES	7.079	4.827	6.987	46,65%	1,32%	73.264	56.102	30,59%	442	320	440	38,13%	0,45%	4.134	3.555	16,29%	77.398	59.657	29,74%	15,40%
CORDOBA	4.648	3.162	4.733	47,00%	-1,80%	47.094	39.204	20,13%	349	174	288	100,57%	21,18%	2.819	2.423	16,34%	49.913	41.627	19,91%	9,93%
SANTA FE	4.404	3.010	4.455	46,31%	-1,14%	43.375	34.243	26,67%	384	317	389	21,14%	-1,29%	3.056	2.784	9,77%	46.431	37.027	25,40%	9,24%
MENDOZA	1.582	964	1.700	64,11%	-6,94%	16.672	12.019	38,71%	183	122	145	50,00%	26,21%	1.501	1.543	-2,72%	18.173	13.562	34,00%	3,62%
ENTRE RIOS	979	749	1.014	30,71%	-3,45%	11.171	8.267	35,13%	90	88	110	2,27%	-18,18%	964	871	10,68%	12.135	9.138	32,80%	2,41%
CHUBUT	1.006	865	1.037	16,30%	-2,99%	11.015	9.167	20,16%	96	122	86	-21,31%	11,63%	922	917	0,55%	11.937	10.084	18,38%	2,37%
NEUQUEN	943	749	1.025	25,90%	-8,00%	10.256	8.514	20,46%	84	94	78	-10,64%	7,69%	763	797	-4,27%	11.019	9.311	18,34%	2,19%
SALTA	823	525	892	56,76%	-7,74%	9.119	6.223	46,54%	94	62	94	51,61%	0,00%	912	656	39,02%	10.031	6.879	45,82%	2,00%
TUCUMAN	837	564	783	48,40%	6,90%	9.097	6.210	46,49%	71	45	38	57,78%	86,84%	654	482	35,68%	9.751	6.692	45,71%	1,94%
CORRIENTES	682	467	619	46,04%	10,18%	7.638	5.655	35,07%	87	92	89	-5,43%	-2,25%	952	739	28,82%	8.590	6.394	34,34%	1,71%
RIO NEGRO	777	560	776	38,75%	0,13%	7.601	5.770	31,73%	24	25	22	-4,00%	9,09%	253	255	-0,78%	7.854	6.025	30,36%	1,56%
CHACO	585	427	602	37,00%	-2,82%	6.912	5.449	26,85%	82	68	69	20,59%	18,84%	724	530	36,60%	7.636	5.979	27,71%	1,52%
SANTA CRUZ	717	533	649	34,52%	10,48%	6.958	5.092	36,65%	57	57	49	0,00%	16,33%	563	544	3,49%	7.521	5.636	33,45%	1,50%
MISIONES	640	338	629	89,35%	1,75%	6.543	5.199	25,85%	48	45	25	6,67%	92,00%	352	522	-32,57%	6.895	5.721	20,52%	1,37%
TIERRA DEL FUEGO	714	609	685	17,24%	4,23%	5.822	4.816	20,89%	35	46	14	-23,91%	150,00%	341	342	-0,29%	6.163	5.158	19,48%	1,23%
LA PAMPA	495	321	501	54,21%	-1,20%	5.295	4.130	28,21%	33	18	30	83,33%	10,00%	268	189	41,80%	5.563	4.319	28,80%	1,11%
JUJUY	391	202	425	93,56%	-8,00%	4.556	3.424	33,06%	87	61	80	42,62%	8,75%	836	800	4,50%	5.392	4.224	27,65%	1,07%
SAN JUAN	429	258	440	66,28%	-2,50%	4.294	3.279	30,95%	31	35	24	-11,43%	29,17%	331	292	13,36%	4.625	3.571	29,52%	0,92%
SANTIAGO DEL ESTERO	282	191	408	47,64%	-30,88%	4.049	2.755	46,97%	19	17	28	11,76%	-32,14%	278	251	10,76%	4.327	3.006	43,95%	0,86%
SAN LUIS	308	217	297	41,94%	3,70%	3.284	2.598	26,40%	16	11	15	45,45%	6,67%	155	163	-4,91%	3.439	2.761	24,56%	0,68%
FORMOSA	296	167	265	77,25%	11,70%	2.970	2.367	25,48%	25	9	12	177,78%	108,33%	221	100	121,00%	3.191	2.467	29,35%	0,63%
CATAMARCA	293	179	344	63,69%	-14,83%	3.022	2.203	37,18%	12	8	6	50,00%	100,00%	85	102	-16,67%	3.107	2.305	34,79%	0,62%
LA RIOJA	207	153	201	35,29%	2,99%	2.202	1.817	21,19%	7	11	6	-36,36%	16,67%	61	122	-50,00%	2.263	1.939	16,71%	0,45%



### Patentamientos por Provincias y Tipos -





**Patentamientos por Regiones de Buenos Aires**

Subregion	Automovil+Comercial Liviano								Comercial Pesado+Otros Pesados								Mercado Total		
	oct/07 (a)	oct/06 (b)	sep/07 (c)	Var a-b	Var a-c	Ac. 07	Ac. 06	Var 07-06	oct/07 (a)	oct/06 (b)	sep/07 (c)	Var a-b	Var a-c	Ac. 07	Ac. 06	Var 07-06	Ac. 07	Ac. 06	Var 07-06
GRAN BUENOS AIRES-OESTE	2.843	2.184	2.849	30,17%	-0,21%	30.121	22.638	33,06%	153	96	142	59,38%	7,75%	1.339	1.043	28,38%	31.460	23.681	32,85%
GRAN BUENOS AIRES-SUR	2.651	2.035	2.491	30,27%	6,42%	26.983	20.552	31,29%	112	96	132	16,67%	-15,15%	1.274	913	39,54%	28.257	21.465	31,64%
GRAN BUENOS AIRES-NORTE	1.790	1.426	1.701	25,53%	5,23%	18.307	14.990	22,13%	60	40	39	50,00%	53,85%	522	409	27,63%	18.829	15.399	22,27%
BUENOS AIRES-NORTE	1.558	1.014	1.473	53,65%	5,77%	15.315	11.724	30,63%	130	60	124	116,67%	4,84%	1.014	800	26,75%	16.329	12.524	30,38%
BUENOS AIRES-ATLANTICA	1.300	894	1.249	45,41%	4,08%	13.800	10.581	30,42%	45	29	43	55,17%	4,65%	460	397	15,87%	14.260	10.978	29,90%
BUENOS AIRES-OESTE	1.148	776	1.205	47,94%	-4,73%	12.510	9.851	26,99%	111	96	123	15,63%	-9,76%	1.212	994	21,93%	13.722	10.845	26,53%
BUENOS AIRES-LA PLATA	1.242	920	1.252	35,00%	-0,80%	13.350	9.855	35,46%	32	11	25	190,91%	28,00%	212	214	-0,93%	13.562	10.069	34,69%
BUENOS AIRES-SUR	950	625	920	52,00%	3,26%	9.217	7.074	30,29%	62	65	57	-4,62%	8,77%	549	552	-0,54%	9.766	7.626	28,06%
BUENOS AIRES-CENTRO	881	598	888	47,32%	-0,79%	9.072	7.017	29,29%	62	59	68	5,08%	-8,82%	687	598	14,88%	9.759	7.615	28,15%



### Patentamientos por Regiones de Buenos Aires

