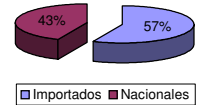




Patentamientos por Marcas - Mercado Total

	sep/07(a)	ago/07(b)	sep/06(c)	sep/05(d)	Var a-b	Var a-c	Var a-d	Ac. 07	Ac. 06	Var 07-06
Automovil	36.563	40.993	29.357	26.962	-10,81%	24,55%	35,61%	342.214	271.915	25,85%
Comercial Liviano	8.984	9.670	7.035	6.691	-7,09%	27,70%	34,27%	81.964	66.830	22,65%
Comercial Pesado	2.029	2.343	2.255	1.668	-13,40%	-10,02%	21,64%	18.243	16.132	13,09%
Otros Pesados	1.282	1.282	1.010	831	0,00%	26,93%	54,27%	10.735	8.900	20,62%
Total	48.858	54.288	39.657	36.152	-10,00%	23,20%	35,15%	453.156	363.777	24,57%
Prom. diario	2.443	2.468	1.888	1.643				2.423	1.915	
Dias habiles	20	22	21	22				187	190	

Patentamientos por origen		
	Sep-07	Ac. 07
Importados	29.156	257.186
Nacionales	19.702	195.970



Patentamientos Mensuales

	ene	feb	mar	abr	may	jun	jul	ago	sep	oct	nov	dic
2007	82.563	38.847	47.386	41.637	47.236	42.145	50.197	54.288	48.858			
2006	65.995	32.440	40.420	34.274	38.307	36.583	36.968	39.133	39.657	36.028	33.285	17.756
Var% 07-06	25,10%	19,75%	17,23%	21,48%	23,31%	15,20%	35,79%	38,73%	23,20%	-100,00%	-100,00%	-100,00%
2005	52.466	26.364	30.601	32.961	33.471	32.594	34.187	31.927	36.152	30.593	29.397	15.983
2004												

Patentamientos por Marcas - Totales

Marca	2007		2006		2007		2006		ene - sep	Part %	ene - sep	Part %	Var
	sep/07(a)	Part %	sep/06(c)	Part %	ago/07(e)	Part %	Var a-c	Var a-e					
Volkswagen	9.206	19,36%	7.690	19,92%	10.614	20,04%	19,71%	-13,27%	86.025	19,45%	71.058	20,05%	21,06%
Chevrolet	7.026	14,77%	5.455	14,13%	8.292	15,66%	28,80%	-15,27%	66.026	14,93%	50.854	14,35%	29,83%
Ford	6.884	14,48%	5.616	14,54%	6.843	12,92%	22,58%	0,60%	59.366	13,42%	52.007	14,68%	14,15%
Renault	5.498	11,56%	4.479	11,60%	5.940	11,22%	22,75%	-7,44%	54.786	12,39%	39.937	11,27%	37,18%
Peugeot	4.502	9,47%	3.873	10,03%	4.896	9,24%	16,24%	-8,05%	46.280	10,46%	36.695	10,36%	26,12%
Fiat	4.731	9,95%	3.849	9,97%	5.532	10,44%	22,92%	-14,48%	44.499	10,06%	34.738	9,80%	28,10%
Toyota	2.469	5,19%	2.107	5,46%	2.514	4,75%	17,18%	-1,79%	22.604	5,11%	17.848	5,04%	26,65%
Citroen	1.818	3,82%	1.255	3,25%	2.499	4,72%	44,86%	-27,25%	16.727	3,78%	11.962	3,38%	39,83%
Mercedes Benz	1.168	2,46%	1.331	3,45%	1.235	2,33%	-12,25%	-5,43%	10.635	2,40%	9.181	2,59%	15,84%
Honda	1.134	2,38%	459	1,19%	1.092	2,06%	147,06%	3,85%	8.349	1,89%	6.308	1,78%	32,36%
Suzuki	935	1,97%	926	2,40%	1.117	2,11%	0,97%	-16,29%	7.895	1,79%	8.473	2,39%	-6,82%
Iveco	310	0,65%	246	0,64%	357	0,67%	26,02%	-13,17%	2.823	0,64%	2.409	0,68%	17,19%
Nissan	298	0,63%	304	0,79%	348	0,66%	-1,97%	-14,37%	2.618	0,59%	2.568	0,72%	1,95%
Audi	243	0,51%	134	0,35%	267	0,50%	81,34%	-8,99%	2.277	0,51%	1.744	0,49%	30,56%
BMW	223	0,47%	119	0,31%	168	0,32%	87,39%	32,74%	1.951	0,44%	1.468	0,41%	32,90%
Hyundai	206	0,43%	103	0,27%	212	0,40%	100,00%	-2,83%	1.530	0,35%	682	0,19%	124,34%
Kia	164	0,34%	90	0,23%	203	0,38%	82,22%	-19,21%	1.446	0,33%	907	0,26%	59,43%
Scania	128	0,27%	159	0,41%	161	0,30%	-19,50%	-20,50%	1.226	0,28%	1.543	0,44%	-20,54%
Mitsubishi	76	0,16%	72	0,19%	108	0,20%	5,56%	-29,63%	932	0,21%	752	0,21%	23,94%
Jeep	96	0,20%	51	0,13%	111	0,21%	88,24%	-13,51%	924	0,21%	574	0,16%	60,98%
Chrysler	110	0,23%	56	0,15%	84	0,16%	96,43%	30,95%	817	0,18%	578	0,16%	41,35%
Volvo	64	0,13%	39	0,10%	111	0,21%	64,10%	-42,34%	586	0,13%	349	0,10%	67,91%
Dodge	61	0,13%	26	0,07%	46	0,09%	134,62%	32,61%	370	0,08%	309	0,09%	19,74%
Agrale	42	0,09%	67	0,17%	57	0,11%	-37,31%	-26,32%	358	0,08%	278	0,08%	28,78%
Subaru	42	0,09%	30	0,08%	42	0,08%	40,00%	0,00%	332	0,08%	195	0,06%	70,26%
Mini	38	0,08%	24	0,06%	37	0,07%	58,33%	2,70%	313	0,07%	247	0,07%	26,72%
Land Rover	21	0,04%	12	0,03%	33	0,06%	75,00%	-36,36%	174	0,04%	206	0,06%	-15,53%
Puma de Tat	21	0,04%	15	0,04%	20	0,04%	40,00%	5,00%	149	0,03%	46	0,01%	223,91%
Porsche	14	0,03%	6	0,02%	6	0,01%	133,33%	133,33%	92	0,02%	93	0,03%	-1,08%
Alfa Romeo	4	0,01%		0,00%	5	0,01%	N/D	-20,00%	55	0,01%	36	0,01%	52,78%
Seat	24	0,05%		0,00%	12	0,02%	N/D	100,00%	38	0,01%	11	0,00%	245,45%
Jaguar	1	0,00%	5	0,01%		0,00%	-80,00%	N/D	12	0,00%	14	0,00%	-14,29%
Isuzu		0,00%	11	0,03%		0,00%	-100,00%	N/D	9	0,00%	263	0,07%	-96,58%
Hummer		0,00%	3	0,01%	1	0,00%	-100,00%	-100,00%	7	0,00%	13	0,00%	-46,15%
Ferrari		0,00%		0,00%		0,00%	N/D	N/D	4	0,00%		0,00%	N/D
Maserati		0,00%		0,00%		0,00%	N/D	N/D	3	0,00%		0,00%	N/D
Lexus		0,00%		0,00%	1	0,00%	N/D	-100,00%	1	0,00%	2	0,00%	-50,00%
Total	47.557		38.612		52.964				442.239		354.348		

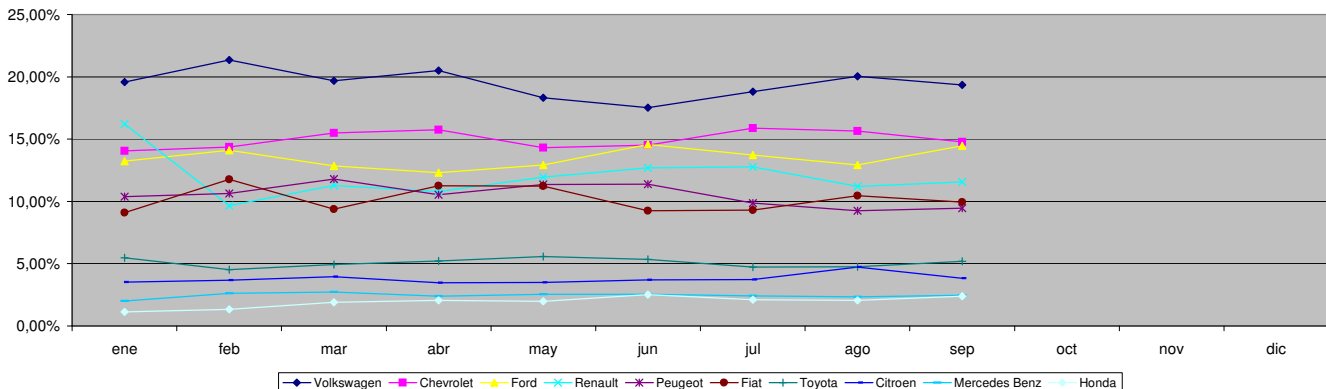


Patentamientos por Marcas - Mercado Total

Patentamientos por Marcas - Autos + Livianos								2007	2007	2006	2006	Var	
Marca	sep/07(a)	Part %	sep/06(c)	Part %	ago/07(e)	Part %	Var a-c	Var a-e	ene - sep	Part %	ene - sep	Part %	2007-2006
Volkswagen	8.858	19,45%	7.393	20,31%	10.142	20,02%	19,82%	-12,66%	83.268	19,63%	68.924	20,35%	20,81%
Chevrolet	7.026	15,43%	5.455	14,99%	8.292	16,37%	28,80%	-15,27%	66.026	15,57%	50.854	15,01%	29,83%
Ford	6.518	14,31%	5.175	14,22%	6.355	12,54%	25,95%	2,56%	55.537	13,09%	48.556	14,33%	14,38%
Renault	5.446	11,96%	4.432	12,18%	5.864	11,57%	22,88%	-7,13%	54.009	12,73%	39.547	11,68%	36,57%
Peugeot	4.502	9,88%	3.873	10,64%	4.896	9,66%	16,24%	-8,05%	46.280	10,91%	36.695	10,83%	26,12%
Fiat	4.731	10,39%	3.849	10,58%	5.532	10,92%	22,92%	-14,48%	44.499	10,49%	34.738	10,26%	28,10%
Toyota	2.469	5,42%	2.107	5,79%	2.514	4,96%	17,18%	-1,79%	22.604	5,33%	17.848	5,27%	26,65%
Citroen	1.818	3,99%	1.255	3,45%	2.499	4,93%	44,86%	-27,25%	16.727	3,94%	11.962	3,53%	39,83%
Honda	1.134	2,49%	459	1,26%	1.092	2,16%	147,06%	3,85%	8.349	1,97%	6.308	1,86%	32,36%
Suzuki	935	2,05%	926	2,54%	1.117	2,20%	0,97%	-16,29%	7.895	1,86%	8.473	2,50%	-6,82%
Mercedes Benz	364	0,80%	311	0,85%	460	0,91%	17,04%	-20,87%	3.873	0,91%	3.132	0,92%	23,66%
Nissan	298	0,65%	304	0,84%	348	0,69%	-1,97%	-14,37%	2.618	0,62%	2.568	0,76%	1,95%
Audi	243	0,53%	134	0,37%	267	0,53%	81,34%	-8,99%	2.277	0,54%	1.744	0,51%	30,56%
BMW	223	0,49%	119	0,33%	168	0,33%	87,33%	32,74%	1.951	0,46%	1.468	0,43%	32,90%
Kia	164	0,36%	86	0,24%	203	0,40%	90,70%	-19,21%	1.380	0,33%	831	0,25%	66,06%
Hyundai	205	0,45%	65	0,18%	210	0,41%	215,38%	-2,38%	1.359	0,32%	448	0,13%	203,35%
Iveco	90	0,20%	138	0,38%	155	0,31%	-34,78%	-41,94%	1.117	0,26%	1.200	0,35%	-6,92%
Mitsubishi	76	0,17%	72	0,20%	108	0,21%	5,56%	-29,63%	932	0,22%	752	0,22%	23,94%
Jeep	96	0,21%	51	0,14%	111	0,22%	88,24%	-13,51%	924	0,22%	574	0,17%	60,98%
Chrysler	110	0,24%	56	0,15%	84	0,17%	96,43%	30,95%	817	0,19%	578	0,17%	41,35%
Dodge	61	0,13%	26	0,07%	46	0,09%	134,62%	32,61%	370	0,09%	309	0,09%	19,74%
Subaru	42	0,09%	30	0,08%	42	0,08%	40,00%	0,00%	332	0,08%	195	0,06%	70,26%
Volvo	34	0,07%	15	0,04%	63	0,12%	126,67%	-46,03%	322	0,08%	138	0,04%	133,33%
Mini	38	0,08%	24	0,07%	37	0,07%	58,33%	2,70%	313	0,07%	247	0,07%	26,72%
Land Rover	21	0,05%	12	0,03%	33	0,07%	75,00%	-36,36%	174	0,04%	206	0,06%	-15,53%
Porsche	14	0,03%	6	0,02%	6	0,01%	133,33%	133,33%	92	0,02%	93	0,03%	-1,08%
Alfa Romeo	4	0,01%		0,00%	5	0,01%	N/D	-20,00%	55	0,01%	36	0,01%	52,78%
Seat	24	0,05%		0,00%	12	0,02%	N/D	100,00%	38	0,01%	11	0,00%	245,45%
Jaguar	1	0,00%	5	0,01%		0,00%	-80,00%	N/D	12	0,00%	14	0,00%	-14,29%
Isuzu		0,00%	11	0,03%		0,00%	-100,00%	N/D	9	0,00%	263	0,08%	-96,58%
Hummer		0,00%	3	0,01%	1	0,00%	-100,00%	-100,00%	7	0,00%	13	0,00%	-46,15%
Ferrari		0,00%		0,00%		0,00%	N/D	N/D	4	0,00%		0,00%	N/D
Maserati		0,00%		0,00%		0,00%	N/D	N/D	3	0,00%		0,00%	N/D
Agrale	1	0,00%		0,00%		0,00%	N/D	N/D	2	0,00%	3	0,00%	-33,33%
Lexus		0,00%		0,00%	1	0,00%	N/D	-100,00%	1	0,00%	2	0,00%	-50,00%
Total	45.546		36.392		50.663				424.176		338.730		

Patentamientos por Marcas - Camiones + Buses								2007	2007	2006	2006	Var	
Marca	sep/07(a)	Part %	sep/06(c)	Part %	ago/07(e)	Part %	Var a-c	Var a-e	ene - sep	Part %	ene - sep	Part %	2007-2006
Mercedes Benz	804	39,98%	1.020	45,95%	775	33,68%	-21,18%	3,74%	6.762	37,44%	6.049	38,73%	11,79%
Ford	366	18,20%	441	19,86%	488	21,21%	-17,01%	-25,00%	3.829	21,20%	3.451	22,10%	10,95%
Volkswagen	348	17,30%	297	13,38%	472	20,51%	17,17%	-26,27%	2.757	15,26%	2.134	13,66%	29,19%
Iveco	220	10,94%	108	4,86%	202	8,78%	103,70%	8,91%	1.706	9,44%	1.209	7,74%	41,11%
Scania	128	6,36%	159	7,16%	161	7,00%	-19,50%	-20,50%	1.226	6,79%	1.543	9,88%	-20,54%
Renault	52	2,59%	47	2,12%	76	3,30%	10,64%	-31,58%	777	4,30%	390	2,50%	99,23%
Agrale	41	2,04%	67	3,02%	57	2,48%	-38,81%	-28,07%	356	1,97%	275	1,76%	29,45%
Volvo	30	1,49%	24	1,08%	48	2,09%	25,00%	-37,50%	264	1,46%	211	1,35%	25,12%
Hyundai	1	0,05%	38	1,71%	2	0,09%	-97,37%	-50,00%	171	0,95%	234	1,50%	-26,92%
Puma de Tat	21	1,04%	15	0,68%	20	0,87%	40,00%	5,00%	149	0,82%	46	0,29%	223,91%
Kia		0,00%	4	0,18%		0,00%	-100,00%	N/D	66	0,37%	76	0,49%	-13,16%
Total	2.011		2.220		2.301				18.063		15.618		

Participacion por Marcas - Evolucion Mensual

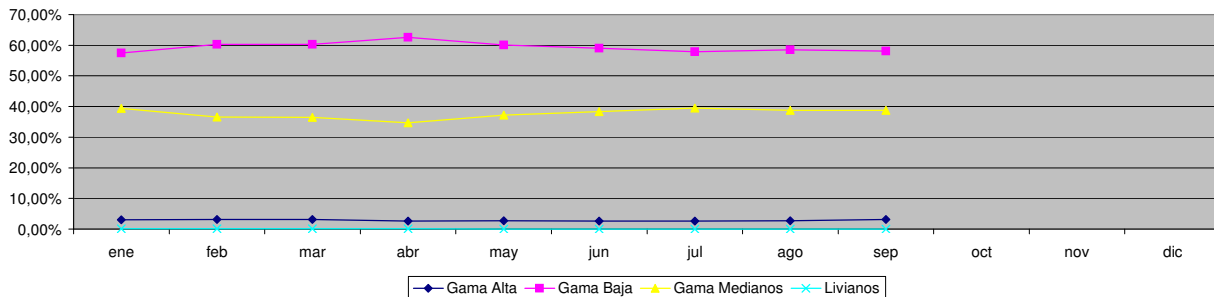




Patentamientos por Ranking de Automoviles - Mercado Total

Ranking Por Modelos - Automoviles												
Rank	Modelo	sep/07 (a)	sep/06 (b)	ago/07 (c)	Var a-b	Var a-c	Ac. 07	Part %	Ac. 06	Part %	Var 07-06	
1	Volkswagen GOL	3.198	3.126	4.221	2,30%	-24,24%	33.006	9,86%	29.198	10,98%	13,04%	
2	Chevrolet CORSA	2.900	2.160	3.387	34,26%	-14,38%	27.286	8,15%	18.754	7,05%	45,49%	
3	Peugeot 206	1.966	1.864	2.138	5,47%	-8,04%	22.030	6,58%	17.758	6,68%	24,06%	
4	Renault CLIO	1.684	1.658	1.707	1,57%	-1,35%	17.579	5,25%	16.610	6,25%	5,83%	
5	Ford FIESTA	1.569	1.174	1.634	33,65%	-3,98%	13.218	3,95%	12.844	4,83%	2,91%	
6	Peugeot 307	1.369	1.078	1.433	28,99%	-4,47%	13.211	3,95%	9.285	3,49%	42,28%	
7	Ford ECOSPORT	1.667	1.540	1.747	8,25%	-4,58%	12.662	3,78%	12.917	4,86%	-1,97%	
8	Volkswagen SURAN	1.418	775	1.398	82,97%	1,43%	12.196	3,64%	3.165	1,19%	285,34%	
9	Fiat PALIO	1.095	1.009	1.450	8,52%	-24,48%	11.477	3,43%	9.374	3,52%	22,43%	
10	Renault MEGANE	798	1.103	1.142	-27,65%	-30,12%	11.048	3,30%	7.741	2,91%	42,72%	
11	Volkswagen FOX/CROSSFOX	1.416	787	1.448	79,92%	-2,21%	10.994	3,28%	8.710	3,27%	26,22%	
12	Fiat UNO	1.099	846	1.313	29,91%	-16,30%	9.163	2,74%	7.342	2,76%	24,80%	
13	Fiat SIENA	742	698	948	6,30%	-21,73%	8.006	2,39%	6.112	2,30%	30,99%	
14	Ford FOCUS	780	672	762	16,07%	2,36%	7.803	2,33%	5.378	2,02%	45,09%	
15	Chevrolet ASTRA	686	653	1.150	5,05%	-40,35%	7.738	2,31%	5.444	2,05%	42,14%	
16	Ford KA	1.023	390	789	162,31%	29,66%	7.601	2,27%	4.991	1,88%	52,29%	
17	Chevrolet MERIVA	716	724	990	-1,10%	-27,68%	7.399	2,21%	6.470	2,43%	14,36%	
18	Chevrolet CORSA II	823	667	750	23,39%	9,73%	7.379	2,20%	5.898	2,22%	25,11%	
19	Suzuki FUN	805	890	1.017	-9,55%	-20,85%	7.123	2,13%	7.788	2,93%	-8,54%	
20	Volkswagen BORA	477	650	646	-26,62%	-26,16%	7.014	2,09%	6.854	2,58%	2,33%	
21	Citroen C3	534	532	600	0,38%	-11,00%	6.613	1,98%	5.725	2,15%	15,51%	
22	Toyota COROLLA	642	575	621	11,65%	3,38%	5.610	1,68%	4.778	1,80%	17,41%	
23	Renault MEGANE II	636	164	623	287,80%	2,09%	5.434	1,62%	1.910	0,72%	184,50%	
24	Renault KANGOO	617	437	553	41,19%	11,57%	4.850	1,45%	3.335	1,25%	45,43%	
25	Fiat PALIO WEEKEND	505	455	545	10,99%	-7,34%	4.746	1,42%	3.436	1,29%	38,13%	
26	Chevrolet CORSA SW	418	450	476	-7,11%	-12,18%	4.582	1,37%	3.567	1,34%	28,46%	
27	Volkswagen GOL COUNTRY	641	440	605	45,68%	5,95%	4.529	1,35%	5.545	2,08%	-18,32%	
28	Volkswagen POLO	430	487	544	-11,70%	-20,96%	4.154	1,24%	6.073	2,28%	-31,60%	
29	Fiat IDEA	465	239	555	94,56%	-16,22%	4.153	1,24%	2.166	0,81%	91,74%	
30	Volkswagen VENTO	458	387	455	18,35%	0,66%	4.012	1,20%	1.939	0,73%	106,91%	
31	Honda FIT	544	205	478	165,37%	13,81%	3.668	1,10%	3.253	1,22%	12,76%	
32	Peugeot PARTNER	319	220	391	45,00%	-18,41%	2.920	0,87%	2.375	0,89%	22,95%	
33	Citroen BERLINGO	235	210	278	11,90%	-15,47%	2.553	0,76%	1.826	0,69%	39,81%	
34	Honda CIVIC	263	108	389	143,52%	-32,39%	2.537	0,76%	1.518	0,57%	67,13%	
35	Renault SCENIC	214	272	177	-21,32%	20,90%	2.472	0,74%	2.710	1,02%	-8,78%	
36	Citroen PICASSO	130	219	217	-40,64%	-40,09%	2.232	0,67%	2.226	0,84%	0,27%	
37	Chevrolet VECTRA	378	58	242	551,72%	56,20%	2.189	0,65%	164	0,06%	1234,76%	
38	Citroen C4	569		958	N/D	-40,61%	1.855	0,55%		0,00%	N/D	
39	Chevrolet ZAFIRA	154	138	158	11,59%	-2,53%	1.403	0,42%	1.301	0,49%	7,84%	
40	Volkswagen GOLF	127	174	70	-27,01%	81,43%	1.315	0,39%	2.793	1,05%	-52,92%	
41	Renault LOGAN	150		265	N/D	-43,40%	1.276	0,38%		0,00%	N/D	
42	Audi A3	95	60	129	58,33%	-26,36%	1.085	0,32%	826	0,31%	31,36%	
43	Volkswagen PASSAT	105	109	97	-3,67%	8,25%	1.031	0,31%	1.036	0,39%	-0,48%	
44	BMW 300 SERIES	128	45	85	184,44%	50,59%	1.003	0,30%	695	0,26%	44,32%	
45	Audi A4	109	58	94	87,93%	15,96%	890	0,27%	731	0,27%	21,75%	
46	Peugeot 206 SW	88	141	86	-37,59%	2,33%	859	0,26%	1.836	0,69%	-53,21%	
47	Toyota COROLLA FIELDER	90	77	94	16,88%	-4,26%	820	0,24%	712	0,27%	15,17%	
48	Mercedes Benz CLASE C	83	36	91	130,56%	-8,79%	752	0,22%	447	0,17%	68,23%	
49	Renault MEGANE II GRAND TOUR	122		107	N/D	14,02%	666	0,20%		0,00%	N/D	
50	Chrysler PT CRUISER	99	40	73	147,50%	35,62%	663	0,20%	411	0,15%	61,31%	
Total		35.579	28.800	40.126			334.805	1	265.967			

Autos - Participacion por Segmento





Patentamientos por Ranking de Livianos y Pesados - Mercado Total

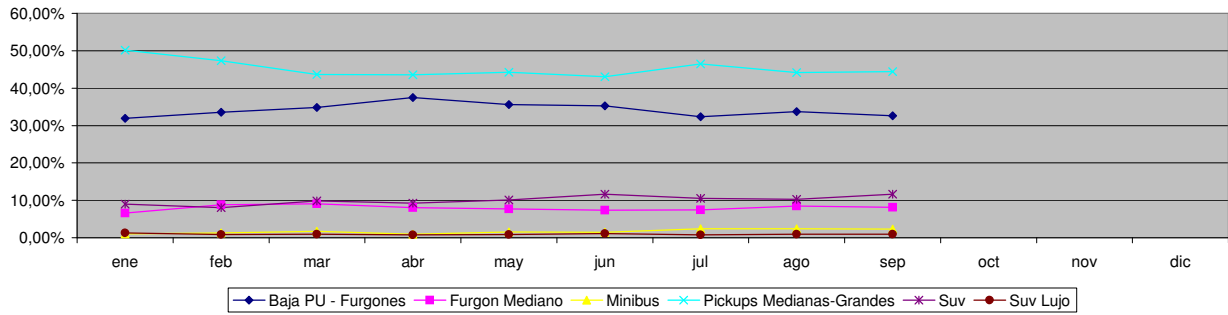
Comercial Liviano											
Rank.	Modelo	sep/07 (a)	sep/06 (b)	ago/07 (c)	Var a-b	Var a-c	Ac. 07	Part %	Ac. 06	Part %	Var 07-06
1	Toyota HILUX	1.416	1.292	1.492	9,60%	-5,09%	13.589	18,44%	10.515	17,47%	29,23%
2	Ford RANGER	1.137	1.107	1.050	2,71%	8,29%	11.230	15,24%	9.886	16,42%	13,59%
3	Renault KANGOO FURGON	872	590	1.001	47,80%	-12,89%	8.538	11,58%	5.844	9,71%	46,10%
4	Chevrolet S-10	908	563	1.084	61,28%	-16,24%	7.615	10,33%	8.743	14,52%	-12,90%
5	Peugeot PARTNER FURGON	545	425	642	28,24%	-15,11%	5.666	7,69%	3.728	6,19%	51,98%
6	Fiat FIORINO	430	274	413	56,93%	4,12%	3.716	5,04%	3.072	5,10%	20,96%
7	Volkswagen SAVEIRO	434	264	484	64,39%	-10,33%	3.530	4,79%	2.190	3,64%	61,19%
8	Citroen BERLINGO FURGON	341	270	415	26,30%	-17,83%	3.132	4,25%	1.991	3,31%	57,31%
9	Mercedes Benz SPRINTER	199	226	285	-11,95%	-30,18%	2.361	3,20%	2.193	3,64%	7,66%
10	Ford F 100	238	208	304	14,42%	-21,71%	2.283	3,10%	1.570	2,61%	45,41%
11	Renault MASTER	312	203	248	53,69%	25,81%	1.871	2,54%	1.385	2,30%	35,09%
12	Toyota HILUX SW4	194	128	194	51,56%	0,00%	1.822	2,47%	1.557	2,59%	17,02%
13	Nissan FRONTIER	180	198	215	-9,09%	-16,28%	1.624	2,20%	1.700	2,82%	-4,47%
14	Honda CRV	286	68	165	320,59%	73,33%	1.442	1,96%	758	1,26%	90,24%
15	Fiat STRADA	110	89	104	23,60%	5,77%	1.173	1,59%	922	1,53%	27,22%
16	Iveco DAILY	90	138	155	-34,78%	-41,94%	1.117	1,52%	1.200	1,99%	-6,92%
17	Fiat UNO	93	75	85	24,00%	9,41%	854	1,16%	748	1,24%	14,17%
18	Volkswagen CADDY	61	138	75	-55,80%	-18,67%	813	1,10%	812	1,35%	0,12%
19	Fiat DUCATO	79	100	84	-21,00%	-5,95%	678	0,92%	860	1,43%	-21,16%
20	Mitsubishi L200	49	47	80	4,26%	-38,75%	649	0,88%	528	0,88%	22,92%
Total		7.974	6.403	8.575			73.703	1	60.202		

Comercial Pesado											
Rank.	Modelo	sep/07 (a)	sep/06 (b)	ago/07 (c)	Var a-b	Var a-c	Ac. 07	Part %	Ac. 06	Part %	Var 07-06
1	Mercedes Benz LS 1634	102	112	165	-8,93%	-38,18%	1.333	11,27%	1.210	15,03%	10,17%
2	Ford CARGO 1722	10	108	20	-90,74%	-50,00%	938	7,93%	974	12,10%	-3,70%
3	Mercedes Benz OF 1418	127		106	N/D	19,81%	914	7,73%		0,00%	N/D
4	Mercedes Benz L-1624	131		169	N/D	-22,49%	855	7,23%		0,00%	N/D
5	Volkswagen 17220	113	91	141	24,18%	-19,86%	853	7,21%	614	7,63%	38,93%
6	Iveco 450 E	90	34	85	164,71%	5,88%	705	5,96%	270	3,35%	161,11%
7	Mercedes Benz L-1620	11	118	15	-90,68%	-26,67%	648	5,48%	1.079	13,41%	-39,94%
8	Ford F-4000	64	51	80	25,49%	-20,00%	616	5,21%	479	5,95%	28,60%
9	Mercedes Benz L1634	59	62	62	-4,84%	-4,84%	597	5,05%	552	6,86%	8,15%
10	Iveco 170 E	83	43	69	93,02%	20,29%	572	4,84%	423	5,26%	35,22%
11	Volkswagen 13180	77	63	100	22,22%	-23,00%	548	4,64%	474	5,89%	15,61%
12	Volkswagen 17310	12	44	39	-72,73%	-69,23%	471	3,98%	401	4,98%	17,46%
13	Mercedes Benz 1315	73	142	45	-48,59%	62,22%	456	3,86%	601	7,47%	-24,13%
14	Mercedes Benz 710	48	47	51	2,13%	-5,88%	441	3,73%	328	4,08%	34,45%
15	Ford CARGO 1722 E	90		134	N/D	-32,84%	435	3,68%		0,00%	N/D
16	Ford CARGO 1730	11	32	18	-65,63%	-38,89%	345	2,92%	147	1,83%	134,69%
17	Scania R340	40		42	N/D	-4,76%	299	2,53%		0,00%	N/D
18	Renault PREMIUM	33	27	50	22,22%	-34,00%	291	2,46%	239	2,97%	21,76%
19	Scania P94	28	11	29	154,55%	-3,45%	253	2,14%	257	3,19%	-1,56%
20	Ford CARGO 1832 E	48		80	N/D	-40,00%	253	2,14%		0,00%	N/D
Total		1.250	985	1.500			11.823	1	8.048		

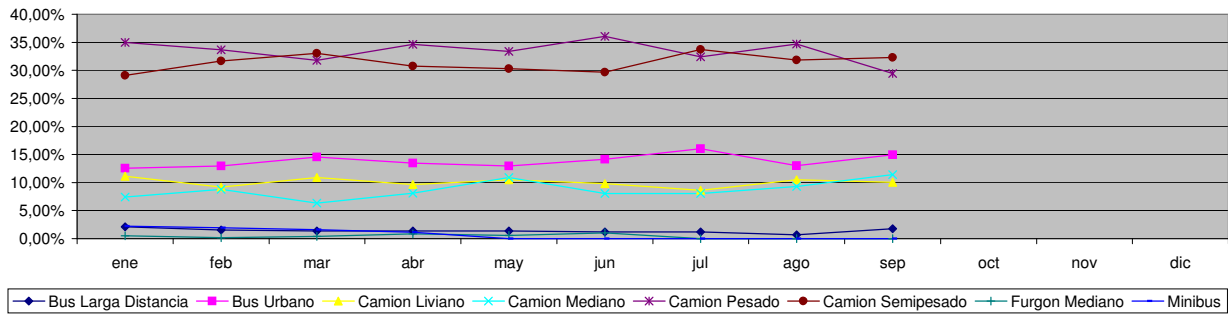


Patentamientos por Ranking de Livianos y Pesados - Mercado Total

Comercial Liviano



Comercial Pesado



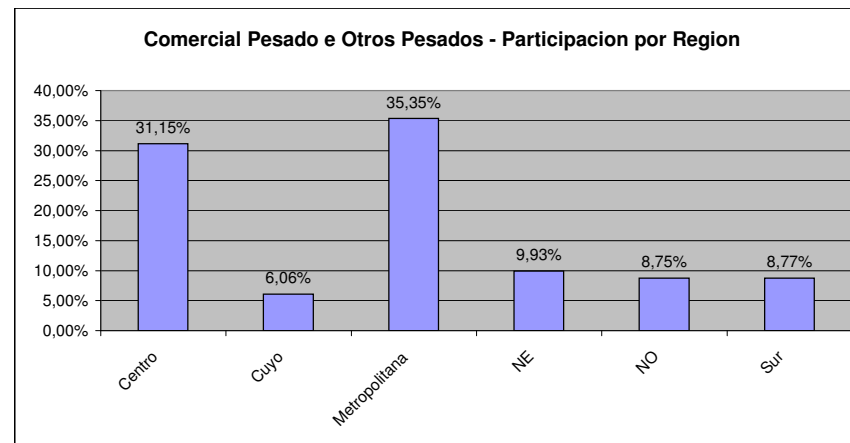
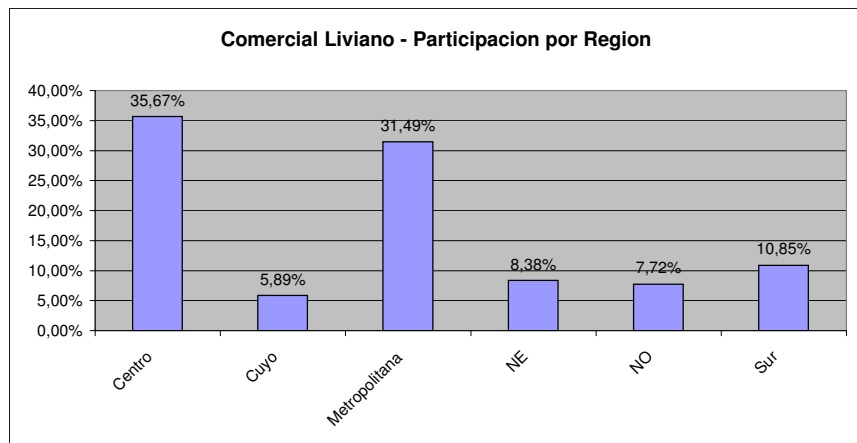
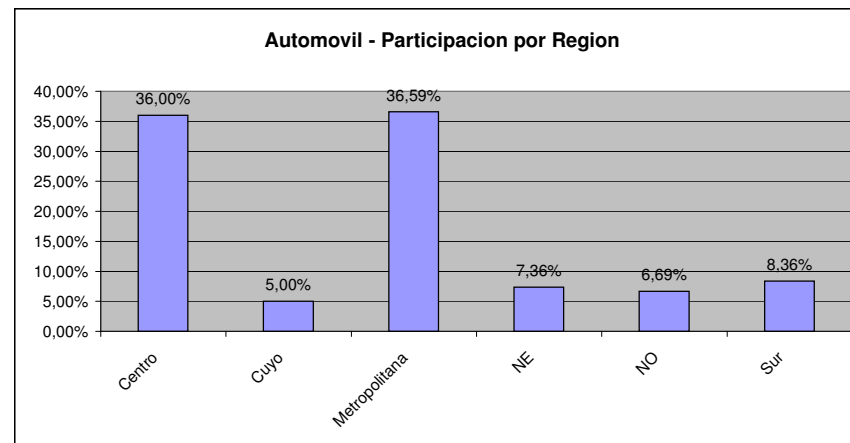
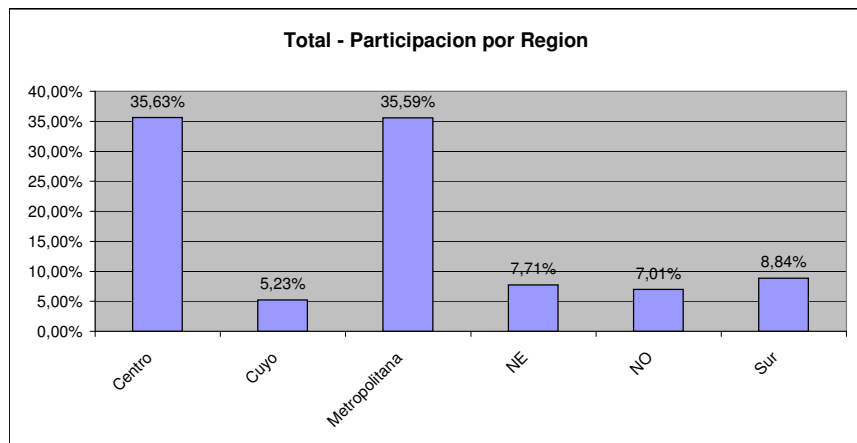


Patentamientos por Provincias y Tipos -

Distrito	Automovil+Comercial Liviano							Comercial Pesado+Otros Pesados							Mercado Total					
	sep/07 (a)	sep/06 (b)	ago/07 (c)	Var a-b	Var a-c	Ac. 07	Ac. 06	Var 07-06	sep/07 (a)	sep/06 (b)	ago/07 (c)	Var a-b	Var a-c	Ac. 07	Ac. 06	Var 07-06	Ac. 07	Ac. 06	Var 07-06	Part %
CAPITAL FEDERAL	9.041	7.927	9.764	14,05%	-7,40%	82.893	71.685	15,64%	861	885	904	-2,71%	-4,76%	7.448	5.824	27,88%	90.341	77.509	16,56%	19,94%
GRAN BUENOS AIRES	7.041	6.054	8.077	16,30%	-12,83%	68.141	52.550	29,67%	313	404	323	-22,52%	-3,10%	2.795	2.118	31,96%	70.937	54.668	29,76%	15,65%
BUENOS AIRES	6.987	5.505	7.978	26,92%	-12,42%	66.195	51.289	29,06%	440	372	493	18,28%	-10,75%	3.682	3.221	14,31%	69.877	54.510	28,19%	15,42%
CORDOBA	4.733	3.499	5.227	35,27%	-9,45%	42.459	36.051	17,77%	288	237	339	21,52%	-15,04%	2.457	2.240	9,69%	44.916	38.291	17,30%	9,91%
SANTA FE	4.455	3.304	5.008	34,84%	-11,04%	38.991	31.244	24,80%	389	269	410	44,61%	-5,12%	2.652	2.456	7,98%	41.643	33.700	23,57%	9,19%
MENDOZA	1.700	1.275	1.774	33,33%	-4,17%	15.090	11.056	36,49%	145	183	162	-20,77%	-10,49%	1.318	1.420	-7,18%	16.408	12.476	31,52%	3,62%
ENTRE RIOS	1.014	724	1.217	40,06%	-16,68%	10.195	7.518	35,61%	110	90	93	22,22%	18,28%	871	783	11,24%	11.066	8.301	33,31%	2,44%
CHUBUT	1.037	938	1.095	10,55%	-5,30%	10.011	8.303	20,57%	86	104	79	-17,31%	8,86%	824	794	3,78%	10.835	9.097	19,11%	2,39%
NEUQUEN	1.025	866	1.092	18,36%	-6,14%	9.314	7.765	19,95%	78	75	73	4,00%	6,85%	678	703	-3,56%	9.992	8.468	18,00%	2,20%
SALTA	892	604	922	47,68%	-3,25%	8.296	5.699	45,57%	94	83	78	13,25%	20,51%	818	593	37,94%	9.114	6.292	44,85%	2,01%
TUCUMAN	782	641	1.017	22,00%	-23,11%	8.259	5.646	46,28%	38	45	73	-15,56%	-47,95%	583	437	33,41%	8.842	6.083	45,36%	1,95%
CORRIENTES	619	459	760	34,86%	-18,55%	6.956	5.188	34,08%	89	81	109	9,88%	-18,35%	865	647	33,69%	7.821	5.835	34,04%	1,73%
RIO NEGRO	776	589	773	31,75%	0,39%	6.824	5.210	30,98%	22	17	27	29,41%	-18,52%	229	230	-0,43%	7.053	5.440	29,65%	1,56%
CHACO	602	481	740	25,16%	-18,65%	6.328	5.022	26,01%	69	68	94	1,47%	-26,60%	641	462	38,74%	6.969	5.484	27,08%	1,54%
SANTA CRUZ	649	511	726	27,01%	-10,61%	6.241	4.562	36,80%	49	62	72	-20,97%	-31,94%	506	484	4,55%	6.747	5.046	33,71%	1,49%
MISIONES	629	418	659	50,48%	-4,55%	5.903	4.861	21,44%	25	36	36	-30,56%	-30,56%	304	479	-36,53%	6.207	5.340	16,24%	1,37%
TIERRA DEL FUEGO	685	583	667	17,50%	2,70%	5.111	4.211	21,37%	14	35	35	-60,00%	-60,00%	303	292	3,77%	5.414	4.503	20,23%	1,19%
LA PAMPA	501	415	597	20,72%	-16,08%	4.800	3.809	26,02%	30	16	30	87,50%	0,00%	235	171	37,43%	5.035	3.980	26,51%	1,11%
JUJUY	425	263	438	61,60%	-2,97%	4.166	3.222	29,30%	80	107	66	-25,23%	21,21%	748	739	1,22%	4.914	3.961	24,06%	1,08%
SAN JUAN	440	267	457	64,79%	-3,72%	3.865	3.021	27,94%	24	27	33	-11,11%	-27,27%	300	257	16,73%	4.165	3.278	27,06%	0,92%
SANTIAGO DEL ESTERO	407	254	492	60,24%	-17,28%	3.766	2.564	46,88%	28	18	41	55,56%	-31,71%	259	234	10,68%	4.025	2.798	43,85%	0,89%
SAN LUIS	297	258	365	15,12%	-18,63%	2.976	2.381	24,99%	15	19	20	-21,05%	-25,00%	139	152	-8,55%	3.115	2.533	22,98%	0,69%
FORMOSA	265	208	298	27,40%	-11,07%	2.674	2.200	21,55%	12	12	24	0,00%	-50,00%	196	91	115,38%	2.870	2.291	25,27%	0,63%
CATAMARCA	344	186	301	84,95%	14,29%	2.729	2.024	34,83%	6	12	8	-50,00%	-25,00%	73	94	-22,34%	2.802	2.118	32,29%	0,62%
LA RIOJA	201	163	219	23,31%	-8,22%	1.995	1.664	19,89%	6	8	3	-25,00%	100,00%	54	111	-51,35%	2.049	1.775	15,44%	0,45%



Patentamientos por Provincias y Tipos -





Patentamientos por Regiones de Buenos Aires

Subregion	Automovil+Comercial Liviano							Comercial Pesado+Otros Pesados							Mercado Total				
	sep/07 (a)	sep/06 (b)	ago/07 (c)	Var a-b	Var a-c	Ac. 07	Ac. 06	Var 07-06	sep/07 (a)	sep/06 (b)	ago/07 (c)	Var a-b	Var a-c	Ac. 07	Ac. 06	Var 07-06	Ac. 07	Ac. 06	Var 07-06
GRAN BUENOS AIRES-OESTE	2.849	2.369	3.171	20,26%	-10,15%	27.283	20.458	33,36%	142	226	162	-37,17%	-12,35%	1.180	943	25,13%	28.464	21.401	33,00%
GRAN BUENOS AIRES-SUR	2.491	2.166	2.872	15,00%	-13,27%	24.337	18.525	31,37%	132	118	121	11,86%	9,09%	1.157	809	43,02%	25.494	19.334	31,86%
GRAN BUENOS AIRES-NORTE	1.701	1.519	2.034	11,98%	-16,37%	16.521	13.567	21,77%	39	60	40	-35,00%	-2,50%	458	366	25,14%	16.979	13.933	21,86%
BUENOS AIRES-NORTE	1.473	1.201	1.689	22,65%	-12,79%	13.761	10.715	28,43%	124	64	143	93,75%	-13,29%	880	735	19,73%	14.641	11.450	27,87%
BUENOS AIRES-ATLANTICA	1.249	940	1.450	32,87%	-13,86%	12.500	9.689	29,01%	43	40	47	7,50%	-8,51%	415	366	13,39%	12.915	10.055	28,44%
BUENOS AIRES-LA PLATA	1.306	1.047	1.521	24,74%	-14,14%	12.580	9.240	36,15%	26	24	27	8,33%	-3,70%	193	214	-9,81%	12.773	9.454	35,11%
BUENOS AIRES-OESTE	1.205	959	1.339	25,65%	-10,01%	11.364	9.076	25,21%	123	132	134	-6,82%	-8,21%	1.099	897	22,52%	12.463	9.973	24,97%
BUENOS AIRES-CENTRO	888	687	1.021	29,26%	-13,03%	8.193	6.421	27,60%	68	55	78	23,64%	-12,82%	623	537	16,01%	8.816	6.958	26,70%
BUENOS AIRES-SUR	866	671	958	29,06%	-9,60%	7.797	6.148	26,82%	56	57	64	-1,75%	-12,50%	472	472	0,00%	8.269	6.620	24,91%



Patentamientos por Regiones de Buenos Aires

