



Patentamientos por Marcas - Mercado Total

	mar/10(a)	feb/10(b)	mar/09(c)	mar/08(d)	Var a-b	Var a-c	Var a-d	Ac. 10	Ac. 09	Var 10-09
Automovil	43.535	35.615	31.842	32.581	22,24%	36,72%	33,62%	141.344	119.961	17,82%
Comercial Liviano	10.413	7.760	7.568	8.749	34,19%	37,59%	19,02%	32.026	27.923	14,69%
Comercial Pesado	1.613	869	1.137	1.748	85,62%	41,86%	-7,72%	4.101	4.027	1,84%
Otros Pesados	936	518	756	1.199	80,69%	23,81%	-21,93%	2.255	2.394	-5,81%
Total	56.497	44.762	41.303	44.277	26,22%	36,79%	27,60%	179.726	154.305	16,47%
Prom. diario	2.568	2.238	1.967	2.460				2.899	2.530	
Dias habiles	22	20	21	18				62	61	

Patentamientos por origen		
	10-Mar	Ac. 10
Importados	0	75.991
Nacionales	0	47.238



■ Importados ■ Nacionales

Patentamientos Mensuales

	ene	feb	mar	abr	may	jun	jul	ago	sep	oct	nov	dic
2010	78.467	44.762	56.497									
2009	73.927	39.075	41.303	40.538	40.147	44.108	46.633	42.434	46.021	39.963	37.493	23.282
Var% 10-09	6,14%	14,55%	36,79%	-100,00%	-100,00%	-100,00%	-100,00%	-100,00%	-100,00%	-100,00%	-100,00%	-100,00%
2008	85.811	46.476	44.277	56.149	56.809	49.082	58.414	51.110	56.197	51.036	35.528	19.891
2007	82.552	38.841	47.379	41.626	47.231	42.139	50.181	54.285	48.857	49.497	40.640	24.528

Patentamientos por Marcas - Totales

Marca	2010		2010		2009		2009		Var				
	mar/10(a)	Part %	ene - mar	Part %	ene - mar	Part %	2010-2009						
Volkswagen	10.889	19,60%	7.596	18,74%	9.754	22,05%	43,35%	11,64%	33.039	18,62%	28.758	18,93%	14,89%
Chevrolet	9.131	16,44%	5.032	12,41%	7.229	16,34%	81,46%	26,31%	28.139	15,86%	21.160	13,93%	32,98%
Ford	6.847	12,33%	5.614	13,85%	4.753	10,74%	21,96%	44,06%	23.238	13,10%	19.721	12,98%	17,83%
Renault	6.003	10,81%	5.173	12,76%	4.888	11,05%	16,04%	22,81%	20.557	11,58%	17.391	11,45%	18,20%
Fiat	5.507	9,91%	4.171	10,29%	4.686	10,59%	32,03%	17,52%	19.201	10,82%	14.450	9,51%	32,88%
Peugeot	4.577	8,24%	3.831	9,45%	3.287	7,43%	19,47%	39,25%	14.114	7,95%	14.449	9,51%	-2,32%
Toyota	3.065	5,52%	2.549	6,29%	2.277	5,15%	20,24%	34,61%	9.919	5,59%	9.834	6,47%	0,86%
Citroen	2.087	3,76%	1.788	4,41%	1.863	4,21%	16,72%	12,02%	6.398	3,61%	6.552	4,31%	-2,35%
Honda	1.821	3,28%	1.349	3,33%	1.583	3,58%	34,99%	15,03%	6.193	3,49%	5.731	3,77%	8,06%
Mercedes Benz	1.171	2,11%	887	2,19%	721	1,63%	32,02%	62,41%	3.355	1,89%	3.393	2,23%	-1,12%
Suzuki	867	1,56%	517	1,28%	631	1,43%	67,70%	37,40%	2.720	1,53%	1.881	1,24%	44,60%
Nissan	755	1,36%	298	0,74%	586	1,32%	153,36%	28,84%	2.101	1,18%	1.308	0,86%	60,63%
Hyundai	419	0,75%	267	0,66%	298	0,67%	56,93%	40,60%	1.233	0,69%	1.188	0,78%	3,79%
Audi	368	0,66%	242	0,60%	370	0,84%	52,07%	-0,54%	1.170	0,66%	1.079	0,71%	8,43%
BMW	332	0,60%	137	0,34%	279	0,63%	142,34%	19,00%	1.161	0,65%	748	0,49%	55,21%
Dodge	358	0,64%	132	0,33%	141	0,32%	171,21%	153,90%	889	0,50%	495	0,33%	79,60%
Kia	220	0,40%	168	0,41%	183	0,41%	30,95%	20,22%	699	0,39%	664	0,44%	5,27%
Iveco	221	0,40%	174	0,43%	170	0,38%	27,01%	30,00%	670	0,38%	593	0,39%	12,98%
Chery	200	0,36%	76	0,19%	126	0,28%	163,16%	58,73%	633	0,36%	263	0,17%	140,68%
Jeep	99	0,18%	69	0,17%	73	0,17%	43,48%	35,62%	337	0,19%	326	0,21%	3,37%
Mitsubishi	106	0,19%	47	0,12%	87	0,20%	125,53%	21,84%	336	0,19%	245	0,16%	37,14%
Scania	124	0,22%	109	0,27%	52	0,12%	13,76%	138,46%	279	0,16%	390	0,26%	-28,46%
Agrale	96	0,17%	50	0,12%	36	0,08%	92,00%	166,67%	231	0,13%	196	0,13%	17,86%
Chrysler	36	0,06%	93	0,23%	22	0,05%	-61,29%	63,64%	176	0,10%	348	0,23%	-49,43%
Volvo	50	0,09%	60	0,15%	39	0,09%	-16,67%	28,21%	132	0,07%	237	0,16%	-44,30%
Subaru	54	0,10%	19	0,05%	31	0,07%	184,21%	74,19%	128	0,07%	97	0,06%	31,96%
Puma de Tat	47	0,08%	10	0,02%	17	0,04%	370,00%	176,47%	112	0,06%	47	0,03%	138,30%
Mini	32	0,06%	30	0,07%	24	0,05%	6,67%	33,33%	111	0,06%	116	0,08%	-4,31%
Seat	26	0,05%	29	0,07%	13	0,03%	-10,34%	100,00%	67	0,04%	179	0,12%	-62,57%
Alfa Romeo	15	0,03%		0,00%	7	0,02%	N/D	114,29%	43	0,02%		0,00%	N/D
Porsche	14	0,03%	7	0,02%	4	0,01%	100,00%	250,00%	36	0,02%	25	0,02%	44,00%
Land Rover	11	0,02%	8	0,02%	5	0,01%	37,50%	120,00%	24	0,01%	31	0,02%	-22,58%
Jaguar	4	0,01%		0,00%	2	0,00%	N/D	100,00%	6	0,00%		0,00%	N/D
Ferrari		0,00%		0,00%		0,00%	N/D	N/D	2	0,00%	1	0,00%	100,00%
Mack		0,00%	1	0,00%	2	0,00%	-100,00%	-100,00%	2	0,00%	1	0,00%	100,00%
Materfer		0,00%	10	0,02%		0,00%	-100,00%	N/D		0,00%	10	0,01%	-100,00%
Total	55.552		40.543		44.239				177.451		151.907		

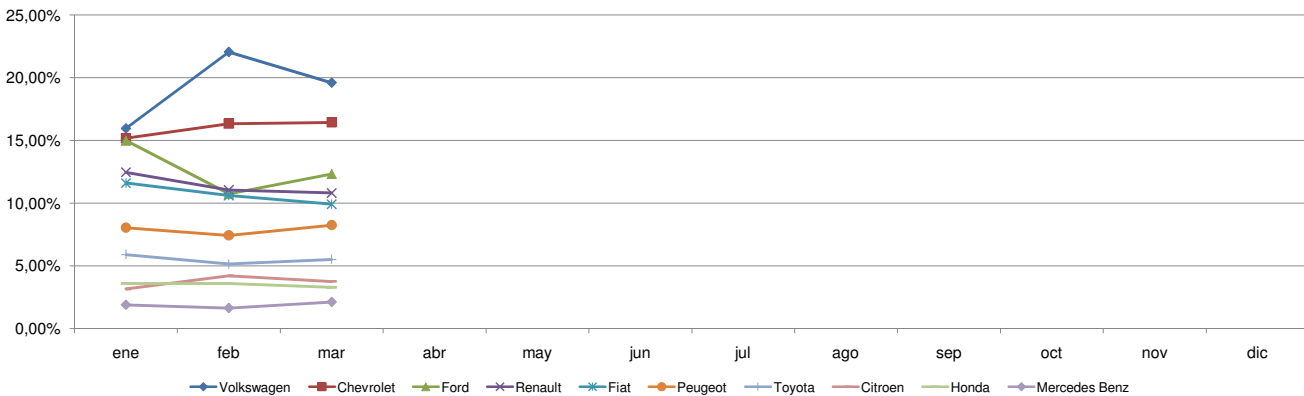


Patentamientos por Marcas - Mercado Total

Patentamientos por Marcas - Autos + Livianos								2010	2010	2009	2009	Var	
Marca	mar/10(a)	Part %	mar/09(c)	Part %	feb/10(e)	Part %	Var a-c	Var a-e	ene - mar	Part %	ene - mar	Part %	2010-2009
Volkswagen	10.744	19,92%	7.491	19,01%	9.672	22,30%	43,43%	11,08%	32.667	18,84%	28.395	19,20%	15,04%
Chevrolet	9.131	16,93%	5.032	12,77%	7.229	16,67%	81,46%	26,31%	28.139	16,23%	21.160	14,31%	32,98%
Ford	6.486	12,02%	5.436	13,79%	4.564	10,52%	19,32%	42,11%	22.403	12,92%	19.077	12,90%	17,43%
Toyota	5.964	11,06%	5.154	13,08%	4.870	11,23%	15,72%	22,46%	20.453	11,80%	17.333	11,72%	18,00%
Renault	5.507	10,21%	4.171	10,58%	4.686	10,80%	32,03%	17,52%	19.201	11,08%	14.450	9,77%	32,88%
Peugeot	4.577	8,48%	3.831	9,72%	3.287	7,58%	19,47%	39,25%	14.114	8,14%	14.449	9,77%	-2,32%
Mercedes Benz	3.065	5,68%	2.549	6,47%	2.277	5,25%	20,24%	34,61%	9.919	5,72%	9.834	6,65%	0,86%
Citroen	2.087	3,87%	1.788	4,54%	1.863	4,30%	16,72%	12,02%	6.398	3,69%	6.552	4,43%	-2,35%
Honda	1.821	3,38%	1.349	3,42%	1.583	3,65%	34,99%	15,03%	6.193	3,57%	5.731	3,88%	8,06%
Suzuki	867	1,61%	517	1,31%	631	1,45%	67,70%	37,40%	2.720	1,57%	1.881	1,27%	44,60%
Nissan	755	1,40%	298	0,76%	586	1,35%	153,36%	28,84%	2.101	1,21%	1.308	0,88%	60,63%
Mercedes Benz	588	1,09%	399	1,01%	396	0,91%	47,37%	48,48%	1.787	1,03%	1.673	1,13%	6,81%
Hyundai	394	0,73%	253	0,64%	281	0,65%	55,73%	40,21%	1.176	0,68%	1.147	0,78%	2,53%
Audi	368	0,68%	242	0,61%	370	0,85%	52,07%	-0,54%	1.170	0,67%	1.077	0,73%	8,64%
BMW	332	0,62%	137	0,35%	279	0,64%	142,34%	19,00%	1.161	0,67%	748	0,51%	55,21%
Dodge	358	0,66%	132	0,33%	141	0,33%	171,21%	153,90%	889	0,51%	495	0,33%	79,60%
Kia	220	0,41%	168	0,43%	183	0,42%	30,95%	20,22%	699	0,40%	664	0,45%	5,27%
Chery	200	0,37%	76	0,19%	126	0,29%	163,16%	58,73%	633	0,37%	263	0,18%	140,68%
Jeep	99	0,18%	69	0,18%	73	0,17%	43,48%	35,62%	337	0,19%	326	0,22%	3,37%
Mitsubishi	106	0,20%	47	0,12%	87	0,20%	125,53%	21,84%	336	0,19%	245	0,17%	37,14%
Iveco	67	0,12%	67	0,17%	57	0,13%	0,00%	17,54%	218	0,13%	203	0,14%	7,39%
Chrysler	36	0,07%	93	0,24%	22	0,05%	-61,29%	63,64%	176	0,10%	348	0,24%	-49,43%
Subaru	54	0,10%	19	0,05%	31	0,07%	184,21%	74,19%	128	0,07%	97	0,07%	31,96%
Mini	32	0,06%	30	0,08%	24	0,06%	6,67%	33,33%	111	0,06%	116	0,08%	-4,31%
Seat	26	0,05%	29	0,07%	13	0,03%	-10,34%	100,00%	67	0,04%	179	0,12%	-62,57%
Volvo	19	0,04%	17	0,04%	24	0,06%	11,76%	-20,83%	56	0,03%	74	0,05%	-24,32%
Alfa Romeo	15	0,03%		0,00%	7	0,02%	N/D	114,29%	43	0,02%		0,00%	N/D
Porsche	14	0,03%	7	0,02%	4	0,01%	100,00%	250,00%	36	0,02%	25	0,02%	44,00%
Land Rover	11	0,02%	8	0,02%	5	0,01%	37,50%	120,00%	24	0,01%	31	0,02%	-22,58%
Jaguar	4	0,01%		0,00%	2	0,00%	N/D	100,00%	6	0,00%		0,00%	N/D
Ferrari		0,00%		0,00%		0,00%	N/D	N/D	2	0,00%	1	0,00%	100,00%
Agrale		0,00%		0,00%		0,00%	N/D	N/D		0,00%	1	0,00%	-100,00%
Total	53.947		39.409		43.373				173.363		147.883		

Patentamientos por Marcas - Camiones + Buses								2010	2010	2009	2009	Var	
Marca	mar/10(a)	Part %	mar/09(c)	Part %	feb/10(e)	Part %	Var a-c	Var a-e	ene - mar	Part %	ene - mar	Part %	2010-2009
Mercedes Benz	583	36,32%	488	43,03%	325	37,53%	19,47%	79,38%	1.568	38,36%	1.720	42,74%	-8,84%
Ford	361	22,49%	178	15,70%	189	21,82%	102,81%	91,01%	835	20,43%	644	16,00%	29,68%
Iveco	154	9,60%	107	9,44%	113	13,05%	43,93%	36,28%	452	11,06%	390	9,69%	15,90%
Volkswagen	145	9,03%	105	9,26%	82	9,47%	38,10%	76,83%	372	9,10%	363	9,02%	2,48%
Scania	124	7,73%	109	9,61%	52	6,00%	13,76%	138,46%	279	6,82%	390	9,69%	-28,46%
Agrale	96	5,98%	50	4,41%	36	4,16%	92,00%	166,67%	231	5,65%	195	4,85%	18,46%
Puma de Tat	47	2,93%	10	0,88%	17	1,96%	370,00%	176,47%	112	2,74%	47	1,17%	138,30%
Renault	39	2,43%	19	1,68%	18	2,08%	105,26%	116,67%	104	2,54%	58	1,44%	79,31%
Volvo	31	1,93%	43	3,79%	15	1,73%	-27,91%	106,67%	76	1,86%	163	4,05%	-53,37%
Hyundai	25	1,56%	14	1,23%	17	1,96%	78,57%	47,06%	57	1,39%	41	1,02%	39,02%
Mack		0,00%	1	0,09%	2	0,23%	-100,00%	-100,00%	2	0,05%	1	0,02%	100,00%
Audi		0,00%		0,00%		0,00%	N/D	N/D		0,00%	2	0,05%	-100,00%
Materfer		0,00%	10	0,88%		0,00%	-100,00%	N/D		0,00%	10	0,25%	-100,00%
Total	1.605		1.134		866				4.088		4.024		

Participacion por Marcas - Evolucion Mensual

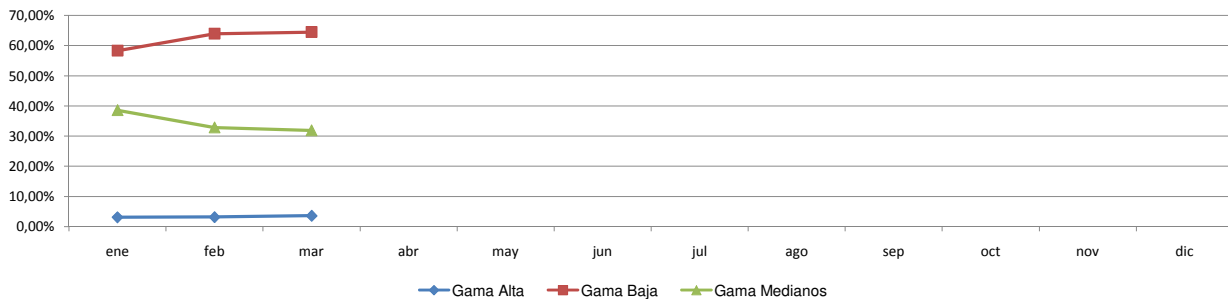




Patentamientos por Ranking de Automoviles - Mercado Total

Rank.	Ranking Por Modelos - Automoviles										
	Modelo	mar/10 (a)	mar/09 (b)	feb/10 (c)	Var a-b	Var a-c	Ac. 10	Part %	Ac. 09	Part %	Var 10-09
1	Chevrolet CORSA	3.009	1.630	2.843	84,60%	5,84%	9.090	6,43%	7.386	6,16%	23,07%
2	Volkswagen GOL TREND	2.645	1.827	2.209	44,77%	19,74%	7.255	5,13%	6.204	5,17%	16,94%
3	Peugeot 207 COMPACT	2.585	1.818	1.513	42,19%	70,85%	7.172	5,07%	7.392	6,16%	-2,98%
4	Volkswagen SURAN	2.088	1.315	1.865	58,78%	11,96%	6.438	4,55%	4.617	3,85%	39,44%
5	Volkswagen GOL	1.820	1.156	2.000	57,44%	-9,00%	6.251	4,42%	4.945	4,12%	26,41%
6	Ford ECOSPORT	1.412	1.363	1.121	3,60%	25,96%	5.883	4,16%	5.462	4,55%	7,71%
7	Renault SANDERO	1.667	699	1.090	138,48%	52,94%	5.431	3,84%	2.295	1,91%	136,64%
8	Volkswagen BORA	785	628	1.181	25,00%	-33,53%	4.240	3,00%	3.876	3,23%	9,39%
9	Ford FIESTA	1.096	1.022	923	7,24%	18,74%	3.771	2,67%	3.496	2,91%	7,87%
10	Fiat SIENA	1.051	968	936	8,57%	12,29%	3.689	2,61%	3.108	2,59%	18,69%
11	Ford KA	1.527	1.007	769	51,64%	98,57%	3.613	2,56%	2.972	2,48%	21,57%
12	Chevrolet AGILE	1.072		1.011	N/D	6,03%	3.581	2,53%		0,00%	N/D
13	Volkswagen VOYAGE	1.254	792	934	58,33%	34,26%	3.300	2,33%	2.030	1,69%	62,56%
14	Chevrolet AVEO	841	440	732	91,14%	14,89%	3.108	2,20%	1.350	1,13%	130,22%
15	Renault CLIO	900	760	784	18,42%	14,80%	3.089	2,19%	4.694	3,91%	-34,19%
16	Fiat PUNTO	813	350	636	132,29%	27,83%	3.017	2,13%	1.309	1,09%	130,48%
17	Fiat PALIO	776	822	751	-5,60%	3,33%	2.978	2,11%	2.776	2,31%	7,28%
18	Ford FOCUS II	767	471	519	62,85%	47,78%	2.978	2,11%	1.630	1,36%	82,70%
19	Honda FIT	785	870	727	-9,77%	7,98%	2.829	2,00%	3.239	2,70%	-12,66%
20	Toyota COROLLA	833	676	745	23,22%	11,81%	2.812	1,99%	2.640	2,20%	6,52%
21	Peugeot 307	815	758	559	7,52%	45,80%	2.734	1,93%	3.007	2,51%	-9,08%
22	Fiat UNO	847	728	634	16,35%	33,60%	2.470	1,75%	2.544	2,12%	-2,91%
23	Suzuki FUN	749	241	554	210,79%	35,20%	2.454	1,74%	983	0,82%	149,64%
24	Renault SYMBOL	578	506	601	14,23%	-3,83%	2.357	1,67%	817	0,68%	188,49%
25	Chevrolet MERIVA	777	405	561	91,85%	38,50%	2.280	1,61%	1.814	1,51%	25,69%
26	Citroen C4	742	747	567	-0,67%	30,86%	2.198	1,56%	2.886	2,41%	-23,84%
27	Fiat PALIO WEEKEND	564	364	445	54,95%	26,74%	2.042	1,44%	1.665	1,39%	22,64%
28	Chevrolet ASTRA	665	678	286	-1,92%	132,52%	2.022	1,43%	3.218	2,68%	-37,17%
29	Renault KANGOO	445	428	515	3,97%	-13,59%	2.007	1,42%	1.574	1,31%	27,51%
30	Renault LOGAN	637	397	474	60,45%	34,39%	1.904	1,35%	891	0,74%	113,69%
31	Chevrolet CORSA II	622	419	469	48,45%	32,62%	1.879	1,33%	1.877	1,56%	0,11%
32	Honda CITY	530		480	N/D	10,42%	1.848	1,31%		0,00%	N/D
33	Citroen C3	556	281	634	97,86%	-12,30%	1.748	1,24%	1.139	0,95%	53,47%
34	Nissan TIIDA	597	221	484	170,14%	23,35%	1.724	1,22%	916	0,76%	88,21%
35	Peugeot 206	652	274	393	137,96%	65,90%	1.579	1,12%	957	0,80%	64,99%
36	Volkswagen VENTO	513	313	445	63,90%	15,28%	1.502	1,06%	1.223	1,02%	22,81%
37	Renault MEGANE II	432	427	344	1,17%	25,58%	1.498	1,06%	1.376	1,15%	8,87%
38	Ford FOCUS	157	538	197	-70,82%	-20,30%	1.385	0,98%	1.825	1,52%	-24,11%
39	Chevrolet VECTRA	437	184	157	137,50%	178,34%	1.091	0,77%	788	0,66%	38,45%
40	Chevrolet CORSA SW	389	198	317	96,46%	22,71%	1.053	0,75%	945	0,79%	11,43%
41	Volkswagen FOX/CROSSFOX	437	586	179	-25,43%	144,13%	1.013	0,72%	2.135	1,78%	-52,55%
42	Citroen PICASSO	286	216	254	32,41%	12,60%	874	0,62%	746	0,62%	17,16%
43	Fiat IDEA	224	163	204	37,42%	9,80%	864	0,61%	659	0,55%	31,11%
44	Fiat LINEA	177	105	191	68,57%	-7,33%	787	0,56%	114	0,10%	590,35%
45	Honda CIVIC	193	205	168	-5,85%	14,88%	701	0,50%	1.189	0,99%	-41,04%
46	BMW 300 SERIES	164	50	151	228,00%	8,61%	641	0,45%	265	0,22%	141,89%
47	Dodge JOURNEY	284	85	79	234,12%	259,49%	638	0,45%	281	0,23%	127,05%
48	Chevrolet ZAFIRA	229	98	95	133,67%	141,05%	579	0,41%	445	0,37%	30,11%
49	Peugeot PARTNER	52	109	109	-52,29%	-52,29%	496	0,35%	548	0,46%	-9,49%
50	Mercedes Benz CLASE C	148	106	98	39,62%	51,02%	472	0,33%	478	0,40%	-1,26%
51	Otros	1.910	3.397	1.682	-43,77%	13,56%	5.977	4,23%	11.234	9,36%	-46,80%
Total		43.534	31.841	35.615			141.342	1	119.960		

Autos - Participacion por Segmento





Patentamientos por Ranking de Livianos y Pesados - Mercado Total

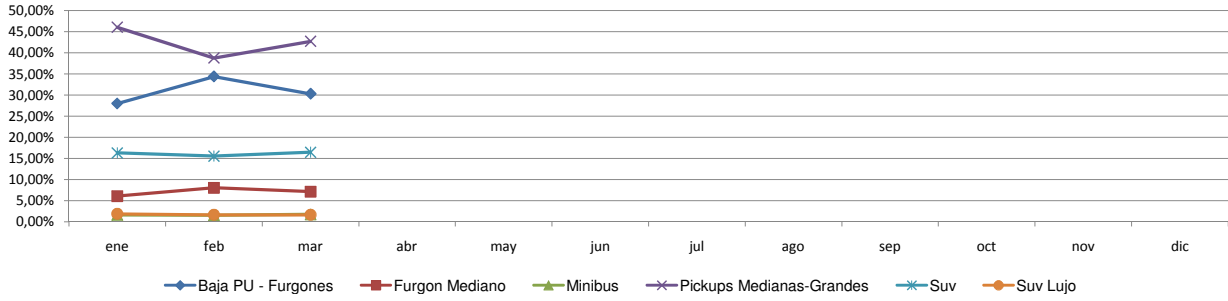
Rank.	Comercial Liviano										
	Modelo	mar/10 (a)	mar/09 (b)	feb/10 (c)	Var a-b	Var a-c	Ac. 10	Part %	Ac. 09	Part %	Var 10-09
1	Toyota HILUX	1.841	1.558	1.264	18,16%	45,65%	5.901	18,43%	5.702	20,42%	3,49%
2	Ford RANGER	1.197	646	837	85,29%	43,01%	3.793	11,85%	2.617	9,37%	44,94%
3	Chevrolet S-10	843	428	497	96,96%	69,62%	2.624	8,19%	1.739	6,23%	50,89%
4	Renault KANGOO FURGON	785	623	653	26,00%	20,21%	2.542	7,94%	2.134	7,64%	19,12%
5	Fiat FIORINO	586	402	533	45,77%	9,94%	2.027	6,33%	1.391	4,98%	45,72%
6	Peugeot PARTNER FURGON	353	551	521	-35,93%	-32,25%	1.593	4,97%	1.639	5,87%	-2,81%
7	Volkswagen SAVEIRO	640	267	359	139,70%	78,27%	1.098	3,43%	971	3,48%	13,08%
8	Citroen BERLINGO FURGON	353	352	300	0,28%	17,67%	1.085	3,39%	1.115	3,99%	-2,69%
9	Renault MASTER	294	191	230	53,93%	27,83%	858	2,68%	672	2,41%	27,68%
10	Mercedes Benz SPRINTER	287	193	190	48,70%	51,05%	854	2,67%	832	2,98%	2,64%
11	Fiat STRADA	264	104	169	153,85%	56,21%	765	2,39%	370	1,33%	106,76%
12	Honda CRV	260	234	173	11,11%	50,29%	680	2,12%	1.073	3,84%	-36,63%
13	Toyota HILUX SW4	216	162	135	33,33%	60,00%	641	2,00%	773	2,77%	-17,08%
14	Chery TIGGO	200	76	126	163,16%	58,73%	633	1,98%	263	0,94%	140,68%
15	Ford F 100	172	269	110	-36,06%	56,36%	556	1,74%	670	2,40%	-17,01%
16	Toyota RAV 4	138	114	106	21,05%	30,19%	473	1,48%	521	1,87%	-9,21%
17	Hyundai TUCSON	205	68	80	201,47%	156,25%	473	1,48%	332	1,19%	42,47%
18	Mitsubishi L200	101	27	74	274,07%	36,49%	301	0,94%	156	0,56%	92,95%
19	Fiat UNO	117	66	61	77,27%	91,80%	285	0,89%	208	0,74%	37,02%
20	Renault KOLEOS	51	74	66	-31,08%	-22,73%	265	0,83%	119	0,43%	122,69%
21	Otros	1.510	1.163	1.274	29,84%	18,52%	4.574	14,28%	4.626	16,57%	-1,12%
Total		10.413	7.568	7.758			32.021	1	27.923		

Rank.	Comercial Pesado										
	Modelo	mar/10 (a)	mar/09 (b)	feb/10 (c)	Var a-b	Var a-c	Ac. 10	Part %	Ac. 09	Part %	Var 10-09
1	Mercedes Benz 1418	166	110	74	50,91%	124,32%	408	9,98%	277	6,88%	47,29%
2	Ford CARGO 1722 E	170	65	57	161,54%	198,25%	325	7,95%	215	5,34%	51,16%
3	Iveco 170 E	86	54	58	59,26%	48,28%	223	5,45%	172	4,27%	29,65%
4	Ford F-4000	69	48	48	43,75%	43,75%	190	4,65%	165	4,10%	15,15%
5	Mercedes Benz L-1624	71	66	41	7,58%	73,17%	168	4,11%	247	6,14%	-31,98%
6	Mercedes Benz BMO 368	40		21	N/D	90,48%	145	3,55%		0,00%	N/D
7	Mercedes Benz 710	62	29	30	113,79%	106,67%	143	3,50%	117	2,91%	22,22%
8	Volkswagen 17220	38	31	25	22,58%	52,00%	91	2,23%	123	3,06%	-26,02%
9	Mercedes Benz LS 1634	38	17	24	123,53%	58,33%	85	2,08%	114	2,83%	-25,44%
10	Iveco 450 E	21	9	15	133,33%	40,00%	83	2,03%	54	1,34%	53,70%
11	Agrale MT12	38	27	10	40,74%	280,00%	79	1,93%	133	3,31%	-40,60%
12	Mercedes Benz ATEGO 1725	32	20	16	60,00%	100,00%	77	1,88%	132	3,28%	-41,67%
13	Ford CARGO 712	33	15	21	120,00%	57,14%	77	1,88%	40	0,99%	92,50%
14	Iveco 490 S	30	13	18	130,77%	66,67%	75	1,83%	60	1,49%	25,00%
15	Puma de Tat D12	28	5	8	460,00%	250,00%	75	1,83%	34	0,84%	120,59%
16	Volkswagen 19320	24	12	25	100,00%	-4,00%	72	1,76%	32	0,80%	125,00%
17	Scania G340	31	32	20	-3,13%	55,00%	71	1,74%	128	3,18%	-44,53%
18	Ford CARGO 1517 E	23	16	14	43,75%	64,29%	70	1,71%	65	1,62%	7,69%
19	Volkswagen 13180	27	20	11	35,00%	145,45%	69	1,69%	66	1,64%	4,55%
20	Scania K 380	30	8	1	275,00%	2900,00%	69	1,69%	32	0,80%	115,63%
21	Otros	548	537	329	2,05%	66,57%	1.493	36,52%	1.818	45,18%	-17,88%
Total		1.605	1.134	866			4.088	1	4.024		

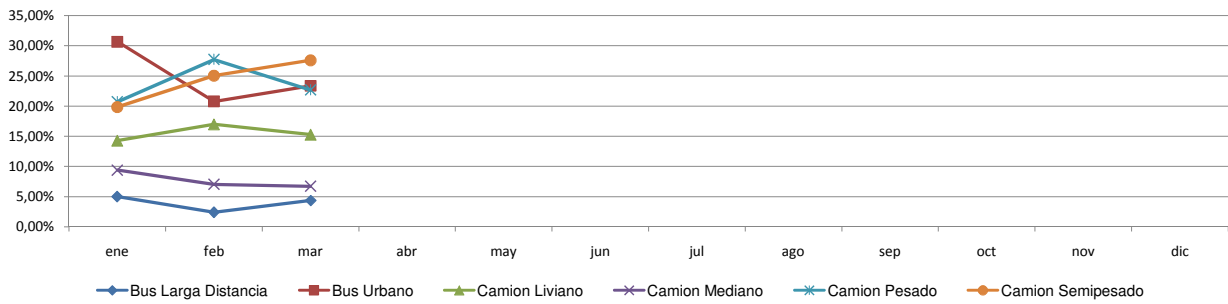


Patentamientos por Ranking de Livianos y Pesados - Mercado Total

Comercial Liviano



Comercial Pesado





Patentamientos por Provincias y Tipos -

Distrito	Automovil+Comercial Liviano							Comercial Pesado+Otros Pesados							Mercado Total					
	mar/10 (a)	mar/09 (b)	feb/10 (c)	Var a-b	Var a-c	Ac. 10	Ac. 09	Var 10-09	mar/10 (a)	mar/09 (b)	feb/10 (c)	Var a-b	Var a-c	Ac. 10	Ac. 09	Var 10-09	Ac. 10	Ac. 09	Var 10-09	Part %
GRAN BUENOS AIRES	9.849	6.765	7.861	45,59%	25,29%	30.738	24.701	24,44%	254	168	136	51,19%	86,76%	642	572	12,24%	31.380	25.273	24,16%	17,46%
CAPITAL FEDERAL	9.671	6.722	7.842	43,87%	23,32%	29.186	24.302	20,10%	690	425	335	62,35%	105,97%	1.718	1.418	21,16%	30.904	25.720	20,16%	17,20%
BUENOS AIRES	8.410	6.216	6.497	35,30%	29,44%	26.129	22.676	15,23%	292	200	172	46,00%	69,77%	729	764	-4,58%	26.858	23.440	14,58%	14,94%
CORDOBA	5.251	4.122	4.408	27,39%	19,12%	17.779	15.847	12,19%	198	193	116	2,59%	70,69%	461	579	-20,38%	18.240	16.426	11,04%	10,15%
SANTA FE	4.230	3.139	3.505	34,76%	20,68%	14.450	12.379	16,73%	209	161	121	29,81%	72,73%	582	577	0,87%	15.032	12.956	16,02%	8,36%
MENDOZA	2.039	1.440	1.567	41,60%	30,12%	6.648	5.287	25,74%	84	117	62	-28,21%	35,48%	229	305	-24,92%	6.877	5.592	22,98%	3,83%
ENTRE RIOS	1.359	970	1.102	40,10%	23,32%	4.459	3.726	19,67%	101	54	59	87,04%	71,19%	228	223	2,24%	4.687	3.949	18,69%	2,61%
TUCUMAN	1.088	800	903	36,00%	20,49%	3.890	2.993	29,97%	79	72	27	9,72%	192,59%	136	188	-27,66%	4.026	3.181	26,56%	2,24%
CHUBUT	1.142	1.060	931	7,74%	22,66%	3.828	4.059	-5,69%	62	43	39	44,19%	58,97%	154	156	-1,28%	3.982	4.215	-5,53%	2,22%
CORRIENTES	1.148	753	867	52,46%	32,41%	3.702	3.006	23,15%	95	94	68	1,06%	39,71%	243	281	-13,52%	3.945	3.287	20,02%	2,20%
SALTA	1.070	860	888	24,42%	20,50%	3.501	3.264	7,26%	88	78	32	12,82%	175,00%	224	226	-0,88%	3.725	3.490	6,73%	2,07%
NEUQUEN	1.028	759	913	35,44%	12,60%	3.524	3.205	9,95%	39	34	35	14,71%	11,43%	127	168	-24,40%	3.651	3.373	8,24%	2,03%
CHACO	783	866	744	-9,58%	5,24%	3.075	3.430	-10,35%	56	44	25	27,27%	124,00%	153	168	-8,93%	3.228	3.598	-10,28%	1,80%
SANTA CRUZ	780	694	625	12,39%	24,80%	2.718	2.748	-1,09%	19	30	18	-36,67%	5,56%	66	121	-45,45%	2.784	2.869	-2,96%	1,55%
RIO NEGRO	798	560	679	42,50%	17,53%	2.610	2.059	26,76%	24	13	18	84,62%	33,33%	60	69	-13,04%	2.670	2.128	25,47%	1,49%
MISIONES	665	461	494	44,25%	34,62%	2.350	1.853	26,82%	22	21	15	4,76%	46,67%	67	59	13,56%	2.417	1.912	26,41%	1,34%
JUJUY	674	446	541	51,12%	24,58%	2.193	1.648	33,07%	84	46	32	82,61%	162,50%	186	149	24,83%	2.379	1.797	32,39%	1,32%
SAN JUAN	622	474	459	31,22%	35,51%	1.937	1.639	18,18%	31	17	15	82,35%	106,67%	89	72	23,61%	2.026	1.711	18,41%	1,13%
LA PAMPA	549	425	447	29,18%	22,82%	1.831	1.661	10,23%	20	17	8	17,65%	150,00%	44	56	-21,43%	1.875	1.717	9,20%	1,04%
SANTIAGO DEL ESTERO	566	356	430	58,99%	31,63%	1.813	1.558	16,37%	34	16	9	112,50%	277,78%	59	64	-7,81%	1.872	1.622	15,41%	1,04%
FORMOSA	548	329	374	66,57%	46,52%	1.712	1.357	26,16%	21	22	15	-4,55%	40,00%	53	61	-13,11%	1.765	1.418	24,47%	0,98%
TIERRA DEL FUEGO	490	346	414	41,62%	18,36%	1.478	1.207	22,45%	32	9	6	255,56%	433,33%	47	44	6,82%	1.525	1.251	21,90%	0,85%
SAN LUIS	442	328	365	34,76%	21,10%	1.464	1.211	20,89%	9	6	6	50,00%	50,00%	22	32	-31,25%	1.486	1.243	19,55%	0,83%
CATAMARCA	342	276	270	23,91%	26,67%	1.190	1.143	4,11%	2	5	7	-60,00%	-71,43%	14	42	-66,67%	1.204	1.185	1,60%	0,67%
LA RIOJA	404	243	249	66,26%	62,25%	1.165	925	25,95%	4	8	11	-50,00%	-63,64%	23	27	-14,81%	1.188	952	24,79%	0,66%



Patentamientos por Provincias y Tipos -

