



Patentamientos por Marcas - Mercado Total

	jun/09(a)	may/09(b)	jun/08(c)	jun/07(d)	Var a-b	Var a-c	Var a-d	Ac. 09	Ac. 08	Var 09-08
Automovil	33.783	31.551	36.645	31.588	7,07%	-7,81%	6,95%	216.903	253.131	-14,31%
Comercial Liviano	8.161	6.978	9.474	7.642	16,95%	-13,86%	6,79%	50.370	65.128	-22,66%
Comercial Pesado	1.142	947	1.852	1.766	20,59%	-38,34%	-35,33%	7.107	12.479	-43,05%
Otros Pesados	716	669	1.111	1.143	7,03%	-35,55%	-37,36%	4.402	7.867	-44,04%
Total	43.802	40.145	49.082	42.139	9,11%	-10,76%	3,95%	278.782	338.605	-17,67%
Prom. diario	2.086	2.113	2.454	2.107				2.323	2.753	
Dias habiles	21	19	20	20				120	123	

Patentamientos por origen		
	09-Jun	Ac. 09
Importados	0	139.491
Nacionales	0	95.492



■ Importados ■ Nacionales

Patentamientos Mensuales

	ene	feb	mar	abr	may	jun	jul	ago	sep	oct	nov	dic
2009	73.928	39.075	41.303	40.529	40.148	43.802						
2008	85.811	46.477	44.277	56.149	56.809	49.082	58.414	51.110	56.197	51.036	35.528	19.891
Var% 09-08	-13,85%	-15,93%	-6,72%	-27,82%	-29,33%	-10,76%	-100,00%	-100,00%	-100,00%	-100,00%	-100,00%	-100,00%
2007	82.552	38.841	47.379	41.626	47.231	42.139	50.182	54.285	48.857	49.497	40.640	24.528
2006	65.984	32.425	40.400	34.249	38.284	36.566	36.948	39.123	39.641	36.009	33.252	17.725

Patentamientos por Marcas - Totales

Marca	2009		2009		2008		2008		Var				
	ene - jun	Part %	ene - jun	Part %	ene - jun	Part %	2009-2008						
Volkswagen	7.891	18,32%	9.488	19,78%	7.671	19,44%	-16,83%	2,87%	51.847	18,90%	58.412	17,66%	-11,24%
Chevrolet	6.066	14,08%	6.707	13,98%	5.780	14,64%	-9,56%	4,95%	38.697	14,11%	47.307	14,30%	-18,20%
Ford	6.226	14,45%	5.701	11,88%	4.775	12,10%	9,21%	30,39%	36.127	13,17%	40.941	12,38%	-11,76%
Renault	5.187	12,04%	4.598	9,59%	4.957	12,56%	12,81%	4,64%	32.740	11,93%	39.966	12,08%	-18,08%
Fiat	4.299	9,98%	5.240	10,92%	3.938	9,98%	-17,96%	9,17%	27.010	9,85%	35.830	10,83%	-24,62%
Peugeot	4.222	9,80%	5.309	11,07%	4.274	10,83%	-20,47%	-1,22%	26.522	9,67%	34.476	10,42%	-23,07%
Toyota	2.729	6,34%	2.613	5,45%	2.198	5,57%	4,44%	24,16%	16.949	6,18%	16.617	5,02%	2,00%
Citroen	1.992	4,62%	1.547	3,22%	1.653	4,19%	28,77%	20,51%	12.009	4,38%	13.706	4,14%	-12,38%
Honda	881	2,05%	1.649	3,44%	1.071	2,71%	-46,57%	-17,74%	8.848	3,23%	10.821	3,27%	-18,23%
Mercedes Benz	886	2,06%	1.095	2,28%	770	1,95%	-19,09%	15,06%	5.792	2,11%	8.023	2,43%	-27,81%
Suzuki	609	1,41%	848	1,77%	516	1,31%	-28,18%	18,02%	3.465	1,26%	4.603	1,39%	-24,72%
Nissan	281	0,65%	539	1,12%	296	0,75%	-47,87%	-5,07%	2.169	0,79%	3.512	1,06%	-38,24%
Hyundai	264	0,61%	426	0,89%	243	0,62%	-38,03%	8,64%	1.949	0,71%	2.375	0,72%	-17,94%
Audi	212	0,49%	237	0,49%	196	0,50%	-10,55%	8,16%	1.674	0,61%	1.895	0,57%	-11,66%
BMW	166	0,39%	193	0,40%	171	0,43%	-13,99%	-2,92%	1.209	0,44%	1.646	0,50%	-26,55%
Kia	169	0,39%	310	0,65%	158	0,40%	-45,48%	6,96%	1.143	0,42%	1.727	0,52%	-33,82%
Iveco	185	0,43%	431	0,90%	180	0,46%	-57,08%	2,78%	1.133	0,41%	2.510	0,76%	-54,86%
Dodge	74	0,17%	130	0,27%	61	0,15%	-43,08%	21,31%	714	0,26%	553	0,17%	29,11%
Chery	162	0,38%		0,00%	112	0,28%	N/D	44,64%	629	0,23%		0,00%	N/D
Scania	66	0,15%	132	0,28%	56	0,14%	-50,00%	17,86%	597	0,22%	870	0,26%	-31,38%
Jeep	87	0,20%	114	0,24%	102	0,26%	-23,68%	-14,71%	584	0,21%	937	0,28%	-37,67%
Chrysler	108	0,25%	191	0,40%	60	0,15%	-43,46%	80,00%	571	0,21%	810	0,24%	-29,51%
Mitsubishi	62	0,14%	159	0,33%	46	0,12%	-61,01%	34,78%	396	0,14%	1.021	0,31%	-61,21%
Volvo	41	0,10%	90	0,19%	41	0,10%	-54,44%	0,00%	347	0,13%	667	0,20%	-47,98%
Agrale	43	0,10%	50	0,10%	47	0,12%	-14,00%	-8,51%	340	0,12%	288	0,09%	18,06%
Seat	42	0,10%	46	0,10%	20	0,05%	-8,70%	110,00%	270	0,10%	199	0,06%	35,68%
Mini	31	0,07%	31	0,06%	23	0,06%	0,00%	34,78%	193	0,07%	244	0,07%	-20,90%
Subaru	32	0,07%	29	0,06%	33	0,08%	10,34%	-3,03%	186	0,07%	297	0,09%	-37,37%
Puma de Tat	44	0,10%	25	0,05%	2	0,01%	76,00%	2100,00%	108	0,04%	187	0,06%	-42,25%
Land Rover	8	0,02%	29	0,06%	6	0,02%	-72,41%	33,33%	53	0,02%	136	0,04%	-61,03%
Porsche	4	0,01%	11	0,02%	5	0,01%	-63,64%	-20,00%	41	0,01%	119	0,04%	-65,55%
Mack		0,00%		0,00%	4	0,01%	N/D	-100,00%	8	0,00%		0,00%	N/D
Alfa Romeo	3	0,01%	1	0,00%		0,00%	200,00%	N/D	3	0,00%	24	0,01%	-87,50%
Ferrari		0,00%		0,00%	1	0,00%	N/D	-100,00%	3	0,00%	1	0,00%	200,00%
Jaguar	2	0,00%		0,00%	1	0,00%	N/D	100,00%	3	0,00%	1	0,00%	200,00%
Hummer	1	0,00%	1	0,00%		0,00%	0,00%	N/D	1	0,00%	2	0,00%	-50,00%
Lexus		0,00%		0,00%	1	0,00%	N/D	-100,00%	1	0,00%		0,00%	N/D
Lamborghini		0,00%		0,00%		0,00%	N/D	N/D		0,00%	1	0,00%	-100,00%
Total	43.075		47.970		39.468				274.331		330.724		

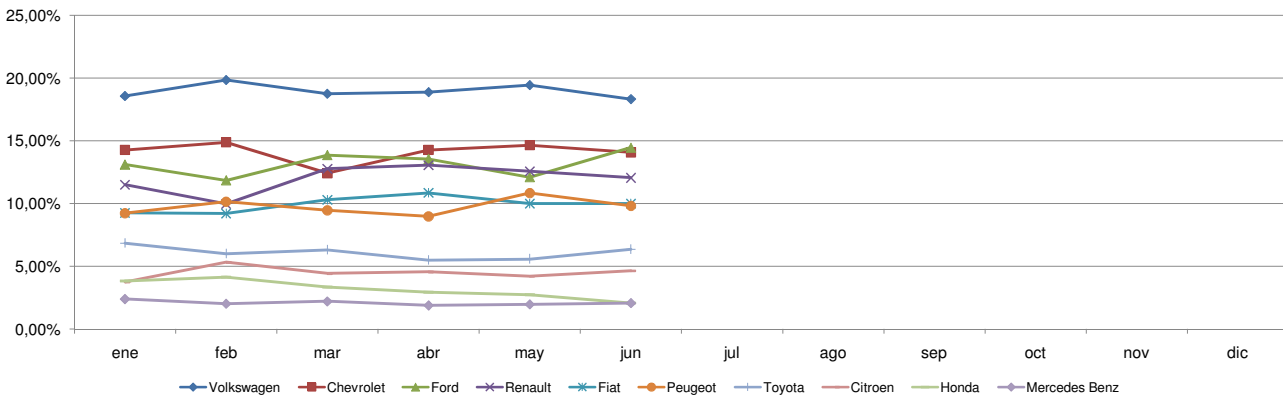


Patentamientos por Marcas - Mercado Total

Patentamientos por Marcas - Autos + Livianos								2009	2009	2008	2008	Var	
Marca	jun/09(a)	Part %	jun/08(c)	Part %	may/09(e)	Part %	Var a-c	Var a-e	ene - jun	Part %	ene - jun	Part %	2009-2008
Volkswagen	7.817	18,64%	9.271	20,10%	7.579	19,67%	-15,68%	3,14%	51.215	19,16%	56.823	17,85%	-9,87%
Chevrolet	6.066	14,46%	6.707	14,54%	5.780	15,00%	-9,56%	4,95%	38.697	14,48%	47.307	14,86%	-18,20%
Ford	6.013	14,34%	5.342	11,58%	4.594	11,92%	12,56%	30,89%	34.895	13,06%	38.413	12,07%	-9,16%
Renault	5.150	12,28%	4.546	9,86%	4.945	12,83%	13,29%	4,15%	32.623	12,21%	39.624	12,45%	-17,67%
Fiat	4.297	10,24%	5.240	11,36%	3.938	10,22%	-18,00%	9,12%	27.008	10,11%	35.830	11,26%	-24,62%
Peugeot	4.222	10,07%	5.309	11,51%	4.274	11,09%	-20,47%	-1,22%	26.522	9,92%	34.476	10,83%	-23,07%
Toyota	2.729	6,51%	2.613	5,67%	2.198	5,70%	4,44%	24,16%	16.949	6,34%	16.617	5,22%	2,00%
Citroen	1.992	4,75%	1.547	3,35%	1.653	4,29%	28,77%	20,51%	12.009	4,49%	13.706	4,31%	-12,38%
Honda	881	2,10%	1.649	3,58%	1.071	2,78%	-46,57%	-17,74%	8.848	3,31%	10.821	3,40%	-18,23%
Suzuki	609	1,45%	848	1,84%	516	1,34%	-28,18%	18,02%	3.465	1,30%	4.603	1,45%	-24,72%
Mercedes Benz	391	0,93%	463	1,00%	375	0,97%	-15,55%	4,27%	2.788	1,04%	3.600	1,13%	-22,56%
Nissan	281	0,67%	539	1,17%	296	0,77%	-47,87%	-5,07%	2.169	0,81%	3.512	1,10%	-38,24%
Hyundai	253	0,60%	402	0,87%	224	0,58%	-37,06%	12,95%	1.864	0,70%	2.297	0,72%	-18,85%
Audi	212	0,51%	237	0,51%	196	0,51%	-10,55%	8,16%	1.674	0,63%	1.895	0,60%	-11,66%
BMW	166	0,40%	193	0,42%	171	0,44%	-13,99%	-2,92%	1.209	0,45%	1.646	0,52%	-26,55%
Kia	169	0,40%	310	0,67%	158	0,41%	-45,48%	6,96%	1.143	0,43%	1.727	0,54%	-33,82%
Dodge	74	0,18%	130	0,28%	61	0,16%	-43,08%	21,31%	714	0,27%	553	0,17%	29,11%
Chery	162	0,39%		0,00%	112	0,29%	N/D	44,64%	629	0,24%		0,00%	N/D
Jeep	87	0,21%	114	0,25%	102	0,26%	-23,68%	-14,71%	584	0,22%	937	0,29%	-37,67%
Chrysler	108	0,26%	191	0,41%	60	0,16%	-43,46%	80,00%	571	0,21%	810	0,25%	-29,51%
Iveco	58	0,14%	129	0,28%	65	0,17%	-55,04%	-10,77%	406	0,15%	744	0,23%	-45,43%
Mitsubishi	62	0,15%	159	0,34%	46	0,12%	-61,01%	34,78%	396	0,15%	1.021	0,32%	-61,21%
Seat	42	0,10%	46	0,10%	20	0,05%	-8,70%	110,00%	270	0,10%	199	0,06%	35,68%
Mini	31	0,07%	31	0,07%	23	0,06%	0,00%	34,78%	193	0,07%	244	0,08%	-20,90%
Subaru	32	0,08%	29	0,06%	33	0,09%	10,34%	-3,03%	186	0,07%	297	0,09%	-37,37%
Volvo	20	0,05%	32	0,07%	24	0,06%	-37,50%	-16,67%	135	0,05%	269	0,08%	-49,81%
Land Rover	8	0,02%	29	0,06%	6	0,02%	-72,41%	33,33%	53	0,02%	136	0,04%	-61,03%
Porsche	4	0,01%	11	0,02%	5	0,01%	-63,64%	-20,00%	41	0,02%	119	0,04%	-65,55%
Alfa Romeo	3	0,01%	1	0,00%		0,00%	200,00%	N/D	3	0,00%	24	0,01%	-87,50%
Ferrari		0,00%		0,00%	1	0,00%	N/D	-100,00%	3	0,00%	1	0,00%	200,00%
Jaguar	2	0,00%		0,00%	1	0,00%	N/D	100,00%	3	0,00%	1	0,00%	200,00%
Agrale		0,00%		0,00%		0,00%	N/D	N/D	1	0,00%		0,00%	N/D
Hummer	1	0,00%	1	0,00%		0,00%	0,00%	N/D	1	0,00%	2	0,00%	-50,00%
Lexus		0,00%		0,00%	1	0,00%	N/D	-100,00%	1	0,00%		0,00%	N/D
Puma de Tat	1	0,00%		0,00%		0,00%	N/D	N/D	1	0,00%	4	0,00%	-75,00%
Lamborghini		0,00%		0,00%		0,00%	N/D	N/D		0,00%	1	0,00%	-100,00%
Total	41.943		46.119		38.528				267.269		318.259		

Patentamientos por Marcas - Camiones + Buses								2009	2009	2008	2008	Var	
Marca	jun/09(a)	Part %	jun/08(c)	Part %	may/09(e)	Part %	Var a-c	Var a-e	ene - jun	Part %	ene - jun	Part %	2009-2008
Mercedes Benz	495	43,73%	632	34,14%	395	42,02%	-21,68%	25,32%	3.004	42,54%	4.423	35,48%	-32,08%
Ford	213	18,82%	359	19,39%	181	19,26%	-40,67%	17,68%	1.232	17,45%	2.528	20,28%	-51,27%
Iveco	127	11,22%	302	16,32%	115	12,23%	-57,95%	10,43%	727	10,29%	1.766	14,17%	-58,83%
Volkswagen	74	6,54%	217	11,72%	92	9,79%	-65,90%	-19,57%	632	8,95%	1.589	12,75%	-60,23%
Scania	66	5,83%	132	7,13%	56	5,96%	-50,00%	17,86%	597	8,45%	870	6,98%	-31,38%
Agrale	43	3,80%	50	2,70%	47	5,00%	-14,00%	-8,51%	339	4,80%	288	2,31%	17,71%
Volvo	21	1,86%	58	3,13%	17	1,81%	-63,79%	23,53%	212	3,00%	398	3,19%	-46,73%
Renault	37	3,27%	52	2,81%	12	1,28%	-28,85%	208,33%	117	1,66%	342	2,74%	-65,79%
Puma de Tat	43	3,80%	25	1,35%	2	0,21%	72,00%	2050,00%	107	1,52%	183	1,47%	-41,53%
Hyundai	11	0,97%	24	1,30%	19	2,02%	-54,17%	-42,11%	85	1,20%	78	0,63%	8,97%
Mack		0,00%		0,00%	4	0,43%	N/D	-100,00%	8	0,11%		0,00%	N/D
Fiat	2	0,18%		0,00%		0,00%	N/D	N/D	2	0,03%		0,00%	N/D
Total	1.132		1.851		940				7.062		12.465		

Participacion por Marcas - Evolucion Mensual

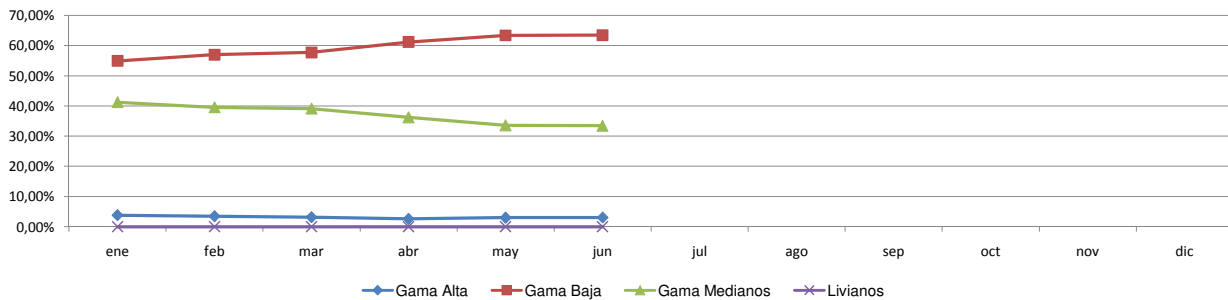




Patentamientos por Ranking de Automoviles - Mercado Total

Rank.	Ranking Por Modelos - Automoviles										
	Modelo	jun/09 (a)	jun/08 (b)	may/09 (c)	Var a-b	Var a-c	Ac. 09	Part %	Ac. 08	Part %	Var 09-08
1	Chevrolet CORSA	2.683	2.651	2.713	1,21%	-1,11%	14.886	6,86%	19.425	7,67%	-23,37%
2	Peugeot 207 COMPACT	2.140		2.021	N/D	5,89%	13.296	6,13%		0,00%	N/D
3	Volkswagen GOL TREND	1.761		1.891	N/D	-6,87%	11.877	5,48%		0,00%	N/D
4	Ford ECOSPORT	1.616	1.398	1.309	15,59%	23,45%	9.640	4,44%	9.701	3,83%	-0,63%
5	Volkswagen GOL	1.395	3.888	1.321	-64,12%	5,60%	8.903	4,10%	22.604	8,93%	-60,61%
6	Volkswagen SURAN	1.235	1.239	1.206	-0,32%	2,40%	8.290	3,82%	8.862	3,50%	-6,45%
7	Renault CLIO	1.162	1.195	1.082	-2,76%	7,39%	8.114	3,74%	9.143	3,61%	-11,25%
8	Ford FIESTA	1.111	1.044	827	6,42%	34,34%	6.363	2,93%	7.375	2,91%	-13,72%
9	Fiat SIENA	1.089	1.088	855	0,09%	27,37%	5.989	2,76%	7.407	2,93%	-19,14%
10	Volkswagen BORA	780	1.114	604	-29,98%	29,14%	5.734	2,64%	6.008	2,37%	-4,56%
11	Ford KA	1.074	833	788	28,93%	36,29%	5.677	2,62%	4.555	1,80%	24,63%
12	Fiat PALIO	744	1.027	750	-27,56%	-0,80%	5.145	2,37%	6.536	2,58%	-21,28%
13	Peugeot 307	650	1.335	777	-51,31%	-16,34%	5.090	2,35%	10.178	4,02%	-49,99%
14	Citroen C4	734	666	636	10,21%	15,41%	5.026	2,32%	5.538	2,19%	-9,25%
15	Honda FIT	286	646	601	-55,73%	-52,41%	4.812	2,22%	4.680	1,85%	2,82%
16	Fiat UNO	635	951	670	-33,23%	-5,22%	4.557	2,10%	6.880	2,72%	-33,76%
17	Renault SANDERO	731	327	666	123,55%	9,76%	4.422	2,04%	2.683	1,06%	64,82%
18	Toyota COROLLA	683	769	619	-11,18%	10,34%	4.386	2,02%	3.697	1,46%	18,64%
19	Chevrolet ASTRA	360	863	319	-58,29%	12,85%	4.364	2,01%	6.083	2,40%	-28,26%
20	Volkswagen VOYAGE	776		797	N/D	-2,63%	4.359	2,01%		0,00%	N/D
21	Volkswagen FOX/CROSSFOX	604	1.208	568	-50,00%	6,34%	3.838	1,77%	7.473	2,95%	-48,64%
22	Ford FOCUS	617	660	410	-6,52%	50,49%	3.422	1,58%	5.679	2,24%	-39,74%
23	Chevrolet CORSA II	538	677	560	-20,53%	-3,93%	3.365	1,55%	4.941	1,95%	-31,90%
24	Chevrolet MERIVA	459	677	477	-32,20%	-3,77%	3.333	1,54%	4.559	1,80%	-26,89%
25	Ford FOCUS II	524		343	N/D	52,77%	3.000	1,38%		0,00%	N/D
26	Fiat PALIO WEEKEND	390	230	401	69,57%	-2,74%	2.847	1,31%	2.446	0,97%	16,39%
27	Renault KANGOO	361	540	409	-33,15%	-11,74%	2.782	1,28%	4.567	1,80%	-39,08%
28	Renault MEGANE II	502	331	467	51,66%	7,49%	2.742	1,26%	3.068	1,21%	-10,63%
29	Renault MEGANE	54	654	165	-91,74%	-67,27%	2.697	1,24%	6.613	2,61%	-59,22%
30	Chevrolet AVEO	520		290	N/D	79,31%	2.544	1,17%		0,00%	N/D
31	Renault SYMBOL	652		555	N/D	17,48%	2.496	1,15%		0,00%	N/D
32	Citroen C3	596	264	369	125,76%	61,52%	2.482	1,14%	3.192	1,26%	-22,24%
33	Volkswagen VENTO	439	413	427	6,30%	2,81%	2.468	1,14%	2.974	1,17%	-17,01%
34	Fiat PUNTO	422	633	351	-33,33%	20,23%	2.440	1,12%	4.666	1,84%	-47,71%
35	Peugeot 206	484	3.011	655	-83,93%	-26,11%	2.425	1,12%	17.431	6,89%	-86,09%
36	Chevrolet CORSA SW	497	427	365	16,39%	36,16%	2.214	1,02%	2.855	1,13%	-22,45%
37	Renault LOGAN	417	262	400	59,16%	4,25%	2.146	0,99%	3.056	1,21%	-29,78%
38	Chevrolet SPARK	138		248	N/D	-44,35%	2.095	0,97%		0,00%	N/D
39	Suzuki FUN	369	647	331	-42,97%	11,48%	1.869	0,86%	3.422	1,35%	-45,38%
40	Honda CIVIC	207	528	207	-60,80%	0,00%	1.858	0,86%	3.306	1,31%	-43,80%
41	Nissan TIIDA	200	248	219	-19,35%	-8,68%	1.551	0,72%	1.536	0,61%	0,98%
42	Volkswagen GOL COUNTRY	164	339	179	-51,62%	-8,38%	1.362	0,63%	2.013	0,80%	-32,34%
43	Citroen PICASSO	205	168	185	22,02%	10,81%	1.356	0,63%	1.431	0,57%	-5,24%
44	Chevrolet VECTRA	167	375	143	-55,47%	16,78%	1.338	0,62%	2.048	0,81%	-34,67%
45	Fiat IDEA	247	382	170	-35,34%	45,29%	1.215	0,56%	2.679	1,06%	-54,65%
46	Renault SCENIC	121	162	170	-25,31%	-28,82%	992	0,46%	1.483	0,59%	-33,11%
47	Citroen BERLINGO	170	190	142	-10,53%	19,72%	940	0,43%	1.616	0,64%	-41,83%
48	Peugeot PARTNER	173	200	100	-13,50%	73,00%	914	0,42%	1.715	0,68%	-46,71%
49	Mercedes Benz CLASE C	77	104	94	-25,96%	-18,09%	736	0,34%	932	0,37%	-21,03%
50	Audi A4	75	48	92	56,25%	-18,48%	726	0,33%	524	0,21%	38,55%
51	Otros	1.749	2.233	1.606	-21,67%	8,90%	11.778	5,43%	15.551	6,14%	-24,26%
Total		33.783	36.645	31.550			216.901	1	253.131		

Autos - Participacion por Segmento





Patentamientos por Ranking de Livianos y Pesados - Mercado Total

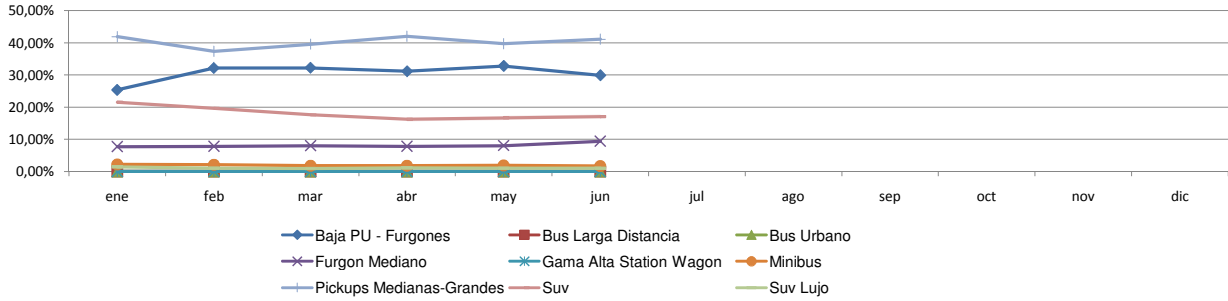
Rank.	Comercial Liviano										
	Modelo	jun/09 (a)	jun/08 (b)	may/09 (c)	Var a-b	Var a-c	Ac. 09	Part %	Ac. 08	Part %	Var 09-08
1	Toyota HILUX	1.779	1.522	1.340	16,89%	32,76%	10.328	20,51%	10.248	15,74%	0,78%
2	Ford RANGER	878	1.169	775	-24,89%	13,29%	5.166	10,26%	8.807	13,52%	-41,34%
3	Renault KANGOO FURGON	798	811	768	-1,60%	3,91%	4.382	8,70%	6.643	10,20%	-34,04%
4	Chevrolet S-10	501	652	501	-23,16%	0,00%	3.214	6,38%	5.067	7,78%	-36,57%
5	Peugeot PARTNER FURGON	440	566	407	-22,26%	8,11%	2.972	5,90%	3.664	5,63%	-18,89%
6	Fiat FIORINO	473	609	415	-22,33%	13,98%	2.699	5,36%	3.285	5,04%	-17,84%
7	Citroen BERLINGO FURGON	200	222	279	-9,91%	-28,32%	1.854	3,68%	1.762	2,71%	5,22%
8	Volkswagen SAVEIRO	346	341	273	1,47%	26,74%	1.822	3,62%	1.880	2,89%	-3,09%
9	Honda CRV	278	416	217	-33,17%	28,11%	1.764	3,50%	2.564	3,94%	-31,20%
10	Mercedes Benz SPRINTER	236	256	201	-7,81%	17,41%	1.459	2,90%	2.046	3,14%	-28,69%
11	Renault MASTER	297	206	204	44,17%	45,59%	1.323	2,63%	1.723	2,65%	-23,22%
12	Toyota HILUX SW4	140	177	142	-20,90%	-1,41%	1.179	2,34%	1.432	2,20%	-17,67%
13	Ford F 100	94	152	70	-38,16%	34,29%	941	1,87%	1.442	2,21%	-34,74%
14	Suzuki GRAND VITARA	150	109	82	37,61%	82,93%	906	1,80%	607	0,93%	49,26%
15	Toyota RAV 4	82	42	63	95,24%	30,16%	753	1,49%	315	0,48%	139,05%
16	Chery TIGGO	162		112	N/D	44,64%	629	1,25%		0,00%	N/D
17	Fiat STRADA	78	53	49	47,17%	59,18%	569	1,13%	579	0,89%	-1,73%
18	Hyundai TUCSON	58	156	72	-62,82%	-19,44%	521	1,03%	814	1,25%	-36,00%
19	Kia K2700	63	86	61	-26,74%	3,28%	449	0,89%	305	0,47%	47,21%
20	Chevrolet CAPTIVA	65	151	58	-56,95%	12,07%	444	0,88%	713	1,09%	-37,73%
21	Otros	1.042	1.778	889	-41,39%	17,21%	6.994	13,89%	11.232	17,25%	-37,73%
Total		8.160	9.474	6.978			50.368	1	65.128		

Rank.	Comercial Pesado										
	Modelo	jun/09 (a)	jun/08 (b)	may/09 (c)	Var a-b	Var a-c	Ac. 09	Part %	Ac. 08	Part %	Var 09-08
1	Mercedes Benz BMO 384	62		79	N/D	-21,52%	459	6,50%		0,00%	N/D
2	Mercedes Benz L-1624	78	33	63	136,36%	23,81%	440	6,23%	484	3,88%	-9,09%
3	Ford CARGO 1722 E	63	116	61	-45,69%	3,28%	393	5,56%	951	7,63%	-58,68%
4	Iveco 170 E	65	128	68	-49,22%	-4,41%	354	5,01%	666	5,34%	-46,85%
5	Mercedes Benz 1315	58	66	56	-12,12%	3,57%	318	4,50%	399	3,20%	-20,30%
6	Ford F-4000	55	78	45	-29,49%	22,22%	312	4,42%	551	4,42%	-43,38%
7	Mercedes Benz OF 1418	44	97	18	-54,64%	144,44%	272	3,85%	608	4,88%	-55,26%
8	Volkswagen 17220	22	67	36	-67,16%	-38,89%	210	2,97%	475	3,81%	-55,79%
9	Mercedes Benz ATEGO 1725	27	82	25	-67,07%	8,00%	204	2,89%	368	2,95%	-44,57%
10	Mercedes Benz LS 1634	42	65	19	-35,38%	121,05%	203	2,87%	690	5,54%	-70,58%
11	Agrale MT12	12	21	29	-42,86%	-58,62%	198	2,80%	140	1,12%	41,43%
12	Scania G340	18	32	19	-43,75%	-5,26%	191	2,70%	133	1,07%	43,61%
13	Mercedes Benz 710	20	36	18	-44,44%	11,11%	188	2,66%	306	2,45%	-38,56%
14	Mercedes Benz OF 1722	37	40	4	-7,50%	825,00%	127	1,80%	199	1,60%	-36,18%
15	Mercedes Benz O-500	21	30	11	-30,00%	90,91%	124	1,76%	210	1,68%	-40,95%
16	Ford CARGO 1517 E	26	17	15	52,94%	73,33%	118	1,67%	115	0,92%	2,61%
17	Ford CARGO 1832 E	28	57	20	-50,88%	40,00%	113	1,60%	408	3,27%	-72,30%
18	Mercedes Benz L1634	22	37	8	-40,54%	175,00%	112	1,59%	276	2,21%	-59,42%
19	Iveco 490 S	18	26	10	-30,77%	80,00%	107	1,52%	212	1,70%	-49,53%
20	Iveco 450 E	23	68	12	-66,18%	91,67%	102	1,44%	469	3,76%	-78,25%
21	Otros	391	755	324	-48,21%	20,68%	2.517	35,64%	4.805	38,55%	-47,62%
Total		1.132	1.851	940			7.062	1	12.465		

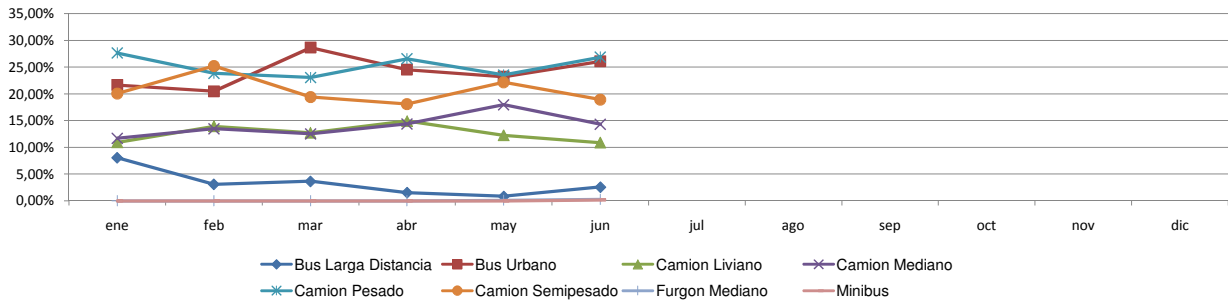


Patentamientos por Ranking de Livianos y Pesados - Mercado Total

Comercial Liviano



Comercial Pesado



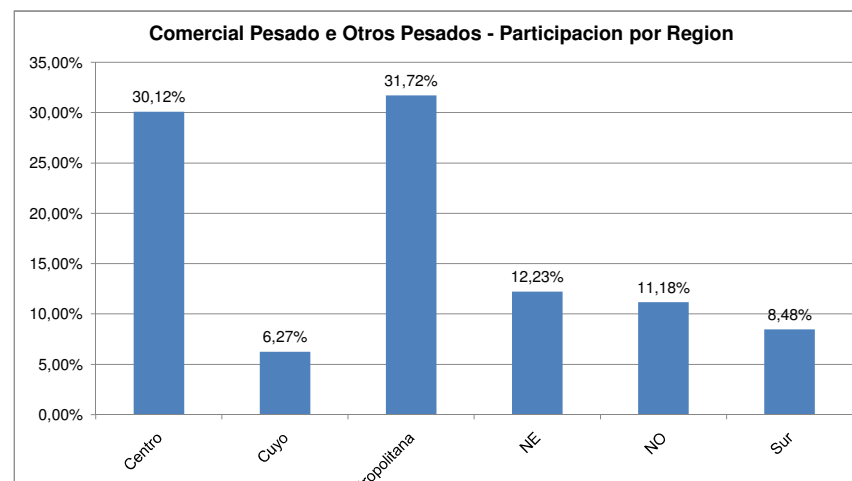
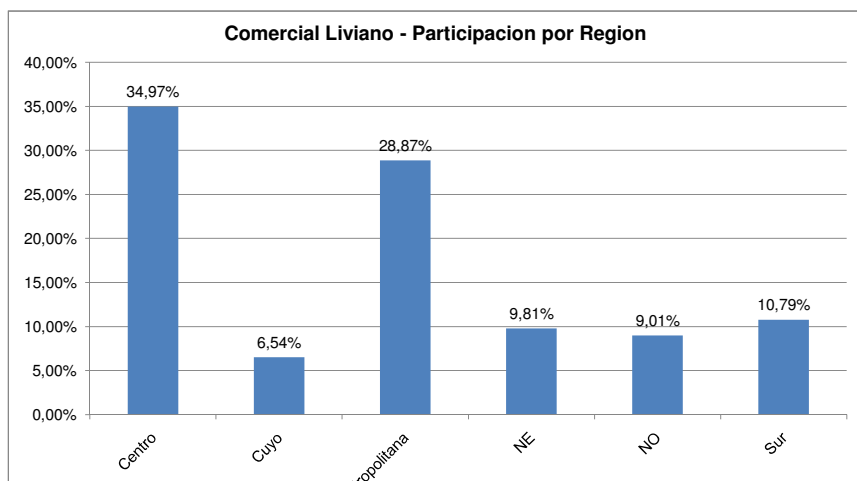
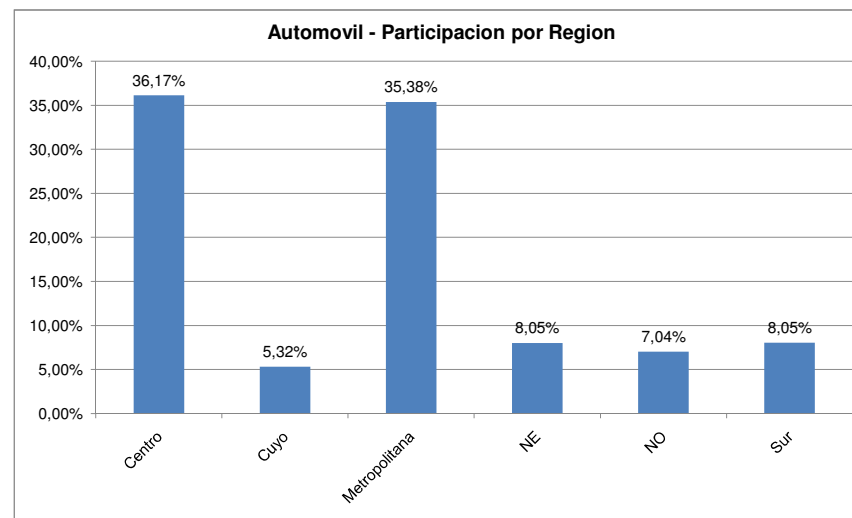
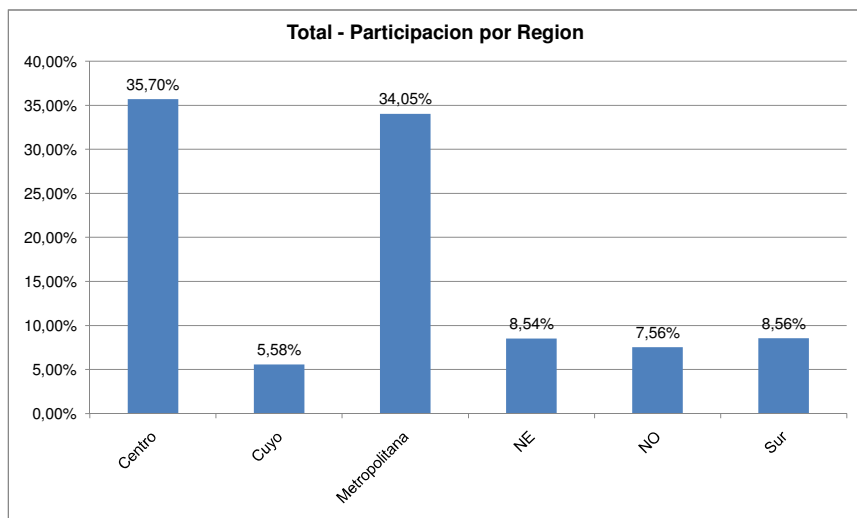


Patentamientos por Provincias y Tipos -

Distrito	Automovil+Comercial Liviano								Comercial Pesado+Otros Pesados								Mercado Total			
	jun/09 (a)	jun/08 (b)	may/09 (c)	Var a-b	Var a-c	Ac. 09	Ac. 08	Var 09-08	jun/09 (a)	jun/08 (b)	may/09 (c)	Var a-b	Var a-c	Ac. 09	Ac. 08	Var 09-08	Ac. 09	Ac. 08	Var 09-08	Part %
CAPITAL FEDERAL	7.473	8.918	6.933	-16,20%	7,79%	45.628	57.226	-20,27%	459	706	360	-34,99%	27,50%	2.586	4.767	-45,75%	48.214	61.993	-22,23%	17,29%
GRAN BUENOS AIRES	7.276	7.677	6.965	-5,22%	4,47%	45.658	50.695	-9,94%	191	270	147	-29,26%	29,93%	1.065	1.810	-41,16%	46.724	52.505	-11,01%	16,76%
BUENOS AIRES	6.474	7.165	5.991	-9,64%	8,06%	41.590	48.974	-15,08%	226	394	207	-42,64%	9,18%	1.382	2.661	-48,06%	42.973	51.635	-16,78%	15,41%
CORDOBA	4.855	4.749	4.082	2,23%	18,94%	28.949	34.204	-15,36%	139	275	145	-49,45%	-4,14%	1.031	1.974	-47,77%	29.980	36.178	-17,13%	10,75%
SANTA FE	3.680	3.949	3.307	-6,81%	11,28%	22.623	29.188	-22,49%	150	264	114	-43,18%	31,58%	951	2.050	-53,61%	23.574	31.238	-24,53%	8,46%
MENDOZA	1.615	1.755	1.448	-7,98%	11,53%	9.746	11.652	-16,36%	79	95	59	-16,84%	33,90%	510	850	-40,00%	10.257	12.502	-17,96%	3,68%
CHUBUT	891	1.065	900	-16,34%	-1,00%	6.656	7.610	-12,54%	40	79	53	-49,37%	-24,53%	295	631	-53,25%	6.951	8.241	-15,65%	2,49%
ENTRE RIOS	925	1.076	832	-14,03%	11,18%	6.354	7.809	-18,63%	61	96	61	-36,46%	0,00%	404	654	-38,23%	6.758	8.463	-20,15%	2,42%
CHACO	800	787	625	1,65%	28,00%	5.623	5.753	-2,26%	43	74	55	-41,89%	-21,82%	324	499	-35,07%	5.947	6.252	-4,88%	2,13%
SALTA	738	838	718	-11,93%	2,79%	5.463	6.439	-15,16%	74	115	72	-35,65%	2,78%	448	588	-23,81%	5.911	7.027	-15,88%	2,12%
NEUQUEN	808	1.108	760	-27,08%	6,32%	5.502	7.607	-27,67%	47	94	40	-50,00%	17,50%	302	460	-34,35%	5.804	8.067	-28,05%	2,08%
TUCUMAN	809	814	727	-0,61%	11,28%	5.246	6.290	-16,60%	46	77	52	-40,26%	-11,54%	327	452	-27,65%	5.573	6.742	-17,34%	2,00%
CORRIENTES	655	785	655	-16,56%	0,00%	5.064	5.784	-12,45%	67	102	49	-34,31%	36,73%	458	734	-37,60%	5.522	6.518	-15,28%	1,98%
SANTA CRUZ	674	808	640	-16,58%	5,31%	4.712	5.034	-6,40%	27	30	20	-10,00%	35,00%	193	263	-26,62%	4.905	5.297	-7,40%	1,76%
RIO NEGRO	644	711	611	-9,42%	5,40%	3.856	4.748	-18,79%	16	17	16	-5,88%	0,00%	112	153	-26,80%	3.968	4.901	-19,04%	1,42%
JUJUY	458	461	435	-0,65%	5,29%	2.987	3.362	-11,15%	56	72	49	-22,22%	14,29%	296	494	-40,08%	3.283	3.856	-14,86%	1,18%
MISIONES	469	550	356	-14,73%	31,74%	3.126	4.089	-23,55%	23	36	20	-36,11%	15,00%	127	219	-42,01%	3.253	4.308	-24,49%	1,17%
SAN JUAN	433	389	435	11,31%	-0,46%	2.918	3.114	-6,29%	21	45	13	-53,33%	61,54%	124	254	-51,18%	3.042	3.368	-9,68%	1,09%
LA PAMPA	384	513	431	-25,15%	-10,90%	2.899	3.878	-25,24%	12	16	20	-25,00%	-40,00%	102	163	-37,42%	3.001	4.041	-25,74%	1,08%
SANTIAGO DEL ESTERO	359	369	343	-2,71%	4,66%	2.612	3.025	-13,65%	28	22	9	27,27%	211,11%	114	173	-34,10%	2.726	3.198	-14,76%	0,98%
FORMOSA	319	290	272	10,00%	17,28%	2.224	2.281	-2,50%	18	8	6	125,00%	200,00%	94	114	-17,54%	2.318	2.395	-3,22%	0,83%
SAN LUIS	348	337	310	3,26%	12,26%	2.176	2.339	-6,97%	16	23	30	-30,43%	-46,67%	88	78	12,82%	2.264	2.417	-6,33%	0,81%
TIERRA DEL FUEGO	334	528	329	-36,74%	1,52%	2.167	3.457	-37,32%	9	38	10	-76,32%	-10,00%	74	197	-62,44%	2.241	3.654	-38,67%	0,80%
CATAMARCA	285	284	227	0,35%	25,55%	1.939	2.257	-14,09%	9	11	5	-18,18%	80,00%	61	64	-4,69%	2.000	2.321	-13,83%	0,72%
LA RIOJA	238	193	197	23,32%	20,81%	1.555	1.444	7,69%	1	4	4	-75,00%	-75,00%	41	44	-6,82%	1.596	1.488	7,26%	0,57%



Patentamientos por Provincias y Tipos -





06/2009

Informe confidencial para uso
exclusivo de los asociados

Patentamientos por Provincias y Tipos -

Meu

Meu