



Patentamientos por Marcas - Mercado Total

	sep/09(a)	ago/09(b)	sep/08(c)	sep/07(d)	Var a-b	Var a-c	Var a-d	Ac. 09	Ac. 08	Var 09-08
Automovil	35.895	33.534	41.522	36.552	7,04%	-13,55%	-1,80%	323.111	375.806	-14,02%
Comercial Liviano	7.661	7.167	11.205	8.996	6,89%	-31,63%	-14,84%	73.558	98.122	-25,03%
Comercial Pesado	1.205	1.130	2.191	2.027	6,64%	-45,00%	-40,55%	10.620	18.690	-43,18%
Otros Pesados	626	603	1.279	1.282	3,81%	-51,06%	-51,17%	6.261	11.707	-46,52%
Total	45.387	42.434	56.197	48.857	6,96%	-19,24%	-7,10%	413.550	504.325	-18,00%
Prom. diario	2.063	2.122	2.554	2.443				2.260	2.697	
Dias habiles	22	20	22	20				183	187	

Patentamientos por origen	
	09-Sep Ac. 09
Importados	0 217.383
Nacionales	0 150.780



■ Importados ■ Nacionales

Patentamientos Mensuales

	ene	feb	mar	abr	may	jun	jul	ago	sep	oct	nov	dic
2009	73.927	39.075	41.303	40.148	44.112	44.112	46.635	42.434	45.387			
2008	85.811	46.476	44.277	56.149	56.809	49.082	58.414	51.110	56.197	51.036	35.528	19.891
Var% 09-08	-13,85%	-15,92%	-6,72%	-27,82%	-29,33%	-10,13%	-20,16%	-16,98%	-19,24%	-100,00%	-100,00%	-100,00%
2007	82.552	38.841	47.379	41.626	47.231	42.139	50.182	54.285	48.857	49.497	40.640	24.528
2006	65.984	32.425	40.400	34.249	38.284	36.566	36.948	39.123	39.641	36.009	33.252	17.725

Patentamientos por Marcas - Totales

Marca	sep/09(a)		sep/08(c)		ago/09(e)		Var a-c	Var a-e	2009		2008		Var
	Part %	Part %	Part %	Part %	ene - sep	Part %			ene - sep	Part %			
Volkswagen	9.445	21,10%	11.325	20,62%	8.535	20,41%	-16,60%	10,66%	78.355	19,24%	91.010	18,48%	-13,91%
Chevrolet	6.167	13,78%	7.605	13,85%	6.209	14,85%	-18,91%	-0,68%	58.066	14,26%	69.826	14,17%	-16,84%
Ford	6.416	14,33%	6.651	12,11%	6.023	14,40%	-3,53%	6,52%	54.833	13,46%	61.086	12,40%	-10,24%
Renault	5.844	13,06%	6.667	12,14%	5.237	12,52%	-12,34%	11,59%	50.194	12,33%	57.915	11,76%	-13,33%
Fiat	4.281	9,56%	5.616	10,23%	4.127	9,87%	-23,77%	3,73%	40.030	9,83%	52.403	10,64%	-23,61%
Peugeot	3.682	8,23%	4.626	8,42%	3.422	8,18%	-20,41%	7,60%	37.599	9,23%	49.465	10,04%	-23,99%
Toyota	2.213	4,94%	2.855	5,20%	2.215	5,30%	-22,49%	-0,09%	24.200	5,94%	25.280	5,13%	-4,27%
Citroen	1.703	3,80%	1.592	2,90%	1.323	3,16%	6,97%	28,72%	16.704	4,10%	18.507	3,76%	-9,74%
Honda	1.250	2,79%	1.670	3,04%	1.137	2,72%	-25,15%	9,94%	12.496	3,07%	16.114	3,27%	-22,45%
Mercedes Benz	806	1,80%	1.407	2,56%	886	2,12%	-42,71%	-9,03%	8.478	2,08%	12.113	2,46%	-30,01%
Suzuki	563	1,26%	905	1,65%	674	1,61%	-37,79%	-16,47%	5.343	1,31%	7.482	1,52%	-28,59%
Nissan	321	0,72%	676	1,23%	356	0,85%	-52,51%	-9,83%	3.206	0,79%	5.481	1,11%	-41,51%
Hyundai	351	0,78%	570	1,04%	229	0,55%	-38,42%	53,28%	2.812	0,69%	4.088	0,83%	-31,21%
Audi	220	0,49%	266	0,48%	190	0,45%	-17,29%	15,79%	2.305	0,57%	2.790	0,57%	-17,38%
BMW	240	0,54%	251	0,46%	203	0,49%	-4,38%	18,23%	1.836	0,45%	2.431	0,49%	-24,48%
Iveco	284	0,63%	414	0,75%	186	0,44%	-31,40%	52,69%	1.757	0,43%	3.718	0,75%	-52,74%
Kia	178	0,40%	482	0,88%	204	0,49%	-63,07%	-12,75%	1.704	0,42%	2.933	0,60%	-41,90%
Dodge	119	0,27%	135	0,25%	93	0,22%	-11,85%	27,96%	1.055	0,26%	906	0,18%	16,45%
Chery	141	0,32%	77	0,14%	108	0,26%	83,12%	30,56%	1.024	0,25%	183	0,04%	459,56%
Chrysler	94	0,21%	287	0,52%	65	0,16%	-67,25%	44,62%	826	0,20%	1.342	0,27%	-38,45%
Scania	68	0,15%	167	0,30%	52	0,12%	-59,28%	30,77%	767	0,19%	1.355	0,28%	-43,39%
Jeep	42	0,09%	142	0,26%	47	0,11%	-70,42%	-10,64%	747	0,18%	1.373	0,28%	-45,59%
Mitsubishi	64	0,14%	137	0,25%	47	0,11%	-53,28%	36,17%	560	0,14%	1.504	0,31%	-62,77%
Agrale	56	0,13%	70	0,13%	46	0,11%	-20,00%	21,74%	487	0,12%	490	0,10%	-0,61%
Seat	64	0,14%	73	0,13%	64	0,15%	-12,33%	0,00%	470	0,12%	374	0,08%	25,67%
Volvo	40	0,09%	97	0,18%	35	0,08%	-58,76%	14,29%	455	0,11%	983	0,20%	-53,71%
Mini	35	0,08%	41	0,07%	28	0,07%	-14,63%	25,00%	299	0,07%	378	0,08%	-20,90%
Subaru	21	0,05%	66	0,12%	33	0,08%	-68,18%	-36,36%	273	0,07%	455	0,09%	-40,00%
Puma de Tat	3	0,01%	22	0,04%	16	0,04%	-86,36%	-81,25%	135	0,03%	237	0,05%	-43,04%
Land Rover	17	0,04%	12	0,02%	11	0,03%	41,67%	54,55%	90	0,02%	179	0,04%	-49,72%
Porsche	15	0,03%	13	0,02%	9	0,02%	15,38%	66,67%	72	0,02%	163	0,03%	-55,83%
Materfer	1	0,00%		0,00%	6	0,01%	N/D	-83,33%	34	0,01%		0,00%	N/D
Alfa Romeo	14	0,03%		0,00%	2	0,00%	N/D	600,00%	20	0,00%	27	0,01%	-25,93%
Mack		0,00%		0,00%	1	0,00%	N/D	-100,00%	9	0,00%		0,00%	N/D
Ferrari	1	0,00%		0,00%		0,00%	N/D	N/D	5	0,00%	4	0,00%	25,00%
Jaguar		0,00%		0,00%		0,00%	N/D	N/D	4	0,00%	2	0,00%	100,00%
Lexus		0,00%		0,00%		0,00%	N/D	N/D	1	0,00%		0,00%	N/D
Hummer		0,00%		0,00%		0,00%	N/D	N/D		0,00%	2	0,00%	-100,00%
Lamborghini		0,00%		0,00%		0,00%	N/D	N/D		0,00%	1	0,00%	-100,00%
Total	44.759		54.917		41.819				407.251		492.600		

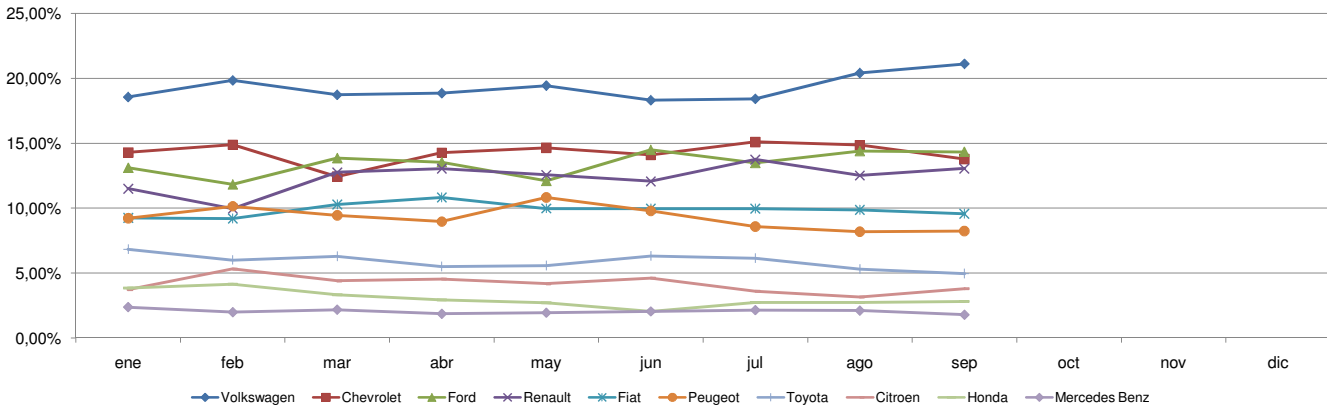


Patentamientos por Marcas - Mercado Total

Patentamientos por Marcas - Autos + Livianos								2009	2009	2008	2008	Var	
Marca	sep/09(a)	Part %	sep/08(c)	Part %	ago/09(e)	Part %	Var a-c	Var a-e	ene - sep	Part %	ene - sep	Part %	2009-2008
Volkswagen	9.342	21,45%	11.073	21,00%	8.421	20,69%	-15,63%	10,94%	77.425	19,52%	88.697	18,72%	-12,71%
Chevrolet	6.167	14,16%	7.605	14,42%	6.209	15,26%	-18,91%	-0,68%	58.066	14,64%	69.826	14,73%	-16,84%
Ford	6.170	14,17%	6.198	11,75%	5.800	14,25%	-0,45%	6,38%	52.901	13,34%	57.395	12,11%	-7,83%
Renault	5.811	13,34%	6.625	12,56%	5.204	12,79%	-12,29%	11,66%	49.969	12,60%	57.408	12,11%	-12,96%
Fiat	4.280	9,83%	5.616	10,65%	4.127	10,14%	-23,79%	3,71%	40.029	10,09%	52.403	11,06%	-23,61%
Peugeot	3.681	8,45%	4.626	8,77%	3.422	8,41%	-20,43%	7,57%	37.598	9,48%	49.465	10,44%	-23,99%
Toyota	2.213	5,08%	2.855	5,41%	2.215	5,44%	-22,49%	-0,09%	24.200	6,10%	25.280	5,33%	-4,27%
Citroen	1.703	3,91%	1.592	3,02%	1.323	3,25%	6,97%	28,72%	16.704	4,21%	18.507	3,91%	-9,74%
Honda	1.250	2,87%	1.670	3,17%	1.137	2,79%	-25,15%	9,94%	12.496	3,15%	16.114	3,40%	-22,45%
Suzuki	563	1,29%	905	1,72%	674	1,66%	-37,79%	-16,47%	5.343	1,35%	7.482	1,58%	-28,59%
Mercedes Benz	353	0,81%	622	1,18%	413	1,01%	-43,25%	-14,53%	3.943	0,99%	5.406	1,14%	-27,06%
Nissan	321	0,74%	676	1,28%	356	0,87%	-52,51%	-9,83%	3.206	0,81%	5.481	1,16%	-41,51%
Hyundai	334	0,77%	523	0,99%	213	0,52%	-36,14%	56,81%	2.681	0,68%	3.908	0,82%	-31,40%
Audi	220	0,51%	266	0,50%	190	0,47%	-17,29%	15,79%	2.305	0,58%	2.790	0,59%	-17,38%
BMW	240	0,55%	251	0,48%	203	0,50%	-4,38%	18,23%	1.836	0,46%	2.431	0,51%	-24,48%
Kia	178	0,41%	482	0,91%	204	0,50%	-63,07%	-12,75%	1.704	0,43%	2.933	0,62%	-41,90%
Dodge	119	0,27%	135	0,26%	93	0,23%	-11,85%	-70,42%	1.055	0,27%	906	0,19%	16,45%
Chery	141	0,32%	77	0,15%	108	0,27%	83,12%	30,56%	1.024	0,26%	183	0,04%	459,56%
Chrysler	94	0,22%	287	0,54%	65	0,16%	-67,25%	44,62%	826	0,21%	1.342	0,28%	-38,45%
Jeep	42	0,10%	142	0,27%	47	0,12%	-70,42%	-10,64%	747	0,19%	1.373	0,29%	-45,59%
Iveco	81	0,19%	119	0,23%	65	0,16%	-31,93%	24,62%	625	0,16%	1.124	0,24%	-44,40%
Mitsubishi	64	0,15%	137	0,26%	47	0,12%	-53,28%	36,17%	560	0,14%	1.504	0,32%	-62,77%
Seat	64	0,15%	73	0,14%	64	0,16%	-12,33%	0,00%	470	0,12%	374	0,08%	25,67%
Mini	35	0,08%	41	0,08%	28	0,07%	-14,63%	25,00%	299	0,08%	378	0,08%	-20,90%
Subaru	21	0,05%	66	0,13%	33	0,08%	-68,18%	-36,36%	273	0,07%	455	0,10%	-40,00%
Volvo	20	0,05%	39	0,07%	16	0,04%	-48,72%	25,00%	182	0,05%	384	0,08%	-52,60%
Land Rover	17	0,04%	12	0,02%	11	0,03%	41,67%	54,55%	90	0,02%	179	0,04%	-49,72%
Porsche	15	0,03%	13	0,02%	9	0,02%	15,38%	66,67%	72	0,02%	163	0,03%	-55,83%
Alfa Romeo	14	0,03%		0,00%	2	0,00%	N/D	600,00%	20	0,01%	27	0,01%	-25,93%
Ferrari	1	0,00%		0,00%		0,00%	N/D	N/D	5	0,00%	4	0,00%	25,00%
Jaguar		0,00%		0,00%		0,00%	N/D	N/D	4	0,00%	2	0,00%	100,00%
Agrale	1	0,00%	1	0,00%		0,00%	0,00%	N/D	2	0,00%	1	0,00%	100,00%
Lexus		0,00%		0,00%		0,00%	N/D	N/D	1	0,00%		0,00%	N/D
Hummer		0,00%		0,00%		0,00%	N/D	N/D		0,00%	2	0,00%	-100,00%
Lamborghini		0,00%		0,00%		0,00%	N/D	N/D		0,00%	1	0,00%	-100,00%
Total	43.555		52.727		40.699				396.661		473.928		

Patentamientos por Marcas - Camiones + Buses								2009	2009	2008	2008	Var	
Marca	sep/09(a)	Part %	sep/08(c)	Part %	ago/09(e)	Part %	Var a-c	Var a-e	ene - sep	Part %	ene - sep	Part %	2009-2008
Mercedes Benz	453	37,62%	785	35,84%	473	42,23%	-42,29%	-4,23%	4.535	42,82%	6.707	35,92%	-32,38%
Ford	246	20,43%	453	20,68%	223	19,91%	-45,70%	10,31%	1.932	18,24%	3.691	19,77%	-47,66%
Iveco	203	16,86%	295	13,47%	121	10,80%	-31,19%	67,77%	1.132	10,69%	2.594	13,89%	-56,36%
Volkswagen	103	8,55%	252	11,51%	114	10,18%	-59,13%	-9,65%	930	8,78%	2.313	12,39%	-59,79%
Scania	68	5,65%	167	7,63%	52	4,64%	-59,28%	30,77%	767	7,24%	1.355	7,26%	-43,39%
Agrale	55	4,57%	69	3,15%	46	4,11%	-20,29%	19,57%	485	4,58%	489	2,62%	-0,82%
Volvo	20	1,66%	58	2,65%	19	1,70%	-65,52%	5,26%	273	2,58%	599	3,21%	-54,42%
Renault	33	2,74%	42	1,92%	33	2,95%	-21,43%	0,00%	225	2,12%	507	2,72%	-55,62%
Puma de Tat	3	0,25%	22	1,00%	16	1,43%	-86,36%	-81,25%	135	1,27%	237	1,27%	-43,04%
Hyundai	17	1,41%	47	2,15%	16	1,43%	-63,83%	6,25%	131	1,24%	180	0,96%	-27,22%
Materfer	1	0,08%		0,00%	6	0,54%	N/D	-83,33%	34	0,32%		0,00%	N/D
Mack		0,00%		0,00%	1	0,09%	N/D	-100,00%	9	0,08%		0,00%	N/D
Fiat	1	0,08%		0,00%		0,00%	N/D	N/D	1	0,01%		0,00%	N/D
Peugeot	1	0,08%		0,00%		0,00%	N/D	N/D	1	0,01%		0,00%	N/D
Total	1.204		2.190		1.120				10.590		18.672		

Participacion por Marcas - Evolucion Mensual

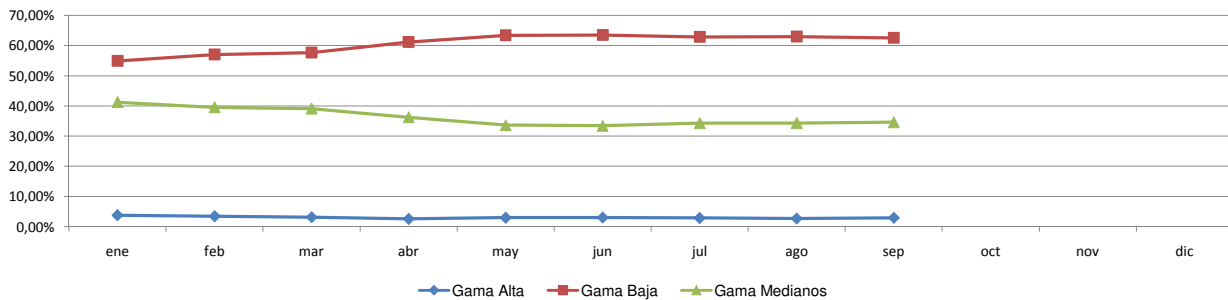




Patentamientos por Ranking de Automoviles - Mercado Total

Rank.	Ranking Por Modelos - Automoviles										
	Modelo	sep/09 (a)	sep/08 (b)	ago/09 (c)	Var a-b	Var a-c	Ac. 09	Part %	Ac. 08	Part %	Var 09-08
1	Chevrolet CORSA	2.560	3.006	2.557	-14,84%	0,12%	22.943	7,10%	28.204	7,50%	-18,65%
2	Peugeot 207 COMPACT	2.123	165	2.101	1186,67%	1,05%	19.683	6,09%	165	0,04%	11829,09%
3	Volkswagen GOL TREND	1.525	840	1.674	81,55%	-8,90%	17.033	5,27%	841	0,22%	1925,33%
4	Volkswagen GOL	2.154	4.188	1.794	-48,57%	20,07%	14.465	4,48%	35.133	9,35%	-58,83%
5	Ford ECOSPORT	1.495	1.519	1.506	-1,58%	-0,73%	14.315	4,43%	14.339	3,82%	-0,17%
6	Volkswagen SURAN	1.476	1.374	1.268	7,42%	16,40%	12.284	3,80%	12.992	3,46%	-5,45%
7	Renault CLIO	940	1.917	1.113	-50,97%	-15,54%	11.655	3,61%	14.096	3,75%	-17,32%
8	Ford FIESTA	955	1.436	872	-33,50%	9,52%	9.245	2,86%	11.437	3,04%	-19,17%
9	Ford KA	1.265	835	1.037	51,50%	21,99%	9.148	2,83%	7.609	2,02%	20,23%
10	Fiat SIENA	959	1.312	906	-26,91%	5,85%	8.808	2,73%	11.300	3,01%	-22,05%
11	Volkswagen BORA	1.072	1.455	967	-26,32%	10,86%	8.557	2,65%	10.370	2,76%	-17,48%
12	Renault SANDERO	1.539	319	1.083	382,45%	42,11%	8.229	2,55%	3.646	0,97%	125,70%
13	Fiat PALIO	696	1.202	719	-42,10%	-3,20%	7.444	2,30%	10.038	2,67%	-25,84%
14	Volkswagen VOYAGE	792		906	N/D	-12,58%	7.001	2,17%		0,00%	N/D
15	Citroen C4	644	505	610	27,52%	5,57%	6.977	2,16%	7.264	1,93%	-3,95%
16	Peugeot 307	580	1.338	561	-56,65%	3,39%	6.932	2,15%	13.868	3,69%	-50,01%
17	Honda FIT	716	592	674	20,95%	6,23%	6.874	2,13%	6.680	1,78%	2,90%
18	Fiat UNO	688	953	596	-27,81%	15,44%	6.630	2,05%	9.737	2,59%	-31,91%
19	Volkswagen FOX/CROSSFOX	1.250	1.121	648	11,51%	92,90%	6.456	2,00%	11.052	2,94%	-41,59%
20	Toyota COROLLA	546	799	516	-31,66%	5,81%	6.096	1,89%	6.167	1,64%	-1,15%
21	Chevrolet ASTRA	752	1.046	478	-28,11%	57,32%	6.012	1,86%	9.435	2,51%	-36,28%
22	Ford FOCUS	733	717	788	2,23%	-6,98%	5.675	1,76%	8.014	2,13%	-29,19%
23	Chevrolet MERIVA	599	532	468	12,59%	27,99%	5.005	1,55%	6.306	1,68%	-20,63%
24	Chevrolet CORSA II	431	1.068	588	-59,64%	-26,70%	4.973	1,54%	7.596	2,02%	-34,53%
25	Ford FOCUS II	447	114	524	292,11%	-14,69%	4.545	1,41%	139	0,04%	3169,78%
26	Chevrolet AVEO	475		745	N/D	-36,24%	4.327	1,34%		0,00%	N/D
27	Renault KANGOO	486	707	527	-31,26%	-7,78%	4.268	1,32%	6.622	1,76%	-35,55%
28	Fiat PALIO WEEKEND	455	384	477	18,49%	-4,61%	4.188	1,30%	3.106	0,83%	34,84%
29	Renault MEGANE II	367	620	354	-40,81%	3,67%	4.125	1,28%	4.478	1,19%	-7,88%
30	Renault SYMBOL	517		530	N/D	-2,45%	4.089	1,27%		0,00%	N/D
31	Renault LOGAN	727	356	427	104,21%	70,26%	3.853	1,19%	4.085	1,09%	-5,68%
32	Volkswagen VENTO	482	445	422	8,31%	14,22%	3.740	1,16%	4.557	1,21%	-17,93%
33	Fiat PUNTO	461	542	411	-14,94%	12,17%	3.691	1,14%	6.468	1,72%	-42,93%
34	Citroen C3	454	197	256	130,46%	77,34%	3.604	1,12%	3.784	1,01%	-4,76%
35	Chevrolet CORSA SW	318	387	441	-17,83%	-27,89%	3.444	1,07%	4.180	1,11%	-17,61%
36	Suzuki FUN	464	689	532	-32,66%	-12,78%	3.301	1,02%	5.701	1,52%	-42,10%
37	Peugeot 206	189	1.756	179	-89,24%	5,59%	3.112	0,96%	25.037	6,66%	-87,57%
38	Renault MEGANE	20	1.137	44	-98,24%	-54,55%	2.814	0,87%	9.627	2,56%	-70,77%
39	Honda CIVIC	238	517	192	-53,97%	23,96%	2.545	0,79%	4.847	1,29%	-47,49%
40	Nissan TIIDA	280	428	309	-34,58%	-9,39%	2.411	0,75%	2.612	0,70%	-7,70%
41	Chevrolet SPARK	80	20	82	300,00%	-2,44%	2.366	0,73%	20	0,01%	11730,00%
42	Chevrolet VECTRA	243	311	249	-21,86%	-2,41%	2.133	0,66%	2.931	0,78%	-27,23%
43	Volkswagen GOL COUNTRY	162	432	192	-62,50%	-15,63%	1.892	0,59%	3.289	0,88%	-42,47%
44	Citroen PICASSO	205	162	88	26,54%	132,95%	1.766	0,55%	2.027	0,54%	-12,88%
45	Fiat IDEA	135	326	139	-58,59%	-2,88%	1.692	0,52%	3.713	0,99%	-54,43%
46	Citroen BERLINGO	83	226	114	-63,27%	-27,19%	1.322	0,41%	2.266	0,60%	-41,66%
47	Renault SCENIC	85	165	74	-48,48%	14,86%	1.246	0,39%	2.003	0,53%	-37,79%
48	Peugeot PARTNER	146	211	18	-30,81%	711,11%	1.154	0,36%	2.357	0,63%	-51,04%
49	Fiat LINEA	151		210	N/D	-28,10%	1.127	0,35%		0,00%	N/D
50	Chevrolet ZAFIRA	86	169	86	-49,11%	0,00%	1.030	0,32%	1.692	0,45%	-39,13%
51	Otros	1.648	2.982	1.480	-44,74%	11,35%	16.880	5,22%	23.976	6,38%	-29,60%
Total		35.894	41.522	33.532			323.105	1	375.806		

Autos - Participacion por Segmento





Patentamientos por Ranking de Livianos y Pesados - Mercado Total

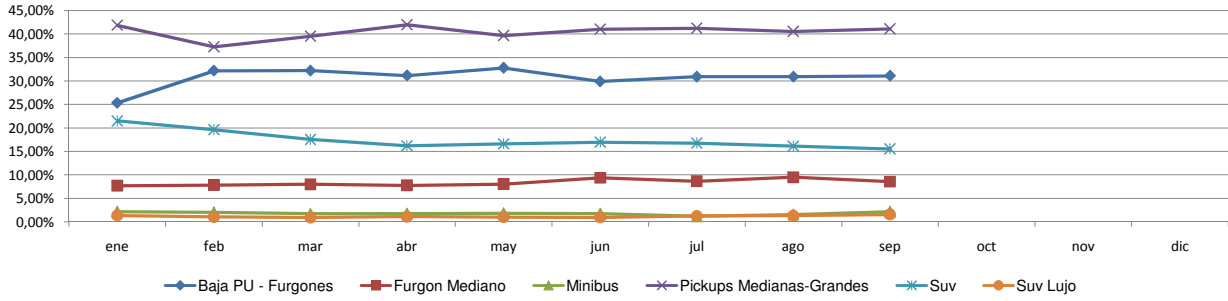
Rank.	Comercial Liviano										
	Modelo	sep/09 (a)	sep/08 (b)	ago/09 (c)	Var a-b	Var a-c	Ac. 09	Part %	Ac. 08	Part %	Var 09-08
1	Toyota HILUX	1.424	1.684	1.482	-15,44%	-3,91%	15.132	20,57%	15.269	15,56%	-0,90%
2	Ford RANGER	1.085	1.281	875	-15,30%	24,00%	7.775	10,57%	12.709	12,95%	-38,82%
3	Renault KANGOO FURGON	754	1.045	718	-27,85%	5,01%	6.763	9,19%	9.624	9,81%	-29,73%
4	Chevrolet S-10	454	859	337	-47,15%	34,72%	4.688	6,37%	7.629	7,78%	-38,55%
5	Peugeot PARTNER FURGON	478	737	353	-35,14%	35,41%	4.240	5,76%	5.764	5,87%	-26,44%
6	Fiat FIORINO	497	576	416	-13,72%	19,47%	4.051	5,51%	5.133	5,23%	-21,08%
7	Volkswagen SAVEIRO	195	469	269	-58,42%	-27,51%	2.605	3,54%	3.176	3,24%	-17,98%
8	Honda CRV	236	499	217	-52,71%	8,76%	2.481	3,37%	4.142	4,22%	-40,10%
9	Citroen BERLINGO FURGON	197	439	176	-55,13%	11,93%	2.414	3,28%	2.774	2,83%	-12,98%
10	Mercedes Benz SPRINTER	184	328	245	-43,90%	-24,90%	2.091	2,84%	3.066	3,12%	-31,80%
11	Renault MASTER	260	249	235	4,42%	10,64%	2.077	2,82%	2.368	2,41%	-12,29%
12	Toyota HILUX SW4	160	195	145	-17,95%	10,34%	1.647	2,24%	2.006	2,04%	-17,90%
13	Ford F 100	110	172	135	-36,05%	-18,52%	1.303	1,77%	1.920	1,96%	-32,14%
14	Suzuki GRAND VITARA	41	102	75	-59,80%	-45,33%	1.143	1,55%	885	0,90%	29,15%
15	Chery TIGGO	141	77	108	83,12%	30,56%	1.024	1,39%	183	0,19%	459,56%
16	Fiat STRADA	141	23	112	513,04%	25,89%	951	1,29%	728	0,74%	30,63%
17	Toyota RAV 4	59	69	43	-14,49%	37,21%	920	1,25%	539	0,55%	70,69%
18	Hyundai TUCSON	87	164	76	-46,95%	14,47%	767	1,04%	1.356	1,38%	-43,44%
19	Chevrolet CAPTIVA	59	114	89	-48,25%	-33,71%	677	0,92%	1.160	1,18%	-41,64%
20	Kia K2700	56	206	70	-72,82%	-20,00%	642	0,87%	785	0,80%	-18,22%
21	Otros	1.043	1.917	991	-45,59%	5,25%	10.165	13,82%	16.906	17,23%	-39,87%
Total		7.661	11.205	7.167			73.556	1	98.122		

Rank.	Comercial Pesado										
	Modelo	sep/09 (a)	sep/08 (b)	ago/09 (c)	Var a-b	Var a-c	Ac. 09	Part %	Ac. 08	Part %	Var 09-08
1	Mercedes Benz BMO 384	43	63	40	-31,75%	7,50%	640	6,04%	79	0,42%	710,13%
2	Ford CARGO 1722 E	86	121	72	-28,93%	19,44%	633	5,98%	1.313	7,03%	-51,79%
3	Mercedes Benz L-1624	37	111	55	-66,67%	-32,73%	627	5,92%	763	4,09%	-17,82%
4	Iveco 170 E	99	117	61	-15,38%	62,30%	554	5,23%	1.013	5,43%	-45,31%
5	Mercedes Benz 1315	33	49	83	-32,65%	-60,24%	496	4,68%	575	3,08%	-13,74%
6	Ford F-4000	49	128	46	-61,72%	6,52%	479	4,52%	848	4,54%	-43,51%
7	Mercedes Benz OF 1418	10	47	16	-78,72%	-37,50%	343	3,24%	910	4,87%	-62,31%
8	Mercedes Benz ATEGO 1725	40	64	55	-37,50%	-27,27%	343	3,24%	565	3,03%	-39,29%
9	Volkswagen 17220	27	99	29	-72,73%	-6,90%	297	2,80%	773	4,14%	-61,58%
10	Mercedes Benz LS 1634	17	88	25	-80,68%	-32,00%	274	2,59%	923	4,94%	-70,31%
11	Mercedes Benz 710	30	59	30	-49,15%	0,00%	273	2,58%	493	2,64%	-44,62%
12	Mercedes Benz OF 1722	36	29	22	24,14%	63,64%	266	2,51%	285	1,53%	-6,67%
13	Scania G340	25	45	21	-44,44%	19,05%	259	2,45%	288	1,54%	-10,07%
14	Agrale MT12	18	40	20	-55,00%	-10,00%	253	2,39%	229	1,23%	10,48%
15	Mercedes Benz L-1318	33	20	33	65,00%	0,00%	202	1,91%	196	1,05%	3,06%
16	Iveco 450 E	60	66	22	-9,09%	172,73%	190	1,79%	624	3,34%	-69,55%
17	Mercedes Benz O-500	37	60	15	-38,33%	146,67%	190	1,79%	318	1,70%	-40,25%
18	Ford CARGO 1832 E	26	53	28	-50,94%	-7,14%	183	1,73%	541	2,90%	-66,17%
19	Mercedes Benz L1634	37	33	16	12,12%	131,25%	174	1,64%	379	2,03%	-54,09%
20	Ford CARGO 1517 E	12	57	21	-78,95%	-42,86%	165	1,56%	215	1,15%	-23,26%
21	Otros	448	841	410	-46,73%	9,27%	3.748	35,40%	7.342	39,32%	-48,95%
Total		1.203	2.190	1.120			10.589	1	18.672		

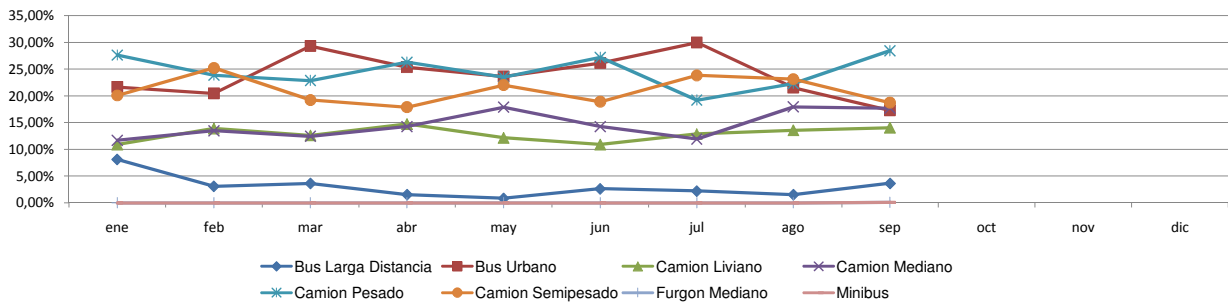


Patentamientos por Ranking de Livianos y Pesados - Mercado Total

Comercial Liviano



Comercial Pesado





Patentamientos por Provincias y Tipos -

Distrito	Automovil+Comercial Liviano							Comercial Pesado+Otros Pesados							Mercado Total					
	sep/09 (a)	sep/08 (b)	ago/09 (c)	Var a-b	Var a-c	Ac. 09	Ac. 08	Var 09-08	sep/09 (a)	sep/08 (b)	ago/09 (c)	Var a-b	Var a-c	Ac. 09	Ac. 08	Var 09-08	Ac. 09	Ac. 08	Var 09-08	Part %
CAPITAL FEDERAL	8.519	10.137	7.379	-15,96%	15,45%	69.305	86.423	-19,81%	445	739	431	-39,78%	3,25%	3.974	6.896	-42,37%	73.280	93.319	-21,47%	17,72%
GRAN BUENOS AIRES	7.876	8.630	7.137	-8,74%	10,35%	68.729	75.686	-9,19%	213	344	165	-38,08%	29,09%	1.644	2.779	-40,84%	70.373	78.465	-10,31%	17,02%
BUENOS AIRES	6.475	8.188	6.167	-20,92%	4,99%	61.256	73.305	-16,44%	210	439	218	-52,16%	-3,67%	1.991	4.042	-50,74%	63.248	77.347	-18,23%	15,29%
CORDOBA	4.504	5.477	4.498	-17,77%	0,13%	42.890	50.390	-14,88%	188	405	136	-53,58%	38,24%	1.509	3.027	-50,15%	44.399	53.417	-16,88%	10,74%
SANTA FE	3.667	4.791	3.465	-23,46%	5,83%	33.600	43.421	-22,62%	155	376	146	-58,78%	6,16%	1.368	3.076	-55,53%	34.969	46.497	-24,79%	8,46%
MENDOZA	1.615	1.861	1.487	-13,22%	8,61%	14.432	17.365	-16,89%	107	153	107	-30,07%	0,00%	849	1.288	-34,08%	15.281	18.653	-18,08%	3,70%
ENTRE RIOS	964	1.222	900	-21,11%	7,11%	9.289	11.579	-19,78%	67	112	57	-40,18%	17,54%	575	981	-41,39%	9.864	12.560	-21,46%	2,39%
CHUBUT	903	1.220	934	-25,98%	-3,32%	9.357	11.379	-17,77%	61	77	53	-20,78%	15,09%	439	918	-52,18%	9.796	12.297	-20,34%	2,37%
SALTA	798	957	780	-16,61%	2,31%	7.960	9.235	-13,81%	49	85	38	-42,35%	28,95%	597	861	-30,66%	8.557	10.096	-15,24%	2,07%
CHACO	698	972	739	-28,19%	-5,55%	7.953	8.757	-9,18%	43	85	47	-49,41%	-8,51%	467	779	-40,05%	8.420	9.536	-11,70%	2,04%
NEUQUEN	866	1.247	782	-30,55%	10,74%	7.994	11.299	-29,25%	28	97	27	-71,13%	3,70%	396	695	-43,02%	8.390	11.994	-30,05%	2,03%
TUCUMAN	784	1.104	868	-28,99%	-9,68%	7.831	9.481	-17,40%	36	78	42	-53,85%	-14,29%	441	673	-34,47%	8.272	10.154	-18,53%	2,00%
CORRIENTES	729	756	701	-3,57%	3,99%	7.293	8.265	-11,76%	52	105	48	-50,48%	8,33%	614	1.090	-43,67%	7.907	9.355	-15,48%	1,91%
SANTA CRUZ	725	909	649	-20,24%	11,71%	6.768	7.726	-12,40%	26	64	19	-59,38%	36,84%	263	413	-36,32%	7.031	8.139	-13,61%	1,70%
RIO NEGRO	607	772	578	-21,37%	5,02%	5.690	7.066	-19,47%	8	19	15	-57,89%	-46,67%	147	214	-31,31%	5.837	7.280	-19,82%	1,41%
MISIONES	492	583	483	-15,61%	1,86%	4.607	5.791	-20,45%	21	46	21	-54,35%	0,00%	191	350	-45,43%	4.798	6.141	-21,87%	1,16%
JUJUY	425	517	448	-17,79%	-5,13%	4.367	4.802	-9,06%	42	67	29	-37,31%	44,83%	417	681	-38,77%	4.784	5.483	-12,75%	1,16%
LA PAMPA	445	641	417	-30,58%	6,71%	4.326	5.672	-23,73%	14	43	17	-67,44%	-17,65%	146	270	-45,93%	4.472	5.942	-24,74%	1,08%
SAN JUAN	450	485	465	-7,22%	-3,23%	4.289	4.633	-7,42%	17	28	22	-39,29%	-22,73%	183	348	-47,41%	4.472	4.981	-10,22%	1,08%
SANTIAGO DEL ESTERO	376	346	321	8,67%	17,13%	3.729	4.155	-10,25%	21	29	33	-27,59%	-36,36%	182	258	-29,46%	3.911	4.413	-11,38%	0,95%
TIERRA DEL FUEGO	436	617	347	-29,34%	25,65%	3.335	5.251	-36,49%	7	29	9	-75,86%	-22,22%	98	292	-66,44%	3.433	5.543	-38,07%	0,83%
FORMOSA	326	331	317	-1,51%	2,84%	3.247	3.340	-2,78%	10	18	20	-44,44%	-50,00%	134	156	-14,10%	3.381	3.496	-3,29%	0,82%
SAN LUIS	371	342	302	8,48%	22,85%	3.266	3.440	-5,06%	4	10	2	-60,00%	100,00%	108	108	0,00%	3.374	3.548	-4,90%	0,82%
CATAMARCA	263	365	271	-27,95%	-2,95%	2.784	3.321	-16,17%	2	9	9	-77,78%	-77,78%	75	107	-29,91%	2.859	3.428	-16,60%	0,69%
LA RIOJA	242	257	266	-5,84%	-9,02%	2.372	2.146	10,53%	5	13	22	-61,54%	-77,27%	73	95	-23,16%	2.445	2.241	9,10%	0,59%



Patentamientos por Provincias y Tipos -

