

Patentamientos por Marcas - Mercado Total

	nov/09(a)	oct/09(b)	nov/08(c)	nov/07(d)	Var a-b	Var a-c	Var a-d	Ac. 09	Ac. 08	Var 09-08
Automovil	29.715	31.109	27.184	29.708	-4,48%	9,31%	0,02%	384.400	441.308	-12,90%
Comercial Liviano	6.128	7.087	6.188	7.997	-13,53%	-0,97%	-23,37%	86.899	113.800	-23,64%
Comercial Pesado	1.046	1.156	1.280	1.787	-9,52%	-18,28%	-41,47%	12.844	22.038	-41,72%
Otros Pesados	561	610	876	1.148	-8,03%	-35,96%	-51,13%	7.459	13.743	-45,73%
Total	37.450	39.962	35.528	40.640	-6,29%	5,41%	-7,85%	491.602	590.889	-16,80%
Prom. diario	1.783	1.903	1.776	1.847				2.185	2.580	
Dias habiles	21	21	20	22				225	229	

Patentamientos por origen		
	09-Nov	Ac. 09
Importados	0	267.558
Nacionales	0	186.595



■ Importados ■ Nacionales

Patentamientos Mensuales												
	ene	feb	mar	abr	may	jun	jul	ago	sep	oct	nov	dic
2009	73.927	39.075	41.303	40.539	40.147	44.110	46.634	42.434	46.021	39.963	37.450	
2008	85.811	46.476	44.277	56.149	56.809	49.082	58.414	51.110	56.197	51.036	35.528	19.891
Var% 09-08	-13,85%	-15,92%	-6,72%	-27,80%	-29,33%	-10,13%	-20,17%	-16,98%	-18,11%	-21,70%	5,41%	-100,00%
2007	82.552	38.841	47.379	41.626	47.231	42.139	50.182	54.285	48.857	49.497	40.640	24.528
2006	65.984	32.425	40.400	34.249	38.284	36.566	36.948	39.123	39.641	36.009	33.252	17.725

Patentamientos por Marcas - Totales										2009	2009	2008	2008	Var
Marca	nov/09(a)	Part %	nov/08(c)	Part %	oct/09(e)	Part %	Var a-c	Var a-e	ene - nov	Part %	ene - nov	Part %	2009-2008	
Volkswagen	9.160	24,84%	6.868	19,82%	8.589	21,83%	33,37%	6,65%	96.249	19,88%	107.856	18,69%	-10,76%	
Chevrolet	5.331	14,45%	5.433	15,68%	4.793	12,18%	-1,88%	11,22%	68.253	14,10%	82.330	14,27%	-17,10%	
Ford	4.354	11,80%	4.294	12,39%	5.654	14,37%	1,40%	-22,99%	64.926	13,41%	72.007	12,48%	-9,83%	
Renault	4.147	11,24%	4.190	12,09%	4.865	12,36%	-1,03%	-14,76%	59.299	12,25%	67.365	11,67%	-11,97%	
Fiat	3.542	9,60%	3.630	10,48%	4.104	10,43%	-2,42%	-13,69%	47.744	9,86%	61.394	10,64%	-22,23%	
Peugeot	3.140	8,51%	3.272	9,44%	3.149	8,00%	-4,03%	-0,29%	43.938	9,08%	57.185	9,91%	-23,17%	
Toyota	1.674	4,54%	1.698	4,90%	2.322	5,90%	-1,41%	-27,91%	28.224	5,83%	29.601	5,13%	-4,65%	
Citroen	1.454	3,94%	1.275	3,68%	1.385	3,52%	14,04%	4,98%	19.575	4,04%	21.435	3,71%	-8,68%	
Honda	987	2,68%	828	2,39%	1.094	2,78%	19,20%	-9,78%	14.593	3,01%	18.455	3,20%	-20,93%	
Mercedes Benz	745	2,02%	743	2,14%	791	2,01%	0,27%	-5,82%	10.024	2,07%	14.146	2,45%	-29,14%	
Suzuki	550	1,49%	646	1,86%	505	1,28%	-14,86%	8,91%	6.403	1,32%	8.952	1,55%	-28,47%	
Nissan	319	0,86%	252	0,73%	345	0,88%	26,59%	-7,54%	3.870	0,80%	6.116	1,06%	-36,72%	
Hyundai	229	0,62%	261	0,75%	290	0,74%	-12,26%	-21,03%	3.340	0,69%	4.784	0,83%	-30,18%	
Audi	131	0,36%	135	0,39%	158	0,40%	-2,96%	-17,09%	2.593	0,54%	3.210	0,56%	-19,22%	
Iveco	215	0,58%	251	0,72%	223	0,57%	-14,34%	-3,59%	2.210	0,46%	4.364	0,76%	-49,36%	
BMW	123	0,33%	84	0,24%	158	0,40%	46,43%	-22,15%	2.116	0,44%	2.701	0,47%	-21,66%	
Kia	186	0,50%	198	0,57%	194	0,49%	-6,06%	-4,12%	2.087	0,43%	3.590	0,62%	-41,87%	
Dodge	60	0,16%	53	0,15%	122	0,31%	13,21%	-50,82%	1.239	0,26%	994	0,17%	24,65%	
Chery	76	0,21%	43	0,12%	93	0,24%	76,74%	-18,28%	1.195	0,25%	300	0,05%	298,33%	
Chrysler	42	0,11%	68	0,20%	59	0,15%	-38,24%	-28,81%	923	0,19%	1.607	0,28%	-42,56%	
Scania	66	0,18%	90	0,26%	50	0,13%	-26,67%	32,00%	882	0,18%	1.581	0,27%	-44,21%	
Jeep	58	0,16%	56	0,16%	50	0,13%	3,57%	16,00%	854	0,18%	1.536	0,27%	-44,40%	
Mitsubishi	69	0,19%	64	0,18%	68	0,17%	7,81%	1,47%	695	0,14%	1.702	0,29%	-59,17%	
Seat	59	0,16%	21	0,06%	64	0,16%	180,95%	-7,81%	595	0,12%	447	0,08%	33,11%	
Agrale	32	0,09%	67	0,19%	75	0,19%	-52,24%	-57,33%	594	0,12%	622	0,11%	-4,50%	
Volvo	36	0,10%	69	0,20%	43	0,11%	-47,83%	-16,28%	531	0,11%	1.163	0,20%	-54,34%	
Mini	16	0,04%	4	0,01%	37	0,09%	300,00%	-56,76%	352	0,07%	413	0,07%	-14,77%	
Subaru	29	0,08%	36	0,10%	42	0,11%	-19,44%	-30,95%	344	0,07%	543	0,09%	-36,65%	
Puma de Tat	11	0,03%	3	0,01%	4	0,01%	266,67%	175,00%	150	0,03%	309	0,05%	-51,46%	
Land Rover	21	0,06%	9	0,03%	14	0,04%	133,33%	50,00%	124	0,03%	199	0,03%	-37,69%	
Porsche	8	0,02%	9	0,03%	3	0,01%	-11,11%	166,67%	81	0,02%	183	0,03%	-55,74%	
Materfer		0,00%		0,00%	4	0,01%	N/D	-100,00%	38	0,01%	1	0,00%	3700,00%	
Alfa Romeo	8	0,02%		0,00%	6	0,02%	N/D	33,33%	37	0,01%	27	0,00%	37,04%	
Mack	2	0,01%		0,00%		0,00%	N/D	N/D	11	0,00%		0,00%	N/D	
Ferrari	1	0,00%	1	0,00%		0,00%	0,00%	N/D	5	0,00%	5	0,00%	0,00%	
Jaguar		0,00%		0,00%		0,00%	N/D	N/D	4	0,00%	2	0,00%	100,00%	
Hummer	2	0,01%		0,00%		0,00%	N/D	N/D	2	0,00%	2	0,00%	0,00%	
Lexus		0,00%	1	0,00%		0,00%	-100,00%	N/D	1	0,00%	1	0,00%	0,00%	
Lamborghini		0,00%		0,00%		0,00%	N/D	N/D		0,00%	1	0,00%	-100,00%	
Total	36.883		34.652		39.353				484.101		577.129			

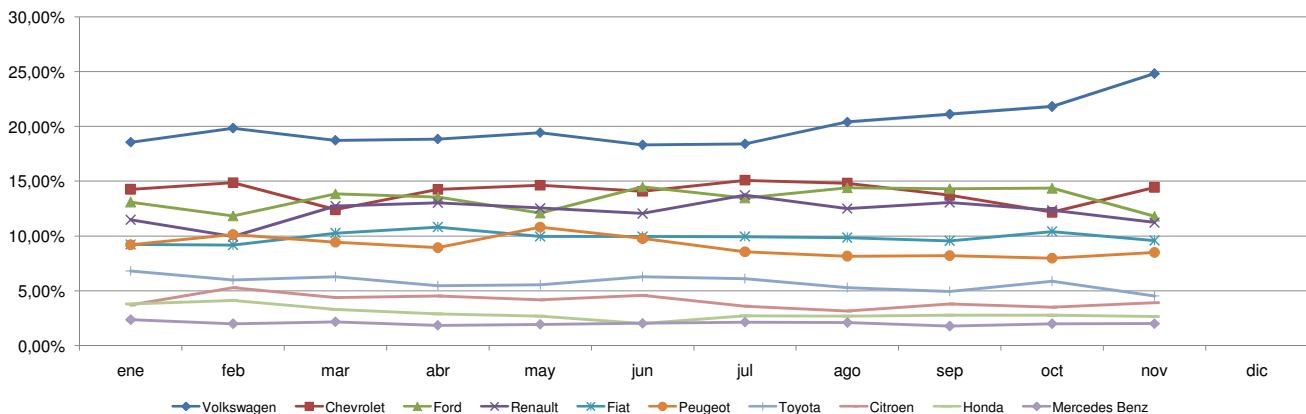


Patentamientos por Marcas - Mercado Total

Patentamientos por Marcas - Autos + Livianos								2009	2009	2008	2008	Var	
Marca	nov/09(a)	Part %	nov/08(c)	Part %	oct/09(e)	Part %	Var a-c	Var a-e	ene - nov	Part %	ene - nov	Part %	2009-2008
Volkswagen	9.060	25,28%	6.753	20,24%	8.477	22,19%	34,16%	6,88%	95.103	20,18%	105.213	18,95%	-9,61%
Chevrolet	5.331	14,87%	5.433	16,28%	4.793	12,55%	-1,88%	11,22%	68.253	14,48%	82.330	14,83%	-17,10%
Ford	4.125	11,51%	4.040	12,11%	5.387	14,10%	2,10%	-23,43%	62.497	13,26%	67.680	12,19%	-7,66%
Renault	4.107	11,46%	4.142	12,41%	4.829	12,64%	-0,85%	-14,95%	58.991	12,52%	66.743	12,02%	-11,61%
Fiat	3.540	9,88%	3.630	10,88%	4.104	10,74%	-2,48%	-13,74%	47.742	10,13%	61.394	11,06%	-22,24%
Peugeot	3.140	8,76%	3.272	9,80%	3.148	8,24%	-4,03%	-0,25%	43.937	9,32%	57.185	10,30%	-23,17%
Toyota	1.674	4,67%	1.698	5,09%	2.322	6,08%	-1,41%	-27,91%	28.224	5,99%	29.601	5,33%	-4,65%
Citroen	1.454	4,06%	1.275	3,82%	1.385	3,63%	14,04%	4,98%	19.575	4,15%	21.435	3,86%	-8,68%
Honda	987	2,75%	828	2,48%	1.094	2,86%	19,20%	-9,78%	14.593	3,10%	18.455	3,32%	-20,93%
Suzuki	550	1,53%	646	1,94%	505	1,32%	-14,86%	8,91%	6.403	1,36%	8.952	1,61%	-28,47%
Mercedes Benz	361	1,01%	275	0,82%	373	0,98%	31,27%	-3,22%	4.677	0,99%	6.231	1,12%	-24,94%
Nissan	319	0,89%	252	0,76%	345	0,90%	26,59%	-7,54%	3.870	0,82%	6.116	1,10%	-36,72%
Hyundai	214	0,60%	249	0,75%	271	0,71%	-14,06%	-21,03%	3.175	0,67%	4.566	0,82%	-30,31%
Audi	131	0,37%	135	0,40%	158	0,41%	-2,96%	-17,09%	2.593	0,55%	3.210	0,58%	-19,22%
BMW	123	0,34%	84	0,25%	158	0,41%	46,43%	-22,15%	2.116	0,45%	2.701	0,49%	-21,66%
Kia	186	0,52%	198	0,59%	194	0,51%	-6,06%	-4,12%	2.087	0,44%	3.590	0,65%	-41,87%
Dodge	60	0,17%	53	0,16%	122	0,32%	13,21%	-50,82%	1.239	0,26%	994	0,18%	24,65%
Chery	76	0,21%	43	0,13%	93	0,24%	76,74%	-18,28%	1.195	0,25%	300	0,05%	298,33%
Chrysler	42	0,12%	68	0,20%	59	0,15%	-38,24%	-28,81%	923	0,20%	1.607	0,29%	-42,56%
Jeep	58	0,16%	56	0,17%	50	0,13%	3,57%	16,00%	854	0,18%	1.536	0,28%	-44,40%
Iveco	73	0,20%	75	0,22%	75	0,20%	-2,67%	-2,67%	780	0,17%	1.313	0,24%	-40,59%
Mitsubishi	69	0,19%	64	0,19%	68	0,18%	7,81%	1,47%	695	0,15%	1.702	0,31%	-59,17%
Seat	59	0,16%	21	0,06%	64	0,17%	180,95%	-7,81%	595	0,13%	447	0,08%	33,11%
Mini	16	0,04%	4	0,01%	37	0,10%	300,00%	-56,76%	352	0,07%	413	0,07%	-14,77%
Subaru	29	0,08%	36	0,11%	42	0,11%	-19,44%	-30,95%	344	0,07%	543	0,10%	-36,65%
Volvo	18	0,05%	22	0,07%	20	0,05%	-18,18%	-10,00%	221	0,05%	440	0,08%	-49,77%
Land Rover	21	0,06%	9	0,03%	14	0,04%	133,33%	50,00%	124	0,03%	199	0,04%	-37,69%
Porsche	8	0,02%	9	0,03%	3	0,01%	-11,11%	166,67%	81	0,02%	183	0,03%	-55,74%
Alfa Romeo	8	0,02%		0,00%	6	0,02%	N/D	33,33%	37	0,01%	27	0,00%	37,04%
Ferrari	1	0,00%	1	0,00%		0,00%	0,00%	N/D	5	0,00%	5	0,00%	0,00%
Jaguar		0,00%		0,00%		0,00%	N/D	N/D	4	0,00%	2	0,00%	100,00%
Agrale		0,00%		0,00%		0,00%	N/D	N/D	2	0,00%	1	0,00%	100,00%
Hummer	2	0,01%		0,00%		0,00%	N/D	N/D	2	0,00%	2	0,00%	0,00%
Lexus		0,00%	1	0,00%		0,00%	-100,00%	N/D	1	0,00%	1	0,00%	0,00%
Lamborghini		0,00%		0,00%		0,00%	N/D	N/D		0,00%	1	0,00%	-100,00%
Total	35.842		33.372		38.196				471.290		555.108		

Patentamientos por Marcas - Camiones + Buses								2009	2009	2008	2008	Var	
Marca	nov/09(a)	Part %	nov/08(c)	Part %	oct/09(e)	Part %	Var a-c	Var a-e	ene - nov	Part %	ene - nov	Part %	2009-2008
Mercedes Benz	384	36,89%	468	36,56%	418	36,13%	-17,95%	-8,13%	5.347	41,74%	7.915	35,94%	-32,44%
Ford	229	22,00%	254	19,84%	267	23,08%	-9,84%	-14,23%	2.429	18,96%	4.327	19,65%	-43,86%
Iveco	142	13,64%	176	13,75%	148	12,79%	-19,32%	-4,05%	1.430	11,16%	3.051	13,85%	-53,13%
Volkswagen	100	9,61%	115	8,98%	112	9,68%	-13,04%	-10,71%	1.146	8,95%	2.643	12,00%	-56,64%
Scania	66	6,34%	90	7,03%	50	4,32%	-26,67%	32,00%	882	6,88%	1.581	7,18%	-44,21%
Agrale	32	3,07%	67	5,23%	75	6,48%	-52,24%	-57,33%	592	4,62%	621	2,82%	-4,67%
Volvo	18	1,73%	47	3,67%	23	1,99%	-61,70%	-21,74%	310	2,42%	723	3,28%	-57,12%
Renault	40	3,84%	48	3,75%	36	3,11%	-16,67%	11,11%	308	2,40%	622	2,82%	-50,48%
Hyundai	15	1,44%	12	0,94%	19	1,64%	25,00%	-21,05%	165	1,29%	228	1,04%	-27,63%
Puma de Tat	11	1,06%	3	0,23%	4	0,35%	266,67%	175,00%	150	1,17%	309	1,40%	-51,46%
Materfer		0,00%		0,00%	4	0,35%	N/D	-100,00%	38	0,30%	1	0,00%	3700,00%
Mack	2	0,19%		0,00%		0,00%	N/D	N/D	11	0,09%		0,00%	N/D
Fiat	2	0,19%		0,00%		0,00%	N/D	N/D	2	0,02%		0,00%	N/D
Peugeot		0,00%		0,00%	1	0,09%	N/D	-100,00%	1	0,01%		0,00%	N/D
Total	1.041		1.280		1.157				12.811		22.021		

Participacion por Marcas - Evolucion Mensual

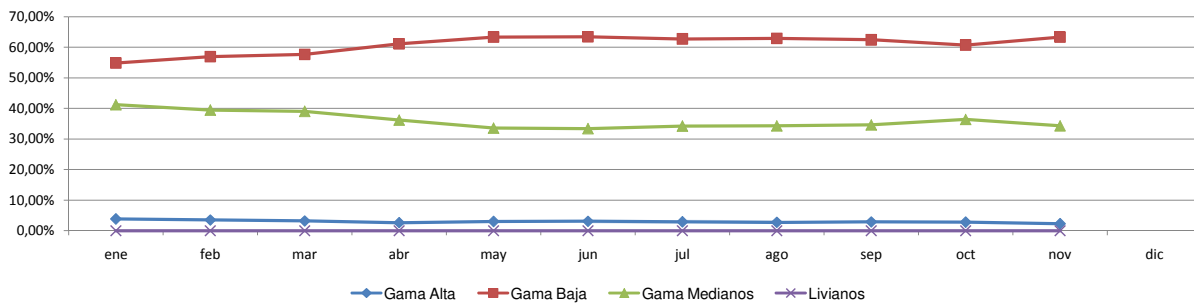




Patentamientos por Ranking de Automoviles - Mercado Total

Rank	Ranking Por Modelos - Automoviles										
	Modelo	nov/09 (a)	nov/08 (b)	oct/09 (c)	Var a-b	Var a-c	Ac. 09	Part %	Ac. 08	Part %	Var 09-08
1	Chevrolet CORSA	1.675	2.560	1.745	-34,57%	-4,01%	26.393	6,87%	33.704	7,64%	-21,69%
2	Peugeot 207 COMPACT	1.622	1.438	1.708	12,80%	-5,04%	23.049	6,00%	3.323	0,75%	593,62%
3	Volkswagen GOL TREND	1.265	980	1.370	29,08%	-7,66%	19.689	5,12%	3.216	0,73%	512,22%
4	Volkswagen GOL	2.646	2.164	2.195	22,27%	20,55%	19.329	5,03%	40.523	9,18%	-52,30%
5	Ford ECOSPORT	1.124	1.023	1.441	9,87%	-22,00%	16.895	4,40%	17.112	3,88%	-1,27%
6	Volkswagen SURAN	1.650	1.123	1.581	46,93%	4,36%	15.542	4,04%	15.382	3,49%	1,04%
7	Renault CLIO	555	1.697	850	-67,30%	-34,71%	13.067	3,40%	17.537	3,97%	-25,49%
8	Ford KA	630	846	928	-25,53%	-32,11%	10.722	2,79%	9.422	2,14%	13,80%
9	Fiat SIENA	783	811	1.036	-3,45%	-24,42%	10.644	2,77%	13.494	3,06%	-21,12%
10	Volkswagen BORA	994	741	987	34,14%	0,71%	10.567	2,75%	12.356	2,80%	-14,48%
11	Ford FIESTA	652	788	657	-17,26%	-0,76%	10.561	2,75%	13.624	3,09%	-22,48%
12	Renault SANDERO	949	200	1.240	374,50%	-23,47%	10.449	2,72%	4.098	0,93%	154,98%
13	Fiat PALIO	603	609	660	-0,99%	-8,64%	8.711	2,27%	11.554	2,62%	-24,61%
14	Volkswagen VOYAGE	669	3	717	22200,00%	-6,69%	8.401	2,19%	3	0,00%	279933,33%
15	Volkswagen FOX/CROSSFOX	953	561	763	69,88%	24,90%	8.187	2,13%	12.544	2,84%	-34,73%
16	Honda FIT	577	284	681	103,17%	-15,27%	8.145	2,12%	7.564	1,71%	7,68%
17	Citroen C4	495	479	615	3,34%	-19,51%	8.099	2,11%	8.177	1,85%	-0,95%
18	Peugeot 307	464	721	482	-35,64%	-3,73%	7.884	2,05%	15.617	3,54%	-49,52%
19	Fiat UNO	474	695	518	-31,80%	-8,49%	7.632	1,99%	11.355	2,57%	-32,79%
20	Toyota COROLLA	494	434	627	13,82%	-21,21%	7.223	1,88%	7.245	1,64%	-0,30%
21	Ford FOCUS	534	384	821	39,06%	-34,96%	7.042	1,83%	9.113	2,06%	-22,73%
22	Chevrolet ASTRA	354	553	445	-35,99%	-20,45%	6.814	1,77%	10.890	2,47%	-37,43%
23	Chevrolet MERIVA	419	412	432	1,70%	-3,01%	5.867	1,53%	7.256	1,64%	-19,14%
24	Chevrolet CORSA II	332	618	338	-46,28%	-1,78%	5.651	1,47%	9.089	2,06%	-37,83%
25	Ford FOCUS II	379	174	490	117,82%	-22,65%	5.420	1,41%	557	0,13%	873,07%
26	Renault KANGOO	484	461	462	4,99%	4,76%	5.223	1,36%	7.653	1,73%	-31,75%
27	Renault SYMBOL	544		519	N/D	4,82%	5.161	1,34%		0,00%	N/D
28	Chevrolet AVEO	589	3	153	19533,33%	284,97%	5.072	1,32%	3	0,00%	168966,67%
29	Fiat PALIO WEEKEND	302	375	335	-19,47%	-9,85%	4.832	1,26%	4.040	0,92%	19,60%
30	Renault LOGAN	444	198	473	124,24%	-6,13%	4.773	1,24%	4.614	1,05%	3,45%
31	Fiat PUNTO	472	354	572	33,33%	-17,48%	4.745	1,23%	7.342	1,66%	-35,37%
32	Renault MEGANE II	181	231	212	-21,65%	-14,62%	4.521	1,18%	5.106	1,16%	-11,46%
33	Volkswagen VENTO	358	236	378	51,69%	-5,29%	4.478	1,16%	5.165	1,17%	-13,30%
34	Suzuki FUN	515	516	442	-0,19%	16,52%	4.261	1,11%	6.825	1,55%	-37,57%
35	Citroen C3	335	278	266	20,50%	25,94%	4.219	1,10%	4.411	1,00%	-4,35%
36	Chevrolet CORSA SW	202	275	251	-26,55%	-19,52%	3.901	1,01%	4.816	1,09%	-19,00%
37	Peugeot 206	353	350	287	0,86%	23,00%	3.755	0,98%	25.989	5,89%	-85,55%
38	Nissan TIIDA	255	148	293	72,30%	-12,97%	2.958	0,77%	2.958	0,67%	0,00%
39	Renault MEGANE	9	369	27	-97,56%	-66,67%	2.850	0,74%	10.694	2,42%	-73,35%
40	Honda CIVIC	123	311	157	-60,45%	-21,66%	2.829	0,74%	5.638	1,28%	-49,82%
41	Chevrolet SPARK	94	346	79	-72,83%	18,99%	2.540	0,66%	606	0,14%	319,14%
42	Chevrolet VECTRA	180	136	166	32,35%	8,43%	2.480	0,65%	3.310	0,75%	-25,08%
43	Volkswagen GOL COUNTRY	151	274	137	-44,89%	10,22%	2.182	0,57%	3.884	0,88%	-43,82%
44	Citroen PICASSO	201	114	140	76,32%	43,57%	2.110	0,55%	2.314	0,52%	-8,82%
45	Fiat IDEA	100	200	114	-50,00%	-12,28%	1.908	0,50%	4.193	0,95%	-54,50%
46	Citroen BERLINGO	83	130	61	-36,15%	36,07%	1.466	0,38%	2.590	0,59%	-43,40%
47	Fiat LINEA	143		172	N/D	-16,86%	1.445	0,38%		0,00%	N/D
48	Renault SCENIC	94	124	81	-24,19%	16,05%	1.421	0,37%	2.242	0,51%	-36,62%
49	Peugeot PARTNER	136	122	109	11,48%	24,77%	1.398	0,36%	2.693	0,61%	-48,09%
50	Chevrolet AGILE	734		484	N/D	51,65%	1.263	0,33%		0,00%	N/D
51	Otros	1.340	1.335	1.412	0,37%	-5,10%	20.620	5,36%	29.467	6,68%	-30,02%
Total		29.714	27.184	31.109			384.394	1	441.308		

Autos - Participacion por Segmento





Patentamientos por Ranking de Livianos y Pesados - Mercado Total

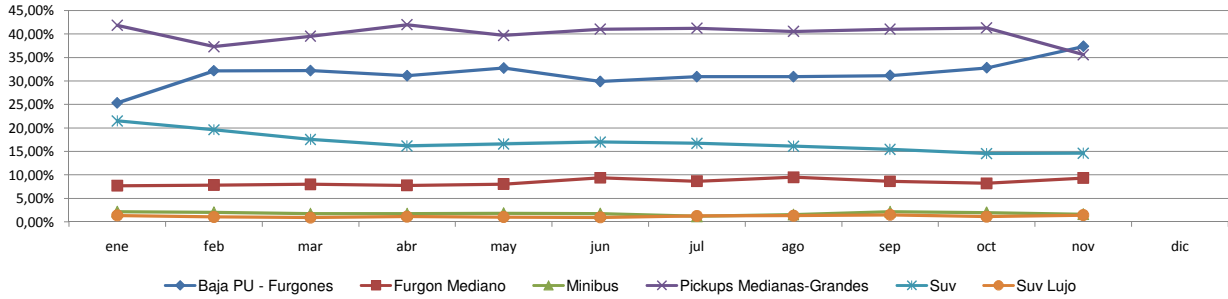
Rank.	Comercial Liviano										
	Modelo	nov/09 (a)	nov/08 (b)	oct/09 (c)	Var a-b	Var a-c	Ac. 09	Part %	Ac. 08	Part %	Var 09-08
1	Toyota HILUX	1.025	1.049	1.469	-2,29%	-30,22%	17.645	20,31%	17.972	15,79%	-1,82%
2	Ford RANGER	635	687	824	-7,57%	-22,94%	9.259	10,66%	14.351	12,61%	-35,48%
3	Renault KANGOO FURGON	664	605	786	9,75%	-15,52%	8.232	9,47%	11.022	9,69%	-25,31%
4	Chevrolet S-10	371	321	414	15,58%	-10,39%	5.475	6,30%	8.605	7,56%	-36,37%
5	Peugeot PARTNER FURGON	430	461	427	-6,72%	0,70%	5.104	5,87%	6.868	6,04%	-25,68%
6	Fiat FIORINO	371	388	397	-4,38%	-6,55%	4.824	5,55%	6.074	5,34%	-20,58%
7	Citroen BERLINGO FURGON	259	245	216	5,71%	19,91%	2.892	3,33%	3.465	3,04%	-16,54%
8	Honda CRV	167	193	203	-13,47%	-17,73%	2.850	3,28%	4.707	4,14%	-39,45%
9	Volkswagen SAVEIRO	110	251	126	-56,18%	-12,70%	2.844	3,27%	3.796	3,34%	-25,08%
10	Mercedes Benz SPRINTER	224	198	221	13,13%	1,36%	2.540	2,92%	3.622	3,18%	-29,87%
11	Renault MASTER	91	219	106	-58,45%	-14,15%	2.278	2,62%	2.804	2,46%	-18,76%
12	Toyota HILUX SW4	92	116	140	-20,69%	-34,29%	1.881	2,16%	2.290	2,01%	-17,86%
13	Ford F 100	82	67	143	22,39%	-42,66%	1.531	1,76%	2.099	1,84%	-27,06%
14	Fiat STRADA	126	11	128	1045,45%	-1,56%	1.208	1,39%	762	0,67%	58,53%
15	Chery TIGGO	76	43	93	76,74%	-18,28%	1.195	1,38%	300	0,26%	298,33%
16	Suzuki GRAND VITARA	11	65	13	-83,08%	-15,38%	1.169	1,35%	1.044	0,92%	11,97%
17	Toyota RAV 4	52	61	66	-14,75%	-21,21%	1.038	1,19%	677	0,59%	53,32%
18	Hyundai TUCSON	56	78	92	-28,21%	-39,13%	919	1,06%	1.529	1,34%	-39,90%
19	Iveco DAILY	73	75	75	-2,67%	-2,67%	780	0,90%	1.313	1,15%	-40,59%
20	Chevrolet CAPTIVA	29	55	50	-47,27%	-42,00%	757	0,87%	1.311	1,15%	-42,26%
21	Otros	1.184	1.000	1.098	18,40%	7,83%	12.475	14,36%	19.189	16,86%	-34,99%
Total		6.128	6.188	7.087			86.896	1	113.800		

Rank.	Comercial Pesado										
	Modelo	nov/09 (a)	nov/08 (b)	oct/09 (c)	Var a-b	Var a-c	Ac. 09	Part %	Ac. 08	Part %	Var 09-08
1	Ford CARGO 1722 E	79	86	85	-8,14%	-7,06%	796	6,21%	1.512	6,87%	-47,35%
2	Mercedes Benz BMO 384	82	44	71	86,36%	15,49%	795	6,21%	187	0,85%	325,13%
3	Mercedes Benz L-1624	28	73	40	-61,64%	-30,00%	699	5,46%	950	4,31%	-26,42%
4	Iveco 170 E	58	83	53	-30,12%	9,43%	674	5,26%	1.215	5,52%	-44,53%
5	Ford F-4000	48	51	54	-5,88%	-11,11%	581	4,54%	966	4,39%	-39,86%
6	Mercedes Benz 1315	30	52	34	-42,31%	-11,76%	560	4,37%	692	3,14%	-19,08%
7	Mercedes Benz ATEGO 1725	26	48	33	-45,83%	-21,21%	403	3,15%	674	3,06%	-40,21%
8	Mercedes Benz OF 1418	9	11	10	-18,18%	-10,00%	362	2,83%	947	4,30%	-61,77%
9	Volkswagen 17220	34	45	29	-24,44%	17,24%	360	2,81%	887	4,03%	-59,41%
10	Mercedes Benz 710	26	25	30	4,00%	-13,33%	329	2,57%	560	2,54%	-41,25%
11	Mercedes Benz LS 1634	18	48	23	-62,50%	-21,74%	315	2,46%	1.050	4,77%	-70,00%
12	Scania G340	19	32	24	-40,63%	-20,83%	301	2,35%	377	1,71%	-20,16%
13	Mercedes Benz OF 1722	9	21	17	-57,14%	-47,06%	292	2,28%	406	1,84%	-28,08%
14	Agrale MT12	13	43	16	-69,77%	-18,75%	282	2,20%	314	1,43%	-10,19%
15	Iveco 450 E	27	28	55	-3,57%	-50,91%	271	2,12%	713	3,24%	-61,99%
16	Mercedes Benz O-500	44	27	25	62,96%	76,00%	259	2,02%	368	1,67%	-29,62%
17	Mercedes Benz L-1318	24	16	25	50,00%	-4,00%	251	1,96%	232	1,05%	8,19%
18	Ford CARGO 1832 E	28	29	39	-3,45%	-28,21%	250	1,95%	614	2,79%	-59,28%
19	Mercedes Benz L1634	14	28	33	-50,00%	-57,58%	222	1,73%	432	1,96%	-48,61%
20	Renault PREMIUM	28	27	29	3,70%	-3,45%	215	1,68%	381	1,73%	-43,57%
21	Otros	397	463	431	-14,25%	-7,89%	4.593	35,85%	8.544	38,80%	-46,24%
Total		1.041	1.280	1.156			12.810	1	22.021		

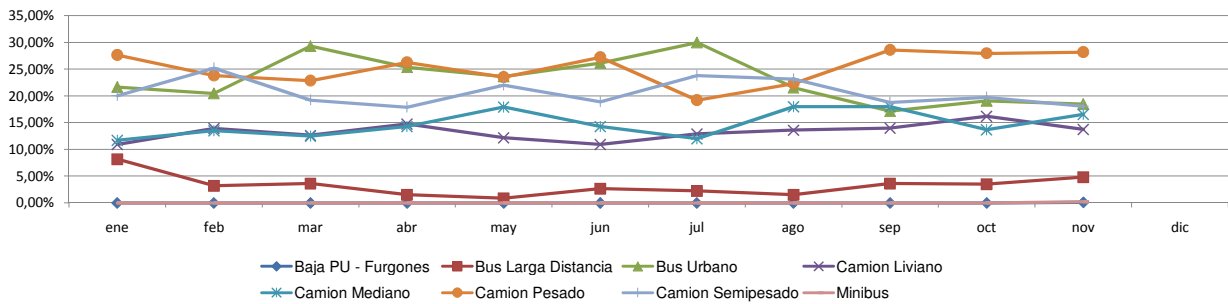


Patentamientos por Ranking de Livianos y Pesados - Mercado Total

Comercial Liviano



Comercial Pesado



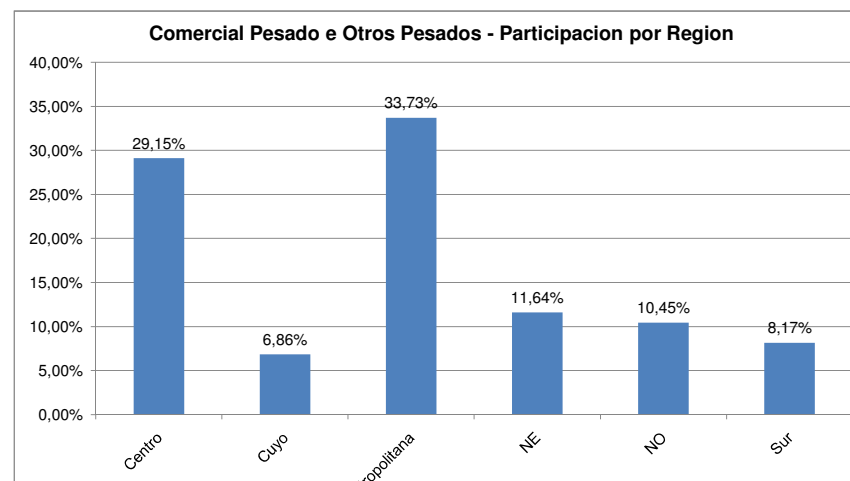
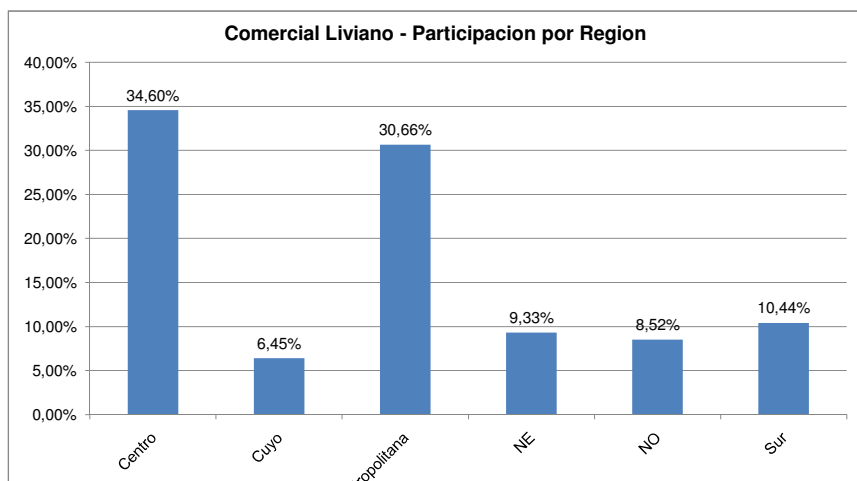
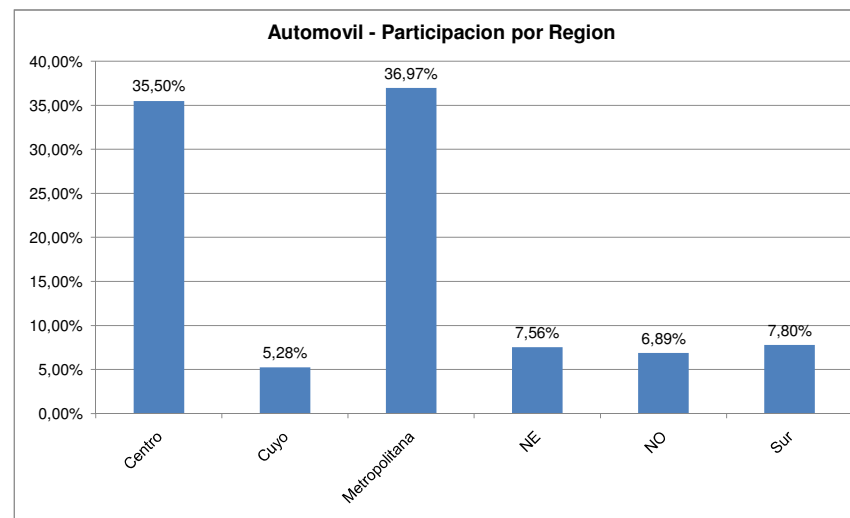
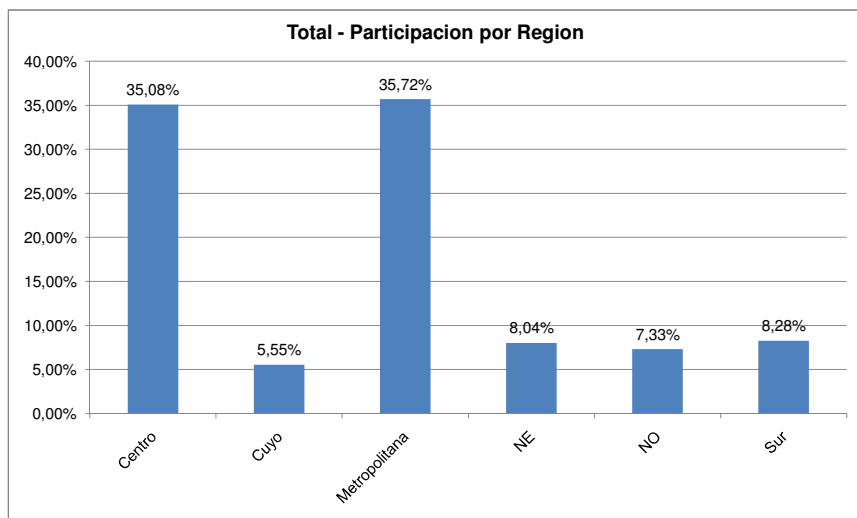


Patentamientos por Provincias y Tipos -

Distrito	Automovil+Comercial Liviano							Comercial Pesado+Otros Pesados							Mercado Total					
	nov/09 (a)	nov/08 (b)	oct/09 (c)	Var a-b	Var a-c	Ac. 09	Ac. 08	Var 09-08	nov/09 (a)	nov/08 (b)	oct/09 (c)	Var a-b	Var a-c	Ac. 09	Ac. 08	Var 09-08	Ac. 09	Ac. 08	Var 09-08	Part %
CAPITAL FEDERAL	7.910	6.657	7.721	18,82%	2,45%	85.022	102.021	-16,66%	441	559	435	-21,11%	1,38%	4.865	8.301	-41,39%	89.887	110.322	-18,52%	18,28%
GRAN BUENOS AIRES	7.077	5.916	7.268	19,62%	-2,63%	83.725	90.229	-7,21%	150	181	167	-17,13%	-10,18%	1.983	3.273	-39,41%	85.708	93.502	-8,34%	17,43%
BUENOS AIRES	5.280	5.272	5.635	0,15%	-6,30%	71.768	85.278	-15,84%	189	315	212	-40,00%	-10,85%	2.371	4.781	-50,41%	74.141	90.059	-17,68%	15,08%
CORDOBA	3.284	3.225	3.944	1,83%	-16,73%	50.160	58.707	-14,56%	130	193	124	-32,64%	4,84%	1.762	3.518	-49,91%	51.922	62.225	-16,56%	10,56%
SANTA FE	2.847	2.562	3.072	11,12%	-7,32%	39.576	50.193	-21,15%	102	223	148	-54,26%	-31,08%	1.622	3.641	-55,45%	41.200	53.834	-23,47%	8,38%
MENDOZA	1.151	1.093	1.401	5,31%	-17,84%	17.041	20.171	-15,52%	67	74	121	-9,46%	-44,63%	1.052	1.482	-29,01%	18.093	21.653	-16,44%	3,68%
ENTRE RIOS	760	681	789	11,60%	-3,68%	10.865	13.403	-18,94%	67	67	68	0,00%	-1,47%	714	1.151	-37,97%	11.579	14.554	-20,44%	2,36%
CHUBUT	734	859	740	-14,55%	-0,81%	10.856	13.411	-19,05%	59	71	68	-16,90%	-13,24%	567	1.055	-46,26%	11.423	14.466	-21,04%	2,32%
SALTA	660	499	775	32,26%	-14,84%	9.394	10.643	-11,74%	33	60	38	-45,00%	-13,16%	668	1.001	-33,27%	10.062	11.644	-13,59%	2,05%
TUCUMAN	756	666	706	13,51%	7,08%	9.303	11.094	-16,14%	38	29	69	31,03%	-44,93%	546	775	-29,55%	9.849	11.869	-17,02%	2,00%
NEUQUEN	609	879	678	-30,72%	-10,18%	9.309	13.301	-30,01%	46	39	34	17,95%	35,29%	484	812	-40,39%	9.793	14.113	-30,61%	1,99%
CHACO	424	725	563	-41,52%	-24,69%	8.941	10.466	-14,57%	24	39	35	-38,46%	-31,43%	526	907	-42,01%	9.467	11.373	-16,76%	1,93%
CORRIENTES	530	566	537	-6,36%	-1,30%	8.320	9.525	-12,65%	53	49	52	8,16%	1,92%	713	1.237	-42,36%	9.034	10.762	-16,06%	1,84%
SANTA CRUZ	518	634	587	-18,30%	-11,75%	7.875	9.168	-14,10%	21	35	24	-40,00%	-12,50%	309	482	-35,89%	8.185	9.650	-15,18%	1,66%
RIO NEGRO	547	538	531	1,67%	3,01%	6.776	8.349	-18,84%	5	16	13	-68,75%	-61,54%	164	241	-31,95%	6.940	8.590	-19,21%	1,41%
JUJUY	303	257	360	17,90%	-15,83%	5.035	5.420	-7,10%	53	45	50	17,78%	6,00%	520	775	-32,90%	5.555	6.195	-10,33%	1,13%
MISIONES	336	260	373	29,23%	-9,92%	5.318	6.490	-18,06%	21	13	16	61,54%	31,25%	228	390	-41,54%	5.546	6.880	-19,39%	1,13%
SAN JUAN	305	310	381	-1,61%	-19,95%	4.981	5.380	-7,42%	16	31	14	-48,39%	14,29%	223	416	-46,39%	5.204	5.796	-10,21%	1,06%
LA PAMPA	330	331	371	-0,30%	-11,05%	5.034	6.571	-23,39%	5	10	12	-50,00%	-58,33%	164	319	-48,59%	5.198	6.890	-24,56%	1,06%
SANTIAGO DEL ESTERO	201	231	287	-12,99%	-29,97%	4.223	4.729	-10,70%	17	28	17	-39,29%	0,00%	216	323	-33,13%	4.439	5.052	-12,13%	0,90%
TIERRA DEL FUEGO	444	503	441	-11,73%	0,68%	4.227	6.479	-34,76%	17	28	19	-39,29%	-10,53%	134	349	-61,60%	4.361	6.828	-36,13%	0,89%
SAN LUIS	287	237	318	21,10%	-9,75%	3.874	4.027	-3,80%	8	11	2	-27,27%	300,00%	118	130	-9,23%	3.992	4.157	-3,97%	0,81%
FORMOSA	209	146	277	43,15%	-24,55%	3.733	3.766	-0,88%	28	31	21	-9,68%	33,33%	183	199	-8,04%	3.916	3.965	-1,24%	0,80%
CATAMARCA	158	202	228	-21,78%	-30,70%	3.173	3.819	-16,92%	6	6	6	0,00%	0,00%	86	124	-30,65%	3.259	3.943	-17,35%	0,66%
LA RIOJA	183	123	213	48,78%	-14,08%	2.770	2.468	12,24%	11	3	1	266,67%	1000,00%	85	99	-14,14%	2.855	2.567	11,22%	0,58%



Patentamientos por Provincias y Tipos -





Patentamientos por Provincias y Tipos -

Meu

Meu