



**Patentamientos por Marcas - Mercado Total**

	abr/10(a)	mar/10(b)	abr/09(c)	abr/08(d)	Var a-b	Var a-c	Var a-d	Ac. 10	Ac. 09	Var 10-09
<b>Automovil</b>	39.074	44.157	31.605	41.839	-11,51%	23,63%	-6,61%	181.039	151.566	19,45%
<b>Comercial Liviano</b>	9.285	10.580	7.310	10.521	-12,24%	27,02%	-11,75%	41.480	35.233	17,73%
<b>Comercial Pesado</b>	1.403	1.620	992	2.207	-13,40%	41,43%	-36,43%	5.509	5.017	9,81%
<b>Otros Pesados</b>	895	930	629	1.582	-3,76%	42,29%	-43,43%	3.144	3.023	4,00%
<b>Total</b>	<b>50.657</b>	<b>57.287</b>	<b>40.536</b>	<b>56.149</b>	<b>-11,57%</b>	<b>24,97%</b>	<b>-9,78%</b>	<b>231.172</b>	<b>194.839</b>	<b>18,65%</b>
<b>Prom. diario</b>	2.533	2.604	2.133	2.674				2.819	2.435	
<b>Dias habiles</b>	20	22	19	21				82	80	

Patentamientos por origen		
	abr/10	Ac. 10
Importados	32.122	143.446
Nacionales	18.535	87.726



■ Importados ■ Nacionales

**Patentamientos Mensuales**

	ene	feb	mar	abr	may	jun	jul	ago	sep	oct	nov	dic
2010	78.467	44.761	57.287	50.657								
2009	73.927	39.075	41.301	40.536	40.147	44.105	46.633	42.434	46.021	39.963	37.493	23.282
<b>Var% 10-09</b>	<b>6,14%</b>	<b>14,55%</b>	<b>38,71%</b>	<b>24,97%</b>	<b>-100,00%</b>	<b>-100,00%</b>	<b>-100,00%</b>	<b>-100,00%</b>	<b>-100,00%</b>	<b>-100,00%</b>	<b>-100,00%</b>	<b>-100,00%</b>
2008	85.811	46.476	44.277	56.149	56.809	49.082	58.414	51.110	56.197	51.035	35.528	19.891
2007	82.552	38.841	47.379	41.626	47.231	42.139	50.181	54.285	48.857	49.497	40.640	24.528

**Patentamientos por Marcas - Totales**

Marca	2010		2009		2010		2009		2010		2009		Var
	abr/10(a)	Part %	abr/09(c)	Part %	ene - abr	Part %	ene - abr	Part %	ene - abr	Part %	ene - abr	Part %	
Volkswagen	11.577	23,24%	7.526	18,84%	11.059	19,60%	53,83%	4,68%	44.786	19,62%	36.284	18,90%	23,43%
Chevrolet	7.617	15,29%	5.691	14,25%	9.261	16,42%	33,84%	-17,75%	35.886	15,72%	26.851	13,98%	33,65%
Ford	6.397	12,84%	5.405	13,53%	6.945	12,31%	18,35%	-7,89%	29.733	13,03%	25.126	13,08%	18,34%
Renault	4.752	9,54%	5.205	13,03%	6.137	10,88%	-8,70%	-22,57%	25.443	11,15%	22.596	11,77%	12,60%
Fiat	5.323	10,69%	4.323	10,82%	5.602	9,93%	23,13%	-4,98%	24.619	10,79%	18.773	9,78%	31,14%
Peugeot	3.623	7,27%	3.577	8,96%	4.656	8,25%	1,29%	-22,19%	17.816	7,81%	18.026	9,39%	-1,16%
Toyota	2.534	5,09%	2.188	5,48%	3.085	5,47%	15,81%	-17,86%	12.473	5,47%	12.022	6,26%	3,75%
Citroen	1.532	3,08%	1.812	4,54%	2.115	3,75%	-15,45%	-27,57%	7.958	3,49%	8.364	4,36%	-4,85%
Honda	1.487	2,99%	1.165	2,92%	1.828	3,24%	27,64%	-18,65%	7.687	3,37%	6.896	3,59%	11,47%
Mercedes Benz	1.054	2,12%	745	1,87%	1.191	2,11%	41,48%	-11,50%	4.431	1,94%	4.138	2,15%	7,08%
Suzuki	600	1,20%	459	1,15%	878	1,56%	30,72%	-31,66%	3.331	1,46%	2.340	1,22%	42,35%
Nissan	633	1,27%	284	0,71%	761	1,35%	122,89%	-16,82%	2.740	1,20%	1.592	0,83%	72,11%
Hyundai	467	0,94%	254	0,64%	423	0,75%	83,86%	10,40%	1.704	0,75%	1.442	0,75%	18,17%
Audi	390	0,78%	189	0,47%	373	0,66%	106,35%	4,56%	1.565	0,69%	1.266	0,66%	23,62%
BMW	237	0,48%	124	0,31%	327	0,58%	91,13%	-27,52%	1.393	0,61%	872	0,45%	59,75%
Dodge	199	0,40%	84	0,21%	360	0,64%	136,90%	-44,72%	1.090	0,48%	579	0,30%	88,26%
Kia	231	0,46%	152	0,38%	218	0,39%	51,97%	5,96%	928	0,41%	816	0,42%	13,73%
Iveco	228	0,46%	175	0,44%	221	0,39%	30,29%	3,17%	899	0,39%	768	0,40%	17,06%
Chery	118	0,24%	92	0,23%	204	0,36%	28,26%	-42,16%	755	0,33%	355	0,18%	112,68%
Mitsubishi	110	0,22%	43	0,11%	108	0,19%	155,81%	1,85%	448	0,20%	288	0,15%	55,56%
Jeep	94	0,19%	69	0,17%	96	0,17%	36,23%	-2,08%	428	0,19%	395	0,21%	8,35%
Scania	120	0,24%	85	0,21%	123	0,22%	41,18%	-2,44%	398	0,17%	475	0,25%	-16,21%
Agrale	69	0,14%	52	0,13%	95	0,17%	32,69%	-27,37%	299	0,13%	250	0,13%	19,60%
Chrysler	40	0,08%	55	0,14%	36	0,06%	-27,27%	11,11%	216	0,09%	403	0,21%	-46,40%
Volvo	84	0,17%	29	0,07%	47	0,08%	189,66%	78,72%	213	0,09%	266	0,14%	-19,92%
Randon	48	0,10%	37	0,09%	58	0,10%	29,73%	-17,24%	206	0,09%	218	0,11%	-5,50%
Subaru	60	0,12%	24	0,06%	55	0,10%	150,00%	9,09%	189	0,08%	121	0,06%	56,20%
Mini	53	0,11%	23	0,06%	32	0,06%	130,43%	65,63%	164	0,07%	139	0,07%	17,99%
Puma de Tat	29	0,06%	15	0,04%	47	0,08%	93,33%	-38,30%	141	0,06%	62	0,03%	127,42%
Seat	67	0,13%	29	0,07%	27	0,05%	131,03%	148,15%	135	0,06%	208	0,11%	-35,10%
Alfa Romeo	16	0,03%		0,00%	18	0,03%	N/D	-11,11%	62	0,03%		0,00%	N/D
Porsche	4	0,01%	7	0,02%	13	0,02%	-42,86%	-69,23%	39	0,02%	32	0,02%	21,88%
Land Rover	7	0,01%	8	0,02%	11	0,02%	-12,50%	-36,36%	31	0,01%	39	0,02%	-20,51%
Jaguar		0,00%		0,00%	4	0,01%	N/D	-100,00%	6	0,00%		0,00%	N/D
Mack	2	0,00%	3	0,01%		0,00%	-33,33%	N/D	5	0,00%	4	0,00%	25,00%
Ferrari	1	0,00%	1	0,00%		0,00%	0,00%	N/D	3	0,00%	2	0,00%	50,00%
Maserati	1	0,00%		0,00%		0,00%	N/D	N/D	1	0,00%		0,00%	N/D
Materfer	1	0,00%	11	0,03%		0,00%	-90,91%	N/D	1	0,00%	21	0,01%	-95,24%
<b>Total</b>	<b>49.805</b>		<b>39.941</b>		<b>56.414</b>				<b>228.222</b>		<b>192.029</b>		

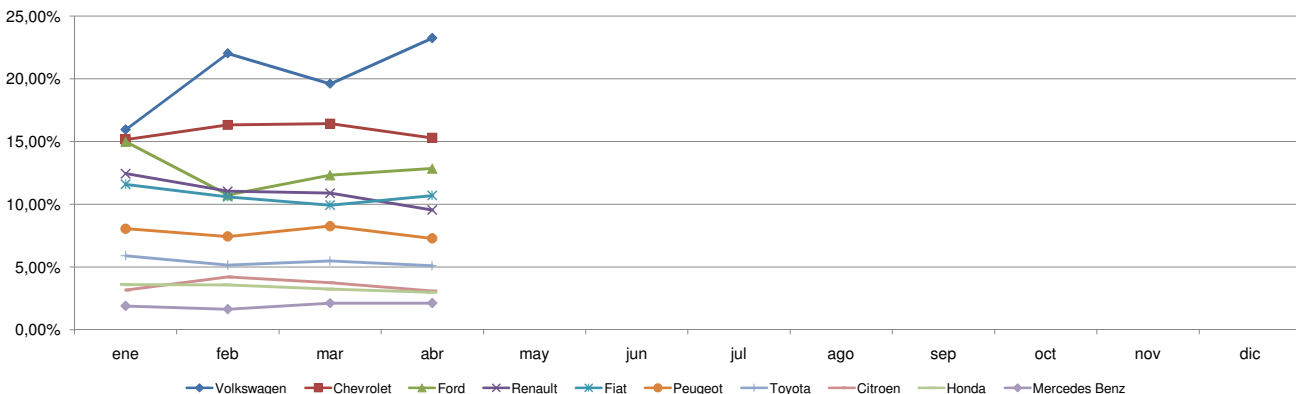


**Patentamientos por Marcas - Mercado Total**

Patentamientos por Marcas - Autos + Livianos								2010	2010	2009	2009	Var	
Marca	abr/10(a)	Part %	abr/09(c)	Part %	mar/10(e)	Part %	Var a-c	Var a-e	ene - abr	Part %	ene - abr	Part %	2010-2009
Volkswagen	11.420	23,62%	7.423	19,08%	10.912	19,94%	53,85%	4,66%	44.255	19,89%	35.818	19,17%	23,56%
Chevrolet	7.617	15,75%	5.691	14,62%	9.261	16,92%	33,84%	-17,75%	35.886	16,13%	26.851	14,37%	33,65%
Ford	6.164	12,75%	5.211	13,39%	6.581	12,02%	18,29%	-6,34%	28.662	12,88%	24.288	13,00%	18,01%
Renault	4.717	9,75%	5.195	13,35%	6.099	11,14%	-9,20%	-22,66%	25.306	11,37%	22.528	12,06%	12,33%
Fiat	5.323	11,01%	4.323	11,11%	5.602	10,23%	23,13%	-4,98%	24.619	11,06%	18.773	10,05%	31,14%
Peugeot	3.623	7,49%	3.577	9,19%	4.656	8,51%	1,29%	-22,19%	17.816	8,01%	18.026	9,65%	-1,16%
Toyota	2.534	5,24%	2.188	5,62%	3.085	5,64%	15,81%	-17,86%	12.473	5,61%	12.022	6,44%	3,75%
Citroen	1.532	3,17%	1.812	4,66%	2.115	3,86%	-15,45%	-27,57%	7.958	3,58%	8.364	4,48%	-4,85%
Honda	1.487	3,08%	1.165	2,99%	1.828	3,34%	27,64%	-18,65%	7.687	3,45%	6.896	3,69%	11,47%
Suzuki	600	1,24%	459	1,18%	878	1,60%	30,72%	-31,66%	3.331	1,50%	2.340	1,25%	42,35%
Nissan	633	1,31%	284	0,73%	761	1,39%	122,89%	-16,82%	2.740	1,23%	1.592	0,85%	72,11%
Mercedes Benz	505	1,04%	349	0,90%	594	1,09%	44,70%	-14,98%	2.298	1,03%	2.022	1,08%	13,65%
Hyundai	449	0,93%	240	0,62%	398	0,73%	87,08%	12,81%	1.629	0,73%	1.387	0,74%	17,45%
Audi	390	0,81%	189	0,49%	373	0,68%	106,35%	4,56%	1.565	0,70%	1.266	0,68%	23,62%
BMW	237	0,49%	124	0,32%	327	0,60%	91,13%	-27,52%	1.393	0,63%	872	0,47%	59,75%
Dodge	199	0,41%	84	0,22%	360	0,66%	136,90%	-44,72%	1.090	0,49%	579	0,31%	88,26%
Kia	231	0,48%	152	0,39%	218	0,40%	51,97%	5,96%	928	0,42%	816	0,44%	13,73%
Chery	118	0,24%	92	0,24%	204	0,37%	28,26%	-42,16%	755	0,34%	355	0,19%	112,68%
Mitsubishi	110	0,23%	43	0,11%	108	0,20%	155,81%	1,85%	448	0,20%	288	0,15%	55,56%
Jeep	94	0,19%	69	0,18%	96	0,18%	36,23%	-2,08%	428	0,19%	395	0,21%	8,35%
Iveco	81	0,17%	80	0,21%	67	0,12%	1,25%	20,90%	300	0,13%	283	0,15%	6,01%
Chrysler	40	0,08%	55	0,14%	36	0,07%	-27,27%	11,11%	216	0,10%	403	0,22%	-46,40%
Subaru	60	0,12%	24	0,06%	55	0,10%	150,00%	9,09%	189	0,08%	121	0,06%	56,20%
Mini	53	0,11%	23	0,06%	32	0,06%	130,43%	65,63%	164	0,07%	139	0,07%	17,99%
Seat	67	0,14%	29	0,07%	27	0,05%	131,03%	148,15%	135	0,06%	208	0,11%	-35,10%
Volvo	43	0,09%	17	0,04%	17	0,03%	152,94%	152,94%	97	0,04%	91	0,05%	6,59%
Alfa Romeo	16	0,03%		0,00%	18	0,03%	N/D	-11,11%	62	0,03%		0,00%	N/D
Porsche	4	0,01%	7	0,02%	13	0,02%	-42,86%	-69,23%	39	0,02%	32	0,02%	21,88%
Land Rover	7	0,01%	8	0,02%	11	0,02%	-12,50%	-36,36%	31	0,01%	39	0,02%	-20,51%
Jaguar		0,00%		0,00%	4	0,01%	N/D	-100,00%	6	0,00%		0,00%	N/D
Ferrari	1	0,00%	1	0,00%		0,00%	0,00%	N/D	3	0,00%	2	0,00%	50,00%
Maserati	1	0,00%		0,00%		0,00%	N/D	N/D	1	0,00%		0,00%	N/D
Agrale		0,00%		0,00%		0,00%	N/D	N/D		0,00%	1	0,00%	-100,00%
<b>Total</b>	<b>48.356</b>		<b>38.914</b>		<b>54.736</b>				<b>222.510</b>		<b>186.797</b>		

Patentamientos por Marcas - Camiones + Buses								2010	2010	2009	2009	Var	
Marca	abr/10(a)	Part %	abr/09(c)	Part %	mar/10(e)	Part %	Var a-c	Var a-e	ene - abr	Part %	ene - abr	Part %	2010-2009
Mercedes Benz	549	37,89%	396	38,56%	597	35,58%	38,64%	-8,04%	2.133	37,34%	2.116	40,44%	0,80%
Ford	233	16,08%	194	18,89%	364	21,69%	20,10%	-35,99%	1.071	18,75%	838	16,02%	27,80%
Iveco	147	10,14%	95	9,25%	154	9,18%	54,74%	-4,55%	599	10,49%	485	9,27%	23,51%
Volkswagen	157	10,84%	103	10,03%	147	8,76%	52,43%	6,80%	531	9,30%	466	8,91%	13,95%
Scania	120	8,28%	85	8,28%	123	7,33%	41,18%	-2,44%	398	6,97%	475	9,08%	-16,21%
Agrale	69	4,76%	52	5,06%	95	5,66%	32,69%	-27,37%	299	5,23%	249	4,76%	20,08%
Randon	48	3,31%	37	3,60%	58	3,46%	29,73%	-17,24%	206	3,61%	218	4,17%	-5,50%
Puma de Tat	29	2,00%	15	1,46%	47	2,80%	93,33%	-38,30%	141	2,47%	62	1,19%	127,42%
Renault	35	2,42%	10	0,97%	38	2,26%	250,00%	-7,89%	137	2,40%	68	1,30%	101,47%
Volvo	41	2,83%	12	1,17%	30	1,79%	241,67%	36,67%	116	2,03%	175	3,34%	-33,71%
Hyundai	18	1,24%	14	1,36%	25	1,49%	28,57%	-28,00%	75	1,31%	55	1,05%	36,36%
Mack	2	0,14%	3	0,29%		0,00%	-33,33%	N/D	5	0,09%	4	0,08%	25,00%
Materfer	1	0,07%	11	1,07%		0,00%	-90,91%	N/D	1	0,02%	21	0,40%	-95,24%
<b>Total</b>	<b>1.449</b>		<b>1.027</b>		<b>1.678</b>				<b>5.712</b>		<b>5.232</b>		

**Participacion por Marcas - Evolucion Mensual**

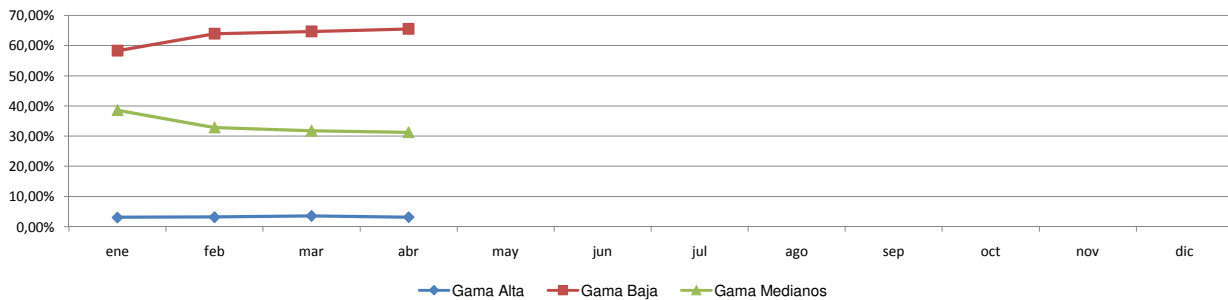




**Patentamientos por Ranking de Automoviles - Mercado Total**

Rank.	Ranking Por Modelos - Automoviles										
	Modelo	abr/10 (a)	abr/09 (b)	mar/10 (c)	Var a-b	Var a-c	Ac. 10	Part %	Ac. 09	Part %	Var 10-09
1	Chevrolet CORSA	2.703	2.104	3.046	28,47%	-11,26%	11.830	6,53%	9.490	6,26%	24,66%
2	Volkswagen GOL TREND	2.879	2.020	2.695	42,52%	6,83%	10.184	5,63%	8.224	5,43%	23,83%
3	Peugeot 207 COMPACT	2.204	1.744	2.643	26,38%	-16,61%	9.434	5,21%	9.136	6,03%	3,26%
4	Volkswagen SURAN	2.345	1.232	2.122	90,34%	10,51%	8.817	4,87%	5.849	3,86%	50,74%
5	Volkswagen GOL	1.703	1.242	1.845	37,12%	-7,70%	7.979	4,41%	6.187	4,08%	28,96%
6	Ford ECOSPORT	1.584	1.253	1.429	26,42%	10,85%	7.484	4,13%	6.715	4,43%	11,45%
7	Renault SANDERO	1.711	730	1.703	134,38%	0,47%	7.178	3,96%	3.025	2,00%	137,29%
8	Ford KA	1.405	843	1.560	66,67%	-9,94%	5.051	2,79%	3.815	2,52%	32,40%
9	Volkswagen BORA	539	474	794	13,71%	-32,12%	4.788	2,64%	4.350	2,87%	10,07%
10	Fiat SIENA	982	937	1.064	4,80%	-7,71%	4.684	2,59%	4.045	2,67%	15,80%
11	Ford FIESTA	804	929	1.111	-13,46%	-27,63%	4.590	2,54%	4.425	2,92%	3,73%
12	Volkswagen VOYAGE	1.213	756	1.275	60,45%	-4,86%	4.534	2,50%	2.786	1,84%	62,74%
13	Chevrolet AGILE	900		1.084	N/D	-16,97%	4.493	2,48%		0,00%	N/D
14	Chevrolet AVEO	1.095	384	846	185,16%	29,43%	4.208	2,32%	1.734	1,14%	142,68%
15	Ford FOCUS II	878	503	774	74,55%	13,44%	3.863	2,13%	2.133	1,41%	81,11%
16	Fiat PUNTO	826	358	828	130,73%	-0,24%	3.858	2,13%	1.667	1,10%	131,43%
17	Fiat PALIO	659	875	786	-24,69%	-16,16%	3.647	2,01%	3.651	2,41%	-0,11%
18	Renault CLIO	418	1.176	914	-64,46%	-54,27%	3.521	1,94%	5.870	3,87%	-40,02%
19	Toyota COROLLA	696	444	840	56,76%	-17,14%	3.515	1,94%	3.084	2,03%	13,98%
20	Honda FIT	618	686	786	-9,91%	-21,37%	3.448	1,90%	3.925	2,59%	-12,15%
21	Fiat UNO	868	708	868	22,60%	0,00%	3.359	1,86%	3.252	2,15%	3,29%
22	Peugeot 307	619	656	807	-5,64%	-23,30%	3.345	1,85%	3.663	2,42%	-8,68%
23	Suzuki FUN	513	186	758	175,81%	-32,32%	2.976	1,64%	1.169	0,77%	154,58%
24	Citroen C4	580	770	755	-24,68%	-23,18%	2.791	1,54%	3.656	2,41%	-23,66%
25	Chevrolet MERIVA	485	583	788	-16,81%	-38,45%	2.776	1,53%	2.397	1,58%	15,81%
26	Renault SYMBOL	282	472	588	-40,25%	-52,04%	2.649	1,46%	1.289	0,85%	105,51%
27	Fiat PALIO WEEKEND	586	391	582	49,87%	0,69%	2.646	1,46%	2.056	1,36%	28,70%
28	Chevrolet CORSA II	524	390	632	34,36%	-17,09%	2.413	1,33%	2.267	1,50%	6,44%
29	Renault LOGAN	483	438	657	10,27%	-26,48%	2.407	1,33%	1.329	0,88%	81,11%
30	Chevrolet ASTRA	357	467	675	-23,55%	-47,11%	2.389	1,32%	3.685	2,43%	-35,17%
31	Honda CITY	453		532	N/D	-14,85%	2.303	1,27%		0,00%	N/D
32	Renault KANGOO	207	438	449	-52,74%	-53,90%	2.218	1,23%	2.012	1,33%	10,24%
33	Nissan TIIDA	481	216	601	122,69%	-19,97%	2.209	1,22%	1.132	0,75%	95,14%
34	Citroen C3	419	378	558	10,85%	-24,91%	2.169	1,20%	1.517	1,00%	42,98%
35	Renault MEGANE II	532	397	437	34,01%	21,74%	2.035	1,12%	1.773	1,17%	14,78%
36	Peugeot 206	402	329	669	22,19%	-39,91%	1.998	1,10%	1.286	0,85%	55,37%
37	Volkswagen VENTO	413	379	519	8,97%	-20,42%	1.921	1,06%	1.602	1,06%	19,91%
38	Volkswagen FOX/CROSSFOX	763	531	442	43,69%	72,62%	1.781	0,98%	2.666	1,76%	-33,20%
39	Ford FOCUS	154	570	161	-72,98%	-4,35%	1.543	0,85%	2.395	1,58%	-35,57%
40	Chevrolet CORSA SW	346	407	397	-14,99%	-12,85%	1.407	0,78%	1.352	0,89%	4,07%
41	Chevrolet VECTRA	293	240	448	22,08%	-34,60%	1.395	0,77%	1.028	0,68%	35,70%
42	Citroen PICASSO	259	220	291	17,73%	-11,00%	1.138	0,63%	966	0,64%	17,81%
43	Fiat IDEA	210	139	225	51,08%	-6,67%	1.075	0,59%	798	0,53%	34,71%
44	Fiat LINEA	129	237	178	-45,57%	-27,53%	917	0,51%	351	0,23%	161,25%
45	Honda CIVIC	136	255	195	-46,67%	-30,26%	839	0,46%	1.444	0,95%	-41,90%
46	Dodge JOURNEY	151	48	286	214,58%	-47,20%	791	0,44%	329	0,22%	140,43%
47	Chevrolet ZAFIRA	170	78	233	117,95%	-27,04%	753	0,42%	523	0,35%	43,98%
48	BMW 300 SERIES	108	46	160	134,78%	-32,50%	745	0,41%	311	0,21%	139,55%
49	Mercedes Benz CLASE C	136	87	150	56,32%	-9,33%	610	0,34%	565	0,37%	7,96%
50	Audi A3	132	79	168	67,09%	-21,43%	594	0,33%	462	0,30%	28,57%
51	Otros	1.718	2.780	1.803	-38,20%	-4,71%	7.737	4,27%	14.179	9,36%	-45,43%
<b>Total</b>		<b>39.071</b>	<b>31.605</b>	<b>44.157</b>			<b>181.035</b>	<b>1</b>	<b>151.565</b>		

**Autos - Participacion por Segmento**





**Patentamientos por Ranking de Livianos y Pesados - Mercado Total**

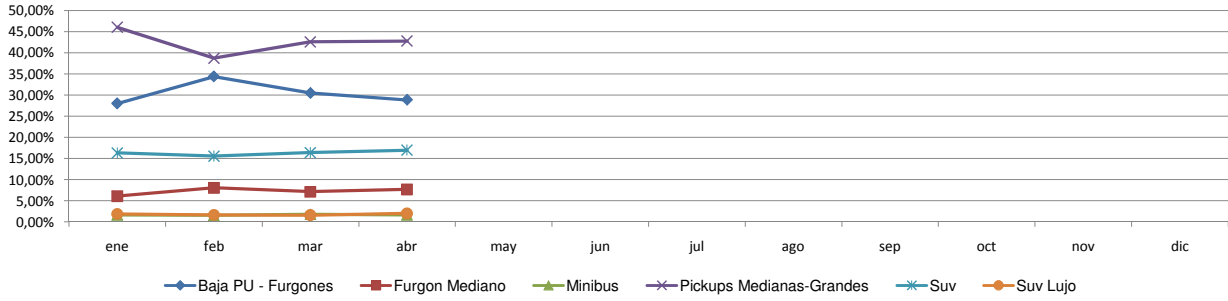
Rank.	Comercial Liviano										
	Modelo	abr/10 (a)	abr/09 (b)	mar/10 (c)	Var a-b	Var a-c	Ac. 10	Part %	Ac. 09	Part %	Var 10-09
1	Toyota HILUX	1.539	1.507	1.857	2,12%	-17,12%	7.456	17,98%	7.209	20,46%	3,43%
2	Ford RANGER	1.003	896	1.211	11,94%	-17,18%	4.810	11,60%	3.513	9,97%	36,92%
3	Chevrolet S-10	565	473	864	19,45%	-34,61%	3.210	7,74%	2.212	6,28%	45,12%
4	Renault KANGOO FURGON	603	682	816	-11,58%	-26,10%	3.176	7,66%	2.816	7,99%	12,78%
5	Fiat FIORINO	660	420	595	57,14%	10,92%	2.696	6,50%	1.811	5,14%	48,87%
6	Peugeot PARTNER FURGON	240	486	361	-50,62%	-33,52%	1.841	4,44%	2.125	6,03%	-13,36%
7	Volkswagen SAVEIRO	625	232	649	169,40%	-3,70%	1.732	4,18%	1.203	3,41%	43,97%
8	Citroen BERLINGO FURGON	175	260	360	-32,69%	-51,39%	1.267	3,05%	1.375	3,90%	-7,85%
9	Mercedes Benz SPRINTER	273	190	293	43,68%	-6,83%	1.133	2,73%	1.022	2,90%	10,86%
10	Renault MASTER	238	150	302	58,67%	-21,19%	1.105	2,66%	822	2,33%	34,43%
11	Fiat STRADA	247	72	269	243,06%	-8,18%	1.017	2,45%	442	1,25%	130,09%
12	Honda CRV	239	196	273	21,94%	-12,45%	932	2,25%	1.269	3,60%	-26,56%
13	Toyota HILUX SW4	167	124	215	34,68%	-22,33%	808	1,95%	897	2,55%	-9,92%
14	Chery TIGGO	118	92	204	28,26%	-42,16%	755	1,82%	355	1,01%	112,68%
15	Volkswagen AMAROK	490		120	N/D	308,33%	727	1,75%		0,00%	N/D
16	Ford F 100	147	107	176	37,38%	-16,48%	707	1,70%	777	2,21%	-9,01%
17	Hyundai TUCSON	149	59	206	152,54%	-27,67%	623	1,50%	391	1,11%	59,34%
18	Toyota RAV 4	106	87	137	21,84%	-22,63%	578	1,39%	608	1,73%	-4,93%
19	Mitsubishi L200	87	25	103	248,00%	-15,53%	390	0,94%	181	0,51%	115,47%
20	Fiat UNO	87	62	118	40,32%	-26,27%	373	0,90%	270	0,77%	38,15%
21	Otros	1.527	1.189	1.450	28,43%	5,31%	6.139	14,80%	5.934	16,84%	3,45%
<b>Total</b>		<b>9.285</b>	<b>7.309</b>	<b>10.579</b>			<b>41.475</b>	<b>1</b>	<b>35.232</b>		

Rank.	Comercial Pesado										
	Modelo	abr/10 (a)	abr/09 (b)	mar/10 (c)	Var a-b	Var a-c	Ac. 10	Part %	Ac. 09	Part %	Var 10-09
1	Mercedes Benz 1418	104	41	169	153,66%	-38,46%	515	9,35%	318	6,34%	61,95%
2	Ford CARGO 1722 E	81	54	172	50,00%	-52,91%	408	7,41%	269	5,36%	51,67%
3	Iveco 170 E	50	49	86	2,04%	-41,86%	273	4,96%	221	4,41%	23,53%
4	Ford F-4000	75	47	70	59,57%	7,14%	266	4,83%	212	4,23%	25,47%
5	Mercedes Benz L-1624	74	52	72	42,31%	2,78%	243	4,41%	299	5,96%	-18,73%
6	Mercedes Benz BMO 368	66		45	N/D	46,67%	216	3,92%		0,00%	N/D
7	Mercedes Benz 710	36	33	63	9,09%	-42,86%	180	3,27%	150	2,99%	20,00%
8	Volkswagen 17220	49	29	40	68,97%	22,50%	142	2,58%	152	3,03%	-6,58%
9	Scania G340	53	26	31	103,85%	70,97%	124	2,25%	154	3,07%	-19,48%
10	Iveco 450 E	40	13	21	207,69%	90,48%	123	2,23%	67	1,34%	83,58%
11	Mercedes Benz LS 1634	30	28	38	7,14%	-21,05%	115	2,09%	142	2,83%	-19,01%
12	Mercedes Benz ATEGO 1725	36	20	33	80,00%	9,09%	114	2,07%	152	3,03%	-25,00%
13	Mercedes Benz OF 1722	47	6	11	683,33%	327,27%	110	2,00%	86	1,72%	27,91%
14	Iveco 490 S	28	19	30	47,37%	-6,67%	103	1,87%	79	1,58%	30,38%
15	Agrale MT12	23	24	37	-4,17%	-37,84%	101	1,83%	157	3,13%	-35,67%
16	Ford CARGO 712	18	24	33	-25,00%	-45,45%	95	1,73%	64	1,28%	48,44%
17	Volkswagen 19320	23	20	24	15,00%	-4,17%	95	1,73%	52	1,04%	82,69%
18	Volkswagen 13180	26	16	26	62,50%	0,00%	94	1,71%	82	1,64%	14,63%
19	Puma de Tat D12	15	15	28	0,00%	-46,43%	90	1,63%	49	0,98%	83,67%
20	Agrale MT15	24		25	N/D	-4,00%	86	1,56%		0,00%	N/D
21	Otros	503	474	566	6,12%	-11,13%	2.013	36,56%	2.309	46,05%	-12,82%
<b>Total</b>		<b>1.401</b>	<b>990</b>	<b>1.620</b>			<b>5.506</b>	<b>1</b>	<b>5.014</b>		

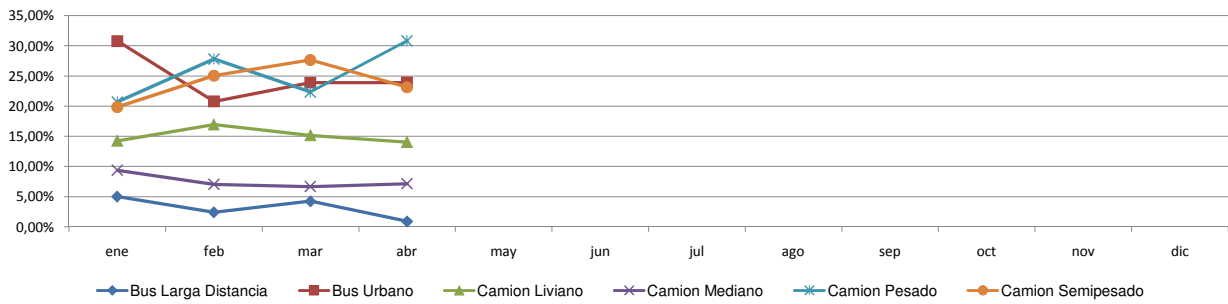


**Patentamientos por Ranking de Livianos y Pesados - Mercado Total**

**Comercial Liviano**



**Comercial Pesado**





**Patentamientos por Provincias y Tipos -**

Distrito	Automovil+Comercial Liviano							Comercial Pesado+Otros Pesados							Mercado Total					
	abr/10 (a)	abr/09 (b)	mar/10 (c)	Var a-b	Var a-c	Ac. 10	Ac. 09	Var 10-09	abr/10 (a)	abr/09 (b)	mar/10 (c)	Var a-b	Var a-c	Ac. 10	Ac. 09	Var 10-09	Ac. 10	Ac. 09	Var 10-09	Part %
CAPITAL FEDERAL	8.798	6.920	9.830	27,14%	-10,50%	38.143	31.222	22,17%	716	349	695	105,16%	3,02%	2.439	1.767	38,03%	40.582	32.989	23,02%	17,55%
GRAN BUENOS AIRES	8.852	6.955	9.987	27,28%	-11,36%	39.728	31.656	25,50%	203	164	257	23,78%	-21,01%	848	736	15,22%	40.576	32.392	25,27%	17,55%
BUENOS AIRES	7.557	6.210	8.548	21,69%	-11,59%	33.824	28.886	17,09%	265	176	295	50,57%	-10,17%	996	940	5,96%	34.820	29.826	16,74%	15,06%
CORDOBA	4.825	4.165	5.287	15,85%	-8,74%	22.640	20.012	13,13%	190	168	196	13,10%	-3,06%	649	747	-13,12%	23.289	20.759	12,19%	10,07%
SANTA FE	3.782	3.257	4.246	16,12%	-10,93%	18.248	15.636	16,71%	187	111	204	68,47%	-8,33%	764	688	11,05%	19.012	16.324	16,47%	8,22%
MENDOZA	1.857	1.396	2.081	33,02%	-10,76%	8.547	6.683	27,89%	103	68	84	51,47%	22,62%	332	373	-10,99%	8.879	7.056	25,84%	3,84%
ENTRE RIOS	1.237	871	1.378	42,02%	-10,23%	5.715	4.597	24,32%	72	59	103	22,03%	-30,10%	302	282	7,09%	6.017	4.879	23,32%	2,60%
TUCUMAN	1.084	717	1.129	51,19%	-3,99%	5.015	3.710	35,18%	64	41	77	56,10%	-16,88%	198	229	-13,54%	5.213	3.939	32,34%	2,26%
CORRIENTES	1.057	748	1.169	41,31%	-9,58%	4.780	3.754	27,33%	81	61	96	32,79%	-15,63%	325	342	-4,97%	5.105	4.096	24,63%	2,21%
CHUBUT	910	806	1.142	12,90%	-20,32%	4.738	4.865	-2,61%	30	46	61	-34,78%	-50,82%	183	202	-9,41%	4.921	5.067	-2,88%	2,13%
SALTA	936	743	1.093	25,98%	-14,36%	4.460	4.007	11,31%	58	76	87	-23,68%	-33,33%	281	302	-6,95%	4.741	4.309	10,03%	2,05%
NEUQUEN	883	729	1.051	21,12%	-15,98%	4.430	3.934	12,61%	32	52	38	-38,46%	-15,79%	158	218	-27,52%	4.588	4.152	10,50%	1,98%
CHACO	594	768	795	-22,66%	-25,28%	3.681	4.198	-12,32%	31	58	55	-46,55%	-43,64%	183	226	-19,03%	3.864	4.424	-12,66%	1,67%
SANTA CRUZ	684	649	823	5,39%	-16,89%	3.446	3.397	1,44%	25	25	18	0,00%	38,89%	89	146	-39,04%	3.535	3.543	-0,23%	1,53%
RIO NEGRO	767	542	804	41,51%	-4,60%	3.383	2.601	30,07%	18	11	23	63,64%	-21,74%	77	80	-3,75%	3.460	2.681	29,06%	1,50%
MISIONES	618	448	681	37,95%	-9,25%	2.984	2.301	29,68%	25	25	22	0,00%	13,64%	92	84	9,52%	3.076	2.385	28,97%	1,33%
JUJUY	578	446	688	29,60%	-15,99%	2.785	2.094	33,00%	75	42	84	78,57%	-10,71%	261	191	36,65%	3.046	2.285	33,30%	1,32%
SAN JUAN	491	411	626	19,46%	-21,57%	2.432	2.050	18,63%	24	18	33	33,33%	-27,27%	115	90	27,78%	2.547	2.140	19,02%	1,10%
SANTIAGO DEL ESTERO	465	352	578	32,10%	-19,55%	2.290	1.910	19,90%	5	13	35	-61,54%	-85,71%	65	77	-15,58%	2.355	1.987	18,52%	1,02%
LA PAMPA	454	423	555	7,33%	-18,20%	2.291	2.084	9,93%	13	14	19	-7,14%	-31,58%	56	70	-20,00%	2.347	2.154	8,96%	1,02%
FORMOSA	448	276	554	62,32%	-19,13%	2.166	1.633	32,64%	29	9	21	222,22%	38,10%	82	70	17,14%	2.248	1.703	32,00%	0,97%
TIERRA DEL FUEGO	485	297	494	63,30%	-1,82%	1.967	1.504	30,78%	21	11	32	90,91%	-34,38%	68	55	23,64%	2.035	1.559	30,53%	0,88%
SAN LUIS	408	307	452	32,90%	-9,73%	1.882	1.518	23,98%	11	10	9	10,00%	22,22%	33	42	-21,43%	1.915	1.560	22,76%	0,83%
CATAMARCA	297	284	342	4,58%	-13,16%	1.487	1.427	4,20%	6	5	2	20,00%	200,00%	20	47	-57,45%	1.507	1.474	2,24%	0,65%
LA RIOJA	292	195	404	49,74%	-27,72%	1.457	1.120	30,09%	14	9	4	55,56%	250,00%	37	36	2,78%	1.494	1.156	29,24%	0,65%



Patentamientos por Provincias y Tipos -

