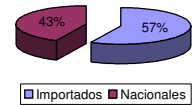




Patentamientos por Marcas - Mercado Total

	mar/08(a)	feb/08(b)	mar/07(c)	mar/06(d)	Var a-b	Var a-c	Var a-d	Ac. 08	Ac. 07	Var 08-07
Automovil	32.542	34.933	35.975	30.393	-6,84%	-9,54%	7,07%	132.769	128.771	3,10%
Comercial Liviano	8.728	8.437	8.232	7.221	3,45%	6,03%	20,87%	33.721	30.310	11,25%
Comercial Pesado	1.741	1.846	1.923	1.683	-5,69%	-9,46%	3,45%	6.197	6.089	1,77%
Otros Pesados	1.198	1.264	1.255	1.122	-5,22%	-4,54%	6,77%	3.819	3.625	5,35%
Total	44.209	46.480	47.385	40.419	-4,89%	-6,70%	9,38%	176.506	168.795	4,57%
Prom. diario	2.456	2.213	2.154	1.757				2.894	2.637	
Dias habiles	18	21	22	23				61	64	

Patentamientos por origen		
	Mar-08	Ac. 08
Importados	26.512	100.700
Nacionales	17.697	75.806



Patentamientos Mensuales												
	ene	feb	mar	abr	may	jun	jul	ago	sep	oct	nov	dic
2008	85.817	46.480	44.209									
2007	82.563	38.847	47.385	41.637	47.235	42.145	50.197	54.288	48.860	49.505	40.642	24.538
Var% 08-07	3,94%	19,65%	-6,70%	-100,00%	-100,00%	-100,00%	-100,00%	-100,00%	-100,00%	-100,00%	-100,00%	-100,00%
2006	65.995	32.438	40.420	34.273	38.302	36.582	36.968	39.132	39.655	36.026	33.285	17.754
2005	52.465	26.364	30.599	32.960	33.469	32.593	34.184	31.926	36.152	30.593	29.393	15.982

Patentamientos por Marcas - Totales										2008	2008	2007	2007	Var
Marca	mar/08(a)	Part %	mar/07(c)	Part %	feb/08(e)	Part %	Var a-c	Var a-e	ene - mar	Part %	ene - mar	Part %	2008-2007	
Volkswagen	7.861	18,29%	9.086	19,68%	7.248	16,04%	-13,48%	8,46%	28.475	16,50%	33.081	20,01%	-13,92%	
Chevrolet	6.205	14,43%	7.154	15,50%	6.623	14,66%	-13,27%	-6,31%	24.911	14,44%	24.011	14,53%	3,75%	
Ford	5.050	11,75%	5.925	12,84%	5.960	13,19%	-14,77%	-15,27%	21.987	12,74%	22.013	13,32%	-0,12%	
Renault	5.574	12,97%	5.202	11,27%	5.272	11,67%	7,15%	5,73%	21.676	12,56%	22.018	13,32%	-1,55%	
Fiat	4.869	11,33%	4.329	9,38%	4.988	11,04%	12,47%	-2,39%	18.654	10,81%	16.159	9,78%	15,44%	
Peugeot	4.204	9,78%	5.441	11,79%	5.060	11,20%	-22,73%	-16,92%	18.378	10,65%	17.897	10,83%	2,69%	
Toyota	1.979	4,60%	2.272	4,92%	2.066	4,57%	-12,90%	-4,21%	8.577	4,97%	8.432	5,10%	1,72%	
Citroen	1.771	4,12%	1.826	3,96%	2.117	4,69%	-3,01%	-16,34%	8.023	4,65%	6.072	3,67%	32,13%	
Honda	1.116	2,60%	879	1,90%	1.599	3,54%	26,96%	-30,21%	5.681	3,29%	2.310	1,40%	145,93%	
Mercedes Benz	1.124	2,61%	1.254	2,72%	1.053	2,33%	-10,37%	6,74%	4.034	2,34%	3.873	2,34%	4,16%	
Suzuki	502	1,17%	798	1,73%	559	1,24%	-37,09%	-10,20%	1.951	1,13%	2.522	1,53%	-22,64%	
Nissan	462	1,07%	238	0,52%	470	1,04%	94,12%	-1,70%	1.658	0,96%	899	0,54%	84,43%	
Hyundai	279	0,65%	132	0,29%	281	0,62%	111,36%	-0,71%	1.136	0,66%	468	0,28%	142,74%	
Iveco	332	0,77%	297	0,64%	342	0,76%	11,78%	-2,92%	1.114	0,65%	973	0,59%	14,49%	
Audi	273	0,64%	269	0,58%	297	0,66%	1,49%	-8,08%	1.109	0,64%	1.041	0,63%	6,53%	
BMW	211	0,49%	248	0,54%	256	0,57%	-14,92%	-17,58%	1.000	0,58%	848	0,51%	17,92%	
Kia	262	0,61%	168	0,36%	168	0,37%	55,95%	55,95%	820	0,48%	540	0,33%	51,85%	
Mitsubishi	112	0,26%	111	0,24%	149	0,33%	0,90%	-24,83%	507	0,29%	388	0,23%	30,67%	
Jeep	125	0,29%	99	0,21%	120	0,27%	26,26%	4,17%	498	0,29%	277	0,17%	79,78%	
Scania	138	0,32%	108	0,23%	114	0,25%	27,78%	21,05%	453	0,26%	332	0,20%	36,45%	
Chrysler	126	0,29%	86	0,19%	72	0,16%	46,51%	75,00%	400	0,23%	299	0,18%	33,78%	
Volvo	110	0,26%	51	0,11%	85	0,19%	115,69%	29,41%	340	0,20%	193	0,12%	76,17%	
Dodge	101	0,23%	30	0,06%	69	0,15%	236,67%	46,38%	326	0,19%	144	0,09%	126,39%	
Subaru	43	0,10%	36	0,08%	50	0,11%	19,44%	-14,00%	162	0,09%	106	0,06%	52,83%	
Agrale	27	0,06%	32	0,07%	52	0,12%	-15,63%	-48,08%	147	0,09%	101	0,06%	45,54%	
Mini	35	0,08%	33	0,07%	33	0,07%	6,06%	6,06%	146	0,08%	95	0,06%	53,68%	
Puma de Tat	30	0,07%	16	0,03%	14	0,03%	87,50%	114,29%	103	0,06%	44	0,03%	134,09%	
Seat	30	0,07%		0,00%	29	0,06%	N/D	3,45%	94	0,05%		0,00%	N/D	
Porsche	13	0,03%	13	0,03%	11	0,02%	0,00%	18,18%	72	0,04%	46	0,03%	56,52%	
Land Rover	20	0,05%	17	0,04%	17	0,04%	17,65%	17,65%	68	0,04%	64	0,04%	6,25%	
Alfa Romeo	4	0,01%	4	0,01%	7	0,02%	0,00%	-42,86%	20	0,01%	17	0,01%	17,65%	
Ferrari		0,00%	1	0,00%		0,00%	-100,00%	N/D	1	0,00%	2	0,00%	-50,00%	
Hummer		0,00%	1	0,00%		0,00%	-100,00%	N/D	1	0,00%	4	0,00%	-75,00%	
Jaguar		0,00%	1	0,00%		0,00%	-100,00%	N/D	1	0,00%	8	0,00%	-87,50%	
Lamborghini		0,00%		0,00%		0,00%	N/D	N/D	1	0,00%		0,00%	N/D	
Isuzu		0,00%		0,00%		0,00%	N/D	N/D		0,00%	8	0,00%	-100,00%	
Maserati		0,00%		0,00%		0,00%	N/D	N/D		0,00%	1	0,00%	-100,00%	
Total	42.988		46.157		45.181				172.524		165.286			

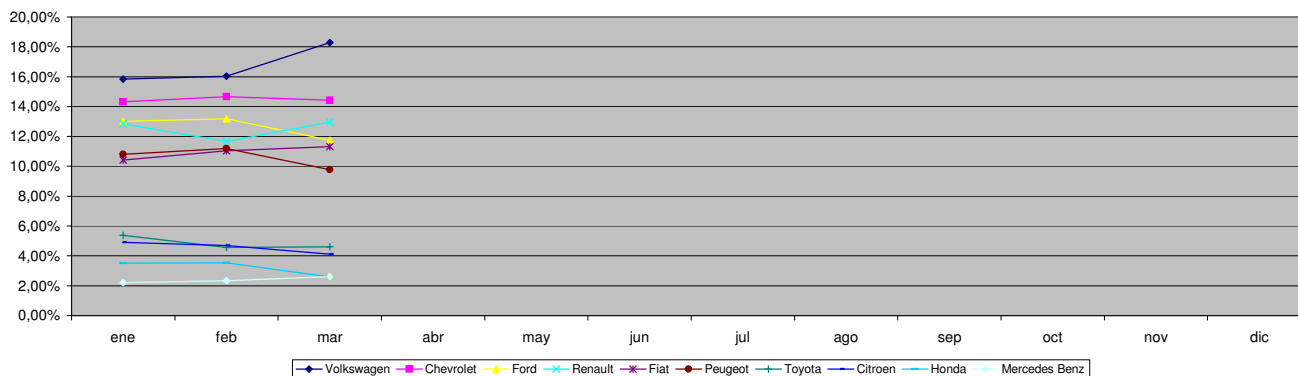


Patentamientos por Marcas - Mercado Total

Patentamientos por Marcas - Autos + Livianos									2008	2008	2007	2007	Var
Marca	mar/08(a)	Part %	mar/07(c)	Part %	feb/08(e)	Part %	Var a-c	Var a-e	ene - mar	Part %	ene - mar	Part %	2008-2007
Volkswagen	7.610	18,44%	8.807	19,92%	6.988	16,11%	-13,59%	8,90%	27.648	16,61%	32.207	20,25%	-14,16%
Chevrolet	6.205	15,04%	7.154	16,18%	6.623	15,27%	-13,27%	-6,31%	24.911	14,96%	24.011	15,09%	3,75%
Renault	5.528	13,40%	5.106	11,55%	5.231	12,06%	8,26%	5,68%	21.528	12,93%	21.537	13,54%	-0,04%
Ford	4.662	11,30%	5.506	12,46%	5.549	12,79%	-15,33%	-15,98%	20.723	12,45%	20.637	12,97%	0,42%
Fiat	4.869	11,80%	4.329	9,79%	4.988	11,50%	12,47%	-2,39%	18.654	11,20%	16.159	10,16%	15,44%
Peugeot	4.204	10,19%	5.441	12,31%	5.060	11,67%	-22,73%	-16,92%	18.378	11,04%	17.897	11,25%	2,69%
Toyota	1.979	4,80%	2.272	5,14%	2.066	4,76%	-12,90%	-4,21%	8.577	5,15%	8.432	5,30%	1,72%
Citroen	1.771	4,29%	1.826	4,13%	2.117	4,88%	-3,01%	-16,34%	8.023	4,82%	6.072	3,82%	32,13%
Honda	1.116	2,70%	879	1,99%	1.599	3,69%	26,96%	-30,21%	5.681	3,41%	2.310	1,45%	145,93%
Suzuki	502	1,22%	798	1,81%	559	1,29%	-37,09%	-10,20%	1.951	1,17%	2.522	1,59%	-22,64%
Mercedes Benz	568	1,38%	481	1,09%	422	0,97%	18,09%	34,60%	1.917	1,15%	1.607	1,01%	19,29%
Nissan	462	1,12%	238	0,54%	470	1,08%	94,12%	-1,70%	1.658	1,00%	899	0,57%	84,43%
Hyundai	273	0,66%	122	0,28%	281	0,65%	123,77%	-2,85%	1.130	0,68%	445	0,28%	153,93%
Audi	273	0,66%	269	0,61%	297	0,68%	1,49%	-8,08%	1.109	0,67%	1.041	0,65%	6,53%
BMW	211	0,51%	248	0,56%	256	0,59%	-14,92%	-17,58%	1.000	0,60%	848	0,53%	17,92%
Kia	262	0,63%	168	0,38%	168	0,39%	55,95%	55,95%	820	0,49%	540	0,34%	51,85%
Mitsubishi	112	0,27%	111	0,25%	149	0,34%	0,90%	-24,83%	507	0,30%	388	0,24%	30,67%
Jeep	125	0,30%	99	0,22%	120	0,28%	26,26%	4,17%	498	0,30%	277	0,17%	79,78%
Chrysler	126	0,31%	86	0,19%	72	0,17%	46,51%	75,00%	400	0,24%	299	0,19%	33,78%
Iveco	111	0,27%	109	0,25%	96	0,22%	1,83%	15,63%	334	0,20%	393	0,25%	-15,01%
Dodge	101	0,24%	30	0,07%	69	0,16%	236,67%	46,38%	326	0,20%	144	0,09%	126,39%
Subaru	43	0,10%	36	0,08%	50	0,12%	19,44%	-14,00%	162	0,10%	106	0,07%	52,83%
Mini	35	0,08%	33	0,07%	33	0,08%	6,06%	6,06%	146	0,09%	95	0,06%	53,68%
Volvo	47	0,11%	22	0,05%	43	0,10%	113,64%	9,30%	141	0,08%	64	0,04%	120,31%
Seat	30	0,07%		0,00%	29	0,07%	N/D	3,45%	94	0,06%		0,00%	N/D
Porsche	13	0,03%	13	0,03%	11	0,03%	0,00%	18,18%	72	0,04%	46	0,03%	56,52%
Land Rover	20	0,05%	17	0,04%	17	0,04%	17,65%	17,65%	68	0,04%	64	0,04%	6,25%
Alfa Romeo	4	0,01%	4	0,01%	7	0,02%	0,00%	-42,86%	20	0,01%	17	0,01%	17,65%
Puma de Tat	4	0,01%		0,00%		0,00%	N/D	N/D	4	0,00%		0,00%	N/D
Ferrari		0,00%	1	0,00%		0,00%	-100,00%	N/D	1	0,00%	2	0,00%	-50,00%
Hummer		0,00%	1	0,00%		0,00%	-100,00%	N/D	1	0,00%	4	0,00%	-75,00%
Jaguar		0,00%	1	0,00%		0,00%	-100,00%	N/D	1	0,00%	8	0,01%	-87,50%
Lamborghini		0,00%		0,00%		0,00%	N/D	N/D	1	0,00%		0,00%	N/D
Isuzu		0,00%		0,00%		0,00%	N/D	N/D		0,00%	8	0,01%	-100,00%
Maserati		0,00%		0,00%		0,00%	N/D	N/D		0,00%	1	0,00%	-100,00%
Total	41.266		44.207		43.370				166.484		159.080		

Patentamientos por Marcas - Camiones + Buses									2008	2008	2007	2007	Var
Marca	mar/08(a)	Part %	mar/07(c)	Part %	feb/08(e)	Part %	Var a-c	Var a-e	ene - mar	Part %	ene - mar	Part %	2008-2007
Mercedes Benz	556	32,29%	773	39,64%	631	34,84%	-28,07%	-11,89%	2.117	35,05%	2.266	36,51%	-6,58%
Ford	388	22,53%	419	21,49%	411	22,69%	-7,40%	-5,60%	1.264	20,93%	1.376	22,17%	-8,14%
Volkswagen	251	14,58%	279	14,31%	260	14,36%	-10,04%	-3,46%	827	13,69%	874	14,08%	-5,38%
Iveco	221	12,83%	188	9,64%	246	13,58%	17,55%	-10,16%	780	12,91%	580	9,35%	34,48%
Scania	138	8,01%	108	5,54%	114	6,29%	27,78%	21,05%	453	7,50%	332	5,35%	36,45%
Volvo	63	3,66%	29	1,49%	42	2,32%	117,24%	50,00%	199	3,29%	129	2,08%	54,26%
Renault	46	2,67%	96	4,92%	41	2,26%	-52,08%	12,20%	148	2,45%	481	7,75%	-69,23%
Agrale	27	1,57%	32	1,64%	52	2,87%	-15,63%	-48,08%	147	2,43%	101	1,63%	45,54%
Puma de Tat	26	1,51%	16	0,82%	14	0,77%	62,50%	85,71%	99	1,64%	44	0,71%	125,00%
Hyundai	6	0,35%	10	0,51%		0,00%	-40,00%	N/D	6	0,10%	23	0,37%	-73,91%
Total	1.722		1.950		1.811				6.040		6.206		

Participacion por Marcas - Evolucion Mensual

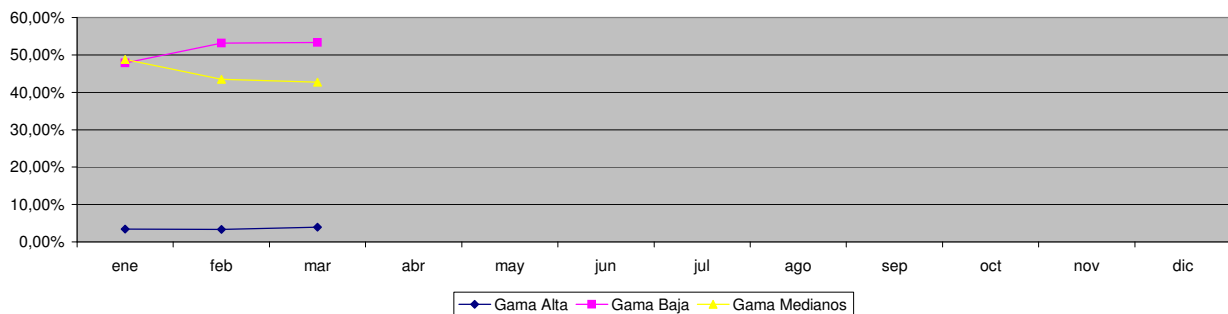




Patentamientos por Ranking de Automoviles - Mercado Total

Ranking Por Modelos - Automoviles											
Rank.	Modelo	mar/08 (a)	mar/07 (b)	feb/08 (c)	Var a-b	Var a-c	Ac. 08	Part %	Ac. 07	Part %	Var 08-07
1	Chevrolet CORSA	2.758	3.133	3.355	-11,97%	-17,79%	10.662	8,03%	9.654	7,50%	10,44%
2	Volkswagen GOL	3.154	3.687	2.842	-14,46%	10,98%	10.157	7,65%	12.501	9,71%	-18,75%
3	Peugeot 206	2.190	2.786	2.373	-21,39%	-7,71%	8.815	6,64%	9.012	7,00%	-2,19%
4	Peugeot 307	1.197	1.468	1.629	-18,46%	-26,52%	5.956	4,49%	5.221	4,05%	14,08%
5	Ford ECOSPORT	1.150	1.043	1.520	10,26%	-24,34%	5.432	4,09%	4.820	3,74%	12,70%
6	Volkswagen SURAN	971	1.088	1.049	-10,75%	-7,44%	4.719	3,55%	5.156	4,00%	-8,48%
7	Renault MEGANE	856	1.137	977	-24,71%	-12,38%	4.328	3,26%	4.691	3,64%	-7,74%
8	Renault CLIO	746	1.690	940	-55,86%	-20,64%	4.062	3,06%	7.981	6,20%	-49,10%
9	Ford FIESTA	915	1.156	1.117	-20,85%	-18,08%	3.940	2,97%	4.351	3,38%	-9,45%
10	Volkswagen FOX/CROSSFOX	1.098	1.113	1.008	-1,35%	8,93%	3.776	2,84%	3.961	3,08%	-4,67%
11	Fiat UNO	891	834	1.138	6,83%	-21,70%	3.718	2,80%	3.444	2,67%	7,96%
12	Fiat SIENA	1.094	624	932	75,32%	17,38%	3.645	2,75%	2.916	2,26%	25,00%
13	Ford FOCUS	809	900	676	-10,11%	19,67%	3.381	2,55%	2.872	2,23%	17,72%
14	Citroen C4	608		798	N/D	-23,81%	3.324	2,50%			0,00%
15	Fiat PALIO	805	1.064	932	-24,34%	-13,63%	3.320	2,50%	4.015	3,12%	-17,31%
16	Chevrolet ASTRA	755	692	684	9,10%	10,38%	3.129	2,36%	2.869	2,23%	9,06%
17	Volkswagen BORA	710	765	650	-7,19%	9,23%	3.109	2,34%	3.050	2,37%	1,93%
18	Renault KANGOO	609	417	656	46,04%	-7,16%	2.899	2,18%	1.495	1,16%	93,91%
19	Chevrolet CORSA II	573	841	557	-31,87%	2,87%	2.619	1,97%	2.870	2,23%	-8,75%
20	Fiat PUNTO	644		634	N/D		2.538	1,91%			0,00%
21	Honda FIT	489	374	751	30,75%	-34,89%	2.527	1,90%	1.055	0,82%	139,53%
22	Chevrolet MERIVA	635	914	495	-30,53%	28,28%	2.323	1,75%	2.724	2,12%	-14,72%
23	Citroen C3	455	976	564	-53,38%	-19,33%	1.953	1,47%	2.904	2,26%	-32,75%
24	Renault MEGANE II	446	508	435	-12,20%	2,53%	1.847	1,39%	2.073	1,61%	-10,90%
25	Honda CIVIC	400	312	539	28,21%	-25,79%	1.820	1,37%	604	0,47%	201,32%
26	Volkswagen VENTO	341	424	378	-19,58%	-9,79%	1.724	1,30%	1.494	1,16%	15,39%
27	Ford KA	274	985	540	-72,18%	-49,26%	1.684	1,27%	2.870	2,23%	-41,32%
28	Chevrolet CORSA SW	307	545	512	-43,67%	-40,04%	1.548	1,17%	1.661	1,29%	-6,80%
29	Renault LOGAN	611		259	N/D		1.542	1,16%			0,00%
30	Toyota COROLLA	218	587	518	-62,86%	-57,92%	1.540	1,16%	1.942	1,51%	-20,70%
31	Fiat PALIO WEEKEND	330	442	347	-25,34%	-4,90%	1.539	1,16%	1.798	1,40%	-14,40%
32	Fiat IDEA	343	539	389	-36,36%	-11,83%	1.472	1,11%	1.372	1,07%	7,29%
33	Suzuki FUN	343	745	382	-53,96%	-10,21%	1.327	1,00%	2.373	1,84%	-44,08%
34	Renault SANDERO	652		484	N/D		1.210	0,91%			0,00%
35	Volkswagen POLO	205	395	284	-48,10%	-27,82%	1.109	0,84%	1.315	1,02%	-15,67%
36	Peugeot PARTNER	184	234	276	-21,37%	-33,33%	991	0,75%	967	0,75%	2,48%
37	Citroen BERLINGO	226	247	267	-8,50%	-15,36%	899	0,68%	1.024	0,80%	-12,21%
38	Chevrolet VECTRA	298	185	189	61,08%	57,67%	885	0,67%	818	0,64%	8,19%
39	Renault SCENIC	236	277	194	-14,80%	21,65%	842	0,63%	1.168	0,91%	-27,91%
40	Volkswagen GOL COUNTRY	363	533	204	-31,89%	77,94%	826	0,62%	1.831	1,42%	-54,89%
41	Citroen PICASSO	196	265	165	-26,04%	18,79%	768	0,58%	1.032	0,80%	-25,58%
42	Nissan TIIDA	190		209	N/D		665	0,50%			0,00%
43	Chevrolet ZAFIRA	128	178	134	-28,09%	-4,48%	603	0,45%	559	0,43%	7,87%
44	Volkswagen GOLF	180	211	146	-14,69%	23,29%	557	0,42%	681	0,53%	-18,21%
45	Audi A3	142	138	141	2,90%	0,71%	530	0,40%	511	0,40%	3,72%
46	Mercedes Benz CLASE C	174	129	109	34,88%	59,63%	502	0,38%	327	0,25%	53,52%
47	BMW 300 SERIES	100	152	130	-34,21%	-23,08%	489	0,37%	445	0,35%	9,89%
48	Volkswagen PASSAT	132	120	115	10,00%	14,78%	408	0,31%	450	0,35%	-9,33%
49	Peugeot 206 SW	114	117	123	-2,56%	-7,32%	392	0,30%	304	0,24%	28,95%
50	Audi A4	70	102	96	-31,37%	-27,08%	352	0,27%	422	0,33%	-16,59%
51	Otros	1.224	903	1.091	35,55%	12,19%	4.363	3,29%	3.168	2,46%	37,72%
Total		32.539	35.975	34.933			132.766	1	128.771		

Autos - Participacion por Segmento





Patentamientos por Ranking de Livianos y Pesados - Mercado Total

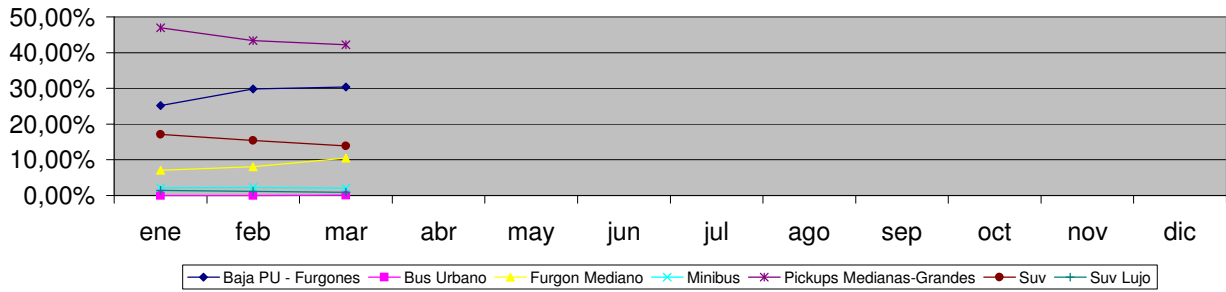
Comercial Liviano												
Rank.	Modelo	mar/08 (a)	mar/07 (b)	feb/08 (c)	Var a-b	Var a-c	Ac. 08	Part %	Ac. 07	Part %	Var 08-07	
1	Toyota HILUX	1.355	1.355	1.175	0,00%	15,32%	5.448	16,16%	5.283	17,43%	3,12%	
2	Ford RANGER	1.190	1.149	1.343	3,57%	-11,39%	4.927	14,61%	4.678	15,43%	5,32%	
3	Renault KANGOO FURGON	929	733	935	26,74%	-0,64%	3.458	10,26%	3.319	10,95%	4,19%	
4	Chevrolet S-10	620	618	582	0,32%	6,53%	2.657	7,88%	2.674	8,82%	-0,64%	
5	Peugeot PARTNER FURGON	411	657	551	-37,44%	-25,41%	1.822	5,40%	1.872	6,18%	-2,67%	
6	Fiat FIORINO	474	417	287	13,67%	65,16%	1.373	4,07%	1.322	4,36%	3,86%	
7	Honda CRV	202	143	295	41,26%	-31,53%	1.261	3,74%	436	1,44%	189,22%	
8	Mercedes Benz SPRINTER	298	275	249	8,36%	19,68%	1.079	3,20%	982	3,24%	9,88%	
9	Renault MASTER	319	224	245	42,41%	30,20%	967	2,87%	568	1,87%	70,25%	
10	Citroen BERLINGO FURGON	258	293	285	-11,95%	-9,47%	953	2,83%	972	3,21%	-1,95%	
11	Ford F 100	186	198	232	-6,06%	-19,83%	825	2,45%	756	2,49%	9,13%	
12	Toyota HILUX SW4	204	178	183	14,61%	11,48%	821	2,43%	685	2,26%	19,85%	
13	Volkswagen SAVEIRO	307	381	183	-19,42%	67,76%	766	2,27%	1.250	4,12%	-38,72%	
14	Nissan FRONTIER	164	140	164	17,14%	0,00%	591	1,75%	565	1,86%	4,60%	
15	Fiat STRADA	90	134	121	-32,84%	-25,62%	400	1,19%	485	1,60%	-17,53%	
16	Hyundai TUCSON	111	28	75	296,43%	48,00%	386	1,14%	90	0,30%	328,89%	
17	Fiat DUCATO	98	88	129	11,36%	-24,03%	372	1,10%	240	0,79%	55,00%	
18	Hyundai SANTA FE	65	27	106	140,74%	-38,68%	352	1,04%	120	0,40%	193,33%	
19	Mitsubishi L200	70	75	91	-6,67%	-23,08%	342	1,01%	274	0,90%	24,82%	
20	Dodge RAM	101	30	69	236,67%	46,38%	326	0,97%	144	0,48%	126,39%	
21	Otros	1.275	1.089	1.137	17,08%	12,14%	4.592	13,62%	3.594	11,86%	27,77%	
Total		8.727	8.232	8.437			33.718	1	30.309			

Comercial Pesado												
Rank.	Modelo	mar/08 (a)	mar/07 (b)	feb/08 (c)	Var a-b	Var a-c	Ac. 08	Part %	Ac. 07	Part %	Var 08-07	
1	Ford CARGO 1722 E	139		168	N/D	-17,26%	485	8,03%		0,00%	N/D	
2	Mercedes Benz LS 1634	122	158	129	-22,78%	-5,43%	398	6,59%	473	7,99%	-15,86%	
3	Mercedes Benz L-1624	88	37	90	137,84%	-2,22%	307	5,08%	39	0,66%	687,18%	
4	Mercedes Benz OF 1418	81	120	88	-32,50%	-7,95%	288	4,77%	162	2,74%	77,78%	
5	Iveco 170 E	69	75	89	-8,00%	-22,47%	270	4,47%	183	3,09%	47,54%	
6	Ford F-4000	76	83	77	-8,43%	-1,30%	258	4,27%	218	3,68%	18,35%	
7	Iveco 450 E	62	74	80	-16,22%	-22,50%	256	4,24%	234	3,95%	9,40%	
8	Volkswagen 17220	88	102	94	-13,73%	-6,38%	253	4,19%	270	4,56%	-6,30%	
9	Ford CARGO 1832 E	64		80	N/D	-20,00%	226	3,74%		0,00%	N/D	
10	Mercedes Benz 1315	21	48	76	-56,25%	-72,37%	185	3,06%	176	2,97%	5,11%	
11	Volkswagen 13180	41	45	57	-8,89%	-28,07%	166	2,75%	172	2,90%	-3,49%	
12	Mercedes Benz 710	27	54	46	-50,00%	-41,30%	161	2,67%	157	2,65%	2,55%	
13	Mercedes Benz L1634	49	75	47	-34,67%	4,26%	154	2,55%	213	3,60%	-27,70%	
14	Mercedes Benz ATEGO 1725	42		41	N/D	2,44%	141	2,33%		0,00%	N/D	
15	Mercedes Benz O-500	22	20	24	10,00%	-8,33%	120	1,99%	108	1,82%	11,11%	
16	Volkswagen 19320	28		29	N/D	-3,45%	119	1,97%		0,00%	N/D	
17	Scania R340	17	25	32	-32,00%	-46,88%	110	1,82%	31	0,52%	254,84%	
18	Volkswagen 17250 E	45		27	N/D	66,67%	110	1,82%		0,00%	N/D	
19	Renault PREMIUM	29	11	25	163,64%	16,00%	97	1,61%	78	1,32%	24,36%	
20	Iveco 490 S	33		32	N/D	3,13%	88	1,46%		0,00%	N/D	
21	Otros	579	973	480	-40,49%	20,63%	1.848	30,60%	3.407	57,54%	-45,76%	
Total		1.722	1.900	1.811			6.040	1	5.921			

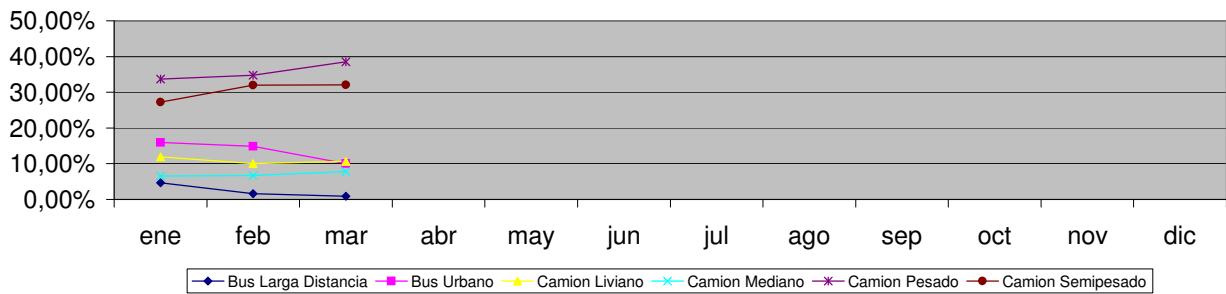


Patentamientos por Ranking de Livianos y Pesados - Mercado Total

Comercial Liviano



Comercial Pesado



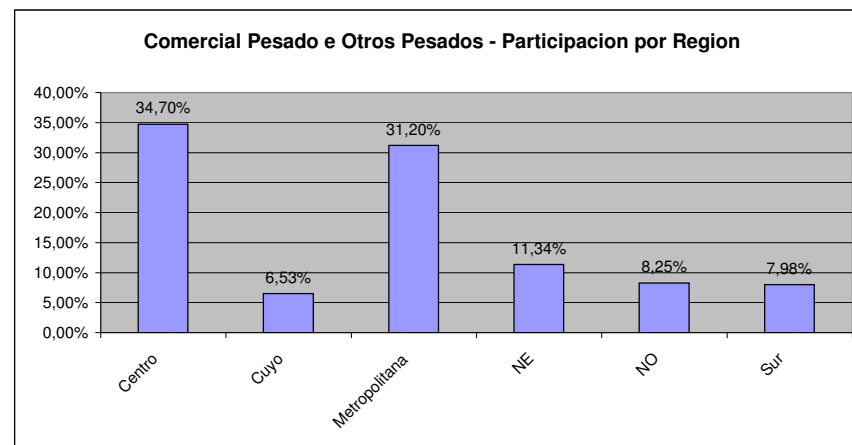
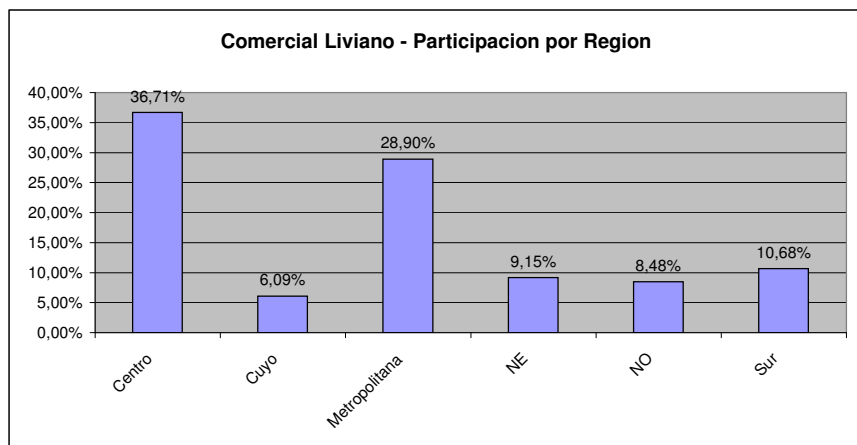
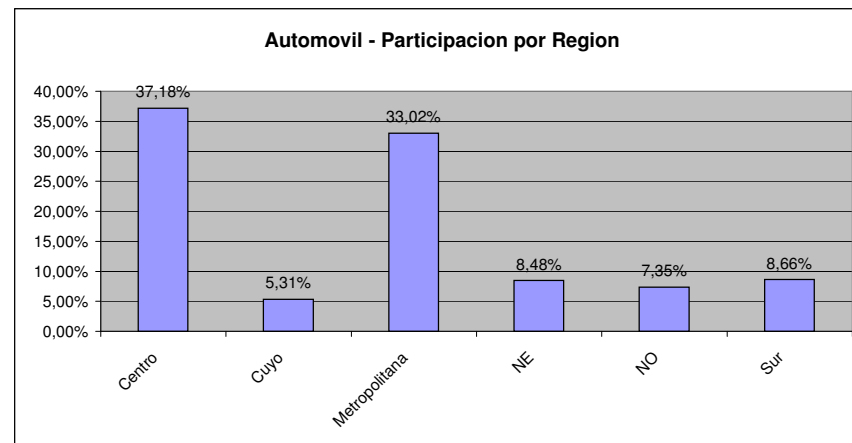
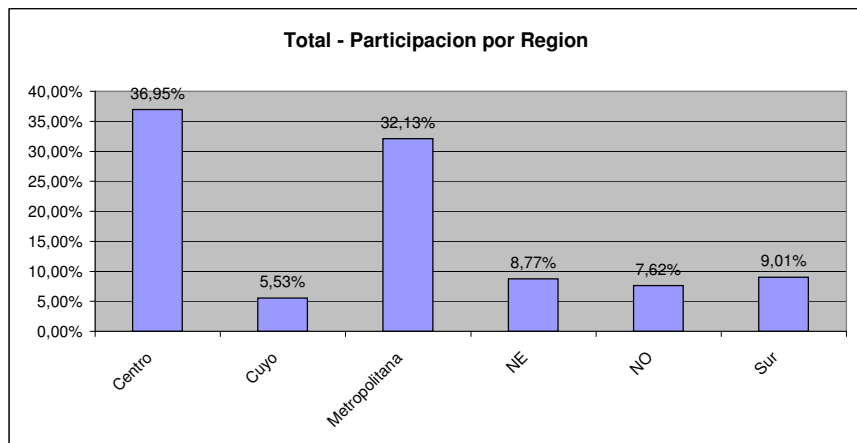


Patentamientos por Provincias y Tipos -

Distrito	Automovil+Comercial Liviano							Comercial Pesado+Otros Pesados							Mercado Total					
	mar/08 (a)	mar/07 (b)	feb/08 (c)	Var a-b	Var a-c	Ac. 08	Ac. 07	Var 08-07	mar/08 (a)	mar/07 (b)	feb/08 (c)	Var a-b	Var a-c	Ac. 08	Ac. 07	Var 08-07	Ac. 08	Ac. 07	Var 08-07	Part %
CAPITAL FEDERAL	7.681	9.135	7.734	-15,92%	-0,69%	28.260	30.480	-7,28%	630	716	637	-12,01%	-1,10%	2.256	2.445	-7,73%	30.516	32.925	-7,32%	17,29%
BUENOS AIRES	6.299	6.959	6.734	-9,48%	-6,46%	25.356	24.367	4,06%	420	521	414	-19,39%	1,45%	1.334	1.253	6,46%	26.690	25.620	4,18%	15,12%
GRAN BUENOS AIRES	6.658	7.445	6.796	-10,57%	-2,03%	25.321	25.383	-0,24%	261	344	252	-24,13%	3,57%	869	1.048	-17,08%	26.190	26.431	-0,91%	14,84%
CORDOBA	4.238	4.099	4.741	3,39%	-10,61%	18.554	15.881	16,83%	344	287	328	19,86%	4,88%	1.002	770	30,13%	19.556	16.651	17,45%	11,08%
SANTA FE	3.847	3.743	4.043	2,78%	-4,85%	15.660	14.338	9,22%	324	271	327	19,56%	-0,92%	1.053	849	24,03%	16.713	15.187	10,05%	9,47%
MENDOZA	1.418	1.416	1.439	0,14%	-1,46%	6.166	5.554	11,02%	123	137	143	-10,22%	-13,99%	477	450	6,00%	6.643	6.004	10,64%	3,76%
ENTRE RIOS	1.012	1.047	1.046	-3,34%	-3,25%	4.278	4.007	6,76%	105	109	109	-3,67%	-3,67%	359	317	13,25%	4.637	4.324	7,24%	2,63%
CHUBUT	1.086	1.049	1.088	3,53%	-0,18%	4.100	3.882	5,62%	92	125	93	-26,40%	-1,08%	272	314	-13,38%	4.372	4.196	4,19%	2,48%
NEUQUEN	1.028	941	1.094	9,25%	-6,03%	4.027	3.561	13,09%	41	68	81	-39,71%	-49,38%	208	252	-17,46%	4.235	3.813	11,07%	2,40%
SALTA	821	934	795	-12,10%	3,27%	3.399	3.347	1,55%	80	71	81	12,68%	-1,23%	267	233	14,59%	3.666	3.580	2,40%	2,08%
TUCUMAN	804	862	790	-6,73%	1,77%	3.435	3.263	5,27%	59	74	85	-20,27%	-30,59%	191	176	8,52%	3.626	3.439	5,44%	2,05%
CORRIENTES	671	713	850	-5,89%	-21,06%	3.249	2.906	11,80%	94	75	102	25,33%	-7,84%	359	271	32,47%	3.608	3.177	13,57%	2,04%
CHACO	701	590	868	18,81%	-19,24%	3.184	2.527	26,00%	64	45	86	42,22%	-25,58%	259	183	41,53%	3.443	2.710	27,05%	1,95%
SANTA CRUZ	709	675	780	5,04%	-9,10%	2.723	2.366	15,09%	47	45	58	4,44%	-18,97%	145	155	-6,45%	2.868	2.521	13,76%	1,62%
RIO NEGRO	627	725	652	-13,52%	-3,83%	2.490	2.434	2,30%	19	18	34	5,56%	-44,12%	90	80	12,50%	2.580	2.514	2,63%	1,46%
MISIONES	461	557	522	-17,24%	-11,69%	2.337	2.406	-2,87%	32	32	33	0,00%	-3,03%	104	120	-13,33%	2.441	2.526	-3,37%	1,38%
LA PAMPA	516	485	539	6,39%	-4,27%	2.176	1.867	16,55%	19	32	30	-40,63%	-36,67%	87	96	-9,38%	2.263	1.963	15,28%	1,28%
JUJUY	395	436	479	-9,40%	-17,54%	1.869	1.680	11,25%	50	71	63	-29,58%	-20,63%	232	263	-11,79%	2.101	1.943	8,13%	1,19%
SANTIAGO DEL ESTERO	402	357	401	12,61%	0,25%	1.817	1.483	22,52%	29	25	21	16,00%	38,10%	86	86	0,00%	1.903	1.569	21,29%	1,08%
SAN JUAN	426	420	359	1,43%	18,66%	1.714	1.536	11,59%	41	35	44	17,14%	-6,82%	141	99	42,42%	1.855	1.635	13,46%	1,05%
TIERRA DEL FUEGO	449	564	505	-20,39%	-11,09%	1.756	1.724	1,86%	23	42	36	-45,24%	-36,11%	84	93	-9,68%	1.840	1.817	1,27%	1,04%
FORMOSA	254	253	310	0,40%	-18,06%	1.301	1.067	21,93%	26	12	18	116,67%	44,44%	55	87	-36,78%	1.356	1.154	17,50%	0,77%
CATAMARCA	316	253	280	24,90%	12,86%	1.292	1.009	28,05%	4	8	12	-50,00%	-66,67%	27	25	8,00%	1.319	1.034	27,56%	0,75%
SAN LUIS	268	340	319	-21,18%	-15,99%	1.222	1.196	2,17%	11	10	11	10,00%	0,00%	36	27	33,33%	1.258	1.223	2,86%	0,71%
LA RIOJA	183	209	206	-12,44%	-11,17%	804	817	-1,59%	1	5	12	-80,00%	-91,67%	23	22	4,55%	827	839	-1,43%	0,47%



Patentamientos por Provincias y Tipos -





Patentamientos por Regiones de Buenos Aires

Subregion	Automovil+Comercial Liviano							Comercial Pesado+Otros Pesados							Mercado Total				
	mar/08 (a)	mar/07 (b)	feb/08 (c)	Var a-b	Var a-c	Ac. 08	Ac. 07	Var 08-07	mar/08 (a)	mar/07 (b)	feb/08 (c)	Var a-b	Var a-c	Ac. 08	Ac. 07	Var 08-07	Ac. 08	Ac. 07	Var 08-07
GRAN BUENOS AIRES-OESTE	2.676	2.905	2.701	-7,88%	-0,93%	10.396	10.266	1,27%	102	128	114	-20,31%	-10,53%	384	369	4,07%	10.780	10.635	1,36%
GRAN BUENOS AIRES-SUR	2.400	2.681	2.474	-10,48%	-2,99%	9.115	9.087	0,31%	112	157	85	-28,66%	31,76%	331	499	-33,67%	9.446	9.586	-1,46%
GRAN BUENOS AIRES-NORTE	1.582	1.859	1.621	-14,90%	-2,41%	5.810	6.030	-3,65%	47	59	53	-20,34%	-11,32%	154	180	-14,44%	5.964	6.210	-3,96%
BUENOS AIRES-NORTE	1.338	1.418	1.372	-5,64%	-2,48%	5.465	5.209	4,91%	112	112	99	0,00%	13,13%	317	275	15,27%	5.782	5.484	5,43%
BUENOS AIRES-ATLANTICA	1.293	1.417	1.371	-8,75%	-5,69%	4.946	4.622	7,01%	57	52	41	9,62%	39,02%	158	141	12,06%	5.104	4.763	7,16%
BUENOS AIRES-OESTE	1.013	1.056	1.107	-4,07%	-8,49%	4.311	4.174	3,28%	122	174	115	-29,89%	6,09%	392	362	8,29%	4.703	4.536	3,68%
BUENOS AIRES-LA PLATA	1.006	1.398	1.185	-28,04%	-15,11%	4.160	4.476	-7,06%	16	25	26	-36,00%	-38,46%	66	70	-5,71%	4.226	4.546	-7,04%
BUENOS AIRES-SUR	848	833	897	1,80%	-5,46%	3.361	2.893	16,18%	61	62	67	-1,61%	-8,96%	190	158	20,25%	3.551	3.051	16,39%
BUENOS AIRES-CENTRO	801	837	802	-4,30%	-0,12%	3.113	2.993	4,01%	52	96	66	-45,83%	-21,21%	211	247	-14,57%	3.324	3.240	2,59%



Patentamientos por Regiones de Buenos Aires

