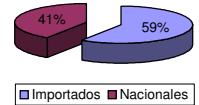




Patentamientos por Marcas - Mercado Total

	sep/08(a)	ago/08(b)	sep/07(c)	sep/06(d)	Var a-b	Var a-c	Var a-d	Ac. 08	Ac. 07	Var 08-07
Automovil	41.238	37.807	36.552	29.304	9,08%	12,82%	40,72%	375.528	341.213	10,06%
Comercial Liviano	11.109	10.191	8.996	7.120	9,01%	23,49%	56,03%	98.025	82.386	18,98%
Comercial Pesado	2.173	1.856	2.027	2.211	17,08%	7,20%	-1,72%	18.668	17.989	3,77%
Otros Pesados	1.271	1.256	1.282	1.009	1,19%	-0,86%	25,97%	11.700	11.506	1,69%
Total	55.791	51.110	48.857	39.644	9,16%	14,19%	40,73%	503.921	453.094	11,22%
Prom. diario	2.536	2.434	2.443	1.888				2.695	2.436	
Dias habiles	22	21	20	21				187	186	

Patentamientos por origen		
	08-Sep	Ac. 08
Importados	34.108	297.831
Nacionales	21.683	206.019



Patentamientos Mensuales

	ene	feb	mar	abr	may	jun	jul	ago	sep	oct	nov	dic
2008	85.811	46.477	44.277	56.150	56.809	49.082	58.414	51.110	55.791			
2007	82.552	38.841	47.380	41.626	47.232	42.139	50.182	54.285	48.857	49.497	40.640	24.528
Var% 08-07	3,95%	19,66%	-6,55%	34,89%	20,28%	16,48%	16,40%	-5,85%	14,19%	-100,00%	-100,00%	-100,00%
2006	65.984	32.426	40.400	34.249	38.284	36.569	36.949	39.123	39.644	36.009	33.252	17.725
2005	52.400	26.323	30.558	32.929	33.443	32.556	34.172	31.908	36.126	30.578	29.364	15.968

Patentamientos por Marcas - Totales

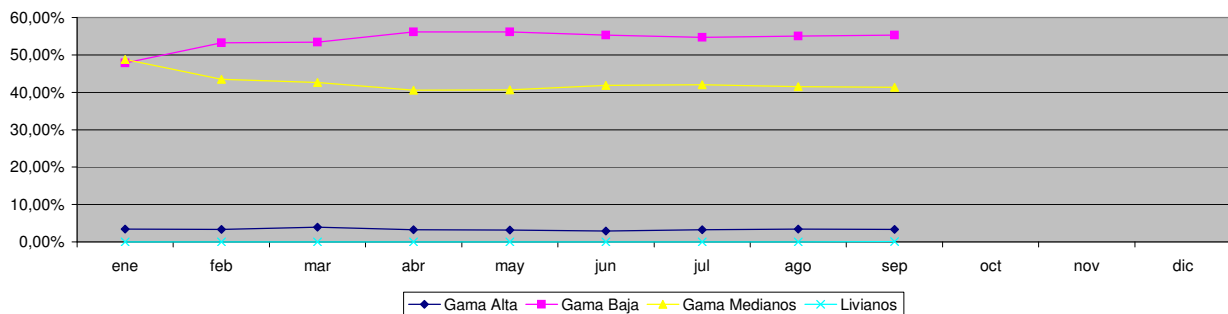
Marca	sep/08(a)	Part %	sep/07(c)	Part %	ago/08(e)	Part %	Var a-c	Var a-e	2008 ene - sep	2008 Part %	2007 ene - sep	2007 Part %	2008-2007 Var
Volkswagen	11.233	20,61%	9.206	19,36%	9.835	19,74%	22,02%	14,21%	90.918	18,48%	86.025	19,45%	5,69%
Chevrolet	7.540	13,84%	7.027	14,78%	7.129	14,31%	7,30%	5,77%	69.761	14,18%	66.026	14,93%	5,66%
Ford	6.617	12,14%	6.885	14,48%	6.114	12,27%	-3,89%	8,23%	61.052	12,41%	59.367	13,42%	2,84%
Renault	6.629	12,16%	5.498	11,56%	4.931	9,90%	20,57%	34,44%	57.877	11,77%	54.777	12,39%	5,66%
Fiat	5.558	10,20%	4.731	9,95%	5.285	10,61%	17,48%	5,17%	52.345	10,64%	44.499	10,06%	17,63%
Peugeot	4.595	8,43%	4.502	9,47%	4.833	9,70%	2,07%	-4,92%	49.434	10,05%	46.280	10,46%	6,82%
Toyota	2.839	5,21%	2.469	5,19%	2.709	5,44%	14,99%	4,80%	25.264	5,14%	22.604	5,11%	11,77%
Citroen	1.585	2,91%	1.818	3,82%	1.511	3,03%	-12,82%	4,90%	18.501	3,76%	16.727	3,78%	10,61%
Honda	1.664	3,05%	1.134	2,38%	1.702	3,42%	46,74%	-2,23%	16.108	3,27%	8.349	1,89%	92,93%
Mercedes Benz	1.376	2,52%	1.168	2,46%	1.236	2,48%	17,81%	11,33%	11.836	2,41%	10.635	2,40%	11,29%
Suzuki	895	1,64%	935	1,97%	934	1,87%	-4,28%	-4,18%	7.472	1,52%	7.895	1,79%	-5,36%
Nissan	672	1,23%	298	0,63%	627	1,26%	125,50%	7,18%	5.477	1,11%	2.618	0,59%	109,21%
Hyundai	564	1,03%	206	0,43%	533	1,07%	173,79%	5,82%	4.082	0,83%	1.530	0,35%	166,80%
Iveco	408	0,75%	310	0,65%	388	0,78%	31,61%	5,15%	3.712	0,75%	2.823	0,64%	31,49%
Kia	481	0,88%	164	0,34%	355	0,71%	193,29%	35,49%	2.932	0,60%	1.446	0,33%	102,77%
Audi	264	0,48%	243	0,51%	305	0,61%	8,64%	-13,44%	2.788	0,57%	2.277	0,51%	22,44%
BMW	251	0,46%	223	0,47%	266	0,53%	12,56%	-5,64%	2.431	0,49%	1.951	0,44%	24,60%
Mitsubishi	136	0,25%	76	0,16%	163	0,33%	78,95%	-16,56%	1.503	0,31%	932	0,21%	61,27%
Jeep	136	0,25%	96	0,20%	146	0,29%	41,67%	-6,85%	1.367	0,28%	924	0,21%	47,94%
Scania	167	0,31%	128	0,27%	133	0,27%	30,47%	25,56%	1.355	0,28%	1.226	0,28%	10,52%
Chrysler	286	0,52%	110	0,23%	154	0,31%	160,00%	85,71%	1.341	0,27%	817	0,18%	64,14%
Volvo	97	0,18%	64	0,13%	90	0,18%	51,56%	7,78%	983	0,20%	638	0,14%	54,08%
Dodge	134	0,25%	61	0,13%	120	0,24%	119,67%	11,67%	905	0,18%	370	0,08%	144,59%
Agrale	67	0,12%	42	0,09%	72	0,14%	59,52%	-6,94%	487	0,10%	358	0,08%	36,03%
Subaru	65	0,12%	42	0,09%	47	0,09%	54,76%	38,30%	454	0,09%	332	0,08%	36,75%
Mini	40	0,07%	38	0,08%	45	0,09%	5,26%	-11,11%	377	0,08%	313	0,07%	20,45%
Seat	73	0,13%	24	0,05%	51	0,10%	204,17%	43,14%	374	0,08%	38	0,01%	884,21%
Puma de Tat	22	0,04%	21	0,04%	14	0,03%	4,76%	57,14%	237	0,05%	149	0,03%	59,06%
Chery	77	0,14%		0,00%	65	0,13%	N/D	18,46%	183	0,04%		0,00%	N/D
Land Rover	12	0,02%	21	0,04%	18	0,04%	-42,86%	-33,33%	179	0,04%	174	0,04%	2,87%
Porsche	13	0,02%	14	0,03%	7	0,01%	-7,14%	85,71%	163	0,03%	92	0,02%	77,17%
Alfa Romeo		0,00%	4	0,01%	2	0,00%	-100,00%	-100,00%	27	0,01%	55	0,01%	-50,91%
Ferrari		0,00%		0,00%		0,00%	N/D	N/D	4	0,00%	4	0,00%	0,00%
Hummer		0,00%		0,00%		0,00%	N/D	N/D	2	0,00%	7	0,00%	-71,43%
Jaguar		0,00%	1	0,00%	1	0,00%	-100,00%	-100,00%	2	0,00%	12	0,00%	-83,33%
Lamborghini		0,00%		0,00%		0,00%	N/D	N/D	1	0,00%		0,00%	N/D
Isuzu		0,00%		0,00%		0,00%	N/D	N/D		0,00%	9	0,00%	-100,00%
Lexus		0,00%		0,00%		0,00%	N/D	N/D		0,00%	1	0,00%	-100,00%
Maserati		0,00%		0,00%		0,00%	N/D	N/D		0,00%	3	0,00%	-100,00%
Total	54.496		47.559		49.821				491.934		442.283		



Patentamientos por Ranking de Automoviles - Mercado Total

Rank.	Modelo	Ranking Por Modelos - Automoviles									
		sep/08 (a)	sep/07 (b)	ago/08 (c)	Var a-b	Var a-c	Ac. 08	Part %	Ac. 07	Part %	Var 08-07
1	Volkswagen GOL	4.152	3.198	3.964	29,83%	4,74%	35.097	9,35%	33.006	9,67%	6,34%
2	Chevrolet CORSA	2.975	2.901	2.726	2,55%	9,13%	28.173	7,50%	27.288	8,00%	3,24%
3	Peugeot 206	1.747	1.966	2.674	-11,14%	-34,67%	25.028	6,66%	22.030	6,46%	13,61%
4	Ford ECOSPORT	1.508	1.667	1.462	-9,54%	3,15%	14.328	3,82%	12.662	3,71%	13,16%
5	Renault CLIO	1.905	1.684	1.299	13,12%	46,65%	14.084	3,75%	17.575	5,15%	-19,86%
6	Peugeot 307	1.329	1.360	1.116	-2,28%	19,09%	13.859	3,69%	13.105	3,84%	5,75%
7	Volkswagen SURAN	1.362	1.418	1.269	-3,95%	7,33%	12.980	3,46%	12.196	3,57%	6,43%
8	Ford FIESTA	1.427	1.569	1.226	-9,05%	16,39%	11.428	3,04%	13.218	3,87%	-13,54%
9	Fiat SIENA	1.293	742	1.310	74,26%	-1,30%	11.281	3,00%	8.006	2,35%	40,91%
10	Volkswagen FOX/CROSSFOX	1.110	1.416	1.084	-21,61%	2,40%	11.041	2,94%	10.994	3,22%	0,43%
11	Volkswagen BORA	1.445	477	1.307	202,94%	10,56%	10.360	2,76%	7.014	2,06%	47,70%
12	Fiat PALIO	1.193	1.095	1.082	8,95%	10,26%	10.029	2,67%	11.477	3,36%	-12,62%
13	Fiat UNO	947	1.099	971	-13,83%	-2,47%	9.731	2,59%	9.163	2,69%	6,20%
14	Renault MEGANE	1.127	798	845	41,23%	33,37%	9.617	2,56%	11.047	3,24%	-12,94%
15	Chevrolet ASTRA	1.036	686	1.170	51,02%	-11,45%	9.425	2,51%	7.738	2,27%	21,80%
16	Ford FOCUS	715	781	796	-8,45%	-10,18%	8.012	2,13%	7.804	2,29%	2,67%
17	Ford KA	831	1.023	906	-18,77%	-8,28%	7.605	2,03%	7.601	2,23%	0,05%
18	Chevrolet CORSA II	1.060	823	856	28,80%	23,83%	7.588	2,02%	7.378	2,16%	2,85%
19	Citroen C4	502	569	552	-11,78%	-9,06%	7.261	1,93%	1.855	0,54%	291,43%
20	Honda FIT	590	544	651	8,46%	-9,37%	6.678	1,78%	3.668	1,07%	82,06%
21	Renault KANGOO	710	617	635	15,07%	11,81%	6.625	1,76%	4.080	1,20%	62,38%
22	Fiat PUNTO	540	75	572	620,00%	-5,59%	6.466	1,72%	75	0,02%	8521,33%
23	Chevrolet MERIVA	529	716	513	-26,12%	3,12%	6.303	1,68%	7.399	2,17%	-14,81%
24	Toyota COROLLA	795	642	734	23,83%	8,31%	6.163	1,64%	5.610	1,64%	9,86%
25	Suzuki FUN	679	805	782	-15,65%	-13,17%	5.691	1,52%	7.123	2,09%	-20,10%
26	Honda CIVIC	517	263	449	96,58%	15,14%	4.847	1,29%	2.537	0,74%	91,05%
27	Volkswagen VENTO	443	458	506	-3,28%	-12,45%	4.555	1,21%	4.012	1,18%	13,53%
28	Renault MEGANE II	618	636	346	-2,83%	78,61%	4.476	1,19%	5.434	1,59%	-17,63%
29	Chevrolet CORSA SW	383	418	455	-8,37%	-15,82%	4.176	1,11%	4.581	1,34%	-8,84%
30	Renault LOGAN	355	150	255	136,67%	39,22%	4.084	1,09%	1.276	0,37%	220,06%
31	Citroen C3	196	534	184	-63,30%	6,52%	3.783	1,01%	6.613	1,94%	-42,79%
32	Fiat IDEA	324	465	297	-30,32%	9,09%	3.711	0,99%	4.153	1,22%	-10,64%
33	Renault SANDERO	316		279	N/D	13,26%	3.643	0,97%		0,00%	N/D
34	Volkswagen GOL COUNTRY	427	641	394	-33,39%	8,38%	3.284	0,87%	4.529	1,33%	-27,49%
35	Volkswagen POLO	292	430	308	-32,09%	-5,19%	3.122	0,83%	4.154	1,22%	-24,84%
36	Fiat PALIO WEEKEND	378	505	135	-25,15%	180,00%	3.100	0,83%	4.746	1,39%	-34,68%
37	Chevrolet VECTRA	307	378	249	-18,78%	23,29%	2.927	0,78%	2.189	0,64%	33,71%
38	Nissan TIIDA	424		329	N/D	28,88%	2.608	0,68%		0,00%	N/D
39	Peugeot PARTNER	207	319	222	-35,11%	-6,76%	2.353	0,63%	2.920	0,86%	-19,42%
40	Citroen BERLINGO	225	235	197	-4,26%	14,21%	2.265	0,60%	2.553	0,75%	-11,28%
41	Citroen PICASSO	162	130	176	24,62%	-7,95%	2.027	0,54%	2.232	0,65%	-9,18%
42	Renault SCENIC	164	214	161	-23,36%	1,86%	2.002	0,53%	2.472	0,72%	-19,01%
43	Chevrolet ZAFIRA	169	154	157	9,74%	7,64%	1.692	0,45%	1.403	0,41%	20,60%
44	Volkswagen GOLF	169	127	148	33,07%	14,19%	1.620	0,43%	1.315	0,39%	23,19%
45	Audi A3	99	95	160	4,21%	-38,13%	1.462	0,39%	1.085	0,32%	34,75%
46	Mercedes Benz CLASE C	185	83	166	122,89%	11,45%	1.444	0,38%	752	0,22%	92,02%
47	Chrysler PT CRUISER	265	99	146	167,68%	81,51%	1.171	0,31%	663	0,19%	76,62%
48	BMW 300 SERIES	107	128	119	-16,41%	-10,08%	1.110	0,30%	1.003	0,29%	10,67%
49	Volkswagen PASSAT	94	105	56	-10,48%	67,86%	1.002	0,27%	1.031	0,30%	-2,81%
50	Peugeot 206 SW	235	88	52	167,05%	351,92%	944	0,25%	859	0,25%	9,90%
51	Otros	2.670	1.226	1.359	117,78%	96,47%	13.267	3,53%	9.589	2,81%	38,36%
Total		41.238	36.552	37.807			375.528	1	341.213		

Autos - Participacion por Segmento





09/2008

Informe confidencial para uso
exclusivo de los asociados

Patentamientos por Ranking de Livianos y Pesados - Mercado Total

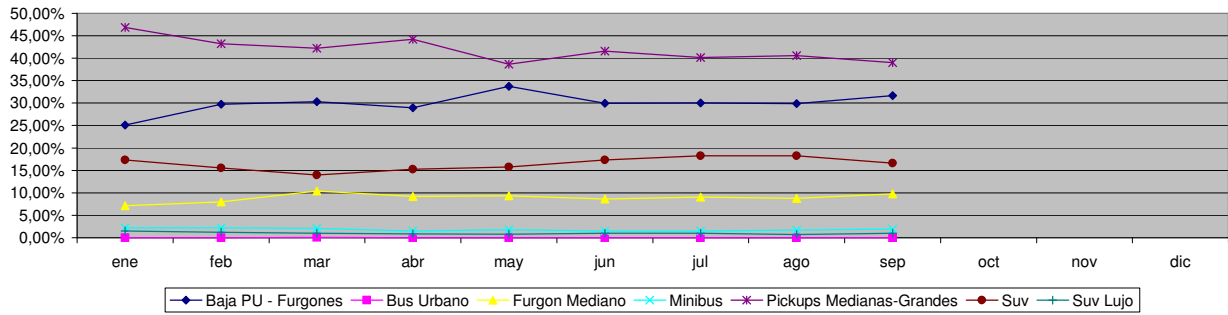
Comercial Liviano											
Rank.	Modelo	sep/08 (a)	sep/07 (b)	ago/08 (c)	Var a-b	Var a-c	Ac. 08	Part %	Ac. 07	Part %	Var 08-07
1	Toyota HILUX	1.673	1.416	1.623	18,15%	-3,08%	15.258	15,57%	13.589	16,49%	12,28%
2	Ford RANGER	1.277	1.137	1.153	12,31%	10,75%	12.705	12,96%	11.230	13,63%	13,13%
3	Renault KANGOO FURGON	1.033	872	831	18,46%	24,31%	9.612	9,81%	8.534	10,36%	12,63%
4	Chevrolet S-10	854	908	808	-5,95%	5,69%	7.624	7,78%	7.615	9,24%	0,12%
5	Peugeot PARTNER FURGON	730	546	632	33,70%	15,51%	5.757	5,87%	5.667	6,88%	1,59%
6	Fiat FIORINO	569	430	599	32,33%	-5,01%	5.126	5,23%	3.716	4,51%	37,94%
7	Honda CRV	495	286	543	73,08%	-8,84%	4.138	4,22%	1.606	1,95%	157,66%
8	Volkswagen SAVEIRO	468	434	408	7,83%	14,71%	3.175	3,24%	3.530	4,28%	-10,06%
9	Mercedes Benz SPRINTER	325	199	307	63,32%	5,86%	3.063	3,12%	2.361	2,87%	29,73%
10	Citroen BERLINGO FURGON	437	341	327	28,15%	33,64%	2.773	2,83%	3.132	3,80%	-11,46%
11	Renault MASTER	249	312	176	-20,19%	41,48%	2.368	2,42%	1.871	2,27%	26,56%
12	Toyota HILUX SW4	194	194	170	0,00%	14,12%	2.005	2,05%	1.822	2,21%	10,04%
13	Ford F 100	171	238	144	-28,15%	18,75%	1.919	1,96%	2.283	2,77%	-15,94%
14	Nissan FRONTIER	123	180	162	-31,67%	-24,07%	1.708	1,74%	1.624	1,97%	5,17%
15	Hyundai TUCSON	163	38	157	328,95%	3,82%	1.355	1,38%	368	0,45%	268,21%
16	Chevrolet CAPTIVA	114		146	N/D	-21,92%	1.160	1,18%		0,00%	N/D
17	Mitsubishi L200	101	49	127	106,12%	-20,47%	1.116	1,14%	649	0,79%	71,96%
18	Iveco DAILY	119	90	125	32,22%	-4,80%	1.110	1,13%	1.117	1,36%	-0,63%
19	Hyundai SANTA FE	114	39	124	192,31%	-8,06%	1.033	1,05%	280	0,34%	268,93%
20	Fiat DUCATO	109	79	53	37,97%	105,66%	928	0,95%	678	0,82%	36,87%
21	Otros	1.791	1.208	1.576	48,26%	13,64%	14.092	14,38%	10.714	13,00%	31,53%
Total		11.109	8.996	10.191			98.025	1	82.386		

Comercial Pesado											
Rank.	Modelo	sep/08 (a)	sep/07 (b)	ago/08 (c)	Var a-b	Var a-c	Ac. 08	Part %	Ac. 07	Part %	Var 08-07
1	Ford CARGO 1722 E	121	90	98	34,44%	23,47%	1.313	7,14%	435	2,47%	201,84%
2	Iveco 170 E	114	83	111	37,35%	2,70%	1.010	5,49%	572	3,25%	76,57%
3	Mercedes Benz LS 1634	88	102	53	-13,73%	66,04%	923	5,02%	1.333	7,57%	-30,76%
4	Mercedes Benz OF 1418	47	127	133	-62,99%	-64,66%	910	4,95%	914	5,19%	-0,44%
5	Ford F-4000	126	64	72	96,88%	75,00%	846	4,60%	616	3,50%	37,34%
6	Volkswagen 17220	98	113	100	-13,27%	-2,00%	772	4,20%	853	4,84%	-9,50%
7	Mercedes Benz L-1624	109	131	92	-16,79%	18,48%	761	4,14%	855	4,85%	-10,99%
8	Iveco 450 E	66	90	50	-26,67%	32,00%	624	3,39%	705	4,00%	-11,49%
9	Mercedes Benz 1315	49	73	61	-32,88%	-19,67%	575	3,13%	456	2,59%	26,10%
10	Mercedes Benz ATEGO 1725	64	40	63	60,00%	1,59%	565	3,07%	63	0,36%	796,83%
11	Ford CARGO 1832 E	53	48	36	10,42%	47,22%	541	2,94%	253	1,44%	113,83%
12	Mercedes Benz 710	59	48	73	22,92%	-19,18%	493	2,68%	441	2,50%	11,79%
13	Volkswagen 19320	37	29	31	27,59%	19,35%	381	2,07%	137	0,78%	178,10%
14	Mercedes Benz L1634	33	59	34	-44,07%	-2,94%	379	2,06%	597	3,39%	-36,52%
15	Volkswagen 17250 E	47	60	35	-21,67%	34,29%	361	1,96%	127	0,72%	184,25%
16	Iveco 490 S	41		52	N/D	-21,15%	355	1,93%		0,00%	N/D
17	Mercedes Benz AXOR 1933	47	35	41	34,29%	14,63%	352	1,92%	55	0,31%	540,00%
18	Mercedes Benz O-500	60	43	19	39,53%	215,79%	318	1,73%	310	1,76%	2,58%
19	Volkswagen 13180	14	77	8	-81,82%	75,00%	314	1,71%	548	3,11%	-42,70%
20	Renault PREMIUM	21	33	28	-36,36%	-25,00%	309	1,68%	291	1,65%	6,19%
21	Otros	855	666	633	28,38%	35,07%	6.279	34,16%	8.055	45,73%	-22,05%
Total		2.149	2.011	1.823			18.381	1	17.616		

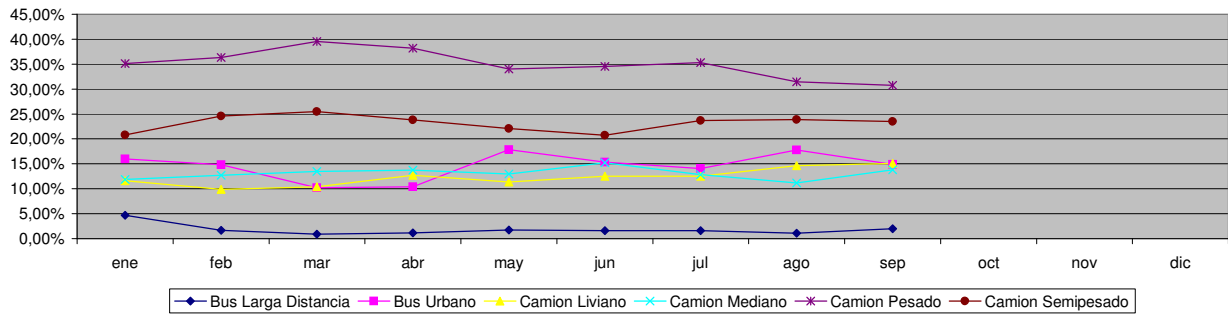


Patentamientos por Ranking de Livianos y Pesados - Mercado Total

Comercial Liviano



Comercial Pesado





Patentamientos por Provincias y Tipos -

Distrito	Automovil+Comercial Liviano							Comercial Pesado+Otros Pesados							Mercado Total					
	sep/08 (a)	sep/07 (b)	ago/08 (c)	Var a-b	Var a-c	Ac. 08	Ac. 07	Var 08-07	sep/08 (a)	sep/07 (b)	ago/08 (c)	Var a-b	Var a-c	Ac. 08	Ac. 07	Var 08-07	Ac. 08	Ac. 07	Var 08-07	Part %
CAPITAL FEDERAL	10.074	9.040	8.856	11,44%	13,75%	86.364	82.766	4,35%	730	861	688	-15,21%	6,10%	6.884	7.547	-8,78%	93.248	90.313	3,25%	18,50%
GRAN BUENOS AIRES	8.598	7.041	7.497	22,11%	14,69%	75.654	67.981	11,29%	343	312	272	9,94%	26,10%	2.778	2.948	-5,77%	78.432	70.929	10,58%	15,56%
BUENOS AIRES	8.156	6.987	7.544	16,73%	8,11%	73.273	66.131	10,80%	438	440	434	-0,45%	0,92%	4.041	3.742	7,99%	77.314	69.873	10,65%	15,34%
CORDOBA	5.398	4.733	4.931	14,05%	9,47%	50.311	42.402	18,65%	402	288	288	39,58%	39,58%	3.024	2.508	20,57%	53.335	44.910	18,76%	10,58%
SANTA FE	4.750	4.455	4.597	6,62%	3,33%	43.380	38.933	11,42%	372	389	301	-4,37%	23,59%	3.072	2.707	13,48%	46.452	41.640	11,56%	9,22%
MENDOZA	1.844	1.700	1.746	8,47%	5,61%	17.348	15.081	15,03%	151	145	141	4,14%	7,09%	1.286	1.324	-2,87%	18.634	16.405	13,59%	3,70%
ENTRE RIOS	1.198	1.014	1.215	18,15%	-1,40%	11.555	10.173	13,58%	108	110	98	-1,82%	10,20%	977	893	9,41%	12.532	11.066	13,25%	2,49%
CHUBUT	1.208	1.037	1.219	16,49%	-0,90%	11.367	9.995	13,73%	77	86	127	-10,47%	-39,37%	918	839	9,42%	12.285	10.834	13,39%	2,44%
NEUQUEN	1.243	1.025	1.086	21,27%	14,46%	11.295	9.305	21,39%	97	78	77	24,36%	25,97%	695	684	1,61%	11.990	9.989	20,03%	2,38%
TUCUMAN	1.083	783	931	38,31%	16,33%	9.460	8.256	14,58%	78	38	56	105,26%	39,29%	673	587	14,65%	10.133	8.843	14,59%	2,01%
SALTA	957	892	853	7,29%	12,19%	9.235	8.290	11,40%	85	94	89	-9,57%	-4,49%	861	823	4,62%	10.096	9.113	10,79%	2,00%
CHACO	972	602	965	61,46%	0,73%	8.757	6.320	38,56%	85	69	85	23,19%	0,00%	779	649	20,03%	9.536	6.969	36,83%	1,89%
CORRIENTES	746	619	823	20,52%	-9,36%	8.255	6.951	18,76%	104	89	121	16,85%	-14,05%	1.089	870	25,17%	9.344	7.821	19,47%	1,85%
SANTA CRUZ	903	649	850	39,14%	6,24%	7.720	6.236	23,80%	64	49	55	30,61%	16,36%	413	511	-19,18%	8.133	6.747	20,54%	1,61%
RIO NEGRO	765	776	752	-1,42%	1,73%	7.059	6.817	3,55%	19	22	23	-13,64%	-17,39%	214	236	-9,32%	7.273	7.053	3,12%	1,44%
MISIONES	578	629	509	-8,11%	13,56%	5.787	5.892	-1,78%	46	25	43	84,00%	6,98%	350	315	11,11%	6.137	6.207	-1,13%	1,22%
LA PAMPA	641	501	575	27,94%	11,48%	5.672	4.787	18,49%	43	30	35	43,33%	22,86%	270	248	8,87%	5.942	5.035	18,01%	1,18%
TIERRA DEL FUEGO	617	685	551	-9,93%	11,98%	5.251	5.120	2,56%	28	14	32	100,00%	-12,50%	291	294	-1,02%	5.542	5.414	2,36%	1,10%
JUJUY	513	425	426	20,71%	20,42%	4.798	4.161	15,31%	67	79	45	-15,19%	48,89%	681	752	-9,44%	5.479	4.913	11,52%	1,09%
SAN JUAN	475	440	471	7,95%	0,85%	4.623	3.864	19,64%	28	24	36	16,67%	-22,22%	348	301	15,61%	4.971	4.165	19,35%	0,99%
SANTIAGO DEL ESTERO	346	408	398	-15,20%	-13,07%	4.155	3.769	10,24%	29	28	33	3,57%	-12,12%	258	250	3,20%	4.413	4.019	9,80%	0,88%
SAN LUIS	331	297	345	11,45%	-4,06%	3.429	2.975	15,26%	10	15	9	-33,33%	11,11%	108	140	-22,86%	3.537	3.115	13,55%	0,70%
FORMOSA	331	265	318	24,91%	4,09%	3.340	2.673	24,95%	18	12	10	50,00%	80,00%	156	197	-20,81%	3.496	2.870	21,81%	0,69%
CATAMARCA	363	344	338	5,52%	7,40%	3.319	2.726	21,75%	9	6	10	50,00%	-10,00%	107	76	40,79%	3.426	2.802	22,27%	0,68%
LA RIOJA	257	201	202	27,86%	27,23%	2.146	1.995	7,57%	13	6	4	116,67%	225,00%	95	54	75,93%	2.241	2.049	9,37%	0,44%



Patentamientos por Provincias y Tipos -

