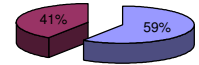




Patentamientos por Marcas - Mercado Total

	oct/08(a)	sep/08(b)	oct/07(c)	oct/06(d)	Var a-b	Var a-c	Var a-d	Ac. 08	Ac. 07	Var 08-07
Automovil	37.683	41.522	36.591	27.028	-9,25%	2,98%	39,42%	413.489	377.955	9,40%
Comercial Liviano	9.371	11.207	9.314	6.353	-16,38%	0,61%	47,51%	107.500	91.757	17,16%
Comercial Pesado	2.045	2.189	2.287	1.725	-6,58%	-10,58%	18,55%	20.729	20.276	2,23%
Otros Pesados	1.156	1.279	1.305	903	-9,62%	-11,42%	28,02%	12.864	12.596	2,13%
Total	50.255	56.197	49.497	36.009	-10,57%	1,53%	39,56%	554.582	502.584	10,35%
Prom. diario	2.284	2.554	2.250	1.715				2.654	2.416	
Dias habiles	22	22	22	21				209	208	

Patentamientos por origen		
	08-Oct	Ac. 08
Importados	0	298.080
Nacionales	0	206.176



■ Importados ■ Nacionales

Patentamientos Mensuales

	ene	feb	mar	abr	may	jun	jul	ago	sep	oct	nov	dic
2008	85.811	46.477	44.277	56.150	56.809	49.082	58.414	51.110	56.197	50.256		
2007	82.552	38.841	47.379	41.626	47.231	42.139	50.182	54.285	48.857	49.497	40.640	24.528
Var% 08-07	3,95%	19,66%	-6,55%	34,89%	20,28%	16,48%	16,40%	-5,85%	15,02%	1,53%	-100,00%	-100,00%
2006	65.984	32.425	40.400	34.249	38.284	36.568	36.949	39.123	39.644	36.009	33.252	17.725
2005	52.400	26.323	30.558	32.929	33.443	32.556	34.172	31.908	36.126	30.578	29.364	15.968

Patentamientos por Marcas - Totales

Marca	oct/08(a)		oct/07(c)		sep/08(e)		Var a-c		2008		2007		Var 2008-2007
	Part %	Part %	Part %	Part %	Part %	Part %	ene - oct	Part %	ene - oct	Part %	Part %		
Volkswagen	9.842	20,05%	8.831	18,34%	11.325	20,63%	11,45%	-13,09%	100.852	18,63%	94.856	19,34%	6,32%
Chevrolet	6.970	14,20%	7.431	15,43%	7.605	13,85%	-6,20%	-8,35%	76.796	14,18%	73.457	14,98%	4,55%
Ford	6.524	13,29%	7.221	15,00%	6.651	12,12%	-9,65%	-1,91%	67.610	12,49%	66.588	13,58%	1,53%
Fiat	5.275	10,75%	4.673	9,71%	5.616	10,23%	12,88%	-6,07%	57.678	10,65%	49.172	10,03%	17,30%
Renault	5.098	10,39%	5.178	10,75%	6.667	12,15%	-1,54%	-23,53%	63.013	11,64%	59.955	12,22%	5,10%
Peugeot	4.390	8,95%	4.724	9,81%	4.626	8,43%	-7,07%	-5,10%	53.855	9,95%	51.004	10,40%	5,59%
Toyota	2.585	5,27%	2.528	5,25%	2.855	5,20%	2,25%	-9,46%	27.865	5,15%	25.132	5,12%	10,87%
Citroen	1.628	3,32%	2.076	4,31%	1.592	2,90%	-21,58%	2,26%	20.136	3,72%	18.803	3,83%	7,09%
Honda	1.501	3,06%	1.251	2,60%	1.670	3,04%	19,98%	-10,12%	17.615	3,25%	9.600	1,96%	83,49%
Mercedes Benz	1.258	2,56%	1.213	2,52%	1.384	2,52%	3,71%	-9,10%	13.102	2,42%	11.848	2,42%	10,58%
Suzuki	813	1,66%	848	1,76%	905	1,65%	-4,13%	-10,17%	8.295	1,53%	8.743	1,78%	-5,12%
Kia	452	0,92%	180	0,37%	482	0,88%	151,11%	-6,22%	3.385	0,63%	1.626	0,33%	108,18%
Hyundai	421	0,86%	243	0,50%	570	1,04%	73,25%	-26,14%	4.509	0,83%	1.773	0,36%	154,31%
Iveco	390	0,79%	335	0,70%	414	0,75%	16,42%	-5,80%	4.108	0,76%	3.158	0,64%	30,08%
Nissan	375	0,76%	295	0,61%	676	1,23%	27,12%	-44,53%	5.856	1,08%	2.913	0,59%	101,03%
Audi	283	0,58%	238	0,49%	266	0,48%	18,91%	6,39%	3.073	0,57%	2.515	0,51%	22,19%
Chrysler	199	0,41%	98	0,20%	287	0,52%	103,06%	-30,66%	1.541	0,28%	915	0,19%	68,42%
BMW	185	0,38%	169	0,35%	251	0,46%	9,47%	-26,29%	2.616	0,48%	2.120	0,43%	23,40%
Scania	136	0,28%	167	0,35%	167	0,30%	-18,56%	-18,56%	1.491	0,28%	1.393	0,28%	7,04%
Mitsubishi	135	0,28%	72	0,15%	137	0,25%	87,50%	-1,46%	1.639	0,30%	1.004	0,20%	63,25%
Volvo	112	0,23%	95	0,20%	97	0,18%	17,89%	15,46%	1.095	0,20%	733	0,15%	49,39%
Jeep	104	0,21%	73	0,15%	142	0,26%	42,47%	-26,76%	1.477	0,27%	997	0,20%	48,14%
Chery	72	0,15%		0,00%	77	0,14%	N/D	-6,49%	255	0,05%		0,00%	N/D
Puma de Tat	69	0,14%	22	0,05%	22	0,04%	213,64%	213,64%	306	0,06%	171	0,03%	78,95%
Agrale	65	0,13%	42	0,09%	70	0,13%	54,76%	-7,14%	555	0,10%	400	0,08%	38,75%
Seat	51	0,10%	14	0,03%	73	0,13%	264,29%	-30,14%	425	0,08%	52	0,01%	717,31%
Subaru	50	0,10%	34	0,07%	66	0,12%	47,06%	-24,24%	505	0,09%	366	0,07%	37,98%
Dodge	36	0,07%	33	0,07%	135	0,25%	9,09%	-73,33%	942	0,17%	403	0,08%	133,75%
Mini	31	0,06%	34	0,07%	41	0,07%	-8,82%	-24,39%	409	0,08%	347	0,07%	17,87%
Porsche	13	0,03%	10	0,02%	13	0,02%	30,00%	0,00%	176	0,03%	102	0,02%	72,55%
Land Rover	11	0,02%	14	0,03%	12	0,02%	-21,43%	-8,33%	190	0,04%	188	0,04%	1,06%
Jaguar	2	0,00%		0,00%		0,00%	N/D	N/D	4	0,00%	12	0,00%	-66,67%
Ferrari	1	0,00%	1	0,00%		0,00%	0,00%	N/D	5	0,00%	5	0,00%	0,00%
Alfa Romeo		0,00%	4	0,01%		0,00%	-100,00%	N/D	27	0,00%	59	0,01%	-54,24%
Hummer		0,00%		0,00%		0,00%	N/D	N/D	2	0,00%	7	0,00%	-71,43%
Isuzu		0,00%		0,00%		0,00%	N/D	N/D		0,00%	9	0,00%	-100,00%
Lamborghini		0,00%		0,00%		0,00%	N/D	N/D	1	0,00%		0,00%	N/D
Lexus		0,00%		0,00%		0,00%	N/D	N/D		0,00%	1	0,00%	-100,00%
Maserati		0,00%		0,00%		0,00%	N/D	N/D		0,00%	3	0,00%	-100,00%
Total	49.077		48.147		54.894				541.409		490.430		

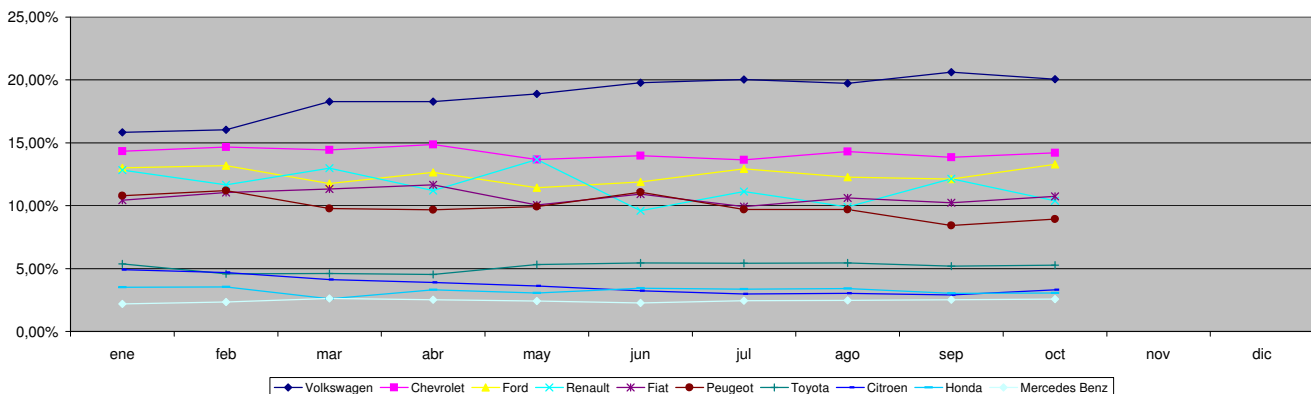


Patentamientos por Marcas - Mercado Total

Patentamientos por Marcas - Autos + Livianos								2008	2008	2007	2007	Var	
Marca	oct/08(a)	Part %	oct/07(c)	Part %	sep/08(e)	Part %	Var a-c	Var a-e	ene - oct	Part %	ene - oct	Part %	2008-2007
Volkswagen	9.628	20,46%	8.463	18,44%	11.073	21,00%	13,77%	-13,05%	98.325	18,87%	91.731	19,53%	7,19%
Chevrolet	6.970	14,81%	7.431	16,19%	7.605	14,42%	-6,20%	-8,35%	76.796	14,74%	73.457	15,64%	4,55%
Ford	6.146	13,06%	6.768	14,74%	6.198	11,75%	-9,19%	-0,84%	63.541	12,20%	62.306	13,26%	1,98%
Fiat	5.275	11,21%	4.673	10,18%	5.616	10,65%	12,88%	-6,07%	57.678	11,07%	49.172	10,47%	17,30%
Renault	5.031	10,69%	5.129	11,17%	6.625	12,56%	-1,91%	-24,06%	62.439	11,98%	58.567	12,47%	6,61%
Peugeot	4.390	9,33%	4.724	10,29%	4.626	8,77%	-7,07%	-5,10%	53.855	10,34%	51.004	10,86%	5,59%
Toyota	2.585	5,49%	2.528	5,51%	2.855	5,41%	2,25%	-9,46%	27.865	5,35%	25.132	5,35%	10,87%
Citroen	1.628	3,46%	2.076	4,52%	1.592	3,02%	-21,58%	2,26%	20.136	3,86%	18.803	4,00%	7,09%
Honda	1.501	3,19%	1.251	2,73%	1.670	3,17%	19,98%	-10,12%	17.615	3,38%	9.600	2,04%	83,49%
Suzuki	813	1,73%	848	1,85%	905	1,72%	-4,13%	-10,17%	8.295	1,59%	8.743	1,86%	-5,12%
Mercedes Benz	551	1,17%	390	0,85%	622	1,18%	41,28%	-11,41%	5.957	1,14%	4.263	0,91%	39,74%
Kia	452	0,96%	180	0,39%	482	0,91%	151,11%	-6,22%	3.385	0,65%	1.626	0,35%	108,18%
Hyundai	389	0,83%	242	0,53%	523	0,99%	60,74%	-25,62%	4.297	0,82%	1.736	0,37%	147,52%
Nissan	375	0,80%	295	0,64%	676	1,28%	27,12%	-44,53%	5.856	1,12%	2.913	0,62%	101,03%
Audi	283	0,60%	238	0,52%	266	0,50%	18,91%	6,39%	3.073	0,59%	2.515	0,54%	22,19%
Chrysler	199	0,42%	98	0,21%	287	0,54%	103,06%	-30,66%	1.541	0,30%	915	0,19%	68,42%
BMW	185	0,39%	169	0,37%	251	0,48%	9,47%	-26,29%	2.616	0,50%	2.120	0,45%	23,40%
Mitsubishi	135	0,29%	72	0,16%	137	0,26%	87,50%	-1,46%	1.639	0,31%	1.004	0,21%	63,25%
Iveco	112	0,24%	75	0,16%	119	0,23%	49,33%	-5,88%	1.236	0,24%	1.192	0,25%	3,69%
Jeep	104	0,22%	73	0,16%	142	0,27%	42,47%	-26,76%	1.477	0,28%	997	0,21%	48,14%
Chery	72	0,15%		0,00%	77	0,15%	N/D	-6,49%	255	0,05%		0,00%	N/D
Seat	51	0,11%	14	0,03%	73	0,14%	264,29%	-30,14%	425	0,08%	52	0,01%	717,31%
Subaru	50	0,11%	34	0,07%	66	0,13%	47,06%	-24,24%	505	0,10%	366	0,08%	37,98%
Dodge	36	0,08%	33	0,07%	135	0,26%	9,09%	-73,33%	942	0,18%	403	0,09%	133,75%
Volvo	35	0,07%	38	0,08%	39	0,07%	-7,89%	-10,26%	419	0,08%	360	0,08%	16,39%
Mini	31	0,07%	34	0,07%	41	0,08%	-8,82%	-24,39%	409	0,08%	347	0,07%	17,87%
Porsche	13	0,03%	10	0,02%	13	0,02%	30,00%	0,00%	176	0,03%	102	0,02%	72,55%
Land Rover	11	0,02%	14	0,03%	12	0,02%	-21,43%	-8,33%	190	0,04%	188	0,04%	1,06%
Jaguar	2	0,00%		0,00%		0,00%	N/D	N/D	4	0,00%	12	0,00%	-66,67%
Ferrari	1	0,00%	1	0,00%		0,00%	0,00%	N/D	5	0,00%	5	0,00%	0,00%
Agrale		0,00%		0,00%	1	0,00%	N/D	-100,00%	1	0,00%	2	0,00%	-50,00%
Alfa Romeo		0,00%	4	0,01%		0,00%	-100,00%	N/D	27	0,01%	59	0,01%	-54,24%
Hummer		0,00%		0,00%		0,00%	N/D	N/D	2	0,00%	7	0,00%	-71,43%
Isuzu		0,00%		0,00%		0,00%	N/D	N/D		0,00%	9	0,00%	-100,00%
Lamborghini		0,00%		0,00%		0,00%	N/D	N/D	1	0,00%		0,00%	N/D
Lexus		0,00%		0,00%		0,00%	N/D	N/D		0,00%	1	0,00%	-100,00%
Maserati		0,00%		0,00%		0,00%	N/D	N/D		0,00%	3	0,00%	-100,00%
Puma de Tat		0,00%		0,00%	2	0,00%	N/D	-100,00%	6	0,00%		0,00%	N/D
Total	47.054		45.905		52.729				520.989		469.712		

Patentamientos por Marcas - Camiones + Buses								2008	2008	2007	2007	Var	
Marca	oct/08(a)	Part %	oct/07(c)	Part %	sep/08(e)	Part %	Var a-c	Var a-e	ene - oct	Part %	ene - oct	Part %	2008-2007
Mercedes Benz	707	34,95%	823	36,71%	762	35,20%	-14,09%	-7,22%	7.145	34,99%	7.585	36,61%	-5,80%
Ford	378	18,69%	453	20,21%	453	20,92%	-16,56%	-16,56%	4.069	19,93%	4.282	20,67%	-4,97%
Iveco	278	13,74%	260	11,60%	295	13,63%	6,92%	-5,76%	2.872	14,06%	1.966	9,49%	46,08%
Volkswagen	214	10,58%	368	16,41%	252	11,64%	-41,85%	-15,08%	2.527	12,38%	3.125	15,08%	-19,14%
Scania	136	6,72%	167	7,45%	167	7,71%	-18,56%	-18,56%	1.491	7,30%	1.393	6,72%	7,04%
Volvo	77	3,81%	57	2,54%	58	2,68%	35,09%	32,76%	676	3,31%	373	1,80%	81,23%
Puma de Tat	69	3,41%	22	0,98%	20	0,92%	213,64%	245,00%	300	1,47%	171	0,83%	75,44%
Renault	67	3,31%	49	2,19%	42	1,94%	36,73%	59,52%	574	2,81%	1.388	6,70%	-58,65%
Agrale	65	3,21%	42	1,87%	69	3,19%	54,76%	-5,80%	554	2,71%	398	1,92%	39,20%
Hyundai	32	1,58%	1	0,04%	47	2,17%	3100,00%	-31,91%	212	1,04%	37	0,18%	472,97%
Total	2.023		2.242		2.165				20.420		20.718		

Participacion por Marcas - Evolucion Mensual

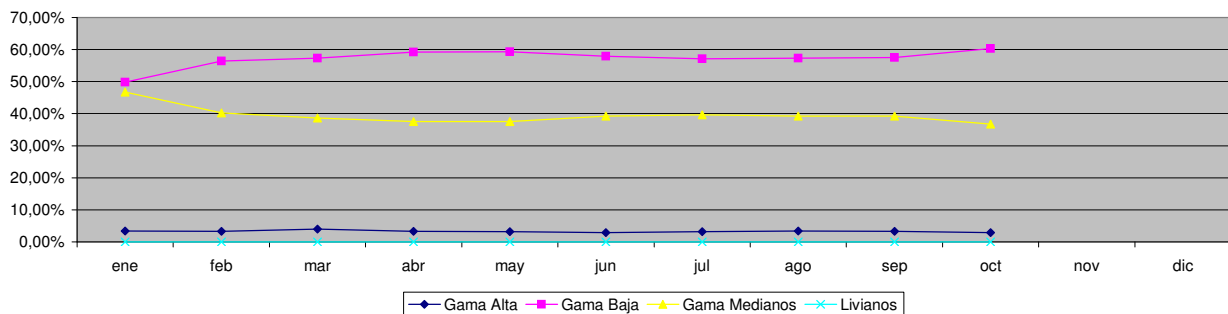




Patentamientos por Ranking de Automoviles - Mercado Total

Ranking Por Modelos - Automoviles												
Rank.	Modelo	oct/08 (a)	oct/07 (b)	sep/08 (c)	Var a-b	Var a-c	Ac. 08	Part %	Ac. 07	Part %	Var 08-07	
1	Volkswagen GOL	3.180	3.006	4.188	5,79%	-24,07%	38.313	9,27%	36.012	9,54%	6,39%	
2	Chevrolet CORSA	2.895	2.934	3.006	-1,33%	-3,69%	31.099	7,52%	30.222	8,00%	2,90%	
3	Ford ECOSPORT	1.718	1.579	1.519	8,80%	13,10%	16.057	3,88%	14.241	3,77%	12,75%	
4	Peugeot 207 COMPACT	1.688		165	N/D	923,03%	1.853	0,45%		0,00%	N/D	
5	Renault CLIO	1.671	1.424	1.917	17,35%	-12,83%	15.767	3,81%	18.999	5,03%	-17,01%	
6	Ford FIESTA	1.378	1.692	1.436	-18,56%	-4,04%	12.815	3,10%	14.910	3,95%	-14,05%	
7	Volkswagen GOL TREND	1.371		840	N/D	63,21%	2.212	0,54%		0,00%	N/D	
8	Fiat SIENA	1.362	685	1.312	98,83%	3,81%	12.662	3,06%	8.691	2,30%	45,69%	
9	Volkswagen SURAN	1.242	1.270	1.374	-2,20%	-9,61%	14.234	3,44%	13.466	3,57%	5,70%	
10	Volkswagen BORA	1.229	1.032	1.455	19,09%	-15,53%	11.599	2,81%	8.046	2,13%	44,16%	
11	Peugeot 307	1.017	1.391	1.338	-26,89%	-23,99%	14.885	3,60%	14.496	3,84%	2,68%	
12	Ford KA	955	992	835	-3,73%	14,37%	8.564	2,07%	8.593	2,28%	-0,34%	
13	Volkswagen FOX/CROSSFOX	925	1.100	1.121	-15,91%	-17,48%	11.977	2,90%	12.094	3,20%	-0,97%	
14	Fiat UNO	908	888	953	2,25%	-4,72%	10.645	2,58%	10.051	2,66%	5,91%	
15	Fiat PALIO	886	1.035	1.202	-14,40%	-26,29%	10.924	2,64%	12.512	3,31%	-12,69%	
16	Chevrolet ASTRA	886	818	1.046	8,31%	-15,30%	10.321	2,50%	8.556	2,27%	20,63%	
17	Chevrolet CORSA II	863	938	1.068	-8,00%	-19,19%	8.459	2,05%	8.316	2,20%	1,72%	
18	Ford FOCUS	699	910	717	-23,19%	-2,51%	8.713	2,11%	8.714	2,31%	-0,01%	
19	Renault MEGANE	679	531	1.137	27,87%	-40,28%	10.306	2,49%	11.578	3,07%	-10,99%	
20	Toyota COROLLA	635	590	799	7,63%	-20,53%	6.802	1,65%	6.200	1,64%	9,71%	
21	Suzuki FUN	599	711	689	-15,75%	-13,06%	6.300	1,52%	7.834	2,07%	-19,58%	
22	Peugeot 206	593	2.238	1.756	-73,50%	-66,23%	25.630	6,20%	24.268	6,43%	5,61%	
23	Honda FIT	590	578	592	2,08%	-0,34%	7.270	1,76%	4.246	1,12%	71,22%	
24	Renault KANGOO	557	607	707	-8,24%	-21,22%	7.179	1,74%	4.894	1,30%	46,69%	
25	Fiat PALIO WEEKEND	547	539	384	1,48%	42,45%	3.653	0,88%	5.285	1,40%	-30,88%	
26	Chevrolet MERIVA	534	790	532	-32,41%	0,38%	6.840	1,65%	8.189	2,17%	-16,47%	
27	Fiat PUNTO	513	372	542	37,90%	-5,35%	6.981	1,69%	447	0,12%	1461,74%	
28	Honda CIVIC	480	363	517	32,23%	-7,16%	5.327	1,29%	2.900	0,77%	83,69%	
29	Citroen C4	427	879	505	-51,42%	-15,45%	7.691	1,86%	2.734	0,72%	181,31%	
30	Renault MEGANE II	383	628	620	-39,01%	-38,23%	4.861	1,18%	6.062	1,61%	-19,81%	
31	Volkswagen VENTO	367	405	445	-9,38%	-17,53%	4.924	1,19%	4.417	1,17%	11,48%	
32	Chevrolet CORSA SW	357	512	387	-30,27%	-7,75%	4.537	1,10%	5.093	1,35%	-10,92%	
33	Citroen C3	343	435	197	-21,15%	74,11%	4.127	1,00%	7.048	1,87%	-41,44%	
34	Renault LOGAN	326	197	356	65,48%	-8,43%	4.411	1,07%	1.473	0,39%	199,46%	
35	Volkswagen GOL COUNTRY	316	397	432	-20,40%	-26,85%	3.605	0,87%	4.926	1,30%	-26,82%	
36	Volkswagen POLO	287	440	295	-34,77%	-2,71%	3.412	0,83%	4.594	1,22%	-25,73%	
37	Fiat IDEA	269	405	326	-33,58%	-17,48%	3.982	0,96%	4.558	1,21%	-12,64%	
38	Renault SANDERO	246		319	N/D	-22,88%	3.892	0,94%		0,00%	N/D	
39	Chevrolet VECTRA	242	309	311	-21,68%	-22,19%	3.173	0,77%	2.498	0,66%	27,02%	
40	Ford FOCUS II	241		114	N/D	111,40%	380	0,09%		0,00%	N/D	
41	Chevrolet SPARK	234		20	N/D	1070,00%	254	0,06%		0,00%	N/D	
42	Peugeot PARTNER	212	326	211	-34,97%	0,47%	2.569	0,62%	3.246	0,86%	-20,86%	
43	Nissan TIIDA	196		428	N/D	-54,21%	2.808	0,68%		0,00%	N/D	
44	Citroen BERLINGO	193	246	226	-21,54%	-14,60%	2.459	0,59%	2.799	0,74%	-12,15%	
45	Chrysler PT CRUISER	180	83	266	116,87%	-32,33%	1.352	0,33%	746	0,20%	81,23%	
46	Citroen PICASSO	170	201	162	-15,42%	4,94%	2.197	0,53%	2.433	0,64%	-9,70%	
47	Chevrolet ZAFIRA	159	172	169	-7,56%	-5,92%	1.851	0,45%	1.575	0,42%	17,52%	
48	Audi A4	132	85	126	55,29%	4,76%	948	0,23%	975	0,26%	-2,77%	
49	Volkswagen GOLF	126	143	170	-11,89%	-25,88%	1.747	0,42%	1.458	0,39%	19,82%	
50	Suzuki SWIFT	121	61	114	98,36%	6,14%	1.017	0,25%	344	0,09%	195,64%	
51	Otros	1.556	1.636	2.176	-4,89%	-28,49%	19.807	4,79%	16.895	4,47%	17,24%	
Total		37.683	36.573	41.522			413.391	1	377.634			

Autos - Participacion por Segmento





31/10/2008

Informe confidencial para uso exclusivo de los asociados

Patentamientos por Ranking de Livianos y Pesados - Mercado Total

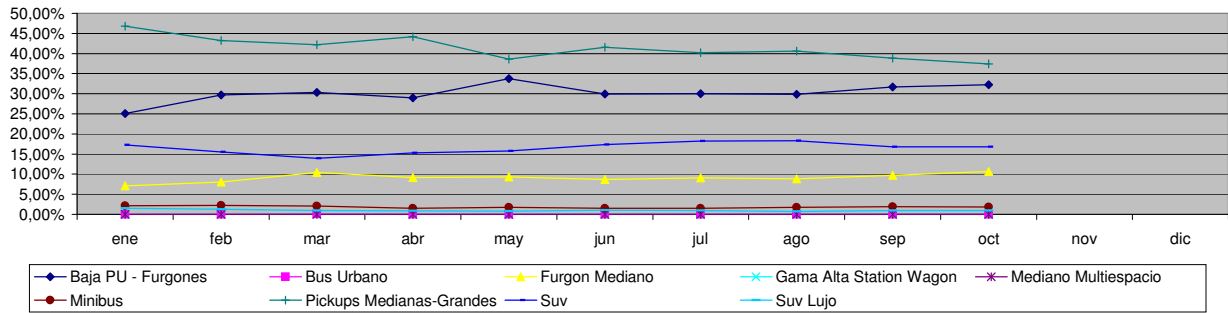
Comercial Liviano											
Rank.	Modelo	oct/08 (a)	oct/07 (b)	sep/08 (c)	Var a-b	Var a-c	Ac. 08	Part %	Ac. 07	Part %	Var 08-07
1	Toyota HILUX	1.630	1.556	1.684	4,76%	-3,21%	16.899	15,72%	15.145	16,51%	11,58%
2	Ford RANGER	944	1.201	1.281	-21,40%	-26,31%	13.653	12,70%	12.431	13,55%	9,83%
3	Renault KANGOO FURGON	767	1.091	1.045	-29,70%	-26,60%	10.391	9,67%	9.625	10,50%	7,96%
4	Chevrolet S-10	644	906	859	-28,92%	-25,03%	8.273	7,70%	8.521	9,29%	-9,91%
5	Peugeot PARTNER FURGON	638	534	737	19,48%	-13,43%	6.402	5,96%	6.201	6,76%	3,24%
6	Fiat FIORINO	544	430	576	26,51%	-5,56%	5.677	5,28%	4.146	4,52%	36,93%
7	Citroen BERLINGO FURGON	442	297	439	48,82%	0,68%	3.217	2,99%	3.429	3,74%	-6,18%
8	Honda CRV	370	266	499	39,10%	-25,85%	4.512	4,20%	1.872	2,04%	141,03%
9	Volkswagen SAVEIRO	366	375	469	-2,40%	-21,96%	3.542	3,30%	3.905	4,26%	-9,30%
10	Mercedes Benz SPRINTER	359	239	328	50,21%	9,45%	3.425	3,19%	2.600	2,84%	31,73%
11	Renault MASTER	213	314	249	-32,17%	-14,46%	2.581	2,40%	2.185	2,38%	18,12%
12	Toyota HILUX SW4	167	182	195	-8,24%	-14,36%	2.173	2,02%	2.004	2,19%	8,43%
13	Kia K2700	164	89	206	84,27%	-20,39%	949	0,88%	673	0,73%	41,01%
14	Hyundai SANTA FE	116	52	115	123,08%	0,87%	1.150	1,07%	332	0,36%	246,39%
15	Ford F 100	112	238	172	-52,94%	-34,88%	2.032	1,89%	2.521	2,75%	-19,40%
16	Iveco DAILY	112	75	119	49,33%	-5,88%	1.222	1,14%	1.192	1,30%	2,52%
17	Fiat UNO	109	96	105	13,54%	3,81%	992	0,92%	950	1,04%	4,42%
18	Chevrolet CAPTIVA	95		114	N/D	-16,67%	1.255	1,17%		0,00%	N/D
19	Hyundai TUCSON	94	60	164	56,67%	-42,68%	1.450	1,35%	428	0,47%	238,79%
20	Nissan X-TRAIL	89	44	80	102,27%	11,25%	755	0,70%	523	0,57%	44,36%
21	Otros	1.396	1.267	1.771	10,18%	-21,17%	16.932	15,75%	13.025	14,20%	30,00%
Total		9.371	9.312	11.207			107.482	1	91.708		

Comercial Pesado											
Rank.	Modelo	oct/08 (a)	oct/07 (b)	sep/08 (c)	Var a-b	Var a-c	Ac. 08	Part %	Ac. 07	Part %	Var 08-07
1	Iveco 170 E	119	121	117	-1,65%	1,71%	1.132	5,58%	693	3,93%	63,35%
2	Mercedes Benz L-1624	114	153	111	-25,49%	2,70%	877	4,32%	1.008	5,72%	-13,00%
3	Ford CARGO 1722 E	112	125	121	-10,40%	-7,44%	1.425	7,02%	560	3,18%	154,46%
4	Mercedes Benz OF 1722	98	32	29	206,25%	237,93%	383	1,89%	243	1,38%	57,61%
5	Mercedes Benz LS 1634	79	123	88	-35,77%	-10,23%	1.002	4,94%	1.456	8,26%	-31,18%
6	Ford F-4000	67	72	128	-6,94%	-47,66%	915	4,51%	688	3,90%	32,99%
7	Volkswagen 17220	66	104	99	-36,54%	-33,33%	839	4,13%	957	5,43%	-12,33%
8	Mercedes Benz 1315	65	52	49	25,00%	32,65%	640	3,15%	508	2,88%	25,98%
9	Puma de Tat D12	64	22	18	190,91%	255,56%	254	1,25%	128	0,73%	98,44%
10	Ford CARGO 1517 E	62	34	57	82,35%	8,77%	277	1,36%	195	1,11%	42,05%
11	Mercedes Benz ATEGO 1725	61	46	64	32,61%	-4,69%	626	3,08%	109	0,62%	474,31%
12	Iveco 450 E	60	87	66	-31,03%	-9,09%	684	3,37%	792	4,49%	-13,64%
13	Scania G340	56		45	N/D	24,44%	344	1,69%		0,00%	N/D
14	Mercedes Benz BMO 384	52		63	N/D	-17,46%	131	0,65%		0,00%	N/D
15	Volkswagen 17250 E	48	43	47	11,63%	2,13%	409	2,01%	170	0,96%	140,59%
16	Renault PREMIUM	45	31	21	45,16%	114,29%	354	1,74%	322	1,83%	9,94%
17	Ford CARGO 1832 E	43	77	53	-44,16%	-18,87%	584	2,88%	330	1,87%	76,97%
18	Volvo B12R	43	21	3	104,76%	1333,33%	86	0,42%	62	0,35%	38,71%
19	Agrale MT12	42	29	40	44,83%	5,00%	271	1,33%	239	1,36%	13,39%
20	Ford CARGO 915 E	42	33	31	27,27%	35,48%	238	1,17%	143	0,81%	66,43%
21	Otros	685	930	915	-26,34%	-25,14%	8.830	43,50%	9.023	51,19%	-2,14%
Total		2.023	2.135	2.165			20.301	1	17.626		

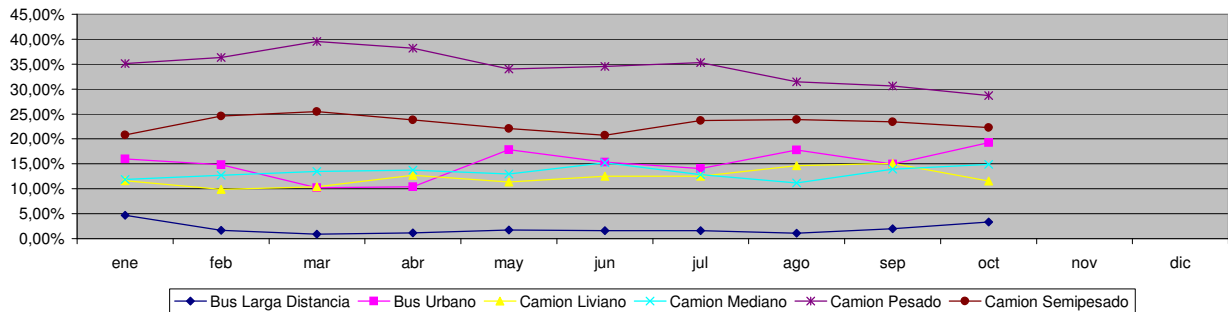


Patentamientos por Ranking de Livianos y Pesados - Mercado Total

Comercial Liviano



Comercial Pesado





Patentamientos por Provincias y Tipos -

Distrito	Automovil+Comercial Liviano							Comercial Pesado+Otros Pesados							Mercado Total					
	oct/08 (a)	oct/07 (b)	sep/08 (c)	Var a-b	Var a-c	Ac. 08	Ac. 07	Var 08-07	oct/08 (a)	oct/07 (b)	sep/08 (c)	Var a-b	Var a-c	Ac. 08	Ac. 07	Var 08-07	Ac. 08	Ac. 07	Var 08-07	Part %
CAPITAL FEDERAL	8.881	9.506	10.139	-6,57%	-12,41%	95.310	92.304	3,26%	832	917	737	-9,27%	12,89%	7.723	8.432	-8,41%	103.033	100.736	2,28%	18,58%
GRAN BUENOS AIRES	7.913	7.284	8.630	8,64%	-8,31%	83.599	75.314	11,00%	297	325	344	-8,62%	-13,66%	3.076	3.223	-4,56%	86.675	78.537	10,36%	15,63%
BUENOS AIRES	7.218	7.079	8.188	1,96%	-11,85%	80.523	73.242	9,94%	434	442	439	-1,81%	-1,14%	4.476	4.149	7,88%	85.000	77.394	9,83%	15,33%
CORDOBA	4.956	4.644	5.477	6,72%	-9,51%	55.346	47.074	17,57%	300	349	405	-14,04%	-25,93%	3.327	2.829	17,60%	58.673	49.903	17,57%	10,58%
SANTA FE	4.188	4.404	4.791	-4,90%	-12,59%	47.609	43.361	9,80%	342	384	376	-10,94%	-9,04%	3.418	3.065	11,52%	51.027	46.428	9,91%	9,20%
MENDOZA	1.678	1.582	1.861	6,07%	-9,83%	19.043	16.666	14,26%	121	183	153	-33,88%	-20,92%	1.409	1.504	-6,32%	20.452	18.170	12,56%	3,69%
ENTRE RIOS	1.114	979	1.222	13,79%	-8,84%	12.693	11.159	13,75%	103	90	112	14,44%	-8,04%	1.084	976	11,07%	13.777	12.135	13,53%	2,48%
CHUBUT	1.164	1.006	1.220	15,71%	-4,59%	12.543	11.003	14,00%	70	95	77	-26,32%	-9,09%	988	932	6,01%	13.531	11.935	13,37%	2,44%
NEUQUEN	1.111	943	1.247	17,82%	-10,91%	12.410	10.250	21,07%	76	82	97	-7,32%	-21,65%	771	764	0,92%	13.181	11.014	19,67%	2,38%
TUCUMAN	893	837	1.104	6,69%	-19,11%	10.374	9.094	14,08%	73	71	78	2,82%	-6,41%	746	657	13,55%	11.120	9.751	14,04%	2,01%
SALTA	909	823	957	10,45%	-5,02%	10.144	9.117	11,26%	80	94	85	-14,89%	-5,88%	941	913	3,07%	11.085	10.030	10,52%	2,00%
CHACO	943	585	972	61,20%	-2,98%	9.700	6.907	40,44%	83	82	85	1,22%	-2,35%	862	729	18,24%	10.562	7.636	38,32%	1,90%
CORRIENTES	678	682	756	-0,59%	-10,32%	8.943	7.635	17,13%	95	87	105	9,20%	-9,52%	1.185	955	24,08%	10.128	8.590	17,90%	1,83%
SANTA CRUZ	780	717	909	8,79%	-14,19%	8.506	6.954	22,32%	29	57	64	-49,12%	-54,69%	442	567	-22,05%	8.948	7.521	18,97%	1,61%
RIO NEGRO	745	777	772	-4,12%	-3,50%	7.811	7.597	2,82%	12	24	19	-50,00%	-36,84%	226	257	-12,06%	8.037	7.854	2,33%	1,45%
MISIONES	437	640	583	-31,72%	-25,04%	6.229	6.536	-4,70%	27	48	46	-43,75%	-41,30%	377	359	5,01%	6.606	6.895	-4,19%	1,19%
LA PAMPA	563	495	641	13,74%	-12,17%	6.235	5.284	18,00%	39	33	43	18,18%	-9,30%	309	279	10,75%	6.544	5.563	17,63%	1,18%
TIERRA DEL FUEGO	675	716	617	-5,73%	9,40%	5.926	5.837	1,52%	27	33	29	-18,18%	-6,90%	319	326	-2,15%	6.245	6.163	1,33%	1,13%
JUJUY	352	391	517	-9,97%	-31,91%	5.154	4.555	13,15%	48	87	67	-44,83%	-28,36%	729	836	-12,80%	5.883	5.391	9,13%	1,06%
SAN JUAN	430	429	485	0,23%	-11,34%	5.063	4.294	17,91%	35	30	28	16,67%	25,00%	383	330	16,06%	5.446	4.624	17,78%	0,98%
SANTIAGO DEL ESTERO	336	282	346	19,15%	-2,89%	4.491	4.055	10,75%	37	19	29	94,74%	27,59%	295	265	11,32%	4.786	4.320	10,79%	0,86%
SAN LUIS	357	308	342	15,91%	4,39%	3.797	3.283	15,66%	17	16	10	6,25%	70,00%	125	156	-19,87%	3.922	3.439	14,04%	0,71%
FORMOSA	257	296	331	-13,18%	-22,36%	3.597	2.969	21,15%	12	25	18	-52,00%	-33,33%	168	222	-24,32%	3.765	3.191	17,99%	0,68%
CATAMARCA	284	293	365	-3,07%	-22,19%	3.605	3.020	19,37%	11	12	9	-8,33%	22,22%	118	87	35,63%	3.723	3.107	19,83%	0,67%
LA RIOJA	192	207	257	-7,25%	-25,29%	2.338	2.202	6,18%	1	7	13	-85,71%	-92,31%	96	60	60,00%	2.434	2.262	7,60%	0,44%



Patentamientos por Provincias y Tipos -

