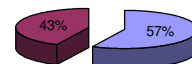




Patentamientos por Marcas - Mercado Total

	dic/07(a)	nov/07(b)	dic/06(c)	dic/05(d)	Var a-b	Var a-c	Var a-d	Ac. 07	Ac. 06	Var 07-06
Automovil	19.154	29.718	12.461	11.459	-35,55%	53,71%	67,15%	427.538	335.771	27,33%
Comercial Liviano	3.866	7.989	3.730	3.107	-51,61%	3,65%	24,43%	103.346	83.409	23,90%
Comercial Pesado	912	1.787	1.007	928	-48,96%	-9,43%	-1,72%	23.167	20.230	14,52%
Otros Pesados	610	1.148	557	488	-46,86%	9,52%	25,00%	13.799	11.427	20,76%
Total	24.542	40.642	17.755	15.982	-39,61%	38,23%	53,56%	567.850	450.837	25,95%
Prom. diario	1.363	1.847	934	761				2.281	1.789	
Dias habiles	18	22	19	21				249	252	

Patentamientos por origen		
	Dic-07	Ac. 07
Importados	15.234	324.401
Nacionales	9.308	243.446



■ Importados ■ Nacionales

Patentamientos Mensuales

	ene	feb	mar	abr	may	jun	jul	ago	sep	oct	nov	dic
2007	82.563	38.847	47.386	41.637	47.236	42.145	50.197	54.288	48.860	49.507	40.642	24.542
2006	65.995	32.439	40.420	34.273	38.305	36.582	36.968	39.132	39.656	36.027	33.285	17.755
Var% 07-06	25,10%	19,75%	17,23%	21,49%	23,32%	15,21%	35,79%	38,73%	23,21%	37,42%	22,10%	38,23%
2005	52.466	26.364	30.599	32.960	33.469	32.593	34.184	31.927	36.152	30.593	29.395	15.982
2004												

Patentamientos por Marcas - Totales

Marca	2007		2006		2006		2006		2006		Var		
	dic/07(a)	Part %	dic/06(c)	Part %	ene - dic	Part %	ene - dic	Part %	2007-2006				
Volkswagen	7.589	31,79%	3.678	21,42%	6.735	17,09%	106,33%	12,68%	109.180	19,72%	88.200	20,10%	23,79%
Chevrolet	2.929	12,27%	2.493	14,52%	5.577	14,15%	17,49%	-47,48%	81.964	14,80%	64.380	14,67%	27,31%
Ford	2.898	12,14%	2.446	14,24%	6.244	15,84%	18,48%	-53,59%	75.730	13,68%	64.067	14,60%	18,20%
Renault	2.184	9,15%	1.428	8,32%	4.828	12,25%	52,94%	-54,76%	66.976	12,10%	48.572	11,07%	37,89%
Peugeot	2.700	11,31%	2.358	13,73%	4.219	10,70%	14,50%	-36,00%	57.924	10,46%	45.978	10,48%	25,98%
Fiat	1.933	8,10%	1.825	10,63%	4.026	10,21%	5,92%	-51,99%	55.136	9,96%	43.573	9,93%	26,54%
Toyota	877	3,67%	696	4,05%	1.926	4,89%	26,01%	-54,47%	27.935	5,05%	22.067	5,03%	26,59%
Citroen	742	3,11%	562	3,27%	1.725	4,38%	32,03%	-56,99%	21.270	3,84%	14.568	3,32%	46,00%
Mercedes Benz	434	1,82%	381	2,22%	835	2,12%	13,91%	-48,02%	13.117	2,37%	11.143	2,54%	17,72%
Honda	443	1,86%	152	0,89%	1.033	2,62%	191,45%	-57,12%	11.076	2,00%	7.323	1,67%	51,25%
Suzuki	259	1,08%	273	1,59%	572	1,45%	-5,13%	-54,72%	9.574	1,73%	10.068	2,29%	-4,91%
Iveco	144	0,60%	161	0,94%	257	0,65%	-10,56%	-43,97%	3.559	0,64%	3.035	0,69%	17,27%
Nissan	117	0,49%	243	1,42%	206	0,52%	-51,85%	-43,20%	3.236	0,58%	3.304	0,75%	-2,06%
Audi	75	0,31%	47	0,27%	152	0,39%	59,57%	-50,66%	2.742	0,50%	2.101	0,48%	30,51%
BMW	37	0,15%	27	0,16%	107	0,27%	37,04%	-65,42%	2.264	0,41%	1.684	0,38%	34,44%
Hyundai	96	0,40%	41	0,24%	214	0,54%	134,15%	-55,14%	2.083	0,38%	885	0,20%	135,37%
Kia	94	0,39%	45	0,26%	127	0,32%	108,89%	-25,98%	1.847	0,33%	1.163	0,27%	58,81%
Scania	49	0,21%	77	0,45%	158	0,40%	-36,36%	-68,99%	1.600	0,29%	1.865	0,43%	-14,21%
Mitsubishi	44	0,18%	36	0,21%	97	0,25%	22,22%	-54,64%	1.145	0,21%	883	0,20%	29,67%
Jeep	50	0,21%	21	0,12%	71	0,18%	138,10%	-29,58%	1.118	0,20%	661	0,15%	69,14%
Chrysler	38	0,16%	18	0,10%	77	0,20%	111,11%	-50,65%	1.030	0,19%	688	0,16%	49,71%
Volvo	46	0,19%	37	0,22%	81	0,21%	24,32%	-43,21%	787	0,14%	485	0,11%	62,27%
Agrale	23	0,10%	45	0,26%	49	0,12%	-48,89%	-53,06%	472	0,09%	391	0,09%	20,72%
Dodge	9	0,04%	14	0,08%	8	0,02%	-35,71%	12,50%	420	0,08%	372	0,08%	12,90%
Subaru	22	0,09%	13	0,08%	23	0,06%	69,23%	-4,35%	411	0,07%	245	0,06%	67,76%
Mini	15	0,06%	6	0,03%	17	0,04%	150,00%	-11,76%	379	0,07%	287	0,07%	32,06%
Land Rover	9	0,04%	16	0,09%	10	0,03%	-43,75%	-10,00%	207	0,04%	266	0,06%	-22,18%
Puma de Tat		0,00%	15	0,09%	11	0,03%	-100,00%	-100,00%	182	0,03%	71	0,02%	156,34%
Porsche	5	0,02%	3	0,02%	8	0,02%	66,67%	-37,50%	115	0,02%	104	0,02%	10,58%
Seat	6	0,03%		0,00%	17	0,04%	N/D	-64,71%	75	0,01%	11	0,00%	581,82%
Alfa Romeo	3	0,01%	3	0,02%	5	0,01%	0,00%	-40,00%	67	0,01%	46	0,01%	45,65%
Jaguar	1	0,00%	5	0,03%	1	0,00%	-80,00%	0,00%	14	0,00%	20	0,00%	-30,00%
Isuzu		0,00%	7	0,04%		0,00%	-100,00%	N/D	9	0,00%	285	0,06%	-96,84%
Hummer		0,00%		0,00%		0,00%	N/D	N/D	7	0,00%	16	0,00%	-56,25%
Ferrari	1	0,00%		0,00%		0,00%	N/D	N/D	6	0,00%	2	0,00%	200,00%
Maserati		0,00%		0,00%		0,00%	N/D	N/D	3	0,00%		0,00%	N/D
Aston Martin	1	0,00%		0,00%		0,00%	N/D	N/D	1	0,00%		0,00%	N/D
Lexus		0,00%		0,00%		0,00%	N/D	N/D	1	0,00%	2	0,00%	-50,00%
Total	23.873		17.172		39.416				553.662		438.811		

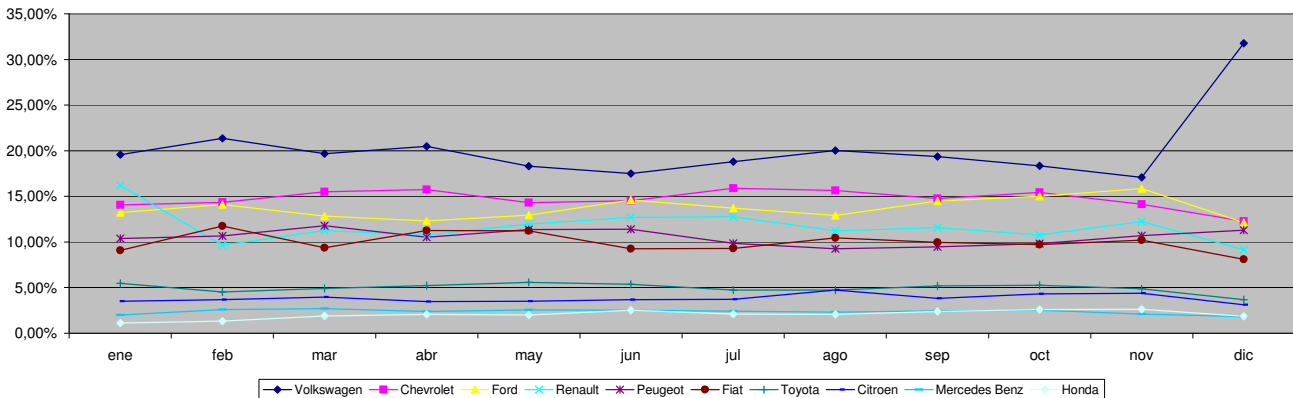


Patentamientos por Marcas - Mercado Total

Patentamientos por Marcas - Autos + Livianos										2007	2007	2006	2006	Var
Marca	dic/07(a)	Part %	dic/06(c)	Part %	nov/07(e)	Part %	Var a-c	Var a-e	ene - dic	Part %	ene - dic	Part %	2007-2006	
Volkswagen	7.449	32,36%	3.461	21,38%	6.512	17,27%	115,23%	-14,39%	105.692	19,91%	85.283	20,35%	23,93%	
Chevrolet	2.929	12,72%	2.493	15,40%	5.577	14,79%	17,49%	-47,48%	81.964	15,44%	64.380	15,36%	27,31%	
Ford	2.691	11,69%	2.228	13,76%	5.812	15,41%	20,78%	-53,70%	70.809	13,34%	59.678	14,24%	18,65%	
Renault	2.149	9,34%	1.353	8,36%	4.761	12,63%	58,83%	-54,86%	66.048	12,44%	47.932	11,44%	37,80%	
Peugeot	2.700	11,73%	2.358	14,57%	4.219	11,19%	14,50%	-36,00%	57.924	10,91%	45.978	10,97%	25,98%	
Fiat	1.933	8,40%	1.825	11,27%	4.026	10,68%	5,92%	-51,99%	55.136	10,39%	43.573	10,40%	26,54%	
Toyota	877	3,81%	696	4,30%	1.926	5,11%	26,01%	-54,47%	27.935	5,26%	22.067	5,26%	26,59%	
Citroen	742	3,22%	562	3,47%	1.725	4,57%	32,03%	-56,99%	21.270	4,01%	14.568	3,48%	46,00%	
Honda	443	1,92%	152	0,94%	1.033	2,74%	191,45%	-57,12%	11.076	2,09%	7.323	1,75%	51,25%	
Suzuki	259	1,13%	273	1,69%	572	1,52%	-5,13%	-54,72%	9.574	1,80%	10.068	2,40%	-4,91%	
Mercedes Benz	161	0,70%	183	1,13%	294	0,78%	-12,02%	-45,24%	4.718	0,89%	3.929	0,94%	20,08%	
Nissan	117	0,51%	243	1,50%	206	0,55%	-51,85%	-43,20%	3.236	0,61%	3.304	0,79%	-2,06%	
Audi	75	0,33%	47	0,29%	152	0,40%	59,57%	-50,66%	2.742	0,52%	2.101	0,50%	30,51%	
BMW	37	0,16%	27	0,17%	107	0,28%	37,04%	-65,42%	2.264	0,43%	1.684	0,40%	34,44%	
Hyundai	96	0,42%	27	0,17%	214	0,57%	255,56%	-55,14%	1.911	0,36%	575	0,14%	232,35%	
Kia	94	0,41%	45	0,28%	127	0,34%	108,89%	-25,98%	1.847	0,35%	1.163	0,28%	58,81%	
Iveco	41	0,18%	55	0,34%	73	0,19%	-25,45%	-43,84%	1.306	0,25%	1.469	0,35%	-11,10%	
Mitsubishi	44	0,19%	36	0,22%	97	0,26%	22,22%	-54,64%	1.145	0,22%	883	0,21%	29,67%	
Jeep	50	0,22%	21	0,13%	71	0,19%	138,10%	-29,58%	1.118	0,21%	661	0,16%	69,14%	
Chrysler	38	0,17%	18	0,11%	77	0,20%	111,11%	-50,65%	1.030	0,19%	688	0,16%	49,71%	
Dodge	9	0,04%	14	0,09%	8	0,02%	-35,71%	12,50%	420	0,08%	372	0,09%	12,90%	
Volvo	23	0,10%	19	0,12%	37	0,10%	21,05%	-37,84%	420	0,08%	194	0,05%	116,49%	
Subaru	22	0,10%	13	0,08%	23	0,06%	69,23%	-4,35%	411	0,08%	245	0,06%	67,76%	
Mini	15	0,07%	6	0,04%	17	0,05%	150,00%	-11,76%	379	0,07%	287	0,07%	32,06%	
Land Rover	9	0,04%	16	0,10%	10	0,03%	-43,75%	-10,00%	207	0,04%	266	0,06%	-22,18%	
Porsche	5	0,02%	3	0,02%	8	0,02%	66,67%	-37,50%	115	0,02%	104	0,02%	10,58%	
Seat	6	0,03%		0,00%	17	0,05%	N/D	-64,71%	75	0,01%	11	0,00%	581,82%	
Alfa Romeo	3	0,01%	3	0,02%	5	0,01%	0,00%	-40,00%	67	0,01%	46	0,01%	45,65%	
Jaguar	1	0,00%	5	0,03%	1	0,00%	-80,00%	0,00%	14	0,00%	20	0,00%	-30,00%	
Isuzu		0,00%	7	0,04%		0,00%	-100,00%	N/D	9	0,00%	285	0,07%	-96,84%	
Hummer		0,00%		0,00%		0,00%	N/D	N/D	7	0,00%	16	0,00%	-56,25%	
Ferrari	1	0,00%		0,00%		0,00%	N/D	N/D	6	0,00%	2	0,00%	200,00%	
Maserati		0,00%		0,00%		0,00%	N/D	N/D	3	0,00%		0,00%	N/D	
Agrale		0,00%		0,00%		0,00%	N/D	N/D	2	0,00%	4	0,00%	-50,00%	
Aston Martin	1	0,00%		0,00%		0,00%	N/D	N/D	1	0,00%		0,00%	N/D	
Lexus		0,00%		0,00%		0,00%	N/D	N/D	1	0,00%	2	0,00%	-50,00%	
Total	23.020		16.189		37.707				530.882		419.161			

Patentamientos por Marcas - Camiones + Buses										2007	2007	2006	2006	Var
Marca	dic/07(a)	Part %	dic/06(c)	Part %	nov/07(e)	Part %	Var a-c	Var a-e	ene - dic	Part %	ene - dic	Part %	2007-2006	
Mercedes Benz	273	32,00%	198	20,14%	541	31,66%	37,88%	-49,54%	8.399	36,87%	7.214	36,71%	16,43%	
Ford	207	24,27%	218	22,18%	432	25,28%	-5,05%	-52,08%	4.921	21,60%	4.389	22,34%	12,12%	
Volkswagen	140	16,41%	217	22,08%	223	13,05%	-35,48%	-37,22%	3.488	15,31%	2.917	14,84%	19,57%	
Iveco	103	12,08%	106	10,78%	184	10,77%	-2,83%	-44,02%	2.253	9,89%	1.566	7,97%	43,87%	
Scania	49	5,74%	77	7,83%	158	9,25%	-36,36%	-68,99%	1.600	7,02%	1.865	9,49%	-14,21%	
Renault	35	4,10%	75	7,63%	67	3,92%	-53,33%	-47,76%	928	4,07%	640	3,26%	45,00%	
Agrale	23	2,70%	45	4,58%	49	2,87%	-48,89%	-53,06%	470	2,06%	387	1,97%	21,45%	
Volvo	23	2,70%	18	1,83%	44	2,57%	27,78%	-47,73%	367	1,61%	291	1,48%	26,12%	
Puma de Tat		0,00%	15	1,53%	11	0,64%	-100,00%	-100,00%	182	0,80%	71	0,36%	156,34%	
Hyundai		0,00%	14	1,42%		0,00%	-100,00%	N/D	172	0,76%	310	1,58%	-44,52%	
Total	853		983		1.709				22.780		19.650			

Participacion por Marcas - Evolucion Mensual

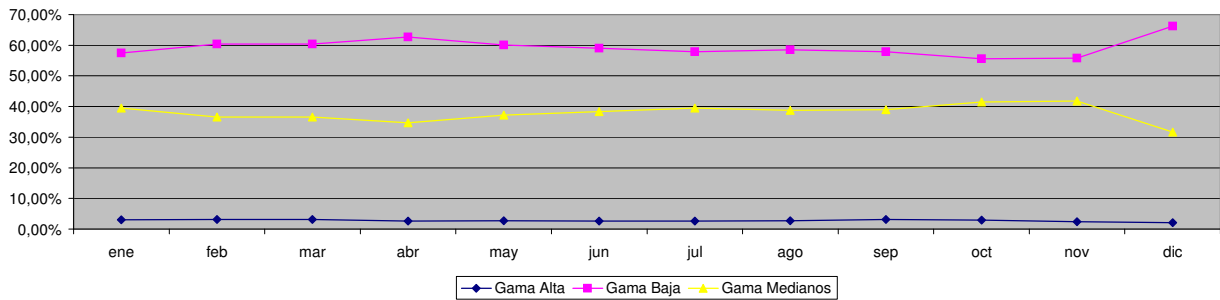




Patentamientos por Ranking de Automoviles - Mercado Total

Ranking Por Modelos - Automoviles											
Rank	Modelo	dic/07 (a)	dic/06 (b)	nov/07 (c)	Var a-b	Var a-c	Ac. 07	Part %	Ac. 06	Part %	Var 07-06
1	Volkswagen GOL	5.506	1.564	2.589	252,05%	112,67%	44.107	10,56%	36.268	11,04%	21,61%
2	Chevrolet CORSA	1.217	936	2.172	30,02%	-43,97%	33.610	8,05%	23.999	7,31%	40,05%
3	Peugeot 206	1.338	1.331	2.069	0,53%	-35,33%	27.675	6,63%	22.572	6,87%	22,61%
4	Renault CLIO	530	494	1.212	7,29%	-56,27%	20.745	4,97%	19.983	6,08%	3,81%
5	Ford FIESTA	364	451	1.237	-19,29%	-70,57%	16.511	3,95%	15.342	4,67%	7,62%
6	Peugeot 307	707	381	1.157	85,56%	-38,89%	16.477	3,95%	11.165	3,40%	47,58%
7	Ford ECOSPORT	776	442	1.186	75,57%	-34,57%	16.203	3,88%	15.999	4,87%	1,28%
8	Volkswagen SURAN	606	396	1.027	53,03%	-40,99%	15.099	3,62%	4.952	1,51%	204,91%
9	Fiat PALIO	466	387	831	20,41%	-43,92%	13.809	3,31%	11.425	3,48%	20,87%
10	Volkswagen FOX/CROSSFOX	367	329	685	11,55%	-46,42%	13.146	3,15%	10.530	3,21%	24,84%
11	Renault MEGANE	328	198	674	65,66%	-51,34%	12.581	3,01%	9.562	2,91%	31,57%
12	Fiat UNO	445	382	755	16,49%	-41,06%	11.251	2,69%	9.097	2,77%	23,68%
13	Ford KA	444	335	990	32,54%	-55,15%	10.027	2,40%	6.325	1,93%	58,53%
14	Ford FOCUS	270	228	726	18,42%	-62,81%	9.710	2,33%	6.693	2,04%	45,08%
15	Fiat SIENA	279	269	701	3,72%	-60,20%	9.671	2,32%	7.672	2,34%	26,06%
16	Chevrolet CORSA II	470	326	736	44,17%	-36,14%	9.523	2,28%	7.540	2,30%	26,30%
17	Chevrolet ASTRA	285	251	641	13,55%	-55,54%	9.482	2,27%	6.807	2,07%	39,30%
18	Chevrolet MERIVA	303	379	563	-20,05%	-46,18%	9.055	2,17%	8.302	2,53%	9,07%
19	Volkswagen BORA	222	227	587	-2,20%	-62,18%	8.855	2,12%	8.090	2,46%	9,46%
20	Suzuki FUN	213	249	478	-14,46%	-55,44%	8.525	2,04%	9.305	2,83%	-8,38%
21	Citroen C3	157	174	328	-9,77%	-52,13%	7.533	1,80%	6.754	2,06%	11,53%
22	Renault MEGANE II	212	53	552	300,00%	-61,59%	6.826	1,63%	2.205	0,67%	209,57%
23	Toyota COROLLA	131	132	442	-0,76%	-70,36%	6.773	1,62%	5.708	1,74%	18,66%
24	Renault KANGOO	291	94	623	209,57%	-53,29%	6.371	1,53%	4.024	1,23%	58,33%
25	Fiat PALIO WEEKEND	185	244	360	-24,18%	-48,61%	5.830	1,40%	4.563	1,39%	27,77%
26	Chevrolet CORSA SW	177	204	363	-13,24%	-51,24%	5.634	1,35%	4.645	1,41%	21,29%
27	Volkswagen GOL COUNTRY	189	289	245	-34,60%	-22,86%	5.360	1,28%	6.759	2,06%	-20,70%
28	Volkswagen POLO	134	226	441	-40,71%	-69,61%	5.169	1,24%	7.152	2,18%	-27,73%
29	Fiat IDEA	159	158	353	0,63%	-54,96%	5.070	1,21%	2.824	0,86%	79,53%
30	Honda FIT	237	72	532	229,17%	-55,45%	5.015	1,20%	3.775	1,15%	32,85%
31	Volkswagen VENTO	145	88	337	64,77%	-56,97%	4.899	1,17%	2.517	0,77%	94,64%
32	Citroen C4	276		776	N/D	-64,43%	3.786	0,91%		0,00%	N/D
33	Peugeot PARTNER	186	129	256	44,19%	-27,34%	3.688	0,88%	2.974	0,91%	24,01%
34	Honda CIVIC	105	19	239	452,63%	-56,07%	3.244	0,78%	1.722	0,52%	88,39%
35	Citroen BERLINGO	90	123	182	-26,83%	-50,55%	3.071	0,74%	2.328	0,71%	31,92%
36	Renault SCENIC	79	57	165	38,60%	-52,12%	2.884	0,69%	3.203	0,98%	-9,96%
37	Chevrolet VECTRA	81	38	206	113,16%	-60,68%	2.785	0,67%	551	0,17%	405,44%
38	Citroen PICASSO	82	103	176	-20,39%	-53,41%	2.683	0,64%	2.712	0,83%	-1,07%
39	Chevrolet ZAFIRA	83	75	149	10,67%	-44,30%	1.807	0,43%	1.697	0,52%	6,48%
40	Renault LOGAN	90		206	N/D	-56,31%	1.769	0,42%		0,00%	N/D
41	Volkswagen GOLF	75	95	76	-21,05%	-1,32%	1.609	0,39%	3.184	0,97%	-49,47%
42	Volkswagen PASSAT	42	44	100	-4,55%	-58,00%	1.307	0,31%	1.244	0,38%	5,06%
43	Audi A3	39	19	73	105,26%	-46,58%	1.304	0,31%	978	0,30%	33,33%
44	BMW 300 SERIES	10	7	48	42,86%	-79,17%	1.136	0,27%	793	0,24%	43,25%
45	Peugeot 206 SW	85	79	104	7,59%	-18,27%	1.123	0,27%	2.173	0,66%	-48,32%
46	Audi A4	24	19	50	26,32%	-52,00%	1.049	0,25%	887	0,27%	18,26%
47	Toyota COROLLA FIELDER	33	25	70	32,00%	-52,86%	999	0,24%	886	0,27%	12,75%
48	Renault MEGANE II GRAND TOUR	45	1	111	4400,00%	-59,46%	958	0,23%	1	0,00%	95700,00%
49	Fiat PUNTO	113		377	N/D	-70,03%	937	0,22%		0,00%	N/D
50	Mercedes Benz CLASE C	18	15	46	20,00%	-60,87%	900	0,22%	511	0,16%	76,13%
Total		18.709	12.137	29.002			417.581	1	328.398		

Autos - Participacion por Segmento





Patentamientos por Ranking de Livianos y Pesados - Mercado Total

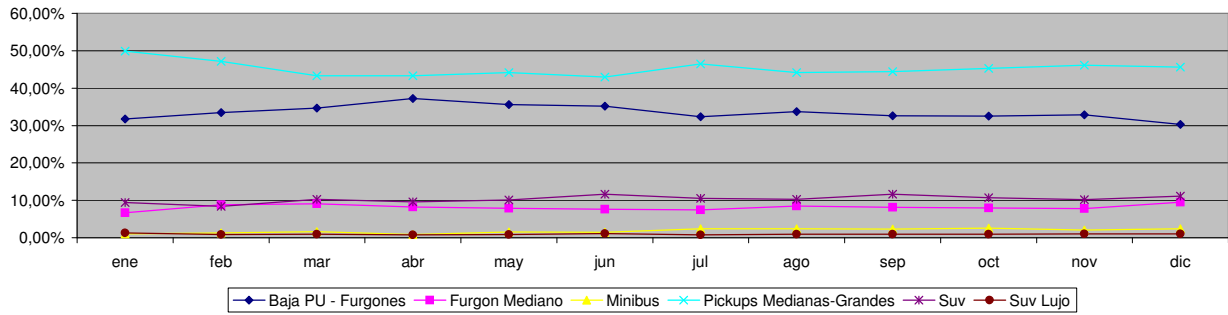
Comercial Liviano											
Rank.	Modelo	dic/07 (a)	dic/06 (b)	nov/07 (c)	Var a-b	Var a-c	Ac. 07	Part %	Ac. 06	Part %	Var 07-06
1	Toyota HILUX	603	474	1.216	27,22%	-50,41%	16.964	18,28%	13.229	17,61%	28,23%
2	Ford RANGER	711	669	1.388	6,28%	-48,78%	14.530	15,65%	12.260	16,32%	18,52%
3	Renault KANGOO FURGON	403	370	961	8,92%	-58,06%	10.993	11,84%	7.123	9,48%	54,33%
4	Chevrolet S-10	286	252	704	13,49%	-59,38%	9.511	10,25%	10.196	13,57%	-6,72%
5	Peugeot PARTNER FURGON	291	315	527	-7,62%	-44,78%	7.019	7,56%	4.975	6,62%	41,09%
6	Fiat FIORINO	150	182	375	-17,58%	-60,00%	4.671	5,03%	3.914	5,21%	19,34%
7	Volkswagen SAVEIRO	106	113	265	-6,19%	-60,00%	4.276	4,61%	2.786	3,71%	53,48%
8	Citroen BERLINGO FURGON	122	119	228	2,52%	-46,49%	3.779	4,07%	2.480	3,30%	52,38%
9	Mercedes Benz SPRINTER	120	147	214	-18,37%	-43,93%	2.934	3,16%	2.778	3,70%	5,62%
10	Ford F 100	77	53	197	45,28%	-60,91%	2.795	3,01%	1.896	2,52%	47,42%
11	Renault MASTER	132	76	226	73,68%	-41,59%	2.543	2,74%	1.772	2,36%	43,51%
12	Toyota HILUX SW4	66	46	141	43,48%	-53,19%	2.211	2,38%	1.850	2,46%	19,51%
13	Honda CRV	83	37	229	124,32%	-63,76%	2.184	2,35%	1.251	1,66%	74,58%
14	Nissan FRONTIER	48	203	100	-76,35%	-52,00%	1.993	2,15%	2.245	2,99%	-11,22%
15	Fiat STRADA	31	78	83	-60,26%	-62,65%	1.386	1,49%	1.192	1,59%	16,28%
16	Iveco DAILY	41	55	73	-25,45%	-43,84%	1.306	1,41%	1.469	1,95%	-11,10%
17	Fiat UNO	38	54	79	-29,63%	-51,90%	1.067	1,15%	961	1,28%	11,03%
18	Volkswagen CADDY	12	61	66	-80,33%	-81,82%	942	1,01%	1.090	1,45%	-13,58%
19	Fiat DUCATO	52	46	89	13,04%	-41,57%	907	0,98%	1.065	1,42%	-14,84%
20	Mitsubishi L200	29	17	74	70,59%	-60,81%	806	0,87%	610	0,81%	32,13%
Total		3.401	3.367	7.235			92.817	1	75.142		

Comercial Pesado											
Rank.	Modelo	dic/07 (a)	dic/06 (b)	nov/07 (c)	Var a-b	Var a-c	Ac. 07	Part %	Ac. 06	Part %	Var 07-06
1	Mercedes Benz LS 1634	57	54	91	5,56%	-37,36%	1.604	10,88%	1.510	14,95%	6,23%
2	Mercedes Benz L-1624	40		110	N/D	-63,64%	1.158	7,86%		0,00%	N/D
3	Mercedes Benz OF 1418	21		56	N/D	-62,50%	1.121	7,60%		0,00%	N/D
4	Volkswagen 17220	28	51	52	-45,10%	-46,15%	1.037	7,03%	826	8,18%	25,54%
5	Ford CARGO 1722	6	78	12	-92,31%	-50,00%	964	6,54%	1.262	12,49%	-23,61%
6	Iveco 450 E	32	35	46	-8,57%	-30,43%	870	5,90%	430	4,26%	102,33%
7	Iveco 170 E	53	18	103	194,44%	-48,54%	849	5,76%	508	5,03%	67,13%
8	Ford F-4000	38	28	64	35,71%	-40,63%	790	5,36%	605	5,99%	30,58%
9	Ford CARGO 1722 E	60		145	N/D	-58,62%	765	5,19%		0,00%	N/D
10	Mercedes Benz L1634	19	21	40	-9,52%	-52,50%	716	4,86%	661	6,54%	8,32%
11	Volkswagen 13180	18	39	59	-53,85%	-69,49%	693	4,70%	629	6,23%	10,17%
12	Mercedes Benz L-1620	5	43	3	-88,37%	66,67%	668	4,53%	1.331	13,17%	-49,81%
13	Mercedes Benz 710	23	23	34	0,00%	-32,35%	549	3,72%	435	4,31%	26,21%
14	Mercedes Benz 1315	5	17	24	-70,59%	-79,17%	537	3,64%	631	6,25%	-14,90%
15	Volkswagen 17310	4	54	11	-92,59%	-63,64%	498	3,38%	537	5,32%	-7,26%
16	Ford CARGO 1832 E	51		80	N/D	-36,25%	461	3,13%		0,00%	N/D
17	Scania R340	11		44	N/D	-75,00%	406	2,75%		0,00%	N/D
18	Renault PREMIUM	23	44	47	-47,73%	-51,06%	392	2,66%	354	3,50%	10,73%
19	Ford CARGO 1730	6	23	4	-73,91%	50,00%	363	2,46%	235	2,33%	54,47%
20	Mercedes Benz O-500	27	7	17	285,71%	58,82%	300	2,04%	149	1,47%	101,34%
Total		527	535	1.042			14.741	1	10.103		

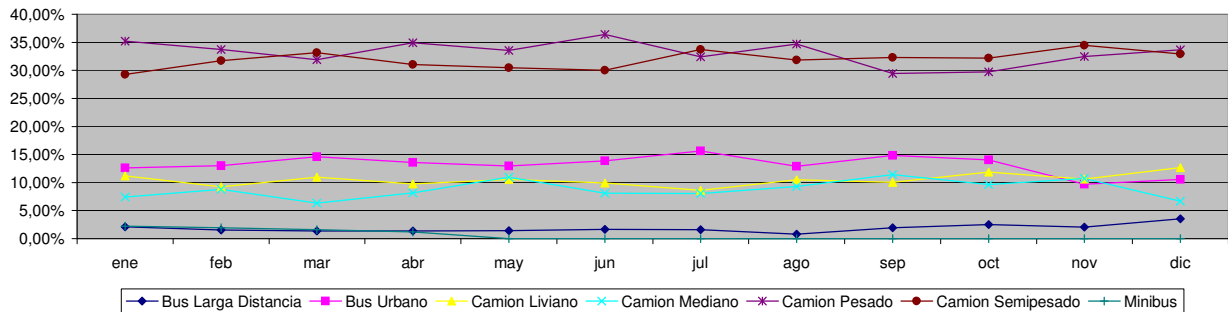


Patentamientos por Ranking de Livianos y Pesados - Mercado Total

Comercial Liviano



Comercial Pesado



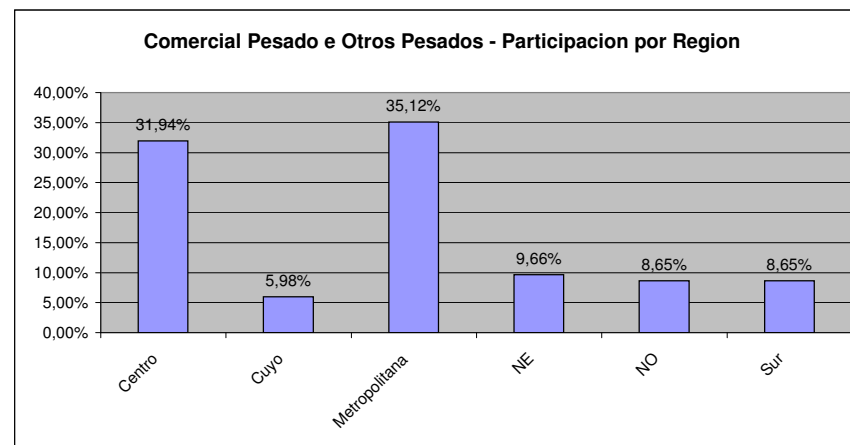
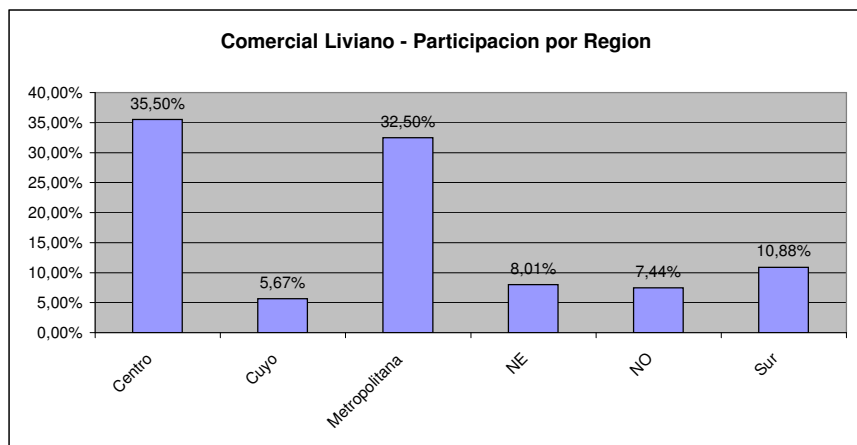
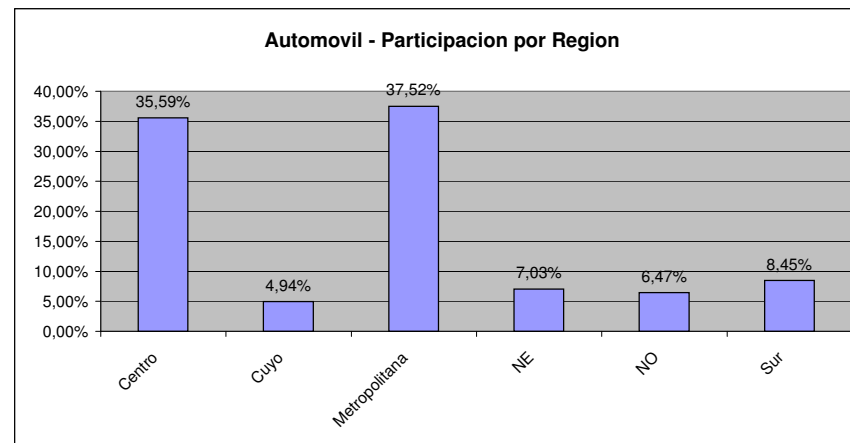
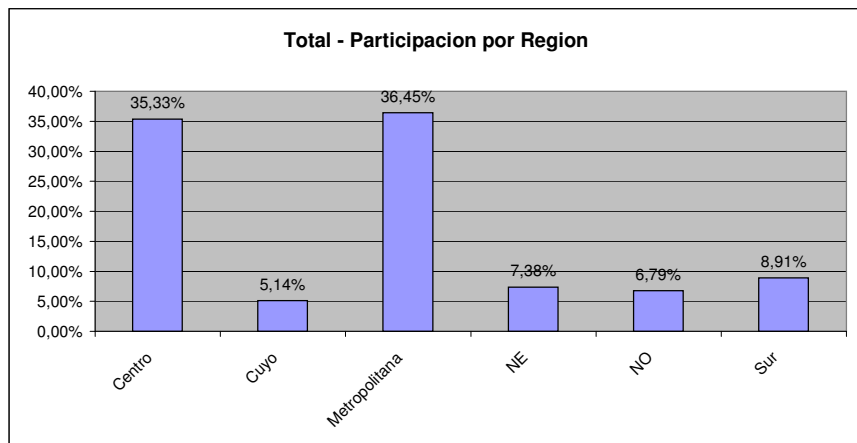


Patentamientos por Provincias y Tipos -

Distrito	Automovil+Comercial Liviano							Comercial Pesado+Otros Pesados							Mercado Total					
	dic/07 (a)	dic/06 (b)	nov/07 (c)	Var a-b	Var a-c	Ac. 07	Ac. 06	Var 07-06	dic/07 (a)	dic/06 (b)	nov/07 (c)	Var a-b	Var a-c	Ac. 07	Ac. 06	Var 07-06	Ac. 07	Ac. 06	Var 07-06	Part %
CAPITAL FEDERAL	6.996	4.998	8.892	39,98%	-21,32%	108.307	92.501	17,09%	402	480	812	-16,25%	-50,49%	9.561	7.483	27,77%	117.868	99.984	17,89%	20,76%
GRAN BUENOS AIRES	3.948	3.131	6.312	26,09%	-37,45%	85.694	67.128	27,66%	117	74	192	58,11%	-39,06%	3.421	2.592	31,98%	89.115	69.720	27,82%	15,69%
BUENOS AIRES	3.059	2.086	5.951	46,64%	-48,60%	82.290	62.640	31,37%	241	228	399	5,70%	-39,60%	4.758	4.090	16,33%	87.048	66.730	30,45%	15,33%
CORDOBA	1.725	1.102	3.287	56,53%	-47,52%	52.124	42.973	21,29%	154	129	312	19,38%	-50,64%	3.267	2.730	19,67%	55.391	45.703	21,20%	9,75%
SANTA FE	1.834	1.098	3.301	67,03%	-44,44%	48.544	37.693	28,79%	143	133	297	7,52%	-51,85%	3.462	3.114	11,18%	52.006	40.807	27,44%	9,16%
MENDOZA	603	407	1.175	48,16%	-48,68%	18.451	13.278	38,96%	48	82	119	-41,46%	-59,66%	1.667	1.775	-6,08%	20.118	15.053	33,65%	3,54%
CHUBUT	527	393	891	34,10%	-40,85%	12.435	10.372	19,89%	37	43	86	-13,95%	-56,98%	1.043	1.066	-2,16%	13.478	11.438	17,84%	2,37%
ENTRE RIOS	352	245	746	43,67%	-52,82%	12.272	9.043	35,71%	34	29	81	17,24%	-58,02%	1.076	958	12,32%	13.348	10.001	33,47%	2,35%
NEUQUEN	372	335	848	11,04%	-56,13%	11.480	9.580	19,83%	41	49	62	-16,33%	-33,87%	862	910	-5,27%	12.342	10.490	17,65%	2,17%
SALTA	324	214	641	51,40%	-49,45%	10.085	6.907	46,01%	34	21	94	61,90%	-63,83%	1.039	729	42,52%	11.124	7.636	45,68%	1,96%
TUCUMAN	393	208	596	88,94%	-34,06%	10.089	6.831	47,69%	24	18	41	33,33%	-41,46%	716	531	34,84%	10.805	7.362	46,77%	1,90%
CORRIENTES	231	146	488	58,22%	-52,66%	8.357	6.156	35,75%	29	28	67	3,57%	-56,72%	1.048	835	25,51%	9.405	6.991	34,53%	1,66%
RIO NEGRO	281	204	618	37,75%	-54,53%	8.500	6.467	31,44%	15	16	32	-6,25%	-53,13%	300	298	0,67%	8.800	6.765	30,08%	1,55%
SANTA CRUZ	443	315	644	40,63%	-31,21%	8.046	5.863	37,23%	22	30	48	-26,67%	-54,17%	632	631	0,16%	8.678	6.494	33,63%	1,53%
CHACO	161	126	435	27,78%	-62,99%	7.510	5.893	27,44%	32	21	66	52,38%	-51,52%	820	591	38,75%	8.330	6.484	28,47%	1,47%
MISIONES	116	120	349	-3,33%	-66,76%	7.008	5.553	26,20%	12	12	29	0,00%	-58,62%	393	565	-30,44%	7.401	6.118	20,97%	1,30%
TIERRA DEL FUEGO	499	397	601	25,69%	-16,97%	6.927	5.818	19,06%	12	32	12	-62,50%	0,00%	360	417	-13,67%	7.287	6.235	16,87%	1,28%
LA PAMPA	202	154	379	31,17%	-46,70%	5.876	4.551	29,11%	20	15	33	33,33%	-39,39%	321	226	42,04%	6.197	4.777	29,73%	1,09%
JUJUY	273	81	246	237,04%	10,98%	5.077	3.683	37,85%	55	50	66	10,00%	-16,67%	955	901	5,99%	6.032	4.584	31,59%	1,06%
SAN JUAN	169	113	301	49,56%	-43,85%	4.764	3.559	33,86%	9	17	28	-47,06%	-67,86%	368	340	8,24%	5.132	3.899	31,62%	0,90%
SANTIAGO DEL ESTERO	81	71	193	14,08%	-58,03%	4.324	2.950	46,58%	15	17	24	-11,76%	-37,50%	316	303	4,29%	4.640	3.253	42,64%	0,82%
SAN LUIS	207	89	294	132,58%	-29,59%	3.785	2.870	31,88%	10	26	10	-61,54%	0,00%	175	205	-14,63%	3.960	3.075	28,78%	0,70%
CATAMARCA	86	75	247	14,67%	-65,18%	3.357	2.387	40,64%	1	6	8	-83,33%	-87,50%	92	121	-23,97%	3.449	2.508	37,52%	0,61%
FORMOSA	66	55	143	20,00%	-53,85%	3.179	2.533	25,50%	2	6	11	-66,67%	-81,82%	234	113	107,08%	3.413	2.646	28,99%	0,60%
LA RIOJA	72	28	129	157,14%	-44,19%	2.403	1.951	23,17%	13	2	6	550,00%	116,67%	80	133	-39,85%	2.483	2.084	19,15%	0,44%



Patentamientos por Provincias y Tipos -





Patentamientos por Regiones de Buenos Aires

Subregion	Automovil+Comercial Liviano								Comercial Pesado+Otros Pesados								Mercado Total		
	dic/07 (a)	dic/06 (b)	nov/07 (c)	Var a-b	Var a-c	Ac. 07	Ac. 06	Var 07-06	dic/07 (a)	dic/06 (b)	nov/07 (c)	Var a-b	Var a-c	Ac. 07	Ac. 06	Var 07-06	Ac. 07	Ac. 06	Var 07-06
GRAN BUENOS AIRES-OESTE	1.621	1.176	2.449	37,84%	-33,81%	34.202	26.106	31,01%	47	35	81	34,29%	-41,98%	1.456	1.144	27,27%	35.658	27.250	30,86%
GRAN BUENOS AIRES-SUR	1.476	1.119	2.343	31,90%	-37,00%	30.809	23.778	29,57%	50	31	78	61,29%	-35,90%	1.395	1.026	35,96%	32.204	24.804	29,83%
GRAN BUENOS AIRES-NORTE	851	836	1.520	1,79%	-44,01%	20.683	17.244	19,94%	20	8	33	150,00%	-39,39%	570	422	35,07%	21.253	17.666	20,30%
BUENOS AIRES-NORTE	720	512	1.268	40,63%	-43,22%	17.662	13.408	31,73%	50	34	96	47,06%	-47,92%	1.166	921	26,60%	18.828	14.329	31,40%
BUENOS AIRES-ATLANTICA	465	342	1.049	35,96%	-55,67%	15.314	11.765	30,17%	41	19	40	115,79%	2,50%	541	445	21,57%	15.855	12.210	29,85%
BUENOS AIRES-LA PLATA	744	496	1.259	50,00%	-40,91%	15.354	11.262	36,33%	10	31	22	-67,74%	-54,55%	243	265	-8,30%	15.597	11.527	35,31%
BUENOS AIRES-OESTE	412	268	876	53,73%	-52,97%	13.449	10.540	27,60%	67	47	102	42,55%	-34,31%	1.365	1.111	22,86%	14.814	11.651	27,15%
BUENOS AIRES-CENTRO	363	233	789	55,79%	-53,99%	10.227	7.800	31,12%	39	50	61	-22,00%	-36,07%	784	694	12,97%	11.011	8.494	29,63%
BUENOS AIRES-SUR	355	235	710	51,06%	-50,00%	10.284	7.865	30,76%	34	47	78	-27,66%	-56,41%	659	654	0,76%	10.943	8.519	28,45%



Patentamientos por Regiones de Buenos Aires

