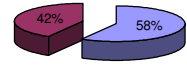




Patentamientos por Marcas - Mercado Total

	jun/08(a)	may/08(b)	jun/07(c)	jun/06(d)	Var a-b	Var a-c	Var a-d	Ac. 08	Ac. 07	Var 08-07
Automovil	36.645	42.158	31.598	27.203	-13,08%	15,97%	34,71%	253.212	226.012	12,03%
Comercial Liviano	9.474	11.072	7.614	6.813	-14,43%	24,43%	39,06%	65.048	54.477	19,40%
Comercial Pesado	1.856	2.226	1.790	1.599	-16,62%	3,69%	16,07%	12.492	11.607	7,62%
Otros Pesados	1.111	1.358	1.143	963	-18,19%	-2,80%	15,37%	7.872	7.715	2,03%
Total	49.086	56.814	42.145	36.578	-13,60%	16,47%	34,20%	338.624	299.811	12,95%
Prom. diario	2.454	2.705	2.107	1.742				2.753	2.437	
Dias habiles	20	21	20	21				123	123	

Patentamientos por origen	
	Jun-08 Ac. 08
Importados	29.478 197.555
Nacionales	19.608 140.998



Importados Nacionales

Patentamientos Mensuales

	ene	feb	mar	abr	may	jun	jul	ago	sep	oct	nov	dic
2008	85.813	46.480	44.278	56.153	56.814	49.086						
2007	82.562	38.847	47.385	41.637	47.235	42.145	50.197	54.288	48.859	49.505	40.642	24.538
Var% 08-07	3,94%	19,65%	-6,56%	34,86%	20,28%	16,47%	-100,00%	-100,00%	-100,00%	-100,00%	-100,00%	-100,00%
2006	65.992	32.436	40.418	34.273	38.298	36.581	36.966	39.131	39.655	36.025	33.283	17.750
2005	52.439	26.340	30.580	32.955	33.460	32.579	34.182	31.919	36.151	30.591	29.390	15.980

Patentamientos por Marcas - Totales

Marca	jun/08(a)		jun/07(c)		may/08(e)		Var a-c		2008		2007		Var 2008-2007
	Part %	Part %	Part %	Part %	Var a-e	ene - jun	Part %	ene - jun	Part %				
Volkswagen	9.488	19,78%	7.174	17,52%	10.471	18,89%	32,26%	-9,39%	58.412	17,67%	57.014	19,47%	2,45%
Chevrolet	6.707	13,98%	5.946	14,52%	7.580	13,67%	12,80%	-11,52%	47.307	14,31%	42.943	14,66%	10,16%
Ford	5.701	11,89%	5.969	14,57%	6.339	11,43%	-4,49%	-10,06%	40.942	12,39%	38.933	13,29%	5,16%
Renault	4.598	9,59%	5.200	12,70%	7.578	13,67%	-11,58%	-39,32%	39.968	12,09%	37.100	12,67%	7,73%
Fiat	5.240	10,93%	3.792	9,26%	5.573	10,05%	38,19%	-5,98%	35.831	10,84%	29.690	10,14%	20,68%
Peugeot	5.309	11,07%	4.664	11,39%	5.507	9,93%	13,83%	-3,60%	34.477	10,43%	32.062	10,95%	7,53%
Toyota	2.613	5,45%	2.192	5,35%	2.949	5,32%	19,21%	-11,39%	16.617	5,03%	15.313	5,23%	8,52%
Citroen	1.547	3,23%	1.511	3,69%	2.009	3,62%	2,38%	-23,00%	13.706	4,15%	10.595	3,62%	29,36%
Honda	1.649	3,44%	1.027	2,51%	1.691	3,05%	60,56%	-2,48%	10.821	3,27%	5.087	1,74%	112,72%
Mercedes Benz	1.085	2,26%	1.039	2,54%	1.338	2,41%	4,43%	-18,91%	7.830	2,37%	7.056	2,41%	10,97%
Suzuki	848	1,77%	623	1,52%	1.002	1,81%	36,12%	-15,37%	4.603	1,39%	4.751	1,62%	-3,12%
Nissan	539	1,12%	224	0,55%	738	1,33%	140,63%	-26,96%	3.512	1,06%	1.649	0,56%	112,98%
Iveco	431	0,90%	276	0,67%	484	0,87%	56,16%	-10,95%	2.510	0,76%	1.848	0,63%	35,82%
Hyundai	426	0,89%	154	0,38%	456	0,82%	176,62%	-6,58%	2.375	0,72%	889	0,30%	167,15%
Audi	237	0,49%	150	0,37%	305	0,55%	58,00%	-22,30%	1.895	0,57%	1.539	0,53%	23,13%
Kia	310	0,65%	118	0,29%	262	0,47%	162,71%	18,32%	1.727	0,52%	945	0,32%	82,75%
BMW	193	0,40%	216	0,53%	217	0,39%	-10,65%	-11,06%	1.646	0,50%	1.410	0,48%	16,74%
Mitsubishi	159	0,33%	84	0,21%	169	0,30%	89,29%	-5,92%	1.021	0,31%	636	0,22%	60,53%
Jeep	114	0,24%	103	0,25%	168	0,30%	10,68%	-32,14%	937	0,28%	584	0,20%	60,45%
Scania	132	0,28%	178	0,43%	131	0,24%	-25,84%	0,76%	870	0,26%	776	0,26%	12,11%
Chrysler	191	0,40%	86	0,21%	86	0,16%	122,09%	122,09%	810	0,25%	531	0,18%	52,54%
Volvo	90	0,19%	63	0,15%	111	0,20%	42,86%	-18,92%	667	0,20%	379	0,13%	75,99%
Dodge	130	0,27%	36	0,09%	28	0,05%	261,11%	364,29%	553	0,17%	222	0,08%	149,10%
Subaru	29	0,06%	31	0,08%	57	0,10%	-6,45%	-49,12%	297	0,09%	203	0,07%	46,31%
Agrale	50	0,10%	36	0,09%	58	0,10%	38,89%	-13,79%	288	0,09%	223	0,08%	29,15%
Mini	31	0,06%	33	0,08%	35	0,06%	-6,06%	-11,43%	244	0,07%	203	0,07%	20,20%
Seat	46	0,10%	1	0,00%	30	0,05%	4500,00%	53,33%	199	0,06%	1	0,00%	19800,00%
Puma de Tat	25	0,05%		0,00%	28	0,05%	N/D	-10,71%	187	0,06%	77	0,03%	142,86%
Land Rover	29	0,06%	7	0,02%	19	0,03%	314,29%	52,63%	136	0,04%	90	0,03%	51,11%
Porsche	11	0,02%	10	0,02%	18	0,03%	10,00%	-38,89%	119	0,04%	71	0,02%	67,61%
Alfa Romeo	1	0,00%	8	0,02%	1	0,00%	-87,50%	0,00%	24	0,01%	35	0,01%	-31,43%
Hummer	1	0,00%	1	0,00%		0,00%	0,00%	N/D	2	0,00%	5	0,00%	-60,00%
Ferrari		0,00%	1	0,00%		0,00%	-100,00%	N/D	1	0,00%	4	0,00%	-75,00%
Jaguar		0,00%	1	0,00%		0,00%	-100,00%	N/D	1	0,00%	11	0,00%	-90,91%
Lamborghini		0,00%		0,00%		0,00%	N/D	N/D	1	0,00%		0,00%	N/D
Isuzu		0,00%		0,00%		0,00%	N/D	N/D		0,00%	9	0,00%	-100,00%
Maserati		0,00%		0,00%		0,00%	N/D	N/D		0,00%	3	0,00%	-100,00%
Total	47.960		40.954		55.438				330.536		292.887		

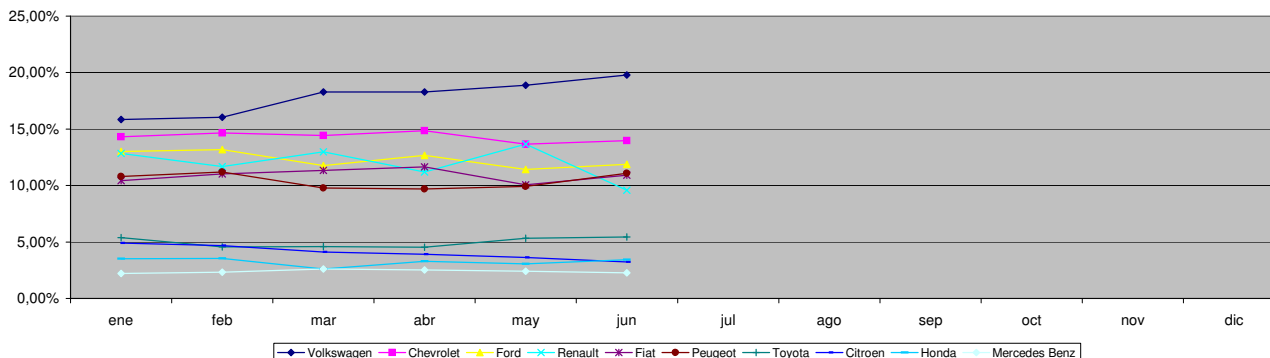


Patentamientos por Marcas - Mercado Total

Patentamientos por Marcas - Autos + Livianos								2008	2008	2007	2007	Var	
Marca	jun/08(a)	Part %	jun/07(c)	Part %	may/08(e)	Part %	Var a-c	Var a-e	ene - jun	Part %	ene - jun	Part %	2008-2007
Volkswagen	9.271	20,10%	6.940	17,70%	10.197	19,16%	33,59%	-9,08%	56.819	17,85%	55.423	19,76%	2,52%
Chevrolet	6.707	14,54%	5.946	15,16%	7.580	14,24%	12,80%	-11,52%	47.307	14,86%	42.943	15,31%	10,16%
Renault	4.546	9,86%	5.147	13,13%	7.502	14,09%	-11,68%	-39,40%	39.626	12,45%	35.670	12,72%	11,09%
Ford	5.342	11,58%	5.643	14,39%	5.893	11,07%	-5,33%	-9,35%	38.414	12,07%	36.388	12,97%	5,57%
Fiat	5.240	11,36%	3.792	9,67%	5.573	10,47%	38,19%	-5,98%	35.831	11,26%	29.690	10,59%	20,68%
Peugeot	5.309	11,51%	4.664	11,89%	5.507	10,35%	13,83%	-3,60%	34.477	10,83%	32.062	11,43%	7,53%
Toyota	2.613	5,67%	2.192	5,59%	2.949	5,54%	5,54%	-11,39%	16.617	5,22%	15.313	5,46%	8,52%
Citroen	1.547	3,35%	1.511	3,85%	2.009	3,77%	2,38%	-23,00%	13.706	4,31%	10.595	3,78%	29,36%
Honda	1.649	3,58%	1.027	2,62%	1.691	3,18%	60,56%	-2,48%	10.821	3,40%	5.087	1,81%	112,72%
Suzuki	848	1,84%	623	1,59%	1.002	1,88%	36,12%	-15,37%	4.603	1,45%	4.751	1,69%	-3,12%
Mercedes Benz	463	1,00%	324	0,83%	591	1,11%	42,90%	-21,66%	3.600	1,13%	2.679	0,96%	34,38%
Nissan	539	1,17%	224	0,57%	738	1,39%	140,63%	-26,96%	3.512	1,10%	1.649	0,59%	112,98%
Hyundai	402	0,87%	152	0,39%	436	0,82%	164,47%	-7,80%	2.297	0,72%	853	0,30%	169,28%
Audi	237	0,51%	150	0,38%	305	0,57%	58,00%	-22,30%	1.895	0,60%	1.539	0,55%	23,13%
Kia	310	0,67%	100	0,26%	262	0,49%	210,00%	-18,32%	1.727	0,54%	879	0,31%	96,47%
BMW	193	0,42%	216	0,55%	217	0,41%	-6,45%	-11,06%	1.646	0,52%	1.410	0,50%	16,74%
Mitsubishi	159	0,34%	84	0,21%	169	0,32%	89,29%	-5,92%	1.021	0,32%	636	0,23%	60,53%
Jeep	114	0,25%	103	0,26%	168	0,32%	10,68%	-32,14%	937	0,29%	584	0,21%	60,45%
Chrysler	191	0,41%	86	0,22%	86	0,16%	122,09%	122,09%	810	0,25%	531	0,19%	52,54%
Iveco	129	0,28%	117	0,30%	130	0,24%	10,26%	-0,77%	744	0,23%	771	0,27%	-3,50%
Dodge	130	0,28%	36	0,09%	28	0,05%	261,11%	364,29%	553	0,17%	222	0,08%	149,10%
Subaru	29	0,06%	31	0,08%	57	0,11%	-6,45%	-49,12%	297	0,09%	203	0,07%	46,31%
Volvo	32	0,07%	41	0,10%	35	0,07%	-21,95%	-8,57%	269	0,08%	178	0,06%	51,12%
Mini	31	0,07%	33	0,08%	35	0,07%	-6,06%	-11,43%	244	0,08%	203	0,07%	20,20%
Seat	46	0,10%	1	0,00%	30	0,06%	4500,00%	53,33%	199	0,06%	1	0,00%	19800,00%
Land Rover	29	0,06%	7	0,02%	19	0,04%	314,29%	52,63%	136	0,04%	90	0,03%	51,11%
Porsche	11	0,02%	10	0,03%	18	0,03%	10,00%	-38,89%	119	0,04%	71	0,03%	67,61%
Alfa Romeo	1	0,00%	8	0,02%	1	0,00%	-87,50%	0,00%	24	0,01%	35	0,01%	-31,43%
Hummer	1	0,00%	1	0,00%		0,00%	0,00%	N/D	2	0,00%	5	0,00%	-60,00%
Ferrari		0,00%	1	0,00%		0,00%	-100,00%	N/D	1	0,00%	4	0,00%	-75,00%
Jaguar		0,00%	1	0,00%		0,00%	-100,00%	N/D	1	0,00%	11	0,00%	-90,91%
Lamborghini		0,00%		0,00%		0,00%	N/D	N/D	1	0,00%		0,00%	N/D
Agrale		0,00%	1	0,00%		0,00%	-100,00%	N/D		0,00%	1	0,00%	-100,00%
Isuzu		0,00%		0,00%		0,00%	N/D	N/D		0,00%	9	0,00%	-100,00%
Maserati		0,00%		0,00%		0,00%	N/D	N/D		0,00%	3	0,00%	-100,00%
Total	46.119		39.212		53.228				318.256		280.489		

Patentamientos por Marcas - Camiones + Buses								2008	2008	2007	2007	Var	
Marca	jun/08(a)	Part %	jun/07(c)	Part %	may/08(e)	Part %	Var a-c	Var a-e	ene - jun	Part %	ene - jun	Part %	2008-2007
Mercedes Benz	622	33,79%	715	41,04%	747	33,80%	-13,01%	-16,73%	4.230	34,45%	4.377	35,30%	-3,36%
Ford	359	19,50%	326	18,71%	446	20,18%	10,12%	-19,51%	2.528	20,59%	2.545	20,53%	-0,67%
Iveco	302	16,40%	159	9,13%	354	16,02%	89,94%	-14,69%	1.766	14,38%	1.077	8,69%	63,97%
Volkswagen	217	11,79%	234	13,43%	274	12,40%	-7,26%	-20,80%	1.593	12,97%	1.591	12,83%	0,13%
Scania	132	7,17%	178	10,22%	131	5,93%	-25,84%	0,76%	870	7,08%	776	6,26%	12,11%
Volvo	58	3,15%	22	1,26%	76	3,44%	163,64%	-23,68%	398	3,24%	201	1,62%	98,01%
Renault	52	2,82%	53	3,04%	76	3,44%	-1,89%	-31,58%	342	2,79%	1.430	11,53%	-76,08%
Agrale	50	2,72%	35	2,01%	58	2,62%	42,86%	-13,79%	288	2,35%	222	1,79%	29,73%
Puma de Tat	25	1,36%		0,00%	28	1,27%	N/D	-10,71%	187	1,52%	77	0,62%	142,86%
Hyundai	24	1,30%	2	0,11%	20	0,90%	1100,00%	20,00%	78	0,64%	36	0,29%	116,67%
Kia		0,00%	18	1,03%		0,00%	-100,00%	N/D		0,00%	66	0,53%	-100,00%
Total	1.841		1.742		2.210				12.280		12.398		

Participacion por Marcas - Evolucion Mensual

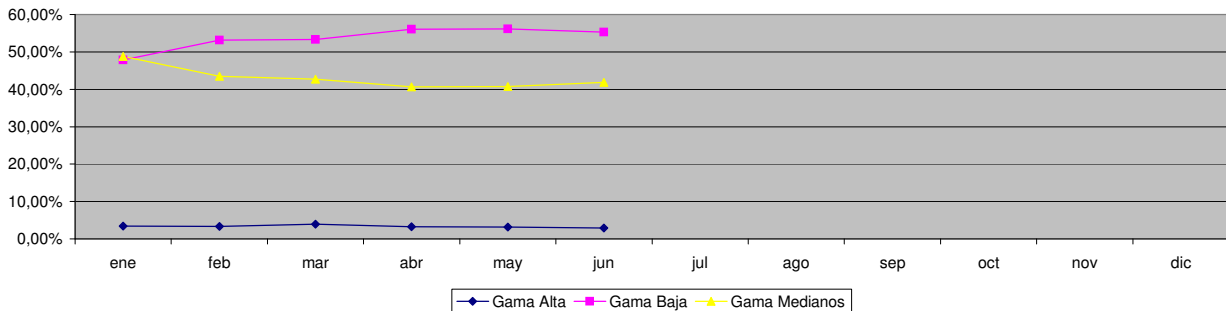




Patentamientos por Ranking de Automoviles - Mercado Total

Rank.	Modelo	Ranking Por Modelos - Automoviles									
		jun/08 (a)	jun/07 (b)	may/08 (c)	Var a-b	Var a-c	Ac. 08	Part %	Ac. 07	Part %	Var 08-07
1	Volkswagen GOL	3.888	2.470	4.535	57,41%	-14,27%	22.600	8,93%	21.845	9,67%	3,46%
2	Chevrolet CORSA	2.651	2.831	2.977	-6,36%	-10,95%	19.425	7,67%	17.975	7,95%	8,07%
3	Peugeot 206	3.011	2.222	2.919	35,51%	3,15%	17.432	6,88%	15.688	6,94%	11,12%
4	Peugeot 307	1.339	1.251	1.385	7,03%	-3,32%	10.228	4,04%	9.028	3,99%	13,29%
5	Ford ECOSPORT	1.398	1.200	1.422	16,50%	-1,69%	9.701	3,83%	7.722	3,42%	25,63%
6	Renault CLIO	1.195	1.296	2.192	-7,79%	-45,48%	9.145	3,61%	12.450	5,51%	-26,55%
7	Volkswagen SURAN	1.239	1.025	1.417	20,88%	-12,56%	8.862	3,50%	8.215	3,63%	7,88%
8	Volkswagen FOX/CROSSFOX	1.208	1.128	1.248	7,09%	-3,21%	7.473	2,95%	6.874	3,04%	8,71%
9	Fiat SIENA	1.088	675	1.186	61,19%	-8,26%	7.407	2,93%	5.552	2,46%	33,41%
10	Ford FIESTA	1.044	1.515	1.158	-31,09%	-9,84%	7.375	2,91%	8.467	3,75%	-12,90%
11	Fiat UNO	951	663	1.095	43,44%	-13,15%	6.880	2,72%	5.917	2,62%	16,28%
12	Renault MEGANE	654	1.279	871	-48,87%	-24,91%	6.613	2,61%	8.007	3,54%	-17,41%
13	Fiat PALIO	1.027	1.086	950	-5,43%	8,11%	6.536	2,58%	7.712	3,41%	-15,25%
14	Chevrolet ASTRA	863	622	1.032	38,75%	-16,38%	6.083	2,40%	4.677	2,07%	30,06%
15	Volkswagen BORA	1.114	676	887	64,79%	25,59%	6.008	2,37%	5.087	2,25%	18,10%
16	Ford FOCUS	660	867	753	-23,88%	-12,35%	5.679	2,24%	5.389	2,38%	5,38%
17	Citroen C4	666	31	779	2048,39%	-14,51%	5.538	2,19%	64	0,03%	8553,13%
18	Chevrolet CORSA II	677	737	751	-8,14%	-9,85%	4.941	1,95%	5.232	2,31%	-5,56%
19	Honda FIT	646	369	721	75,07%	-10,40%	4.680	1,85%	2.188	0,97%	113,89%
20	Fiat PUNTO	633		728	N/D	-13,05%	4.666	1,84%		0,00%	N/D
21	Renault KANGOO	540	527	609	2,47%	-11,33%	4.567	1,80%	2.338	1,03%	95,34%
22	Chevrolet MERIVA	677	538	700	25,84%	-3,29%	4.559	1,80%	4.600	2,04%	-0,89%
23	Ford KA	833	715	980	16,50%	-15,00%	4.555	1,80%	5.136	2,27%	-11,31%
24	Toyota COROLLA	769	557	1.018	38,06%	-24,46%	3.697	1,46%	3.812	1,69%	-3,02%
25	Suzuki FUN	647	549	830	17,85%	-22,05%	3.422	1,35%	4.288	1,90%	-20,20%
26	Honda CIVIC	528	327	472	61,47%	11,86%	3.306	1,31%	1.545	0,68%	113,98%
27	Citroen C3	264	648	431	-59,26%	-38,75%	3.192	1,26%	4.910	2,17%	-34,99%
28	Renault MEGANE II	331	475	467	-30,32%	-29,12%	3.068	1,21%	3.618	1,60%	-15,20%
29	Renault LOGAN	262	251	674	4,38%	-61,13%	3.056	1,21%	269	0,12%	1036,06%
30	Volkswagen VENTO	413	267	334	54,68%	23,65%	2.974	1,17%	2.731	1,21%	8,90%
31	Chevrolet CORSA SW	427	465	420	-8,17%	1,67%	2.855	1,13%	3.202	1,42%	-10,84%
32	Renault SANDERO	327		616	N/D	-46,92%	2.683	1,06%		0,00%	N/D
33	Fiat IDEA	382	366	404	4,37%	-5,45%	2.679	1,06%	2.543	1,13%	5,35%
34	Fiat PALIO WEEKEND	230	436	272	-47,25%	-15,44%	2.446	0,97%	3.196	1,41%	-23,47%
35	Volkswagen POLO	322	531	434	-39,36%	-25,81%	2.151	0,85%	2.686	1,19%	-19,92%
36	Chevrolet VECTRA	375	165	399	127,27%	-6,02%	2.048	0,81%	1.302	0,58%	57,30%
37	Volkswagen GOL COUNTRY	339	288	457	17,71%	-25,82%	2.013	0,79%	2.890	1,28%	-30,35%
38	Peugeot PARTNER	200	315	282	-36,51%	-29,08%	1.715	0,68%	1.889	0,84%	-9,21%
39	Citroen BERLINGO	190	240	247	-20,83%	-23,08%	1.616	0,64%	1.727	0,76%	-6,43%
40	Nissan TIIDA	248		382	N/D	-35,08%	1.536	0,61%		0,00%	N/D
41	Renault SCENIC	162	286	281	-43,36%	-42,35%	1.483	0,59%	1.850	0,82%	-19,84%
42	Citroen PICASSO	154	211	191	-27,01%	-19,37%	1.330	0,53%	1.629	0,72%	-18,35%
43	Chevrolet ZAFIRA	185	85	191	117,65%	-3,14%	1.159	0,46%	906	0,40%	27,92%
44	Volkswagen GOLF	188	64	180	193,75%	4,44%	1.125	0,44%	1.054	0,47%	6,74%
45	Audi A3	152	68	186	123,53%	-18,28%	1.022	0,40%	748	0,33%	36,63%
46	Mercedes Benz CLASE C	104	32	155	225,00%	-32,90%	932	0,37%	505	0,22%	84,55%
47	BMW 300 SERIES	83	104	86	-20,19%	-3,49%	763	0,30%	716	0,32%	6,56%
48	Volkswagen PASSAT	84	74	122	13,51%	-31,15%	752	0,30%	761	0,34%	-1,18%
49	Chrysler PT CRUISER	177	67	54	164,18%	227,78%	686	0,27%	412	0,18%	66,50%
50	Peugeot 206 SW	54	101	49	-46,53%	10,20%	605	0,24%	578	0,26%	4,67%
51	Otros	1.046	903	1.229	15,84%	-14,89%	7.944	3,14%	6.082	2,69%	30,61%
Total		36.645	31.598	42.158			253.211	1	226.012		

Autos - Participacion por Segmento





Patentamientos por Ranking de Livianos y Pesados - Mercado Total

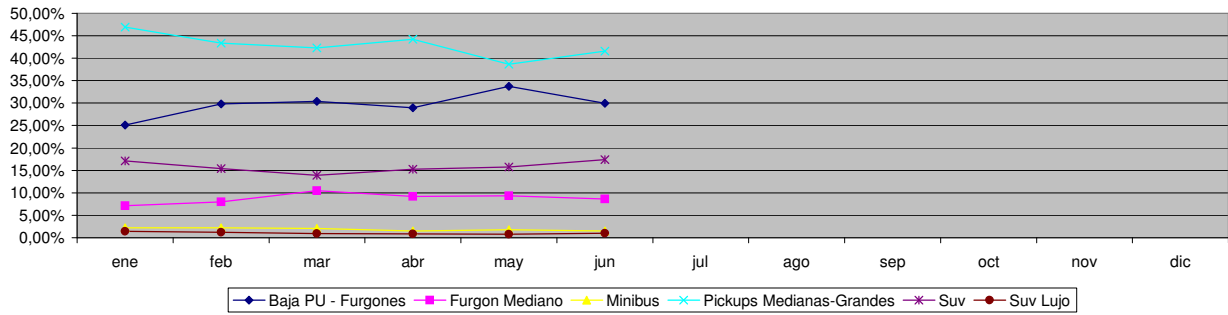
Comercial Liviano											
Rank.	Modelo	jun/08 (a)	jun/07 (b)	may/08 (c)	Var a-b	Var a-c	Ac. 08	Part %	Ac. 07	Part %	Var 08-07
1	Toyota HILUX	1.522	1.316	1.555	15,65%	-2,12%	10.248	15,76%	9.277	17,03%	10,47%
2	Ford RANGER	1.169	1.017	1.259	14,95%	-7,15%	8.807	13,54%	7.728	14,19%	13,96%
3	Renault KANGOO FURGON	811	845	1.356	-4,02%	-40,19%	6.643	10,21%	5.691	10,45%	16,73%
4	Chevrolet S-10	652	473	860	37,84%	-24,19%	5.067	7,79%	4.753	8,72%	6,61%
5	Peugeot PARTNER FURGON	566	620	712	-8,71%	-20,51%	3.664	5,63%	3.901	7,16%	-6,08%
6	Fiat FIORINO	609	299	656	103,68%	-7,16%	3.285	5,05%	2.524	4,63%	30,15%
7	Honda CRV	416	276	421	50,72%	-1,19%	2.564	3,94%	982	1,80%	161,10%
8	Mercedes Benz SPRINTER	256	212	350	20,75%	-26,86%	2.046	3,15%	1.663	3,05%	23,03%
9	Volkswagen SAVEIRO	341	271	417	25,83%	-18,23%	1.880	2,89%	2.289	4,20%	-17,87%
10	Citroen BERLINGO FURGON	222	339	311	-34,51%	-28,62%	1.762	2,71%	2.003	3,68%	-12,03%
11	Renault MASTER	206	91	325	126,37%	-36,62%	1.723	2,65%	952	1,75%	80,99%
12	Ford F 100	152	247	212	-38,46%	-28,30%	1.442	2,22%	1.453	2,67%	-0,76%
13	Toyota HILUX SW4	177	163	203	8,59%	-12,81%	1.432	2,20%	1.250	2,29%	14,56%
14	Nissan FRONTIER	178	133	230	33,83%	-22,61%	1.249	1,92%	1.024	1,88%	21,97%
15	Hyundai TUCSON	156	48	136	225,00%	14,71%	814	1,25%	209	0,38%	289,47%
16	Mitsubishi L200	137	58	132	136,21%	3,79%	738	1,13%	445	0,82%	65,84%
17	Iveco DAILY	129	117	130	10,26%	-0,77%	730	1,12%	771	1,42%	-5,32%
18	Chevrolet CAPTIVA	151		167	N/D	-9,58%	713	1,10%		0,00%	N/D
19	Fiat DUCATO	77	70	110	10,00%	-30,00%	679	1,04%	451	0,83%	50,55%
20	Hyundai SANTA FE	117	12	150	875,00%	-22,00%	668	1,03%	179	0,33%	273,18%
21	Otros	1.430	1.007	1.378	42,01%	3,77%	8.891	13,67%	6.932	12,72%	28,26%
Total		9.474	7.614	11.070			65.045	1	54.477		

Comercial Pesado											
Rank.	Modelo	jun/08 (a)	jun/07 (b)	may/08 (c)	Var a-b	Var a-c	Ac. 08	Part %	Ac. 07	Part %	Var 08-07
1	Ford CARGO 1722 E	116	33	178	251,52%	-34,83%	951	7,75%	84	0,74%	1032,14%
2	Mercedes Benz LS 1634	65	161	106	-59,63%	-38,68%	690	5,62%	939	8,29%	-26,52%
3	Iveco 170 E	128	58	144	120,69%	-11,11%	666	5,43%	355	3,13%	87,61%
4	Mercedes Benz OF 1418	97	140	146	-30,71%	-33,56%	608	4,95%	523	4,62%	16,25%
5	Ford F-4000	78	71	116	9,86%	-32,76%	551	4,49%	407	3,59%	35,88%
6	Mercedes Benz L-1624	33	151	51	-78,15%	-35,29%	484	3,94%	400	3,53%	21,00%
7	Volkswagen 17220	67	65	75	3,08%	-10,67%	475	3,87%	484	4,27%	-1,86%
8	Iveco 450 E	68	70	71	-2,86%	-4,23%	469	3,82%	442	3,90%	6,11%
9	Ford CARGO 1832 E	57	28	57	103,57%	0,00%	408	3,32%	61	0,54%	568,85%
10	Mercedes Benz 1315	66	16	99	312,50%	-33,33%	399	3,25%	276	2,44%	44,57%
11	Mercedes Benz ATEGO 1725	82		75	N/D	9,33%	368	3,00%		0,00%	N/D
12	Mercedes Benz 710	36	40	37	-10,00%	-2,70%	306	2,49%	289	2,55%	5,88%
13	Volkswagen 13180	29	50	34	-42,00%	-14,71%	278	2,26%	310	2,74%	-10,32%
14	Mercedes Benz L1634	37	53	40	-30,19%	-7,50%	276	2,25%	401	3,54%	-31,17%
15	Volkswagen 19320	41	21	53	95,24%	-22,64%	258	2,10%	30	0,26%	760,00%
16	Volkswagen 17250 E	31	6	43	416,67%	-27,91%	230	1,87%	6	0,05%	3733,33%
17	Renault PREMIUM	27	35	49	-22,86%	-44,90%	229	1,87%	168	1,48%	36,31%
18	Iveco 490 S	26		55	N/D	-52,73%	212	1,73%		0,00%	N/D
19	Mercedes Benz O-500	30	33	26	-9,09%	15,38%	210	1,71%	203	1,79%	3,45%
20	Mercedes Benz OF 1722	40	20	56	100,00%	-28,57%	199	1,62%	114	1,01%	74,56%
21	Otros	687	691	695	-0,58%	-1,15%	4.009	32,66%	5.838	51,53%	-31,33%
Total		1.841	1.742	2.206			12.276	1	11.330		

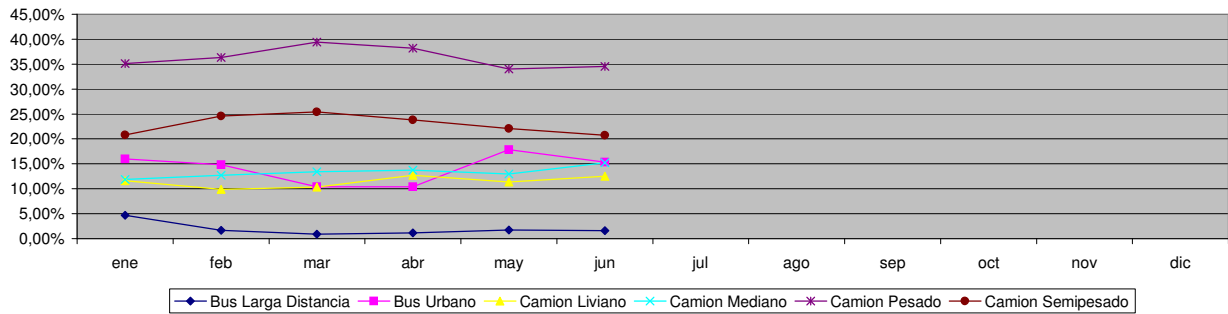


Patentamientos por Ranking de Livianos y Pesados - Mercado Total

Comercial Liviano



Comercial Pesado



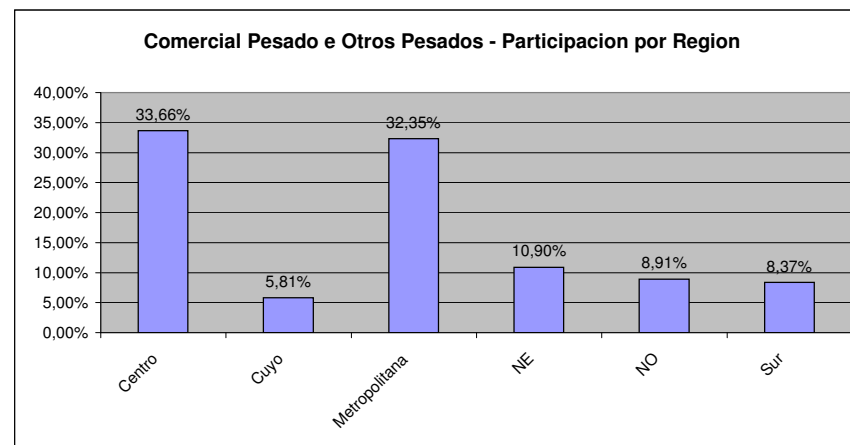
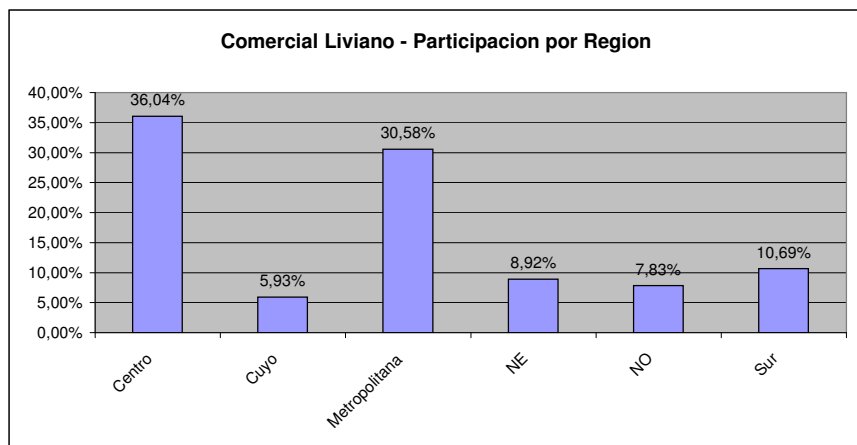
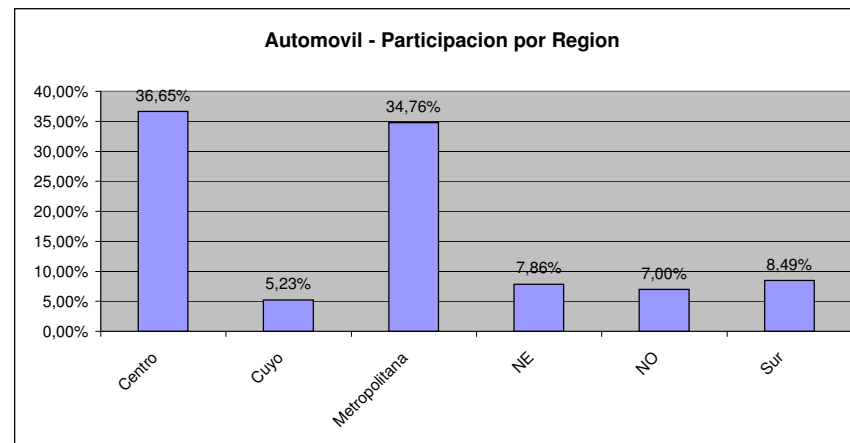
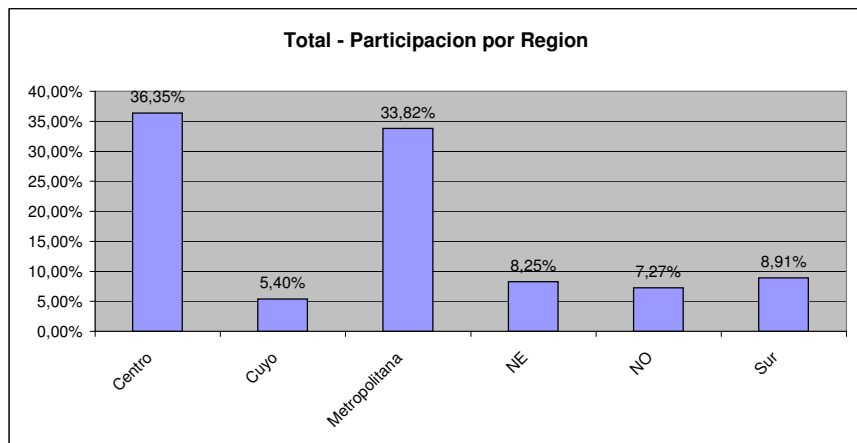


Patentamientos por Provincias y Tipos -

Distrito	Automovil+Comercial Liviano							Comercial Pesado+Otros Pesados							Mercado Total					
	jun/08 (a)	jun/07 (b)	may/08 (c)	Var a-b	Var a-c	Ac. 08	Ac. 07	Var 08-07	jun/08 (a)	jun/07 (b)	may/08 (c)	Var a-b	Var a-c	Ac. 08	Ac. 07	Var 08-07	Ac. 08	Ac. 07	Var 08-07	Part %
CAPITAL FEDERAL	8.918	7.947	9.887	12,22%	-9,80%	57.226	54.966	4,11%	709	685	925	3,50%	-23,35%	4.776	4.882	-2,17%	62.002	59.848	3,60%	18,31%
GRAN BUENOS AIRES	7.677	6.403	8.794	19,90%	-12,70%	50.694	45.165	12,24%	270	290	325	-6,90%	-16,92%	1.811	2.065	-12,30%	52.505	47.230	11,17%	15,51%
BUENOS AIRES	7.165	6.200	8.435	15,56%	-15,06%	48.973	43.557	12,43%	395	370	457	6,76%	-13,57%	2.667	2.406	10,85%	51.640	45.963	12,35%	15,25%
CORDOBA	4.749	3.835	5.559	23,83%	-14,57%	34.205	27.806	23,01%	275	252	314	9,13%	-12,42%	1.974	1.602	23,22%	36.179	29.408	23,02%	10,68%
SANTA FE	3.949	3.672	4.803	7,54%	-17,78%	29.188	25.227	15,70%	264	261	327	1,15%	-19,27%	2.050	1.656	23,79%	31.238	26.883	16,20%	9,22%
MENDOZA	1.755	1.389	1.939	26,35%	-9,49%	11.652	9.947	17,14%	95	157	137	-39,49%	-30,66%	851	879	-3,19%	12.503	10.826	15,49%	3,69%
ENTRE RIOS	1.076	902	1.247	19,29%	-13,71%	7.809	6.873	13,62%	96	74	97	29,73%	-1,03%	654	597	9,55%	8.463	7.470	13,29%	2,50%
CHUBUT	1.065	891	1.288	19,53%	-17,31%	7.610	6.707	13,46%	79	70	144	12,86%	-45,14%	631	583	8,23%	8.241	7.290	13,05%	2,43%
NEUQUEN	1.108	830	1.310	33,49%	-15,42%	7.607	6.051	25,71%	94	82	86	14,63%	9,30%	460	469	-1,92%	8.067	6.520	23,73%	2,38%
SALTA	838	699	1.038	19,89%	-19,27%	6.439	5.605	14,88%	115	110	85	4,55%	35,29%	588	555	5,95%	7.027	6.160	14,07%	2,08%
TUCUMAN	814	721	1.013	12,90%	-19,64%	6.290	5.545	13,44%	77	69	105	11,59%	-26,67%	452	410	10,24%	6.742	5.955	13,22%	1,99%
CORRIENTES	785	615	846	27,64%	-7,21%	5.785	4.824	19,92%	102	104	121	-1,92%	-15,70%	734	543	35,17%	6.519	5.367	21,46%	1,93%
CHACO	787	592	925	32,94%	-14,92%	5.753	4.291	34,07%	74	62	85	19,35%	-12,94%	499	415	20,24%	6.252	4.706	32,85%	1,85%
SANTA CRUZ	808	611	766	32,24%	5,48%	5.034	4.245	18,59%	30	55	50	-45,45%	-40,00%	264	306	-13,73%	5.298	4.551	16,41%	1,56%
RIO NEGRO	711	657	817	8,22%	-12,97%	4.748	4.431	7,15%	17	25	25	-32,00%	-32,00%	153	159	-3,77%	4.901	4.590	6,78%	1,45%
MISIONES	550	496	604	10,89%	-8,94%	4.090	3.952	3,49%	36	24	41	50,00%	-12,20%	219	220	-0,45%	4.309	4.172	3,28%	1,27%
LA PAMPA	513	380	655	35,00%	-21,68%	3.878	3.181	21,91%	16	18	27	-11,11%	-40,74%	163	164	-0,61%	4.041	3.345	20,81%	1,19%
JUJUY	461	370	504	24,59%	-8,53%	3.362	2.890	16,33%	72	67	79	7,46%	-8,86%	494	528	-6,44%	3.856	3.418	12,81%	1,14%
TIERRA DEL FUEGO	528	432	561	22,22%	-5,88%	3.457	3.151	9,71%	38	48	42	-20,83%	-9,52%	197	212	-7,08%	3.654	3.363	8,65%	1,08%
SAN JUAN	389	328	509	18,60%	-23,58%	3.114	2.575	20,93%	45	31	35	45,16%	28,57%	254	203	25,12%	3.368	2.778	21,24%	0,99%
SANTIAGO DEL ESTERO	369	277	470	33,21%	-21,49%	3.025	2.469	22,52%	22	31	34	-29,03%	-35,29%	173	156	10,90%	3.198	2.625	21,83%	0,94%
SAN LUIS	337	282	374	19,50%	-9,89%	2.339	2.015	16,08%	23	21	7	9,52%	228,57%	78	86	-9,30%	2.417	2.101	15,04%	0,71%
FORMOSA	290	226	326	28,32%	-11,04%	2.281	1.854	23,03%	8	14	21	-42,86%	-61,90%	114	130	-12,31%	2.395	1.984	20,72%	0,71%
CATAMARCA	284	264	322	7,58%	-11,80%	2.257	1.766	27,80%	11	10	8	10,00%	37,50%	64	58	10,34%	2.321	1.824	27,25%	0,69%
LA RIOJA	193	193	238	0,00%	-18,91%	1.444	1.396	3,44%	4	3	7	33,33%	-42,86%	44	38	15,79%	1.488	1.434	3,77%	0,44%



Patentamientos por Provincias y Tipos -





Patentamientos por Regiones de Buenos Aires

Subregion	Automovil+Comercial Liviano								Comercial Pesado+Otros Pesados								Mercado Total		
	jun/08 (a)	jun/07 (b)	may/08 (c)	Var a-b	Var a-c	Ac. 08	Ac. 07	Var 08-07	jun/08 (a)	jun/07 (b)	may/08 (c)	Var a-b	Var a-c	Ac. 08	Ac. 07	Var 08-07	Ac. 08	Ac. 07	Var 08-07
GRAN BUENOS AIRES-OESTE	3.073	2.476	3.488	24,11%	-11,90%	20.465	18.104	13,04%	121	137	124	-11,68%	-2,42%	785	820	-4,27%	21.250	18.924	12,29%
GRAN BUENOS AIRES-SUR	2.712	2.324	3.059	16,70%	-11,34%	18.051	16.132	11,90%	107	111	136	-3,60%	-21,32%	716	871	-17,80%	18.767	17.003	10,37%
GRAN BUENOS AIRES-NORTE	1.892	1.603	2.247	18,03%	-15,80%	12.178	10.929	11,43%	42	42	65	0,00%	-35,38%	310	374	-17,11%	12.488	11.303	10,48%
BUENOS AIRES-NORTE	1.499	1.351	1.779	10,95%	-15,74%	10.355	9.089	13,93%	86	84	93	2,38%	-7,53%	614	522	17,62%	10.969	9.611	14,13%
BUENOS AIRES-ATLANTICA	1.423	1.195	1.693	19,08%	-15,95%	9.704	8.484	14,38%	60	34	46	76,47%	30,43%	323	275	17,45%	10.027	8.759	14,48%
BUENOS AIRES-OESTE	1.057	995	1.375	6,23%	-23,13%	8.004	7.229	10,72%	102	121	135	-15,70%	-24,44%	774	724	6,91%	8.778	7.953	10,37%
BUENOS AIRES-LA PLATA	1.222	1.109	1.401	10,19%	-12,78%	8.196	8.025	2,13%	21	17	31	23,53%	-32,26%	139	141	-1,42%	8.335	8.166	2,07%
BUENOS AIRES-SUR	1.009	803	1.195	25,65%	-15,56%	6.657	5.376	23,83%	58	52	84	11,54%	-30,95%	396	316	25,32%	7.053	5.692	23,91%
BUENOS AIRES-CENTRO	955	747	992	27,84%	-3,73%	6.057	5.354	13,13%	68	62	68	9,68%	0,00%	421	428	-1,64%	6.478	5.782	12,04%



Patentamientos por Regiones de Buenos Aires

