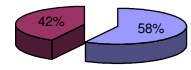




Patentamientos por Marcas - Mercado Total

	abr/08(a)	mar/08(b)	abr/07(c)	abr/06(d)	Var a-b	Var a-c	Var a-d	Ac. 08	Ac. 07	Var 08-07
Automovil	41.847	32.595	31.343	25.406	28,38%	33,51%	64,71%	174.669	159.512	9,50%
Comercial Liviano	10.515	8.736	7.589	6.544	20,36%	38,56%	60,68%	44.242	37.865	16,84%
Comercial Pesado	2.207	1.748	1.653	1.471	26,26%	33,51%	50,03%	8.409	7.686	9,41%
Otros Pesados	1.583	1.199	1.052	842	32,03%	50,48%	88,00%	5.403	5.368	0,65%
Total	56.152	44.278	41.637	34.263	26,82%	34,86%	63,89%	232.723	210.431	10,59%
Prom. diario	2.674	2.460	2.313	1.904				2.838	2.566	
Dias habiles	21	18	18	18				82	82	

Patentamientos por origen		
	Abr-08	Ac. 08
Importados	33.745	134.442
Nacionales	22.407	98.210



Importados Nacionales

Patentamientos Mensuales												
	ene	feb	mar	abr	may	jun	jul	ago	sep	oct	nov	dic
2008	85.813	46.480	44.278	56.152								
2007	82.562	38.847	47.385	41.637	47.235	42.145	50.197	54.288	48.859	49.505	40.642	24.538
Var% 08-07	3,94%	19,65%	-6,56%	34,86%	-100,00%	-100,00%	-100,00%	-100,00%	-100,00%	-100,00%	-100,00%	-100,00%
2006	65.992	32.436	40.418	34.273	38.298	36.581	36.966	39.131	39.655	36.025	33.283	17.750
2005	52.439	26.340	30.580	32.955	33.460	32.579	34.182	31.919	36.151	30.591	29.390	15.980

Patentamientos por Marcas - Totales													2008	2008	2007	2007	Var
Marca	abr/08(a)	Part %	abr/07(c)	Part %	mar/08(e)	Part %	Var a-c	Var a-e	ene - abr	Part %	ene - abr	Part %	2008-2007				
Volkswagen	9.964	18,27%	8.326	20,49%	7.875	18,29%	19,67%	26,53%	38.453	16,93%	41.407	20,11%	-7,13%				
Chevrolet	8.103	14,86%	6.399	15,75%	6.211	14,42%	26,63%	30,46%	33.020	14,54%	30.410	14,77%	8,58%				
Ford	6.904	12,66%	4.998	12,30%	5.061	11,75%	38,14%	36,42%	28.902	12,72%	27.011	13,12%	7,00%				
Renault	6.103	11,19%	4.381	10,78%	5.587	12,98%	39,31%	9,24%	27.792	12,24%	26.399	12,82%	5,28%				
Fiat	6.354	11,65%	4.568	11,24%	4.879	11,33%	39,10%	30,23%	25.018	11,01%	20.727	10,07%	20,70%				
Peugeot	5.280	9,68%	4.276	10,53%	4.207	9,77%	23,48%	25,51%	23.661	10,42%	22.173	10,77%	6,71%				
Toyota	2.475	4,54%	2.120	5,22%	1.982	4,60%	16,75%	24,87%	11.055	4,87%	10.552	5,12%	4,77%				
Citroen	2.126	3,90%	1.405	3,46%	1.772	4,12%	51,32%	19,98%	10.150	4,47%	7.477	3,63%	35,75%				
Honda	1.799	3,30%	834	2,05%	1.117	2,59%	115,71%	61,06%	7.481	3,29%	3.144	1,53%	137,95%				
Mercedes Benz	1.369	2,51%	970	2,39%	1.128	2,62%	41,13%	21,37%	5.407	2,38%	4.843	2,35%	11,65%				
Suzuki	801	1,47%	725	1,78%	503	1,17%	10,48%	59,24%	2.753	1,21%	3.247	1,58%	-15,21%				
Nissan	576	1,06%	226	0,56%	463	1,08%	154,87%	24,41%	2.235	0,98%	1.125	0,55%	98,67%				
Iveco	481	0,88%	273	0,67%	332	0,77%	76,19%	44,88%	1.595	0,70%	1.246	0,61%	28,01%				
Hyundai	356	0,65%	116	0,29%	280	0,65%	149,25%	27,14%	1.493	0,66%	584	0,28%	155,65%				
Audi	244	0,45%	168	0,41%	273	0,63%	45,24%	-10,62%	1.353	0,60%	1.209	0,59%	11,91%				
BMW	236	0,43%	146	0,36%	211	0,49%	61,64%	11,85%	1.236	0,54%	994	0,48%	24,35%				
Kia	334	0,61%	134	0,33%	263	0,61%	149,25%	27,00%	1.155	0,51%	674	0,33%	71,36%				
Mitsubishi	186	0,34%	72	0,18%	112	0,26%	158,33%	66,07%	693	0,31%	460	0,22%	50,65%				
Jeep	157	0,29%	79	0,19%	125	0,29%	98,73%	25,60%	655	0,29%	356	0,17%	83,99%				
Scania	154	0,28%	124	0,31%	138	0,32%	24,19%	11,59%	607	0,27%	456	0,22%	33,11%				
Chrysler	133	0,24%	70	0,17%	126	0,29%	90,00%	5,56%	533	0,23%	369	0,18%	44,44%				
Volvo	125	0,23%	44	0,11%	110	0,26%	184,09%	13,64%	465	0,20%	237	0,12%	96,20%				
Dodge	69	0,13%	17	0,04%	101	0,23%	305,88%	-31,68%	395	0,17%	161	0,08%	145,34%				
Subaru	48	0,09%	23	0,06%	44	0,10%	108,70%	9,09%	211	0,09%	129	0,06%	63,57%				
Agrale	33	0,06%	48	0,12%	27	0,06%	-31,25%	22,22%	180	0,08%	149	0,07%	20,81%				
Mini	32	0,06%	38	0,09%	35	0,08%	-15,79%	-8,57%	178	0,08%	133	0,06%	33,83%				
Puma de Tat	31	0,06%	22	0,05%	30	0,07%	40,91%	3,33%	134	0,06%	66	0,03%	103,03%				
Seat	29	0,05%		0,00%	30	0,07%	N/D	-3,33%	123	0,05%		0,00%	N/D				
Porsche	18	0,03%	7	0,02%	13	0,03%	157,14%	38,46%	90	0,04%	53	0,03%	69,81%				
Land Rover	20	0,04%	7	0,02%	20	0,05%	185,71%	0,00%	88	0,04%	71	0,03%	23,94%				
Alfa Romeo	2	0,00%	5	0,01%	4	0,01%	-60,00%	-50,00%	22	0,01%	22	0,01%	0,00%				
Ferrari		0,00%		0,00%		0,00%	N/D	N/D	1	0,00%	2	0,00%	-50,00%				
Hummer		0,00%		0,00%		0,00%	N/D	N/D	1	0,00%	4	0,00%	-75,00%				
Jaguar		0,00%	1	0,00%		0,00%	-100,00%	N/D	1	0,00%	9	0,00%	-88,89%				
Lamborghini		0,00%		0,00%		0,00%	N/D	N/D	1	0,00%		0,00%	N/D				
Isuzu		0,00%	1	0,00%		0,00%	-100,00%	N/D		0,00%	9	0,00%	-100,00%				
Maserati		0,00%	2	0,00%		0,00%	-100,00%	N/D		0,00%	3	0,00%	-100,00%				
Total	54.542		40.625		43.059				227.137		205.911						

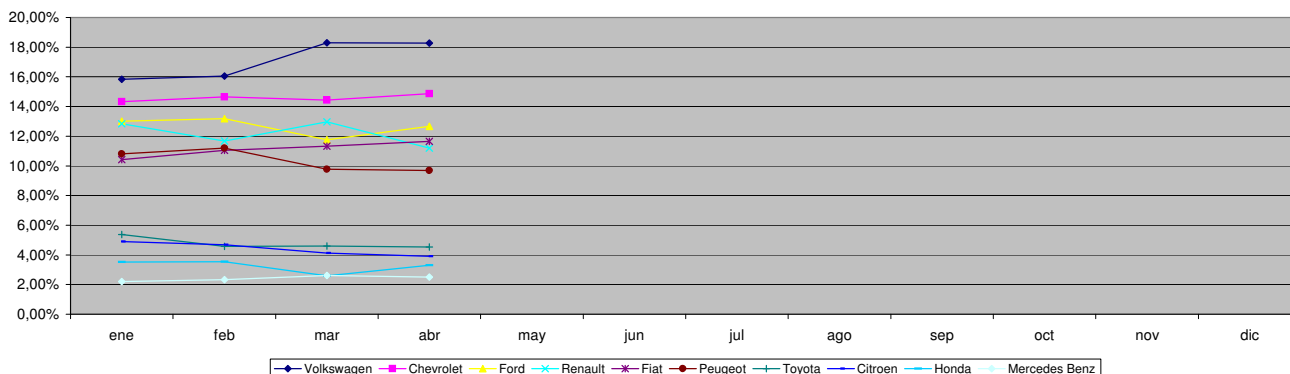


Patentamientos por Marcas - Mercado Total

Patentamientos por Marcas - Autos + Livianos								2008	2008	2007	2007	Var	
Marca	abr/08(a)	Part %	abr/07(c)	Part %	mar/08(e)	Part %	Var a-c	Var a-e	ene - abr	Part %	ene - abr	Part %	2008-2007
Volkswagen	9.689	18,50%	8.118	20,85%	7.624	18,45%	19,35%	27,09%	37.351	17,06%	40.325	20,43%	-7,38%
Chevrolet	8.103	15,48%	6.399	16,44%	6.211	15,03%	26,63%	30,46%	33.020	15,08%	30.410	15,41%	8,58%
Renault	6.037	11,53%	4.247	10,91%	5.541	13,41%	42,15%	8,95%	27.578	12,60%	25.143	12,74%	9,68%
Ford	6.445	12,31%	4.644	11,93%	4.673	11,31%	38,78%	37,92%	27.179	12,42%	25.281	12,81%	7,51%
Fiat	6.354	12,13%	4.568	11,73%	4.879	11,80%	39,10%	30,23%	25.018	11,43%	20.727	10,50%	20,70%
Peugeot	5.280	10,08%	4.276	10,98%	4.207	10,18%	23,48%	25,51%	23.661	10,81%	22.173	11,23%	6,71%
Toyota	2.475	4,73%	2.120	5,45%	1.982	4,80%	16,75%	24,87%	11.055	5,05%	10.552	5,35%	4,77%
Citroen	2.126	4,06%	1.405	3,61%	1.772	4,29%	51,32%	19,98%	10.150	4,64%	7.477	3,79%	35,75%
Honda	1.799	3,44%	834	2,14%	1.117	2,70%	115,71%	61,06%	7.481	3,42%	3.144	1,59%	137,95%
Suzuki	801	1,53%	725	1,86%	503	1,22%	10,48%	59,24%	2.753	1,26%	3.247	1,65%	-15,21%
Mercedes Benz	628	1,20%	345	0,89%	569	1,38%	82,03%	10,37%	2.546	1,16%	1.952	0,99%	30,43%
Nissan	576	1,10%	226	0,58%	463	1,12%	154,87%	24,41%	2.235	1,02%	1.125	0,57%	98,67%
Hyundai	328	0,63%	114	0,29%	274	0,66%	187,72%	19,71%	1.459	0,67%	559	0,28%	161,00%
Audi	244	0,47%	168	0,43%	273	0,66%	45,24%	-10,62%	1.353	0,62%	1.209	0,61%	11,91%
BMW	236	0,45%	146	0,38%	211	0,51%	61,64%	11,85%	1.236	0,56%	994	0,50%	24,35%
Kia	334	0,64%	134	0,34%	263	0,64%	149,25%	27,00%	1.155	0,53%	674	0,34%	71,36%
Mitsubishi	186	0,36%	72	0,18%	112	0,27%	158,33%	66,07%	693	0,32%	460	0,23%	50,65%
Jeep	157	0,30%	79	0,20%	125	0,30%	98,73%	25,60%	655	0,30%	356	0,18%	83,99%
Chrysler	133	0,25%	70	0,18%	126	0,30%	90,00%	5,56%	533	0,24%	369	0,19%	44,44%
Iveco	151	0,29%	114	0,29%	111	0,27%	32,46%	36,04%	485	0,22%	513	0,26%	-5,46%
Dodge	69	0,13%	17	0,04%	101	0,24%	305,88%	-31,68%	395	0,18%	161	0,08%	145,34%
Subaru	48	0,09%	23	0,06%	44	0,11%	108,70%	9,09%	211	0,10%	129	0,07%	63,57%
Volvo	61	0,12%	27	0,07%	47	0,11%	125,93%	29,79%	202	0,09%	91	0,05%	121,98%
Mini	32	0,06%	38	0,10%	35	0,08%	-15,79%	-8,57%	178	0,08%	133	0,07%	33,83%
Seat	29	0,06%		0,00%	30	0,07%	N/D	-3,33%	123	0,06%		0,00%	N/D
Porsche	18	0,03%	7	0,02%	13	0,03%	157,14%	38,46%	90	0,04%	53	0,03%	69,81%
Land Rover	20	0,04%	7	0,02%	20	0,05%	185,71%	0,00%	88	0,04%	71	0,04%	23,94%
Alfa Romeo	2	0,00%	5	0,01%	4	0,01%	-60,00%	-50,00%	22	0,01%	22	0,01%	0,00%
Ferrari		0,00%		0,00%		0,00%	N/D	N/D	1	0,00%	2	0,00%	-50,00%
Hummer		0,00%		0,00%		0,00%	N/D	N/D	1	0,00%	4	0,00%	-75,00%
Jaguar		0,00%	1	0,00%		0,00%	-100,00%	N/D	1	0,00%	9	0,00%	-88,89%
Lamborghini		0,00%		0,00%		0,00%	N/D	N/D	1	0,00%		0,00%	N/D
Isuzu		0,00%	1	0,00%		0,00%	-100,00%	N/D		0,00%	9	0,00%	-100,00%
Maserati		0,00%	2	0,01%		0,00%	-100,00%	N/D		0,00%	3	0,00%	-100,00%
Total	52.361		38.932		41.330				218.909		197.377		

Patentamientos por Marcas - Camiones + Buses								2008	2008	2007	2007	Var	
Marca	abr/08(a)	Part %	abr/07(c)	Part %	mar/08(e)	Part %	Var a-c	Var a-e	ene - abr	Part %	ene - abr	Part %	2008-2007
Mercedes Benz	741	33,98%	625	36,92%	559	32,33%	18,56%	32,56%	2.861	34,77%	2.891	33,88%	-1,04%
Ford	459	21,05%	354	20,91%	388	22,44%	29,66%	18,30%	1.723	20,94%	1.730	20,27%	-0,40%
Iveco	330	15,13%	159	9,39%	221	12,78%	107,55%	49,32%	1.110	13,49%	733	8,59%	51,43%
Volkswagen	275	12,61%	208	12,29%	251	14,52%	32,21%	9,56%	1.102	13,39%	1.082	12,68%	1,85%
Scania	154	7,06%	124	7,32%	138	7,98%	24,19%	11,59%	607	7,38%	456	5,34%	33,11%
Volvo	64	2,93%	17	1,00%	63	3,64%	276,47%	1,59%	263	3,20%	146	1,71%	80,14%
Renault	66	3,03%	134	7,91%	46	2,66%	-50,75%	43,48%	214	2,60%	1.256	14,72%	-82,96%
Agrale	33	1,51%	48	2,84%	27	1,56%	-31,25%	22,22%	180	2,19%	149	1,75%	20,81%
Puma de Tat	31	1,42%	22	1,30%	30	1,74%	40,91%	3,33%	134	1,63%	66	0,77%	103,03%
Hyundai	28	1,28%	2	0,12%	6	0,35%	1300,00%	366,67%	34	0,41%	25	0,29%	36,00%
Total	2.181		1.693		1.729				8.228		8.534		

Participacion por Marcas - Evolucion Mensual

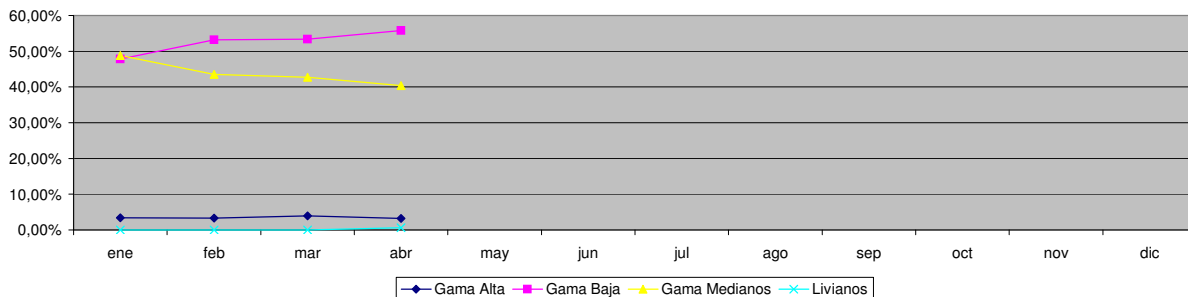




Patentamientos por Ranking de Automoviles - Mercado Total

Rank	Modelo	Ranking Por Modelos - Automoviles									
		abr/08 (a)	abr/07 (b)	mar/08 (c)	Var a-b	Var a-c	Ac. 08	Part %	Ac. 07	Part %	Var 08-07
1	Volkswagen GOL	4.012	3.673	3.162	9,23%	26,88%	14.177	8,12%	16.174	10,14%	-12,35%
2	Chevrolet CORSA	3.133	2.699	2.760	16,08%	13,51%	13.797	7,90%	12.353	7,74%	11,69%
3	Peugeot 206	2.685	1.980	2.192	35,61%	22,49%	11.502	6,59%	10.992	6,89%	4,64%
4	Peugeot 307	1.548	1.136	1.197	36,27%	29,32%	7.504	4,30%	6.357	3,99%	18,04%
5	Ford ECOSPORT	1.446	672	1.153	115,18%	25,41%	6.881	3,94%	5.492	3,44%	25,29%
6	Volkswagen SURAN	1.485	880	973	68,75%	52,62%	6.206	3,55%	6.036	3,78%	2,82%
7	Renault CLIO	1.694	1.487	748	13,92%	126,47%	5.758	3,30%	9.468	5,94%	-39,18%
8	Ford FIESTA	1.232	1.169	916	5,39%	34,50%	5.173	2,96%	5.520	3,46%	-6,29%
9	Fiat SIENA	1.485	926	1.097	60,37%	35,37%	5.133	2,94%	3.842	2,41%	33,60%
10	Renault MEGANE	760	846	856	-10,17%	-11,21%	5.088	2,91%	5.537	3,47%	-8,11%
11	Volkswagen FOX/CROSSFOX	1.241	937	1.098	32,44%	13,02%	5.017	2,87%	4.898	3,07%	2,43%
12	Fiat UNO	1.113	766	894	45,30%	24,50%	4.834	2,77%	4.210	2,64%	14,82%
13	Fiat PALIO	1.238	1.155	806	7,19%	53,60%	4.559	2,61%	5.170	3,24%	-11,82%
14	Ford FOCUS	883	716	811	23,32%	8,88%	4.266	2,44%	3.588	2,25%	18,90%
15	Chevrolet ASTRA	1.059	670	755	58,06%	40,26%	4.188	2,40%	3.539	2,22%	18,34%
16	Citroen C4	768	1	609	76700,00%	26,11%	4.093	2,34%	1	0,00%	409200,00%
17	Volkswagen BORA	898	564	710	59,22%	26,48%	4.007	2,29%	3.614	2,27%	10,87%
18	Chevrolet CORSA II	893	747	574	19,54%	55,57%	3.513	2,01%	3.617	2,27%	-2,88%
19	Renault KANGOO	517	382	611	35,34%	-15,38%	3.418	1,96%	1.186	0,74%	188,20%
20	Honda FIT	786	371	489	111,86%	60,74%	3.313	1,90%	1.426	0,89%	132,33%
21	Fiat PUNTO	766		645	N/D	18,76%	3.305	1,89%		0,00%	N/D
22	Chevrolet MERIVA	858	708	636	34,91%	34,91%	3.182	1,82%	3.432	2,15%	-7,28%
23	Ford KA	1.057	825	275	28,12%	284,36%	2.742	1,57%	3.695	2,32%	-25,79%
24	Citroen C3	544	656	455	-17,07%	19,56%	2.497	1,43%	3.560	2,23%	-29,86%
25	Honda CIVIC	485	287	401	68,99%	20,95%	2.306	1,32%	891	0,56%	158,81%
26	Renault MEGANE II	421	461	448	-8,68%	-6,03%	2.270	1,30%	2.534	1,59%	-10,42%
27	Volkswagen VENTO	501	481	343	4,16%	46,06%	2.227	1,27%	1.975	1,24%	12,76%
28	Renault LOGAN	574	6	615	9466,67%	-6,67%	2.120	1,21%	6	0,00%	35233,33%
29	Chevrolet CORSA SW	459	564	308	-18,62%	49,03%	2.008	1,15%	2.225	1,39%	-9,75%
30	Suzuki FUN	617	619	344	-0,32%	79,36%	1.945	1,11%	2.992	1,88%	-34,99%
31	Fiat PALIO WEEKEND	405	476	330	-14,92%	22,73%	1.944	1,11%	2.274	1,43%	-14,51%
32	Toyota COROLLA	370	608	218	-39,14%	69,72%	1.910	1,09%	2.550	1,60%	-25,10%
33	Fiat IDEA	421	416	343	1,20%	22,74%	1.893	1,08%	1.788	1,12%	5,87%
34	Renault SANDERO	528		654	N/D	-19,27%	1.740	1,00%		0,00%	N/D
35	Volkswagen POLO	286	381	205	-24,93%	39,51%	1.395	0,80%	1.696	1,06%	-17,75%
36	Chevrolet VECTRA	388	159	299	144,03%	29,77%	1.274	0,73%	977	0,61%	30,40%
37	Peugeot PARTNER	242	270	184	-10,37%	31,52%	1.233	0,71%	1.237	0,78%	-0,32%
38	Volkswagen GOL COUNTRY	389	415	365	-6,27%	6,58%	1.217	0,70%	2.246	1,41%	-45,81%
39	Citroen BERLINGO	280	203	226	37,93%	23,89%	1.179	0,67%	1.227	0,77%	-3,91%
40	Renault SCENIC	198	179	236	10,61%	-16,10%	1.040	0,60%	1.347	0,84%	-22,79%
41	Citroen PICASSO	217	204	196	6,37%	10,71%	985	0,56%	1.236	0,77%	-20,31%
42	Nissan TIIDA	240		191	N/D	25,65%	906	0,52%		0,00%	N/D
43	Chevrolet ZAFIRA	180	133	128	35,34%	40,63%	783	0,45%	692	0,43%	13,15%
44	Volkswagen GOLF	200	161	180	24,22%	11,11%	757	0,43%	842	0,53%	-10,10%
45	Audi A3	154	91	142	69,23%	8,45%	684	0,39%	602	0,38%	13,62%
46	Mercedes Benz CLASE C	171	72	174	137,50%	-1,72%	673	0,39%	399	0,25%	68,67%
47	BMW 300 SERIES	105	72	100	45,83%	5,00%	594	0,34%	517	0,32%	14,89%
48	Volkswagen PASSAT	138	123	132	12,20%	4,55%	546	0,31%	573	0,36%	-4,71%
49	Peugeot 206 SW	109	91	115	19,78%	-5,22%	502	0,29%	395	0,25%	27,09%
50	Chrysler PT CRUISER	114	50	109	128,00%	4,59%	455	0,26%	278	0,17%	63,67%
51	Otros	1.554	855	1.186	81,75%	31,03%	5.929	3,39%	4.306	2,70%	37,69%
Total		41.847	31.343	32.594			174.668	1	159.512		

Autos - Participacion por Segmento





Patentamientos por Ranking de Livianos y Pesados - Mercado Total

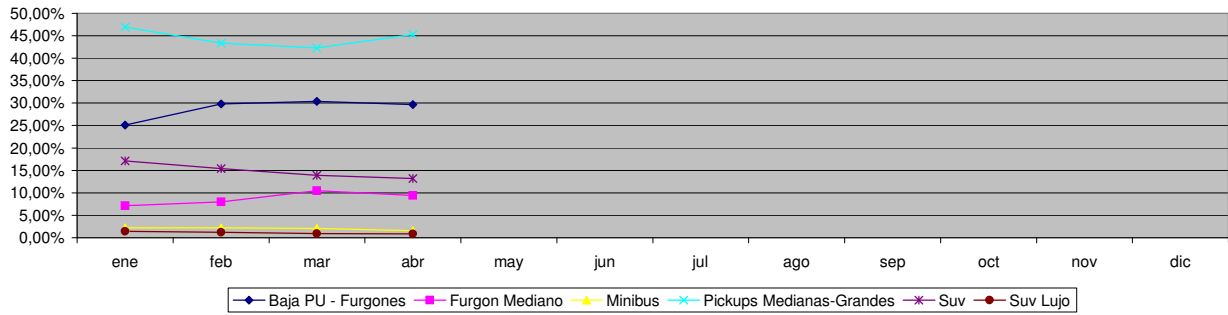
Comercial Liviano												
Rank.	Modelo	abr/08 (a)	abr/07 (b)	mar/08 (c)	Var a-b	Var a-c	Ac. 08	Part %	Ac. 07	Part %	Var 08-07	
1	Toyota HILUX	1.720	1.205	1.358	42,74%	26,66%	7.171	16,21%	6.488	17,13%	10,53%	
2	Ford RANGER	1.448	978	1.194	48,06%	21,27%	6.379	14,42%	5.656	14,94%	12,78%	
3	Renault KANGOO FURGON	1.017	679	930	49,78%	9,35%	4.476	10,12%	3.998	10,56%	11,96%	
4	Chevrolet S-10	898	677	620	32,64%	44,84%	3.555	8,04%	3.351	8,85%	6,09%	
5	Peugeot PARTNER FURGON	564	649	411	-13,10%	37,23%	2.386	5,39%	2.521	6,66%	-5,36%	
6	Fiat FIORINO	645	503	476	28,23%	35,50%	2.020	4,57%	1.825	4,82%	10,68%	
7	Honda CRV	208	95	202	118,95%	2,97%	1.469	3,32%	394	1,04%	272,84%	
8	Mercedes Benz SPRINTER	360	213	299	69,01%	20,40%	1.440	3,25%	1.195	3,16%	20,50%	
9	Citroen BERLINGO FURGON	276	305	258	-9,51%	6,98%	1.229	2,78%	1.277	3,37%	-3,76%	
10	Renault MASTER	225	142	319	58,45%	-29,47%	1.192	2,69%	760	2,01%	56,84%	
11	Volkswagen SAVEIRO	356	353	307	0,85%	15,96%	1.122	2,54%	1.603	4,23%	-30,01%	
12	Ford F 100	253	220	186	15,00%	36,02%	1.078	2,44%	976	2,58%	10,45%	
13	Toyota HILUX SW4	231	179	204	29,05%	13,24%	1.052	2,38%	864	2,28%	21,76%	
14	Nissan FRONTIER	250	136	164	83,82%	52,44%	841	1,90%	701	1,85%	19,97%	
15	Hyundai TUCSON	136	29	111	368,97%	22,52%	522	1,18%	119	0,31%	338,66%	
16	Fiat DUCATO	120	54	98	122,22%	22,45%	492	1,11%	294	0,78%	67,35%	
17	Iveco DAILY	151	114	110	32,46%	37,27%	471	1,06%	513	1,35%	-8,19%	
18	Fiat STRADA	70	123	90	-43,09%	-22,22%	470	1,06%	608	1,61%	-22,70%	
19	Mitsubishi L200	127	51	70	149,02%	81,43%	469	1,06%	325	0,86%	44,31%	
20	Hyundai SANTA FE	48	29	66	65,52%	-27,27%	401	0,91%	149	0,39%	169,13%	
21	Otros	1.411	855	1.263	65,03%	11,72%	6.006	13,58%	4.248	11,22%	41,38%	
Total		10.514	7.589	8.736			44.241	1	37.865			

Comercial Pesado												
Rank.	Modelo	abr/08 (a)	abr/07 (b)	mar/08 (c)	Var a-b	Var a-c	Ac. 08	Part %	Ac. 07	Part %	Var 08-07	
1	Ford CARGO 1722 E	172	10	139	1620,00%	23,74%	657	7,98%	10	0,13%	6470,00%	
2	Mercedes Benz LS 1634	121	128	122	-5,47%	-0,82%	519	6,31%	601	8,05%	-13,64%	
3	Mercedes Benz L-1624	93	70	88	32,86%	5,68%	400	4,86%	109	1,46%	266,97%	
4	Iveco 170 E	124	63	69	96,83%	79,71%	394	4,79%	246	3,29%	60,16%	
5	Mercedes Benz OF 1418	74	68	84	8,82%	-11,90%	365	4,44%	230	3,08%	58,70%	
6	Ford F-4000	99	50	76	98,00%	30,26%	357	4,34%	268	3,59%	33,21%	
7	Volkswagen 17220	80	69	88	15,94%	-9,09%	333	4,05%	339	4,54%	-1,77%	
8	Iveco 450 E	74	61	62	21,31%	19,35%	330	4,01%	295	3,95%	11,86%	
9	Ford CARGO 1832 E	68	9	64	655,56%	6,25%	294	3,57%	9	0,12%	3166,67%	
10	Mercedes Benz 1315	49	54	21	-9,26%	133,33%	234	2,84%	230	3,08%	1,74%	
11	Mercedes Benz 710	72	51	27	41,18%	166,67%	233	2,83%	208	2,79%	12,02%	
12	Volkswagen 13180	49	31	41	58,06%	19,51%	215	2,61%	203	2,72%	5,91%	
13	Mercedes Benz ATEGO 1725	70		42	N/D	66,67%	211	2,56%		0,00%	N/D	
14	Mercedes Benz L1634	45	63	49	-28,57%	-8,16%	199	2,42%	276	3,70%	-27,90%	
15	Volkswagen 19320	45	1	28	4400,00%	60,71%	164	1,99%	1	0,01%	16300,00%	
16	Volkswagen 17250 E	46		45	N/D	2,22%	156	1,90%		0,00%	N/D	
17	Mercedes Benz O-500	34	27	22	25,93%	54,55%	154	1,87%	135	1,81%	14,07%	
18	Renault PREMIUM	56	24	29	133,33%	93,10%	153	1,86%	102	1,37%	50,00%	
19	Iveco 490 S	43		33	N/D	30,30%	131	1,59%		0,00%	N/D	
20	Mercedes Benz AXOR 1933	49		25	N/D	96,00%	114	1,39%		0,00%	N/D	
21	Otros	718	822	575	-12,65%	24,87%	2.615	31,78%	4.204	56,31%	-37,80%	
Total		2.181	1.601	1.729			8.228	1	7.466			

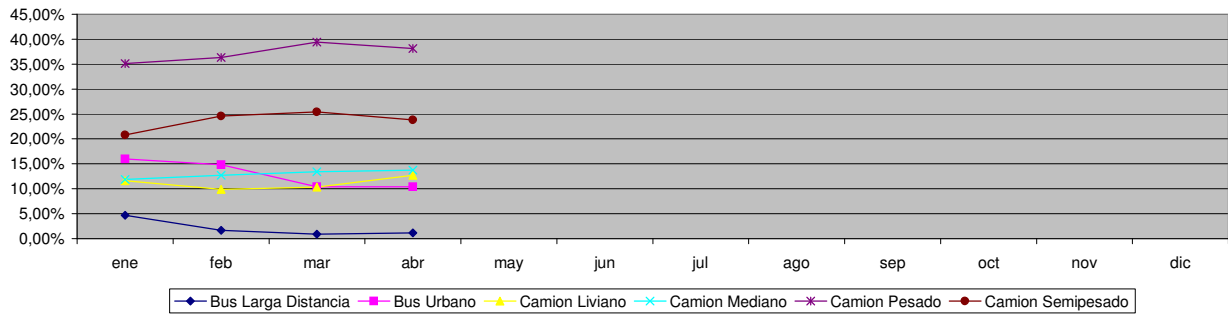


Patentamientos por Ranking de Livianos y Pesados - Mercado Total

Comercial Liviano



Comercial Pesado



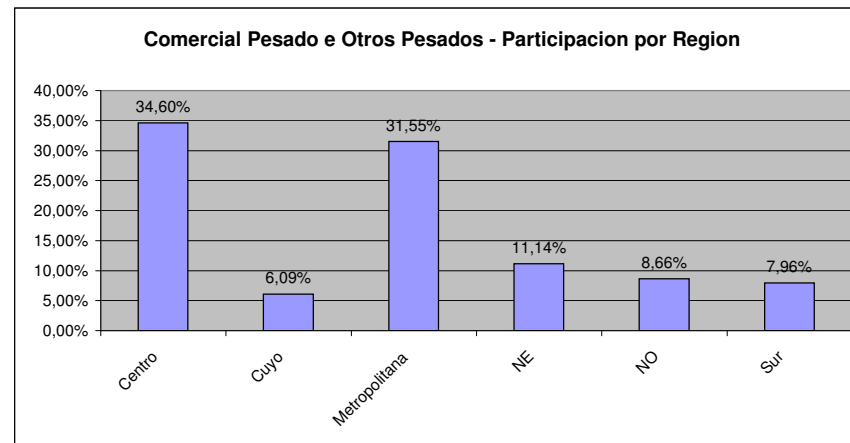
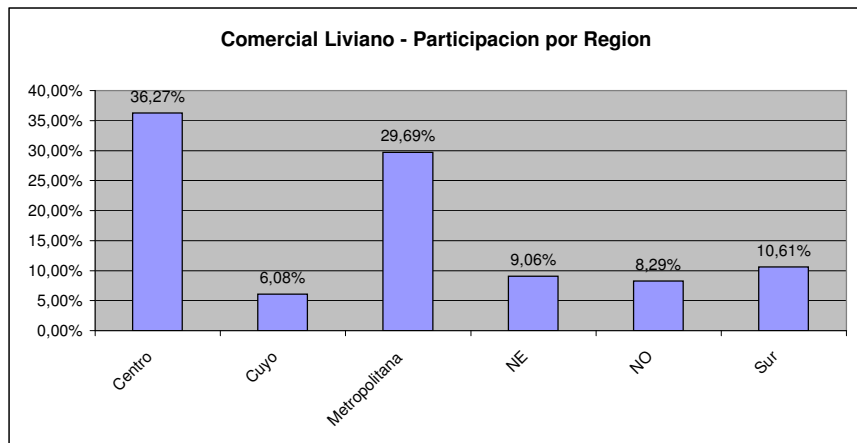
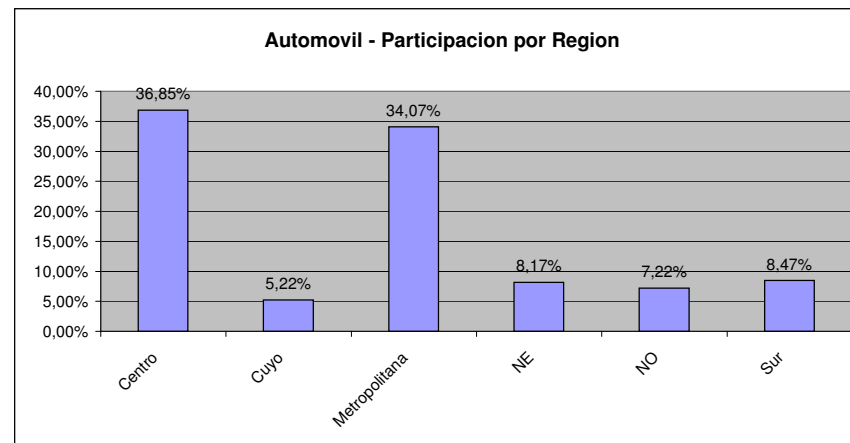
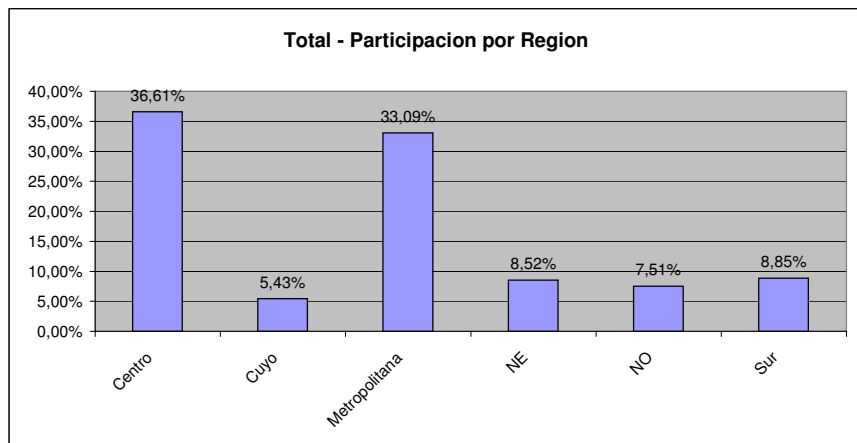


Patentamientos por Provincias y Tipos -

Distrito	Automovil+Comercial Liviano								Comercial Pesado+Otros Pesados								Mercado Total			
	abr/08 (a)	abr/07 (b)	mar/08 (c)	Var a-b	Var a-c	Ac. 08	Ac. 07	Var 08-07	abr/08 (a)	abr/07 (b)	mar/08 (c)	Var a-b	Var a-c	Ac. 08	Ac. 07	Var 08-07	Ac. 08	Ac. 07	Var 08-07	Part %
CAPITAL FEDERAL	10.167	8.074	7.676	25,92%	32,45%	38.421	38.412	0,02%	881	713	634	23,56%	38,96%	3.141	3.300	-4,82%	41.562	41.712	-0,36%	17,86%
GRAN BUENOS AIRES	8.895	6.603	6.665	34,71%	33,46%	34.223	31.844	7,47%	347	271	261	28,04%	32,95%	1.216	1.461	-16,77%	35.439	33.305	6,41%	15,23%
BUENOS AIRES	8.003	6.130	6.313	30,55%	26,77%	33.373	30.425	9,69%	481	290	420	65,86%	14,52%	1.815	1.614	12,45%	35.188	32.039	9,83%	15,12%
CORDOBA	5.342	3.818	4.239	39,92%	26,02%	23.897	19.642	21,66%	383	230	344	66,52%	11,34%	1.385	1.057	31,03%	25.282	20.699	22,14%	10,86%
SANTA FE	4.777	3.372	3.846	41,67%	24,21%	20.436	17.655	15,75%	406	220	324	84,55%	25,31%	1.459	1.124	29,80%	21.895	18.779	16,59%	9,41%
MENDOZA	1.792	1.400	1.418	28,00%	26,38%	7.958	6.939	14,69%	144	128	123	12,50%	17,07%	619	593	4,38%	8.577	7.532	13,87%	3,69%
ENTRE RIOS	1.208	919	1.012	31,45%	19,37%	5.486	4.910	11,73%	102	91	105	12,09%	-2,86%	461	424	8,73%	5.947	5.334	11,49%	2,56%
CHUBUT	1.157	853	1.086	35,64%	6,54%	5.257	4.720	11,38%	136	80	92	70,00%	47,83%	408	409	-0,24%	5.665	5.129	10,45%	2,43%
NEUQUEN	1.162	805	1.028	44,35%	13,04%	5.189	4.353	19,21%	72	46	41	56,52%	75,61%	280	311	-9,97%	5.469	4.664	17,26%	2,35%
SALTA	1.144	757	841	51,12%	36,03%	4.563	4.093	11,48%	120	97	81	23,71%	48,15%	388	341	13,78%	4.951	4.434	11,66%	2,13%
TUCUMAN	1.010	725	822	39,31%	22,87%	4.463	3.978	12,19%	79	68	59	16,18%	33,90%	270	254	6,30%	4.733	4.232	11,84%	2,03%
CORRIENTES	905	571	671	58,49%	34,87%	4.154	3.473	19,61%	152	81	94	87,65%	61,70%	511	356	43,54%	4.665	3.829	21,83%	2,00%
CHACO	857	495	701	73,13%	22,25%	4.041	3.012	34,16%	81	48	64	68,75%	26,56%	340	241	41,08%	4.381	3.253	34,68%	1,88%
SANTA CRUZ	738	523	709	41,11%	4,09%	3.460	2.882	20,06%	39	45	47	-13,33%	-17,02%	184	207	-11,11%	3.644	3.089	17,97%	1,57%
RIO NEGRO	730	627	627	16,43%	16,43%	3.220	3.054	5,44%	21	20	19	5,00%	10,53%	111	107	3,74%	3.331	3.161	5,38%	1,43%
MISIONES	599	483	461	24,02%	29,93%	2.936	2.877	2,05%	38	32	32	18,75%	18,75%	142	164	-13,41%	3.078	3.041	1,22%	1,32%
LA PAMPA	534	412	516	29,61%	3,49%	2.710	2.267	19,54%	33	16	19	106,25%	73,68%	120	124	-3,23%	2.830	2.391	18,36%	1,22%
JUJUY	528	411	395	28,47%	33,67%	2.397	2.083	15,07%	111	109	50	1,83%	122,00%	343	380	-9,74%	2.740	2.463	11,25%	1,18%
TIERRA DEL FUEGO	612	463	449	32,18%	36,30%	2.368	2.176	8,82%	33	29	23	13,79%	43,48%	117	133	-12,03%	2.485	2.309	7,62%	1,07%
SAN JUAN	502	350	426	43,43%	17,84%	2.216	1.882	17,75%	33	25	41	32,00%	-19,51%	174	128	35,94%	2.390	2.010	18,91%	1,03%
SANTIAGO DEL ESTERO	368	284	403	29,58%	-8,68%	2.186	1.763	23,99%	31	16	29	93,75%	6,90%	117	106	10,38%	2.303	1.869	23,22%	0,99%
FORMOSA	364	237	254	53,59%	43,31%	1.665	1.302	27,88%	30	18	26	66,67%	15,38%	85	107	-20,56%	1.750	1.409	24,20%	0,75%
CATAMARCA	353	233	322	51,50%	9,63%	1.651	1.237	33,47%	15	7	7	114,29%	114,29%	45	37	21,62%	1.696	1.274	33,12%	0,73%
SAN LUIS	406	221	268	83,71%	51,49%	1.628	1.416	14,97%	12	17	11	-29,41%	9,09%	48	45	6,67%	1.676	1.461	14,72%	0,72%
LA RIOJA	209	166	183	25,90%	14,21%	1.013	982	3,16%	10	8	1	25,00%	900,00%	33	31	6,45%	1.046	1.013	3,26%	0,45%



Patentamientos por Provincias y Tipos -





Patentamientos por Regiones de Buenos Aires

Subregion	Automovil+Comercial Liviano								Comercial Pesado+Otros Pesados								Mercado Total		
	abr/08 (a)	abr/07 (b)	mar/08 (c)	Var a-b	Var a-c	Ac. 08	Ac. 07	Var 08-07	abr/08 (a)	abr/07 (b)	mar/08 (c)	Var a-b	Var a-c	Ac. 08	Ac. 07	Var 08-07	Ac. 08	Ac. 07	Var 08-07
GRAN BUENOS AIRES-OESTE	3.501	2.580	2.683	35,70%	30,49%	13.904	12.792	8,69%	156	131	102	19,08%	52,94%	540	554	-2,53%	14.444	13.346	8,23%
GRAN BUENOS AIRES-SUR	3.165	2.402	2.400	31,77%	31,88%	12.280	11.437	7,37%	142	91	112	56,04%	26,79%	473	642	-26,32%	12.753	12.079	5,58%
GRAN BUENOS AIRES-NORTE	2.229	1.621	1.582	37,51%	40,90%	8.039	7.615	5,57%	49	49	47	0,00%	4,26%	203	265	-23,40%	8.242	7.880	4,59%
BUENOS AIRES-NORTE	1.612	1.217	1.338	32,46%	20,48%	7.077	6.411	10,39%	118	57	112	107,02%	5,36%	435	347	25,36%	7.512	6.758	11,16%
BUENOS AIRES-ATLANTICA	1.642	1.295	1.293	26,80%	26,99%	6.588	5.903	11,60%	59	25	57	136,00%	3,51%	217	180	20,56%	6.805	6.083	11,87%
BUENOS AIRES-OESTE	1.247	944	1.027	32,10%	21,42%	5.572	5.111	9,02%	145	97	122	49,48%	18,85%	537	466	15,24%	6.109	5.577	9,54%
BUENOS AIRES-LA PLATA	1.413	1.143	1.006	23,62%	40,46%	5.573	5.594	-0,38%	21	13	16	61,54%	31,25%	87	108	-19,44%	5.660	5.702	-0,74%
BUENOS AIRES-SUR	1.092	779	848	40,18%	28,77%	4.453	3.667	21,43%	64	42	61	52,38%	4,92%	254	205	23,90%	4.707	3.872	21,57%
BUENOS AIRES-CENTRO	997	752	801	32,58%	24,47%	4.110	3.739	9,92%	74	56	52	32,14%	42,31%	285	308	-7,47%	4.395	4.047	8,60%



Patentamientos por Regiones de Buenos Aires

