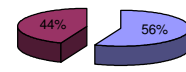




Patentamientos por Marcas - Mercado Total

	feb/08(a)	ene/08(b)	feb/07(c)	feb/06(d)	Var a-b	Var a-c	Var a-d	Ac. 08	Ac. 07	Var 08-07
Automovil	34.933	65.294	29.278	24.685	-46,50%	19,31%	41,52%	100.227	92.757	8,05%
Comercial Liviano	8.437	16.557	6.865	5.455	-49,04%	22,90%	54,67%	24.994	22.157	12,80%
Comercial Pesado	1.847	2.611	1.659	1.404	-29,26%	11,33%	31,55%	4.458	4.126	8,05%
Otros Pesados	1.264	1.357	1.045	893	-6,85%	20,96%	41,55%	2.621	2.370	10,59%
Total	46.481	85.819	38.847	32.437	-45,84%	19,65%	43,30%	132.300	121.410	8,97%
Prom. diario	2.213	3.901	1.942	1.622				3.077	2.891	
Dias habiles	21	22	20	20				43	42	

Patentamientos por origen	
	Feb-08 Ac. 08
Importados	26.436 74.191
Nacionales	20.045 58.109



■ Importados ■ Nacionales

Patentamientos Mensuales

	ene	feb	mar	abr	may	jun	jul	ago	sep	oct	nov	dic
2008	85.819	46.481										
2007	82.563	38.847	47.386	41.637	47.236	42.145	50.197	54.288	48.860	49.507	40.642	24.542
Var% 08-07	3,94%	19,65%	-100,00%	-100,00%	-100,00%	-100,00%	-100,00%	-100,00%	-100,00%	-100,00%	-100,00%	-100,00%
2006	65.995	32.439	40.420	34.273	38.305	36.582	36.968	39.132	39.656	36.027	33.285	17.754
2005	52.466	26.364	30.599	32.960	33.469	32.593	34.184	31.927	36.152	30.593	29.394	15.982

Patentamientos por Marcas - Totales

Marca	2008		2007		2007		2007		2007		Var 2008-2007		
	ene-feb	Part %	ene-feb	Part %	ene-feb	Part %	ene-feb	Part %	ene-feb	Part %			
Volkswagen	7.248	16,05%	8.086	21,36%	13.366	15,85%	-10,36%	-45,77%	20.614	15,92%	23.995	20,15%	-14,09%
Chevrolet	6.623	14,66%	5.433	14,35%	12.083	14,33%	21,90%	-45,19%	18.706	14,45%	16.857	14,16%	10,97%
Ford	5.960	13,19%	5.342	14,11%	10.977	13,02%	11,57%	-45,70%	16.937	13,08%	16.088	13,51%	5,28%
Renault	5.272	11,67%	3.653	9,65%	10.830	12,84%	44,32%	-51,32%	16.102	12,43%	16.816	14,12%	-4,25%
Peugeot	5.060	11,20%	4.031	10,65%	9.114	10,81%	25,53%	-44,48%	14.174	10,95%	12.456	10,46%	13,79%
Fiat	4.988	11,04%	4.451	11,76%	8.797	10,43%	12,06%	-43,30%	13.785	10,65%	11.830	9,93%	16,53%
Toyota	2.066	4,57%	1.713	4,52%	4.532	5,37%	20,61%	-54,41%	6.598	5,10%	6.160	5,17%	7,11%
Citroen	2.117	4,69%	1.391	3,67%	4.135	4,90%	52,19%	-48,80%	6.252	4,83%	4.246	3,57%	47,24%
Honda	1.599	3,54%	509	1,34%	2.966	3,52%	214,15%	-46,09%	4.565	3,53%	1.431	1,20%	219,01%
Mercedes Benz	1.053	2,33%	988	2,61%	1.857	2,20%	6,58%	-43,30%	2.910	2,25%	2.619	2,20%	11,11%
Suzuki	559	1,24%	622	1,64%	890	1,06%	-10,13%	-37,19%	1.449	1,12%	1.724	1,45%	-15,95%
Nissan	470	1,04%	242	0,64%	726	0,86%	94,21%	-35,26%	1.196	0,92%	661	0,56%	80,94%
Hyundai	281	0,62%	133	0,35%	576	0,68%	111,28%	-51,22%	857	0,66%	336	0,28%	155,06%
Audi	297	0,66%	229	0,60%	539	0,64%	29,69%	-44,90%	836	0,65%	772	0,65%	8,29%
BMW	256	0,57%	145	0,38%	533	0,63%	76,55%	-51,97%	789	0,61%	600	0,50%	31,50%
Iveco	342	0,76%	271	0,72%	440	0,52%	26,20%	-22,27%	782	0,60%	676	0,57%	15,68%
Kia	168	0,37%	121	0,32%	390	0,46%	38,84%	-56,92%	558	0,43%	372	0,31%	50,00%
Mitsubishi	149	0,33%	76	0,20%	246	0,29%	96,05%	-39,43%	395	0,31%	277	0,23%	42,60%
Jeep	120	0,27%	74	0,20%	253	0,30%	62,16%	-52,57%	373	0,29%	178	0,15%	109,55%
Scania	113	0,25%	87	0,23%	201	0,24%	29,89%	-43,78%	314	0,24%	224	0,19%	40,18%
Chrysler	72	0,16%	69	0,18%	202	0,24%	4,35%	-64,36%	274	0,21%	213	0,18%	28,64%
Dodge	69	0,15%	49	0,13%	156	0,19%	40,82%	-55,77%	225	0,17%	114	0,10%	97,37%
Volvo	83	0,18%	35	0,09%	110	0,13%	137,14%	-24,55%	193	0,15%	97	0,08%	98,97%
Subaru	50	0,11%	22	0,06%	69	0,08%	127,27%	-27,54%	119	0,09%	70	0,06%	70,00%
Agrale	45	0,10%	25	0,07%	68	0,08%	80,00%	-33,82%	113	0,09%	69	0,06%	63,77%
Mini	33	0,07%	12	0,03%	78	0,09%	175,00%	-57,69%	111	0,09%	62	0,05%	79,03%
Puma de Tat	14	0,03%	11	0,03%	59	0,07%	27,27%	-76,27%	73	0,06%	28	0,02%	160,71%
Seat	29	0,06%		0,00%	35	0,04%	N/D	-17,14%	64	0,05%		0,00%	N/D
Porsche	11	0,02%	6	0,02%	48	0,06%	83,33%	-77,08%	59	0,05%	33	0,03%	78,79%
Land Rover	17	0,04%	16	0,04%	31	0,04%	6,25%	-45,16%	48	0,04%	47	0,04%	2,13%
Alfa Romeo	7	0,02%	5	0,01%	9	0,01%	40,00%	-22,22%	16	0,01%	13	0,01%	23,08%
Ferrari		0,00%		0,00%	1	0,00%	N/D	-100,00%	1	0,00%	1	0,00%	0,00%
Hummer		0,00%	1	0,00%	1	0,00%	-100,00%	-100,00%	1	0,00%	3	0,00%	-66,67%
Jaguar		0,00%	5	0,01%	1	0,00%	-100,00%	-100,00%	1	0,00%	7	0,01%	-85,71%
Lamborghini		0,00%		0,00%	1	0,00%	N/D	-100,00%	1	0,00%		0,00%	N/D
Isuzu		0,00%	4	0,01%		0,00%	-100,00%	N/D		0,00%	8	0,01%	-100,00%
Maserati		0,00%	1	0,00%		0,00%	-100,00%	N/D		0,00%	1	0,00%	-100,00%
Total	45.171		37.858		84.320				129.491		119.084		

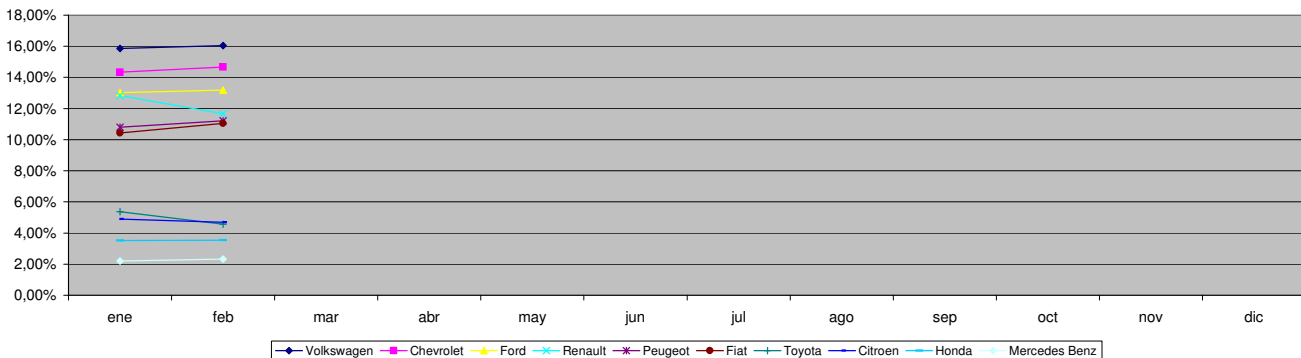


Patentamientos por Marcas - Mercado Total

Patentamientos por Marcas - Autos + Livianos								2008	2008	2007	2007	Var	
Marca	feb/08(a)	Part %	feb/07(c)	Part %	ene/08(e)	Part %	Var a-c	Var a-e	ene - feb	Part %	ene - feb	Part %	2008-2007
Volkswagen	6.988	16,11%	7.819	21,63%	13.050	15,94%	-10,63%	-46,45%	20.038	16,00%	23.400	20,36%	-14,37%
Chevrolet	6.623	15,27%	5.433	15,03%	12.083	14,76%	21,90%	-45,19%	18.706	14,94%	16.857	14,67%	10,97%
Ford	5.549	12,79%	4.937	13,66%	10.512	12,84%	12,40%	-47,21%	16.061	12,83%	15.131	13,17%	6,15%
Renault	5.231	12,06%	3.535	9,78%	10.769	13,16%	47,98%	-51,43%	16.000	12,78%	16.465	14,33%	-2,82%
Peugeot	5.060	11,67%	4.031	11,15%	9.114	11,14%	25,53%	-44,48%	14.174	11,32%	12.456	10,84%	13,79%
Fiat	4.988	11,50%	4.451	12,31%	8.797	10,75%	12,06%	-43,30%	13.785	11,01%	11.830	10,29%	16,53%
Toyota	2.066	4,76%	1.713	4,74%	4.532	5,54%	20,61%	-54,41%	6.598	5,27%	6.160	5,36%	7,11%
Citroen	2.117	4,88%	1.391	3,85%	4.135	5,05%	52,19%	-48,80%	6.252	4,99%	4.246	3,69%	47,24%
Honda	1.599	3,69%	509	1,41%	2.966	3,62%	214,15%	-46,09%	4.565	3,65%	1.431	1,25%	219,01%
Suzuki	559	1,29%	622	1,72%	890	1,09%	-10,13%	-37,19%	1.449	1,16%	1.724	1,50%	-15,95%
Mercedes Benz	422	0,97%	367	1,02%	927	1,13%	14,99%	-54,48%	1.349	1,08%	1.126	0,98%	19,80%
Nissan	470	1,08%	242	0,67%	726	0,89%	94,21%	-35,26%	1.196	0,96%	661	0,58%	80,94%
Hyundai	281	0,65%	129	0,36%	576	0,70%	117,83%	-51,22%	857	0,68%	323	0,28%	165,33%
Audi	297	0,68%	229	0,63%	539	0,66%	29,69%	-44,90%	836	0,67%	772	0,67%	8,29%
BMW	256	0,59%	145	0,40%	533	0,65%	76,55%	-51,97%	789	0,63%	600	0,52%	31,50%
Kia	168	0,39%	121	0,33%	390	0,48%	38,84%	-56,92%	558	0,45%	372	0,32%	50,00%
Mitsubishi	149	0,34%	76	0,21%	246	0,30%	96,05%	-39,43%	395	0,32%	277	0,24%	42,60%
Jeep	120	0,28%	74	0,20%	253	0,31%	62,16%	-52,57%	373	0,30%	178	0,15%	109,55%
Chrysler	72	0,17%	69	0,19%	202	0,25%	4,35%	-64,36%	274	0,22%	213	0,19%	28,64%
Dodge	69	0,16%	49	0,14%	156	0,19%	40,82%	-55,77%	225	0,18%	114	0,10%	97,37%
Iveco	96	0,22%	113	0,31%	127	0,16%	-15,04%	-24,41%	223	0,18%	290	0,25%	-23,10%
Subaru	50	0,12%	22	0,06%	69	0,08%	127,27%	-27,54%	119	0,10%	70	0,06%	70,00%
Mini	33	0,08%	12	0,03%	78	0,10%	175,00%	-57,69%	111	0,09%	62	0,05%	79,03%
Volvo	43	0,10%	16	0,04%	51	0,06%	168,75%	-15,69%	94	0,08%	42	0,04%	123,81%
Seat	29	0,07%		0,00%	35	0,04%	N/D	-17,14%	64	0,05%		0,00%	N/D
Porsche	11	0,03%	6	0,02%	48	0,06%	83,33%	-77,08%	59	0,05%	33	0,03%	78,79%
Land Rover	17	0,04%	16	0,04%	31	0,04%	6,25%	-45,16%	48	0,04%	47	0,04%	2,13%
Alfa Romeo	7	0,02%	5	0,01%	9	0,01%	40,00%	-22,22%	16	0,01%	13	0,01%	23,08%
Ferrari		0,00%		0,00%	1	0,00%	N/D	-100,00%	1	0,00%	1	0,00%	0,00%
Hummer		0,00%	1	0,00%	1	0,00%	-100,00%	-100,00%	1	0,00%	3	0,00%	-66,67%
Jaguar		0,00%	5	0,01%	1	0,00%	-100,00%	-100,00%	1	0,00%	7	0,01%	-85,71%
Lamborghini		0,00%		0,00%	1	0,00%	N/D	-100,00%	1	0,00%		0,00%	N/D
Isuzu		0,00%	4	0,01%		0,00%	-100,00%	N/D		0,00%	8	0,01%	-100,00%
Maserati		0,00%	1	0,00%		0,00%	-100,00%	N/D		0,00%	1	0,00%	-100,00%
Total	43.370		36.143		81.848				125.218		114.913		

Patentamientos por Marcas - Camiones + Buses								2008	2008	2007	2007	Var	
Marca	feb/08(a)	Part %	feb/07(c)	Part %	ene/08(e)	Part %	Var a-c	Var a-e	ene - feb	Part %	ene - feb	Part %	2008-2007
Mercedes Benz	631	35,04%	621	36,21%	930	37,62%	1,61%	-32,15%	1.561	36,53%	1.493	35,79%	4,55%
Ford	411	22,82%	405	23,62%	465	18,81%	1,48%	-11,61%	876	20,50%	957	22,94%	-8,46%
Volkswagen	260	14,44%	267	15,57%	316	12,78%	-2,62%	-17,72%	576	13,48%	595	14,27%	-3,19%
Iveco	246	13,66%	158	9,21%	313	12,66%	55,70%	-21,41%	559	13,08%	386	9,25%	44,82%
Scania	113	6,27%	87	5,07%	201	8,13%	29,89%	-43,78%	314	7,35%	224	5,37%	40,18%
Agrale	45	2,50%	25	1,46%	68	2,75%	80,00%	-33,82%	113	2,64%	69	1,65%	63,77%
Renault	41	2,28%	118	6,88%	61	2,47%	-65,25%	-32,79%	102	2,39%	351	8,42%	-70,94%
Volvo	40	2,22%	19	1,11%	59	2,39%	110,53%	-32,20%	99	2,32%	55	1,32%	80,00%
Puma de Tat	14	0,78%	11	0,64%	59	2,39%	27,27%	-76,27%	73	1,71%	28	0,67%	160,71%
Hyundai		0,00%	4	0,23%		0,00%	-100,00%	N/D		0,00%	13	0,31%	-100,00%
Total	1.801		1.715		2.472				4.273		4.171		

Participacion por Marcas - Evolucion Mensual

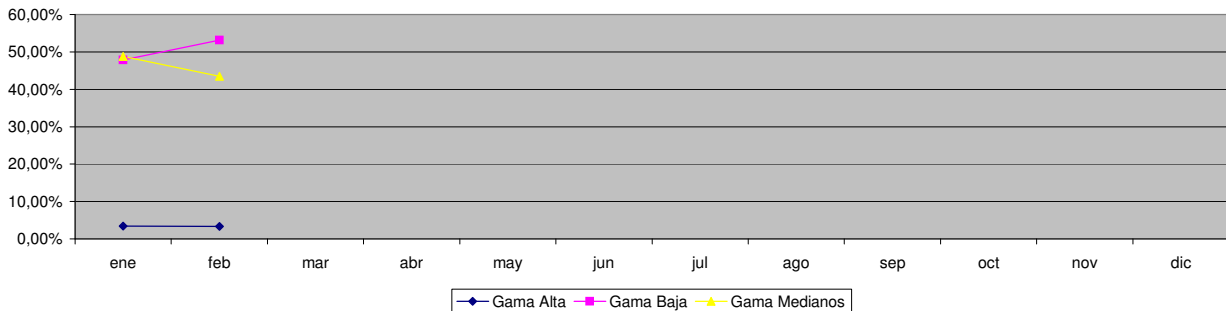




Patentamientos por Ranking de Automoviles - Mercado Total

Rank.	Modelo	Ranking Por Modelos - Automoviles									
		feb/08 (a)	feb/07 (b)	ene/08 (c)	Var a-b	Var a-c	Ac. 08	Part %	Ac. 07	Part %	Var 08-07
1	Chevrolet CORSA	3.355	2.453	4.549	36,77%	-26,25%	7.904	7,89%	6.521	7,03%	21,21%
2	Volkswagen GOL	2.842	2.945	4.161	-3,50%	-31,70%	7.003	6,99%	8.814	9,50%	-20,55%
3	Peugeot 206	2.373	2.010	4.252	18,06%	-44,19%	6.625	6,61%	6.226	6,71%	6,41%
4	Peugeot 307	1.629	1.152	3.130	41,41%	-47,96%	4.759	4,75%	3.753	4,05%	26,81%
5	Ford ECOSPORT	1.520	1.330	2.762	14,29%	-44,97%	4.282	4,27%	3.777	4,07%	13,37%
6	Volkswagen SURAN	1.049	1.385	2.699	-24,26%	-61,13%	3.748	3,74%	4.068	4,39%	-7,87%
7	Renault MEGANE	977	782	2.495	24,94%	-60,84%	3.472	3,46%	3.554	3,83%	-2,31%
8	Renault CLIO	940	1.172	2.376	-19,80%	-60,44%	3.316	3,31%	6.291	6,78%	-47,29%
9	Ford FIESTA	1.117	1.018	1.908	9,72%	-41,46%	3.025	3,02%	3.195	3,44%	-5,32%
10	Fiat UNO	1.138	1.102	1.689	3,27%	-32,62%	2.827	2,82%	2.610	2,81%	8,31%
11	Citroen C4	798		1.918	N/D	-58,39%	2.716	2,71%		0,00%	N/D
12	Volkswagen FOX/CROSSFOX	1.008	969	1.670	4,02%	-39,64%	2.678	2,67%	2.848	3,07%	-5,97%
13	Ford FOCUS	676	558	1.896	21,15%	-64,35%	2.572	2,57%	1.972	2,13%	30,43%
14	Fiat SIENA	932	762	1.619	22,31%	-42,43%	2.551	2,55%	2.292	2,47%	11,30%
15	Fiat PALIO	932	1.079	1.583	-13,62%	-41,12%	2.515	2,51%	2.951	3,18%	-14,77%
16	Volkswagen BORA	650	766	1.749	-15,14%	-62,84%	2.399	2,39%	2.285	2,46%	4,99%
17	Chevrolet ASTRA	684	618	1.690	10,68%	-59,53%	2.374	2,37%	2.177	2,35%	9,05%
18	Renault KANGOO	656	248	1.634	164,52%	-59,85%	2.290	2,28%	1.078	1,16%	112,43%
19	Chevrolet CORSA II	557	665	1.489	-16,24%	-62,59%	2.046	2,04%	2.029	2,19%	0,84%
20	Honda FIT	751	278	1.287	170,14%	-41,65%	2.038	2,03%	681	0,73%	199,27%
21	Fiat PUNTO	634		1.260	N/D	-49,68%	1.894	1,89%		0,00%	N/D
22	Chevrolet MERIVA	495	427	1.193	15,93%	-58,51%	1.688	1,68%	1.810	1,95%	-6,74%
23	Citroen C3	564	672	934	-16,07%	-39,61%	1.498	1,49%	1.928	2,08%	-22,30%
24	Honda CIVIC	539	120	881	349,17%	-38,82%	1.420	1,42%	292	0,31%	386,30%
25	Ford KA	540	628	870	-14,01%	-37,93%	1.410	1,41%	1.885	2,03%	-25,20%
26	Renault MEGANE II	435	432	966	0,69%	-54,97%	1.401	1,40%	1.565	1,69%	-10,48%
27	Volkswagen VENTO	378	360	1.005	5,00%	-62,39%	1.383	1,38%	1.070	1,15%	29,25%
28	Toyota COROLLA	518	429	804	20,75%	-35,57%	1.322	1,32%	1.355	1,46%	-2,44%
29	Chevrolet CORSA SW	512	411	729	24,57%	-29,77%	1.241	1,24%	1.116	1,20%	11,20%
30	Fiat PALIO WEEKEND	347	448	862	-22,54%	-59,74%	1.209	1,21%	1.356	1,46%	-10,84%
31	Fiat IDEA	389	314	740	23,89%	-47,43%	1.129	1,13%	833	0,90%	35,53%
32	Suzuki FUN	382	598	602	-36,12%	-36,54%	984	0,98%	1.628	1,76%	-39,56%
33	Renault LOGAN	259		672	N/D	-61,46%	931	0,93%		0,00%	N/D
34	Volkswagen POLO	284	201	620	41,29%	-54,19%	904	0,90%	920	0,99%	-1,74%
35	Peugeot PARTNER	276	195	531	41,54%	-48,02%	807	0,81%	733	0,79%	10,10%
36	Citroen BERLINGO	267	196	406	36,22%	-34,24%	673	0,67%	777	0,84%	-13,38%
37	Renault SCENIC	194	164	412	18,29%	-52,91%	606	0,60%	891	0,96%	-31,99%
38	Chevrolet VECTRA	189	167	398	13,17%	-52,51%	587	0,59%	633	0,68%	-7,27%
39	Citroen PICASSO	165	244	407	-32,38%	-59,46%	572	0,57%	767	0,83%	-25,42%
40	Renault SANDERO	484		74	N/D	554,05%	558	0,56%		0,00%	N/D
41	Chevrolet ZAFIRA	134	83	341	61,45%	-60,70%	475	0,47%	381	0,41%	24,67%
42	Nissan TIIDA	209		266	N/D	-21,43%	475	0,47%		0,00%	N/D
43	Volkswagen GOL COUNTRY	204	417	259	-51,08%	-21,24%	463	0,46%	1.298	1,40%	-64,33%
44	BMW 300 SERIES	130	85	259	52,94%	-49,81%	389	0,39%	293	0,32%	32,76%
45	Audi A3	141	113	247	24,78%	-42,91%	388	0,39%	373	0,40%	4,02%
46	Volkswagen GOLF	146	163	231	-10,43%	-36,80%	377	0,38%	470	0,51%	-19,79%
47	Mercedes Benz CLASE C	109	75	219	45,33%	-50,23%	328	0,33%	198	0,21%	65,66%
48	Audi A4	96	98	186	-2,04%	-48,39%	282	0,28%	320	0,34%	-11,88%
49	Peugeot 206 SW	123	83	155	48,19%	-20,65%	278	0,28%	187	0,20%	48,66%
50	Volkswagen PASSAT	115	143	161	-19,58%	-28,57%	276	0,28%	330	0,36%	-16,36%
51	Otros	1.091	720	2.048	51,53%	-46,73%	3.139	3,13%	2.226	2,40%	41,02%
Total		34.933	29.278	65.294			100.227	1	92.757		

Autos - Participacion por Segmento





Patentamientos por Ranking de Livianos y Pesados - Mercado Total

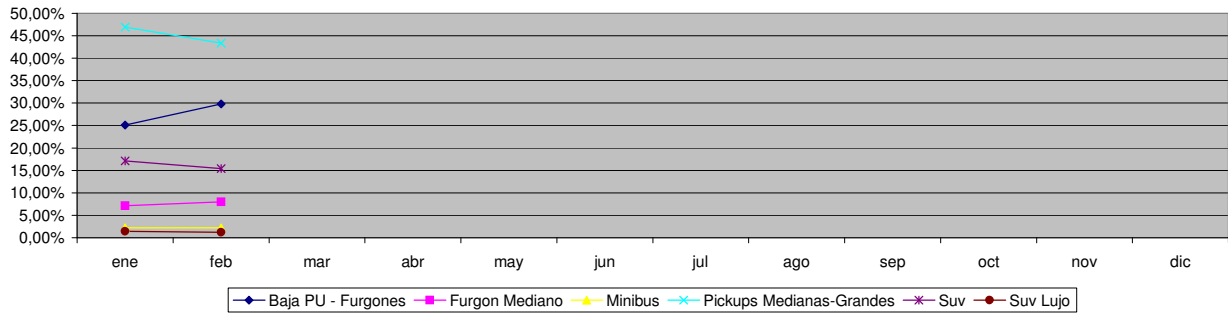
Comercial Liviano											
Rank.	Modelo	feb/08 (a)	feb/07 (b)	ene/08 (c)	Var a-b	Var a-c	Ac. 08	Part %	Ac. 07	Part %	Var 08-07
1	Toyota HILUX	1.175	1.043	2.918	12,66%	-59,73%	4.093	16,38%	3.928	17,73%	4,20%
2	Ford RANGER	1.343	1.152	2.394	16,58%	-43,90%	3.737	14,95%	3.529	15,93%	5,89%
3	Renault KANGOO FURGON	932	538	1.594	73,23%	-41,53%	2.526	10,11%	2.586	11,67%	-2,32%
4	Chevrolet S-10	582	572	1.455	1,75%	-60,00%	2.037	8,15%	2.056	9,28%	-0,92%
5	Peugeot PARTNER FURGON	551	461	860	19,52%	-35,93%	1.411	5,65%	1.215	5,48%	16,13%
6	Honda CRV	295	63	764	368,25%	-61,39%	1.059	4,24%	293	1,32%	261,43%
7	Fiat FIORINO	287	409	612	-29,83%	-53,10%	899	3,60%	905	4,08%	-0,66%
8	Mercedes Benz SPRINTER	249	231	532	7,79%	-53,20%	781	3,13%	707	3,19%	10,47%
9	Citroen BERLINGO FURGON	285	242	410	17,77%	-30,49%	695	2,78%	679	3,06%	2,36%
10	Renault MASTER	245	129	403	89,92%	-39,21%	648	2,59%	378	1,71%	71,43%
11	Ford F 100	232	174	407	33,33%	-43,00%	639	2,56%	558	2,52%	14,52%
12	Toyota HILUX SW4	183	124	434	47,58%	-57,83%	617	2,47%	507	2,29%	21,70%
13	Volkswagen SAVEIRO	183	333	276	-45,05%	-33,70%	459	1,84%	869	3,92%	-47,18%
14	Nissan FRONTIER	164	166	263	-1,20%	-37,64%	427	1,71%	425	1,92%	0,47%
15	Fiat STRADA	121	123	189	-1,63%	-35,98%	310	1,24%	351	1,58%	-11,68%
16	Hyundai SANTA FE	106	35	181	202,86%	-41,44%	287	1,15%	93	0,42%	208,60%
17	Hyundai TUCSON	75	24	200	212,50%	-62,50%	275	1,10%	62	0,28%	343,55%
18	Fiat DUCATO	129	78	145	65,38%	-11,03%	274	1,10%	152	0,69%	80,26%
19	Mitsubishi L200	91	57	181	59,65%	-49,72%	272	1,09%	199	0,90%	36,68%
20	Dodge RAM	69	49	156	40,82%	-55,77%	225	0,90%	114	0,51%	97,37%
21	Otros	1.140	862	2.180	32,25%	-47,71%	3.320	13,28%	2.550	11,51%	30,20%
Total		8.437	6.865	16.554			24.991	1	22.156		

Comercial Pesado											
Rank.	Modelo	feb/08 (a)	feb/07 (b)	ene/08 (c)	Var a-b	Var a-c	Ac. 08	Part %	Ac. 07	Part %	Var 08-07
1	Ford CARGO 1722 E	168		178	N/D	-5,62%	346	8,10%		0,00%	N/D
2	Mercedes Benz LS 1634	129	130	147	-0,77%	-12,24%	276	6,46%	315	8,00%	-12,38%
3	Mercedes Benz L-1624	90	2	129	4400,00%	-30,23%	219	5,13%	2	0,05%	10850,00%
4	Mercedes Benz OF 1418	88	32	119	175,00%	-26,05%	207	4,84%	42	1,07%	392,86%
5	Iveco 170 E	89	34	112	161,76%	-20,54%	201	4,70%	108	2,74%	86,11%
6	Iveco 450 E	80	54	114	48,15%	-29,82%	194	4,54%	160	4,07%	21,25%
7	Ford F-4000	77	65	105	18,46%	-26,67%	182	4,26%	135	3,43%	34,81%
8	Volkswagen 17220	94	77	71	22,08%	32,39%	165	3,86%	168	4,27%	-1,79%
9	Mercedes Benz 1315	76	67	88	13,43%	-13,64%	164	3,84%	128	3,25%	28,13%
10	Ford CARGO 1832 E	80		82	N/D	-2,44%	162	3,79%		0,00%	N/D
11	Mercedes Benz 710	46	33	88	39,39%	-47,73%	134	3,14%	103	2,62%	30,10%
12	Volkswagen 13180	57	56	68	1,79%	-16,18%	125	2,93%	127	3,23%	-1,57%
13	Mercedes Benz L1634	47	57	58	-17,54%	-18,97%	105	2,46%	138	3,51%	-23,91%
14	Mercedes Benz ATEGO 1725	41		58	N/D	-29,31%	99	2,32%		0,00%	N/D
15	Mercedes Benz O-500	24	37	74	-35,14%	-67,57%	98	2,29%	88	2,24%	11,36%
16	Scania R340	32	5	61	540,00%	-47,54%	93	2,18%	6	0,15%	1450,00%
17	Volkswagen 19320	29		62	N/D	-53,23%	91	2,13%		0,00%	N/D
18	Renault PREMIUM	25	28	43	-10,71%	-41,86%	68	1,59%	67	1,70%	1,49%
19	Agrale MT12	29	10	39	190,00%	-25,64%	68	1,59%	32	0,81%	112,50%
20	Mercedes Benz OF 1722	19	15	46	26,67%	-58,70%	65	1,52%	46	1,17%	41,30%
21	Otros	481	944	730	-49,05%	-34,11%	1.211	28,34%	2.271	57,70%	-46,68%
Total		1.801	1.646	2.472			4.273	1	3.936		

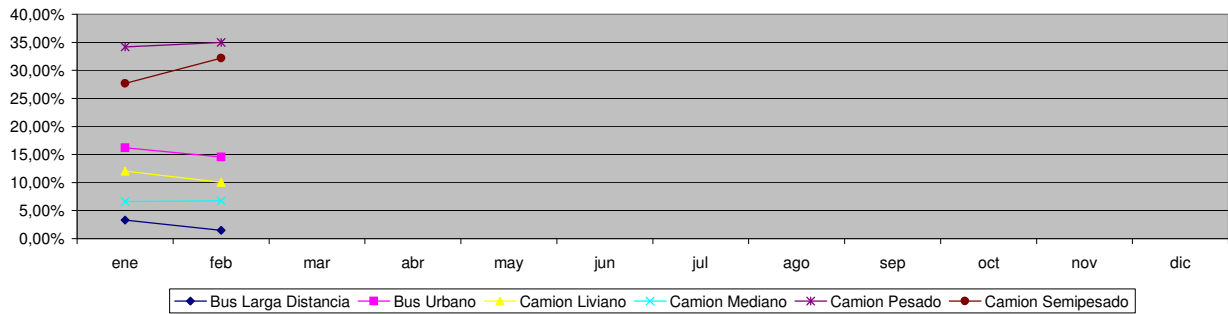


Patentamientos por Ranking de Livianos y Pesados - Mercado Total

Comercial Liviano



Comercial Pesado



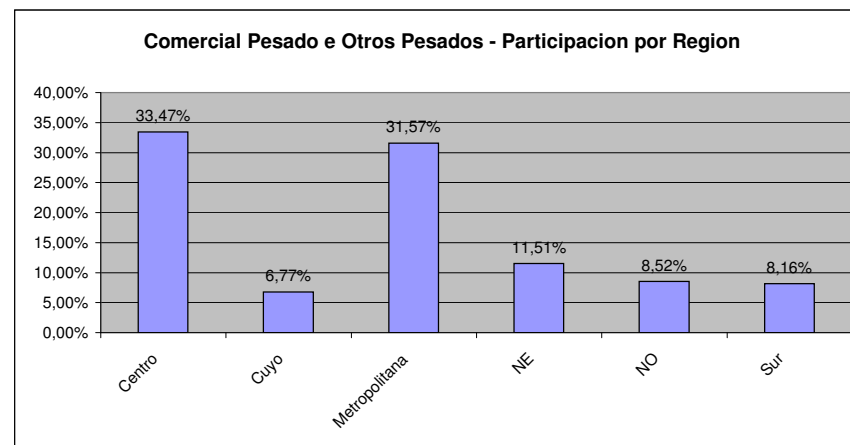
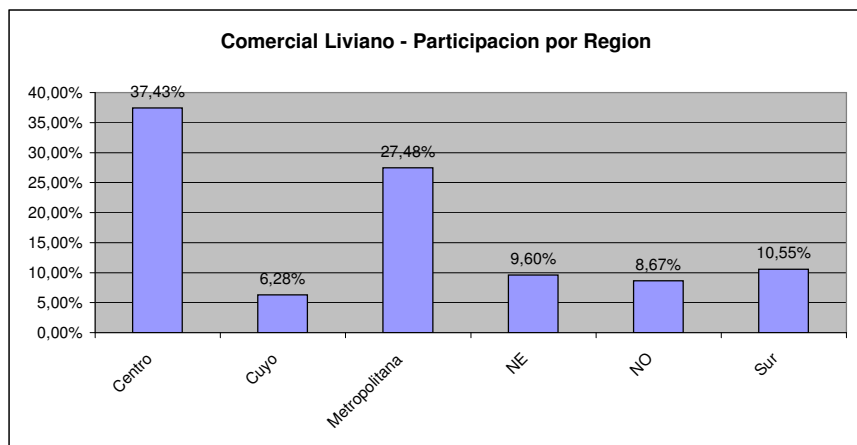
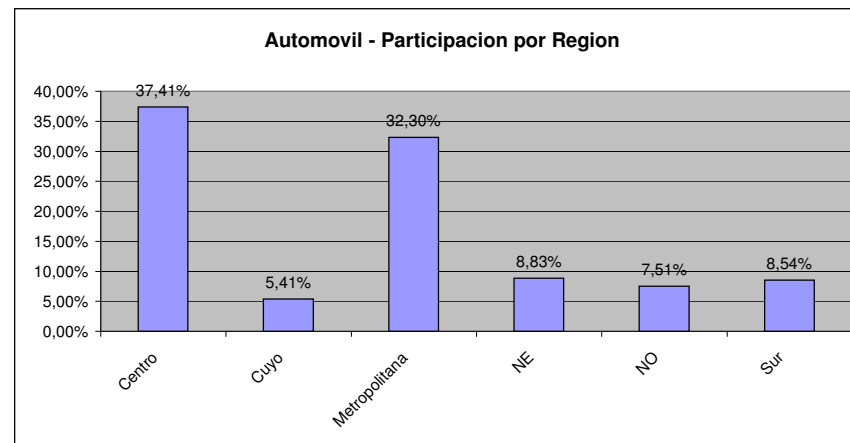
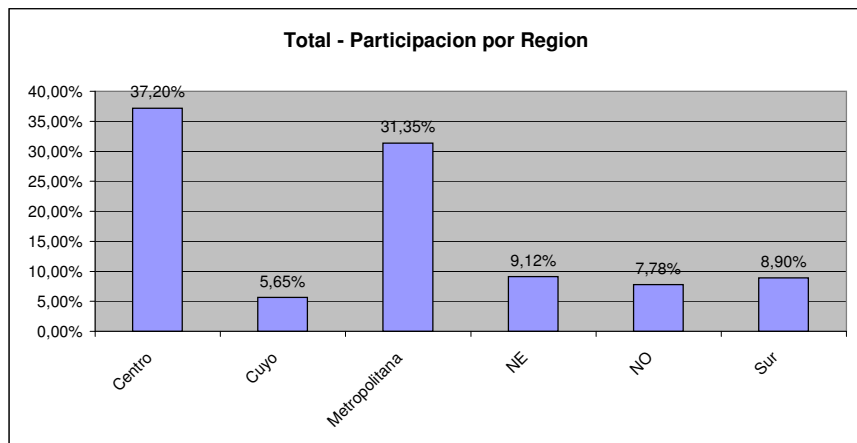


Patentamientos por Provincias y Tipos -

Distrito	Automovil+Comercial Liviano							Comercial Pesado+Otros Pesados							Mercado Total					
	feb/08 (a)	feb/07 (b)	ene/08 (c)	Var a-b	Var a-c	Ac. 08	Ac. 07	Var 08-07	feb/08 (a)	feb/07 (b)	ene/08 (c)	Var a-b	Var a-c	Ac. 08	Ac. 07	Var 08-07	Ac. 08	Ac. 07	Var 08-07	Part %
CAPITAL FEDERAL	7.734	7.395	12.846	4,58%	-39,79%	20.580	21.359	-3,65%	637	753	989	-15,41%	-35,59%	1.626	1.715	-5,19%	22.206	23.074	-3,76%	16,78%
BUENOS AIRES	6.734	5.515	12.323	22,10%	-45,35%	19.057	17.411	9,45%	414	305	500	35,74%	-17,20%	914	729	25,38%	19.971	18.140	10,09%	15,10%
GRAN BUENOS AIRES	6.796	5.914	11.867	14,91%	-42,73%	18.663	17.942	4,02%	252	270	357	-6,67%	-29,41%	609	700	-13,00%	19.272	18.642	3,38%	14,57%
CORDOBA	4.741	3.456	9.575	37,18%	-50,49%	14.316	11.788	21,45%	328	197	330	66,50%	-0,61%	658	477	37,95%	14.974	12.265	22,09%	11,32%
SANTA FE	4.043	3.219	7.770	25,60%	-47,97%	11.813	10.606	11,38%	327	248	402	31,85%	-18,66%	729	567	28,57%	12.542	11.173	12,25%	9,48%
MENDOZA	1.439	1.203	3.309	19,62%	-56,51%	4.748	4.138	14,74%	143	142	211	0,70%	-32,23%	354	313	13,10%	5.102	4.451	14,63%	3,86%
ENTRE RIOS	1.046	823	2.220	27,10%	-52,88%	3.266	2.960	10,34%	109	90	145	21,11%	-24,83%	254	208	22,12%	3.520	3.168	11,11%	2,66%
CHUBUT	1.088	868	1.926	25,35%	-43,51%	3.014	2.834	6,35%	93	70	87	32,86%	6,90%	180	188	-4,26%	3.194	3.022	5,69%	2,41%
NEUQUEN	1.094	852	1.905	28,40%	-42,57%	2.999	2.620	14,47%	82	69	86	18,84%	-4,65%	168	184	-8,70%	3.167	2.804	12,95%	2,39%
CORRIENTES	850	681	1.728	24,82%	-50,81%	2.578	2.193	17,56%	102	92	163	10,87%	-37,42%	265	196	35,20%	2.843	2.389	19,00%	2,15%
SALTA	795	719	1.783	10,57%	-55,41%	2.578	2.413	6,84%	81	54	106	50,00%	-23,58%	187	162	15,43%	2.765	2.575	7,38%	2,09%
TUCUMAN	790	631	1.841	25,20%	-57,09%	2.631	2.401	9,58%	85	44	47	93,18%	80,85%	132	102	29,41%	2.763	2.503	10,39%	2,09%
CHACO	868	545	1.615	59,27%	-46,25%	2.483	1.937	28,19%	86	58	109	48,28%	-21,10%	195	138	41,30%	2.678	2.075	29,06%	2,02%
SANTA CRUZ	780	585	1.234	33,33%	-36,79%	2.014	1.691	19,10%	58	54	40	7,41%	45,00%	98	110	-10,91%	2.112	1.801	17,27%	1,60%
MISIONES	522	463	1.354	12,74%	-61,45%	1.876	1.849	1,46%	33	36	39	-8,33%	-15,38%	72	88	-18,18%	1.948	1.937	0,57%	1,47%
RIO NEGRO	652	546	1.211	19,41%	-46,16%	1.863	1.709	9,01%	34	21	37	61,90%	-8,11%	71	62	14,52%	1.934	1.771	9,20%	1,46%
LA PAMPA	539	360	1.121	49,72%	-51,92%	1.660	1.382	20,12%	30	27	38	11,11%	-21,05%	68	64	6,25%	1.728	1.446	19,50%	1,31%
JUJUY	479	376	995	27,39%	-51,86%	1.474	1.245	18,39%	63	46	119	36,96%	-47,06%	182	191	-4,71%	1.656	1.436	15,32%	1,25%
SANTIAGO DEL ESTERO	401	333	1.014	20,42%	-60,45%	1.415	1.126	25,67%	21	29	36	-27,59%	-41,67%	57	61	-6,56%	1.472	1.187	24,01%	1,11%
SAN JUAN	359	322	929	11,49%	-61,36%	1.288	1.116	15,41%	44	36	56	22,22%	-21,43%	100	64	56,25%	1.388	1.180	17,63%	1,05%
TIERRA DEL FUEGO	505	402	802	25,62%	-37,03%	1.307	1.160	12,67%	36	29	25	24,14%	44,00%	61	51	19,61%	1.368	1.211	12,96%	1,03%
FORMOSA	310	250	737	24,00%	-57,94%	1.047	814	28,62%	18	9	11	100,00%	63,64%	29	75	-61,33%	1.076	889	21,03%	0,81%
CATAMARCA	280	220	696	27,27%	-59,77%	976	756	29,10%	12	8	11	50,00%	9,09%	23	17	35,29%	999	773	29,24%	0,76%
SAN LUIS	319	273	635	16,85%	-49,76%	954	856	11,45%	11	10	14	10,00%	-21,43%	25	17	47,06%	979	873	12,14%	0,74%
LA RIOJA	206	192	415	7,29%	-50,36%	621	608	2,14%	12	7	10	71,43%	20,00%	22	17	29,41%	643	625	2,88%	0,49%



Patentamientos por Provincias y Tipos -





Patentamientos por Regiones de Buenos Aires

Subregion	Automovil+Comercial Liviano								Comercial Pesado+Otros Pesados								Mercado Total		
	feb/08 (a)	feb/07 (b)	ene/08 (c)	Var a-b	Var a-c	Ac. 08	Ac. 07	Var 08-07	feb/08 (a)	feb/07 (b)	ene/08 (c)	Var a-b	Var a-c	Ac. 08	Ac. 07	Var 08-07	Ac. 08	Ac. 07	Var 08-07
GRAN BUENOS AIRES-OESTE	2.701	2.361	5.019	14,40%	-46,18%	7.720	7.363	4,85%	114	95	168	20,00%	-32,14%	282	239	17,99%	8.002	7.602	5,26%
GRAN BUENOS AIRES-SUR	2.474	2.135	4.241	15,88%	-41,66%	6.715	6.407	4,81%	85	119	135	-28,57%	-37,04%	220	341	-35,48%	6.935	6.748	2,77%
GRAN BUENOS AIRES-NORTE	1.621	1.418	2.607	14,32%	-37,82%	4.228	4.172	1,34%	53	56	54	-5,36%	-1,85%	107	120	-10,83%	4.335	4.292	1,00%
BUENOS AIRES-NORTE	1.372	1.136	2.755	20,77%	-50,20%	4.127	3.792	8,83%	99	72	106	37,50%	-6,60%	205	162	26,54%	4.332	3.954	9,56%
BUENOS AIRES-ATLANTICA	1.371	1.121	2.282	22,30%	-39,92%	3.653	3.205	13,98%	41	30	60	36,67%	-31,67%	101	89	13,48%	3.754	3.294	13,96%
BUENOS AIRES-OESTE	1.107	923	2.191	19,93%	-49,48%	3.298	3.118	5,77%	115	87	155	32,18%	-25,81%	270	188	43,62%	3.568	3.306	7,92%
BUENOS AIRES-LA PLATA	1.185	1.002	1.969	18,26%	-39,82%	3.154	3.079	2,44%	26	24	24	8,33%	8,33%	50	44	13,64%	3.204	3.123	2,59%
BUENOS AIRES-SUR	897	637	1.616	40,82%	-44,49%	2.513	2.061	21,93%	67	31	62	116,13%	8,06%	129	95	35,79%	2.642	2.156	22,54%
BUENOS AIRES-CENTRO	802	696	1.510	15,23%	-46,89%	2.312	2.156	7,24%	66	61	93	8,20%	-29,03%	159	151	5,30%	2.471	2.307	7,11%



Patentamientos por Regiones de Buenos Aires

