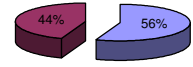




Patentamientos por Marcas - Mercado Total

	ene/08(a)	dic/07(b)	ene/07(c)	ene/06(d)	Var a-b	Var a-c	Var a-d	Ac. 08	Ac. 07	Var 08-07
Automovil	65.294	19.154	63.479	49.129	240,89%	2,86%	32,90%	65.294	63.479	2,86%
Comercial Liviano	16.557	3.866	15.226	13.242	328,27%	8,74%	25,03%	16.557	15.226	8,74%
Comercial Pesado	2.611	912	2.533	2.473	186,29%	3,08%	5,58%	2.611	2.533	3,08%
Otros Pesados	1.357	610	1.325	1.148	122,46%	2,42%	18,21%	1.357	1.325	2,42%
Total	85.819	24.542	82.563	65.992	249,68%	3,94%	30,04%	85.819	82.563	3,94%
Prom. diario	3.901	1.363	3.753	3.000				3.901	3.753	
Dias habiles	22	18	22	22				22	22	

Patentamientos por origen		
	Ene-08	Ac. 08
Importados	47.755	47.755
Nacionales	38.065	38.065



■ Importados ■ Nacionales

Patentamientos Mensuales												
	ene	feb	mar	abr	may	jun	jul	ago	sep	oct	nov	dic
2008	85.820											
2007	82.563	38.847	47.386	41.637	47.236	42.145	50.197	54.288	48.860	49.507	40.642	24.542
Var% 08-07	3,94%	-100,00%	-100,00%	-100,00%	-100,00%	-100,00%	-100,00%	-100,00%	-100,00%	-100,00%	-100,00%	-100,00%
2006	65.995	32.439	40.420	34.273	38.305	36.582	36.968	39.132	39.656	36.027	33.285	17.754
2005	52.466	26.364	30.599	32.960	33.469	32.593	34.184	31.927	36.152	30.593	29.394	15.982

Patentamientos por Marcas - Totales										2008	2008	2007	2007	Var
Marca	ene/08(a)	Part %	ene/07(c)	Part %	dic/07(e)	Part %	Var a-c	Var a-e	ene - ene	Part %	ene - ene	Part %	2008-2007	
Volkswagen	13.366	15,85%	15.909	19,59%	7.589	31,79%	-15,98%	76,12%	13.366	15,85%	15.909	19,59%	-15,98%	
Chevrolet	12.083	14,33%	11.424	14,06%	2.929	12,27%	5,77%	312,53%	12.083	14,33%	11.424	14,06%	5,77%	
Ford	10.977	13,02%	10.746	13,23%	2.898	12,14%	2,15%	278,78%	10.977	13,02%	10.746	13,23%	2,15%	
Renault	10.830	12,84%	13.163	16,21%	2.184	9,15%	-17,72%	395,88%	10.830	12,84%	13.163	16,21%	-17,72%	
Peugeot	9.114	10,81%	8.425	10,37%	2.700	11,31%	8,18%	237,56%	9.114	10,81%	8.425	10,37%	8,18%	
Fiat	8.797	10,43%	7.379	9,08%	1.933	8,10%	19,22%	355,10%	8.797	10,43%	7.379	9,08%	19,22%	
Toyota	4.532	5,37%	4.447	5,47%	877	3,67%	1,91%	416,76%	4.532	5,37%	4.447	5,47%	1,91%	
Citroen	4.135	4,90%	2.855	3,51%	742	3,11%	44,83%	457,28%	4.135	4,90%	2.855	3,51%	44,83%	
Honda	2.966	3,52%	922	1,14%	443	1,86%	221,69%	569,53%	2.966	3,52%	922	1,14%	221,69%	
Mercedes Benz	1.857	2,20%	1.631	2,01%	434	1,82%	13,86%	327,88%	1.857	2,20%	1.631	2,01%	13,86%	
Suzuki	890	1,06%	1.102	1,36%	259	1,08%	-19,24%	243,63%	890	1,06%	1.102	1,36%	-19,24%	
Nissan	726	0,86%	419	0,52%	117	0,49%	73,27%	520,51%	726	0,86%	419	0,52%	73,27%	
Hyundai	576	0,68%	203	0,25%	96	0,40%	183,74%	500,00%	576	0,68%	203	0,25%	183,74%	
Audi	539	0,64%	543	0,67%	75	0,31%	-0,74%	618,67%	539	0,64%	543	0,67%	-0,74%	
BMW	533	0,63%	455	0,56%	37	0,15%	17,14%	1340,54%	533	0,63%	455	0,56%	17,14%	
Iveco	440	0,52%	405	0,50%	144	0,60%	8,64%	205,56%	440	0,52%	405	0,50%	8,64%	
Kia	390	0,46%	251	0,31%	94	0,39%	55,38%	314,89%	390	0,46%	251	0,31%	55,38%	
Jeep	253	0,30%	104	0,13%	50	0,21%	143,27%	406,00%	253	0,30%	104	0,13%	143,27%	
Mitsubishi	246	0,29%	201	0,25%	44	0,18%	22,39%	459,09%	246	0,29%	201	0,25%	22,39%	
Chrysler	202	0,24%	144	0,18%	38	0,16%	40,28%	431,58%	202	0,24%	144	0,18%	40,28%	
Scania	201	0,24%	137	0,17%	49	0,21%	46,72%	310,20%	201	0,24%	137	0,17%	46,72%	
Dodge	156	0,19%	65	0,08%	9	0,04%	140,00%	1633,33%	156	0,19%	65	0,08%	140,00%	
Volvo	110	0,13%	62	0,08%	46	0,19%	77,42%	139,13%	110	0,13%	62	0,08%	77,42%	
Mini	78	0,09%	50	0,06%	15	0,06%	56,00%	420,00%	78	0,09%	50	0,06%	56,00%	
Subaru	69	0,08%	48	0,06%	22	0,09%	43,75%	213,64%	69	0,08%	48	0,06%	43,75%	
Agrale	68	0,08%	44	0,05%	26	0,11%	54,55%	161,54%	68	0,08%	44	0,05%	54,55%	
Puma de Tat	59	0,07%	17	0,02%		0,00%	247,06%	N/D	59	0,07%	17	0,02%	247,06%	
Porsche	48	0,06%	27	0,03%	5	0,02%	77,78%	860,00%	48	0,06%	27	0,03%	77,78%	
Seat	35	0,04%		0,00%	6	0,03%	N/D	483,33%	35	0,04%		0,00%	N/D	
Land Rover	31	0,04%	31	0,04%	9	0,04%	0,00%	244,44%	31	0,04%	31	0,04%	0,00%	
Alfa Romeo	9	0,01%	8	0,01%	3	0,01%	12,50%	200,00%	9	0,01%	8	0,01%	12,50%	
Ferrari	1	0,00%	1	0,00%	1	0,00%	0,00%	0,00%	1	0,00%	1	0,00%	0,00%	
Hummer	1	0,00%	2	0,00%		0,00%	-50,00%	N/D	1	0,00%	2	0,00%	-50,00%	
Jaguar	1	0,00%	2	0,00%	1	0,00%	-50,00%	0,00%	1	0,00%	2	0,00%	-50,00%	
Lamborghini	1	0,00%		0,00%		0,00%	N/D	N/D	1	0,00%		0,00%	N/D	
Aston Martin		0,00%		0,00%	1	0,00%	N/D	-100,00%		0,00%		0,00%	N/D	
Isuzu		0,00%	4	0,00%		0,00%	-100,00%	N/D		0,00%	4	0,00%	-100,00%	
Total	84.320		81.226		23.876				84.320		81.226			

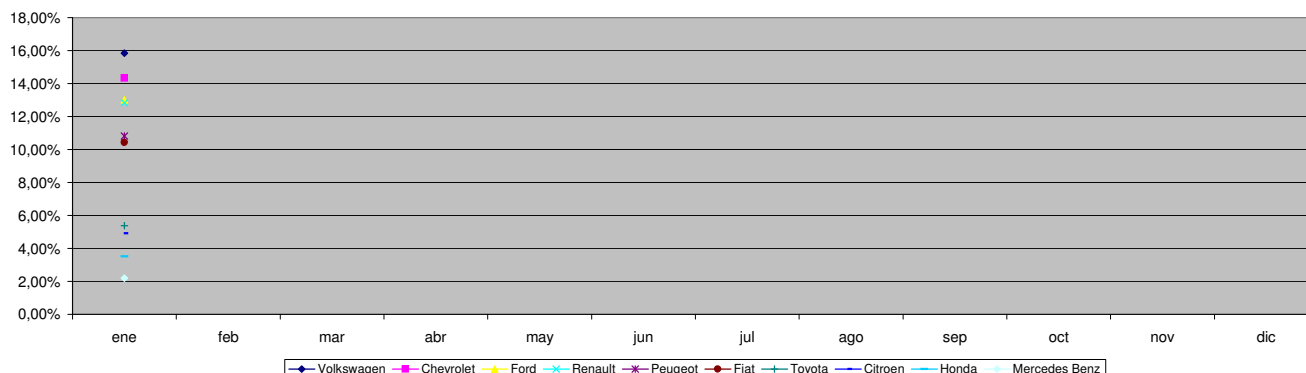


Patentamientos por Marcas - Mercado Total

Patentamientos por Marcas - Autos + Livianos									2008	2008	2007	2007	Var
Marca	ene/08(a)	Part %	ene/07(c)	Part %	dic/07(e)	Part %	Var a-c	Var a-e	ene - ene	Part %	ene - ene	Part %	2008-2007
Volkswagen	13.050	15,94%	15.581	19,80%	7.449	32,36%	-16,24%	75,19%	13.050	15,94%	15.581	19,80%	-16,24%
Chevrolet	12.083	14,76%	11.424	14,52%	2.929	12,72%	5,77%	312,53%	12.083	14,76%	11.424	14,52%	5,77%
Renault	10.769	13,16%	12.930	16,43%	2.149	9,34%	-16,71%	401,12%	10.769	13,16%	12.930	16,43%	-16,71%
Ford	10.512	12,84%	10.194	12,95%	2.691	11,69%	3,12%	290,64%	10.512	12,84%	10.194	12,95%	3,12%
Peugeot	9.114	11,14%	8.425	10,70%	2.700	11,73%	8,18%	237,56%	9.114	11,14%	8.425	10,70%	8,18%
Fiat	8.797	10,75%	7.379	9,38%	1.933	8,40%	19,22%	355,10%	8.797	10,75%	7.379	9,38%	19,22%
Toyota	4.532	5,54%	4.447	5,65%	877	3,81%	1,91%	416,76%	4.532	5,54%	4.447	5,65%	1,91%
Citroen	4.135	5,05%	2.855	3,63%	742	3,22%	44,83%	457,28%	4.135	5,05%	2.855	3,63%	44,83%
Honda	2.966	3,62%	922	1,17%	443	1,92%	221,69%	569,53%	2.966	3,62%	922	1,17%	221,69%
Mercedes Benz	927	1,13%	759	0,96%	161	0,70%	22,13%	475,78%	927	1,13%	759	0,96%	22,13%
Suzuki	890	1,09%	1.102	1,40%	259	1,13%	-19,24%	243,63%	890	1,09%	1.102	1,40%	-19,24%
Nissan	726	0,89%	419	0,53%	117	0,51%	73,27%	520,51%	726	0,89%	419	0,53%	73,27%
Hyundai	576	0,70%	140	0,18%	96	0,42%	311,43%	500,00%	576	0,70%	140	0,18%	311,43%
Audi	539	0,66%	543	0,69%	75	0,33%	-0,74%	618,67%	539	0,66%	543	0,69%	-0,74%
BMW	533	0,65%	455	0,58%	37	0,16%	17,14%	1340,54%	533	0,65%	455	0,58%	17,14%
Kia	390	0,48%	239	0,30%	94	0,41%	63,18%	314,89%	390	0,48%	239	0,30%	63,18%
Jeep	253	0,31%	104	0,13%	50	0,22%	143,27%	406,00%	253	0,31%	104	0,13%	143,27%
Mitsubishi	246	0,30%	201	0,26%	44	0,19%	22,39%	459,09%	246	0,30%	201	0,26%	22,39%
Chrysler	202	0,25%	144	0,18%	38	0,17%	40,28%	431,58%	202	0,25%	144	0,18%	40,28%
Dodge	156	0,19%	65	0,08%	9	0,04%	140,00%	1633,33%	156	0,19%	65	0,08%	140,00%
Iveco	127	0,16%	177	0,22%	41	0,18%	-28,25%	209,76%	127	0,16%	177	0,22%	-28,25%
Mini	78	0,10%	50	0,06%	15	0,07%	56,00%	420,00%	78	0,10%	50	0,06%	56,00%
Subaru	69	0,08%	48	0,06%	22	0,10%	43,75%	213,64%	69	0,08%	48	0,06%	43,75%
Volvo	51	0,06%	26	0,03%	23	0,10%	96,15%	121,74%	51	0,06%	26	0,03%	96,15%
Porsche	48	0,06%	27	0,03%	5	0,02%	77,78%	860,00%	48	0,06%	27	0,03%	77,78%
Seat	35	0,04%		0,00%	6	0,03%	N/D	483,33%	35	0,04%		0,00%	N/D
Land Rover	31	0,04%	31	0,04%	9	0,04%	0,00%	244,44%	31	0,04%	31	0,04%	0,00%
Alfa Romeo	9	0,01%	8	0,01%	3	0,01%	12,50%	200,00%	9	0,01%	8	0,01%	12,50%
Ferrari	1	0,00%	1	0,00%	1	0,00%	0,00%	0,00%	1	0,00%	1	0,00%	0,00%
Hummer	1	0,00%	2	0,00%		0,00%	-50,00%	N/D	1	0,00%	2	0,00%	-50,00%
Jaguar	1	0,00%	2	0,00%	1	0,00%	-50,00%	0,00%	1	0,00%	2	0,00%	-50,00%
Lamborghini	1	0,00%		0,00%		0,00%	N/D	N/D	1	0,00%		0,00%	N/D
Aston Martin		0,00%		0,00%	1	0,00%	N/D	-100,00%		0,00%		0,00%	N/D
Isuzu		0,00%	4	0,01%		0,00%	-100,00%	N/D		0,00%	4	0,01%	-100,00%
Total	81.848		78.704		23.020				81.848		78.704		

Patentamientos por Marcas - Camiones + Buses									2008	2008	2007	2007	Var
Marca	ene/08(a)	Part %	ene/07(c)	Part %	dic/07(e)	Part %	Var a-c	Var a-e	ene - ene	Part %	ene - ene	Part %	2008-2007
Mercedes Benz	930	37,62%	872	34,58%	273	31,89%	6,65%	240,66%	930	37,62%	872	34,58%	6,65%
Ford	465	18,81%	552	21,89%	207	24,18%	-15,76%	124,64%	465	18,81%	552	21,89%	-15,76%
Volkswagen	316	12,78%	328	13,01%	140	16,36%	-3,66%	125,71%	316	12,78%	328	13,01%	-3,66%
Iveco	313	12,66%	228	9,04%	103	12,03%	37,28%	203,88%	313	12,66%	228	9,04%	37,28%
Scania	201	8,13%	137	5,43%	49	5,72%	46,72%	310,20%	201	8,13%	137	5,43%	46,72%
Agrale	68	2,75%	44	1,74%	26	3,04%	54,55%	161,54%	68	2,75%	44	1,74%	54,55%
Renault	61	2,47%	233	9,24%	35	4,09%	-73,82%	74,29%	61	2,47%	233	9,24%	-73,82%
Puma de Tat	59	2,39%	17	0,67%		0,00%	247,06%	N/D	59	2,39%	17	0,67%	247,06%
Volvo	59	2,39%	36	1,43%	23	2,69%	63,89%	156,52%	59	2,39%	36	1,43%	63,89%
Hyundai		0,00%	63	2,50%		0,00%	-100,00%	N/D		0,00%	63	2,50%	-100,00%
Kia		0,00%	12	0,48%		0,00%	-100,00%	N/D		0,00%	12	0,48%	-100,00%
Total	2.472		2.522		856				2.472		2.522		

Participacion por Marcas - Evolucion Mensual

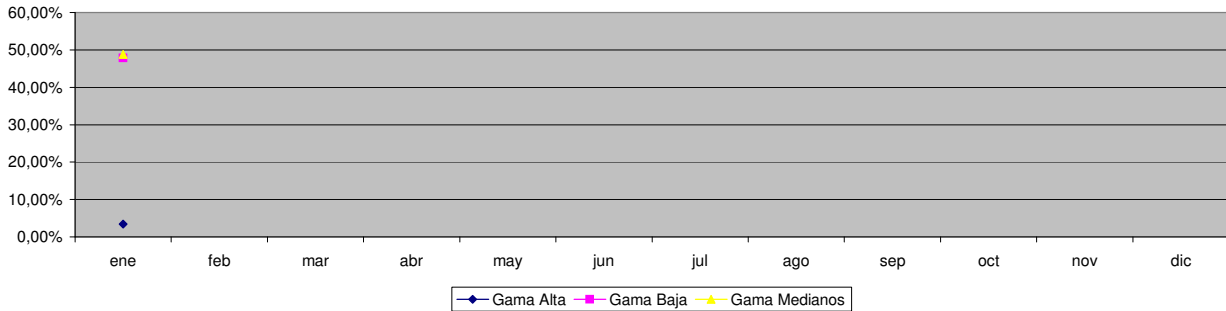




Patentamientos por Ranking de Automoviles - Mercado Total

Ranking Por Modelos - Automoviles												
Rank.	Modelo	ene/08 (a)	ene/07 (b)	dic/07 (c)	Var a-b	Var a-c	Ac. 08	Part %	Ac. 07	Part %	Var 08-07	
1	Chevrolet CORSA	4.549	4.068	1.217	11,82%	273,79%	4.549	6,97%	4.068	6,41%	11,82%	
2	Peugeot 206	4.252	4.216	1.338	0,85%	217,79%	4.252	6,51%	4.216	6,64%	0,85%	
3	Volkswagen GOL	4.161	5.869	5.506	-29,10%	-24,43%	4.161	6,37%	5.869	9,25%	-29,10%	
4	Peugeot 307	3.130	2.601	707	20,34%	342,72%	3.130	4,79%	2.601	4,10%	20,34%	
5	Ford ECOSPORT	2.762	2.447	776	12,87%	255,93%	2.762	4,23%	2.447	3,85%	12,87%	
6	Volkswagen SURAN	2.699	2.683	606	0,60%	345,38%	2.699	4,13%	2.683	4,23%	0,60%	
7	Renault MEGANE	2.495	2.772	328	-9,99%	660,67%	2.495	3,82%	2.772	4,37%	-9,99%	
8	Renault CLIO	2.376	5.119	530	-53,58%	348,30%	2.376	3,64%	5.119	8,06%	-53,58%	
9	Citroen C4	1.918		276	N/D	594,93%	1.918	2,94%		0,00%	N/D	
10	Ford FIESTA	1.908	2.177	364	-12,36%	424,18%	1.908	2,92%	2.177	3,43%	-12,36%	
11	Ford FOCUS	1.896	1.414	270	34,09%	602,22%	1.896	2,90%	1.414	2,23%	34,09%	
12	Volkswagen BORA	1.749	1.519	222	15,14%	687,84%	1.749	2,68%	1.519	2,39%	15,14%	
13	Chevrolet ASTRA	1.690	1.559	285	8,40%	492,98%	1.690	2,59%	1.559	2,46%	8,40%	
14	Fiat UNO	1.689	1.508	445	12,00%	279,55%	1.689	2,59%	1.508	2,38%	12,00%	
15	Volkswagen FOX/CROSSFOX	1.670	1.879	367	-11,12%	355,04%	1.670	2,56%	1.879	2,96%	-11,12%	
16	Renault KANGOO	1.634	830	291	96,87%	461,51%	1.634	2,50%	830	1,31%	96,87%	
17	Fiat SIENA	1.619	1.530	279	5,82%	480,29%	1.619	2,48%	1.530	2,41%	5,82%	
18	Fiat PALIO	1.583	1.872	466	-15,44%	239,70%	1.583	2,42%	1.872	2,95%	-15,44%	
19	Chevrolet CORSA II	1.489	1.364	470	9,16%	216,81%	1.489	2,28%	1.364	2,15%	9,16%	
20	Honda FIT	1.287	403	237	219,35%	443,04%	1.287	1,97%	403	0,63%	219,35%	
21	Fiat PUNTO	1.260		113	N/D	1015,04%	1.260	1,93%		0,00%	N/D	
22	Chevrolet MERIVA	1.193	1.383	303	-13,74%	293,73%	1.193	1,83%	1.383	2,18%	-13,74%	
23	Volkswagen VENTO	1.005	710	145	41,55%	593,10%	1.005	1,54%	710	1,12%	41,55%	
24	Renault MEGANE II	966	1.133	212	-14,74%	355,66%	966	1,48%	1.133	1,78%	-14,74%	
25	Citroen C3	934	1.256	157	-25,64%	494,90%	934	1,43%	1.256	1,98%	-25,64%	
26	Honda CIVIC	881	172	105	412,21%	739,05%	881	1,35%	172	0,27%	412,21%	
27	Ford KA	870	1.257	444	-30,79%	95,95%	870	1,33%	1.257	1,98%	-30,79%	
28	Fiat PALIO WEEKEND	862	908	185	-5,07%	365,95%	862	1,32%	908	1,43%	-5,07%	
29	Toyota COROLLA	804	926	131	-13,17%	513,74%	804	1,23%	926	1,46%	-13,17%	
30	Fiat IDEA	740	519	159	42,58%	365,41%	740	1,13%	519	0,82%	42,58%	
31	Chevrolet CORSA SW	729	705	177	3,40%	311,86%	729	1,12%	705	1,11%	3,40%	
32	Renault LOGAN	672		90	N/D	646,67%	672	1,03%		0,00%	N/D	
33	Volkswagen POLO	620	719	134	-13,77%	362,69%	620	0,95%	719	1,13%	-13,77%	
34	Suzuki FUN	602	1.030	213	-41,55%	182,63%	602	0,92%	1.030	1,62%	-41,55%	
35	Peugeot PARTNER	531	538	186	-1,30%	185,48%	531	0,81%	538	0,85%	-1,30%	
36	Renault SCENIC	412	727	79	-43,33%	421,52%	412	0,63%	727	1,15%	-43,33%	
37	Citroen PICASSO	407	523	82	-22,18%	396,34%	407	0,62%	523	0,82%	-22,18%	
38	Citroen BERLINGO	406	581	90	-30,12%	351,11%	406	0,62%	581	0,92%	-30,12%	
39	Chevrolet VECTRA	398	466	81	-14,59%	391,36%	398	0,61%	466	0,73%	-14,59%	
40	Chevrolet ZAFIRA	341	298	83	14,43%	310,84%	341	0,52%	298	0,47%	14,43%	
41	Nissan TIIDA	266		22	N/D	1109,09%	266	0,41%		0,00%	N/D	
42	Volkswagen GOL COUNTRY	259	881	189	-70,60%	37,04%	259	0,40%	881	1,39%	-70,60%	
43	BMW 300 SERIES	259	208	10	24,52%	2490,00%	259	0,40%	208	0,33%	24,52%	
44	Audi A3	247	260	39	-5,00%	533,33%	247	0,38%	260	0,41%	-5,00%	
45	Volkswagen GOLF	231	307	75	-24,76%	208,00%	231	0,35%	307	0,48%	-24,76%	
46	Mercedes Benz CLASE C	219	123	18	78,05%	1116,67%	219	0,34%	123	0,19%	78,05%	
47	Audi A4	186	222	24	-16,22%	675,00%	186	0,28%	222	0,35%	-16,22%	
48	Chrysler PT CRUISER	173	106	28	63,21%	517,86%	173	0,26%	106	0,17%	63,21%	
49	Volkswagen PASSAT	161	187	42	-13,90%	283,33%	161	0,25%	187	0,29%	-13,90%	
50	Peugeot 206 SW	155	104	85	49,04%	82,35%	155	0,24%	104	0,16%	49,04%	
51	Otros	1.949	1.400	470	39,21%	314,68%	1.949	2,98%	1.400	2,21%	39,21%	
Total		65.294	63.479	19.151			65.294	1	63.479			

Autos - Participacion por Segmento





Patentamientos por Ranking de Livianos y Pesados - Mercado Total

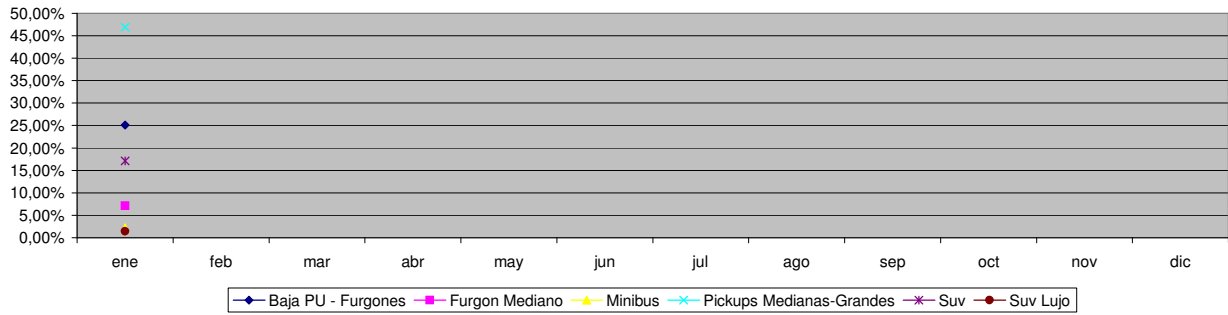
Comercial Liviano											
Rank.	Modelo	ene/08 (a)	ene/07 (b)	dic/07 (c)	Var a-b	Var a-c	Ac. 08	Part %	Ac. 07	Part %	Var 08-07
1	Toyota HILUX	2.918	2.885	603	1,14%	383,91%	2.918	17,63%	2.885	18,95%	1,14%
2	Ford RANGER	2.394	2.377	711	0,72%	236,71%	2.394	14,46%	2.377	15,61%	0,72%
3	Renault KANGOO FURGON	1.594	2.048	403	-22,17%	295,53%	1.594	9,63%	2.048	13,45%	-22,17%
4	Chevrolet S-10	1.455	1.484	286	-1,95%	408,74%	1.455	8,79%	1.484	9,75%	-1,95%
5	Peugeot PARTNER FURGON	860	754	291	14,06%	195,53%	860	5,20%	754	4,95%	14,06%
6	Honda CRV	764	230	83	232,17%	820,48%	764	4,62%	230	1,51%	232,17%
7	Fiat FIORINO	612	496	150	23,39%	308,00%	612	3,70%	496	3,26%	23,39%
8	Mercedes Benz SPRINTER	532	476	120	11,76%	343,33%	532	3,21%	476	3,13%	11,76%
9	Toyota HILUX SW4	434	383	66	13,32%	557,58%	434	2,62%	383	2,52%	13,32%
10	Citroen BERLINGO FURGON	410	437	122	-6,18%	236,07%	410	2,48%	437	2,87%	-6,18%
11	Ford F 100	407	384	77	5,99%	428,57%	407	2,46%	384	2,52%	5,99%
12	Renault MASTER	403	249	132	61,85%	205,30%	403	2,43%	249	1,64%	61,85%
13	Volkswagen SAVEIRO	276	536	106	-48,51%	160,38%	276	1,67%	536	3,52%	-48,51%
14	Nissan FRONTIER	263	259	48	1,54%	447,92%	263	1,59%	259	1,70%	1,54%
15	Hyundai TUCSON	200	38	24	426,32%	733,33%	200	1,21%	38	0,25%	426,32%
16	Fiat STRADA	189	228	31	-17,11%	509,68%	189	1,14%	228	1,50%	-17,11%
17	Mitsubishi L200	181	142	29	27,46%	524,14%	181	1,09%	142	0,93%	27,46%
18	Hyundai SANTA FE	181	58	23	212,07%	686,96%	181	1,09%	58	0,38%	212,07%
19	Dodge RAM	156	65	9	140,00%	1633,33%	156	0,94%	65	0,43%	140,00%
20	Suzuki GRAND VITARA	150	72	27	108,33%	455,56%	150	0,91%	72	0,47%	108,33%
21	Otros	2.175	1.624	524	33,93%	315,08%	2.175	13,14%	1.624	10,67%	33,93%
Total		16.554	15.225	3.865			16.554	1	15.225		

Comercial Pesado											
Rank.	Modelo	ene/08 (a)	ene/07 (b)	dic/07 (c)	Var a-b	Var a-c	Ac. 08	Part %	Ac. 07	Part %	Var 08-07
1	Ford CARGO 1722 E	178		60	N/D	196,67%	178	7,20%		0,00%	N/D
2	Mercedes Benz LS 1634	147	185	57	-20,54%	157,89%	147	5,95%	185	7,85%	-20,54%
3	Mercedes Benz L-1624	129		40	N/D	222,50%	129	5,22%		0,00%	N/D
4	Mercedes Benz OF 1418	119	10	21	1090,00%	466,67%	119	4,81%	10	0,42%	1090,00%
5	Iveco 450 E	114	106	32	7,55%	256,25%	114	4,61%	106	4,50%	7,55%
6	Iveco 170 E	112	74	53	51,35%	111,32%	112	4,53%	74	3,14%	51,35%
7	Ford F-4000	105	70	38	50,00%	176,32%	105	4,25%	70	2,97%	50,00%
8	Mercedes Benz 710	88	70	23	25,71%	282,61%	88	3,56%	70	2,97%	25,71%
9	Mercedes Benz 1315	88	61	5	44,26%	1660,00%	88	3,56%	61	2,59%	44,26%
10	Ford CARGO 1832 E	82		51	N/D	60,78%	82	3,32%		0,00%	N/D
11	Mercedes Benz O-500	74	51	31	45,10%	138,71%	74	2,99%	51	2,16%	45,10%
12	Volkswagen 17220	71	91	28	-21,98%	153,57%	71	2,87%	91	3,86%	-21,98%
13	Volkswagen 13180	68	71	18	-4,23%	277,78%	68	2,75%	71	3,01%	-4,23%
14	Volkswagen 19320	62		11	N/D	463,64%	62	2,51%		0,00%	N/D
15	Scania R340	61	1	11	6000,00%	454,55%	61	2,47%	1	0,04%	6000,00%
16	Mercedes Benz L1634	58	81	19	-28,40%	205,26%	58	2,35%	81	3,44%	-28,40%
17	Mercedes Benz ATEGO 1725	58		24	N/D	141,67%	58	2,35%		0,00%	N/D
18	Puma de Tat D12	49	1		4800,00%	N/D	49	1,98%	1	0,04%	4800,00%
19	Mercedes Benz OF 1722	46	31	3	48,39%	1433,33%	46	1,86%	31	1,32%	48,39%
20	Renault PREMIUM	43	39	23	10,26%	86,96%	43	1,74%	39	1,66%	10,26%
21	Otros	720	1.414	307	-49,08%	134,53%	720	29,13%	1.414	60,02%	-49,08%
Total		2.472	2.356	855			2.472	1	2.356		

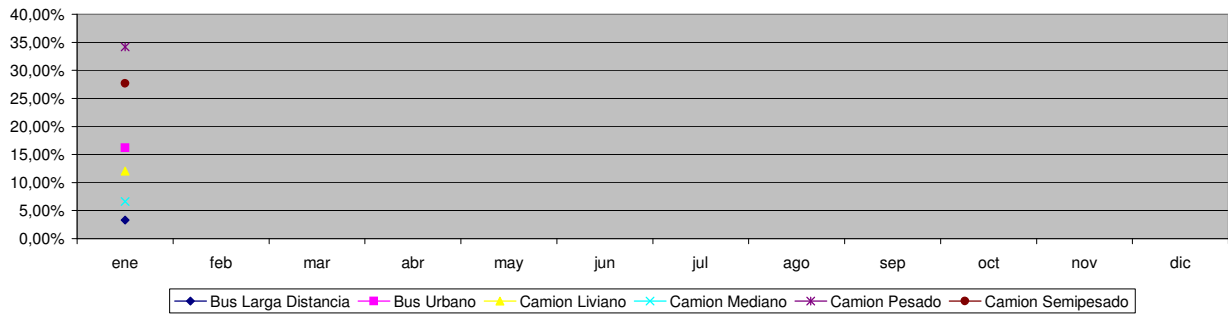


Patentamientos por Ranking de Livianos y Pesados - Mercado Total

Comercial Liviano



Comercial Pesado



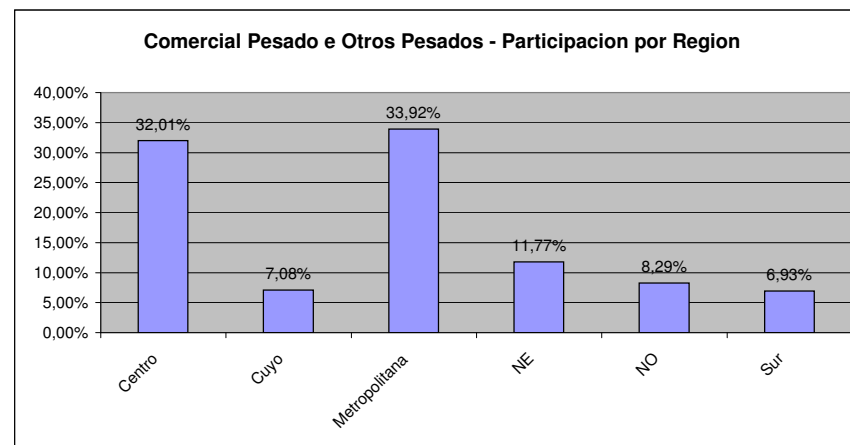
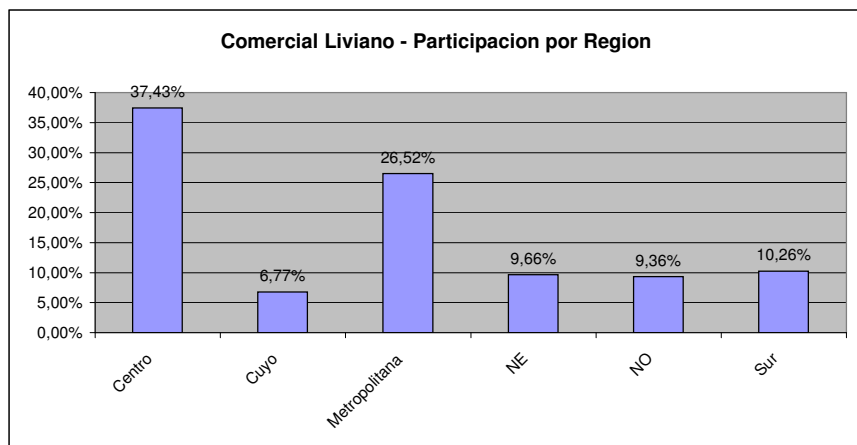
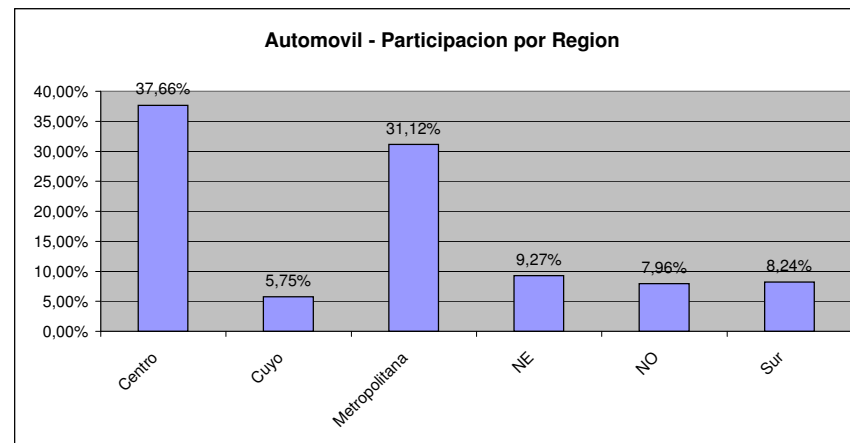
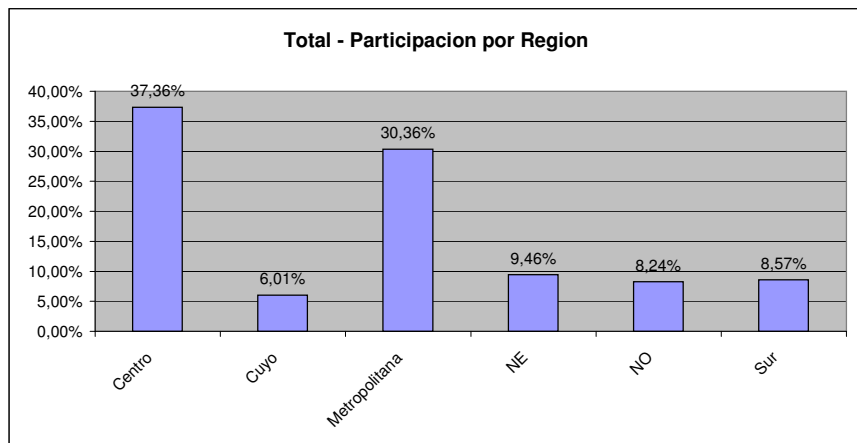


Patentamientos por Provincias y Tipos -

Distrito	Automovil+Comercial Liviano							Comercial Pesado+Otros Pesados							Mercado Total					
	ene/08 (a)	ene/07 (b)	dic/07 (c)	Var a-b	Var a-c	Ac. 08	Ac. 07	Var 08-07	ene/08 (a)	ene/07 (b)	dic/07 (c)	Var a-b	Var a-c	Ac. 08	Ac. 07	Var 08-07	Ac. 08	Ac. 07	Var 08-07	Part %
CAPITAL FEDERAL	12.846	13.945	6.996	-7,88%	83,62%	12.846	13.945	-7,88%	989	981	402	0,82%	146,02%	989	981	0,82%	13.835	14.926	-7,31%	16,12%
BUENOS AIRES	12.323	11.889	3.059	3,65%	302,84%	12.323	11.889	3,65%	500	431	241	16,01%	107,47%	500	431	16,01%	12.823	12.320	4,08%	14,94%
GRAN BUENOS AIRES	11.867	12.023	3.948	-1,30%	200,58%	11.867	12.023	-1,30%	357	435	117	-17,93%	205,13%	357	435	-17,93%	12.224	12.458	-1,88%	14,24%
CORDOBA	9.575	8.327	1.725	14,99%	455,07%	9.575	8.327	14,99%	330	285	154	15,79%	114,29%	330	285	15,79%	9.905	8.612	15,01%	11,54%
SANTA FE	7.770	7.382	1.834	5,26%	323,66%	7.770	7.382	5,26%	402	324	143	24,07%	181,12%	402	324	24,07%	8.172	7.706	6,05%	9,52%
MENDOZA	3.309	2.933	603	12,82%	448,76%	3.309	2.933	12,82%	211	173	48	21,97%	339,58%	211	173	21,97%	3.520	3.106	13,33%	4,10%
ENTRE RIOS	2.220	2.137	352	3,88%	530,68%	2.220	2.137	3,88%	145	118	34	22,88%	326,47%	145	118	22,88%	2.365	2.255	4,88%	2,76%
CHUBUT	1.926	1.965	527	-1,98%	265,46%	1.926	1.965	-1,98%	87	119	37	-26,89%	135,14%	87	119	-26,89%	2.013	2.084	-3,41%	2,35%
NEUQUEN	1.905	1.768	372	7,75%	412,10%	1.905	1.768	7,75%	86	115	41	-25,22%	109,76%	86	115	-25,22%	1.991	1.883	5,74%	2,32%
CORRIENTES	1.728	1.511	231	14,36%	648,05%	1.728	1.511	14,36%	163	105	29	55,24%	462,07%	163	105	55,24%	1.891	1.616	17,02%	2,20%
SALTA	1.783	1.691	324	5,44%	450,31%	1.783	1.691	5,44%	106	111	34	-4,50%	211,76%	106	111	-4,50%	1.889	1.802	4,83%	2,20%
TUCUMAN	1.841	1.768	393	4,13%	368,45%	1.841	1.768	4,13%	47	60	24	-21,67%	95,83%	47	60	-21,67%	1.888	1.828	3,28%	2,20%
CHACO	1.615	1.391	161	16,10%	903,11%	1.615	1.391	16,10%	109	81	32	34,57%	240,63%	109	81	34,57%	1.724	1.472	17,12%	2,01%
MISIONES	1.354	1.386	116	-2,31%	1067,24%	1.354	1.386	-2,31%	39	52	12	-25,00%	225,00%	39	52	-25,00%	1.393	1.438	-3,13%	1,62%
SANTA CRUZ	1.234	1.106	443	11,57%	178,56%	1.234	1.106	11,57%	40	56	22	-28,57%	81,82%	40	56	-28,57%	1.274	1.162	9,64%	1,48%
RIO NEGRO	1.211	1.163	281	4,13%	330,96%	1.211	1.163	4,13%	37	41	15	-9,76%	146,67%	37	41	-9,76%	1.248	1.204	3,65%	1,45%
LA PAMPA	1.121	1.022	202	9,69%	454,95%	1.121	1.022	9,69%	38	37	20	2,70%	90,00%	38	37	2,70%	1.159	1.059	9,44%	1,35%
JUJUY	995	868	273	14,63%	264,47%	995	868	14,63%	119	146	55	-18,49%	116,36%	119	146	-18,49%	1.115	1.014	9,96%	1,30%
SANTIAGO DEL ESTERO	1.014	788	81	28,68%	1151,85%	1.014	788	28,68%	36	37	15	-2,70%	140,00%	36	37	-2,70%	1.050	825	27,27%	1,22%
SAN JUAN	929	792	169	17,30%	449,70%	929	792	17,30%	56	30	9	86,67%	522,22%	56	30	86,67%	985	822	19,83%	1,15%
TIERRA DEL FUEGO	802	753	499	6,51%	60,72%	802	753	6,51%	25	27	12	-7,41%	108,33%	25	27	-7,41%	827	780	6,03%	0,96%
FORMOSA	737	563	66	30,91%	1016,67%	737	563	30,91%	11	67	2	-83,58%	450,00%	11	67	-83,58%	748	630	18,73%	0,87%
CATAMARCA	696	536	86	29,85%	709,30%	696	536	29,85%	11	9	1	22,22%	1000,00%	11	9	22,22%	707	545	29,72%	0,82%
SAN LUIS	635	583	207	8,92%	206,76%	635	583	8,92%	14	7	10	100,00%	40,00%	14	7	100,00%	649	590	10,00%	0,76%
LA RIOJA	415	415	72	0,00%	476,39%	415	415	0,00%	10	11	13	-9,09%	-23,08%	10	11	-9,09%	425	426	-0,23%	0,50%



Patentamientos por Provincias y Tipos -





Patentamientos por Regiones de Buenos Aires

Subregion	Automovil+Comercial Liviano								Comercial Pesado+Otros Pesados								Mercado Total		
	ene/08 (a)	ene/07 (b)	dic/07 (c)	Var a-b	Var a-c	Ac. 08	Ac. 07	Var 08-07	ene/08 (a)	ene/07 (b)	dic/07 (c)	Var a-b	Var a-c	Ac. 08	Ac. 07	Var 08-07	Ac. 08	Ac. 07	Var 08-07
GRAN BUENOS AIRES-OESTE	5.019	5.001	1.621	0,36%	209,62%	5.019	5.001	0,36%	168	145	47	15,86%	257,45%	168	145	15,86%	5.187	5.146	0,80%
GRAN BUENOS AIRES-SUR	4.241	4.270	1.476	-0,68%	187,33%	4.241	4.270	-0,68%	135	224	50	-39,73%	170,00%	135	224	-39,73%	4.376	4.494	-2,63%
BUENOS AIRES-NORTE	2.755	2.653	717	3,84%	284,24%	2.755	2.653	3,84%	106	93	49	13,98%	116,33%	106	93	13,98%	2.861	2.746	4,19%
GRAN BUENOS AIRES-NORTE	2.607	2.752	851	-5,27%	206,35%	2.607	2.752	-5,27%	54	66	20	-18,18%	170,00%	54	66	-18,18%	2.661	2.818	-5,57%
BUENOS AIRES-OESTE	2.191	2.194	412	-0,14%	431,80%	2.191	2.194	-0,14%	155	102	67	51,96%	131,34%	155	102	51,96%	2.346	2.296	2,18%
BUENOS AIRES-ATLANTICA	2.282	2.084	468	9,50%	387,61%	2.282	2.084	9,50%	60	59	42	1,69%	42,86%	60	59	1,69%	2.342	2.143	9,29%
BUENOS AIRES-LA PLATA	1.969	2.077	744	-5,20%	164,65%	1.969	2.077	-5,20%	24	20	10	20,00%	140,00%	24	20	20,00%	1.993	2.097	-4,96%
BUENOS AIRES-SUR	1.616	1.421	355	13,72%	355,21%	1.616	1.421	13,72%	62	67	34	-7,46%	82,35%	62	67	-7,46%	1.678	1.488	12,77%
BUENOS AIRES-CENTRO	1.510	1.460	363	3,42%	315,98%	1.510	1.460	3,42%	93	90	39	3,33%	138,46%	93	90	3,33%	1.603	1.550	3,42%



Patentamientos por Regiones de Buenos Aires

