



**Patentamientos por Marcas - Mercado Total**

	oct/09(a)	sep/09(b)	oct/08(c)	oct/07(d)	Var a-b	Var a-c	Var a-d	Ac. 09	Ac. 08	Var 09-08
<b>Automovil</b>	31.208	36.362	38.318	36.591	-14,17%	-18,56%	-14,71%	354.786	414.124	-14,33%
<b>Comercial Liviano</b>	7.113	7.786	9.490	9.314	-8,64%	-25,05%	-23,63%	80.796	107.612	-24,92%
<b>Comercial Pesado</b>	1.170	1.225	2.068	2.287	-4,49%	-43,42%	-48,84%	11.809	20.758	-43,11%
<b>Otros Pesados</b>	618	648	1.160	1.305	-4,63%	-46,72%	-52,64%	6.901	12.867	-46,37%
<b>Total</b>	<b>40.109</b>	<b>46.021</b>	<b>51.036</b>	<b>49.497</b>	<b>-12,85%</b>	<b>-21,41%</b>	<b>-18,97%</b>	<b>454.292</b>	<b>555.361</b>	<b>-18,20%</b>
<b>Prom. diario</b>	1.910	2.092	2.320	2.250				2.227	2.657	
<b>Dias habiles</b>	21	22	22	22				204	209	

Patentamientos por origen		
	09-Oct	Ac. 09
Importados	0	244.753
Nacionales	0	169.430



■ Importados ■ Nacionales

**Patentamientos Mensuales**

	ene	feb	mar	abr	may	jun	jul	ago	sep	oct	nov	dic
2009	73.927	39.075	41.303	40.529	40.148	44.111	46.635	42.434	46.021	40.109		
2008	85.811	46.476	44.277	56.149	56.809	49.082	58.414	51.110	56.197	51.036	35.528	19.891
<b>Var% 09-08</b>	<b>-13,85%</b>	<b>-15,92%</b>	<b>-6,72%</b>	<b>-27,82%</b>	<b>-29,33%</b>	<b>-10,13%</b>	<b>-20,16%</b>	<b>-16,98%</b>	<b>-18,11%</b>	<b>-21,41%</b>	<b>-100,00%</b>	<b>-100,00%</b>
2007	82.552	38.841	47.379	41.626	47.231	42.139	50.182	54.285	48.857	49.497	40.640	24.528
2006	65.984	32.425	40.400	34.249	38.284	36.566	36.948	39.123	39.641	36.009	33.252	17.725

**Patentamientos por Marcas - Totales**

Marca	2009				2009		2008		2008		2009-2008		
	oct/09(a)	Part %	oct/08(c)	Part %	ene - oct	Part %	ene - oct	Part %					
Volkswagen	8.606	21,79%	9.978	20,01%	9.586	21,13%	-13,75%	-10,22%	87.107	19,47%	100.988	18,62%	-13,75%
Chevrolet	4.810	12,18%	7.071	14,18%	6.230	13,73%	-31,98%	-22,79%	62.939	14,07%	76.897	14,18%	-18,15%
Ford	5.668	14,35%	6.627	13,29%	6.501	14,33%	-14,47%	-12,81%	60.586	13,54%	67.713	12,48%	-10,53%
Renault	4.882	12,36%	5.260	10,55%	5.937	13,08%	-7,19%	-17,77%	55.169	12,33%	63.175	11,65%	-12,67%
Fiat	4.111	10,41%	5.361	10,75%	4.349	9,58%	-23,32%	-5,47%	44.209	9,88%	57.764	10,65%	-23,47%
Peugeot	3.155	7,99%	4.448	8,92%	3.733	8,23%	-29,07%	-15,48%	40.805	9,12%	53.913	9,94%	-24,31%
Toyota	2.331	5,90%	2.623	5,26%	2.241	4,94%	-11,13%	4,02%	26.559	5,94%	27.903	5,14%	-4,82%
Citroen	1.391	3,52%	1.653	3,31%	1.735	3,82%	-15,85%	-19,83%	18.127	4,05%	20.160	3,72%	-10,08%
Honda	1.096	2,78%	1.513	3,03%	1.266	2,79%	-27,56%	-13,43%	13.608	3,04%	17.627	3,25%	-22,80%
Mercedes Benz	797	2,02%	1.289	2,58%	814	1,79%	-38,17%	-2,09%	9.283	2,08%	13.402	2,47%	-30,73%
Suzuki	507	1,28%	824	1,65%	568	1,25%	-38,47%	-10,74%	5.855	1,31%	8.306	1,53%	-29,51%
Nissan	346	0,88%	383	0,77%	321	0,71%	-9,66%	7,79%	3.552	0,79%	5.864	1,08%	-39,43%
Hyundai	291	0,74%	435	0,87%	360	0,79%	-33,10%	-19,17%	3.112	0,70%	4.523	0,83%	-31,20%
Audi	162	0,41%	285	0,57%	219	0,48%	-43,16%	-26,03%	2.466	0,55%	3.075	0,57%	-19,80%
Iveco	229	0,58%	395	0,79%	299	0,66%	-42,03%	-23,41%	2.001	0,45%	4.113	0,76%	-51,35%
BMW	162	0,41%	186	0,37%	239	0,53%	-12,90%	-32,22%	1.997	0,45%	2.617	0,48%	-23,69%
Kia	197	0,50%	459	0,92%	181	0,40%	-57,08%	8,84%	1.904	0,43%	3.392	0,63%	-43,87%
Dodge	122	0,31%	35	0,07%	121	0,27%	248,57%	0,83%	1.179	0,26%	941	0,17%	25,29%
Chery	93	0,24%	74	0,15%	143	0,32%	25,68%	-34,97%	1.119	0,25%	257	0,05%	335,41%
Chrysler	61	0,15%	197	0,39%	90	0,20%	-69,04%	-32,22%	883	0,20%	1.539	0,28%	-42,63%
Scania	50	0,13%	136	0,27%	67	0,15%	-63,24%	-25,37%	816	0,18%	1.491	0,27%	-45,27%
Jeep	53	0,13%	107	0,21%	41	0,09%	-50,47%	29,27%	799	0,18%	1.480	0,27%	-46,01%
Mitsubishi	70	0,18%	134	0,27%	62	0,14%	-47,76%	12,90%	628	0,14%	1.638	0,30%	-61,66%
Agrale	76	0,19%	65	0,13%	56	0,12%	16,92%	35,71%	563	0,13%	555	0,10%	1,44%
Seat	65	0,16%	52	0,10%	66	0,15%	25,00%	-1,52%	537	0,12%	426	0,08%	26,06%
Volvo	45	0,11%	111	0,22%	42	0,09%	-59,46%	7,14%	497	0,11%	1.094	0,20%	-54,57%
Mini	39	0,10%	31	0,06%	35	0,08%	25,81%	11,43%	338	0,08%	409	0,08%	-17,36%
Subaru	42	0,11%	52	0,10%	21	0,05%	-19,23%	100,00%	315	0,07%	507	0,09%	-37,87%
Puma de Tat	4	0,01%	69	0,14%	3	0,01%	-94,20%	33,33%	139	0,03%	306	0,06%	-54,58%
Land Rover	15	0,04%	11	0,02%	16	0,04%	36,36%	-6,25%	104	0,02%	190	0,04%	-45,26%
Porsche	3	0,01%	11	0,02%	13	0,03%	-72,73%	-76,92%	73	0,02%	174	0,03%	-58,05%
Materfer	4	0,01%	1	0,00%	1	0,00%	300,00%	300,00%	38	0,01%	1	0,00%	3700,00%
Alfa Romeo	7	0,02%		0,00%	17	0,04%	N/D	-58,82%	30	0,01%	27	0,00%	11,11%
Mack		0,00%		0,00%		0,00%	N/D	N/D	9	0,00%		0,00%	N/D
Ferrari		0,00%		0,00%		0,00%	N/D	N/D	4	0,00%	4	0,00%	0,00%
Jaguar		0,00%		0,00%		0,00%	N/D	N/D	4	0,00%	2	0,00%	100,00%
Lexus		0,00%		0,00%		0,00%	N/D	N/D	1	0,00%		0,00%	N/D
Hummer		0,00%		0,00%		0,00%	N/D	N/D		0,00%	2	0,00%	-100,00%
Lamborghini		0,00%		0,00%		0,00%	N/D	N/D		0,00%	1	0,00%	-100,00%
<b>Total</b>	<b>39.490</b>		<b>49.876</b>		<b>45.373</b>				<b>447.355</b>		<b>542.476</b>		

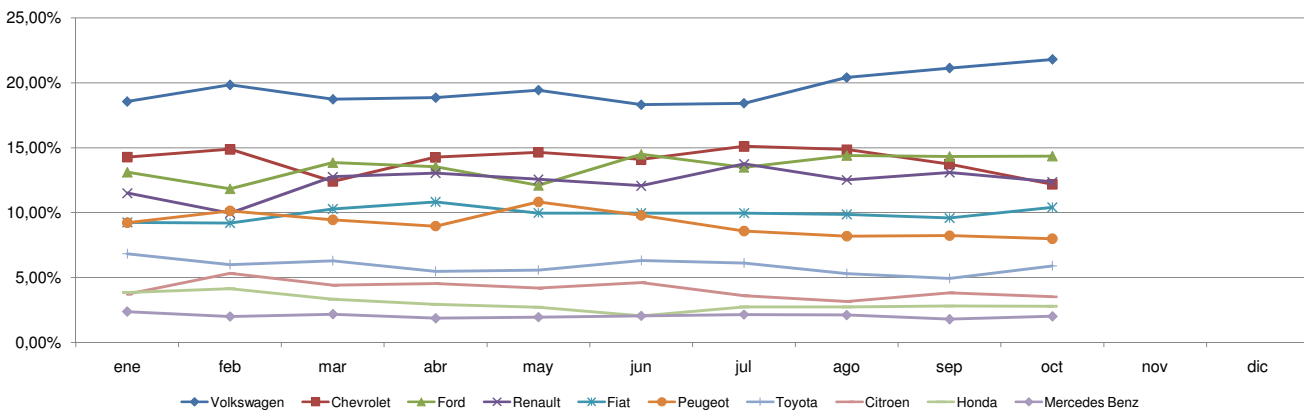


Patentamientos por Marcas - Mercado Total

Patentamientos por Marcas - Autos + Livianos								2009	2009	2008	2008	Var	
Marca	oct/09(a)	Part %	oct/08(c)	Part %	sep/09(e)	Part %	Var a-c	Var a-e	ene - oct	Part %	ene - oct	Part %	2009-2008
Volkswagen	8.492	22,16%	9.763	20,42%	9.484	21,48%	-13,02%	-10,46%	86.059	19,76%	98.460	18,87%	-12,59%
Chevrolet	4.810	12,55%	7.071	14,79%	6.230	14,11%	-31,98%	-22,79%	62.939	14,45%	76.897	14,74%	-18,15%
Ford	5.401	14,09%	6.245	13,06%	6.254	14,17%	-13,51%	-13,64%	58.386	13,40%	63.640	12,20%	-8,26%
Renault	4.842	12,64%	5.193	10,86%	5.897	13,36%	-6,76%	-17,89%	54.897	12,60%	62.601	12,00%	-12,31%
Fiat	4.111	10,73%	5.361	11,21%	4.349	9,85%	-23,32%	-5,47%	44.209	10,15%	57.764	11,07%	-23,47%
Peugeot	3.155	8,23%	4.448	9,30%	3.733	8,46%	-29,07%	-15,48%	40.805	9,37%	53.913	10,33%	-24,31%
Toyota	2.331	6,08%	2.623	5,49%	2.241	5,08%	-11,13%	4,02%	26.559	6,10%	27.903	5,35%	-4,82%
Citroen	1.391	3,63%	1.653	3,46%	1.735	3,93%	-15,85%	-19,83%	18.127	4,16%	20.160	3,86%	-10,08%
Honda	1.096	2,86%	1.513	3,16%	1.266	2,87%	-27,56%	-13,43%	13.608	3,12%	17.627	3,38%	-22,80%
Suzuki	507	1,32%	824	1,72%	568	1,29%	-38,47%	-10,74%	5.855	1,34%	8.306	1,59%	-29,51%
Mercedes Benz	376	0,98%	550	1,15%	353	0,80%	-1,15%	6,52%	4.319	0,99%	5.956	1,14%	-27,48%
Nissan	346	0,90%	383	0,80%	321	0,73%	-9,66%	7,79%	3.552	0,82%	5.864	1,12%	-39,43%
Hyundai	272	0,71%	399	0,83%	343	0,78%	-31,83%	-20,70%	2.962	0,68%	4.307	0,83%	-31,23%
Audi	162	0,42%	285	0,60%	219	0,50%	-43,16%	-26,03%	2.466	0,57%	3.075	0,58%	-19,80%
BMW	162	0,42%	186	0,39%	239	0,54%	-12,90%	-32,22%	1.997	0,46%	2.617	0,50%	-23,69%
Kia	197	0,51%	459	0,96%	181	0,41%	-57,08%	8,84%	1.904	0,44%	3.392	0,65%	-43,87%
Dodge	122	0,32%	35	0,07%	121	0,27%	248,57%	0,83%	1.179	0,27%	941	0,18%	25,29%
Chery	93	0,24%	74	0,15%	143	0,32%	25,68%	-34,97%	1.119	0,26%	257	0,05%	335,41%
Chrysler	61	0,16%	197	0,41%	90	0,20%	-69,04%	-32,22%	883	0,20%	1.539	0,29%	-42,63%
Jeep	53	0,14%	107	0,22%	41	0,09%	-50,47%	29,27%	799	0,18%	1.480	0,28%	-46,01%
Iveco	77	0,20%	114	0,24%	88	0,20%	-32,46%	-12,50%	709	0,16%	1.238	0,24%	-42,73%
Mitsubishi	70	0,18%	134	0,28%	62	0,14%	-47,76%	12,90%	628	0,14%	1.638	0,31%	-61,66%
Seat	65	0,17%	52	0,11%	66	0,15%	25,00%	-1,52%	537	0,12%	426	0,08%	26,06%
Mini	39	0,10%	31	0,06%	35	0,08%	25,81%	11,43%	338	0,08%	409	0,08%	-17,36%
Subaru	42	0,11%	52	0,11%	21	0,05%	-19,23%	100,00%	315	0,07%	507	0,10%	-37,87%
Volvo	22	0,06%	34	0,07%	21	0,05%	-35,29%	4,76%	205	0,05%	418	0,08%	-50,96%
Land Rover	15	0,04%	11	0,02%	16	0,04%	36,36%	-6,25%	104	0,02%	190	0,04%	-45,26%
Porsche	3	0,01%	11	0,02%	13	0,03%	-72,73%	-76,92%	73	0,02%	174	0,03%	-58,05%
Alfa Romeo	7	0,02%		0,00%	17	0,04%	N/D	-58,82%	30	0,01%	27	0,01%	11,11%
Ferrari		0,00%		0,00%		0,00%	N/D	N/D	4	0,00%	4	0,00%	0,00%
Jaguar		0,00%		0,00%		0,00%	N/D	N/D	4	0,00%	2	0,00%	100,00%
Agrale		0,00%		0,00%	1	0,00%	N/D	-100,00%	2	0,00%	1	0,00%	100,00%
Lexus		0,00%		0,00%		0,00%	N/D	N/D	1	0,00%		0,00%	N/D
Hummer		0,00%		0,00%		0,00%	N/D	N/D		0,00%	2	0,00%	-100,00%
Lamborghini		0,00%		0,00%		0,00%	N/D	N/D		0,00%	1	0,00%	-100,00%
<b>Total</b>	<b>38.320</b>		<b>47.808</b>		<b>44.148</b>				<b>435.574</b>		<b>521.736</b>		

Patentamientos por Marcas - Camiones + Buses								2009	2009	2008	2008	Var	
Marca	oct/09(a)	Part %	oct/08(c)	Part %	sep/09(e)	Part %	Var a-c	Var a-e	ene - oct	Part %	ene - oct	Part %	2009-2008
Mercedes Benz	421	35,98%	739	35,74%	461	37,63%	-43,03%	-8,68%	4.964	42,14%	7.446	35,90%	-33,33%
Ford	267	22,82%	382	18,47%	247	20,16%	-30,10%	8,10%	2.200	18,67%	4.073	19,64%	-45,99%
Iveco	152	12,99%	281	13,59%	211	17,22%	-45,91%	-27,96%	1.292	10,97%	2.875	13,86%	-55,06%
Volkswagen	114	9,74%	215	10,40%	102	8,33%	-46,98%	11,76%	1.048	8,90%	2.528	12,19%	-58,54%
Scania	50	4,27%	136	6,58%	67	5,47%	-63,24%	-25,37%	816	6,93%	1.491	7,19%	-45,27%
Agrale	76	6,50%	65	3,14%	55	4,49%	16,92%	38,18%	561	4,76%	554	2,67%	1,26%
Volvo	23	1,97%	77	3,72%	21	1,71%	-70,13%	9,52%	292	2,48%	676	3,26%	-56,80%
Renault	40	3,42%	67	3,24%	40	3,27%	-40,30%	0,00%	272	2,31%	574	2,77%	-52,61%
Hyundai	19	1,62%	36	1,74%	17	1,39%	-47,22%	11,76%	150	1,27%	216	1,04%	-30,56%
Puma de Tat	4	0,34%	69	3,34%	3	0,24%	-94,20%	33,33%	139	1,18%	306	1,48%	-54,58%
Materfer	4	0,34%	1	0,05%	1	0,08%	300,00%	300,00%	38	0,32%	1	0,00%	3700,00%
Mack		0,00%		0,00%		0,00%	N/D	N/D	9	0,08%		0,00%	N/D
<b>Total</b>	<b>1.170</b>		<b>2.068</b>		<b>1.225</b>				<b>11.781</b>		<b>20.740</b>		

Participacion por Marcas - Evolucion Mensual

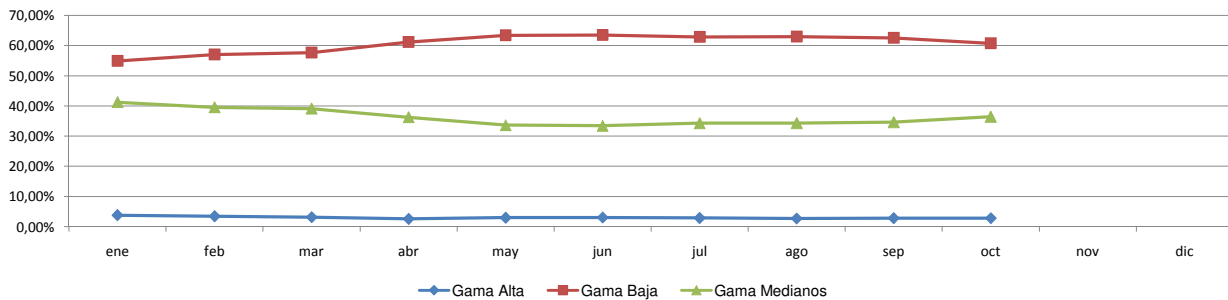




**Patentamientos por Ranking de Automoviles - Mercado Total**

Rank.	Ranking Por Modelos - Automoviles										
	Modelo	oct/09 (a)	oct/08 (b)	sep/09 (c)	Var a-b	Var a-c	Ac. 09	Part %	Ac. 08	Part %	Var 09-08
1	Chevrolet CORSA	1.748	2.940	2.590	-40,54%	-32,51%	24.721	6,97%	31.144	7,52%	-20,62%
2	Peugeot 207 COMPACT	1.709	1.720	2.159	-0,64%	-20,84%	21.428	6,04%	1.885	0,46%	1036,76%
3	Volkswagen GOL TREND	1.372	1.395	1.547	-1,65%	-11,31%	18.427	5,19%	2.236	0,54%	724,11%
4	Volkswagen GOL	2.199	3.226	2.177	-31,84%	1,01%	16.687	4,70%	38.359	9,26%	-56,50%
5	Ford ECOSPORT	1.444	1.750	1.510	-17,49%	-4,37%	15.774	4,45%	16.089	3,89%	-1,96%
6	Volkswagen SURAN	1.580	1.267	1.503	24,70%	5,12%	13.891	3,92%	14.259	3,44%	-2,58%
7	Renault CLIO	852	1.744	947	-51,15%	-10,03%	12.514	3,53%	15.840	3,82%	-21,00%
8	Ford KA	928	967	1.281	-4,03%	-27,56%	10.092	2,84%	8.576	2,07%	17,68%
9	Ford FIESTA	659	1.399	962	-52,89%	-31,50%	9.911	2,79%	12.836	3,10%	-22,79%
10	Fiat SIENA	1.036	1.383	976	-25,09%	6,15%	9.861	2,78%	12.683	3,06%	-22,25%
11	Volkswagen BORA	990	1.245	1.101	-20,48%	-10,08%	9.576	2,70%	11.615	2,80%	-17,55%
12	Renault SANDERO	1.245	252	1.570	394,05%	-20,70%	9.505	2,68%	3.898	0,94%	143,84%
13	Fiat PALIO	662	907	700	-27,01%	-5,43%	8.110	2,29%	10.945	2,64%	-25,90%
14	Volkswagen VOYAGE	717		806	N/D	-11,04%	7.732	2,18%		0,00%	N/D
15	Citroen C4	618	434	656	42,40%	-5,79%	7.607	2,14%	7.698	1,86%	-1,18%
16	Honda FIT	683	600	729	13,83%	-6,31%	7.570	2,13%	7.280	1,76%	3,98%
17	Peugeot 307	484	1.028	586	-52,92%	-17,41%	7.422	2,09%	14.896	3,60%	-50,17%
18	Volkswagen FOX/CROSSFOX	765	931	1.265	-17,83%	-39,53%	7.236	2,04%	11.983	2,89%	-39,61%
19	Fiat UNO	520	923	698	-43,66%	-25,50%	7.160	2,02%	10.660	2,57%	-32,83%
20	Toyota COROLLA	632	644	552	-1,86%	14,49%	6.734	1,90%	6.811	1,64%	-1,13%
21	Ford FOCUS	824	715	745	15,24%	10,60%	6.511	1,84%	8.729	2,11%	-25,41%
22	Chevrolet ASTRA	447	902	755	-50,44%	-40,79%	6.462	1,82%	10.337	2,50%	-37,49%
23	Chevrolet MERIVA	433	538	610	-19,52%	-29,02%	5.449	1,54%	6.844	1,65%	-20,38%
24	Chevrolet CORSA II	338	875	439	-61,37%	-23,01%	5.319	1,50%	8.471	2,05%	-37,21%
25	Ford FOCUS II	491	244	453	101,23%	8,39%	5.042	1,42%	383	0,09%	1216,45%
26	Renault KANGOO	462	570	495	-18,95%	-6,67%	4.739	1,34%	7.192	1,74%	-34,11%
27	Renault SYMBOL	522		526	N/D	-0,76%	4.620	1,30%		0,00%	N/D
28	Fiat PALIO WEEKEND	337	559	462	-39,71%	-27,06%	4.532	1,28%	3.665	0,89%	23,66%
29	Chevrolet AVEO	154		478	N/D	-67,78%	4.484	1,26%		0,00%	N/D
30	Renault MEGANE II	213	397	370	-46,35%	-42,43%	4.341	1,22%	4.875	1,18%	-10,95%
31	Renault LOGAN	475	331	730	43,50%	-34,93%	4.331	1,22%	4.416	1,07%	-1,92%
32	Fiat PUNTO	572	520	471	10,00%	21,44%	4.273	1,20%	6.988	1,69%	-38,85%
33	Volkswagen VENTO	382	372	484	2,69%	-21,07%	4.124	1,16%	4.929	1,19%	-16,33%
34	Citroen C3	268	349	468	-23,21%	-42,74%	3.886	1,10%	4.133	1,00%	-5,98%
35	Suzuki FUN	443	608	467	-27,14%	-5,14%	3.747	1,06%	6.309	1,52%	-40,61%
36	Chevrolet CORSA SW	251	361	322	-30,47%	-22,05%	3.699	1,04%	4.541	1,10%	-18,54%
37	Peugeot 206	287	602	192	-52,33%	49,48%	3.402	0,96%	25.639	6,19%	-86,73%
38	Renault MEGANE	27	698	20	-96,13%	35,00%	2.841	0,80%	10.325	2,49%	-72,48%
39	Honda CIVIC	159	480	242	-66,88%	-34,30%	2.708	0,76%	5.327	1,29%	-49,16%
40	Nissan TIIDA	294	198	279	48,48%	5,38%	2.704	0,76%	2.810	0,68%	-3,77%
41	Chevrolet SPARK	79	240	81	-67,08%	-2,47%	2.446	0,69%	260	0,06%	840,77%
42	Chevrolet VECTRA	168	243	244	-30,86%	-31,15%	2.302	0,65%	3.174	0,77%	-27,47%
43	Volkswagen GOL COUNTRY	137	321	164	-57,32%	-16,46%	2.031	0,57%	3.610	0,87%	-43,74%
44	Citroen PICASSO	140	173	208	-19,08%	-32,69%	1.909	0,54%	2.200	0,53%	-13,23%
45	Fiat IDEA	114	280	137	-59,29%	-16,79%	1.808	0,51%	3.993	0,96%	-54,72%
46	Citroen BERLINGO	62	194	83	-68,04%	-25,30%	1.384	0,39%	2.460	0,59%	-43,74%
47	Renault SCENIC	82	115	85	-28,70%	-3,53%	1.328	0,37%	2.118	0,51%	-37,30%
48	Fiat LINEA	172		154	N/D	11,69%	1.302	0,37%		0,00%	N/D
49	Peugeot PARTNER	109	214	145	-49,07%	-24,83%	1.262	0,36%	2.571	0,62%	-50,91%
50	Chevrolet ZAFIRA	86	161	84	-46,58%	2,38%	1.114	0,31%	1.853	0,45%	-39,88%
51	Otros	1.837	2.303	1.654	-20,23%	11,06%	18.723	5,28%	26.279	6,35%	-28,75%
<b>Total</b>		<b>31.208</b>	<b>38.318</b>	<b>36.362</b>			<b>354.781</b>	<b>1</b>	<b>414.124</b>		

**Autos - Participacion por Segmento**





**Patentamientos por Ranking de Livianos y Pesados - Mercado Total**

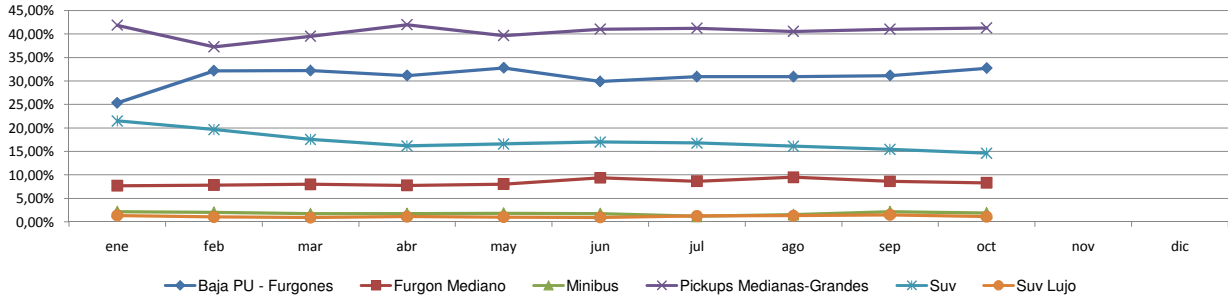
Rank.	Comercial Liviano										
	Modelo	oct/09 (a)	oct/08 (b)	sep/09 (c)	Var a-b	Var a-c	Ac. 09	Part %	Ac. 08	Part %	Var 09-08
1	Toyota HILUX	1.473	1.654	1.443	-10,94%	2,08%	16.624	20,58%	16.923	15,73%	-1,77%
2	Ford RANGER	827	955	1.110	-13,40%	-25,50%	8.627	10,68%	13.664	12,70%	-36,86%
3	Renault KANGOO FURGON	786	793	773	-0,88%	1,68%	7.568	9,37%	10.417	9,68%	-27,35%
4	Chevrolet S-10	417	655	456	-36,34%	-8,55%	5.107	6,32%	8.284	7,70%	-38,35%
5	Peugeot PARTNER FURGON	429	643	485	-33,28%	-11,55%	4.676	5,79%	6.407	5,95%	-27,02%
6	Fiat FIORINO	397	553	502	-28,21%	-20,92%	4.453	5,51%	5.686	5,28%	-21,68%
7	Volkswagen SAVEIRO	126	369	198	-65,85%	-36,36%	2.734	3,38%	3.545	3,29%	-22,88%
8	Honda CRV	203	372	235	-45,43%	-13,62%	2.683	3,32%	4.514	4,19%	-40,56%
9	Citroen BERLINGO FURGON	215	446	200	-51,79%	7,50%	2.632	3,26%	3.220	2,99%	-18,26%
10	Mercedes Benz SPRINTER	221	358	188	-38,27%	17,55%	2.316	2,87%	3.424	3,18%	-32,36%
11	Renault MASTER	105	217	264	-51,61%	-60,23%	2.186	2,71%	2.585	2,40%	-15,44%
12	Toyota HILUX SW4	140	168	162	-16,67%	-13,58%	1.789	2,21%	2.174	2,02%	-17,71%
13	Ford F 100	145	112	113	29,46%	28,32%	1.451	1,80%	2.032	1,89%	-28,59%
14	Suzuki GRAND VITARA	14	94	43	-85,11%	-67,44%	1.159	1,43%	979	0,91%	18,39%
15	Chery TIGGO	93	74	143	25,68%	-34,97%	1.119	1,39%	257	0,24%	335,41%
16	Fiat STRADA	129	23	144	460,87%	-10,42%	1.083	1,34%	751	0,70%	44,21%
17	Toyota RAV 4	66	77	59	-14,29%	11,86%	986	1,22%	616	0,57%	60,06%
18	Hyundai TUCSON	92	95	91	-3,16%	1,10%	863	1,07%	1.451	1,35%	-40,52%
19	Chevrolet CAPTIVA	50	96	60	-47,92%	-16,67%	728	0,90%	1.256	1,17%	-42,04%
20	Iveco DAILY	77	114	88	-32,46%	-12,50%	709	0,88%	1.238	1,15%	-42,73%
21	Otros	1.107	1.622	1.029	-31,75%	7,58%	11.300	13,99%	18.189	16,90%	-37,87%
<b>Total</b>		<b>7.112</b>	<b>9.490</b>	<b>7.786</b>			<b>80.793</b>	<b>1</b>	<b>107.612</b>		

Rank.	Comercial Pesado										
	Modelo	oct/09 (a)	oct/08 (b)	sep/09 (c)	Var a-b	Var a-c	Ac. 09	Part %	Ac. 08	Part %	Var 09-08
1	Ford CARGO 1722 E	85	113	85	-24,78%	0,00%	717	6,09%	1.426	6,88%	-49,72%
2	Mercedes Benz BMO 384	72	64	45	12,50%	60,00%	714	6,06%	143	0,69%	399,30%
3	Mercedes Benz L-1624	40	114	41	-64,91%	-2,44%	671	5,70%	877	4,23%	-23,49%
4	Iveco 170 E	53	119	108	-55,46%	-50,93%	616	5,23%	1.132	5,46%	-45,58%
5	Ford F-4000	54	67	49	-19,40%	10,20%	533	4,52%	915	4,41%	-41,75%
6	Mercedes Benz 1315	34	65	33	-47,69%	3,03%	530	4,50%	640	3,09%	-17,19%
7	Mercedes Benz ATEGO 1725	33	61	41	-45,90%	-19,51%	377	3,20%	626	3,02%	-39,78%
8	Mercedes Benz OF 1418	10	26	10	-61,54%	0,00%	353	3,00%	936	4,51%	-62,29%
9	Volkswagen 17220	29	69	27	-57,97%	7,41%	326	2,77%	842	4,06%	-61,28%
10	Mercedes Benz 710	30	42	30	-28,57%	0,00%	303	2,57%	535	2,58%	-43,36%
11	Mercedes Benz LS 1634	23	79	17	-70,89%	35,29%	297	2,52%	1.002	4,83%	-70,36%
12	Mercedes Benz OF 1722	17	100	36	-83,00%	-52,78%	283	2,40%	385	1,86%	-26,49%
13	Scania G340	24	57	24	-57,89%	0,00%	282	2,39%	345	1,66%	-18,26%
14	Agrale MT12	16	42	18	-61,90%	-11,11%	269	2,28%	271	1,31%	-0,74%
15	Iveco 450 E	56	61	59	-8,20%	-5,08%	245	2,08%	685	3,30%	-64,23%
16	Mercedes Benz L-1318	25	20	33	25,00%	-24,24%	227	1,93%	216	1,04%	5,09%
17	Ford CARGO 1832 E	39	44	26	-11,36%	50,00%	222	1,88%	585	2,82%	-62,05%
18	Mercedes Benz O-500	25	23	37	8,70%	-32,43%	215	1,83%	341	1,64%	-36,95%
19	Mercedes Benz L1634	33	25	38	32,00%	-13,16%	208	1,77%	404	1,95%	-48,51%
20	Renault PREMIUM	30	45	30	-33,33%	0,00%	188	1,60%	354	1,71%	-46,89%
21	Otros	441	832	438	-47,00%	0,68%	4.204	35,69%	8.080	38,96%	-47,97%
<b>Total</b>		<b>1.169</b>	<b>2.068</b>	<b>1.225</b>			<b>11.780</b>	<b>1</b>	<b>20.740</b>		



**Patentamientos por Ranking de Livianos y Pesados - Mercado Total**

**Comercial Liviano**



**Comercial Pesado**

