

**Patentamientos por Marcas - Mercado Total**

	may/10(a)	abr/10(b)	may/09(c)	may/08(d)	Var a-b	Var a-c	Var a-d	Ac. 10	Ac. 09	Var 10-09
<b>Automovil</b>	38.521	39.317	31.549	42.160	-2,02%	22,10%	-8,63%	219.803	183.115	20,04%
<b>Comercial Liviano</b>	10.087	9.330	6.978	11.072	8,11%	44,55%	-8,90%	51.612	42.211	22,27%
<b>Comercial Pesado</b>	1.323	1.407	947	2.223	-5,97%	39,70%	-40,49%	6.836	5.964	14,62%
<b>Otros Pesados</b>	784	893	673	1.354	-12,21%	16,49%	-42,10%	3.926	3.696	6,22%
<b>Total</b>	<b>50.715</b>	<b>50.947</b>	<b>40.147</b>	<b>56.809</b>	<b>-0,46%</b>	<b>26,32%</b>	<b>-10,73%</b>	<b>282.177</b>	<b>234.986</b>	<b>20,08%</b>
<b>Prom. diario</b>	2.669	2.547	2.113	2.705				2.794	2.374	
<b>Dias habiles</b>	19	20	19	21				101	99	

Patentamientos por origen		
	10-May	Ac. 10
Importados	0	143.645
Nacionales	0	87.819



■ Importados ■ Nacionales

**Patentamientos Mensuales**

	ene	feb	mar	abr	may	jun	jul	ago	sep	oct	nov	dic
2010	78.467	44.761	57.287	50.949	50.715							
2009	73.927	39.075	41.301	40.536	40.147	44.105	46.633	42.434	46.021	39.963	37.493	23.282
<b>Var% 10-09</b>	<b>6,14%</b>	<b>14,55%</b>	<b>38,71%</b>	<b>25,69%</b>	<b>26,32%</b>	<b>-100,00%</b>	<b>-100,00%</b>	<b>-100,00%</b>	<b>-100,00%</b>	<b>-100,00%</b>	<b>-100,00%</b>	<b>-100,00%</b>
2008	85.811	46.476	44.277	56.149	56.809	49.082	58.414	51.110	56.197	51.035	35.528	19.891
2007	82.552	38.841	47.379	41.626	47.231	42.139	50.181	54.285	48.857	49.497	40.640	24.528

**Patentamientos por Marcas - Totales**

Marca	may/10(a)		may/09(c)		abr/10(e)		2010		2010		2009		2009		Var
	Part %	Part %	Part %	Part %	Part %	Part %	ene - may	Part %	ene - may	Part %	Part %	2010-2009			
Volkswagen	10.928	21,86%	7.671	19,41%	11.650	23,25%	42,46%	-6,20%	55.787	20,03%	43.955	18,98%	26,92%		
Chevrolet	7.424	14,85%	5.780	14,62%	7.657	15,28%	28,44%	-3,04%	43.350	15,56%	32.631	14,09%	32,85%		
Ford	5.627	11,26%	4.775	12,08%	6.465	12,90%	17,84%	-12,96%	35.428	12,72%	29.901	12,91%	18,48%		
Renault	6.230	12,46%	4.957	12,54%	4.777	9,53%	25,68%	30,42%	31.698	11,38%	27.553	11,90%	15,04%		
Fiat	5.447	10,90%	3.938	9,96%	5.352	10,68%	38,32%	1,78%	30.095	10,81%	22.711	9,81%	32,51%		
Peugeot	4.056	8,11%	4.273	10,81%	3.640	7,26%	-5,08%	11,43%	21.889	7,86%	22.299	9,63%	-1,84%		
Toyota	2.546	5,09%	2.198	5,56%	2.542	5,07%	15,83%	0,16%	15.027	5,40%	14.220	6,14%	5,68%		
Citroen	1.344	2,69%	1.653	4,18%	1.538	3,07%	-18,69%	-12,61%	9.308	3,34%	10.017	4,33%	-7,08%		
Honda	1.426	2,85%	1.071	2,71%	1.490	2,97%	33,15%	-4,30%	9.116	3,27%	7.967	3,44%	14,42%		
Mercedes Benz	967	1,93%	770	1,95%	1.056	2,11%	25,58%	-8,43%	5.400	1,94%	4.908	2,12%	10,02%		
Suzuki	476	0,95%	516	1,31%	601	1,20%	-7,75%	-20,80%	3.808	1,37%	2.856	1,23%	33,33%		
Nissan	659	1,32%	296	0,75%	635	1,27%	122,64%	3,78%	3.401	1,22%	1.888	0,82%	80,14%		
Hyundai	585	1,17%	243	0,61%	468	0,93%	140,74%	25,00%	2.290	0,82%	1.685	0,73%	35,91%		
Audi	366	0,73%	196	0,50%	391	0,78%	86,73%	-6,39%	1.932	0,69%	1.462	0,63%	32,15%		
BMW	335	0,67%	171	0,43%	242	0,48%	95,91%	38,43%	1.733	0,62%	1.043	0,45%	66,16%		
Dodge	200	0,40%	61	0,15%	201	0,40%	227,87%	-0,50%	1.292	0,46%	640	0,28%	101,88%		
Kia	264	0,53%	158	0,40%	232	0,46%	67,09%	13,79%	1.193	0,43%	974	0,42%	22,48%		
Iveco	290	0,58%	180	0,46%	229	0,46%	61,11%	26,64%	1.190	0,43%	948	0,41%	25,53%		
Chery	100	0,20%	112	0,28%	118	0,24%	-10,71%	-15,25%	855	0,31%	467	0,20%	83,08%		
Mitsubishi	71	0,14%	46	0,12%	109	0,22%	54,35%	-34,86%	518	0,19%	334	0,14%	55,09%		
Scania	118	0,24%	56	0,14%	120	0,24%	110,71%	-1,67%	516	0,19%	531	0,23%	-2,82%		
Jeep	72	0,14%	102	0,26%	96	0,19%	-29,41%	-25,00%	502	0,18%	497	0,21%	1,01%		
Agrale	51	0,10%	46	0,12%	65	0,13%	10,87%	-21,54%	345	0,12%	291	0,13%	18,56%		
Subaru	82	0,16%	33	0,08%	60	0,12%	148,48%	36,67%	271	0,10%	154	0,07%	75,97%		
Randon	58	0,12%	47	0,12%	51	0,10%	23,40%	13,73%	267	0,10%	265	0,11%	0,75%		
Chrysler	45	0,09%	60	0,15%	40	0,08%	-25,00%	12,50%	261	0,09%	463	0,20%	-43,63%		
Volvo	44	0,09%	42	0,11%	84	0,17%	4,76%	-47,62%	257	0,09%	308	0,13%	-16,56%		
Mini	65	0,13%	23	0,06%	55	0,11%	182,61%	18,18%	231	0,08%	162	0,07%	42,59%		
Seat	48	0,10%	20	0,05%	67	0,13%	140,00%	-28,36%	183	0,07%	228	0,10%	-19,74%		
Puma de Tat	23	0,05%	2	0,01%	29	0,06%	1050,00%	-20,69%	164	0,06%	64	0,03%	156,25%		
Alfa Romeo	28	0,06%		0,00%	18	0,04%	N/D	55,56%	92	0,03%		0,00%	N/D		
Porsche	5	0,01%	5	0,01%	4	0,01%	0,00%	25,00%	44	0,02%	37	0,02%	18,92%		
Land Rover	2	0,00%	6	0,02%	7	0,01%	-66,67%	-71,43%	33	0,01%	45	0,02%	-26,67%		
MONTESUR	4	0,01%	5	0,01%	12	0,02%	-20,00%	-66,67%	31	0,01%	24	0,01%	29,17%		
Jaguar		0,00%	1	0,00%		0,00%	-100,00%	N/D	6	0,00%	1	0,00%	500,00%		
Mack		0,00%	4	0,01%	2	0,00%	-100,00%	-100,00%	5	0,00%	8	0,00%	-37,50%		
Ferrari	1	0,00%	1	0,00%	1	0,00%	0,00%	0,00%	4	0,00%	3	0,00%	33,33%		
Maserati		0,00%		0,00%	1	0,00%	N/D	-100,00%	1	0,00%		0,00%	N/D		
Materfer		0,00%	5	0,01%	1	0,00%	-100,00%	-100,00%	1	0,00%	26	0,01%	-96,15%		
Lexus		0,00%	1	0,00%		0,00%	-100,00%	N/D		0,00%	1	0,00%	-100,00%		
<b>Total</b>	<b>49.987</b>		<b>39.524</b>		<b>50.106</b>				<b>278.524</b>		<b>231.567</b>				

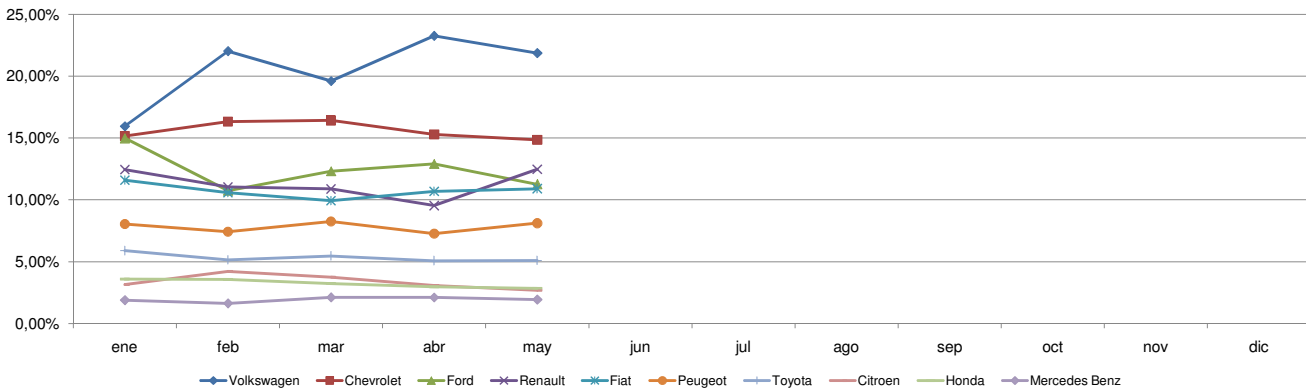


**Patentamientos por Marcas - Mercado Total**

Patentamientos por Marcas - Autos + Livianos										2010	2010	2009	2009	Var
Marca	may/10(a)	Part %	may/09(c)	Part %	abr/10(e)	Part %	Var a-c	Var a-e	ene - may	Part %	ene - may	Part %	2010-2009	
Volkswagen	10.830	22,28%	7.579	19,67%	11.493	23,63%	42,89%	-5,77%	55.158	20,32%	43.397	19,26%	27,10%	
Chevrolet	7.424	15,27%	5.780	15,00%	7.657	15,74%	28,44%	-3,04%	43.350	15,97%	32.631	14,48%	32,85%	
Ford	5.406	11,12%	4.594	11,92%	6.231	12,81%	17,68%	-13,24%	34.135	12,58%	28.882	12,82%	18,19%	
Renault	6.205	12,77%	4.945	12,84%	4.742	9,75%	25,48%	30,85%	31.536	11,62%	27.473	12,19%	14,79%	
Fiat	5.447	11,21%	3.938	10,22%	5.352	11,00%	38,32%	1,78%	30.095	11,09%	22.711	10,08%	32,51%	
Peugeot	4.056	8,34%	4.273	11,09%	3.640	7,48%	-5,08%	11,43%	21.889	8,07%	22.299	9,90%	-1,84%	
Toyota	2.546	5,24%	2.198	5,71%	2.542	5,23%	15,83%	0,16%	15.027	5,54%	14.220	6,31%	5,68%	
Citroen	1.344	2,77%	1.653	4,29%	1.538	3,16%	-18,69%	-12,61%	9.308	3,43%	10.017	4,45%	-7,08%	
Honda	1.426	2,93%	1.071	2,78%	1.490	3,06%	33,15%	-4,30%	9.116	3,36%	7.967	3,54%	14,42%	
Suzuki	476	0,98%	516	1,34%	601	1,24%	-7,75%	-20,80%	3.808	1,40%	2.856	1,27%	33,33%	
Nissan	659	1,36%	296	0,77%	635	1,31%	122,64%	3,78%	3.401	1,25%	1.888	0,84%	80,14%	
Mercedes Benz	460	0,95%	375	0,97%	506	1,04%	22,67%	-9,09%	2.759	1,02%	2.397	1,06%	15,10%	
Hyundai	554	1,14%	224	0,58%	450	0,93%	147,32%	23,11%	2.184	0,80%	1.611	0,71%	35,57%	
Audi	366	0,75%	196	0,51%	391	0,80%	86,73%	-6,39%	1.932	0,71%	1.462	0,65%	32,15%	
BMW	335	0,69%	171	0,44%	242	0,50%	95,91%	38,43%	1.733	0,64%	1.043	0,46%	66,16%	
Dodge	200	0,41%	61	0,16%	201	0,41%	227,87%	-0,50%	1.292	0,48%	640	0,28%	101,88%	
Kia	264	0,54%	158	0,41%	232	0,48%	67,09%	13,79%	1.193	0,44%	974	0,43%	22,48%	
Chery	100	0,21%	112	0,29%	118	0,24%	-10,71%	-15,25%	855	0,32%	467	0,21%	83,08%	
Mitsubishi	71	0,15%	46	0,12%	109	0,22%	54,35%	-34,86%	518	0,19%	334	0,15%	55,09%	
Jeep	72	0,15%	102	0,26%	96	0,20%	-29,41%	-25,00%	502	0,18%	497	0,22%	1,01%	
Iveco	61	0,13%	65	0,17%	82	0,17%	-6,15%	-25,61%	362	0,13%	348	0,15%	4,02%	
Subaru	82	0,17%	33	0,09%	60	0,12%	148,48%	36,67%	271	0,10%	154	0,07%	75,97%	
Chrysler	45	0,09%	60	0,16%	40	0,08%	-25,00%	12,50%	261	0,10%	463	0,21%	-43,63%	
Mini	65	0,13%	23	0,06%	55	0,11%	182,61%	18,18%	231	0,09%	162	0,07%	42,59%	
Seat	48	0,10%	20	0,05%	67	0,14%	140,00%	-28,36%	183	0,07%	228	0,10%	-19,74%	
Volvo	26	0,05%	24	0,06%	42	0,09%	8,33%	-38,10%	122	0,04%	115	0,05%	6,09%	
Alfa Romeo	28	0,06%		0,00%	18	0,04%	N/D	55,56%	92	0,03%		0,00%	N/D	
Porsche	5	0,01%	5	0,01%	4	0,01%	0,00%	25,00%	44	0,02%	37	0,02%	18,92%	
Land Rover	2	0,00%	6	0,02%	7	0,01%	-66,67%	-71,43%	33	0,01%	45	0,02%	-26,67%	
Jaguar		0,00%	1	0,00%		0,00%	-100,00%	N/D	6	0,00%	1	0,00%	500,00%	
Ferrari	1	0,00%	1	0,00%	1	0,00%	0,00%	0,00%	4	0,00%	3	0,00%	33,33%	
Maserati		0,00%		0,00%	1	0,00%	N/D	-100,00%	1	0,00%		0,00%	N/D	
Agrale		0,00%		0,00%		0,00%	N/D	N/D		0,00%	1	0,00%	-100,00%	
Lexus		0,00%	1	0,00%		0,00%	-100,00%	N/D		0,00%	1	0,00%	-100,00%	
<b>Total</b>	<b>48.604</b>		<b>38.527</b>		<b>48.643</b>				<b>271.401</b>		<b>225.324</b>			

Patentamientos por Marcas - Camiones + Buses										2010	2010	2009	2009	Var
Marca	may/10(a)	Part %	may/09(c)	Part %	abr/10(e)	Part %	Var a-c	Var a-e	ene - may	Part %	ene - may	Part %	2010-2009	
Mercedes Benz	507	36,66%	395	39,62%	550	37,59%	28,35%	-7,82%	2.641	37,08%	2.511	40,22%	5,18%	
Ford	221	15,98%	181	18,15%	234	15,99%	22,10%	-5,56%	1.293	18,15%	1.019	16,32%	26,89%	
Iveco	229	16,56%	115	11,53%	147	10,05%	99,13%	55,78%	828	11,62%	600	9,61%	38,00%	
Volkswagen	98	7,09%	92	9,23%	157	10,73%	6,52%	-37,58%	629	8,83%	558	8,94%	12,72%	
Scania	118	8,53%	56	5,62%	120	8,20%	110,71%	-1,67%	516	7,24%	531	8,51%	-2,82%	
Agrale	51	3,69%	46	4,61%	65	4,44%	10,87%	-21,54%	345	4,84%	290	4,65%	18,97%	
Randon	58	4,19%	47	4,71%	51	3,49%	23,40%	13,73%	267	3,75%	265	4,24%	0,75%	
Puma de Tat	23	1,66%	2	0,20%	29	1,98%	1050,00%	-20,69%	164	2,30%	64	1,03%	156,25%	
Renault	25	1,81%	12	1,20%	35	2,39%	108,33%	-28,57%	162	2,27%	80	1,28%	102,50%	
Volvo	18	1,30%	18	1,81%	42	2,87%	0,00%	-57,14%	135	1,90%	193	3,09%	-30,05%	
Hyundai	31	2,24%	19	1,91%	18	1,23%	63,16%	72,22%	106	1,49%	74	1,19%	43,24%	
MONTESUR	4	0,29%	5	0,50%	12	0,82%	-20,00%	-66,67%	31	0,44%	24	0,38%	29,17%	
Mack		0,00%	4	0,40%	2	0,14%	-100,00%	-100,00%	5	0,07%	8	0,13%	-37,50%	
Materfer		0,00%	5	0,50%	1	0,07%	-100,00%	-100,00%	1	0,01%	26	0,42%	-96,15%	
<b>Total</b>	<b>1.383</b>		<b>997</b>		<b>1.463</b>				<b>7.123</b>		<b>6.243</b>			

**Participacion por Marcas - Evolucion Mensual**

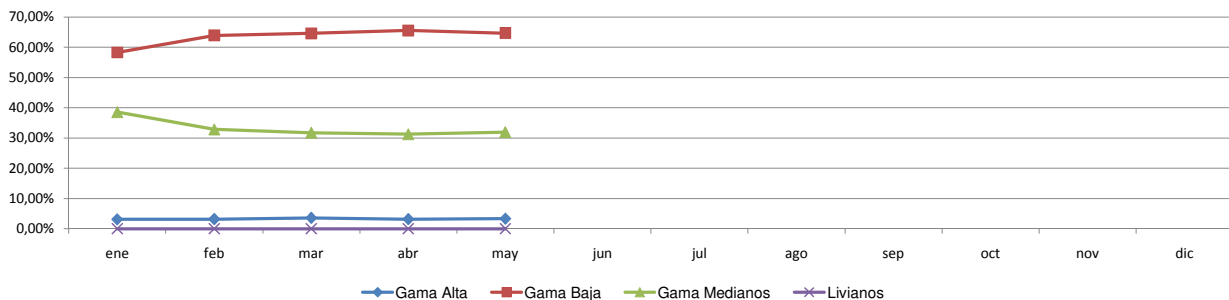




**Patentamientos por Ranking de Automoviles - Mercado Total**

Rank.	Modelo	Ranking Por Modelos - Automoviles									
		may/10 (a)	may/09 (b)	abr/10 (c)	Var a-b	Var a-c	Ac. 10	Part %	Ac. 09	Part %	Var 10-09
1	Chevrolet CORSA	1.856	2.713	2.719	-31,59%	-31,74%	13.702	6,23%	12.203	6,66%	12,28%
2	Volkswagen GOL TREND	2.264	1.891	2.894	19,73%	-21,77%	12.463	5,67%	10.115	5,52%	23,21%
3	Peugeot 207 COMPACT	2.436	2.022	2.222	20,47%	9,63%	11.888	5,41%	11.158	6,09%	6,54%
4	Volkswagen SURAN	2.247	1.206	2.363	86,32%	-4,91%	11.082	5,04%	7.055	3,85%	57,08%
5	Volkswagen GOL	1.552	1.321	1.714	17,49%	-9,45%	9.542	4,34%	7.508	4,10%	27,09%
6	Renault SANDERO	2.133	666	1.719	220,27%	24,08%	9.319	4,24%	3.691	2,02%	152,48%
7	Ford ECOSPORT	1.369	1.309	1.597	4,58%	-14,28%	8.866	4,03%	8.024	4,38%	10,49%
8	Ford KA	1.135	788	1.422	44,04%	-20,18%	6.203	2,82%	4.603	2,51%	34,76%
9	Fiat SIENA	1.058	855	989	23,74%	6,98%	5.749	2,62%	4.900	2,68%	17,33%
10	Volkswagen VOYAGE	1.002	797	1.223	25,72%	-18,07%	5.546	2,52%	3.583	1,96%	54,79%
11	Volkswagen BORA	723	604	542	19,70%	33,39%	5.514	2,51%	4.954	2,71%	11,30%
12	Chevrolet AGILE	892		903	N/D	-1,22%	5.388	2,45%		0,00%	N/D
13	Chevrolet AVEO	964	290	1.103	232,41%	-12,60%	5.180	2,36%	2.024	1,11%	155,93%
14	Ford FIESTA	536	827	810	-35,19%	-33,83%	5.132	2,33%	5.252	2,87%	-2,28%
15	Fiat PUNTO	783	351	832	123,08%	-5,89%	4.647	2,11%	2.018	1,10%	130,28%
16	Ford FOCUS II	768	343	888	123,91%	-13,51%	4.641	2,11%	2.476	1,35%	87,44%
17	Fiat PALIO	754	750	662	0,53%	13,90%	4.404	2,00%	4.401	2,40%	0,07%
18	Renault CLIO	792	1.082	424	-26,80%	86,79%	4.319	1,97%	6.952	3,80%	-37,87%
19	Fiat UNO	920	670	873	37,31%	5,38%	4.284	1,95%	3.922	2,14%	9,23%
20	Toyota COROLLA	717	619	698	15,83%	2,72%	4.234	1,93%	3.703	2,02%	14,34%
21	Honda FIT	580	601	619	-3,49%	-6,30%	4.029	1,83%	4.526	2,47%	-10,98%
22	Peugeot 307	527	777	615	-32,18%	-14,31%	3.868	1,76%	4.440	2,42%	-12,88%
23	Suzuki FUN	391	331	514	18,13%	-23,93%	3.368	1,53%	1.500	0,82%	124,53%
24	Citroen C4	540	636	581	-15,09%	-7,06%	3.332	1,52%	4.292	2,34%	-22,37%
25	Chevrolet MERIVA	423	477	490	-11,32%	-13,67%	3.204	1,46%	2.874	1,57%	11,48%
26	Renault SYMBOL	543	555	282	-2,16%	92,55%	3.192	1,45%	1.844	1,01%	73,10%
27	Fiat PALIO WEEKEND	443	401	591	10,47%	-25,04%	3.094	1,41%	2.457	1,34%	25,93%
28	Chevrolet CORSA II	425	560	526	-24,11%	-19,20%	2.840	1,29%	2.827	1,54%	0,46%
29	Volkswagen FOX/CROSSFOX	1.007	568	777	77,29%	29,60%	2.802	1,27%	3.234	1,77%	-13,36%
30	Renault MEGANE II	752	467	534	61,03%	40,82%	2.789	1,27%	2.240	1,22%	24,51%
31	Renault LOGAN	320	400	485	-20,00%	-34,02%	2.729	1,24%	1.729	0,94%	57,84%
32	Chevrolet ASTRA	323	319	358	1,25%	-9,78%	2.713	1,23%	4.004	2,19%	-32,24%
33	Honda CITY	365		453	N/D	-19,43%	2.668	1,21%		0,00%	N/D
34	Renault KANGOO	325	409	208	-20,54%	56,25%	2.544	1,16%	2.421	1,32%	5,08%
35	Nissan TIIDA	322	219	483	47,03%	-33,33%	2.533	1,15%	1.351	0,74%	87,49%
36	Citroen C3	285	369	421	-22,76%	-32,30%	2.456	1,12%	1.886	1,03%	30,22%
37	Volkswagen VENTO	427	427	415	0,00%	2,89%	2.350	1,07%	2.029	1,11%	15,82%
38	Peugeot 206	302	655	403	-53,89%	-25,06%	2.301	1,05%	1.941	1,06%	18,55%
39	Ford FOCUS	157	410	156	-61,71%	0,64%	1.702	0,77%	2.805	1,53%	-39,32%
40	Chevrolet VECTRA	301	143	295	110,49%	2,03%	1.698	0,77%	1.171	0,64%	45,00%
41	Chevrolet CORSA SW	167	365	346	-54,25%	-51,73%	1.574	0,72%	1.717	0,94%	-8,33%
42	Citroen PICASSO	244	185	261	31,89%	-6,51%	1.384	0,63%	1.151	0,63%	20,24%
43	Fiat IDEA	203	170	210	19,41%	-3,33%	1.278	0,58%	968	0,53%	32,02%
44	Fiat LINEA	141	99	129	42,42%	9,30%	1.058	0,48%	450	0,25%	135,11%
45	Honda CIVIC	148	207	136	-28,50%	8,82%	987	0,45%	1.651	0,90%	-40,22%
46	Chevrolet CLASSIC	961		1	N/D	96000,00%	962	0,44%		0,00%	N/D
47	Dodge JOURNEY	149	40	153	272,50%	-2,61%	942	0,43%	369	0,20%	155,28%
48	Chevrolet ZAFIRA	167	82	170	103,66%	-1,76%	920	0,42%	605	0,33%	52,07%
49	BMW 300 SERIES	131	86	109	52,33%	20,18%	877	0,40%	397	0,22%	120,91%
50	Renault SCENIC	276	170	164	62,35%	68,29%	813	0,37%	871	0,48%	-6,66%
51	Otros	2.272	2.317	1.831	-1,94%	24,09%	10.685	4,86%	16.822	9,19%	-36,48%
<b>Total</b>		<b>38.518</b>	<b>31.549</b>	<b>39.313</b>			<b>219.795</b>	<b>1</b>	<b>183.114</b>		

**Autos - Participacion por Segmento**





**Patentamientos por Ranking de Livianos y Pesados - Mercado Total**

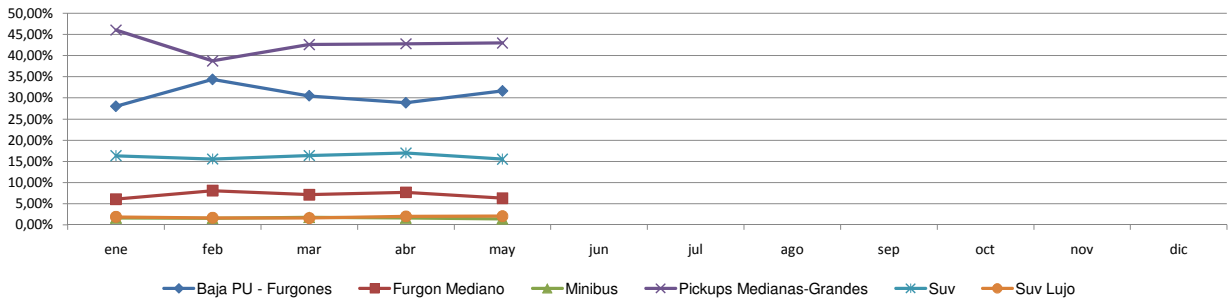
Rank.	Comercial Liviano										
	Modelo	may/10 (a)	may/09 (b)	abr/10 (c)	Var a-b	Var a-c	Ac. 10	Part %	Ac. 09	Part %	Var 10-09
1	Toyota HILUX	1.489	1.340	1.543	11,12%	-3,50%	8.949	17,34%	8.549	20,25%	4,68%
2	Ford RANGER	1.105	775	1.012	42,58%	9,19%	5.924	11,48%	4.288	10,16%	38,15%
3	Renault KANGOO FURGON	758	768	604	-1,30%	25,50%	3.935	7,63%	3.584	8,49%	9,79%
4	Chevrolet S-10	609	501	568	21,56%	7,22%	3.822	7,41%	2.713	6,43%	40,88%
5	Fiat FIORINO	729	415	661	75,66%	10,29%	3.426	6,64%	2.226	5,27%	53,91%
6	Peugeot PARTNER FURGON	459	407	240	12,78%	91,25%	2.300	4,46%	2.532	6,00%	-9,16%
7	Volkswagen SAVEIRO	552	273	626	102,20%	-11,82%	2.285	4,43%	1.476	3,50%	54,81%
8	Citroen BERLINGO FURGON	144	279	176	-48,39%	-18,18%	1.412	2,74%	1.654	3,92%	-14,63%
9	Mercedes Benz SPRINTER	272	201	274	35,32%	-0,73%	1.406	2,72%	1.223	2,90%	14,96%
10	Renault MASTER	245	204	240	20,10%	2,08%	1.352	2,62%	1.026	2,43%	31,77%
11	Volkswagen AMAROK	578		492	N/D	17,48%	1.307	2,53%		0,00%	N/D
12	Fiat STRADA	273	49	249	457,14%	9,64%	1.292	2,50%	491	1,16%	163,14%
13	Honda CRV	302	217	241	39,17%	25,31%	1.236	2,40%	1.486	3,52%	-16,82%
14	Toyota HILUX SW4	172	142	168	21,13%	2,38%	981	1,90%	1.039	2,46%	-5,58%
15	Ford F 100	196	70	148	180,00%	32,43%	904	1,75%	847	2,01%	6,73%
16	Chery TIGGO	94	112	118	-16,07%	-20,34%	849	1,65%	467	1,11%	81,80%
17	Hyundai TUCSON	99	72	149	37,50%	-33,56%	722	1,40%	463	1,10%	55,94%
18	Toyota RAV 4	123	63	108	95,24%	13,89%	703	1,36%	671	1,59%	4,77%
19	Nissan FRONTIER	255	35	94	628,57%	171,28%	515	1,00%	159	0,38%	223,90%
20	Fiat UNO	100	49	87	104,08%	14,94%	473	0,92%	319	0,76%	48,28%
21	Otros	1.532	1.006	1.532	52,29%	0,00%	7.813	15,14%	6.997	16,58%	11,66%
<b>Total</b>		<b>10.086</b>	<b>6.978</b>	<b>9.330</b>			<b>51.606</b>	<b>1</b>	<b>42.210</b>		

Rank.	Comercial Pesado										
	Modelo	may/10 (a)	may/09 (b)	abr/10 (c)	Var a-b	Var a-c	Ac. 10	Part %	Ac. 09	Part %	Var 10-09
1	Mercedes Benz 1418	78	79	104	-1,27%	-25,00%	593	8,68%	397	6,66%	49,37%
2	Ford CARGO 1722 E	62	61	81	1,64%	-23,46%	470	6,88%	330	5,54%	42,42%
3	Iveco 170 E	139	68	50	104,41%	178,00%	412	6,03%	289	4,85%	42,56%
4	Ford F-4000	41	45	75	-8,89%	-45,33%	307	4,50%	257	4,31%	19,46%
5	Mercedes Benz L-1624	44	63	74	-30,16%	-40,54%	287	4,20%	362	6,07%	-20,72%
6	Mercedes Benz BMO 368	57		66	N/D	-13,64%	273	4,00%		0,00%	N/D
7	Mercedes Benz 710	26	18	36	44,44%	-27,78%	206	3,02%	168	2,82%	22,62%
8	Volkswagen 17220	34	36	49	-5,56%	-30,61%	176	2,58%	188	3,15%	-6,38%
9	Iveco 450 E	39	12	40	225,00%	-2,50%	162	2,37%	79	1,33%	105,06%
10	Mercedes Benz ATEGO 1725	42	25	36	68,00%	16,67%	156	2,28%	177	2,97%	-11,86%
11	Mercedes Benz LS 1634	40	19	30	110,53%	33,33%	155	2,27%	161	2,70%	-3,73%
12	Scania G340	27	19	53	42,11%	-49,06%	151	2,21%	173	2,90%	-12,72%
13	Mercedes Benz OF 1722	38	4	47	850,00%	-19,15%	148	2,17%	90	1,51%	64,44%
14	Iveco 490 S	25	10	28	150,00%	-10,71%	128	1,87%	89	1,49%	43,82%
15	Ford CARGO 712	24	9	18	166,67%	33,33%	119	1,74%	73	1,22%	63,01%
16	Volkswagen 19320	21	11	23	90,91%	-8,70%	116	1,70%	63	1,06%	84,13%
17	Agrale MT12	12	29	23	-58,62%	-47,83%	113	1,65%	186	3,12%	-39,25%
18	Ford CARGO 1517 E	23	15	14	53,33%	64,29%	107	1,57%	92	1,54%	16,30%
19	Volkswagen 13180	13	8	26	62,50%	-50,00%	107	1,57%	90	1,51%	18,89%
20	Puma de Tat D12	16	2	15	700,00%	6,67%	106	1,55%	51	0,86%	107,84%
21	Otros	518	413	516	25,42%	0,39%	2.536	37,14%	2.645	44,38%	-4,12%
<b>Total</b>		<b>1.319</b>	<b>946</b>	<b>1.404</b>			<b>6.828</b>	<b>1</b>	<b>5.960</b>		

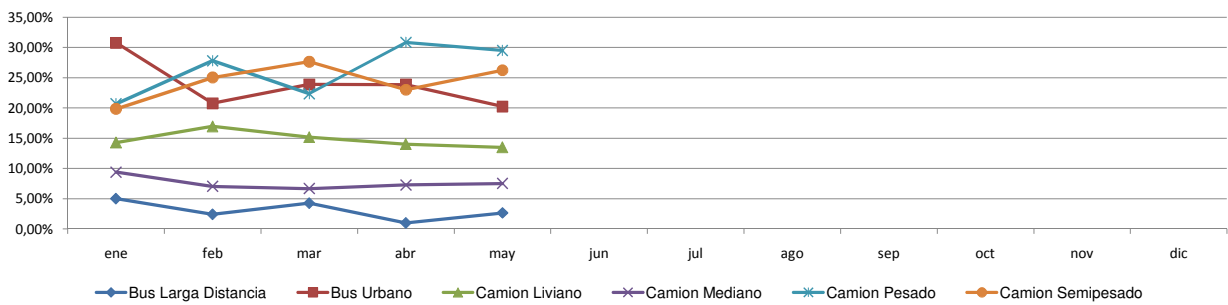


### Patentamientos por Ranking de Livianos y Pesados - Mercado Total

#### Comercial Liviano



#### Comercial Pesado





**Patentamientos por Provincias y Tipos -**

Distrito	Automovil+Comercial Liviano							Comercial Pesado+Otros Pesados							Mercado Total					
	may/10 (a)	may/09 (b)	abr/10 (c)	Var a-b	Var a-c	Ac. 10	Ac. 09	Var 10-09	may/10 (a)	may/09 (b)	abr/10 (c)	Var a-b	Var a-c	Ac. 10	Ac. 09	Var 10-09	Ac. 10	Ac. 09	Var 10-09	Part %
CAPITAL FEDERAL	9.176	6.932	8.828	32,37%	3,94%	47.349	38.154	24,10%	550	360	718	52,78%	-23,40%	2.991	2.127	40,62%	50.340	40.281	24,97%	17,84%
GRAN BUENOS AIRES	8.620	7.023	8.885	22,74%	-2,98%	48.381	38.679	25,08%	194	149	204	30,20%	-4,90%	1.043	885	17,85%	49.424	39.564	24,92%	17,52%
BUENOS AIRES	7.524	5.933	7.611	26,82%	-1,14%	41.402	34.819	18,91%	253	207	267	22,22%	-5,24%	1.251	1.147	9,07%	42.653	35.966	18,59%	15,12%
CORDOBA	4.855	4.082	4.848	18,94%	0,14%	27.518	24.094	14,21%	128	145	190	-11,72%	-32,63%	777	892	-12,89%	28.295	24.986	13,24%	10,03%
SANTA FE	3.774	3.307	3.788	14,12%	-0,37%	22.028	18.943	16,29%	156	114	187	36,84%	-16,58%	920	802	14,71%	22.948	19.745	16,22%	8,13%
MENDOZA	1.951	1.448	1.867	34,74%	4,50%	10.508	8.131	29,23%	89	60	103	48,33%	-13,59%	421	433	-2,77%	10.929	8.564	27,62%	3,87%
ENTRE RIOS	1.209	832	1.240	45,31%	-2,50%	6.927	5.429	27,59%	87	61	72	42,62%	20,83%	389	343	13,41%	7.316	5.772	26,75%	2,59%
TUCUMAN	1.102	727	1.107	51,58%	-0,45%	6.140	4.437	38,38%	82	52	63	57,69%	30,16%	279	281	-0,71%	6.419	4.718	36,05%	2,27%
CORRIENTES	973	654	1.088	48,78%	-10,57%	5.784	4.408	31,22%	107	50	81	114,00%	32,10%	432	392	10,20%	6.216	4.800	29,50%	2,20%
CHUBUT	984	900	915	9,33%	7,54%	5.727	5.765	-0,66%	33	53	29	-37,74%	13,79%	215	255	-15,69%	5.942	6.020	-1,30%	2,11%
SALTA	962	718	936	33,98%	2,78%	5.422	4.725	14,75%	73	72	58	1,39%	25,86%	354	374	-5,35%	5.776	5.099	13,28%	2,05%
NEUQUEN	890	760	883	17,11%	0,79%	5.320	4.694	13,34%	21	40	31	-47,50%	-32,26%	178	258	-31,01%	5.498	4.952	11,03%	1,95%
CHACO	612	625	594	-2,08%	3,03%	4.293	4.823	-10,99%	30	55	31	-45,45%	-3,23%	213	281	-24,20%	4.506	5.104	-11,72%	1,60%
SANTA CRUZ	766	640	702	19,69%	9,12%	4.230	4.037	4,78%	30	20	28	50,00%	7,14%	122	166	-26,51%	4.352	4.203	3,55%	1,54%
RIO NEGRO	685	611	767	12,11%	-10,69%	4.068	3.212	26,65%	17	16	18	6,25%	-5,56%	94	96	-2,08%	4.162	3.308	25,82%	1,47%
JUJUY	596	435	578	37,01%	3,11%	3.381	2.529	33,69%	123	49	75	151,02%	64,00%	384	240	60,00%	3.765	2.769	35,97%	1,33%
MISIONES	603	356	617	69,38%	-2,27%	3.586	2.657	34,96%	20	20	25	0,00%	-20,00%	112	104	7,69%	3.698	2.761	33,94%	1,31%
SAN JUAN	572	435	489	31,49%	16,97%	3.002	2.485	20,80%	26	13	24	100,00%	8,33%	141	103	36,89%	3.143	2.588	21,45%	1,11%
SANTIAGO DEL ESTERO	456	343	465	32,94%	-1,94%	2.746	2.253	21,88%	34	9	5	277,78%	580,00%	99	86	15,12%	2.845	2.339	21,63%	1,01%
LA PAMPA	435	431	478	0,93%	-9,00%	2.750	2.515	9,34%	9	20	13	-55,00%	-30,77%	65	90	-27,78%	2.815	2.605	8,06%	1,00%
FORMOSA	406	272	447	49,26%	-9,17%	2.571	1.905	34,96%	17	6	28	183,33%	-39,29%	98	76	28,95%	2.669	1.981	34,73%	0,95%
TIERRA DEL FUEGO	459	329	493	39,51%	-6,90%	2.434	1.833	32,79%	8	10	21	-20,00%	-61,90%	76	65	16,92%	2.510	1.898	32,24%	0,89%
SAN LUIS	427	310	407	37,74%	4,91%	2.308	1.828	26,26%	8	30	11	-73,33%	-27,27%	41	72	-43,06%	2.349	1.900	23,63%	0,83%
LA RIOJA	310	197	309	57,36%	0,32%	1.784	1.317	35,46%	10	4	14	150,00%	-28,57%	47	40	17,50%	1.831	1.357	34,93%	0,65%
CATAMARCA	261	227	305	14,98%	-14,43%	1.756	1.654	6,17%	3	5	6	-40,00%	-50,00%	23	52	-55,77%	1.779	1.706	4,28%	0,63%



Patentamientos por Provincias y Tipos -

