



Patentamientos por Marcas - Mercado Total

	mar/09(a)	feb/09(b)	mar/08(c)	mar/07(d)	Var a-b	Var a-c	Var a-d	Ac. 09	Ac. 08	Var 09-08
Automovil	31.179	30.313	32.581	35.733	2,86%	-4,30%	-12,74%	119.303	132.745	-10,13%
Comercial Liviano	7.381	6.947	8.749	8.268	6,25%	-15,64%	-10,73%	27.731	33.799	-17,95%
Comercial Pesado	1.122	1.100	1.748	1.904	2,00%	-35,81%	-41,07%	4.013	6.201	-35,28%
Otros Pesados	741	715	1.199	1.474	3,64%	-38,20%	-49,73%	2.379	3.820	-37,72%
Total	40.423	39.075	44.277	47.379	3,45%	-8,70%	-14,68%	153.426	176.565	-13,11%
Prom. diario	1.925	1.954	2.460	2.154				2.515	2.895	
Dias habiles	21	20	18	22				61	61	

Patentamientos por origen		
	09-Mar	Ac. 09
Importados	0	68.042
Nacionales	0	44.961



■ Importados ■ Nacionales

Patentamientos Mensuales

	ene	feb	mar	abr	may	jun	jul	ago	sep	oct	nov	dic
2009	73.928	39.075	40.423									
2008	85.811	46.477	44.277	56.149	56.809	49.082	58.414	51.110	56.197	51.036	35.528	19.891
Var% 09-08	-13,85%	-15,93%	-8,70%	-100,00%	-100,00%	-100,00%	-100,00%	-100,00%	-100,00%	-100,00%	-100,00%	-100,00%
2007	82.552	38.841	47.379	41.626	47.231	42.139	50.182	54.285	48.857	49.497	40.640	24.528
2006	65.984	32.425	40.400	34.249	38.284	36.566	36.948	39.123	39.642	36.009	33.252	17.725

Patentamientos por Marcas - Totales

Marca	2009		2009		2008		2008		2009-2008				
	ene - mar	Part %	ene - mar	Part %	ene - mar	Part %							
Volkswagen	7.473	18,84%	7.875	18,28%	7.612	19,85%	-5,10%	-1,83%	28.635	18,96%	28.489	16,49%	0,51%
Chevrolet	4.954	12,49%	6.211	14,42%	5.708	14,88%	-20,24%	-13,21%	21.082	13,96%	24.917	14,43%	-15,39%
Ford	5.494	13,85%	5.061	11,75%	4.540	11,84%	8,56%	21,01%	19.601	12,98%	21.997	12,73%	-10,89%
Renault	4.951	12,48%	5.587	12,97%	3.822	9,96%	-11,38%	29,54%	17.169	11,37%	21.687	12,56%	-20,83%
Peugeot	3.753	9,46%	4.207	9,77%	3.891	10,14%	-10,79%	-3,55%	14.371	9,52%	18.380	10,64%	-21,81%
Fiat	4.054	10,22%	4.879	11,33%	3.527	9,20%	-16,91%	14,94%	14.333	9,49%	18.664	10,81%	-23,21%
Toyota	2.513	6,34%	1.982	4,60%	2.300	6,00%	26,79%	9,26%	9.798	6,49%	8.580	4,97%	14,20%
Citroen	1.759	4,43%	1.772	4,11%	2.037	5,31%	-0,73%	-13,65%	6.522	4,32%	8.024	4,65%	-18,72%
Honda	1.323	3,34%	1.117	2,59%	1.587	4,14%	18,44%	-16,64%	5.705	3,78%	5.682	3,29%	0,40%
Mercedes Benz	873	2,20%	1.146	2,66%	767	2,00%	-23,82%	13,82%	3.377	2,24%	4.180	2,42%	-19,21%
Suzuki	505	1,27%	503	1,17%	379	0,99%	0,40%	33,25%	1.869	1,24%	1.952	1,13%	-4,25%
Nissan	294	0,74%	463	1,07%	359	0,94%	-36,50%	-18,11%	1.304	0,86%	1.659	0,96%	-21,40%
Hyundai	267	0,67%	280	0,65%	303	0,79%	-4,64%	-11,88%	1.188	0,79%	1.137	0,66%	4,49%
Audi	237	0,60%	273	0,63%	271	0,71%	-13,19%	-12,55%	1.072	0,71%	1.109	0,64%	-3,34%
BMW	135	0,34%	211	0,49%	170	0,44%	-36,02%	-20,59%	746	0,49%	1.000	0,58%	-25,40%
Kia	168	0,42%	263	0,61%	155	0,40%	-36,12%	8,39%	664	0,44%	821	0,48%	-19,12%
Iveco	171	0,43%	332	0,77%	162	0,42%	-48,49%	5,56%	590	0,39%	1.114	0,64%	-47,04%
Dodge	131	0,33%	101	0,23%	119	0,31%	29,70%	10,08%	494	0,33%	326	0,19%	51,53%
Scania	106	0,27%	138	0,32%	97	0,25%	-23,19%	9,28%	387	0,26%	453	0,26%	-14,57%
Chrysler	96	0,24%	126	0,29%	64	0,17%	-23,81%	50,00%	351	0,23%	400	0,23%	-12,25%
Jeep	70	0,18%	125	0,29%	81	0,21%	-44,00%	-13,58%	327	0,22%	498	0,29%	-34,34%
Chery	76	0,19%		0,00%	68	0,18%	N/D	11,76%	263	0,17%		0,00%	N/D
Mitsubishi	47	0,12%	112	0,26%	75	0,20%	-58,04%	-37,33%	245	0,16%	507	0,29%	-51,68%
Volvo	61	0,15%	110	0,26%	65	0,17%	-44,55%	-6,15%	236	0,16%	340	0,20%	-30,59%
Agrale	49	0,12%	27	0,06%	71	0,19%	81,48%	-30,99%	197	0,13%	147	0,09%	34,01%
Seat	29	0,07%	30	0,07%	36	0,09%	-3,33%	-19,44%	179	0,12%	94	0,05%	90,43%
Mini	29	0,07%	35	0,08%	26	0,07%	-17,14%	11,54%	115	0,08%	146	0,08%	-21,23%
Subaru	19	0,05%	44	0,10%	33	0,09%	-56,82%	-42,82%	97	0,06%	163	0,09%	-40,49%
Puma de Tat	10	0,03%	30	0,07%	18	0,05%	-66,67%	-44,44%	47	0,03%	103	0,06%	-54,37%
Land Rover	8	0,02%	20	0,05%	9	0,02%	-60,00%	-11,11%	31	0,02%	68	0,04%	-54,41%
Porsche	7	0,02%	13	0,03%	5	0,01%	-46,15%	40,00%	25	0,02%	72	0,04%	-65,28%
Alfa Romeo	1	0,00%	4	0,01%		0,00%	-75,00%	N/D	1	0,00%	20	0,01%	-95,00%
Ferrari		0,00%		0,00%		0,00%	N/D	N/D	1	0,00%	1	0,00%	0,00%
Hummer		0,00%		0,00%		0,00%	N/D	N/D		0,00%	1	0,00%	-100,00%
Jaguar		0,00%		0,00%		0,00%	N/D	N/D		0,00%	1	0,00%	-100,00%
Lamborghini		0,00%		0,00%		0,00%	N/D	N/D		0,00%	1	0,00%	-100,00%
Total	39.663		43.077		38.357				151.022		172.733		

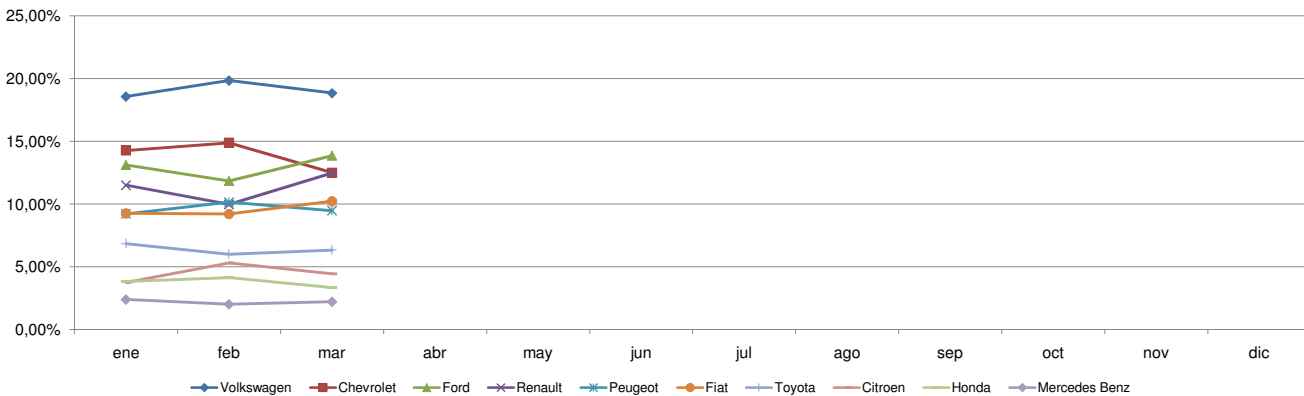


Patentamientos por Marcas - Mercado Total

Patentamientos por Marcas - Autos + Livianos							2009	2009	2008	2008	Var		
Marca	mar/09(a)	Part %	mar/08(c)	Part %	feb/09(e)	Part %	Var a-c	Var a-e	ene - mar	Part %	ene - mar	Part %	2009-2008
Volkswagen	7.370	19,11%	7.624	18,45%	7.509	20,15%	-3,33%	-1,85%	28.274	19,23%	27.662	16,61%	2,21%
Chevrolet	4.954	12,85%	6.211	15,03%	5.708	15,32%	-20,24%	-13,21%	21.082	14,34%	24.917	14,96%	-15,39%
Ford	5.319	13,80%	4.673	11,31%	4.334	11,63%	13,82%	22,73%	18.960	12,90%	20.733	12,45%	-8,55%
Renault	4.932	12,79%	5.541	13,41%	3.806	10,21%	-10,99%	29,58%	17.111	11,64%	21.539	12,93%	-20,56%
Peugeot	3.753	9,73%	4.207	10,18%	3.891	10,44%	-10,79%	-3,55%	14.371	9,77%	18.380	11,04%	-21,81%
Fiat	4.054	10,51%	4.879	11,80%	3.527	9,47%	-16,91%	14,94%	14.333	9,75%	18.664	11,21%	-23,21%
Toyota	2.513	6,52%	1.982	4,80%	2.300	6,17%	26,79%	9,26%	9.798	6,66%	8.580	5,15%	14,20%
Citroen	1.759	4,56%	1.772	4,29%	2.037	5,47%	-0,73%	-13,65%	6.522	4,44%	8.024	4,82%	-18,72%
Honda	1.323	3,43%	1.117	2,70%	1.587	4,26%	18,44%	-16,64%	5.705	3,88%	5.682	3,41%	0,40%
Suzuki	505	1,31%	503	1,22%	379	1,02%	0,40%	33,25%	1.869	1,27%	1.952	1,17%	-4,25%
Mercedes Benz	396	1,03%	569	1,38%	346	0,93%	-30,40%	14,45%	1.670	1,14%	1.918	1,15%	-12,93%
Nissan	294	0,76%	463	1,12%	359	0,96%	-36,50%	-18,11%	1.304	0,89%	1.659	1,00%	-21,40%
Hyundai	253	0,66%	274	0,66%	287	0,77%	-7,66%	-11,85%	1.147	0,78%	1.131	0,68%	1,41%
Audi	237	0,61%	273	0,66%	271	0,73%	-13,19%	-12,55%	1.072	0,73%	1.109	0,67%	-3,34%
BMW	135	0,35%	211	0,51%	170	0,46%	-36,02%	-20,59%	746	0,51%	1.000	0,60%	-25,40%
Kia	168	0,44%	263	0,64%	155	0,42%	0,42%	8,39%	664	0,45%	821	0,49%	-19,12%
Dodge	131	0,34%	101	0,24%	119	0,32%	29,70%	10,08%	494	0,34%	326	0,20%	51,53%
Chrysler	96	0,25%	126	0,30%	64	0,17%	-23,81%	50,00%	351	0,24%	400	0,24%	-12,25%
Jeep	70	0,18%	125	0,30%	81	0,22%	-44,00%	-13,58%	327	0,22%	498	0,30%	-34,34%
Chery	76	0,20%		0,00%	68	0,18%	N/D	11,76%	263	0,18%		0,00%	N/D
Mitsubishi	47	0,12%	112	0,27%	75	0,20%	-58,04%	-37,33%	245	0,17%	507	0,30%	-51,68%
Iveco	61	0,16%	111	0,27%	49	0,13%	-45,05%	24,49%	197	0,13%	334	0,20%	-41,02%
Seat	29	0,08%	30	0,07%	36	0,10%	-3,33%	-19,44%	179	0,12%	94	0,06%	90,43%
Mini	29	0,08%	35	0,08%	26	0,07%	-17,14%	11,54%	115	0,08%	146	0,09%	-21,23%
Subaru	19	0,05%	44	0,11%	33	0,09%	-56,82%	-42,42%	97	0,07%	163	0,10%	-40,49%
Volvo	18	0,05%	47	0,11%	27	0,07%	-61,70%	-33,33%	75	0,05%	141	0,08%	-46,81%
Land Rover	8	0,02%	20	0,05%	9	0,02%	-60,00%	-11,11%	31	0,02%	68	0,04%	-54,41%
Porsche	7	0,02%	13	0,03%	5	0,01%	-46,15%	40,00%	25	0,02%	72	0,04%	-65,28%
Agrale		0,00%		0,00%	1	0,00%	N/D	-100,00%	1	0,00%		0,00%	N/D
Alfa Romeo	1	0,00%	4	0,01%		0,00%	-75,00%	N/D	1	0,00%	20	0,01%	-95,00%
Ferrari		0,00%		0,00%		0,00%	N/D	N/D	1	0,00%	1	0,00%	0,00%
Hummer		0,00%		0,00%		0,00%	N/D	N/D		0,00%	1	0,00%	-100,00%
Jaguar		0,00%		0,00%		0,00%	N/D	N/D		0,00%	1	0,00%	-100,00%
Lamborghini		0,00%		0,00%		0,00%	N/D	N/D		0,00%	1	0,00%	-100,00%
Total	38.557		41.330		37.259				147.030		166.544		

Patentamientos por Marcas - Camiones + Buses							2009	2009	2008	2008	Var		
Marca	mar/09(a)	Part %	mar/08(c)	Part %	feb/09(e)	Part %	Var a-c	Var a-e	ene - mar	Part %	ene - mar	Part %	2009-2008
Mercedes Benz	477	43,13%	577	33,03%	421	38,34%	-17,33%	13,30%	1.707	42,76%	2.262	36,55%	-24,54%
Ford	175	15,82%	388	22,21%	206	18,76%	-54,90%	-15,05%	641	16,06%	1.264	20,42%	-49,29%
Iveco	110	9,95%	221	12,65%	113	10,29%	-50,23%	-2,65%	393	9,84%	780	12,60%	-49,62%
Scania	106	9,58%	138	7,90%	97	8,83%	-23,19%	9,28%	387	9,69%	453	7,32%	-14,57%
Volkswagen	103	9,31%	251	14,37%	103	9,38%	-58,96%	0,00%	361	9,04%	827	13,36%	-56,35%
Agrale	49	4,43%	27	1,55%	70	6,38%	81,48%	-30,00%	196	4,91%	147	2,38%	33,33%
Volvo	43	3,89%	63	3,61%	38	3,46%	-31,75%	13,16%	161	4,03%	199	3,22%	-19,10%
Renault	19	1,72%	46	2,63%	16	1,46%	-58,70%	18,75%	58	1,45%	148	2,39%	-60,81%
Puma de Tat	10	0,90%	30	1,72%	18	1,64%	-66,67%	-44,44%	47	1,18%	103	1,66%	-54,37%
Hyundai	14	1,27%	6	0,34%	16	1,46%	133,33%	-12,50%	41	1,03%	6	0,10%	583,33%
Total	1.106		1.747		1.098				3.992		6.189		

Participacion por Marcas - Evolucion Mensual

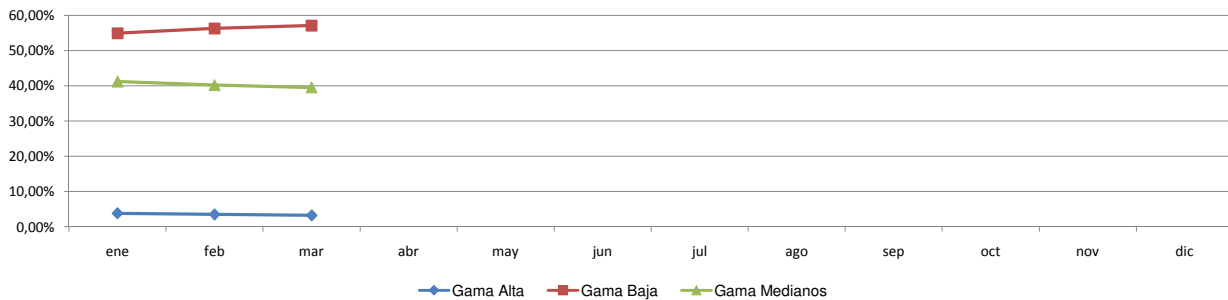




Patentamientos por Ranking de Automoviles - Mercado Total

Rank.	Ranking Por Modelos - Automoviles										
	Modelo	mar/09 (a)	mar/08 (b)	feb/09 (c)	Var a-b	Var a-c	Ac. 09	Part %	Ac. 08	Part %	Var 09-08
1	Chevrolet CORSA	1.603	2.760	2.110	-41,92%	-24,03%	7.359	6,17%	10.664	8,03%	-30,99%
2	Peugeot 207 COMPACT	1.775		2.044	N/D	-13,16%	7.349	6,16%		0,00%	N/D
3	Volkswagen GOL TREND	1.799		1.753	N/D	2,62%	6.176	5,18%		0,00%	N/D
4	Ford ECOSPORT	1.329	1.153	1.205	15,26%	10,29%	5.428	4,55%	5.435	4,09%	-0,13%
5	Volkswagen GOL	1.139	3.162	1.227	-63,98%	-7,17%	4.928	4,13%	10.165	7,66%	-51,52%
6	Renault CLIO	733	748	949	-2,01%	-22,76%	4.667	3,91%	4.062	3,06%	14,89%
7	Volkswagen SURAN	1.286	973	1.181	32,17%	8,89%	4.588	3,85%	4.721	3,56%	-2,82%
8	Volkswagen BORA	614	710	939	-13,52%	-34,61%	3.862	3,24%	3.109	2,34%	24,22%
9	Ford FIESTA	1.002	916	806	9,39%	24,32%	3.476	2,91%	3.941	2,97%	-11,80%
10	Honda FIT	852	489	973	74,23%	-12,44%	3.221	2,70%	2.527	1,90%	27,46%
11	Chevrolet ASTRA	669	755	1.095	-11,39%	-38,90%	3.209	2,69%	3.129	2,36%	2,56%
12	Fiat SIENA	940	1.097	676	-14,31%	39,05%	3.080	2,58%	3.648	2,75%	-15,57%
13	Peugeot 307	751	1.189	721	-36,84%	4,16%	3.000	2,51%	5.925	4,46%	-49,37%
14	Ford KA	996	275	793	262,18%	25,60%	2.961	2,48%	1.685	1,27%	75,73%
15	Citroen C4	737	609	822	21,02%	-10,34%	2.875	2,41%	3.325	2,50%	-13,53%
16	Fiat PALIO	796	806	735	-1,24%	8,30%	2.750	2,31%	3.321	2,50%	-17,19%
17	Toyota COROLLA	662	218	611	203,67%	8,35%	2.626	2,20%	1.540	1,16%	70,52%
18	Fiat UNO	713	894	683	-20,25%	4,39%	2.529	2,12%	3.721	2,80%	-32,03%
19	Renault SANDERO	667	654	474	1,99%	40,72%	2.263	1,90%	1.212	0,91%	86,72%
20	Volkswagen FOX/CROSSFOX	578	1.098	595	-47,36%	-2,86%	2.127	1,78%	3.776	2,84%	-43,67%
21	Volkswagen VOYAGE	783		613	N/D	27,73%	2.021	1,69%		0,00%	N/D
22	Renault MEGANE	772	856	478	-9,81%	61,51%	2.018	1,69%	4.328	3,26%	-53,37%
23	Chevrolet CORSA II	419	574	400	-27,00%	4,75%	1.877	1,57%	2.620	1,97%	-28,36%
24	Ford FOCUS	524	811	381	-35,39%	37,53%	1.811	1,52%	3.383	2,55%	-46,47%
25	Chevrolet MERIVA	399	636	435	-37,26%	-8,28%	1.808	1,52%	2.324	1,75%	-22,20%
26	Fiat PALIO WEEKEND	361	330	368	9,39%	-1,90%	1.662	1,39%	1.539	1,16%	7,99%
27	Ford FOCUS II	453		344	N/D	31,69%	1.612	1,35%		0,00%	N/D
28	Renault KANGOO	406	611	328	-33,55%	23,78%	1.552	1,30%	2.901	2,19%	-46,50%
29	Renault MEGANE II	411	448	308	-8,26%	33,44%	1.360	1,14%	1.849	1,39%	-26,45%
30	Chevrolet AVEO	438		326	N/D	34,36%	1.348	1,13%		0,00%	N/D
31	Fiat PUNTO	341	645	312	-47,13%	9,29%	1.300	1,09%	2.539	1,91%	-48,80%
32	Chevrolet SPARK	454		301	N/D	50,83%	1.230	1,03%		0,00%	N/D
33	Volkswagen VENTO	308	343	286	-10,20%	7,69%	1.218	1,02%	1.726	1,30%	-29,43%
34	Honda CIVIC	201	401	290	-49,88%	-30,69%	1.185	0,99%	1.821	1,37%	-34,93%
35	Citroen C3	278	455	409	-38,90%	-32,03%	1.136	0,95%	1.953	1,47%	-41,83%
36	Suzuki FUN	238	344	147	-30,81%	61,90%	980	0,82%	1.328	1,00%	-26,20%
37	Peugeot 206	268	2.192	294	-87,77%	-8,84%	951	0,80%	8.816	6,64%	-89,21%
38	Chevrolet CORSA SW	192	308	267	-37,66%	-28,09%	939	0,79%	1.549	1,17%	-39,38%
39	Nissan TIIDA	218	191	258	14,14%	-15,50%	913	0,77%	666	0,50%	37,09%
40	Renault LOGAN	383	615	146	-37,72%	162,33%	877	0,74%	1.546	1,16%	-43,27%
41	Volkswagen GOL COUNTRY	214	365	233	-41,37%	-8,15%	829	0,69%	828	0,62%	0,12%
42	Renault SYMBOL	481		273	N/D	76,19%	792	0,66%		0,00%	N/D
43	Chevrolet VECTRA	181	299	195	-39,46%	-7,18%	785	0,66%	886	0,67%	-11,40%
44	Citroen PICASSO	209	209	185	0,00%	12,97%	739	0,62%	828	0,62%	-10,75%
45	Fiat IDEA	158	343	131	-53,94%	20,61%	654	0,55%	1.472	1,11%	-55,57%
46	Peugeot PARTNER	108	184	151	-41,30%	-28,48%	547	0,46%	991	0,75%	-44,80%
47	Renault SCENIC	164	236	94	-30,51%	74,47%	510	0,43%	842	0,63%	-39,43%
48	Citroen BERLINGO	139	226	159	-38,50%	-12,58%	490	0,41%	899	0,68%	-45,49%
49	Audi A4	99	70	113	41,43%	-12,39%	485	0,41%	352	0,27%	37,78%
50	Mercedes Benz CLASE C	104	174	88	-40,23%	18,18%	476	0,40%	502	0,38%	-5,18%
51	Otros	1.832	2.209	1.607	-17,07%	14,00%	6.721	5,63%	8.351	6,29%	-19,52%
Total		31.177	32.581	30.312			119.300	1	132.745		

Autos - Participacion por Segmento





Patentamientos por Ranking de Livianos y Pesados - Mercado Total

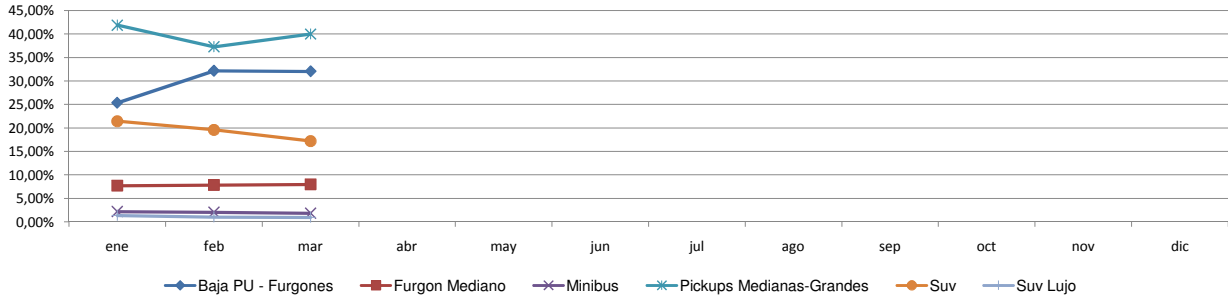
Rank.	Comercial Liviano										
	Modelo	mar/09 (a)	mar/08 (b)	feb/09 (c)	Var a-b	Var a-c	Ac. 09	Part %	Ac. 08	Part %	Var 09-08
1	Toyota HILUX	1.539	1.358	1.354	13,33%	13,66%	5.683	20,49%	5.451	16,13%	4,26%
2	Ford RANGER	629	1.194	529	-47,32%	18,90%	2.600	9,38%	4.931	14,59%	-47,27%
3	Renault KANGOO FURGON	589	930	486	-36,67%	21,19%	2.100	7,57%	3.459	10,23%	-39,29%
4	Chevrolet S-10	423	620	404	-31,77%	4,70%	1.734	6,25%	2.657	7,86%	-34,74%
5	Peugeot PARTNER FURGON	534	411	460	29,93%	16,09%	1.622	5,85%	1.822	5,39%	-10,98%
6	Fiat FIORINO	390	476	399	-18,07%	-2,26%	1.379	4,97%	1.375	4,07%	0,29%
7	Citroen BERLINGO FURGON	347	258	410	34,50%	-15,37%	1.110	4,00%	953	2,82%	16,47%
8	Honda CRV	231	202	260	14,36%	-11,15%	1.070	3,86%	1.261	3,73%	-15,15%
9	Volkswagen SAVEIRO	266	307	264	-13,36%	0,76%	970	3,50%	766	2,27%	26,63%
10	Mercedes Benz SPRINTER	190	299	185	-36,45%	2,70%	829	2,99%	1.080	3,20%	-23,24%
11	Toyota HILUX SW4	161	204	188	-21,08%	-14,36%	772	2,78%	821	2,43%	-5,97%
12	Ford F 100	268	186	176	44,09%	52,27%	669	2,41%	825	2,44%	-18,91%
13	Renault MASTER	183	319	188	-42,63%	-2,66%	664	2,39%	967	2,86%	-31,33%
14	Toyota RAV 4	101	44	112	129,55%	-9,82%	508	1,83%	178	0,53%	185,39%
15	Fiat STRADA	101	90	102	12,22%	-0,98%	367	1,32%	400	1,18%	-8,25%
16	Hyundai TUCSON	67	111	93	-39,64%	-27,96%	331	1,19%	386	1,14%	-14,25%
17	Hyundai SANTA FE	53	66	57	-19,70%	-7,02%	270	0,97%	353	1,04%	-23,51%
18	Suzuki GRAND VITARA JIII	82	45	61	82,22%	34,43%	264	0,95%	176	0,52%	50,00%
19	Chery TIGGO	76		68	N/D	11,76%	263	0,95%		0,00%	N/D
20	Kia K2700	89	19	70	368,42%	27,14%	257	0,93%	151	0,45%	70,20%
21	Otros	1.061	1.610	1.081	-34,10%	-1,85%	4.268	15,39%	5.787	17,12%	-26,25%
Total		7.380	8.749	6.947			27.730	1	33.799		

Rank.	Comercial Pesado										
	Modelo	mar/09 (a)	mar/08 (b)	feb/09 (c)	Var a-b	Var a-c	Ac. 09	Part %	Ac. 08	Part %	Var 09-08
1	Mercedes Benz BMO 384	109		35	N/D	211,43%	276	6,91%		0,00%	N/D
2	Mercedes Benz L-1624	64	88	77	-27,27%	-16,88%	245	6,14%	307	4,96%	-20,20%
3	Ford CARGO 1722 E	63	139	75	-54,68%	-16,00%	213	5,34%	485	7,84%	-56,08%
4	Iveco 170 E	53	69	55	-23,19%	-3,64%	171	4,28%	270	4,36%	-36,67%
5	Ford F-4000	47	76	50	-38,16%	-6,00%	164	4,11%	258	4,17%	-36,43%
6	Mercedes Benz OF 1418	91	84	26	8,33%	250,00%	154	3,86%	291	4,70%	-47,08%
7	Mercedes Benz 1315	26	21	38	23,81%	-31,58%	146	3,66%	185	2,99%	-21,08%
8	Mercedes Benz ATEGO 1725	20	42	45	-52,38%	-55,56%	132	3,31%	141	2,28%	-6,38%
9	Agrale MT12	26	12	52	116,67%	-50,00%	132	3,31%	80	1,29%	65,00%
10	Scania G340	31	20	27	55,00%	14,81%	127	3,18%	23	0,37%	452,17%
11	Volkswagen 17220	30	88	34	-65,91%	-11,76%	122	3,06%	253	4,09%	-51,78%
12	Mercedes Benz 710	28	27	25	3,70%	12,00%	116	2,91%	161	2,60%	-27,95%
13	Mercedes Benz LS 1634	17	122	28	-86,07%	-39,29%	114	2,86%	398	6,43%	-71,36%
14	Mercedes Benz OF 1722	33	15	30	120,00%	10,00%	80	2,00%	80	1,29%	0,00%
15	Mercedes Benz O-500	13	22	18	-40,91%	-27,78%	72	1,80%	120	1,94%	-40,00%
16	Mercedes Benz L1634	14	49	18	-71,43%	-22,22%	69	1,73%	154	2,49%	-55,19%
17	Volvo FH 400	14	33	18	-57,58%	-22,22%	69	1,73%	87	1,41%	-20,69%
18	Volkswagen 13180	20	41	16	-51,22%	25,00%	66	1,65%	166	2,68%	-60,24%
19	Ford CARGO 1517 E	16	31	18	-48,39%	-11,11%	65	1,63%	53	0,86%	22,64%
20	Ford CARGO 915 E	9	15	31	-40,00%	-70,97%	62	1,55%	42	0,68%	47,62%
21	Otros	382	753	382	-49,27%	0,00%	1.397	34,99%	2.635	42,58%	-46,98%
Total		1.106	1.747	1.098			3.992	1	6.189		

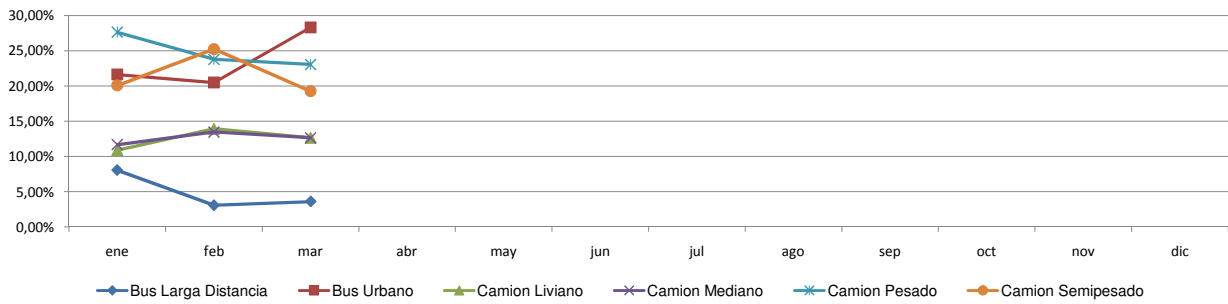


Patentamientos por Ranking de Livianos y Pesados - Mercado Total

Comercial Liviano



Comercial Pesado





Patentamientos por Provincias y Tipos -

Distrito	Automovil+Comercial Liviano							Comercial Pesado+Otros Pesados							Mercado Total					
	mar/09 (a)	mar/08 (b)	feb/09 (c)	Var a-b	Var a-c	Ac. 09	Ac. 08	Var 09-08	mar/09 (a)	mar/08 (b)	feb/09 (c)	Var a-b	Var a-c	Ac. 09	Ac. 08	Var 09-08	Ac. 09	Ac. 08	Var 09-08	Part %
CAPITAL FEDERAL	6.557	7.676	6.533	-14,58%	0,37%	24.137	28.254	-14,57%	408	634	417	-35,65%	-2,16%	1.402	2.260	-37,96%	25.539	30.514	-16,30%	16,65%
GRAN BUENOS AIRES	6.484	6.665	6.361	-2,72%	1,93%	24.294	25.328	-4,08%	163	261	150	-37,55%	8,67%	564	869	-35,10%	24.858	26.197	-5,11%	16,20%
BUENOS AIRES	6.187	6.312	6.024	-1,98%	2,71%	22.773	25.368	-10,23%	201	420	201	-52,14%	0,00%	768	1.334	-42,43%	23.542	26.702	-11,83%	15,34%
CORDOBA	4.003	4.239	3.874	-5,57%	3,33%	15.728	18.554	-15,23%	192	344	176	-44,19%	9,09%	578	1.002	-42,32%	16.306	19.556	-16,62%	10,63%
SANTA FE	3.070	3.846	3.018	-20,18%	1,72%	12.310	15.659	-21,39%	160	324	160	-50,62%	0,00%	576	1.053	-45,30%	12.886	16.712	-22,89%	8,40%
MENDOZA	1.379	1.418	1.160	-2,75%	18,88%	5.226	6.166	-15,24%	115	123	64	-6,50%	79,69%	303	475	-36,21%	5.529	6.641	-16,74%	3,60%
CHUBUT	1.060	1.086	1.008	-2,39%	5,16%	4.059	4.100	-1,00%	44	92	31	-52,17%	41,94%	157	272	-42,28%	4.216	4.372	-3,57%	2,75%
ENTRE RIOS	922	1.012	876	-8,89%	5,25%	3.678	4.278	-14,03%	54	105	78	-48,57%	-30,77%	223	359	-37,88%	3.901	4.637	-15,87%	2,54%
CHACO	852	701	867	21,54%	-1,73%	3.416	3.184	7,29%	44	64	50	-31,25%	-12,00%	168	259	-35,14%	3.584	3.443	4,10%	2,34%
SALTA	859	841	690	2,14%	24,49%	3.263	3.419	-4,56%	79	81	54	-2,47%	46,30%	227	268	-15,30%	3.490	3.687	-5,34%	2,27%
NEUQUEN	847	1.028	774	-17,61%	9,43%	3.293	4.027	-18,23%	42	41	40	2,44%	5,00%	176	208	-15,38%	3.469	4.235	-18,09%	2,26%
CORRIENTES	724	671	765	7,90%	-5,36%	2.977	3.248	-8,34%	87	94	77	-7,45%	12,99%	274	359	-23,68%	3.251	3.607	-9,87%	2,12%
TUCUMAN	778	822	647	-5,35%	20,25%	2.971	3.453	-13,96%	72	59	53	22,03%	35,85%	188	191	-1,57%	3.159	3.644	-13,31%	2,06%
SANTA CRUZ	673	709	709	-5,08%	-5,08%	2.727	2.722	0,18%	29	47	59	-38,30%	-50,85%	120	144	-16,67%	2.847	2.866	-0,66%	1,86%
RIO NEGRO	554	627	522	-11,64%	6,13%	2.053	2.490	-17,55%	13	19	27	-31,58%	-51,85%	69	90	-23,33%	2.122	2.580	-17,75%	1,38%
MISIONES	458	461	379	-0,65%	20,84%	1.850	2.336	-20,80%	21	32	14	-34,38%	50,00%	59	104	-43,27%	1.909	2.440	-21,76%	1,24%
JUJUY	440	395	422	11,39%	4,27%	1.642	1.869	-12,15%	40	50	41	-20,00%	-2,44%	143	232	-38,36%	1.785	2.101	-15,04%	1,16%
LA PAMPA	423	516	382	-18,02%	10,73%	1.659	2.176	-23,76%	17	19	17	-10,53%	0,00%	56	87	-35,63%	1.715	2.263	-24,22%	1,12%
SAN JUAN	446	426	363	4,69%	22,87%	1.611	1.714	-6,01%	16	41	19	-60,98%	-15,79%	71	141	-49,65%	1.682	1.855	-9,33%	1,10%
SANTIAGO DEL ESTERO	347	403	353	-13,90%	-1,70%	1.549	1.818	-14,80%	16	29	21	-44,83%	-23,81%	64	86	-25,58%	1.613	1.904	-15,28%	1,05%
FORMOSA	326	254	337	28,35%	-3,26%	1.354	1.301	4,07%	21	26	15	-19,23%	40,00%	60	55	9,09%	1.414	1.356	4,28%	0,92%
TIERRA DEL FUEGO	342	449	358	-23,83%	-4,47%	1.203	1.756	-31,49%	10	23	24	-56,52%	-58,33%	45	84	-46,43%	1.248	1.840	-32,17%	0,81%
SAN LUIS	313	268	330	16,79%	-5,15%	1.196	1.222	-2,13%	6	11	2	-45,45%	200,00%	32	36	-11,11%	1.228	1.258	-2,38%	0,80%
CATAMARCA	273	322	259	-15,22%	5,41%	1.140	1.298	-12,17%	5	7	17	-28,57%	-70,59%	42	30	40,00%	1.182	1.328	-10,99%	0,77%
LA RIOJA	243	183	249	32,79%	-2,41%	925	804	15,05%	8	1	8	700,00%	0,00%	27	23	17,39%	952	827	15,11%	0,62%



Patentamientos por Provincias y Tipos -

