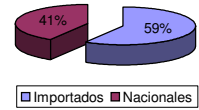




Patentamientos por Marcas - Mercado Total

	jul/08(a)	jun/08(b)	jul/07(c)	jul/06(d)	Var a-b	Var a-c	Var a-d	Ac. 08	Ac. 07	Var 08-07
Automovil	43.349	36.645	37.727	27.774	18,29%	14,90%	56,08%	296.561	263.726	12,45%
Comercial Liviano	11.602	9.474	9.038	6.646	22,46%	28,37%	74,57%	76.650	63.533	20,65%
Comercial Pesado	2.162	1.856	2.205	1.613	16,49%	-1,95%	34,04%	14.653	13.804	6,15%
Otros Pesados	1.305	1.111	1.227	929	17,46%	6,36%	40,47%	9.177	8.942	2,63%
Total	58.418	49.086	50.197	36.962	19,01%	16,38%	58,05%	397.041	350.005	13,44%
Prom. diario	2.655	2.454	2.390	1.760				2.738	2.431	
Dias habiles	22	20	21	21				145	144	

Patentamientos por origen		
	Jul-08	Ac. 08
Importados	35.331	232.885
Nacionales	23.087	164.085



Patentamientos Mensuales												
	ene	feb	mar	abr	may	jun	jul	ago	sep	oct	nov	dic
2008	85.813	46.479	44.278	56.153	56.814	49.086	58.418					
2007	82.561	38.846	47.385	41.636	47.235	42.145	50.197	54.288	48.859	49.505	40.642	24.538
Var% 08-07	3,94%	19,65%	-6,56%	34,87%	20,28%	16,47%	16,38%	-100,00%	-100,00%	-100,00%	-100,00%	-100,00%
2006	65.992	32.436	40.418	34.273	38.298	36.581	36.966	39.131	39.655	36.025	33.283	17.750
2005	52.439	26.340	30.580	32.954	33.460	32.578	34.182	31.919	36.150	30.591	29.390	15.980

Patentamientos por Marcas - Totales										2008	2008	2007	2007	Var
Marca	jul/08(a)	Part %	jul/07(c)	Part %	jun/08(e)	Part %	Var a-c	Var a-e	ene - jul	Part %	ene - jul	Part %	2008-2007	
Volkswagen	11.438	20,04%	9.191	18,80%	9.488	19,78%	24,45%	20,55%	69.850	18,02%	66.205	19,37%	5,51%	
Chevrolet	7.785	13,64%	7.765	15,88%	6.707	13,98%	0,26%	16,07%	55.092	14,21%	50.708	14,84%	8,65%	
Ford	7.380	12,93%	6.706	13,72%	5.701	11,89%	10,05%	29,45%	48.322	12,47%	45.639	13,35%	5,88%	
Renault	6.353	11,13%	6.248	12,78%	4.598	9,59%	1,68%	38,17%	46.321	11,95%	43.348	12,68%	6,86%	
Fiat	5.672	9,94%	4.546	9,30%	5.240	10,93%	24,77%	8,24%	41.503	10,71%	34.236	10,02%	21,23%	
Peugeot	5.530	9,69%	4.820	9,86%	5.309	11,07%	14,73%	4,16%	40.007	10,32%	36.882	10,79%	8,47%	
Toyota	3.099	5,43%	2.308	4,72%	2.613	5,45%	34,27%	18,60%	19.716	5,09%	17.621	5,16%	11,89%	
Citroen	1.699	2,98%	1.815	3,71%	1.547	3,23%	-6,39%	9,83%	15.405	3,97%	12.410	3,63%	24,13%	
Honda	1.921	3,36%	1.036	2,12%	1.649	3,44%	85,42%	16,49%	12.742	3,29%	6.123	1,79%	108,10%	
Mercedes Benz	1.394	2,44%	1.176	2,41%	1.085	2,26%	18,54%	28,48%	9.224	2,38%	8.232	2,41%	12,05%	
Suzuki	1.040	1,82%	1.092	2,23%	848	1,77%	-4,76%	22,64%	5.643	1,46%	5.843	1,71%	-3,42%	
Nissan	666	1,17%	323	0,66%	539	1,12%	106,19%	23,56%	4.178	1,08%	1.972	0,58%	111,87%	
Hyundai	610	1,07%	223	0,46%	426	0,89%	173,54%	43,19%	2.985	0,77%	1.112	0,33%	168,44%	
Iveco	406	0,71%	308	0,63%	431	0,90%	31,82%	-5,80%	2.916	0,75%	2.156	0,63%	35,25%	
Audi	324	0,57%	228	0,47%	237	0,49%	42,11%	36,71%	2.219	0,57%	1.767	0,52%	25,58%	
Kia	369	0,65%	134	0,27%	310	0,65%	175,37%	19,03%	2.096	0,54%	1.079	0,32%	94,25%	
BMW	268	0,47%	150	0,31%	193	0,40%	78,67%	38,86%	1.914	0,49%	1.560	0,46%	22,69%	
Mitsubishi	183	0,32%	112	0,23%	159	0,33%	63,39%	15,09%	1.204	0,31%	748	0,22%	60,96%	
Jeep	148	0,26%	133	0,27%	114	0,24%	11,28%	29,82%	1.085	0,28%	717	0,21%	51,32%	
Scania	185	0,32%	161	0,33%	132	0,28%	14,91%	40,15%	1.055	0,27%	937	0,27%	12,59%	
Chrysler	91	0,16%	92	0,19%	191	0,40%	-1,09%	-52,36%	901	0,23%	623	0,18%	44,62%	
Volvo	129	0,23%	84	0,17%	90	0,19%	53,57%	43,33%	796	0,21%	463	0,14%	71,92%	
Dodge	98	0,17%	41	0,08%	130	0,27%	139,02%	-24,62%	651	0,17%	263	0,08%	147,53%	
Agrale	60	0,11%	36	0,07%	50	0,10%	66,67%	20,00%	348	0,09%	259	0,08%	34,36%	
Subaru	45	0,08%	45	0,09%	29	0,06%	0,00%	55,17%	342	0,09%	248	0,07%	37,90%	
Mini	48	0,08%	35	0,07%	31	0,06%	37,14%	54,84%	292	0,08%	238	0,07%	22,69%	
Seat	51	0,09%	1	0,00%	46	0,10%	5000,00%	10,87%	250	0,06%	2	0,00%	12400,00%	
Puma de Tat	14	0,02%	31	0,06%	25	0,05%	-54,84%	-44,00%	201	0,05%	108	0,03%	86,11%	
Land Rover	13	0,02%	30	0,06%	29	0,06%	-56,67%	-55,17%	149	0,04%	120	0,04%	24,17%	
Porsche	24	0,04%	1	0,00%	11	0,02%	2300,00%	118,18%	143	0,04%	72	0,02%	98,61%	
Chery	41	0,07%		0,00%		0,00%	N/D	N/D	41	0,01%		0,00%	N/D	
Alfa Romeo	1	0,00%	11	0,02%	1	0,00%	-90,91%	0,00%	25	0,01%	46	0,01%	-45,65%	
Ferrari	3	0,01%		0,00%		0,00%	N/D	N/D	4	0,00%	4	0,00%	0,00%	
Hummer		0,00%	1	0,00%	1	0,00%	-100,00%	-100,00%	2	0,00%	6	0,00%	-66,67%	
Jaguar		0,00%		0,00%		0,00%	N/D	N/D	1	0,00%	11	0,00%	-90,91%	
Lamborghini		0,00%		0,00%		0,00%	N/D	N/D	1	0,00%		0,00%	N/D	
Isuzu		0,00%		0,00%		0,00%	N/D	N/D		0,00%	9	0,00%	-100,00%	
Maserati		0,00%		0,00%		0,00%	N/D	N/D		0,00%	3	0,00%	-100,00%	
Total	57.088		48.883		47.960				387.624		341.770			

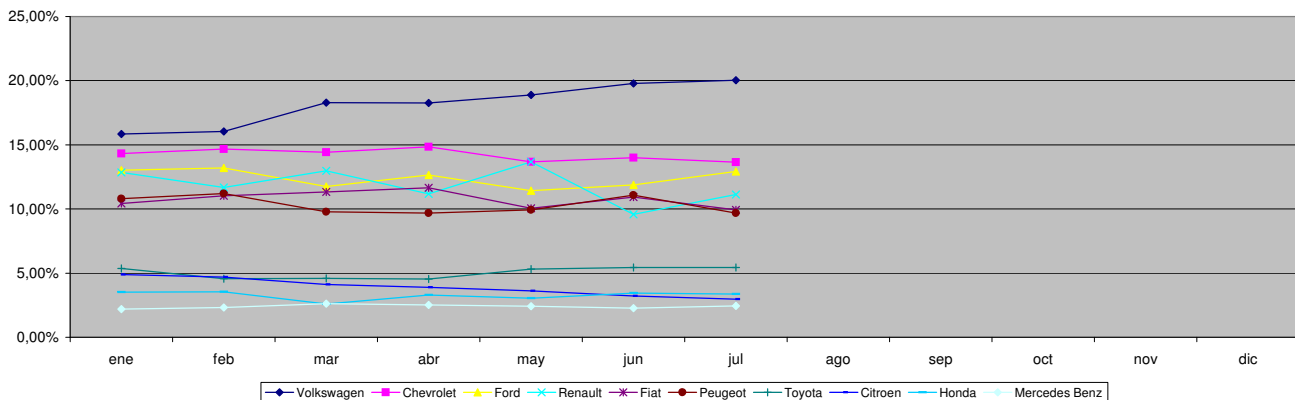


Patentamientos por Marcas - Mercado Total

Patentamientos por Marcas - Autos + Livianos									2008	2008	2007	2007	Var
Marca	jul/08(a)	Part %	jul/07(c)	Part %	jun/08(e)	Part %	Var a-c	Var a-e	ene - jul	Part %	ene - jul	Part %	2008-2007
Volkswagen	11.191	20,37%	8.845	18,91%	9.271	20,10%	26,52%	20,71%	68.010	18,22%	64.268	19,64%	5,82%
Chevrolet	7.785	14,17%	7.765	16,60%	6.707	14,54%	0,26%	16,07%	55.092	14,76%	50.708	15,49%	8,65%
Renault	6.293	11,45%	6.186	13,23%	4.546	9,86%	1,73%	38,43%	45.919	12,30%	41.856	12,79%	9,71%
Ford	6.952	12,65%	6.276	13,42%	5.342	11,58%	10,77%	30,14%	45.366	12,16%	42.664	13,04%	6,33%
Fiat	5.672	10,32%	4.546	9,72%	5.240	11,36%	24,77%	8,24%	41.503	11,12%	34.236	10,46%	21,23%
Peugeot	5.530	10,06%	4.820	10,31%	5.309	11,51%	14,73%	4,16%	40.007	10,72%	36.882	11,27%	8,47%
Toyota	3.099	5,64%	2.308	4,94%	2.613	5,67%	34,27%	18,60%	19.716	5,28%	17.621	5,38%	11,89%
Citroen	1.699	3,09%	1.815	3,88%	1.547	3,35%	-6,39%	9,83%	15.405	4,13%	12.410	3,79%	24,13%
Honda	1.921	3,50%	1.036	2,22%	1.649	3,58%	85,42%	16,49%	12.742	3,41%	6.123	1,87%	108,10%
Suzuki	1.040	1,89%	1.092	2,34%	848	1,84%	-4,76%	22,64%	5.643	1,51%	5.843	1,79%	-3,42%
Mercedes Benz	634	1,15%	370	0,79%	463	1,00%	71,35%	36,93%	4.234	1,13%	3.049	0,93%	38,87%
Nissan	666	1,21%	323	0,69%	539	1,17%	106,19%	23,56%	4.178	1,12%	1.972	0,60%	111,87%
Hyundai	587	1,07%	221	0,47%	402	0,87%	165,61%	46,02%	2.884	0,77%	1.079	0,33%	167,28%
Audi	324	0,59%	228	0,49%	237	0,51%	42,11%	36,71%	2.219	0,59%	1.767	0,54%	25,58%
Kia	369	0,67%	134	0,29%	310	0,67%	175,37%	19,03%	2.096	0,56%	1.013	0,31%	106,91%
BMW	268	0,49%	150	0,32%	193	0,42%	78,67%	38,86%	1.914	0,51%	1.560	0,48%	22,69%
Mitsubishi	183	0,33%	112	0,24%	159	0,34%	63,39%	15,09%	1.204	0,32%	748	0,23%	60,96%
Jeep	148	0,27%	133	0,28%	114	0,25%	11,28%	29,82%	1.085	0,29%	717	0,22%	51,32%
Chrysler	91	0,17%	92	0,20%	191	0,41%	-1,09%	-52,36%	901	0,24%	623	0,19%	44,62%
Iveco	136	0,25%	101	0,22%	129	0,28%	34,65%	5,43%	880	0,24%	872	0,27%	0,92%
Dodge	98	0,18%	41	0,09%	130	0,28%	139,02%	-24,62%	651	0,17%	263	0,08%	147,53%
Subaru	45	0,08%	45	0,10%	29	0,06%	0,00%	55,17%	342	0,09%	248	0,08%	37,90%
Volvo	39	0,07%	47	0,10%	32	0,07%	-17,02%	21,88%	308	0,08%	225	0,07%	36,89%
Mini	48	0,09%	35	0,07%	31	0,07%	37,14%	54,84%	292	0,08%	238	0,07%	22,69%
Seat	51	0,09%	1	0,00%	46	0,10%	5000,00%	10,87%	250	0,07%	2	0,00%	12400,00%
Land Rover	13	0,02%	30	0,06%	29	0,06%	-56,67%	-55,17%	149	0,04%	120	0,04%	24,17%
Porsche	24	0,04%	1	0,00%	11	0,02%	2300,00%	118,18%	143	0,04%	72	0,02%	98,61%
Chery	41	0,07%		0,00%		0,00%	N/D	N/D	41	0,01%		0,00%	N/D
Alfa Romeo	1	0,00%	11	0,02%	1	0,00%	-90,91%	0,00%	25	0,01%	46	0,01%	-45,65%
Ferrari	3	0,01%		0,00%		0,00%	N/D	N/D	4	0,00%	4	0,00%	0,00%
Hummer		0,00%	1	0,00%	1	0,00%	-100,00%	-100,00%	2	0,00%	6	0,00%	-66,67%
Jaguar		0,00%		0,00%		0,00%	N/D	N/D	1	0,00%	11	0,00%	-90,91%
Lamborghini		0,00%		0,00%		0,00%	N/D	N/D	1	0,00%		0,00%	N/D
Agrale		0,00%		0,00%		0,00%	N/D	N/D		0,00%	1	0,00%	-100,00%
Isuzu		0,00%		0,00%		0,00%	N/D	N/D		0,00%	9	0,00%	-100,00%
Maserati		0,00%		0,00%		0,00%	N/D	N/D		0,00%	3	0,00%	-100,00%
Total	54.951		46.765		46.119				373.207		327.259		

Patentamientos por Marcas - Camiones + Buses									2008	2008	2007	2007	Var
Marca	jul/08(a)	Part %	jul/07(c)	Part %	jun/08(e)	Part %	Var a-c	Var a-e	ene - jul	Part %	ene - jul	Part %	2008-2007
Mercedes Benz	760	35,56%	806	38,05%	622	33,79%	-5,71%	22,19%	4.990	34,61%	5.183	35,72%	-3,72%
Ford	428	20,03%	430	20,30%	359	19,50%	-0,47%	19,22%	2.956	20,50%	2.975	20,50%	-0,64%
Iveco	270	12,63%	207	9,77%	302	16,40%	30,43%	-10,60%	2.036	14,12%	1.284	8,85%	58,57%
Volkswagen	247	11,56%	346	16,34%	217	11,79%	-28,61%	13,82%	1.840	12,76%	1.937	13,35%	-5,01%
Scania	185	8,66%	161	7,60%	132	7,17%	14,91%	40,15%	1.055	7,32%	937	6,46%	12,59%
Volvo	90	4,21%	37	1,75%	58	3,15%	143,24%	55,17%	488	3,38%	238	1,64%	105,04%
Renault	60	2,81%	62	2,93%	52	2,82%	-3,23%	15,38%	402	2,79%	1.492	10,28%	-73,06%
Agrale	60	2,81%	36	1,70%	50	2,72%	66,67%	20,00%	348	2,41%	258	1,78%	34,88%
Puma de Tat	14	0,66%	31	1,46%	25	1,36%	-54,84%	-44,00%	201	1,39%	108	0,74%	86,11%
Hyundai	23	1,08%	2	0,09%	24	1,30%	1050,00%	-4,17%	101	0,70%	33	0,23%	206,06%
Kia		0,00%		0,00%		0,00%	N/D	N/D		0,00%	66	0,45%	-100,00%
Total	2.137		2.118		1.841				14.417		14.511		

Participacion por Marcas - Evolucion Mensual

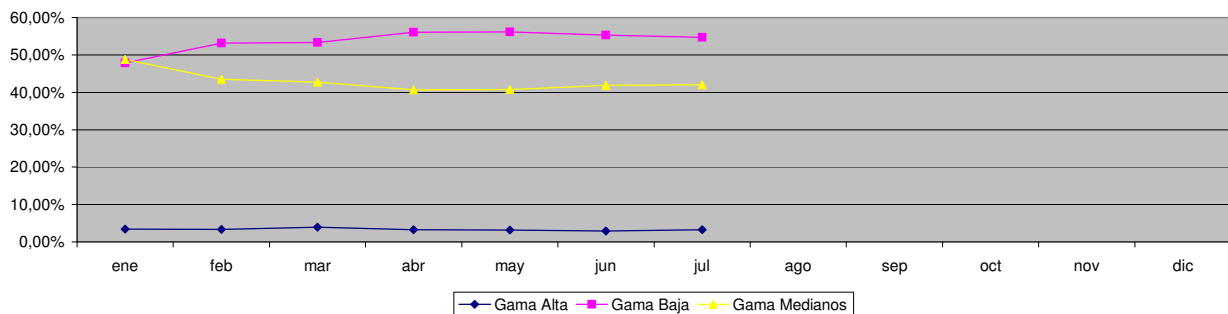




Patentamientos por Ranking de Automoviles - Mercado Total

Rank.	Modelo	Ranking Por Modelos - Automoviles										
		jul/08 (a)	jul/07 (b)	jun/08 (c)	Var a-b	Var a-c	Ac. 08	Part %	Ac. 07	Part %	Var 08-07	
1	Volkswagen GOL	4.377	3.742	3.888	16,97%	12,58%	26.977	9,10%	25.587	9,70%	5,43%	
2	Chevrolet CORSA	3.047	3.024	2.651	0,76%	14,94%	22.472	7,58%	21.000	7,96%	7,01%	
3	Peugeot 206	3.176	2.238	3.011	41,91%	5,48%	20.608	6,95%	17.926	6,80%	14,96%	
4	Peugeot 307	1.242	1.381	1.339	-10,07%	-7,24%	11.470	3,87%	10.409	3,95%	10,19%	
5	Ford ECOSPORT	1.657	1.526	1.398	8,58%	18,53%	11.358	3,83%	9.248	3,51%	22,82%	
6	Renault CLIO	1.737	1.738	1.195	-0,06%	45,36%	10.882	3,67%	14.188	5,38%	-23,30%	
7	Volkswagen SURAN	1.487	1.165	1.239	27,64%	20,02%	10.349	3,49%	9.380	3,56%	10,33%	
8	Volkswagen FOX/CROSSFOX	1.374	1.256	1.208	9,39%	13,74%	8.847	2,98%	8.130	3,08%	8,82%	
9	Ford FIESTA	1.400	1.548	1.044	-9,56%	34,10%	8.775	2,96%	10.015	3,80%	-12,38%	
10	Fiat SIENA	1.271	764	1.088	66,36%	16,82%	8.678	2,93%	6.316	2,39%	37,40%	
11	Fiat UNO	933	834	951	11,87%	-1,89%	7.813	2,63%	6.751	2,56%	15,73%	
12	Fiat PALIO	1.218	1.220	1.027	-0,16%	18,60%	7.754	2,61%	8.932	3,39%	-13,19%	
13	Renault MEGANE	1.032	1.101	654	-6,27%	57,80%	7.645	2,58%	9.108	3,45%	-16,06%	
14	Volkswagen BORA	1.600	804	1.114	99,00%	43,63%	7.608	2,57%	5.891	2,23%	29,15%	
15	Chevrolet ASTRA	1.136	1.225	863	-7,27%	31,63%	7.219	2,43%	5.902	2,24%	22,31%	
16	Ford FOCUS	824	872	660	-5,50%	24,85%	6.503	2,19%	6.261	2,37%	3,87%	
17	Citroen C4	669	264	666	153,41%	0,45%	6.207	2,09%	328	0,12%	1792,38%	
18	Ford KA	1.313	653	833	101,07%	57,62%	5.868	1,98%	5.789	2,20%	1,36%	
19	Chevrolet CORSA II	731	574	677	27,35%	7,98%	5.672	1,91%	5.805	2,20%	-2,29%	
20	Honda FIT	757	458	646	65,28%	17,18%	5.437	1,83%	2.646	1,00%	105,48%	
21	Fiat PUNTO	688		633	N/D	8,69%	5.354	1,81%		0,00%	N/D	
22	Renault KANGOO	714	572	540	24,83%	32,22%	5.281	1,78%	2.910	1,10%	81,48%	
23	Chevrolet MERIVA	702	1.093	677	-35,77%	3,69%	5.261	1,77%	5.693	2,16%	-7,59%	
24	Toyota COROLLA	937	535	769	75,14%	21,85%	4.634	1,56%	4.347	1,65%	6,60%	
25	Suzuki FUN	808	1.013	647	-20,24%	24,88%	4.230	1,43%	5.301	2,01%	-20,20%	
26	Honda CIVIC	575	340	528	69,12%	8,90%	3.881	1,31%	1.885	0,71%	105,89%	
27	Volkswagen VENTO	632	368	413	71,74%	53,03%	3.606	1,22%	3.099	1,18%	16,36%	
28	Renault MEGANE II	444	557	331	-20,29%	34,14%	3.512	1,18%	4.175	1,58%	-15,88%	
29	Renault LOGAN	418	592	262	-29,39%	59,54%	3.474	1,17%	861	0,33%	303,48%	
30	Citroen C3	211	569	264	-62,92%	-20,08%	3.403	1,15%	5.479	2,08%	-37,89%	
31	Chevrolet CORSA SW	483	486	427	-0,62%	13,11%	3.338	1,13%	3.688	1,40%	-9,49%	
32	Fiat IDEA	411	590	382	-30,34%	7,59%	3.090	1,04%	3.133	1,19%	-1,37%	
33	Renault SANDERO	365		327	N/D	11,62%	3.048	1,03%		0,00%	N/D	
34	Fiat PALIO WEEKEND	141	500	230	-71,80%	-38,70%	2.587	0,87%	3.696	1,40%	-30,01%	
35	Volkswagen POLO	371	494	322	-24,90%	15,22%	2.522	0,85%	3.180	1,21%	-20,69%	
36	Volkswagen GOL COUNTRY	450	393	339	14,50%	32,74%	2.463	0,83%	3.283	1,24%	-24,98%	
37	Chevrolet VECTRA	323	267	375	20,97%	-13,87%	2.371	0,80%	1.569	0,59%	51,12%	
38	Peugeot PARTNER	209	321	200	-34,89%	4,50%	1.924	0,65%	2.210	0,84%	-12,94%	
39	Nissan TIIDA	319		248	N/D	28,63%	1.855	0,63%		0,00%	N/D	
40	Citroen BERLINGO	227	313	190	-27,48%	19,47%	1.843	0,62%	2.040	0,77%	-9,66%	
41	Renault SCENIC	194	231	162	-16,02%	19,75%	1.677	0,57%	2.081	0,79%	-19,41%	
42	Citroen PICASSO	237	256	154	-7,42%	53,90%	1.567	0,53%	1.885	0,71%	-16,87%	
43	Chevrolet ZAFIRA	207	185	185	11,89%	11,89%	1.366	0,46%	1.091	0,41%	25,21%	
44	Volkswagen GOLF	178	64	188	178,13%	-5,32%	1.303	0,44%	1.118	0,42%	16,55%	
45	Audi A3	181	113	152	60,18%	19,08%	1.203	0,41%	861	0,33%	39,72%	
46	Mercedes Benz CLASE C	161	73	104	120,55%	54,81%	1.093	0,37%	578	0,22%	89,10%	
47	BMW 300 SERIES	121	74	83	63,51%	45,78%	884	0,30%	790	0,30%	11,90%	
48	Volkswagen PASSAT	100	68	84	47,06%	19,05%	852	0,29%	829	0,31%	2,77%	
49	Chrysler PT CRUISER	74	79	177	-6,33%	-58,19%	760	0,26%	491	0,19%	54,79%	
50	Suzuki SWIFT	119	44	92	170,45%	29,35%	693	0,23%	212	0,08%	226,89%	
51	Otros	1.368	1.150	1.008	18,96%	35,71%	9.343	3,15%	7.629	2,89%	22,47%	
Total		43.349	37.727	36.645			296.560	1	263.726			

Autos - Participacion por Segmento





Patentamientos por Ranking de Livianos y Pesados - Mercado Total

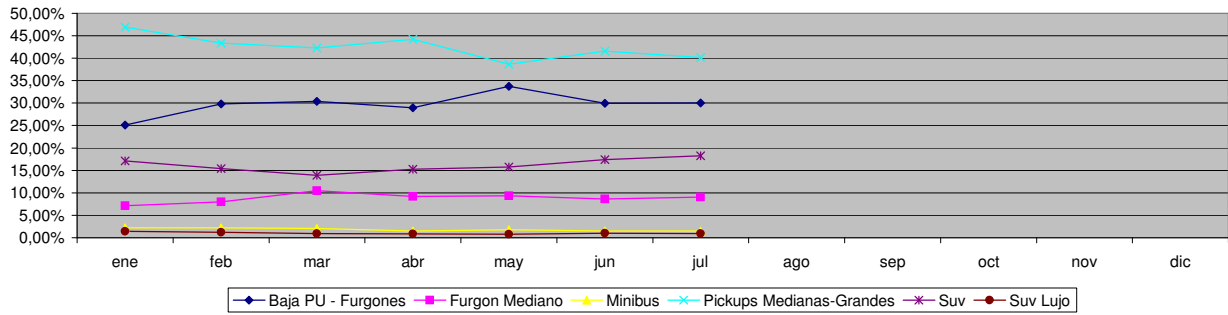
Comercial Liviano											
Rank.	Modelo	Jul/08 (a)	Jul/07 (b)	Jun/08 (c)	Var a-b	Var a-c	Ac. 08	Part %	Ac. 07	Part %	Var 08-07
1	Toyota HILUX	1.714	1.404	1.522	22,08%	12,61%	11.962	15,61%	10.681	16,81%	11,99%
2	Ford RANGER	1.468	1.315	1.169	11,63%	25,58%	10.275	13,41%	9.043	14,23%	13,62%
3	Renault KANGOO FURGON	1.105	974	811	13,45%	36,25%	7.748	10,11%	6.665	10,49%	16,25%
4	Chevrolet S-10	895	870	652	2,87%	37,27%	5.962	7,78%	5.623	8,85%	6,03%
5	Peugeot PARTNER FURGON	731	578	566	26,47%	29,15%	4.395	5,73%	4.479	7,05%	-1,88%
6	Fiat FIORINO	673	349	609	92,84%	10,51%	3.958	5,16%	2.873	4,52%	37,77%
7	Honda CRV	536	173	416	209,83%	28,85%	3.100	4,04%	1.155	1,82%	168,40%
8	Mercedes Benz SPRINTER	385	214	256	79,91%	50,39%	2.431	3,17%	1.877	2,95%	29,52%
9	Volkswagen SAVEIRO	419	323	341	29,72%	22,87%	2.299	3,00%	2.612	4,11%	-11,98%
10	Citroen BERLINGO FURGON	247	373	222	-33,78%	11,26%	2.009	2,62%	2.376	3,74%	-15,45%
11	Renault MASTER	220	286	206	-23,08%	6,80%	1.943	2,53%	1.238	1,95%	56,95%
12	Toyota HILUX SW4	209	184	177	13,59%	18,08%	1.641	2,14%	1.434	2,26%	14,44%
13	Ford F 100	162	288	152	-43,75%	6,58%	1.604	2,09%	1.741	2,74%	-7,87%
14	Nissan FRONTIER	174	205	178	-15,12%	-2,25%	1.423	1,86%	1.229	1,93%	15,79%
15	Hyundai TUCSON	221	60	156	268,33%	41,67%	1.035	1,35%	267	0,42%	287,64%
16	Chevrolet CAPTIVA	187		151	N/D	23,84%	900	1,17%		0,00%	N/D
17	Mitsubishi L200	150	75	137	100,00%	9,49%	888	1,16%	520	0,82%	70,77%
18	Iveco DAILY	136	101	129	34,65%	5,43%	866	1,13%	872	1,37%	-0,69%
19	Hyundai SANTA FE	127	35	117	262,86%	8,55%	795	1,04%	214	0,34%	271,50%
20	Fiat DUCATO	87	64	77	35,94%	12,99%	766	1,00%	515	0,81%	48,74%
21	Otros	1.756	1.167	1.430	50,47%	22,80%	10.647	13,89%	8.119	12,78%	31,14%
Total		11.602	9.038	9.474			76.647	1	63.533		

Comercial Pesado											
Rank.	Modelo	Jul/08 (a)	Jul/07 (b)	Jun/08 (c)	Var a-b	Var a-c	Ac. 08	Part %	Ac. 07	Part %	Var 08-07
1	Ford CARGO 1722 E	143	127	116	12,60%	23,28%	1.094	7,59%	211	1,57%	418,48%
2	Iveco 170 E	119	65	128	83,08%	-7,03%	785	5,45%	420	3,12%	86,90%
3	Mercedes Benz LS 1634	92	127	65	-27,56%	41,54%	782	5,43%	1.066	7,93%	-26,64%
4	Mercedes Benz OF 1418	122	158	97	-22,78%	25,77%	730	5,06%	681	5,07%	7,20%
5	Ford F-4000	97	65	78	49,23%	24,36%	648	4,50%	472	3,51%	37,29%
6	Volkswagen 17220	99	115	67	-13,91%	47,76%	574	3,98%	599	4,46%	-4,17%
7	Mercedes Benz L-1624	76	155	33	-50,97%	130,30%	560	3,89%	555	4,13%	0,90%
8	Iveco 450 E	39	88	68	-55,68%	-42,65%	508	3,52%	530	3,94%	-4,15%
9	Mercedes Benz 1315	66	62	66	6,45%	0,00%	465	3,23%	338	2,51%	37,57%
10	Ford CARGO 1832 E	44	64	57	-31,25%	-22,81%	452	3,14%	125	0,93%	261,60%
11	Mercedes Benz ATEGO 1725	70	6	82	1066,67%	-14,63%	438	3,04%	6	0,04%	7200,00%
12	Mercedes Benz 710	55	53	36	3,77%	52,78%	361	2,50%	342	2,54%	5,56%
13	Volkswagen 19320	55	37	41	48,65%	34,15%	313	2,17%	67	0,50%	367,16%
14	Mercedes Benz L1634	36	75	37	-52,00%	-2,70%	312	2,16%	476	3,54%	-34,45%
15	Volkswagen 13180	14	61	29	-77,05%	-51,72%	292	2,03%	371	2,76%	-21,29%
16	Volkswagen 17250 E	49	21	31	133,33%	58,06%	279	1,94%	27	0,20%	933,33%
17	Mercedes Benz AXOR 1933	66	4	42	1550,00%	57,14%	264	1,83%	4	0,03%	6500,00%
18	Iveco 490 S	50		26	N/D	92,31%	262	1,82%		0,00%	N/D
19	Renault PREMIUM	31	40	27	-22,50%	14,81%	260	1,80%	208	1,55%	25,00%
20	Mercedes Benz O-500	29	36	30	-19,44%	-3,33%	239	1,66%	239	1,78%	0,00%
21	Otros	785	759	685	3,43%	14,60%	4.795	33,27%	6.706	49,88%	-28,50%
Total		2.137	2.118	1.841			14.413	1	13.443		

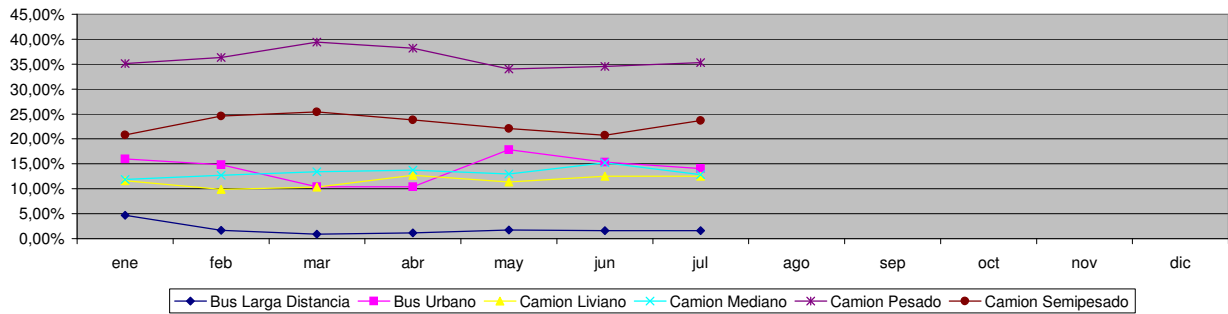


Patentamientos por Ranking de Livianos y Pesados - Mercado Total

Comercial Liviano



Comercial Pesado



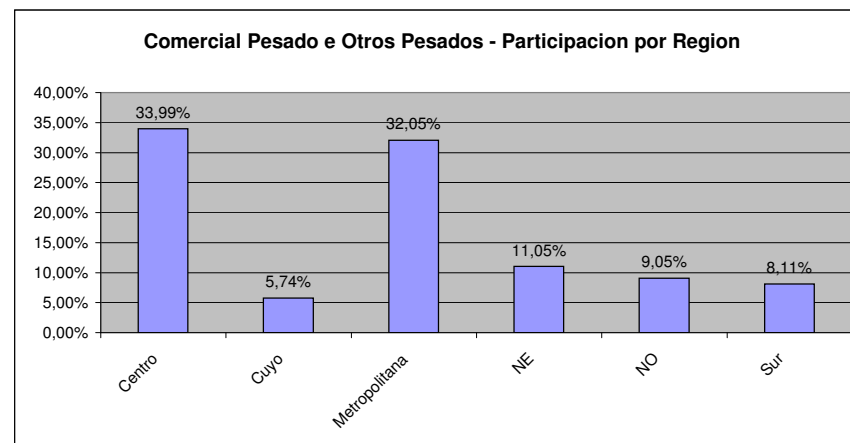
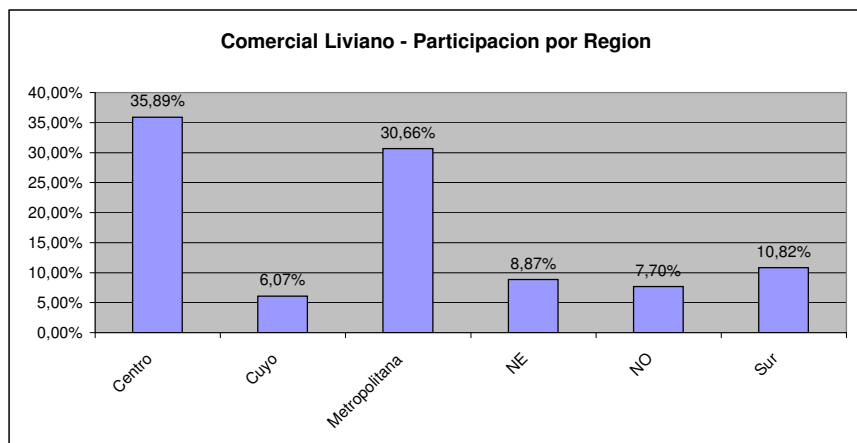
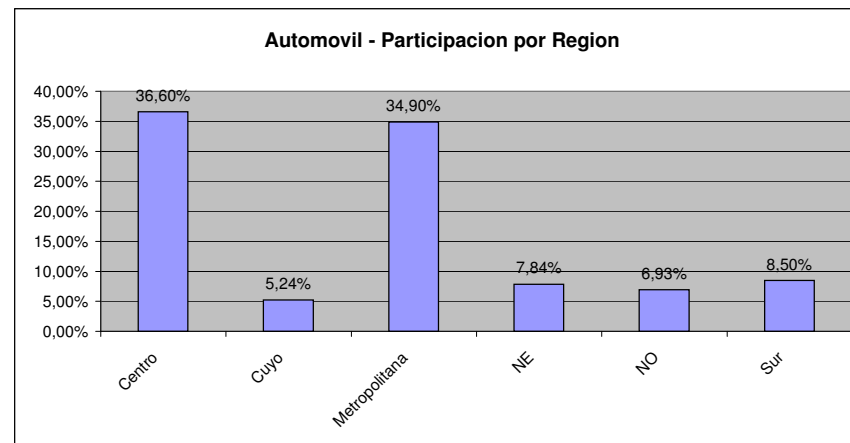
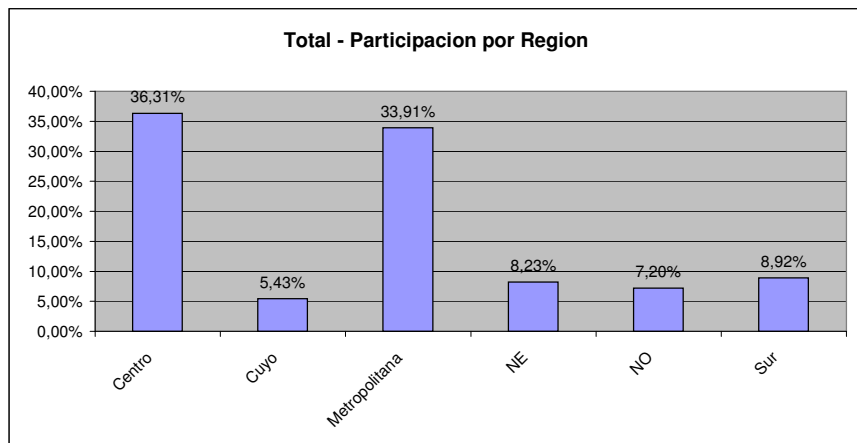


Patentamientos por Provincias y Tipos -

Distrito	Automovil+Comercial Liviano							Comercial Pesado+Otros Pesados							Mercado Total					
	jul/08 (a)	jul/07 (b)	jun/08 (c)	Var a-b	Var a-c	Ac. 08	Ac. 07	Var 08-07	jul/08 (a)	jul/07 (b)	jun/08 (c)	Var a-b	Var a-c	Ac. 08	Ac. 07	Var 08-07	Ac. 08	Ac. 07	Var 08-07	Part %
CAPITAL FEDERAL	10.209	8.963	8.918	13,90%	14,48%	67.435	63.929	5,48%	698	960	709	-27,29%	-1,55%	5.474	5.840	-6,27%	72.909	69.769	4,50%	18,36%
GRAN BUENOS AIRES	8.864	7.683	7.677	15,37%	15,46%	59.558	52.850	12,69%	353	270	270	30,74%	30,74%	2.164	2.333	-7,24%	61.722	55.183	11,85%	15,55%
BUENOS AIRES	8.600	7.595	7.165	13,23%	20,03%	57.573	51.153	12,55%	508	420	395	20,95%	28,61%	3.175	2.825	12,39%	60.748	53.978	12,54%	15,30%
CORDOBA	5.778	4.619	4.749	25,09%	21,67%	39.983	32.426	23,31%	361	302	275	19,54%	31,27%	2.335	1.902	22,77%	42.318	34.328	23,28%	10,66%
SANTA FE	4.845	4.210	3.949	15,08%	22,69%	34.033	29.437	15,61%	349	288	264	21,18%	32,20%	2.399	1.944	23,41%	36.432	31.381	16,10%	9,18%
MENDOZA	2.106	1.659	1.755	26,94%	20,00%	13.758	11.606	18,54%	145	142	95	2,11%	52,63%	996	1.021	-2,45%	14.754	12.627	16,84%	3,72%
ENTRE RIOS	1.333	1.066	1.076	25,05%	23,88%	9.142	7.939	15,15%	117	96	96	21,88%	21,88%	771	693	11,26%	9.913	8.632	14,84%	2,50%
CHUBUT	1.330	1.155	1.065	15,15%	24,88%	8.940	7.862	13,71%	83	92	79	-9,78%	5,06%	714	675	5,78%	9.654	8.537	13,08%	2,43%
NEUQUEN	1.359	1.134	1.108	19,84%	22,65%	8.966	7.185	24,79%	61	69	94	-11,59%	-35,11%	521	538	-3,16%	9.487	7.723	22,84%	2,39%
SALTA	986	870	838	13,33%	17,66%	7.425	6.475	14,67%	99	98	115	1,02%	-13,91%	687	653	5,21%	8.112	7.128	13,80%	2,04%
TUCUMAN	1.156	907	814	27,45%	42,01%	7.446	6.453	15,39%	87	70	77	24,29%	12,99%	539	479	12,53%	7.985	6.932	15,19%	2,01%
CORRIENTES	902	748	785	20,59%	14,90%	6.687	5.572	20,01%	130	129	102	0,78%	27,45%	864	672	28,57%	7.551	6.244	20,93%	1,90%
CHACO	1.067	685	787	55,77%	35,58%	6.820	4.976	37,06%	110	73	74	50,68%	48,65%	609	488	24,80%	7.429	5.464	35,96%	1,87%
SANTA CRUZ	933	615	808	51,71%	15,47%	5.967	4.860	22,78%	31	85	30	-63,53%	3,33%	294	391	-24,81%	6.261	5.251	19,23%	1,58%
RIO NEGRO	794	837	711	-5,14%	11,67%	5.542	5.268	5,20%	19	28	17	-32,14%	11,76%	172	187	-8,02%	5.714	5.455	4,75%	1,44%
MISIONES	611	652	550	-6,29%	11,09%	4.701	4.604	2,11%	42	34	36	23,53%	16,67%	261	254	2,76%	4.962	4.858	2,14%	1,25%
LA PAMPA	578	508	513	13,78%	12,67%	4.456	3.689	20,79%	29	24	16	20,83%	81,25%	192	188	2,13%	4.648	3.877	19,89%	1,17%
JUJUY	497	406	461	22,41%	7,81%	3.859	3.296	17,08%	75	81	72	-7,41%	4,17%	569	609	-6,57%	4.428	3.905	13,39%	1,12%
TIERRA DEL FUEGO	626	616	528	1,62%	18,56%	4.083	3.767	8,39%	34	34	38	0,00%	-10,53%	231	246	-6,10%	4.314	4.013	7,50%	1,09%
SAN JUAN	563	392	389	43,62%	44,73%	3.677	2.967	23,93%	30	41	45	-26,83%	-33,33%	284	244	16,39%	3.961	3.211	23,36%	1,00%
SANTIAGO DEL ESTERO	386	399	369	-3,26%	4,61%	3.411	2.868	18,93%	23	33	22	-30,30%	4,55%	196	189	3,70%	3.607	3.057	17,99%	0,91%
SAN LUIS	414	298	337	38,93%	22,85%	2.753	2.313	19,02%	11	19	23	-42,11%	-52,17%	89	105	-15,24%	2.842	2.418	17,54%	0,72%
FORMOSA	410	256	290	60,16%	41,38%	2.691	2.110	27,54%	14	31	8	-54,84%	75,00%	128	161	-20,50%	2.819	2.271	24,13%	0,71%
CATAMARCA	361	313	284	15,34%	27,11%	2.618	2.079	25,93%	24	6	11	300,00%	118,18%	88	64	37,50%	2.706	2.143	26,27%	0,68%
LA RIOJA	243	179	193	35,75%	25,91%	1.687	1.575	7,11%	34	7	4	385,71%	750,00%	78	45	73,33%	1.765	1.620	8,95%	0,44%



Patentamientos por Provincias y Tipos -





Patentamientos por Regiones de Buenos Aires

Subregion	Automovil+Comercial Liviano								Comercial Pesado+Otros Pesados								Mercado Total		
	jul/08 (a)	jul/07 (b)	jun/08 (c)	Var a-b	Var a-c	Ac. 08	Ac. 07	Var 08-07	jul/08 (a)	jul/07 (b)	jun/08 (c)	Var a-b	Var a-c	Ac. 08	Ac. 07	Var 08-07	Ac. 08	Ac. 07	Var 08-07
GRAN BUENOS AIRES-OESTE	3.627	3.097	3.073	17,11%	18,03%	24.092	21.201	13,64%	138	119	121	15,97%	14,05%	923	939	-1,70%	25.015	22.140	12,99%
GRAN BUENOS AIRES-SUR	3.184	2.774	2.712	14,78%	17,40%	21.235	18.908	12,31%	171	101	107	69,31%	59,81%	887	970	-8,56%	22.122	19.878	11,29%
GRAN BUENOS AIRES-NORTE	2.053	1.812	1.892	13,30%	8,51%	14.231	12.741	11,69%	44	50	42	-12,00%	4,76%	354	424	-16,51%	14.585	13.165	10,79%
BUENOS AIRES-NORTE	1.755	1.593	1.499	10,17%	17,08%	12.110	10.682	13,37%	129	111	86	16,22%	50,00%	743	633	17,38%	12.853	11.315	13,59%
BUENOS AIRES-ATLANTICA	1.596	1.444	1.423	10,53%	12,16%	11.300	9.928	13,82%	49	69	60	-28,99%	-18,33%	372	344	8,14%	11.672	10.272	13,63%
BUENOS AIRES-OESTE	1.432	1.344	1.057	6,55%	35,48%	9.436	8.573	10,07%	157	116	102	35,34%	53,92%	931	840	10,83%	10.367	9.413	10,13%
BUENOS AIRES-LA PLATA	1.554	1.357	1.222	14,52%	27,17%	9.750	9.382	3,92%	24	13	21	84,62%	14,29%	163	154	5,84%	9.913	9.536	3,95%
BUENOS AIRES-SUR	1.185	935	1.009	26,74%	17,44%	7.842	6.312	24,24%	72	55	58	30,91%	24,14%	468	370	26,49%	8.310	6.682	24,36%
BUENOS AIRES-CENTRO	1.078	922	955	16,92%	12,88%	7.135	6.276	13,69%	77	56	68	37,50%	13,24%	498	484	2,89%	7.633	6.760	12,91%



Patentamientos por Regiones de Buenos Aires

