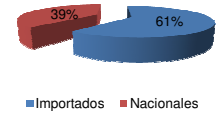




Patentamientos por Marcas - Mercado Total

	ago/10(a)	jul/10(b)	ago/09(c)	ago/08(d)	Var a-b	Var a-c	Var a-d	Ac. 10	Ac. 09	Var 10-09
Automovil	42.564	44.281	33.532	37.806	-3,88%	26,94%	12,59%	348.818	287.214	21,45%
Comercial Liviano	10.777	11.002	7.167	10.192	-2,05%	50,37%	5,74%	83.944	65.892	27,40%
Comercial Pesado	1.666	1.479	1.130	1.856	12,64%	47,43%	-10,24%	11.331	9.405	20,48%
Otros Pesados	765	809	605	1.256	-5,44%	26,45%	-39,09%	6.338	5.644	12,30%
Total	55.772	57.571	42.434	51.110	-3,12%	31,43%	9,12%	450.431	368.155	22,35%
Prom. diario	2.656	2.741	2.122	2.434				2.747	2.287	
Dias habiles	21	21	20	21				164	161	

Patentamientos por origen		
	ago/10	Ac. 10
Importados	2.573	243.719
Nacionales	1.539	155.052



Patentamientos Mensuales												
	ene	feb	mar	abr	may	jun	jul	ago	sep	oct	nov	dic
2010	78.464	44.760	57.287	50.947	50.820	54.810	57.571	55.772				
2009	73.927	39.075	41.301	40.534	40.147	44.104	46.633	42.434	46.021	39.963	37.493	23.282
Var% 10-09	6,14%	14,55%	38,71%	25,69%	26,58%	24,27%	23,46%	31,43%	-100,00%	-100,00%	-100,00%	-100,00%
2008	85.811	46.476	44.277	56.149	56.809	49.082	58.414	51.110	56.197	51.035	35.528	19.891
2007	82.552	38.841	47.379	41.626	47.231	42.139	50.181	54.285	48.857	49.497	40.640	24.527

Patentamientos por Marcas - Totales									2010	2010	2009	2009	Var
Marca	ago/10(a)	Part %	ago/09(c)	Part %	jul/10(e)	Part %	Var a-c	Var a-e	ene - ago	Part %	ene - ago	Part %	2010-2009
Volkswagen	9.417	17,10%	8.536	20,38%	8.222	14,47%	10,32%	14,53%	84.954	19,10%	68.914	18,98%	23,28%
Chevrolet	8.484	15,41%	6.209	14,83%	8.811	15,51%	36,64%	-3,71%	68.848	15,48%	51.899	14,30%	32,66%
Ford	6.554	11,90%	6.023	14,38%	8.027	14,13%	8,82%	-18,35%	55.912	12,57%	48.417	13,34%	15,48%
Renault	7.505	13,63%	5.237	12,51%	8.971	15,79%	43,31%	-16,34%	54.324	12,22%	44.350	12,22%	22,49%
Fiat	5.273	9,57%	4.127	9,86%	5.234	9,21%	27,77%	0,75%	46.221	10,39%	35.749	9,85%	29,29%
Peugeot	5.469	9,93%	3.422	8,17%	5.939	10,45%	59,82%	-7,91%	38.067	8,56%	33.916	9,34%	12,24%
Toyota	2.440	4,43%	2.215	5,29%	2.578	4,54%	10,16%	-5,35%	22.623	5,09%	21.987	6,06%	2,89%
Citroen	2.324	4,22%	1.323	3,16%	2.063	3,63%	75,66%	12,65%	16.238	3,65%	15.001	4,13%	8,25%
Honda	1.973	3,58%	1.137	2,72%	1.522	2,68%	73,53%	29,63%	14.233	3,20%	11.246	3,10%	26,56%
Mercedes Benz	1.089	1,98%	886	2,12%	1.026	1,81%	22,91%	6,14%	8.569	1,93%	7.674	2,11%	11,66%
Nissan	912	1,66%	356	0,85%	1.083	1,91%	156,18%	-15,79%	6.228	1,40%	2.885	0,79%	115,88%
Suzuki	496	0,90%	674	1,61%	433	0,76%	-26,41%	14,55%	5.218	1,17%	4.780	1,32%	9,16%
Hyundai	478	0,87%	229	0,55%	368	0,65%	108,73%	29,89%	3.529	0,79%	2.461	0,68%	43,40%
Audi	367	0,67%	190	0,45%	364	0,64%	93,16%	0,82%	3.036	0,68%	2.085	0,57%	45,61%
BMW	243	0,44%	203	0,48%	270	0,48%	19,70%	-10,00%	2.548	0,57%	1.596	0,44%	59,65%
Iveco	431	0,78%	186	0,44%	367	0,65%	131,72%	17,44%	2.315	0,52%	1.473	0,41%	57,16%
Dodge	244	0,44%	93	0,22%	269	0,47%	162,37%	-9,29%	2.096	0,47%	936	0,26%	123,93%
Kia	285	0,52%	204	0,49%	276	0,49%	39,71%	3,26%	1.980	0,45%	1.526	0,42%	29,75%
Chery	194	0,35%	108	0,26%	210	0,37%	79,63%	-7,62%	1.378	0,31%	883	0,24%	56,06%
Scania	124	0,23%	52	0,12%	110	0,19%	138,46%	12,73%	882	0,20%	699	0,19%	26,18%
Mitsubishi	117	0,21%	47	0,11%	76	0,13%	148,94%	53,95%	830	0,19%	496	0,14%	67,34%
Jeep	69	0,13%	47	0,11%	68	0,12%	46,81%	1,47%	701	0,16%	705	0,19%	-0,57%
Agrale	109	0,20%	46	0,11%	56	0,10%	136,96%	94,64%	590	0,13%	431	0,12%	36,89%
Chrysler	120	0,22%	65	0,16%	106	0,19%	84,62%	13,21%	583	0,13%	732	0,20%	-20,36%
Volvo	62	0,11%	34	0,08%	61	0,11%	82,35%	1,64%	440	0,10%	410	0,11%	7,32%
Randon	57	0,10%	34	0,08%	52	0,09%	67,65%	9,62%	438	0,10%	374	0,10%	17,11%
Subaru	60	0,11%	33	0,08%	59	0,10%	81,82%	1,69%	436	0,10%	252	0,07%	73,02%
Seat	76	0,14%	64	0,15%	77	0,14%	18,75%	-1,30%	408	0,09%	406	0,11%	0,49%
Mini	23	0,04%	28	0,07%	49	0,09%	-17,86%	-53,06%	357	0,08%	264	0,07%	35,23%
Puma de Tat	11	0,02%	26	0,06%	15	0,03%	-57,69%	-26,67%	198	0,04%	144	0,04%	37,50%
Alfa Romeo	19	0,03%	2	0,00%	24	0,04%	850,00%	-20,83%	163	0,04%	6	0,00%	2616,67%
MONTENEGRO	11	0,02%	9	0,02%	14	0,02%	22,22%	-21,43%	135	0,03%	147	0,04%	-8,16%
Porsche	18	0,03%	9	0,02%	11	0,02%	100,00%	63,64%	80	0,02%	57	0,02%	40,35%
Land Rover	8	0,01%	11	0,03%	9	0,02%	-27,27%	-11,11%	55	0,01%	73	0,02%	-24,66%
Montesur	3	0,01%	3	0,01%	2	0,00%	0,00%	50,00%	37	0,01%	26	0,01%	42,31%
Jaguar		0,00%		0,00%	1	0,00%	N/D	-100,00%	8	0,00%	4	0,00%	100,00%
Mack	1	0,00%	1	0,00%		0,00%	0,00%	N/D	6	0,00%	9	0,00%	-33,33%
Ferrari	1	0,00%		0,00%		0,00%	N/D	N/D	5	0,00%	4	0,00%	25,00%
Materfer	4	0,01%	6	0,01%		0,00%	-33,33%	N/D	5	0,00%	33	0,01%	-84,85%
Maserati		0,00%		0,00%		0,00%	N/D	N/D	1	0,00%		0,00%	N/D
Lexus		0,00%		0,00%		0,00%	N/D	N/D		0,00%	1	0,00%	-100,00%
Total	55.071		41.875		56.823				444.675		363.051		

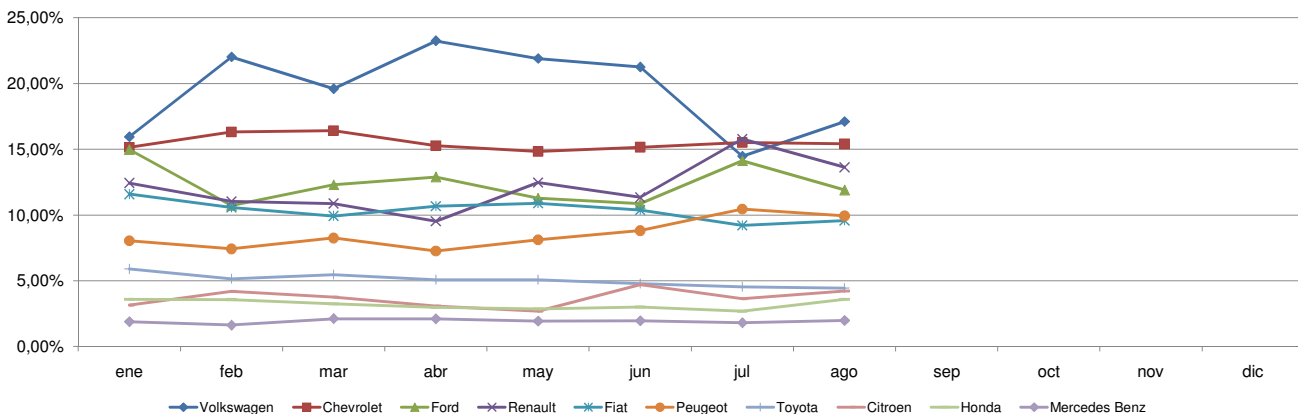


Patentamientos por Marcas - Mercado Total

Patentamientos por Marcas - Autos + Livianos									2010	2010	2009	2009	Var
Marca	ago/10(a)	Part %	ago/09(c)	Part %	jul/10(e)	Part %	Var a-c	Var a-e	ene - ago	Part %	ene - ago	Part %	2010-2009
Volkswagen	9.291	17,42%	8.421	20,69%	8.084	14,62%	10,33%	14,93%	83.913	19,39%	68.082	19,28%	23,25%
Chevrolet	8.484	15,91%	6.209	15,26%	8.811	15,94%	36,64%	-3,71%	68.848	15,91%	51.899	14,70%	32,66%
Renault	7.482	14,03%	5.204	12,79%	8.909	16,12%	43,77%	-16,02%	54.065	12,49%	44.158	12,51%	22,44%
Ford	6.265	11,75%	5.800	14,25%	7.734	13,99%	8,02%	-18,99%	53.811	12,43%	46.731	13,23%	15,15%
Fiat	5.273	9,89%	4.127	10,14%	5.234	9,47%	27,77%	0,75%	46.221	10,68%	35.749	10,12%	29,29%
Peugeot	5.467	10,25%	3.422	8,41%	5.939	10,74%	59,76%	-7,95%	38.065	8,80%	33.916	9,61%	12,23%
Toyota	2.440	4,57%	2.215	5,44%	2.578	4,66%	10,16%	-5,35%	22.623	5,23%	21.987	6,23%	2,89%
Citroen	2.324	4,36%	1.323	3,25%	2.063	3,73%	75,66%	12,65%	16.238	3,75%	15.001	4,25%	8,25%
Honda	1.973	3,70%	1.137	2,79%	1.522	2,75%	73,53%	29,63%	14.233	3,29%	11.246	3,18%	26,56%
Nissan	912	1,71%	356	0,87%	1.083	1,96%	156,18%	-15,79%	6.228	1,44%	2.885	0,82%	115,88%
Suzuki	496	0,93%	674	1,66%	433	0,78%	-26,41%	14,55%	5.218	1,21%	4.780	1,35%	9,16%
Mercedes Benz	535	1,00%	413	1,01%	578	1,05%	29,54%	-7,44%	4.477	1,03%	3.590	1,02%	24,71%
Hyundai	450	0,84%	213	0,52%	331	0,60%	111,27%	35,95%	3.342	0,77%	2.347	0,66%	42,39%
Audi	367	0,69%	190	0,47%	364	0,66%	93,16%	0,82%	3.036	0,70%	2.085	0,59%	45,61%
BMW	243	0,46%	203	0,50%	270	0,49%	19,70%	-10,00%	2.548	0,59%	1.596	0,45%	59,65%
Dodge	244	0,46%	93	0,23%	269	0,49%	162,37%	-9,29%	2.096	0,48%	936	0,27%	123,93%
Kia	285	0,53%	204	0,50%	276	0,50%	39,71%	3,26%	1.980	0,46%	1.526	0,43%	29,75%
Chery	194	0,36%	108	0,27%	210	0,38%	79,63%	-7,62%	1.378	0,32%	883	0,25%	56,06%
Mitsubishi	117	0,22%	47	0,12%	76	0,14%	148,94%	53,95%	830	0,19%	496	0,14%	67,34%
Jeep	69	0,13%	47	0,12%	68	0,12%	46,81%	1,47%	701	0,16%	705	0,20%	-0,57%
Iveco	86	0,16%	65	0,16%	86	0,16%	32,31%	0,00%	624	0,14%	544	0,15%	14,71%
Chrysler	120	0,22%	65	0,16%	106	0,19%	84,62%	13,21%	583	0,13%	732	0,21%	-20,36%
Subaru	60	0,11%	33	0,08%	59	0,11%	81,82%	1,69%	436	0,10%	252	0,07%	73,02%
Seat	76	0,14%	64	0,16%	77	0,14%	18,75%	-1,30%	408	0,09%	406	0,11%	0,49%
Mini	23	0,04%	28	0,07%	49	0,09%	-17,86%	-53,06%	357	0,08%	264	0,07%	35,23%
Volvo	18	0,03%	16	0,04%	28	0,05%	12,50%	-35,71%	185	0,04%	162	0,05%	14,20%
Alfa Romeo	19	0,04%	2	0,00%	24	0,04%	850,00%	-20,83%	163	0,04%	6	0,00%	2616,67%
Porsche	18	0,03%	9	0,02%	11	0,02%	100,00%	63,64%	80	0,02%	57	0,02%	40,35%
Land Rover	8	0,01%	11	0,03%	9	0,02%	-27,27%	-11,11%	55	0,01%	73	0,02%	-24,66%
Jaguar		0,00%		0,00%	1	0,00%	N/D	-100,00%	8	0,00%	4	0,00%	100,00%
Ferrari	1	0,00%		0,00%		0,00%	N/D	N/D	5	0,00%	4	0,00%	25,00%
Maserati		0,00%		0,00%		0,00%	N/D	N/D	1	0,00%		0,00%	N/D
Agrale		0,00%		0,00%		0,00%	N/D	N/D		0,00%	1	0,00%	-100,00%
Lexus		0,00%		0,00%		0,00%	N/D	N/D		0,00%	1	0,00%	-100,00%
Total	53.340		40.699		55.282				432.756		353.104		

Patentamientos por Marcas - Camiones + Buses									2010	2010	2009	2009	Var
Marca	ago/10(a)	Part %	ago/09(c)	Part %	jul/10(e)	Part %	Var a-c	Var a-e	ene - ago	Part %	ene - ago	Part %	2010-2009
Mercedes Benz	554	32,00%	473	40,22%	448	29,07%	17,12%	23,66%	4.092	34,33%	4.084	41,06%	0,20%
Ford	289	16,70%	223	18,96%	293	19,01%	29,60%	-1,37%	2.101	17,63%	1.686	16,95%	24,61%
Iveco	345	19,93%	121	10,29%	281	18,23%	185,12%	22,78%	1.691	14,19%	929	9,34%	82,02%
Volkswagen	126	7,28%	115	9,78%	138	8,96%	9,57%	-8,70%	1.041	8,73%	832	8,36%	25,12%
Scania	124	7,16%	52	4,42%	110	7,14%	138,46%	12,73%	882	7,40%	699	7,03%	26,18%
Agrale	109	6,30%	46	3,91%	56	3,63%	136,96%	94,64%	590	4,95%	430	4,32%	37,21%
Randon	57	3,29%	34	2,89%	52	3,37%	67,65%	9,62%	438	3,67%	374	3,76%	17,11%
Renault	23	1,33%	33	2,81%	62	4,02%	-30,30%	-62,90%	259	2,17%	192	1,93%	34,90%
Volvo	44	2,54%	18	1,53%	33	2,14%	144,44%	33,33%	255	2,14%	248	2,49%	2,82%
Puma de Tat	11	0,64%	26	2,21%	15	0,97%	-57,69%	-26,67%	198	1,66%	144	1,45%	37,50%
Hyundai	28	1,62%	16	1,36%	37	2,40%	75,00%	-24,32%	187	1,57%	114	1,15%	64,04%
MONTENEGRO	11	0,64%	9	0,77%	14	0,91%	22,22%	-21,43%	135	1,13%	147	1,48%	-8,16%
Montesur	3	0,17%	3	0,26%	2	0,13%	0,00%	50,00%	37	0,31%	26	0,26%	42,31%
Mack	1	0,06%	1	0,09%		0,00%	0,00%	N/D	6	0,05%	9	0,09%	-33,33%
Materfer	4	0,23%	6	0,51%		0,00%	-33,33%	N/D	5	0,04%	33	0,33%	-84,85%
Peugeot	2	0,12%		0,00%		0,00%	N/D	N/D	2	0,02%		0,00%	N/D
Total	1.731		1.176		1.541				11.919		9.947		

Participacion por Marcas - Evolucion Mensual

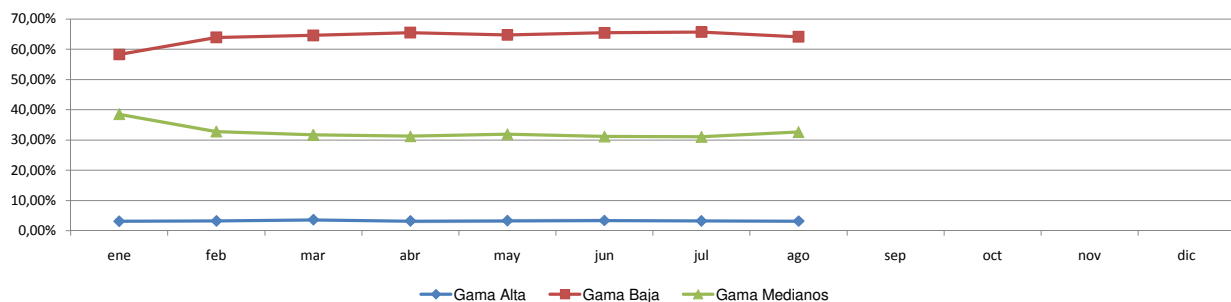




Patentamientos por Ranking de Automoviles - Mercado Total

Rank.	Ranking Por Modelos - Automoviles										
	Modelo	ago/10 (a)	ago/09 (b)	jul/10 (c)	Var a-b	Var a-c	Ac. 10	Part %	Ac. 09	Part %	Var 10-09
1	Chevrolet CORSA	3.069	2.557	3.697	20,02%	-16,99%	24.681	7,08%	20.383	7,10%	21,09%
2	Peugeot 207 COMPACT	3.014	2.101	3.699	43,46%	-18,52%	21.155	6,06%	17.560	6,11%	20,47%
3	Volkswagen GOL TREND	1.452	1.674	1.496	-13,26%	-2,94%	17.970	5,15%	15.507	5,40%	15,88%
4	Volkswagen SURAN	1.394	1.268	1.215	9,94%	14,73%	15.506	4,45%	10.808	3,76%	43,47%
5	Renault SANDERO	2.128	1.083	2.312	96,49%	-7,96%	15.179	4,35%	6.690	2,33%	126,89%
6	Ford ECOSPORT	1.589	1.506	2.228	5,51%	-28,68%	14.182	4,07%	12.820	4,46%	10,62%
7	Volkswagen GOL	1.417	1.794	1.235	-21,01%	14,74%	14.122	4,05%	12.311	4,29%	14,71%
8	Ford KA	994	1.037	1.232	-4,15%	-19,32%	9.824	2,82%	7.883	2,74%	24,62%
9	Fiat SIENA	1.328	906	1.173	46,58%	13,21%	9.397	2,69%	7.849	2,73%	19,72%
10	Renault CLIO	1.792	1.113	1.873	61,01%	-4,32%	9.089	2,61%	10.715	3,73%	-15,17%
11	Chevrolet AGILE	1.111		974	N/D	14,07%	8.493	2,43%		0,00%	N/D
12	Ford FIESTA	1.056	872	1.504	21,10%	-29,79%	8.246	2,36%	8.290	2,89%	-0,53%
13	Chevrolet AVEO	1.150	745	986	54,36%	16,63%	8.225	2,36%	3.852	1,34%	113,53%
14	Volkswagen BORA	1.178	967	776	21,82%	51,80%	8.186	2,35%	7.485	2,61%	9,37%
15	Volkswagen VOYAGE	784	906	768	-13,47%	2,08%	8.109	2,32%	6.209	2,16%	30,60%
16	Ford FOCUS II	939	524	1.060	79,20%	-11,42%	7.432	2,13%	4.098	1,43%	81,36%
17	Fiat PUNTO	686	411	691	66,91%	-0,72%	6.886	1,97%	3.230	1,12%	113,19%
18	Fiat PALIO	748	719	746	4,03%	0,27%	6.695	1,92%	6.748	2,35%	-0,79%
19	Fiat UNO	768	596	711	28,86%	8,02%	6.550	1,88%	5.942	2,07%	10,23%
20	Toyota COROLLA	676	516	713	31,01%	-5,19%	6.300	1,81%	5.550	1,93%	13,51%
21	Honda FIT	875	674	649	29,82%	34,82%	6.188	1,77%	6.158	2,14%	0,49%
22	Volkswagen FOX/CROSSFOX	1.186	648	995	83,02%	19,20%	6.188	1,77%	5.206	1,81%	18,86%
23	Citroen C4	898	610	715	47,21%	25,59%	5.886	1,69%	6.333	2,20%	-7,06%
24	Peugeot 307	621	561	599	10,70%	3,67%	5.628	1,61%	6.352	2,21%	-11,40%
25	Renault SYMBOL	672	530	1.039	26,79%	-35,32%	5.580	1,60%	3.572	1,24%	56,22%
26	Renault LOGAN	589	427	975	37,94%	-39,59%	5.238	1,50%	3.126	1,09%	67,56%
27	Chevrolet MERIVA	578	468	651	23,50%	-11,21%	5.094	1,46%	4.406	1,53%	15,62%
28	Suzuki FUN	411	532	343	-22,74%	19,83%	4.529	1,30%	2.837	0,99%	59,64%
29	Fiat PALIO WEEKEND	387	477	469	-18,87%	-17,48%	4.502	1,29%	3.733	1,30%	20,60%
30	Renault KANGOO	527	527	663	0,00%	-20,51%	4.253	1,22%	3.782	1,32%	12,45%
31	Nissan TIIDA	533	309	682	72,49%	-21,85%	4.209	1,21%	2.131	0,74%	97,51%
32	Chevrolet CORSA II	478	588	400	-18,71%	19,50%	4.142	1,19%	4.542	1,58%	-8,81%
33	Chevrolet ASTRA	572	478	435	19,67%	31,49%	4.119	1,18%	5.260	1,83%	-21,69%
34	Citroen C3	464	256	444	81,25%	4,50%	3.967	1,14%	3.150	1,10%	25,94%
35	Volkswagen VENTO	544	422	405	28,91%	34,32%	3.828	1,10%	3.258	1,13%	17,50%
36	Renault MEGANE II	330	354	342	-6,78%	-3,51%	3.799	1,09%	3.758	1,31%	1,09%
37	Honda CITY	338		370	N/D	-8,65%	3.781	1,08%		0,00%	N/D
38	Peugeot 206	536	179	378	199,44%	41,80%	3.648	1,05%	2.923	1,02%	24,80%
39	Chevrolet VECTRA	249	249	273	0,00%	-8,79%	2.533	0,73%	1.890	0,66%	34,02%
40	Citroen PICASSO	300	88	285	240,91%	5,26%	2.306	0,66%	1.561	0,54%	47,73%
41	Ford FOCUS	202	788	241	-74,37%	-16,18%	2.271	0,65%	4.942	1,72%	-54,05%
42	Chevrolet CORSA SW	62	441	81	-85,94%	-23,46%	1.838	0,53%	3.126	1,09%	-41,20%
43	Fiat IDEA	183	139	146	31,65%	25,34%	1.782	0,51%	1.557	0,54%	14,45%
44	Peugeot PARTNER	329	18	293	1727,78%	12,29%	1.634	0,47%	1.008	0,35%	62,10%
45	Dodge JOURNEY	203	57	237	256,14%	-14,35%	1.610	0,46%	549	0,19%	193,26%
46	Honda CIVIC	221	192	194	15,10%	13,92%	1.582	0,45%	2.307	0,80%	-31,43%
47	Fiat LINEA	168	210	155	-20,00%	8,39%	1.559	0,45%	976	0,34%	59,73%
48	Chevrolet ZAFIRA	164	86	187	90,70%	-12,30%	1.438	0,41%	944	0,33%	52,33%
49	Citroen BERLINGO	326	114	288	185,96%	13,19%	1.393	0,40%	1.239	0,43%	12,43%
50	Volkswagen GOL COUNTRY	184	192	129	-4,17%	42,64%	1.311	0,38%	1.730	0,60%	-24,22%
51	Otros	2.160	1.623	2.128	33,09%	1,50%	16.750	4,80%	20.926	7,29%	-19,96%
Total		42.563	33.532	44.280			348.813	1	287.212		

Autos - Participacion por Segmento





Patentamientos por Ranking de Livianos y Pesados - Mercado Total

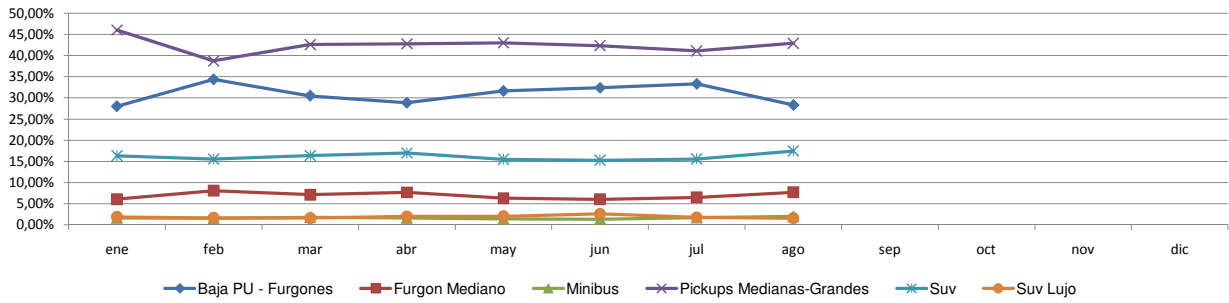
Rank.	Comercial Liviano										
	Modelo	ago/10 (a)	ago/09 (b)	jul/10 (c)	Var a-b	Var a-c	Ac. 10	Part %	Ac. 09	Part %	Var 10-09
1	Toyota HILUX	1.362	1.482	1.520	-8,10%	-10,39%	13.374	15,93%	13.708	20,80%	-2,44%
2	Ford RANGER	1.079	875	1.084	23,31%	-0,46%	9.081	10,82%	6.690	10,15%	35,74%
3	Renault KANGOO FURGON	945	718	1.264	31,62%	-25,24%	6.854	8,17%	6.009	9,12%	14,06%
4	Chevrolet S-10	864	337	822	156,38%	5,11%	6.249	7,44%	4.234	6,43%	47,59%
5	Fiat FIORINO	573	416	734	37,74%	-21,93%	5.456	6,50%	3.554	5,39%	53,52%
6	Peugeot PARTNER FURGON	641	353	627	81,59%	2,23%	4.306	5,13%	3.762	5,71%	14,46%
7	Volkswagen SAVEIRO	243	269	303	-9,67%	-19,80%	3.353	3,99%	2.410	3,66%	39,13%
8	Volkswagen AMAROK	716		549	N/D	30,42%	3.143	3,74%		0,00%	N/D
9	Honda CRV	489	217	288	125,35%	69,79%	2.378	2,83%	2.245	3,41%	5,92%
10	Citroen BERLINGO FURGON	250	176	256	42,05%	-2,34%	2.211	2,63%	2.217	3,36%	-0,27%
11	Mercedes Benz SPRINTER	270	245	262	10,20%	3,05%	2.193	2,61%	1.907	2,89%	15,00%
12	Fiat STRADA	259	112	250	131,25%	3,60%	2.058	2,45%	810	1,23%	154,07%
13	Renault MASTER	287	235	212	22,13%	35,38%	2.057	2,45%	1.817	2,76%	13,21%
14	Toyota HILUX SW4	176	145	179	21,38%	-1,68%	1.506	1,79%	1.487	2,26%	1,28%
15	Nissan FRONTIER	275	13	314	2015,38%	-12,42%	1.409	1,68%	211	0,32%	567,77%
16	Ford F 100	178	135	139	31,85%	28,06%	1.382	1,65%	1.193	1,81%	15,84%
17	Chery TIGGO	158	108	179	46,30%	-11,73%	1.304	1,55%	883	1,34%	47,68%
18	Toyota RAV 4	154	43	131	258,14%	17,56%	1.128	1,34%	861	1,31%	31,01%
19	Hyundai TUCSON	17	76	32	-77,63%	-46,88%	821	0,98%	680	1,03%	20,74%
20	Mitsubishi L200	108	27	60	300,00%	80,00%	705	0,84%	310	0,47%	127,42%
21	Otros	1.733	1.185	1.797	46,24%	-3,56%	12.975	15,46%	10.904	16,55%	18,99%
Total		10.777	7.167	11.002			83.943	1	65.892		

Rank.	Comercial Pesado										
	Modelo	ago/10 (a)	ago/09 (b)	jul/10 (c)	Var a-b	Var a-c	Ac. 10	Part %	Ac. 09	Part %	Var 10-09
1	Iveco 170 E	247	61	183	304,92%	34,97%	1.008	8,91%	455	4,84%	121,54%
2	Mercedes Benz 1418	110	40	53	175,00%	107,55%	889	7,86%	597	6,35%	48,91%
3	Ford CARGO 1722 E	103	72	102	43,06%	0,98%	761	6,73%	547	5,82%	39,12%
4	Ford F-4000	72	46	75	56,52%	-4,00%	496	4,39%	430	4,57%	15,35%
5	Mercedes Benz 1618L	88		67	N/D	31,34%	469	4,15%		0,00%	N/D
6	Mercedes Benz L-1624	23	55	26	-58,18%	-11,54%	370	3,27%	590	6,28%	-37,29%
7	Mercedes Benz 710	31	30	41	3,33%	-24,39%	308	2,72%	243	2,59%	26,75%
8	Volkswagen 17220	45	29	34	55,17%	32,35%	300	2,65%	270	2,87%	11,11%
9	Iveco 450 E	48	22	51	118,18%	-5,88%	282	2,49%	130	1,38%	116,92%
10	Mercedes Benz ATEGO 1725	43	55	34	-21,82%	26,47%	264	2,33%	303	3,22%	-12,87%
11	Scania G340	34	21	21	61,90%	61,90%	246	2,18%	234	2,49%	5,13%
12	Mercedes Benz LS 1634	32	25	25	28,00%	28,00%	232	2,05%	257	2,73%	-9,73%
13	Agrale MT12	45	20	10	125,00%	350,00%	196	1,73%	235	2,50%	-16,60%
14	Volkswagen 19320	23	14	30	64,29%	-23,33%	196	1,73%	96	1,02%	104,17%
15	Ford CARGO 712	25	26	22	-3,85%	13,64%	192	1,70%	134	1,43%	43,28%
16	Volkswagen 13180	28	25	25	12,00%	12,00%	189	1,67%	137	1,46%	37,96%
17	Mercedes Benz OF 1722	12	22	9	-45,45%	33,33%	175	1,55%	230	2,45%	-23,91%
18	Agrale MT15	33		20	N/D	65,00%	170	1,50%	11	0,12%	1445,45%
19	Ford CARGO 1517 E	24	21	18	14,29%	33,33%	167	1,48%	153	1,63%	9,15%
20	Ford CARGO 915 E	26	18	31	44,44%	-16,13%	165	1,46%	115	1,22%	43,48%
21	Otros	566	528	596	7,20%	-5,03%	4.232	37,43%	4.233	45,03%	-0,02%
Total		1.658	1.130	1.473			11.307	1	9.400		

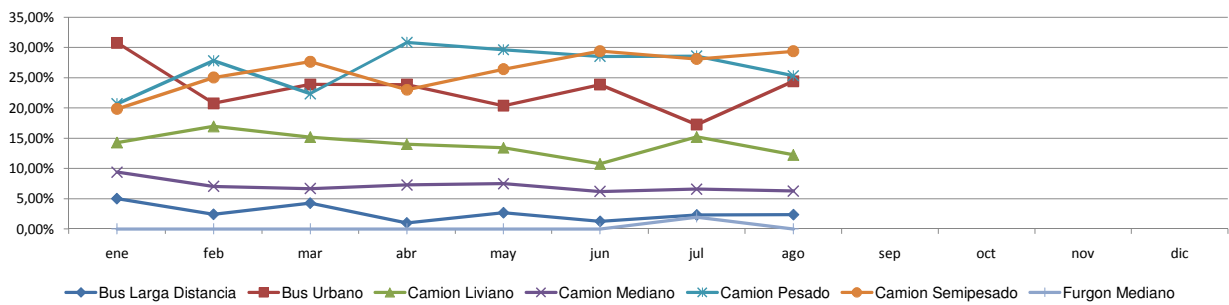


Patentamientos por Ranking de Livianos y Pesados - Mercado Total

Comercial Liviano



Comercial Pesado





Patentamientos por Provincias y Tipos -

