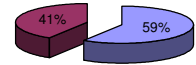




Patentamientos por Marcas - Mercado Total

	ago/08(a)	jul/08(b)	ago/07(c)	ago/06(d)	Var a-b	Var a-c	Var a-d	Ac. 08	Ac. 07	Var 08-07
Automovil	37.819	43.348	40.993	29.288	-12,75%	-7,74%	29,13%	334.379	304.654	9,76%
Comercial Liviano	10.179	11.602	9.667	7.093	-12,27%	5,30%	43,51%	86.826	73.334	18,40%
Comercial Pesado	1.856	2.160	2.343	1.723	-14,07%	-20,79%	7,72%	16.499	16.028	2,94%
Otros Pesados	1.256	1.305	1.282	1.021	-3,75%	-2,03%	23,02%	10.429	10.224	2,01%
Total	51.110	58.415	54.285	39.125	-12,51%	-5,85%	30,63%	448.133	404.240	10,86%
Prom. diario	2.434	2.782	2.468	1.778				2.716	2.435	
Dias habiles	21	21	22	22				165	166	

Patentamientos por origen		
	ago/08	Ac. 08
Importados	30.848	263.725
Nacionales	20.262	184.337



Importados Nacionales

Patentamientos Mensuales

	ene	feb	mar	abr	may	jun	jul	ago	sep	oct	nov	dic
2008	85.812	46.478	44.277	56.150	56.809	49.082	58.415	51.110				
2007	82.552	38.841	47.382	41.627	47.232	42.139	50.182	54.285	48.857	49.502	40.642	24.531
Var% 08-07	3,95%	19,66%	-6,55%	34,89%	20,28%	16,48%	16,41%	-5,85%	-100,00%	-100,00%	-100,00%	-100,00%
2006	65.986	32.427	40.404	34.253	38.288	36.572	36.959	39.125	39.649	36.010	33.255	17.731
2005	52.410	26.327	30.564	32.934	33.450	32.566	34.174	31.911	36.136	30.585	29.370	15.970

Patentamientos por Marcas - Totales

Marca	ago/08(a)		ago/07(c)		jul/08(e)		Var a-c		2008		2007		Var 2008-2007
	Part %	Part %	Part %	Part %	Part %	Part %	ene - ago	Part %	ene - ago	Part %			
Volkswagen	9.835	19,74%	10.614	20,04%	11.438	20,04%	-7,34%	-14,01%	79.685	18,22%	76.819	19,46%	3,73%
Chevrolet	7.129	14,31%	8.292	15,66%	7.785	13,64%	-14,03%	-8,43%	62.221	14,22%	59.000	14,95%	5,46%
Ford	6.114	12,27%	6.843	12,92%	7.380	12,93%	-10,65%	-17,15%	54.436	12,44%	52.482	13,30%	3,72%
Renault	4.931	9,90%	5.937	11,21%	6.352	11,13%	-16,94%	-22,37%	51.250	11,72%	49.281	12,48%	4,00%
Fiat	5.285	10,61%	5.532	10,45%	5.672	9,94%	-4,46%	-6,82%	46.787	10,70%	39.768	10,07%	17,65%
Peugeot	4.833	9,70%	4.896	9,24%	5.530	9,69%	-1,29%	-12,60%	44.839	10,25%	41.778	10,58%	7,33%
Toyota	2.709	5,44%	2.514	4,75%	3.099	5,43%	7,76%	-12,58%	22.425	5,13%	20.135	5,10%	11,37%
Citroen	1.511	3,03%	2.499	4,72%	1.699	2,98%	-39,54%	-11,07%	16.916	3,87%	14.909	3,78%	13,46%
Honda	1.702	3,42%	1.092	2,06%	1.921	3,37%	55,86%	-11,40%	14.444	3,30%	7.215	1,83%	100,19%
Mercedes Benz	1.236	2,48%	1.235	2,33%	1.394	2,44%	0,08%	-11,33%	10.460	2,39%	9.467	2,40%	10,49%
Suzuki	934	1,87%	1.117	2,11%	1.040	1,82%	-16,38%	-10,19%	6.577	1,50%	6.960	1,76%	-5,50%
Nissan	627	1,26%	348	0,66%	666	1,17%	80,17%	-5,86%	4.805	1,10%	2.320	0,59%	107,11%
Hyundai	533	1,07%	212	0,40%	610	1,07%	151,42%	-12,62%	3.518	0,80%	1.324	0,34%	165,71%
Iveco	388	0,78%	357	0,67%	406	0,71%	8,68%	-4,43%	3.304	0,76%	2.513	0,64%	31,48%
Audi	305	0,61%	267	0,50%	324	0,57%	14,23%	-5,86%	2.524	0,58%	2.034	0,52%	24,09%
Kia	355	0,71%	203	0,38%	369	0,65%	74,88%	-3,79%	2.451	0,56%	1.282	0,32%	91,19%
BMW	266	0,53%	168	0,32%	268	0,47%	58,33%	-0,75%	2.180	0,50%	1.728	0,44%	26,16%
Mitsubishi	163	0,33%	108	0,20%	183	0,32%	50,93%	-10,93%	1.367	0,31%	856	0,22%	59,70%
Jeep	146	0,29%	111	0,21%	148	0,26%	31,53%	-1,35%	1.231	0,28%	828	0,21%	48,67%
Scania	133	0,27%	161	0,30%	185	0,32%	-17,39%	-28,11%	1.188	0,27%	1.098	0,28%	8,20%
Chrysler	154	0,31%	84	0,16%	91	0,16%	83,33%	69,23%	1.055	0,24%	707	0,18%	49,22%
Volvo	90	0,18%	111	0,21%	129	0,23%	-18,92%	-30,23%	886	0,20%	574	0,15%	54,36%
Dodge	120	0,24%	46	0,09%	98	0,17%	160,87%	22,45%	771	0,18%	309	0,08%	149,51%
Agrale	72	0,14%	57	0,11%	60	0,11%	26,32%	20,00%	420	0,10%	316	0,08%	32,91%
Subaru	47	0,09%	42	0,08%	45	0,08%	11,90%	4,44%	389	0,09%	290	0,07%	34,14%
Mini	45	0,09%	37	0,07%	48	0,08%	21,62%	-6,25%	337	0,08%	275	0,07%	22,55%
Seat	51	0,10%	12	0,02%	51	0,09%	325,00%	0,00%	301	0,07%	14	0,00%	2050,00%
Puma de Tat	14	0,03%	20	0,04%	14	0,02%	-30,00%	0,00%	215	0,05%	128	0,03%	67,97%
Land Rover	18	0,04%	33	0,06%	13	0,02%	-45,45%	38,46%	167	0,04%	153	0,04%	9,15%
Porsche	7	0,01%	6	0,01%	24	0,04%	16,67%	-70,83%	150	0,03%	78	0,02%	92,31%
Chery	65	0,13%		0,00%	41	0,07%	N/D	58,54%	106	0,02%		0,00%	N/D
Alfa Romeo	2	0,00%	5	0,01%	1	0,00%	-60,00%	100,00%	27	0,01%	51	0,01%	-47,06%
Ferrari		0,00%		0,00%	3	0,01%	N/D	-100,00%	4	0,00%	4	0,00%	0,00%
Hummer		0,00%	1	0,00%		0,00%	-100,00%	N/D	2	0,00%	7	0,00%	-71,43%
Jaguar	1	0,00%		0,00%		0,00%	N/D	N/D	2	0,00%	11	0,00%	-81,82%
Lamborghini		0,00%		0,00%		0,00%	N/D	N/D	1	0,00%		0,00%	N/D
Isuzu		0,00%		0,00%		0,00%	N/D	N/D		0,00%	9	0,00%	-100,00%
Lexus		0,00%	1	0,00%		0,00%	-100,00%	N/D		0,00%	1	0,00%	-100,00%
Maserati		0,00%		0,00%		0,00%	N/D	N/D		0,00%	3	0,00%	-100,00%
Total	49.821		52.961		57.087				437.441		394.727		

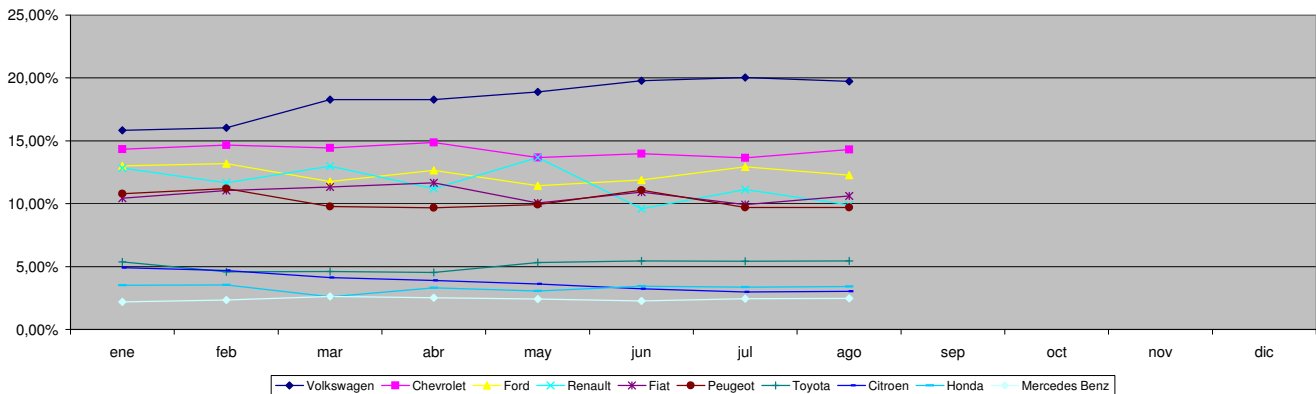


Patentamientos por Marcas - Mercado Total

Patentamientos por Marcas - Autos + Livianos								2008	2008	2007	2007	Var	
Marca	ago/08(a)	Part %	ago/07(c)	Part %	jul/08(e)	Part %	Var a-c	Var a-e	ene - ago	Part %	ene - ago	Part %	2008-2007
Volkswagen	9.610	20,02%	10.142	20,02%	11.191	20,37%	-5,25%	-14,13%	77.624	18,43%	74.410	19,69%	4,32%
Chevrolet	7.129	14,85%	8.292	16,37%	7.785	14,17%	-14,03%	-8,43%	62.221	14,77%	59.000	15,61%	5,46%
Ford	5.832	12,15%	6.355	12,54%	6.952	12,65%	-8,23%	-16,11%	51.198	12,16%	49.019	12,97%	4,45%
Renault	4.868	10,14%	5.861	11,57%	6.292	11,45%	-16,94%	-22,63%	50.785	12,06%	47.786	12,64%	6,28%
Fiat	5.285	11,01%	5.532	10,92%	5.672	10,32%	-4,46%	-6,82%	46.787	11,11%	39.768	10,52%	17,65%
Peugeot	4.833	10,07%	4.896	9,66%	5.530	10,06%	-1,29%	-12,60%	44.839	10,65%	41.778	11,05%	7,33%
Toyota	2.709	5,64%	2.514	4,96%	3.099	5,64%	7,76%	-12,58%	22.425	5,32%	20.135	5,33%	11,37%
Citroen	1.511	3,15%	2.499	4,93%	1.699	3,09%	-39,54%	-11,07%	16.916	4,02%	14.909	3,94%	13,46%
Honda	1.702	3,55%	1.092	2,16%	1.921	3,50%	55,86%	-11,40%	14.444	3,43%	7.215	1,91%	100,19%
Suzuki	934	1,95%	1.117	2,20%	1.040	1,89%	-16,38%	-10,19%	6.577	1,56%	6.960	1,84%	-5,50%
Nissan	627	1,31%	348	0,69%	666	1,21%	80,17%	-5,86%	4.805	1,14%	2.320	0,61%	107,11%
Mercedes Benz	550	1,15%	460	0,91%	634	1,15%	19,57%	-13,25%	4.784	1,14%	3.509	0,93%	36,34%
Hyundai	501	1,04%	210	0,41%	587	1,07%	138,57%	-14,65%	3.385	0,80%	1.289	0,34%	162,61%
Audi	305	0,64%	267	0,53%	324	0,59%	14,23%	-5,86%	2.524	0,60%	2.034	0,54%	24,09%
Kia	355	0,74%	203	0,40%	369	0,67%	74,88%	-3,79%	2.451	0,58%	1.216	0,32%	101,56%
BMW	266	0,55%	168	0,33%	268	0,49%	58,33%	-0,75%	2.180	0,52%	1.728	0,46%	26,16%
Mitsubishi	163	0,34%	108	0,21%	183	0,33%	50,93%	-10,93%	1.367	0,32%	856	0,23%	59,70%
Jeep	146	0,30%	111	0,22%	148	0,27%	31,53%	-1,35%	1.231	0,29%	828	0,22%	48,67%
Chrysler	154	0,32%	84	0,17%	91	0,17%	83,33%	69,23%	1.055	0,25%	707	0,19%	49,22%
Iveco	125	0,26%	155	0,31%	136	0,25%	-19,35%	-8,09%	1.005	0,24%	1.027	0,27%	-2,14%
Dodge	120	0,25%	46	0,09%	98	0,18%	160,87%	22,45%	771	0,18%	309	0,08%	149,51%
Subaru	47	0,10%	42	0,08%	45	0,08%	11,90%	4,44%	389	0,09%	290	0,08%	34,14%
Volvo	37	0,08%	63	0,12%	39	0,07%	-41,27%	-5,13%	345	0,08%	288	0,08%	19,79%
Mini	45	0,09%	37	0,07%	48	0,09%	21,62%	-6,25%	337	0,08%	275	0,07%	22,55%
Seat	51	0,11%	12	0,02%	51	0,09%	325,00%	0,00%	301	0,07%	14	0,00%	2050,00%
Land Rover	18	0,04%	33	0,07%	13	0,02%	-45,45%	38,46%	167	0,04%	153	0,04%	9,15%
Porsche	7	0,01%	6	0,01%	24	0,04%	16,67%	-70,83%	150	0,04%	78	0,02%	92,31%
Chery	65	0,14%		0,00%	41	0,07%	N/D	58,54%	106	0,03%		0,00%	N/D
Alfa Romeo	2	0,00%	5	0,01%	1	0,00%	-60,00%	100,00%	27	0,01%	51	0,01%	-47,06%
Ferrari		0,00%		0,00%	3	0,01%	N/D	-100,00%	4	0,00%	4	0,00%	0,00%
Hummer		0,00%	1	0,00%		0,00%	-100,00%	N/D	2	0,00%	7	0,00%	-71,43%
Jaguar	1	0,00%		0,00%		0,00%	N/D	N/D	2	0,00%	11	0,00%	-81,82%
Lamborghini		0,00%		0,00%		0,00%	N/D	N/D	1	0,00%		0,00%	N/D
Agrale		0,00%		0,00%		0,00%	N/D	N/D		0,00%	1	0,00%	-100,00%
Isuzu		0,00%		0,00%		0,00%	N/D	N/D		0,00%	9	0,00%	-100,00%
Lexus		0,00%	1	0,00%		0,00%	-100,00%	N/D		0,00%	1	0,00%	-100,00%
Maserati		0,00%		0,00%		0,00%	N/D	N/D		0,00%	3	0,00%	-100,00%
Total	47.998		50.660		54.950				421.205		377.988		

Patentamientos por Marcas - Camiones + Buses								2008	2008	2007	2007	Var	
Marca	ago/08(a)	Part %	ago/07(c)	Part %	jul/08(e)	Part %	Var a-c	Var a-e	ene - ago	Part %	ene - ago	Part %	2008-2007
Mercedes Benz	686	37,63%	775	33,68%	760	35,56%	-11,48%	-9,74%	5.676	34,96%	5.958	35,59%	-4,73%
Ford	282	15,47%	488	21,21%	428	20,03%	-42,21%	-34,11%	3.238	19,94%	3.463	20,69%	-6,50%
Iveco	263	14,43%	202	8,78%	270	12,63%	30,20%	-2,59%	2.299	14,16%	1.486	8,88%	54,71%
Volkswagen	225	12,34%	472	20,51%	247	11,56%	-52,33%	-8,91%	2.061	12,69%	2.409	14,39%	-14,45%
Scania	133	7,30%	161	7,00%	185	8,66%	-17,39%	-28,11%	1.188	7,32%	1.098	6,56%	8,20%
Volvo	53	2,91%	48	2,09%	90	4,21%	10,42%	-41,11%	541	3,33%	286	1,71%	89,16%
Renault	63	3,46%	76	3,30%	60	2,81%	-17,11%	5,00%	465	2,86%	1.495	8,93%	-68,90%
Agrale	72	3,95%	57	2,48%	60	2,81%	26,32%	20,00%	420	2,59%	315	1,88%	33,33%
Puma de Tat	14	0,77%	20	0,87%	14	0,66%	-30,00%	0,00%	215	1,32%	128	0,76%	67,97%
Hyundai	32	1,76%	2	0,09%	23	1,08%	1500,00%	39,13%	133	0,82%	35	0,21%	280,00%
Kia		0,00%		0,00%		0,00%	N/D	N/D		0,00%	66	0,39%	-100,00%
Total	1.823		2.301		2.137				16.236		16.739		

Participacion por Marcas - Evolucion Mensual

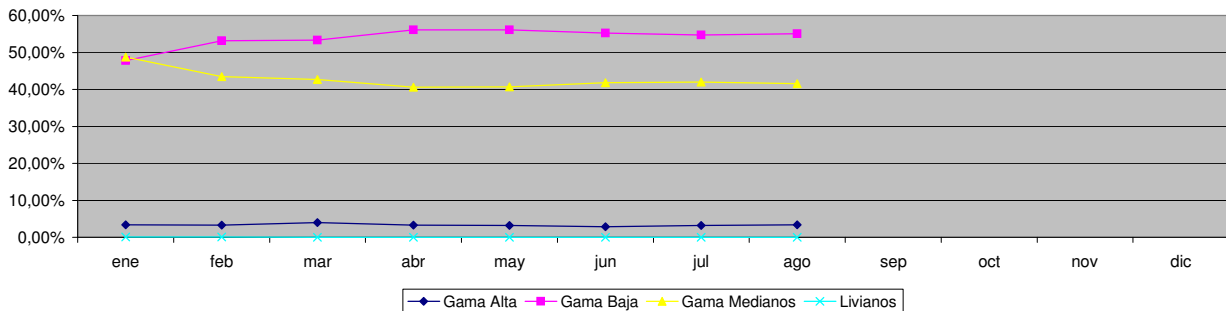




Patentamientos por Ranking de Automoviles - Mercado Total

Ranking Por Modelos - Automoviles												
Rank.	Modelo	ago/08 (a)	ago/07 (b)	jul/08 (c)	Var a-b	Var a-c	Ac. 08	Part %	Ac. 07	Part %	Var 08-07	
1	Volkswagen GOL	3.964	4.221	4.377	-6,09%	-9,44%	30.945	9,25%	29.808	9,78%	3,81%	
2	Chevrolet CORSA	2.726	3.387	3.047	-19,52%	-10,53%	25.198	7,54%	24.387	8,00%	3,33%	
3	Peugeot 206	2.674	2.138	3.176	25,07%	-15,81%	23.281	6,96%	20.064	6,59%	16,03%	
4	Ford ECOSPORT	1.462	1.747	1.657	-16,31%	-11,77%	12.820	3,83%	10.995	3,61%	16,60%	
5	Peugeot 307	1.116	1.421	1.236	-21,46%	-9,71%	12.530	3,75%	11.745	3,86%	6,68%	
6	Renault CLIO	1.299	1.707	1.737	-23,90%	-25,22%	12.180	3,64%	15.892	5,22%	-23,36%	
7	Volkswagen SURAN	1.269	1.398	1.487	-9,23%	-14,66%	11.618	3,47%	10.778	3,54%	7,79%	
8	Ford FIESTA	1.226	1.634	1.400	-24,97%	-12,43%	10.001	2,99%	11.649	3,82%	-14,15%	
9	Fiat SIENA	1.310	948	1.271	38,19%	3,07%	9.988	2,99%	7.264	2,38%	37,50%	
10	Volkswagen FOX/CROSSFOX	1.084	1.448	1.374	-25,14%	-21,11%	9.931	2,97%	9.578	3,14%	3,69%	
11	Volkswagen BORA	1.307	646	1.600	102,32%	-18,31%	8.915	2,67%	6.537	2,15%	36,38%	
12	Fiat PALIO	1.082	1.450	1.218	-25,38%	-11,17%	8.836	2,64%	10.382	3,41%	-14,89%	
13	Fiat UNO	971	1.313	933	-26,05%	4,07%	8.784	2,63%	8.064	2,65%	8,93%	
14	Renault MEGANE	845	1.142	1.032	-26,01%	-18,12%	8.490	2,54%	10.250	3,36%	-17,17%	
15	Chevrolet ASTRA	1.170	1.150	1.136	1,74%	2,99%	8.389	2,51%	7.052	2,31%	18,96%	
16	Ford FOCUS	819	762	824	7,48%	-0,61%	7.322	2,19%	7.023	2,31%	4,26%	
17	Ford KA	906	789	1.313	14,83%	-31,00%	6.774	2,03%	6.578	2,16%	2,98%	
18	Citroen C4	552	958	669	-42,38%	-17,49%	6.759	2,02%	1.286	0,42%	425,58%	
19	Chevrolet CORSA II	856	750	731	14,13%	17,10%	6.528	1,95%	6.555	2,15%	-0,41%	
20	Honda FIT	651	478	757	36,19%	-14,00%	6.088	1,82%	3.124	1,03%	94,88%	
21	Fiat PUNTO	572		688	N/D	-16,86%	5.926	1,77%		0,00%	N/D	
22	Renault KANGOO	635	553	713	14,83%	-10,94%	5.915	1,77%	3.463	1,14%	70,81%	
23	Chevrolet MERIVA	513	990	702	-48,18%	-26,92%	5.774	1,73%	6.683	2,19%	-13,60%	
24	Toyota COROLLA	734	621	937	18,20%	-21,66%	5.368	1,61%	4.968	1,63%	8,05%	
25	Suzuki FUN	782	1.017	808	-23,11%	-3,22%	5.012	1,50%	6.318	2,07%	-20,67%	
26	Honda CIVIC	449	389	575	15,42%	-21,91%	4.330	1,29%	2.274	0,75%	90,41%	
27	Volkswagen VENTO	506	455	632	11,21%	-19,94%	4.112	1,23%	3.554	1,17%	15,70%	
28	Renault MEGANE II	346	623	444	-44,46%	-22,07%	3.858	1,15%	4.798	1,57%	-19,59%	
29	Chevrolet CORSA SW	455	476	483	-4,41%	-5,80%	3.793	1,13%	4.164	1,37%	-8,91%	
30	Renault LOGAN	255	265	418	-3,77%	-39,00%	3.729	1,12%	1.126	0,37%	231,17%	
31	Citroen C3	184	600	211	-69,33%	-12,80%	3.587	1,07%	6.079	2,00%	-40,99%	
32	Fiat IDEA	297	555	411	-46,49%	-27,74%	3.387	1,01%	3.688	1,21%	-8,16%	
33	Renault SANDERO	279		365	N/D	-23,56%	3.327	0,99%		0,00%	N/D	
34	Volkswagen GOL COUNTRY	394	605	450	-34,88%	-12,44%	2.857	0,85%	3.888	1,28%	-26,52%	
35	Volkswagen POLO	308	544	371	-43,38%	-16,98%	2.830	0,85%	3.724	1,22%	-24,01%	
36	Fiat PALIO WEEKEND	135	545	141	-75,23%	-4,26%	2.722	0,81%	4.241	1,39%	-35,82%	
37	Chevrolet VECTRA	249	242	323	2,89%	-22,91%	2.620	0,78%	1.811	0,59%	44,67%	
38	Nissan TIIDA	329		319	N/D	3,13%	2.184	0,65%		0,00%	N/D	
39	Peugeot PARTNER	222	391	209	-43,22%	6,22%	2.146	0,64%	2.601	0,85%	-17,49%	
40	Citroen BERLINGO	197	278	227	-29,14%	-13,22%	2.040	0,61%	2.318	0,76%	-11,99%	
41	Citroen PICASSO	176	217	258	-18,89%	-31,78%	1.865	0,56%	2.102	0,69%	-11,27%	
42	Renault SCENIC	161	177	194	-9,04%	-17,01%	1.838	0,55%	2.258	0,74%	-18,60%	
43	Chevrolet ZAFIRA	157	158	207	-0,63%	-24,15%	1.523	0,46%	1.249	0,41%	21,94%	
44	Volkswagen GOLF	148	70	178	111,43%	-16,85%	1.451	0,43%	1.188	0,39%	22,14%	
45	Audi A3	160	129	181	24,03%	-11,60%	1.363	0,41%	990	0,32%	37,68%	
46	Mercedes Benz CLASE C	166	91	161	82,42%	3,11%	1.259	0,38%	669	0,22%	88,19%	
47	BMW 300 SERIES	119	85	121	40,00%	-1,65%	1.003	0,30%	875	0,29%	14,63%	
48	Volkswagen PASSAT	56	97	100	-42,27%	-44,00%	908	0,27%	926	0,30%	-1,94%	
49	Chrysler PT CRUISER	146	73	74	100,00%	97,30%	906	0,27%	564	0,19%	60,64%	
50	Suzuki SWIFT	89	31	119	187,10%	-25,21%	782	0,23%	243	0,08%	221,81%	
51	Otros	1.311	1.229	1.353	6,67%	-3,10%	10.587	3,17%	8.881	2,92%	19,21%	
Total		37.819	40.993	43.348			334.379	1	304.654			

Autos - Participacion por Segmento





Patentamientos por Ranking de Livianos y Pesados - Mercado Total

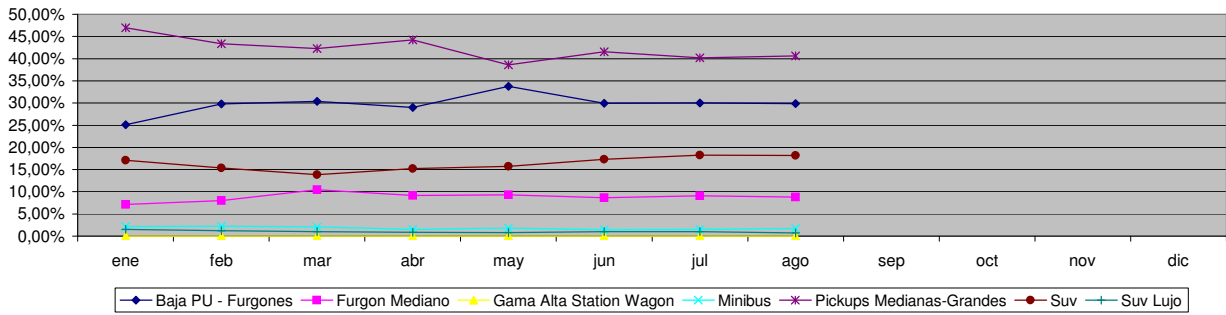
Comercial Liviano											
Rank.	Modelo	ago/08 (a)	ago/07 (b)	jul/08 (c)	Var a-b	Var a-c	Ac. 08	Part %	Ac. 07	Part %	Var 08-07
1	Toyota HILUX	1.623	1.492	1.714	8,78%	-5,31%	13.585	15,65%	12.173	16,60%	11,60%
2	Ford RANGER	1.153	1.050	1.468	9,81%	-21,46%	11.428	13,16%	10.093	13,76%	13,23%
3	Renault KANGOO FURGON	831	998	1.105	-16,73%	-24,80%	8.579	9,88%	7.662	10,45%	11,97%
4	Chevrolet S-10	808	1.084	895	-25,46%	-9,72%	6.770	7,80%	6.707	9,15%	0,94%
5	Peugeot PARTNER FURGON	632	642	731	-1,56%	-13,54%	5.027	5,79%	5.121	6,98%	-1,84%
6	Fiat FIORINO	599	413	673	45,04%	-11,00%	4.557	5,25%	3.286	4,48%	38,68%
7	Honda CRV	543	165	536	229,09%	1,31%	3.643	4,20%	1.320	1,80%	175,98%
8	Mercedes Benz SPRINTER	307	285	385	7,72%	-20,26%	2.738	3,15%	2.162	2,95%	26,64%
9	Volkswagen SAVEIRO	408	484	419	-15,70%	-2,63%	2.707	3,12%	3.096	4,22%	-12,56%
10	Citroen BERLINGO FURGON	327	415	247	-21,20%	32,39%	2.336	2,69%	2.791	3,81%	-16,30%
11	Renault MASTER	176	248	220	-29,03%	-20,00%	2.119	2,44%	1.559	2,13%	35,92%
12	Toyota HILUX SW4	170	194	209	-12,37%	-18,66%	1.811	2,09%	1.628	2,22%	11,24%
13	Ford F 100	144	304	162	-52,63%	-11,11%	1.748	2,01%	2.045	2,79%	-14,52%
14	Nissan FRONTIER	162	215	174	-24,65%	-6,90%	1.585	1,83%	1.444	1,97%	9,76%
15	Hyundai TUCSON	157	61	221	157,38%	-28,96%	1.192	1,37%	330	0,45%	261,21%
16	Chevrolet CAPTIVA	146		187	N/D	-21,93%	1.046	1,20%		0,00%	N/D
17	Mitsubishi L200	127	80	150	58,75%	-15,33%	1.015	1,17%	600	0,82%	69,17%
18	Iveco DAILY	125	155	136	-19,35%	-8,09%	991	1,14%	1.027	1,40%	-3,51%
19	Hyundai SANTA FE	124	27	127	359,26%	-2,36%	919	1,06%	241	0,33%	281,33%
20	Fiat DUCATO	53	84	87	-36,90%	-39,08%	819	0,94%	599	0,82%	36,73%
21	Otros	1.564	1.271	1.756	23,05%	-10,93%	12.211	14,06%	9.450	12,89%	29,22%
Total		10.179	9.667	11.602			86.826	1	73.334		

Comercial Pesado											
Rank.	Modelo	ago/08 (a)	ago/07 (b)	jul/08 (c)	Var a-b	Var a-c	Ac. 08	Part %	Ac. 07	Part %	Var 08-07
1	Ford CARGO 1722 E	98	134	143	-26,87%	-31,47%	1.192	7,34%	345	2,20%	245,51%
2	Iveco 170 E	111	69	119	60,87%	-6,72%	896	5,52%	489	3,12%	83,23%
3	Mercedes Benz OF 1418	133	106	122	25,47%	9,02%	863	5,32%	787	5,02%	9,66%
4	Mercedes Benz LS 1634	53	165	92	-67,88%	-42,39%	835	5,14%	1.231	7,86%	-32,17%
5	Ford F-4000	72	80	97	-10,00%	-25,77%	720	4,43%	552	3,52%	30,43%
6	Volkswagen 17220	100	141	99	-29,08%	1,01%	674	4,15%	740	4,72%	-8,92%
7	Mercedes Benz L-1624	92	169	76	-45,56%	21,05%	652	4,02%	724	4,62%	-9,94%
8	Iveco 450 E	50	85	39	-41,18%	28,21%	558	3,44%	615	3,92%	-9,27%
9	Mercedes Benz 1315	61	45	66	35,56%	-7,58%	526	3,24%	383	2,44%	37,34%
10	Mercedes Benz ATEGO 1725	63	17	70	270,59%	-10,00%	501	3,09%	23	0,15%	2078,26%
11	Ford CARGO 1832 E	36	80	44	-55,00%	-18,18%	488	3,01%	205	1,31%	138,05%
12	Mercedes Benz 710	73	51	55	43,14%	32,73%	434	2,67%	393	2,51%	10,43%
13	Mercedes Benz L1634	34	62	36	-45,16%	-5,56%	346	2,13%	538	3,43%	-35,69%
14	Volkswagen 19320	31	41	55	-24,39%	-43,64%	344	2,12%	108	0,69%	218,52%
15	Volkswagen 17250 E	35	40	49	-12,50%	-28,57%	314	1,93%	67	0,43%	368,66%
16	Iveco 490 S	52		50	N/D	4,00%	314	1,93%		0,00%	N/D
17	Mercedes Benz AXOR 1933	41	16	66	156,25%	-37,88%	305	1,88%	20	0,13%	1425,00%
18	Volkswagen 13180	8	100	14	-92,00%	-42,86%	300	1,85%	471	3,01%	-36,31%
19	Renault PREMIUM	28	50	31	-44,00%	-9,68%	288	1,77%	258	1,65%	11,63%
20	Mercedes Benz O-500	19	28	29	-32,14%	-34,48%	258	1,59%	267	1,70%	-3,37%
21	Otros	633	822	785	-22,99%	-19,36%	5.428	33,43%	7.455	47,57%	-27,19%
Total		1.823	2.301	2.137			16.236	1	15.671		

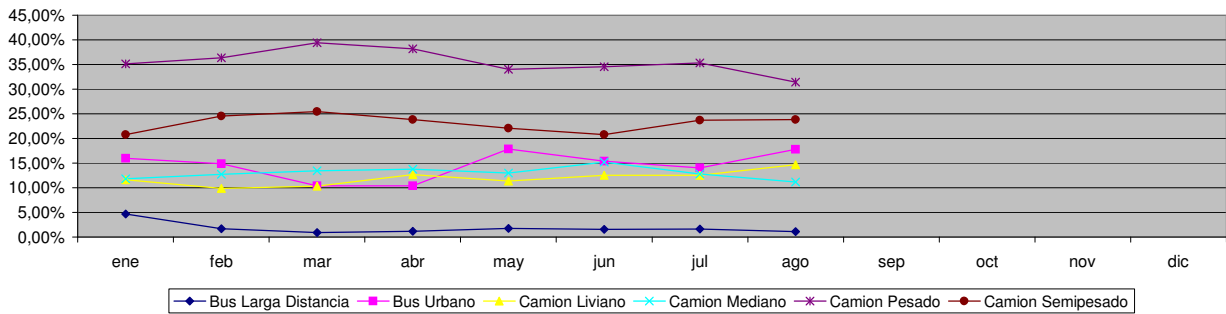


Patentamientos por Ranking de Livianos y Pesados - Mercado Total

Comercial Liviano



Comercial Pesado



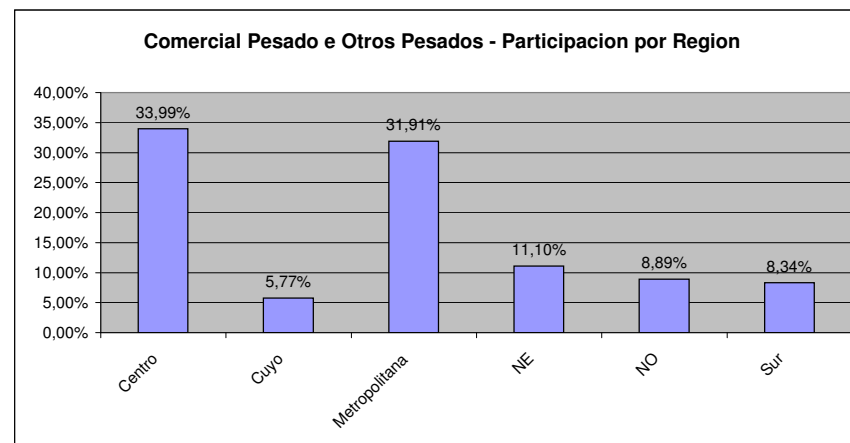
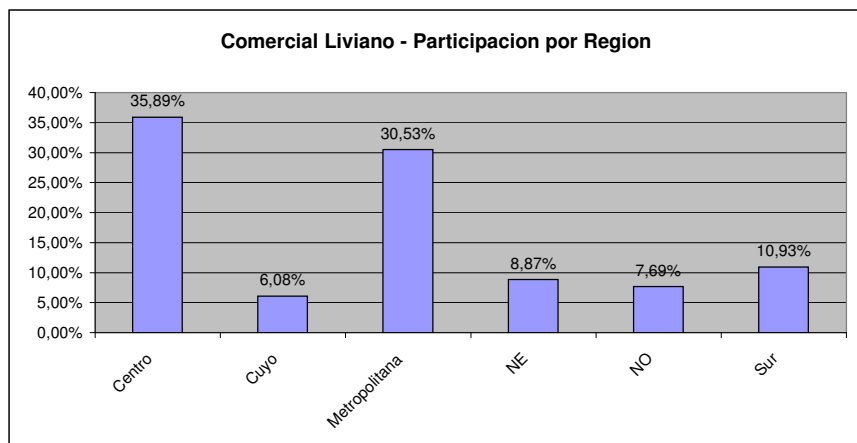
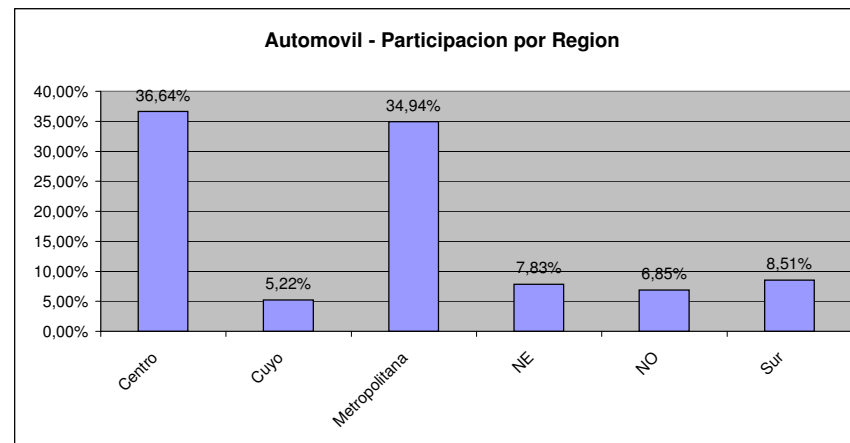
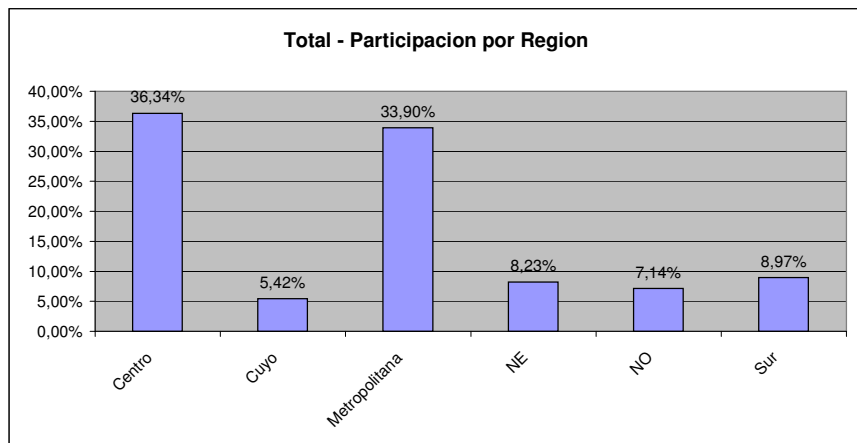


Patentamientos por Provincias y Tipos -

Distrito	Automovil+Comercial Liviano							Comercial Pesado+Otros Pesados							Mercado Total					
	ago/08 (a)	ago/07 (b)	jul/08 (c)	Var a-b	Var a-c	Ac. 08	Ac. 07	Var 08-07	ago/08 (a)	ago/07 (b)	jul/08 (c)	Var a-b	Var a-c	Ac. 08	Ac. 07	Var 08-07	Ac. 08	Ac. 07	Var 08-07	Part %
CAPITAL FEDERAL	8.856	9.762	10.209	-9,28%	-13,25%	76.287	73.708	3,50%	688	904	698	-23,89%	-1,43%	6.158	6.704	-8,14%	82.445	80.412	2,53%	18,40%
GRAN BUENOS AIRES	7.497	8.077	8.864	-7,18%	-15,42%	67.056	60.933	10,05%	272	323	353	-15,79%	-22,95%	2.435	2.645	-7,94%	69.491	63.578	9,30%	15,51%
BUENOS AIRES	7.544	7.978	8.599	-5,44%	-12,27%	65.117	59.139	10,11%	434	493	508	-11,97%	-14,57%	3.603	3.308	8,92%	68.720	62.447	10,05%	15,33%
CORDOBA	4.931	5.226	5.778	-5,64%	-14,66%	44.914	37.664	19,25%	288	339	360	-15,04%	-20,00%	2.622	2.225	17,84%	47.536	39.889	19,17%	10,61%
SANTA FE	4.597	5.008	4.845	-8,21%	-5,12%	38.630	34.464	12,09%	301	410	349	-26,59%	-13,75%	2.700	2.332	15,78%	41.330	36.796	12,32%	9,22%
MENDOZA	1.746	1.774	2.106	-1,58%	-17,09%	15.504	13.380	15,87%	141	162	144	-12,96%	-2,08%	1.135	1.180	-3,81%	16.639	14.560	14,28%	3,71%
ENTRE RIOS	1.215	1.217	1.333	-0,16%	-8,85%	10.357	9.159	13,08%	98	93	117	5,38%	-16,24%	869	783	10,98%	11.226	9.942	12,91%	2,51%
CHUBUT	1.219	1.095	1.330	11,32%	-8,35%	10.159	8.958	13,41%	127	79	83	60,76%	53,01%	841	753	11,69%	11.000	9.711	13,27%	2,45%
NEUQUEN	1.086	1.092	1.359	-0,55%	-20,09%	10.052	8.277	21,44%	77	73	61	5,48%	26,23%	598	609	-1,81%	10.650	8.886	19,85%	2,38%
SALTA	853	922	986	-7,48%	-13,49%	8.278	7.397	11,91%	89	78	99	14,10%	-10,10%	776	730	6,30%	9.054	8.127	11,41%	2,02%
TUCUMAN	931	1.017	1.156	-8,46%	-19,46%	8.377	7.470	12,14%	56	73	87	-23,29%	-35,63%	595	552	7,79%	8.972	8.022	11,84%	2,00%
CORRIENTES	823	760	902	8,29%	-8,76%	7.510	6.332	18,60%	121	109	130	11,01%	-6,92%	985	781	26,12%	8.495	7.113	19,43%	1,90%
CHACO	965	740	1.067	30,41%	-9,56%	7.785	5.717	36,17%	85	94	110	-9,57%	-22,73%	694	581	19,45%	8.479	6.298	34,63%	1,89%
SANTA CRUZ	850	726	933	17,08%	-8,90%	6.817	5.586	22,04%	55	72	31	-23,61%	77,42%	349	463	-24,62%	7.166	6.049	18,47%	1,60%
RIO NEGRO	752	773	794	-2,72%	-5,29%	6.294	6.041	4,19%	23	27	19	-14,81%	21,05%	195	214	-8,88%	6.489	6.255	3,74%	1,45%
MISIONES	509	659	611	-22,76%	-16,69%	5.209	5.263	-1,03%	43	36	42	19,44%	2,38%	304	290	4,83%	5.513	5.553	-0,72%	1,23%
LA PAMPA	575	597	578	-3,69%	-0,52%	5.031	4.286	17,38%	35	30	29	16,67%	20,69%	227	218	4,13%	5.258	4.504	16,74%	1,17%
JUJUY	426	438	497	-2,74%	-14,29%	4.285	3.735	14,73%	45	66	75	-31,82%	-40,00%	614	674	-8,90%	4.899	4.409	11,11%	1,09%
TIERRA DEL FUEGO	551	667	626	-17,39%	-11,98%	4.634	4.435	4,49%	32	35	34	-8,57%	-5,88%	263	280	-6,07%	4.897	4.715	3,86%	1,09%
SAN JUAN	471	457	563	3,06%	-16,34%	4.148	3.424	21,14%	36	33	30	9,09%	20,00%	320	277	15,52%	4.468	3.701	20,72%	1,00%
SANTIAGO DEL ESTERO	398	492	386	-19,11%	3,11%	3.809	3.360	13,36%	33	41	23	-19,51%	43,48%	229	223	2,69%	4.038	3.583	12,70%	0,90%
SAN LUIS	345	365	414	-5,48%	-16,67%	3.098	2.678	15,68%	9	20	11	-55,00%	-18,18%	98	125	-21,60%	3.196	2.803	14,02%	0,71%
FORMOSA	318	298	410	6,71%	-22,44%	3.009	2.408	24,96%	10	24	14	-58,33%	-28,57%	138	185	-25,41%	3.147	2.593	21,37%	0,70%
CATAMARCA	338	301	361	12,29%	-6,37%	2.956	2.380	24,20%	10	8	24	25,00%	-58,33%	98	72	36,11%	3.054	2.452	24,55%	0,68%
LA RIOJA	202	219	243	-7,76%	-16,87%	1.889	1.794	5,30%	4	3	34	33,33%	-88,24%	82	48	70,83%	1.971	1.842	7,00%	0,44%



Patentamientos por Provincias y Tipos -





Patentamientos por Regiones de Buenos Aires

Subregion	Automovil+Comercial Liviano								Comercial Pesado+Otros Pesados								Mercado Total		
	ago/08 (a)	ago/07 (b)	jul/08 (c)	Var a-b	Var a-c	Ac. 08	Ac. 07	Var 08-07	ago/08 (a)	ago/07 (b)	jul/08 (c)	Var a-b	Var a-c	Ac. 08	Ac. 07	Var 08-07	Ac. 08	Ac. 07	Var 08-07
GRAN BUENOS AIRES-OESTE	3.012	3.171	3.627	-5,01%	-16,96%	27.105	24.371	11,22%	108	162	138	-33,33%	-21,74%	1.030	1.097	-6,11%	28.135	25.468	10,47%
GRAN BUENOS AIRES-SUR	2.707	2.872	3.184	-5,75%	-14,98%	23.942	21.784	9,91%	126	121	171	4,13%	-26,32%	1.013	1.087	-6,81%	24.955	22.871	9,11%
GRAN BUENOS AIRES-NORTE	1.778	2.034	2.053	-12,59%	-13,40%	16.009	14.778	8,33%	38	40	44	-5,00%	-13,64%	392	461	-14,97%	16.401	15.239	7,63%
BUENOS AIRES-NORTE	1.726	1.719	1.755	0,41%	-1,65%	13.835	12.404	11,54%	99	142	129	-30,28%	-23,26%	841	771	9,08%	14.676	13.175	11,39%
BUENOS AIRES-ATLANTICA	1.212	1.394	1.511	-13,06%	-19,79%	11.980	10.861	10,30%	43	48	49	-10,42%	-12,24%	415	387	7,24%	12.395	11.248	10,20%
BUENOS AIRES-OESTE	1.278	1.295	1.432	-1,31%	-10,75%	10.714	9.869	8,56%	118	134	157	-11,94%	-24,84%	1.048	973	7,71%	11.762	10.842	8,49%
BUENOS AIRES-LA PLATA	1.293	1.449	1.554	-10,77%	-16,80%	11.042	10.832	1,94%	37	26	24	42,31%	54,17%	200	179	11,73%	11.242	11.011	2,10%
BUENOS AIRES-SUR	1.123	1.100	1.270	2,09%	-11,57%	9.500	7.874	20,65%	77	65	72	18,46%	6,94%	541	439	23,23%	10.041	8.313	20,79%
BUENOS AIRES-CENTRO	912	1.021	1.077	-10,68%	-15,32%	8.046	7.299	10,23%	60	78	77	-23,08%	-22,08%	558	559	-0,18%	8.604	7.858	9,49%



Patentamientos por Regiones de Buenos Aires

