



Patentamientos por Marcas - Mercado Total

	dic/08(a)	nov/08(b)	dic/07(c)	dic/06(d)	Var a-b	Var a-c	Var a-d	Ac. 08	Ac. 07	Var 08-07
Automovil	15.134	27.184	19.138	12.429	-44,33%	-20,92%	21,76%	456.442	426.801	6,94%
Comercial Liviano	3.439	6.188	3.878	3.743	-44,42%	-11,32%	-8,12%	117.240	103.632	13,13%
Comercial Pesado	852	1.280	906	977	-33,44%	-5,96%	-12,79%	22.890	22.969	-0,34%
Otros Pesados	466	876	606	576	-46,80%	-23,10%	-19,10%	14.208	14.350	-0,99%
Total	19.891	35.528	24.528	17.725	-44,01%	-18,90%	12,22%	610.780	567.752	7,58%
Prom. diario	1.105	1.776	1.363	933				2.473	2.289	
Dias habiles	18	20	18	19				247	248	

Patentamientos por origen		
	dic/08	Ac. 08
Importados	11.320	359.861
Nacionales	8.571	250.849



■ Importados ■ Nacionales

Patentamientos Mensuales

	ene	feb	mar	abr	may	jun	jul	ago	sep	oct	nov	dic
2008	85.811	46.477	44.277	56.149	56.809	49.082	58.414	51.110	56.197	51.036	35.528	19.891
2007	82.552	38.841	47.379	41.626	47.231	42.139	50.182	54.285	48.857	49.497	40.640	24.528
Var% 08-07	3,95%	19,66%	-6,55%	34,89%	20,28%	16,48%	16,40%	-5,85%	15,02%	3,11%	-12,58%	-18,90%
2006	65.984	32.425	40.400	34.249	38.284	36.566	36.948	39.123	39.643	36.009	33.252	17.725
2005	52.400	26.323	30.558	32.928	33.443	32.556	34.172	31.908	36.125	30.577	29.364	15.968

Patentamientos por Marcas - Totales

Marca	dic/08(a)	Part %	dic/07(c)	Part %	nov/08(e)	Part %	Var a-c	Var a-e	ene - dic	Part %	ene - dic	Part %	2008	2008	2007	2007	Var	
Volkswagen	4.158	21,41%	7.588	31,72%	6.868	19,82%	-45,20%	-39,46%	112.014	18,78%	109.179	19,70%	2008	2008	2007	2007	2,60%	
Chevrolet	3.287	16,92%	2.929	12,24%	5.433	15,68%	12,22%	-39,50%	85.617	14,35%	81.963	14,79%	2008	2008	2007	2007	4,46%	
Ford	2.216	11,41%	2.898	12,11%	4.294	12,39%	-23,53%	-48,39%	74.223	12,44%	75.729	13,66%	2008	2008	2007	2007	-1,99%	
Renault	1.933	9,95%	2.182	9,12%	4.190	12,09%	-11,41%	-53,87%	69.298	11,62%	66.964	12,08%	2008	2008	2007	2007	3,49%	
Fiat	2.217	11,41%	1.933	8,08%	3.630	10,48%	14,69%	-38,93%	63.612	10,66%	55.131	9,95%	2008	2008	2007	2007	15,38%	
Peugeot	1.945	10,01%	2.700	11,29%	3.272	9,44%	-27,96%	-40,56%	59.130	9,91%	57.923	10,45%	2008	2008	2007	2007	2,08%	
Toyota	922	4,75%	877	3,67%	1.698	4,90%	5,13%	-45,70%	30.523	5,12%	27.935	5,04%	2008	2008	2007	2007	9,26%	
Citroen	779	4,01%	742	3,10%	1.275	3,68%	4,99%	-38,90%	22.215	3,72%	21.270	3,84%	2008	2008	2007	2007	4,44%	
Honda	267	1,37%	443	1,85%	828	2,39%	-39,73%	-67,75%	18.722	3,14%	11.076	2,00%	2008	2008	2007	2007	69,03%	
Mercedes Benz	407	2,10%	465	1,94%	743	2,14%	-12,47%	-45,22%	14.552	2,44%	13.603	2,45%	2008	2008	2007	2007	6,98%	
Suzuki	383	1,97%	259	1,08%	646	1,86%	47,88%	-40,71%	9.335	1,56%	9.574	1,73%	2008	2008	2007	2007	-2,50%	
Nissan	118	0,61%	117	0,49%	252	0,73%	0,85%	-53,17%	6.234	1,05%	3.236	0,58%	2008	2008	2007	2007	92,65%	
Hyundai	110	0,57%	96	0,40%	261	0,75%	14,58%	-57,85%	4.894	0,82%	2.083	0,38%	2008	2008	2007	2007	134,95%	
Iveco	103	0,53%	144	0,60%	251	0,72%	-28,47%	-58,96%	4.467	0,75%	3.559	0,64%	2008	2008	2007	2007	25,51%	
Kia	89	0,46%	93	0,39%	198	0,57%	-4,30%	-55,05%	3.679	0,62%	1.846	0,33%	2008	2008	2007	2007	99,30%	
Audi	51	0,26%	75	0,31%	135	0,39%	-32,00%	-62,22%	3.261	0,55%	2.742	0,49%	2008	2008	2007	2007	18,93%	
BMW	26	0,13%	37	0,15%	84	0,24%	-29,73%	-69,05%	2.727	0,46%	2.264	0,41%	2008	2008	2007	2007	20,45%	
Mitsubishi	26	0,13%	44	0,18%	64	0,18%	-40,91%	-59,38%	1.728	0,29%	1.145	0,21%	2008	2008	2007	2007	50,92%	
Chrysler	25	0,13%	38	0,16%	68	0,20%	-34,21%	-63,24%	1.632	0,27%	1.030	0,19%	2008	2008	2007	2007	58,45%	
Scania	48	0,25%	49	0,20%	90	0,26%	-2,04%	-46,67%	1.629	0,27%	1.600	0,29%	2008	2008	2007	2007	1,81%	
Jeep	36	0,19%	50	0,21%	56	0,16%	-28,00%	-35,71%	1.572	0,26%	1.118	0,20%	2008	2008	2007	2007	40,61%	
Volvo	64	0,33%	64	0,27%	69	0,20%	0,00%	-7,25%	1.227	0,21%	902	0,16%	2008	2008	2007	2007	36,03%	
Dodge	35	0,18%	9	0,04%	53	0,15%	288,89%	-33,96%	1.029	0,17%	420	0,08%	2008	2008	2007	2007	145,00%	
Agrale	58	0,30%	26	0,11%	67	0,19%	123,08%	-13,43%	679	0,11%	475	0,09%	2008	2008	2007	2007	42,95%	
Subaru	12	0,06%	22	0,09%	36	0,10%	-45,45%	-66,67%	555	0,09%	411	0,07%	2008	2008	2007	2007	35,04%	
Seat	13	0,07%	6	0,03%	21	0,06%	116,67%	-38,10%	460	0,08%	75	0,01%	2008	2008	2007	2007	513,33%	
Mini	8	0,04%	15	0,06%	4	0,01%	-46,67%	100,00%	421	0,07%	379	0,07%	2008	2008	2007	2007	11,08%	
Puma de Tat	54	0,28%		0,00%	3	0,01%	N/D	1700,00%	363	0,06%	182	0,03%	2008	2008	2007	2007	99,45%	
Chery	19	0,10%		0,00%	43	0,12%	N/D	-55,81%	319	0,05%		0,00%	2008	2008	2007	2007	N/D	
Land Rover	8	0,04%	9	0,04%	9	0,03%	-11,11%	-11,11%	207	0,03%	207	0,04%	2008	2008	2007	2007	0,00%	
Porsche	3	0,02%	5	0,02%	9	0,03%	-40,00%	-66,67%	186	0,03%	115	0,02%	2008	2008	2007	2007	61,74%	
Alfa Romeo	1	0,01%	3	0,01%		0,00%	-66,67%	N/D	28	0,00%	67	0,01%	2008	2008	2007	2007	-58,21%	
Ferrari		0,00%	1	0,00%	1	0,00%	-100,00%	-100,00%	5	0,00%	6	0,00%	2008	2008	2007	2007	-16,67%	
Jaguar	2	0,01%	1	0,00%		0,00%	100,00%	N/D	4	0,00%	14	0,00%	2008	2008	2007	2007	-71,43%	
Hummer		0,00%		0,00%		0,00%	N/D	N/D	2	0,00%	7	0,00%	2008	2008	2007	2007	-71,43%	
Lexus	1	0,01%		0,00%	1	0,00%	N/D	0,00%	2	0,00%	1	0,00%	2008	2008	2007	2007	100,00%	
Lamborghini		0,00%		0,00%		0,00%	N/D	N/D	1	0,00%		0,00%	2008	2008	2007	2007	N/D	
Aston Martin		0,00%	1	0,00%		0,00%	-100,00%	N/D		0,00%	1	0,00%	2008	2008	2007	2007	-100,00%	
Isuzu		0,00%		0,00%		0,00%	N/D	N/D		0,00%	9	0,00%	2008	2008	2007	2007	-100,00%	
Maserati		0,00%		0,00%		0,00%	N/D	N/D		0,00%	3	0,00%	2008	2008	2007	2007	-100,00%	
Total	19.424		23.921		34.652				596.552		554.244							

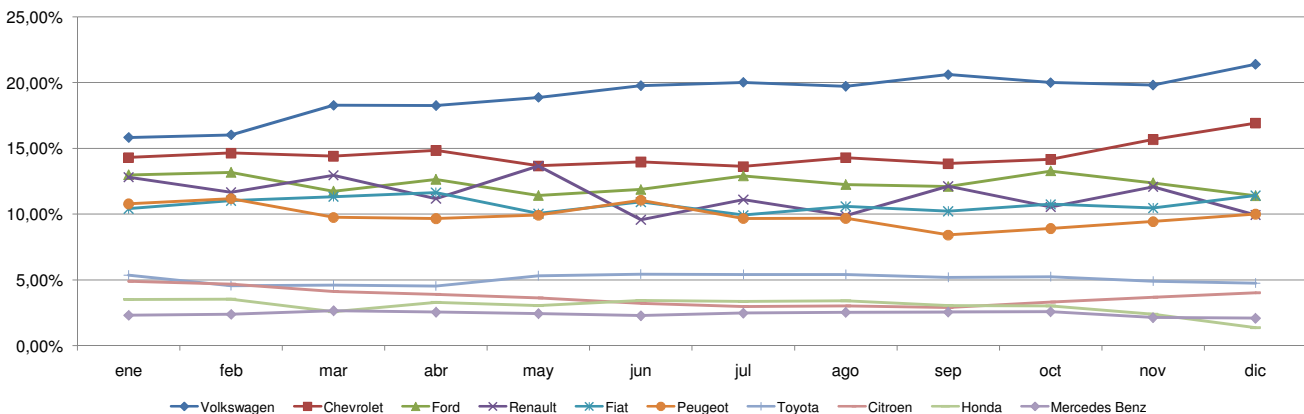


Patentamientos por Marcas - Mercado Total

Patentamientos por Marcas - Autos + Livianos										2008	2008	2007	2007	Var
Marca	dic/08(a)	Part %	dic/07(c)	Part %	nov/08(e)	Part %	Var a-c	Var a-e	ene - dic	Part %	ene - dic	Part %	2008-2007	
Volkswagen	4.074	21,94%	7.448	32,36%	6.753	20,24%	-45,30%	-39,67%	109.287	19,05%	105.691	19,93%	3,40%	
Chevrolet	3.287	17,70%	2.929	12,73%	5.433	16,28%	12,22%	-39,50%	85.617	14,92%	81.963	15,45%	4,46%	
Ford	2.005	10,80%	2.691	11,69%	4.040	12,11%	-25,49%	-50,37%	69.685	12,15%	70.808	13,35%	-1,59%	
Renault	1.919	10,33%	2.147	9,33%	4.142	12,41%	-10,62%	-53,67%	68.662	11,97%	65.474	12,34%	4,87%	
Fiat	2.217	11,94%	1.933	8,40%	3.630	10,88%	14,69%	-38,93%	63.611	11,09%	55.131	10,39%	15,38%	
Peugeot	1.945	10,47%	2.700	11,73%	3.272	9,80%	-27,96%	-40,56%	59.130	10,31%	57.923	10,92%	2,08%	
Toyota	922	4,96%	877	3,81%	1.698	5,09%	5,13%	-45,70%	30.523	5,32%	27.935	5,27%	9,26%	
Citroen	779	4,19%	742	3,22%	1.275	3,82%	4,99%	-38,90%	22.215	3,87%	21.270	4,01%	4,44%	
Honda	267	1,44%	443	1,92%	828	2,48%	-39,73%	-67,75%	18.722	3,26%	11.076	2,09%	69,03%	
Suzuki	383	2,06%	259	1,13%	646	1,94%	47,88%	-40,71%	9.335	1,63%	9.574	1,80%	-2,50%	
Mercedes Benz	152	0,82%	161	0,70%	275	0,82%	-5,59%	-44,73%	6.383	1,11%	4.718	0,89%	35,29%	
Nissan	118	0,64%	117	0,51%	252	0,76%	0,85%	-53,17%	6.234	1,09%	3.236	0,61%	92,65%	
Hyundai	107	0,58%	96	0,42%	249	0,75%	11,46%	-57,03%	4.663	0,81%	2.046	0,39%	127,91%	
Kia	89	0,48%	93	0,40%	198	0,59%	-4,30%	-55,05%	3.679	0,64%	1.846	0,35%	99,30%	
Audi	51	0,27%	75	0,33%	135	0,40%	-32,00%	-62,22%	3.261	0,57%	2.742	0,52%	18,93%	
BMW	26	0,14%	37	0,16%	84	0,25%	-29,73%	-69,05%	2.727	0,48%	2.264	0,43%	20,45%	
Mitsubishi	26	0,14%	44	0,19%	64	0,19%	-40,91%	-59,38%	1.728	0,30%	1.145	0,22%	50,92%	
Chrysler	25	0,13%	38	0,17%	68	0,20%	-34,21%	-63,24%	1.632	0,28%	1.030	0,19%	58,45%	
Jeep	36	0,19%	50	0,22%	56	0,17%	-28,00%	-35,71%	1.572	0,27%	1.118	0,21%	40,61%	
Iveco	34	0,18%	41	0,18%	75	0,22%	-17,07%	-54,67%	1.347	0,23%	1.306	0,25%	3,14%	
Dodge	35	0,19%	9	0,04%	53	0,16%	288,89%	-33,96%	1.029	0,18%	420	0,08%	145,00%	
Subaru	12	0,06%	22	0,10%	36	0,11%	-45,45%	-66,67%	555	0,10%	411	0,08%	35,04%	
Seat	13	0,07%	6	0,03%	21	0,06%	116,67%	-38,10%	460	0,08%	75	0,01%	513,33%	
Volvo	9	0,05%	23	0,10%	22	0,07%	-60,87%	-59,09%	449	0,08%	420	0,08%	6,90%	
Mini	8	0,04%	15	0,07%	4	0,01%	-46,67%	100,00%	421	0,07%	379	0,07%	11,08%	
Chery	19	0,10%		0,00%	43	0,13%	N/D	-55,81%	319	0,06%		0,00%	N/D	
Land Rover	8	0,04%	9	0,04%	9	0,03%	-11,11%	-11,11%	207	0,04%	207	0,04%	0,00%	
Porsche	3	0,02%	5	0,02%	9	0,03%	-40,00%	-66,67%	186	0,03%	115	0,02%	61,74%	
Alfa Romeo	1	0,01%	3	0,01%		0,00%	-66,67%	N/D	28	0,00%	67	0,01%	-58,21%	
Ferrari		0,00%	1	0,00%	1	0,00%	-100,00%	-100,00%	5	0,00%	6	0,00%	-16,67%	
Jaguar	2	0,01%	1	0,00%		0,00%	100,00%	N/D	4	0,00%	14	0,00%	-71,43%	
Hummer		0,00%		0,00%		0,00%	N/D	N/D	2	0,00%	7	0,00%	-71,43%	
Lexus	1	0,01%		0,00%	1	0,00%	N/D	0,00%	2	0,00%	1	0,00%	100,00%	
Agrale		0,00%		0,00%		0,00%	N/D	N/D	1	0,00%	2	0,00%	-50,00%	
Lamborghini		0,00%		0,00%		0,00%	N/D	N/D	1	0,00%		0,00%	N/D	
Aston Martin		0,00%	1	0,00%		0,00%	-100,00%	N/D		0,00%	1	0,00%	-100,00%	
Isuzu		0,00%		0,00%		0,00%	N/D	N/D		0,00%	9	0,00%	-100,00%	
Maserati		0,00%		0,00%		0,00%	N/D	N/D		0,00%	3	0,00%	-100,00%	
Total	18.573		23.016		33.372				573.682		530.433			

Patentamientos por Marcas - Camiones + Buses										2008	2008	2007	2007	Var
Marca	dic/08(a)	Part %	dic/07(c)	Part %	nov/08(e)	Part %	Var a-c	Var a-e	ene - dic	Part %	ene - dic	Part %	2008-2007	
Mercedes Benz	255	29,96%	304	33,59%	468	36,56%	-16,12%	-45,51%	8.169	35,72%	8.885	37,31%	-8,06%	
Ford	211	24,79%	207	22,87%	254	19,84%	1,93%	-16,93%	4.538	19,84%	4.921	20,67%	-7,78%	
Iveco	69	8,11%	103	11,38%	176	13,75%	-33,01%	-60,80%	3.120	13,64%	2.253	9,46%	38,48%	
Volkswagen	84	9,87%	140	15,47%	115	8,98%	-40,00%	-26,96%	2.727	11,92%	3.488	14,65%	-21,82%	
Scania	48	5,64%	49	5,41%	90	7,03%	-2,04%	-46,67%	1.629	7,12%	1.600	6,72%	1,81%	
Volvo	55	6,46%	41	4,53%	47	3,67%	34,15%	17,02%	778	3,40%	482	2,02%	61,41%	
Agrale	58	6,82%	26	2,87%	67	5,23%	123,08%	-13,43%	678	2,96%	473	1,99%	43,34%	
Renault	14	1,65%	35	3,87%	48	3,75%	-60,00%	-70,83%	636	2,78%	1.490	6,26%	-57,32%	
Puma de Tat	54	6,35%		0,00%	3	0,23%	N/D	1700,00%	363	1,59%	182	0,76%	99,45%	
Hyundai	3	0,35%		0,00%	12	0,94%	N/D	-75,00%	231	1,01%	37	0,16%	524,32%	
Fiat		0,00%		0,00%		0,00%	N/D	N/D	1	0,00%		0,00%	N/D	
Total	851		905		1.280				22.870		23.811			

Participacion por Marcas - Evolucion Mensual

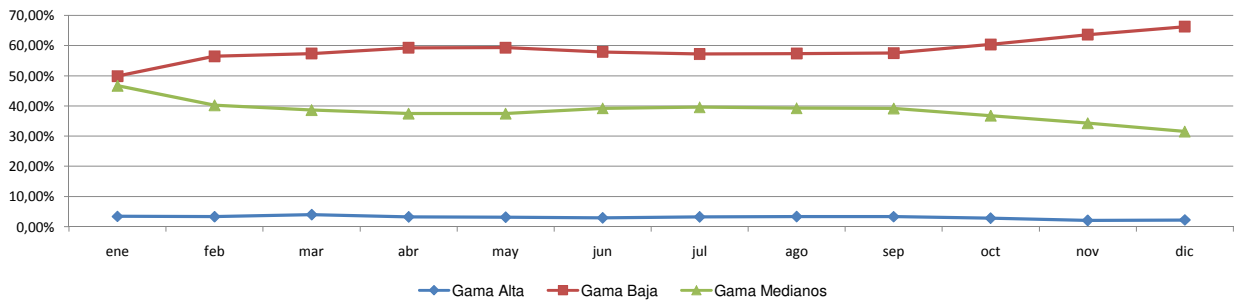




Patentamientos por Ranking de Automoviles - Mercado Total

Rank.	Ranking Por Modelos - Automoviles										
	Modelo	dic/08 (a)	dic/07 (b)	nov/08 (c)	Var a-b	Var a-c	Ac. 08	Part %	Ac. 07	Part %	Var 08-07
1	Volkswagen GOL	1.477	5.506	2.164	-73,17%	-31,75%	42.000	9,20%	44.107	10,33%	-4,78%
2	Chevrolet CORSA	1.569	1.216	2.560	29,03%	-38,71%	35.273	7,73%	33.610	7,87%	4,95%
3	Peugeot 206	266	1.338	350	-80,12%	-24,00%	26.255	5,75%	27.675	6,48%	-5,13%
4	Renault CLIO	569	530	1.697	7,36%	-66,47%	18.106	3,97%	20.741	4,86%	-12,70%
5	Ford ECOSPORT	454	776	1.023	-41,49%	-55,62%	17.566	3,85%	16.203	3,80%	8,41%
6	Peugeot 307	481	698	721	-31,09%	-33,29%	16.098	3,53%	16.340	3,83%	-1,48%
7	Volkswagen SURAN	582	606	1.123	-3,96%	-48,17%	15.964	3,50%	15.099	3,54%	5,73%
8	Fiat SIENA	627	279	811	124,73%	-22,69%	14.121	3,09%	9.671	2,27%	46,01%
9	Ford FIESTA	388	364	788	6,59%	-50,76%	14.012	3,07%	16.511	3,87%	-15,14%
10	Volkswagen FOX/CROSSFOX	275	367	561	-25,07%	-50,98%	12.819	2,81%	13.146	3,08%	-2,49%
11	Volkswagen BORA	349	222	741	57,21%	-52,90%	12.705	2,78%	8.855	2,07%	43,48%
12	Fiat PALIO	362	466	609	-22,32%	-40,56%	11.916	2,61%	13.809	3,24%	-13,71%
13	Fiat UNO	380	445	695	-14,61%	-45,32%	11.735	2,57%	11.251	2,64%	4,30%
14	Chevrolet ASTRA	287	285	553	0,70%	-48,10%	11.177	2,45%	9.482	2,22%	17,88%
15	Renault MEGANE	188	327	369	-42,51%	-49,05%	10.882	2,38%	12.579	2,95%	-13,49%
16	Ford KA	355	444	846	-20,05%	-58,04%	9.777	2,14%	10.027	2,35%	-2,49%
17	Chevrolet CORSA II	335	471	618	-28,87%	-45,79%	9.424	2,06%	9.523	2,23%	-1,04%
18	Ford FOCUS	192	270	384	-28,89%	-50,00%	9.305	2,04%	9.709	2,27%	-4,16%
19	Citroen C4	333	276	479	20,65%	-30,48%	8.510	1,86%	3.786	0,89%	124,78%
20	Renault KANGOO	220	291	461	-24,40%	-52,28%	7.873	1,72%	5.808	1,36%	35,55%
21	Honda FIT	94	237	284	-60,34%	-66,90%	7.658	1,68%	5.015	1,18%	52,70%
22	Fiat PUNTO	179	113	354	58,41%	-49,44%	7.521	1,65%	937	0,22%	702,67%
23	Chevrolet MERIVA	258	303	412	-14,85%	-37,38%	7.514	1,65%	9.055	2,12%	-17,02%
24	Toyota COROLLA	187	131	434	42,75%	-56,91%	7.432	1,63%	6.773	1,59%	9,73%
25	Suzuki FUN	313	213	516	46,95%	-39,34%	7.138	1,56%	8.525	2,00%	-16,27%
26	Honda CIVIC	79	105	311	-24,76%	-74,60%	5.717	1,25%	3.244	0,76%	76,23%
27	Volkswagen VENTO	102	145	236	-29,66%	-56,78%	5.267	1,15%	4.899	1,15%	7,51%
28	Renault MEGANE II	114	212	231	-46,23%	-50,65%	5.220	1,14%	6.826	1,60%	-23,53%
29	Chevrolet CORSA SW	167	177	275	-5,65%	-39,27%	4.983	1,09%	5.633	1,32%	-11,54%
30	Renault LOGAN	166	90	198	84,44%	-16,16%	4.780	1,05%	1.769	0,41%	170,21%
31	Citroen C3	164	157	278	4,46%	-41,01%	4.575	1,00%	7.533	1,76%	-39,27%
32	Fiat IDEA	103	159	200	-35,22%	-48,50%	4.296	0,94%	5.070	1,19%	-15,27%
33	Fiat PALIO WEEKEND	242	185	375	30,81%	-35,47%	4.282	0,94%	5.830	1,37%	-26,55%
34	Renault SANDERO	167	6	200	2683,33%	-16,50%	4.265	0,93%	6	0,00%	70983,33%
35	Volkswagen GOL COUNTRY	341	189	274	80,42%	24,45%	4.225	0,93%	5.360	1,26%	-21,18%
36	Peugeot 207 COMPACT	655		1.438	N/D	-54,45%	3.978	0,87%		0,00%	N/D
37	Volkswagen GOL TREND	502		980	N/D	-48,78%	3.718	0,81%		0,00%	N/D
38	Volkswagen POLO	116	133	174	-12,78%	-33,33%	3.703	0,81%	5.168	1,21%	-28,35%
39	Chevrolet VECTRA	85	81	136	4,94%	-37,50%	3.395	0,74%	2.785	0,65%	21,90%
40	Nissan TIIDA	71	22	148	222,73%	-52,03%	3.029	0,66%	50	0,01%	5958,00%
41	Peugeot PARTNER	79	186	122	-57,53%	-35,25%	2.772	0,61%	3.688	0,86%	-24,84%
42	Citroen BERLINGO	73	90	130	-18,89%	-43,85%	2.663	0,58%	3.071	0,72%	-13,29%
43	Citroen PICASSO	68	85	114	-20,00%	-40,35%	2.382	0,52%	2.702	0,63%	-11,84%
44	Renault SCENIC	70	79	124	-11,39%	-43,55%	2.312	0,51%	2.883	0,68%	-19,81%
45	Chevrolet ZAFIRA	77	83	112	-7,23%	-31,25%	2.042	0,45%	1.807	0,42%	13,00%
46	Volkswagen GOLF	32	75	87	-57,33%	-63,22%	1.870	0,41%	1.609	0,38%	16,22%
47	Audi A3	15	39	46	-61,54%	-67,39%	1.635	0,36%	1.304	0,31%	25,38%
48	Mercedes Benz CLASE C	15	18	34	-16,67%	-55,88%	1.611	0,35%	900	0,21%	79,00%
49	Chrysler PT CRUISER	21	28	60	-25,00%	-65,00%	1.433	0,31%	845	0,20%	69,59%
50	BMW 300 SERIES	7	10	21	-30,00%	-66,67%	1.233	0,27%	1.136	0,27%	8,54%
51	Otros	883	610	1.327	44,75%	-33,46%	18.275	4,00%	14.446	3,38%	26,51%
Total		15.134	19.138	27.184			456.442	1	426.801		

Autos - Participacion por Segmento





Patentamientos por Ranking de Livianos y Pesados - Mercado Total

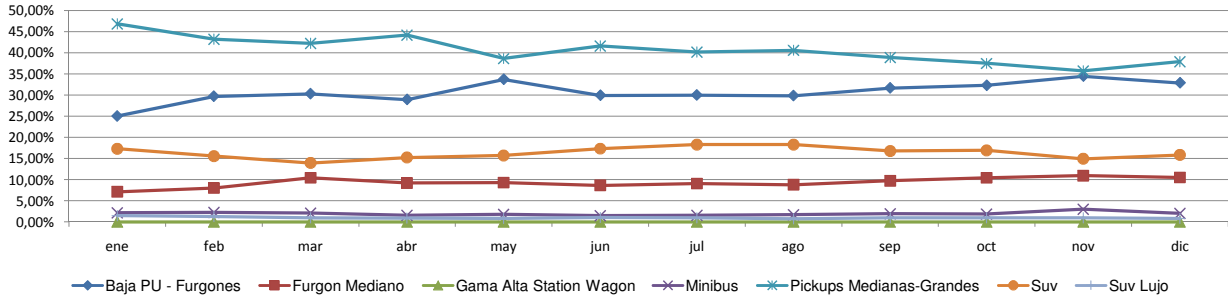
Rank.	Comercial Liviano										
	Modelo	dic/08 (a)	dic/07 (b)	nov/08 (c)	Var a-b	Var a-c	Ac. 08	Part %	Ac. 07	Part %	Var 08-07
1	Toyota HILUX	571	603	1.049	-5,31%	-45,57%	18.543	15,82%	16.964	16,37%	9,31%
2	Ford RANGER	461	711	687	-35,16%	-32,90%	14.812	12,63%	14.530	14,02%	1,94%
3	Renault KANGOO FURGON	303	402	605	-24,63%	-49,92%	11.328	9,66%	10.988	10,60%	3,09%
4	Chevrolet S-10	180	286	321	-37,06%	-43,93%	8.785	7,49%	9.511	9,18%	-7,63%
5	Peugeot PARTNER FURGON	287	291	461	-1,37%	-37,74%	7.155	6,10%	7.019	6,77%	1,94%
6	Fiat FIORINO	218	150	388	45,33%	-43,81%	6.292	5,37%	4.671	4,51%	34,70%
7	Honda CRV	72	83	193	-13,25%	-62,69%	4.779	4,08%	2.184	2,11%	118,82%
8	Volkswagen SAVEIRO	110	106	251	3,77%	-56,18%	3.906	3,33%	4.276	4,13%	-8,65%
9	Mercedes Benz SPRINTER	99	120	198	-17,50%	-50,00%	3.721	3,17%	2.934	2,83%	26,82%
10	Citroen BERLINGO FURGON	128	122	245	4,92%	-47,76%	3.594	3,07%	3.779	3,65%	-4,90%
11	Renault MASTER	83	132	219	-37,12%	-62,10%	2.887	2,46%	2.543	2,45%	13,53%
12	Toyota HILUX SW4	114	66	116	72,73%	-1,72%	2.404	2,05%	2.211	2,13%	8,73%
13	Ford F 100	46	77	67	-40,26%	-31,34%	2.145	1,83%	2.795	2,70%	-23,26%
14	Nissan FRONTIER	17	48	34	-64,58%	-50,00%	1.819	1,55%	1.993	1,92%	-8,73%
15	Hyundai TUCSON	22	24	78	-8,33%	-71,79%	1.551	1,32%	507	0,49%	205,92%
16	Chevrolet CAPTIVA	70	8	55	775,00%	27,27%	1.381	1,18%	17	0,02%	8023,53%
17	Iveco DAILY	34	41	75	-17,07%	-54,67%	1.347	1,15%	1.306	1,26%	3,14%
18	Mitsubishi L200	17	29	40	-41,38%	-57,50%	1.261	1,08%	806	0,78%	56,45%
19	Hyundai SANTA FE	27	23	40	17,39%	-32,50%	1.219	1,04%	394	0,38%	209,39%
20	Fiat DUCATO	56	52	72	7,69%	-22,22%	1.121	0,96%	907	0,88%	23,59%
21	Otros	524	504	994	3,97%	-47,28%	17.190	14,66%	13.297	12,83%	29,28%
Total		3.439	3.878	6.188			117.240	1	103.632		

Rank.	Comercial Pesado										
	Modelo	dic/08 (a)	dic/07 (b)	nov/08 (c)	Var a-b	Var a-c	Ac. 08	Part %	Ac. 07	Part %	Var 08-07
1	Ford CARGO 1722 E	29	60	86	-51,67%	-66,28%	1.541	6,74%	765	3,33%	101,44%
2	Iveco 170 E	29	53	83	-45,28%	-65,06%	1.244	5,44%	849	3,70%	46,53%
3	Mercedes Benz LS 1634	19	57	48	-66,67%	-60,42%	1.069	4,67%	1.604	6,99%	-33,35%
4	Ford F-4000	96	38	51	152,63%	88,24%	1.062	4,64%	790	3,44%	34,43%
5	Mercedes Benz OF 1418	19	21	11	-9,52%	72,73%	966	4,22%	1.121	4,88%	-13,83%
6	Mercedes Benz L-1624	15	40	73	-62,50%	-79,45%	965	4,22%	1.158	5,05%	-16,67%
7	Volkswagen 17220	26	28	45	-7,14%	-42,22%	913	3,99%	1.037	4,52%	-11,96%
8	Iveco 450 E	5	32	28	-84,38%	-82,14%	718	3,14%	870	3,79%	-17,47%
9	Mercedes Benz 1315	14	5	52	180,00%	-73,08%	706	3,09%	537	2,34%	31,47%
10	Mercedes Benz ATEGO 1725	17	24	48	-29,17%	-64,58%	691	3,02%	180	0,78%	283,89%
11	Ford CARGO 1832 E	15	51	29	-70,59%	-48,28%	629	2,75%	461	2,01%	36,44%
12	Mercedes Benz 710	7	23	25	-69,57%	-72,00%	567	2,48%	549	2,39%	3,28%
13	Volkswagen 19320	7	11	19	-36,36%	-63,16%	448	1,96%	201	0,88%	122,89%
14	Iveco 490 S	16		34	N/D	-52,94%	447	1,95%		0,00%	N/D
15	Mercedes Benz L1634	8	19	28	-57,89%	-71,43%	440	1,92%	716	3,12%	-38,55%
16	Volkswagen 17250 E	13	8	18	62,50%	-27,78%	440	1,92%	204	0,89%	115,69%
17	Mercedes Benz AXOR 1933	10	5	20	100,00%	-50,00%	411	1,80%	104	0,45%	295,19%
18	Mercedes Benz OF 1722	3	3	21	0,00%	-85,71%	409	1,79%	273	1,19%	49,82%
19	Mercedes Benz O-500	36	31	27	16,13%	33,33%	404	1,77%	422	1,84%	-4,27%
20	Renault PREMIUM	12	23	27	-47,83%	-55,56%	393	1,72%	392	1,71%	0,26%
21	Otros	455	373	507	21,98%	-10,26%	8.407	36,76%	10.717	46,70%	-21,55%
Total		851	905	1.280			22.870	1	22.950		

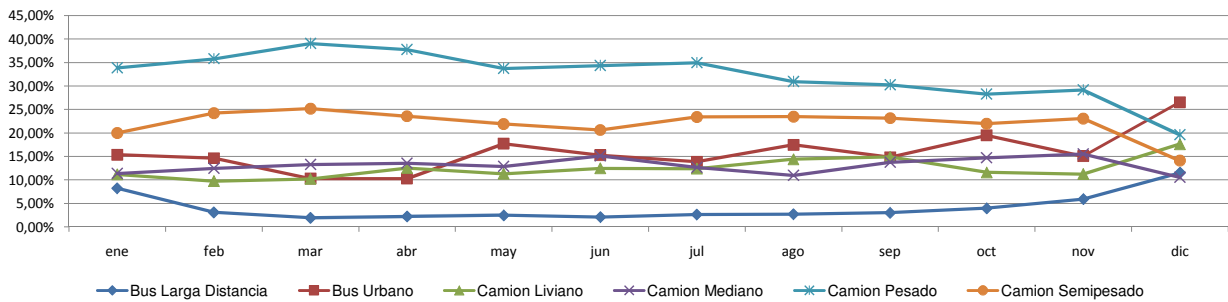


Patentamientos por Ranking de Livianos y Pesados - Mercado Total

Comercial Liviano



Comercial Pesado





Patentamientos por Provincias y Tipos -

