



**Patentamientos por Marcas - Mercado Total**

	nov/08(a)	oct/08(b)	nov/07(c)	nov/06(d)	Var a-b	Var a-c	Var a-d	Ac. 08	Ac. 07	Var 08-07
<b>Automovil</b>	26.426	38.318	29.708	24.645	-31,04%	-11,05%	7,23%	440.550	407.663	8,07%
<b>Comercial Liviano</b>	6.009	9.489	7.997	6.162	-36,67%	-24,86%	-2,48%	113.621	99.641	14,03%
<b>Comercial Pesado</b>	1.255	2.070	1.787	1.376	-39,37%	-29,77%	-8,79%	22.015	22.176	-0,73%
<b>Otros Pesados</b>	854	1.159	1.148	1.068	-26,32%	-25,61%	-20,04%	13.720	13.744	-0,17%
<b>Total</b>	<b>34.544</b>	<b>51.036</b>	<b>40.640</b>	<b>33.251</b>	<b>-32,31%</b>	<b>-15,00%</b>	<b>3,89%</b>	<b>589.906</b>	<b>543.224</b>	<b>8,59%</b>
<b>Prom. diario</b>	1.727	2.320	1.847	1.511				2.576	2.362	
<b>Dias habiles</b>	20	22	22	22				229	230	

Patentamientos por origen		
	08-Nov	Ac. 08
Importados	19.482	348.011
Nacionales	15.062	241.825



■ Importados ■ Nacionales

**Patentamientos Mensuales**

	ene	feb	mar	abr	may	jun	jul	ago	sep	oct	nov	dic
2008	85.811	46.477	44.277	56.149	56.809	49.082	58.414	51.110	56.197	51.037	34.544	
2007	82.552	38.841	47.379	41.626	47.231	42.139	50.182	54.285	48.857	49.497	40.640	24.528
<b>Var% 08-07</b>	<b>3,95%</b>	<b>19,66%</b>	<b>-6,55%</b>	<b>34,89%</b>	<b>20,28%</b>	<b>16,48%</b>	<b>16,40%</b>	<b>-5,85%</b>	<b>15,02%</b>	<b>3,11%</b>	<b>-15,00%</b>	<b>-100,00%</b>
2006	65.984	32.425	40.400	34.249	38.284	36.567	36.949	39.123	39.643	36.009	33.252	17.725
2005	52.400	26.323	30.558	32.929	33.443	32.556	34.172	31.908	36.126	30.578	29.364	15.968

**Patentamientos por Marcas - Totales**

Marca	nov/08(a)		nov/07(c)		oct/08(e)		Var a-c		2008		2007		2008-2007
	Part %	Part %	Part %	Part %	Var a-e	ene - nov	Part %	ene - nov	Part %				
Volkswagen	6.696	19,89%	6.735	17,08%	9.978	20,01%	-0,58%	-32,89%	107.684	18,70%	101.591	19,17%	6,00%
Chevrolet	5.286	15,70%	5.577	14,14%	7.071	14,18%	-5,22%	-25,24%	82.183	14,27%	79.034	14,92%	3,98%
Ford	4.190	12,45%	6.243	15,83%	6.627	13,29%	-32,88%	-36,77%	71.903	12,49%	72.831	13,75%	-1,27%
Renault	3.982	11,83%	4.827	12,24%	5.260	10,55%	-17,51%	-24,30%	67.157	11,66%	64.782	12,23%	3,67%
Fiat	3.542	10,52%	4.026	10,21%	5.361	10,75%	-12,02%	-33,93%	61.306	10,65%	53.198	10,04%	15,24%
Peugeot	3.185	9,46%	4.219	10,70%	4.448	8,92%	-24,51%	-28,39%	57.098	9,92%	55.223	10,42%	3,40%
Toyota	1.665	4,95%	1.926	4,88%	2.623	5,26%	-13,55%	-36,52%	29.568	5,13%	27.058	5,11%	9,28%
Citroen	1.240	3,68%	1.725	4,37%	1.653	3,32%	-28,12%	-24,98%	21.401	3,72%	20.528	3,87%	4,25%
Honda	818	2,43%	1.033	2,62%	1.513	3,03%	-20,81%	-45,94%	18.445	3,20%	10.633	2,01%	73,47%
Mercedes Benz	706	2,10%	835	2,12%	1.274	2,56%	-15,45%	-44,58%	13.824	2,40%	12.683	2,39%	9,00%
Suzuki	628	1,87%	572	1,45%	824	1,65%	9,79%	-23,79%	8.934	1,55%	9.315	1,76%	-4,09%
Nissan	242	0,72%	206	0,52%	383	0,77%	17,48%	-36,81%	6.106	1,06%	3.119	0,59%	95,77%
Hyundai	257	0,76%	214	0,54%	435	0,87%	20,09%	-40,92%	4.780	0,83%	1.987	0,38%	140,56%
Iveco	242	0,72%	257	0,65%	396	0,79%	-5,84%	-38,89%	4.356	0,76%	3.415	0,64%	27,55%
Kia	192	0,57%	127	0,32%	459	0,92%	51,18%	-58,17%	3.584	0,62%	1.753	0,33%	104,45%
Audi	132	0,39%	152	0,39%	285	0,57%	-13,16%	-53,68%	3.207	0,56%	2.667	0,50%	20,25%
BMW	80	0,24%	107	0,27%	186	0,37%	-25,23%	-56,99%	2.697	0,47%	2.227	0,42%	21,10%
Mitsubishi	64	0,19%	97	0,25%	134	0,27%	-34,02%	-52,24%	1.702	0,30%	1.101	0,21%	54,59%
Chrysler	67	0,20%	77	0,20%	197	0,40%	-12,99%	-65,99%	1.606	0,28%	992	0,19%	61,90%
Scania	88	0,26%	158	0,40%	136	0,27%	-44,30%	-35,29%	1.579	0,27%	1.551	0,29%	1,81%
Jeep	56	0,17%	71	0,18%	107	0,21%	-21,13%	-47,66%	1.536	0,27%	1.068	0,20%	43,82%
Volvo	65	0,19%	103	0,26%	111	0,22%	-36,89%	-41,44%	1.159	0,20%	836	0,16%	38,64%
Dodge	52	0,15%	8	0,02%	35	0,07%	550,00%	48,57%	993	0,17%	411	0,08%	141,61%
Agrale	67	0,20%	49	0,12%	65	0,13%	36,73%	3,08%	622	0,11%	449	0,08%	38,53%
Subaru	35	0,10%	23	0,06%	52	0,10%	52,17%	-32,69%	542	0,09%	389	0,07%	39,33%
Seat	20	0,06%	17	0,04%	52	0,10%	17,65%	-61,54%	446	0,08%	69	0,01%	546,38%
Mini	4	0,01%	17	0,04%	31	0,06%	-76,47%	-87,10%	413	0,07%	364	0,07%	13,46%
Puma de Tat	3	0,01%	11	0,03%	69	0,14%	-72,73%	-95,65%	309	0,05%	182	0,03%	69,78%
Chery	40	0,12%		0,00%	74	0,15%	N/D	-45,95%	297	0,05%		0,00%	N/D
Land Rover	8	0,02%	10	0,03%	11	0,02%	-20,00%	-27,27%	198	0,03%	198	0,04%	0,00%
Porsche	9	0,03%	8	0,02%	11	0,02%	12,50%	-18,18%	183	0,03%	110	0,02%	66,36%
Alfa Romeo		0,00%	5	0,01%		0,00%	-100,00%	N/D	27	0,00%	64	0,01%	-57,81%
Ferrari	1	0,00%		0,00%		0,00%	N/D	N/D	5	0,00%	5	0,00%	0,00%
Hummer		0,00%		0,00%		0,00%	N/D	N/D	2	0,00%	7	0,00%	-71,43%
Jaguar		0,00%	1	0,00%		0,00%	-100,00%	N/D	2	0,00%	13	0,00%	-84,62%
Lamborghini		0,00%		0,00%		0,00%	N/D	N/D	1	0,00%		0,00%	N/D
Lexus	1	0,00%		0,00%		0,00%	N/D	N/D	1	0,00%	1	0,00%	0,00%
Isuzu		0,00%		0,00%		0,00%	N/D	N/D		0,00%	9	0,00%	-100,00%
Maserati		0,00%		0,00%		0,00%	N/D	N/D		0,00%	3	0,00%	-100,00%
<b>Total</b>	<b>33.663</b>		<b>39.436</b>		<b>49.861</b>				<b>575.856</b>		<b>529.866</b>		

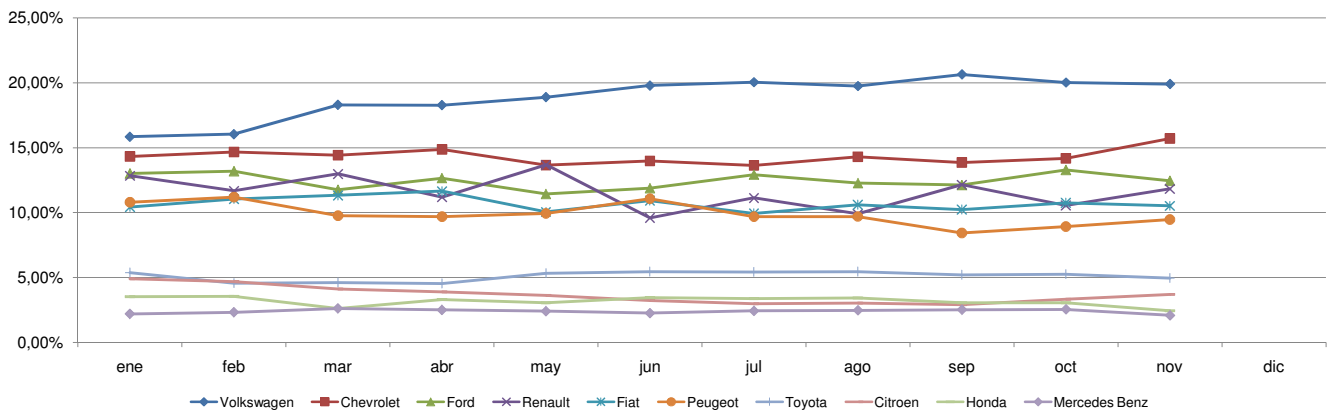


**Patentamientos por Marcas - Mercado Total**

Patentamientos por Marcas - Autos + Livianos								2008	2008	2007	2007	Var	
Marca	nov/08(a)	Part %	nov/07(c)	Part %	oct/08(e)	Part %	Var a-c	Var a-e	ene - nov	Part %	ene - nov	Part %	2008-2007
Volkswagen	6.581	20,29%	6.512	17,27%	9.763	20,42%	1,06%	-32,59%	105.041	18,95%	98.243	19,37%	6,92%
Chevrolet	5.286	16,30%	5.577	14,79%	7.071	14,79%	-5,22%	-25,24%	82.183	14,83%	79.034	15,58%	3,98%
Ford	3.946	12,17%	5.811	15,41%	6.245	13,06%	-32,09%	-36,81%	67.586	12,20%	68.117	13,43%	-0,78%
Renault	3.934	12,13%	4.760	12,62%	5.192	10,86%	-17,35%	-24,23%	66.534	12,01%	63.214	12,46%	5,25%
Fiat	3.542	10,92%	4.026	10,68%	5.361	11,21%	-12,02%	-33,93%	61.306	11,06%	53.198	10,49%	15,24%
Peugeot	3.185	9,82%	4.219	11,19%	4.448	9,30%	-24,51%	-28,39%	57.098	10,30%	55.223	10,89%	3,40%
Toyota	1.665	5,13%	1.926	5,11%	2.623	5,49%	-13,55%	-36,52%	29.568	5,34%	27.058	5,33%	9,28%
Citroen	1.240	3,82%	1.725	4,57%	1.653	3,46%	-28,12%	-24,98%	21.401	3,86%	20.528	4,05%	4,25%
Honda	818	2,52%	1.033	2,74%	1.513	3,16%	-20,81%	-45,94%	18.445	3,33%	10.633	2,10%	73,47%
Suzuki	628	1,94%	572	1,52%	824	1,72%	9,79%	-23,79%	8.934	1,61%	9.315	1,84%	-4,09%
Mercedes Benz	271	0,84%	294	0,78%	550	1,15%	-7,82%	-50,73%	6.227	1,12%	4.557	0,90%	36,65%
Nissan	242	0,75%	206	0,55%	383	0,80%	17,48%	-36,81%	6.106	1,10%	3.119	0,61%	95,77%
Hyundai	247	0,76%	214	0,57%	399	0,83%	15,42%	-38,10%	4.554	0,82%	1.950	0,38%	133,54%
Kia	192	0,59%	127	0,34%	459	0,96%	51,18%	-58,17%	3.584	0,65%	1.753	0,35%	104,45%
Audi	132	0,41%	152	0,40%	285	0,60%	-13,16%	-53,68%	3.207	0,58%	2.667	0,53%	20,25%
BMW	80	0,25%	107	0,28%	186	0,39%	-25,23%	-56,99%	2.697	0,49%	2.227	0,44%	21,10%
Mitsubishi	64	0,20%	97	0,26%	134	0,28%	-34,02%	-52,24%	1.702	0,31%	1.101	0,22%	54,59%
Chrysler	67	0,21%	77	0,20%	197	0,41%	-12,99%	-65,99%	1.606	0,29%	992	0,20%	61,90%
Jeep	56	0,17%	71	0,19%	107	0,22%	-21,13%	-47,66%	1.536	0,28%	1.068	0,21%	43,82%
Iveco	69	0,21%	73	0,19%	114	0,24%	-17,65%	-39,47%	1.307	0,24%	1.265	0,25%	3,32%
Dodge	52	0,16%	8	0,02%	35	0,07%	550,00%	48,57%	993	0,18%	411	0,08%	141,61%
Subaru	35	0,11%	23	0,06%	52	0,11%	52,17%	-32,69%	542	0,10%	389	0,08%	39,33%
Seat	20	0,06%	17	0,05%	52	0,11%	17,65%	-61,54%	446	0,08%	69	0,01%	546,38%
Volvo	20	0,06%	37	0,10%	34	0,07%	-45,95%	-41,18%	438	0,08%	397	0,08%	10,33%
Mini	4	0,01%	17	0,05%	31	0,06%	-76,47%	-87,10%	413	0,07%	364	0,07%	13,46%
Chery	40	0,12%		0,00%	74	0,15%	N/D	-45,95%	297	0,05%		0,00%	N/D
Land Rover	8	0,02%	10	0,03%	11	0,02%	-20,00%	-27,27%	198	0,04%	198	0,04%	0,00%
Porsche	9	0,03%	8	0,02%	11	0,02%	12,50%	-18,18%	183	0,03%	110	0,02%	66,36%
Alfa Romeo		0,00%	5	0,01%		0,00%	-100,00%	N/D	27	0,00%	64	0,01%	-57,81%
Ferrari	1	0,00%		0,00%		0,00%	N/D	N/D	5	0,00%	5	0,00%	0,00%
Hummer		0,00%		0,00%		0,00%	N/D	N/D	2	0,00%	7	0,00%	-71,43%
Jaguar		0,00%	1	0,00%		0,00%	-100,00%	N/D	2	0,00%	13	0,00%	-84,62%
Agrale		0,00%		0,00%		0,00%	N/D	N/D	1	0,00%	2	0,00%	-50,00%
Lamborghini		0,00%		0,00%		0,00%	N/D	N/D	1	0,00%		0,00%	N/D
Lexus	1	0,00%		0,00%		0,00%	N/D	N/D	1	0,00%	1	0,00%	0,00%
Isuzu		0,00%		0,00%		0,00%	N/D	N/D		0,00%	9	0,00%	-100,00%
Maserati		0,00%		0,00%		0,00%	N/D	N/D		0,00%	3	0,00%	-100,00%
<b>Total</b>	<b>32.435</b>		<b>37.705</b>		<b>47.807</b>				<b>554.171</b>		<b>507.304</b>		

Patentamientos por Marcas - Camiones + Buses								2008	2008	2007	2007	Var	
Marca	nov/08(a)	Part %	nov/07(c)	Part %	oct/08(e)	Part %	Var a-c	Var a-e	ene - nov	Part %	ene - nov	Part %	2008-2007
Mercedes Benz	435	35,42%	541	31,25%	724	35,25%	-19,59%	-39,92%	7.597	35,03%	8.126	36,02%	-6,51%
Ford	244	19,87%	432	24,96%	382	18,60%	-43,52%	-36,13%	4.317	19,91%	4.714	20,89%	-8,42%
Iveco	173	14,09%	184	10,63%	282	13,73%	-5,98%	-38,65%	3.049	14,06%	2.150	9,53%	41,81%
Volkswagen	115	9,36%	223	12,88%	215	10,47%	-48,43%	-46,51%	2.643	12,19%	3.348	14,84%	-21,06%
Scania	88	7,17%	158	9,13%	136	6,62%	-44,30%	-35,29%	1.579	7,28%	1.551	6,87%	1,81%
Volvo	45	3,66%	66	3,81%	77	3,75%	-31,82%	-41,56%	721	3,32%	439	1,95%	64,24%
Renault	48	3,91%	67	3,87%	68	3,31%	-28,36%	-29,41%	623	2,87%	1.568	6,95%	-60,27%
Agrale	67	5,46%	49	2,83%	65	3,16%	36,73%	3,08%	621	2,86%	447	1,98%	38,93%
Puma de Tat	3	0,24%	11	0,64%	69	3,36%	-72,73%	-95,65%	309	1,42%	182	0,81%	69,78%
Hyundai	10	0,81%		0,00%	36	1,75%	N/D	-72,22%	226	1,04%	37	0,16%	510,81%
<b>Total</b>	<b>1.228</b>		<b>1.731</b>		<b>2.054</b>				<b>21.685</b>		<b>22.562</b>		

**Participacion por Marcas - Evolucion Mensual**

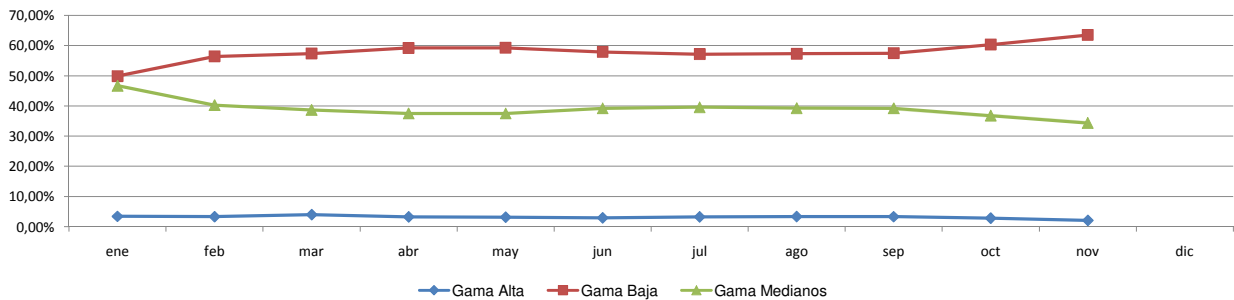




**Patentamientos por Ranking de Automoviles - Mercado Total**

Rank.	Ranking Por Modelos - Automoviles										
	Modelo	nov/08 (a)	nov/07 (b)	oct/08 (c)	Var a-b	Var a-c	Ac. 08	Part %	Ac. 07	Part %	Var 08-07
1	Volkswagen GOL	2.109	2.589	3.226	-18,54%	-34,62%	40.468	9,19%	38.601	9,47%	4,84%
2	Chevrolet CORSA	2.499	2.172	2.940	15,06%	-15,00%	33.643	7,64%	32.394	7,95%	3,86%
3	Peugeot 206	343	2.069	602	-83,42%	-43,02%	25.982	5,90%	26.337	6,46%	-1,35%
4	Renault CLIO	1.608	1.212	1.744	32,67%	-7,80%	17.448	3,96%	20.211	4,96%	-13,67%
5	Ford ECOSPORT	997	1.186	1.750	-15,94%	-43,03%	17.086	3,88%	15.427	3,78%	10,75%
6	Peugeot 307	700	1.146	1.028	-38,92%	-31,91%	15.596	3,54%	15.642	3,84%	-0,29%
7	Volkswagen SURAN	1.100	1.027	1.267	7,11%	-13,18%	15.359	3,49%	14.493	3,56%	5,98%
8	Ford FIESTA	775	1.237	1.399	-37,35%	-44,60%	13.611	3,09%	16.147	3,96%	-15,71%
9	Fiat SIENA	791	701	1.383	12,84%	-42,81%	13.474	3,06%	9.392	2,30%	43,46%
10	Volkswagen FOX/CROSSFOX	543	685	931	-20,73%	-41,68%	12.526	2,84%	12.779	3,13%	-1,98%
11	Volkswagen BORA	723	587	1.245	23,17%	-41,93%	12.338	2,80%	8.633	2,12%	42,92%
12	Fiat PALIO	590	831	907	-29,00%	-34,95%	11.535	2,62%	13.343	3,27%	-13,55%
13	Fiat UNO	682	755	923	-9,27%	-26,11%	11.342	2,57%	10.806	2,65%	4,96%
14	Chevrolet ASTRA	537	641	902	-16,22%	-40,47%	10.874	2,47%	9.197	2,26%	18,23%
15	Renault MEGANE	348	674	698	-48,37%	-50,14%	10.673	2,42%	12.252	3,01%	-12,89%
16	Ford KA	829	990	967	-16,26%	-14,27%	9.405	2,13%	9.583	2,35%	-1,86%
17	Ford FOCUS	376	725	715	-48,14%	-47,41%	9.105	2,07%	9.439	2,32%	-3,54%
18	Chevrolet CORSA II	598	736	875	-18,75%	-31,66%	9.069	2,06%	9.052	2,22%	0,19%
19	Citroen C4	462	776	434	-40,46%	6,45%	8.160	1,85%	3.510	0,86%	132,48%
20	Renault KANGOO	439	623	570	-29,53%	-22,98%	7.631	1,73%	5.517	1,35%	38,32%
21	Honda FIT	279	532	600	-47,56%	-53,50%	7.559	1,72%	4.778	1,17%	58,20%
22	Fiat PUNTO	345	377	520	-8,49%	-33,65%	7.333	1,66%	824	0,20%	789,93%
23	Chevrolet MERIVA	400	563	538	-28,95%	-25,65%	7.244	1,64%	8.752	2,15%	-17,23%
24	Toyota COROLLA	426	442	644	-3,62%	-33,85%	7.237	1,64%	6.642	1,63%	8,96%
25	Suzuki FUN	504	478	608	5,44%	-17,11%	6.813	1,55%	8.312	2,04%	-18,03%
26	Honda CIVIC	308	239	480	28,87%	-35,83%	5.635	1,28%	3.139	0,77%	79,52%
27	Volkswagen VENTO	230	337	372	-31,75%	-38,17%	5.159	1,17%	4.754	1,17%	8,52%
28	Renault MEGANE II	218	552	397	-60,51%	-45,09%	5.093	1,16%	6.614	1,62%	-23,00%
29	Chevrolet CORSA SW	266	363	361	-26,72%	-26,32%	4.807	1,09%	5.456	1,34%	-11,90%
30	Renault LOGAN	184	206	331	-10,68%	-44,41%	4.600	1,04%	1.679	0,41%	173,97%
31	Citroen C3	271	328	349	-17,38%	-22,35%	4.404	1,00%	7.376	1,81%	-40,29%
32	Fiat IDEA	194	353	280	-45,04%	-30,71%	4.187	0,95%	4.911	1,20%	-14,74%
33	Renault SANDERO	191		252	N/D	-24,21%	4.089	0,93%		0,00%	N/D
34	Fiat PALIO WEEKEND	364	360	559	1,11%	-34,88%	4.029	0,91%	5.645	1,38%	-28,63%
35	Volkswagen GOL COUNTRY	266	245	321	8,57%	-17,13%	3.876	0,88%	5.171	1,27%	-25,04%
36	Volkswagen POLO	171	441	288	-61,22%	-40,63%	3.584	0,81%	5.035	1,24%	-28,82%
37	Chevrolet VECTRA	131	206	243	-36,41%	-46,09%	3.305	0,75%	2.704	0,66%	22,23%
38	Peugeot 207 COMPACT	1.407		1.720	N/D	-18,20%	3.292	0,75%		0,00%	N/D
39	Volkswagen GOL TREND	955		1.395	N/D	-31,54%	3.191	0,72%		0,00%	N/D
40	Nissan TIIDA	141	28	198	403,57%	-28,79%	2.951	0,67%	28	0,01%	10439,29%
41	Peugeot PARTNER	120	256	214	-53,13%	-43,93%	2.691	0,61%	3.502	0,86%	-23,16%
42	Citroen BERLINGO	129	182	194	-29,12%	-33,51%	2.589	0,59%	2.981	0,73%	-13,15%
43	Citroen PICASSO	113	184	173	-38,59%	-34,68%	2.313	0,53%	2.617	0,64%	-11,62%
44	Renault SCENIC	119	164	115	-27,44%	3,48%	2.237	0,51%	2.804	0,69%	-20,22%
45	Chevrolet ZAFIRA	110	149	161	-26,17%	-31,68%	1.963	0,45%	1.724	0,42%	13,86%
46	Volkswagen GOLF	87	76	130	14,47%	-33,08%	1.838	0,42%	1.534	0,38%	19,82%
47	Audi A3	45	73	112	-38,36%	-59,82%	1.619	0,37%	1.265	0,31%	27,98%
48	Mercedes Benz CLASE C	34	46	116	-26,09%	-70,69%	1.596	0,36%	882	0,22%	80,95%
49	Chrysler PT CRUISER	59	71	180	-16,90%	-67,22%	1.411	0,32%	817	0,20%	72,71%
50	BMW 300 SERIES	19	48	95	-60,42%	-80,00%	1.224	0,28%	1.126	0,28%	8,70%
51	Otros	1.291	1.047	1.866	23,30%	-30,81%	17.356	3,94%	13.836	3,39%	25,44%
<b>Total</b>		<b>26.426</b>	<b>29.708</b>	<b>38.318</b>			<b>440.550</b>	<b>1</b>	<b>407.663</b>		

**Autos - Participacion por Segmento**





**Patentamientos por Ranking de Livianos y Pesados - Mercado Total**

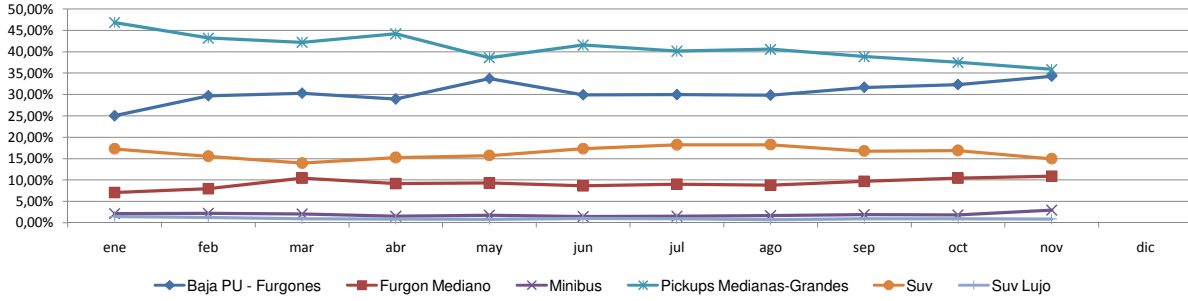
Rank	Comercial Liviano										
	Modelo	nov/08 (a)	nov/07 (b)	oct/08 (c)	Var a-b	Var a-c	Ac. 08	Part %	Ac. 07	Part %	Var 08-07
1	Toyota HILUX	1.026	1.216	1.654	-15,63%	-37,97%	17.949	15,80%	16.361	16,42%	9,71%
2	Ford RANGER	669	1.388	955	-51,80%	-29,95%	14.333	12,61%	13.819	13,87%	3,72%
3	Renault KANGOO FURGON	587	961	796	-38,92%	-26,26%	11.007	9,69%	10.586	10,62%	3,98%
4	Chevrolet S-10	317	704	655	-54,97%	-51,60%	8.601	7,57%	9.225	9,26%	-6,76%
5	Peugeot PARTNER FURGON	440	527	643	-16,51%	-31,57%	6.847	6,03%	6.728	6,75%	1,77%
6	Fiat FIORINO	378	375	553	0,80%	-31,65%	6.064	5,34%	4.521	4,54%	34,13%
7	Honda CRV	192	229	372	-16,16%	-48,39%	4.706	4,14%	2.101	2,11%	123,99%
8	Volkswagen SAVEIRO	241	265	369	-9,06%	-34,69%	3.786	3,33%	4.170	4,19%	-9,21%
9	Mercedes Benz SPRINTER	195	214	358	-8,88%	-45,53%	3.619	3,19%	2.814	2,82%	28,61%
10	Citroen BERLINGO FURGON	236	228	446	3,51%	-47,09%	3.457	3,04%	3.657	3,67%	-5,47%
11	Renault MASTER	204	226	216	-9,73%	-5,56%	2.788	2,45%	2.298	2,31%	21,32%
12	Toyota HILUX SW4	114	141	168	-19,15%	-32,14%	2.288	2,01%	2.145	2,15%	6,67%
13	Ford F 100	61	197	112	-69,04%	-45,54%	2.093	1,84%	2.718	2,73%	-22,99%
14	Nissan FRONTIER	32	100	60	-68,00%	-46,67%	1.800	1,58%	1.945	1,95%	-7,46%
15	Hyundai TUCSON	77	55	95	40,00%	-18,95%	1.528	1,34%	483	0,48%	216,36%
16	Chevrolet CAPTIVA	54	9	96	500,00%	-43,75%	1.310	1,15%	9	0,01%	14455,56%
17	Iveco DAILY	69	73	114	-5,48%	-39,47%	1.307	1,15%	1.265	1,27%	3,32%
18	Mitsubishi L200	40	74	87	-45,95%	-54,02%	1.244	1,09%	777	0,78%	60,10%
19	Hyundai SANTA FE	39	39	118	0,00%	-66,95%	1.191	1,05%	371	0,37%	221,02%
20	Fiat UNO	93	79	109	17,72%	-14,68%	1.085	0,95%	1.029	1,03%	5,44%
21	Otros	945	897	1.513	5,35%	-37,54%	16.618	14,63%	12.619	12,66%	31,69%
<b>Total</b>		<b>6.009</b>	<b>7.997</b>	<b>9.489</b>			<b>113.621</b>	<b>1</b>	<b>99.641</b>		

Rank	Comercial Pesado										
	Modelo	nov/08 (a)	nov/07 (b)	oct/08 (c)	Var a-b	Var a-c	Ac. 08	Part %	Ac. 07	Part %	Var 08-07
1	Ford CARGO 1722 E	82	145	113	-43,45%	-27,43%	1.508	6,95%	705	3,25%	113,90%
2	Iveco 170 E	82	103	119	-20,39%	-31,09%	1.214	5,60%	796	3,67%	52,51%
3	Mercedes Benz LS 1634	48	91	79	-47,25%	-39,24%	1.050	4,84%	1.547	7,13%	-32,13%
4	Ford F-4000	49	64	67	-23,44%	-26,87%	964	4,45%	752	3,47%	28,19%
5	Mercedes Benz L-1624	73	110	114	-33,64%	-35,96%	950	4,38%	1.118	5,15%	-15,03%
6	Mercedes Benz OF 1418	11	56	26	-80,36%	-57,69%	947	4,37%	1.100	5,07%	-13,91%
7	Volkswagen 17220	45	52	69	-13,46%	-34,78%	887	4,09%	1.009	4,65%	-12,09%
8	Iveco 450 E	28	46	61	-39,13%	-54,10%	713	3,29%	838	3,86%	-14,92%
9	Mercedes Benz 1315	52	24	65	116,67%	-20,00%	692	3,19%	532	2,45%	30,08%
10	Mercedes Benz ATEGO 1725	47	47	61	0,00%	-22,95%	673	3,10%	156	0,72%	331,41%
11	Ford CARGO 1832 E	28	80	44	-65,00%	-36,36%	613	2,83%	410	1,89%	49,51%
12	Mercedes Benz 710	25	34	42	-26,47%	-40,48%	560	2,58%	526	2,42%	6,46%
13	Volkswagen 19320	19	29	41	-34,48%	-53,66%	441	2,03%	190	0,88%	132,11%
14	Mercedes Benz L1634	27	40	25	-32,50%	8,00%	431	1,99%	697	3,21%	-38,16%
15	Iveco 490 S	33		40	N/D	-17,50%	430	1,98%		0,00%	N/D
16	Volkswagen 17250 E	18	26	48	-30,77%	-62,50%	427	1,97%	196	0,90%	117,86%
17	Mercedes Benz OF 1722	21	27	100	-22,22%	-79,00%	406	1,87%	270	1,24%	50,37%
18	Mercedes Benz AXOR 1933	19	16	29	18,75%	-34,48%	400	1,84%	99	0,46%	304,04%
19	Renault PREMIUM	27	47	45	-42,55%	-40,00%	381	1,76%	369	1,70%	3,25%
20	Scania G340	31		57	N/D	-45,61%	376	1,73%		0,00%	N/D
21	Otros	463	694	809	-33,29%	-42,77%	7.622	35,15%	10.391	47,88%	-26,65%
<b>Total</b>		<b>1.228</b>	<b>1.731</b>	<b>2.054</b>			<b>21.685</b>	<b>1</b>	<b>21.701</b>		

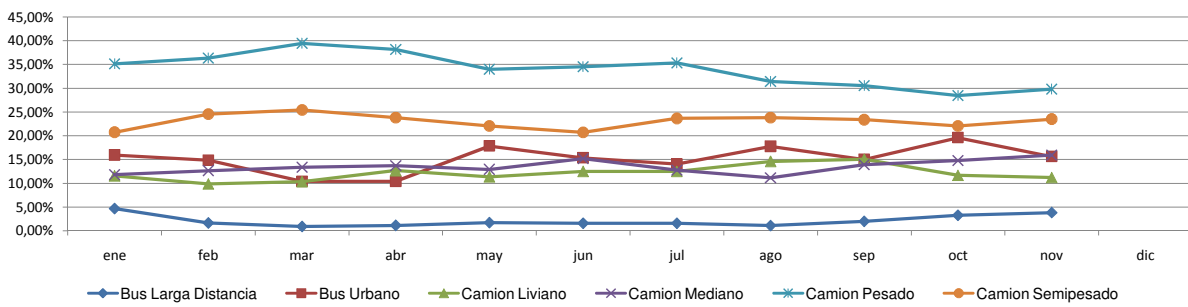


**Patentamientos por Ranking de Livianos y Pesados - Mercado Total**

**Comercial Liviano**



**Comercial Pesado**





**Patentamientos por Provincias y Tipos -**

Distrito	Automovil+Comercial Liviano							Comercial Pesado+Otros Pesados							Mercado Total					
	nov/08 (a)	nov/07 (b)	oct/08 (c)	Var a-b	Var a-c	Ac. 08	Ac. 07	Var 08-07	nov/08 (a)	nov/07 (b)	oct/08 (c)	Var a-b	Var a-c	Ac. 08	Ac. 07	Var 08-07	Ac. 08	Ac. 07	Var 08-07	Part %
CAPITAL FEDERAL	6.511	8.891	8.940	-26,77%	-27,17%	101.874	101.173	0,69%	545	812	847	-32,88%	-35,66%	8.288	9.266	-10,55%	110.162	110.439	-0,25%	18,67%
GRAN BUENOS AIRES	5.599	6.311	8.040	-11,28%	-30,36%	89.325	81.617	9,44%	170	192	300	-11,46%	-43,33%	3.249	3.423	-5,08%	92.575	85.040	8,86%	15,69%
BUENOS AIRES	5.131	5.951	7.288	-13,78%	-29,60%	85.724	79.180	8,26%	309	399	436	-22,56%	-29,13%	4.787	4.561	4,96%	90.511	83.744	8,08%	15,34%
CORDOBA	3.168	3.287	5.092	-3,62%	-37,78%	58.650	50.354	16,48%	192	312	298	-38,46%	-35,57%	3.517	3.148	11,72%	62.167	53.502	16,20%	10,54%
SANTA FE	2.537	3.301	4.210	-23,14%	-39,74%	50.168	46.654	7,53%	219	297	343	-26,26%	-36,15%	3.638	3.370	7,95%	53.806	50.026	7,56%	9,12%
MENDOZA	1.020	1.175	1.713	-13,19%	-40,46%	20.098	17.839	12,66%	72	119	120	-39,50%	-40,00%	1.480	1.625	-8,92%	21.578	19.464	10,86%	3,66%
ENTRE RIOS	665	746	1.143	-10,86%	-41,82%	13.387	11.904	12,46%	67	81	103	-17,28%	-34,95%	1.151	1.058	8,79%	14.538	12.962	12,16%	2,46%
CHUBUT	844	891	1.173	-5,27%	-28,05%	13.396	11.892	12,65%	70	86	66	-18,60%	6,06%	1.054	1.020	3,33%	14.450	12.912	11,91%	2,45%
NEUQUEN	848	848	1.123	0,00%	-24,49%	13.270	11.091	19,65%	39	62	78	-37,10%	-50,00%	812	833	-2,52%	14.082	11.924	18,10%	2,39%
TUCUMAN	634	596	947	6,38%	-33,05%	11.062	9.686	14,21%	27	41	73	-34,15%	-63,01%	773	702	10,11%	11.835	10.388	13,93%	2,01%
SALTA	499	641	909	-22,15%	-45,10%	10.643	9.755	9,10%	60	94	80	-36,17%	-25,00%	1.001	1.010	-0,89%	11.644	10.765	8,17%	1,97%
CHACO	725	435	984	66,67%	-26,32%	10.466	7.341	42,57%	39	66	89	-40,91%	-56,18%	907	796	13,94%	11.373	8.137	39,77%	1,93%
CORRIENTES	547	488	694	12,09%	-21,18%	9.506	8.120	17,07%	48	67	98	-28,36%	-51,02%	1.236	1.025	20,59%	10.742	9.145	17,46%	1,82%
SANTA CRUZ	630	644	808	-2,17%	-22,03%	9.164	7.589	20,75%	35	48	34	-27,08%	2,94%	482	624	-22,76%	9.646	8.213	17,45%	1,64%
RIO NEGRO	537	618	745	-13,11%	-27,92%	8.348	8.210	1,68%	16	32	11	-50,00%	45,45%	241	294	-18,03%	8.589	8.504	1,00%	1,46%
LA PAMPA	323	379	568	-14,78%	-43,13%	6.563	5.662	15,91%	10	33	39	-69,70%	-74,36%	319	313	1,92%	6.882	5.975	15,18%	1,17%
MISIONES	259	349	439	-25,79%	-41,00%	6.490	6.881	-5,68%	13	29	27	-55,17%	-51,85%	390	392	-0,51%	6.880	7.273	-5,40%	1,17%
TIERRA DEL FUEGO	503	601	725	-16,31%	-30,62%	6.479	6.433	0,72%	28	12	29	133,33%	-3,45%	349	343	1,75%	6.828	6.776	0,77%	1,16%
JUJUY	257	246	361	4,47%	-28,81%	5.420	4.800	12,92%	45	66	49	-31,82%	-8,16%	775	903	-14,17%	6.195	5.703	8,63%	1,05%
SAN JUAN	284	301	437	-5,65%	-35,01%	5.354	4.593	16,57%	28	28	37	0,00%	-24,32%	413	360	14,72%	5.767	4.953	16,43%	0,98%
SANTIAGO DEL ESTERO	227	193	343	17,62%	-33,82%	4.725	4.245	11,31%	26	24	37	8,33%	-29,73%	321	292	9,93%	5.046	4.537	11,22%	0,86%
SAN LUIS	216	294	350	-26,53%	-38,29%	4.006	3.577	11,99%	11	10	11	10,00%	0,00%	130	166	-21,69%	4.136	3.743	10,50%	0,70%
FORMOSA	146	143	280	2,10%	-47,86%	3.766	3.112	21,02%	31	11	12	181,82%	158,33%	199	233	-14,59%	3.965	3.345	18,54%	0,67%
CATAMARCA	202	247	296	-18,22%	-31,76%	3.819	3.265	16,97%	6	8	11	-25,00%	-45,45%	124	97	27,84%	3.943	3.362	17,28%	0,67%
LA RIOJA	123	129	199	-4,65%	-38,19%	2.468	2.331	5,88%	3	6	1	-50,00%	200,00%	99	66	50,00%	2.567	2.397	7,09%	0,44%



Patentamientos por Provincias y Tipos -

