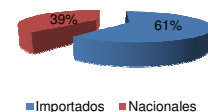




**Patentamientos por Marcas - Mercado Total**

	sep/10(a)	ago/10(b)	sep/09(c)	sep/08(d)	Var a-b	Var a-c	Var a-d	Ac. 10	Ac. 09	Var 10-09
<b>Automovil</b>	49.379	43.866	36.362	41.522	12,57%	35,80%	18,92%	399.499	323.572	23,47%
<b>Comercial Liviano</b>	11.723	11.031	7.786	11.205	6,27%	50,57%	4,62%	95.952	73.681	30,23%
<b>Comercial Pesado</b>	1.750	1.724	1.225	2.191	1,51%	42,86%	-20,13%	13.110	10.630	23,33%
<b>Otros Pesados</b>	875	782	648	1.279	11,89%	35,03%	-31,59%	7.230	6.292	14,91%
<b>Total</b>	<b>63.727</b>	<b>57.403</b>	<b>46.021</b>	<b>56.197</b>	<b>11,02%</b>	<b>38,47%</b>	<b>13,40%</b>	<b>515.791</b>	<b>414.175</b>	<b>24,53%</b>
<b>Prom. diario</b>	2.897	2.733	2.092	2.554				2.773	2.263	
<b>Dias habiles</b>	22	21	22	22				186	183	

Patentamientos por origen		
	10-Sep	Ac. 10
Importados	39.193	314.212
Nacionales	24.534	201.579



**Patentamientos Mensuales**

	ene	feb	mar	abr	may	jun	jul	ago	sep	oct	nov	dic
2010	78.466	44.760	57.287	50.947	50.820	54.810	57.571	57.403	63.727			
2009	73.927	39.075	41.301	40.534	40.147	44.103	46.633	42.434	46.021	39.963	37.493	23.282
<b>Var% 10-09</b>	<b>6,14%</b>	<b>14,55%</b>	<b>38,71%</b>	<b>25,69%</b>	<b>26,58%</b>	<b>24,28%</b>	<b>23,46%</b>	<b>35,28%</b>	<b>38,47%</b>	<b>-100,00%</b>	<b>-100,00%</b>	<b>-100,00%</b>
2008	85.811	46.476	44.277	56.149	56.809	49.082	58.414	51.110	56.197	51.035	35.528	19.891
2007	82.552	38.841	47.379	41.626	47.231	42.139	50.181	54.285	48.857	49.497	40.640	24.527

**Patentamientos por Marcas - Totales**

Marca	2010		2009		2008		2007		2010	2010	2009	2009	2010-2009
	sep/10(a)	Part %	sep/09(c)	Part %	ago/10(e)	Part %	Var a-c	Var a-e					
Volkswagen	11.652	18,54%	9.586	21,13%	9.689	17,11%	21,55%	20,26%	96.878	19,05%	78.500	19,25%	23,41%
Chevrolet	9.721	15,47%	6.230	13,73%	8.725	15,41%	56,04%	11,42%	78.811	15,50%	58.129	14,25%	35,58%
Ford	7.195	11,45%	6.501	14,33%	6.786	11,99%	10,68%	6,03%	63.339	12,46%	54.918	13,46%	15,33%
Renault	8.642	13,75%	5.937	13,08%	7.741	13,67%	45,56%	11,64%	63.202	12,43%	50.287	12,33%	25,68%
Fiat	6.423	10,22%	4.349	9,58%	5.431	9,59%	47,69%	18,27%	52.802	10,38%	40.098	9,83%	31,68%
Peugeot	5.432	8,64%	3.733	8,23%	5.642	9,97%	45,51%	-3,72%	43.672	8,59%	37.649	9,23%	16,00%
Toyota	2.767	4,40%	2.241	4,94%	2.484	4,39%	23,47%	11,39%	25.434	5,00%	24.228	5,94%	4,98%
Citroen	2.337	3,72%	1.735	3,82%	2.402	4,24%	34,70%	-2,71%	18.653	3,67%	16.736	4,10%	11,45%
Honda	2.278	3,62%	1.266	2,79%	1.998	3,53%	79,94%	14,01%	16.536	3,25%	12.512	3,07%	32,16%
Mercedes Benz	1.167	1,86%	814	1,79%	1.121	1,98%	43,37%	4,10%	9.768	1,92%	8.488	2,08%	15,08%
Nissan	1.166	1,86%	321	0,71%	962	1,70%	263,24%	21,21%	7.444	1,46%	3.205	0,79%	132,26%
Suzuki	613	0,98%	568	1,25%	515	0,91%	7,92%	19,03%	5.850	1,15%	5.348	1,31%	9,39%
Hyundai	641	1,02%	360	0,79%	491	0,87%	78,06%	30,55%	4.183	0,82%	2.821	0,69%	48,28%
Audi	330	0,53%	219	0,48%	372	0,66%	50,68%	-11,29%	3.371	0,66%	2.304	0,56%	46,31%
BMW	310	0,49%	239	0,53%	246	0,43%	29,71%	26,02%	2.861	0,56%	1.835	0,45%	55,91%
Iveco	484	0,77%	299	0,66%	452	0,80%	61,87%	7,08%	2.820	0,55%	1.772	0,43%	59,14%
Dodge	189	0,30%	121	0,27%	252	0,45%	56,20%	-25,00%	2.293	0,45%	1.057	0,26%	116,93%
Kia	254	0,40%	181	0,40%	289	0,51%	40,33%	-12,11%	2.238	0,44%	1.707	0,42%	31,11%
Chery	293	0,47%	143	0,32%	195	0,34%	104,90%	50,26%	1.672	0,33%	1.026	0,25%	62,96%
Scania	178	0,28%	67	0,15%	124	0,22%	165,67%	43,55%	1.060	0,21%	766	0,19%	38,38%
Mitsubishi	93	0,15%	62	0,14%	116	0,20%	50,00%	-19,83%	922	0,18%	558	0,14%	65,23%
Jeep	80	0,13%	41	0,09%	68	0,12%	95,12%	17,65%	780	0,15%	746	0,18%	4,56%
Chrysler	165	0,26%	90	0,20%	122	0,22%	83,33%	35,25%	751	0,15%	822	0,20%	-8,64%
Agrale	92	0,15%	56	0,12%	109	0,19%	64,29%	-15,60%	682	0,13%	487	0,12%	40,04%
Subaru	80	0,13%	21	0,05%	61	0,11%	280,95%	31,15%	517	0,10%	273	0,07%	89,38%
Seat	80	0,13%	66	0,15%	77	0,14%	21,21%	3,90%	489	0,10%	472	0,12%	3,60%
Volvo	45	0,07%	42	0,09%	61	0,11%	7,14%	-26,23%	484	0,10%	452	0,11%	7,08%
Mini	42	0,07%	35	0,08%	25	0,04%	20,00%	68,00%	401	0,08%	299	0,07%	34,11%
Puma de Tat	36	0,06%	3	0,01%	11	0,02%	1100,00%	227,27%	234	0,05%	147	0,04%	59,18%
Alfa Romeo	38	0,06%	17	0,04%	19	0,03%	123,53%	100,00%	201	0,04%	23	0,01%	773,91%
Porsche	4	0,01%	13	0,03%	17	0,03%	-69,23%	-76,47%	83	0,02%	70	0,02%	18,57%
Land Rover	10	0,02%	16	0,04%	8	0,01%	-37,50%	25,00%	65	0,01%	89	0,02%	-26,97%
Materfer	5	0,01%	1	0,00%	4	0,01%	400,00%	25,00%	10	0,00%	34	0,01%	-70,59%
Jaguar		0,00%		0,00%		0,00%	N/D	N/D	8	0,00%	4	0,00%	100,00%
Mack	1	0,00%		0,00%	1	0,00%	N/D	0,00%	7	0,00%	9	0,00%	-22,22%
Ferrari		0,00%		0,00%	1	0,00%	N/D	-100,00%	5	0,00%	4	0,00%	25,00%
Maserati		0,00%		0,00%		0,00%	N/D	N/D	1	0,00%		0,00%	N/D
Lexus		0,00%		0,00%		0,00%	N/D	N/D		0,00%	1	0,00%	-100,00%
<b>Total</b>	<b>62.843</b>		<b>45.373</b>		<b>56.617</b>				<b>508.527</b>		<b>407.876</b>		

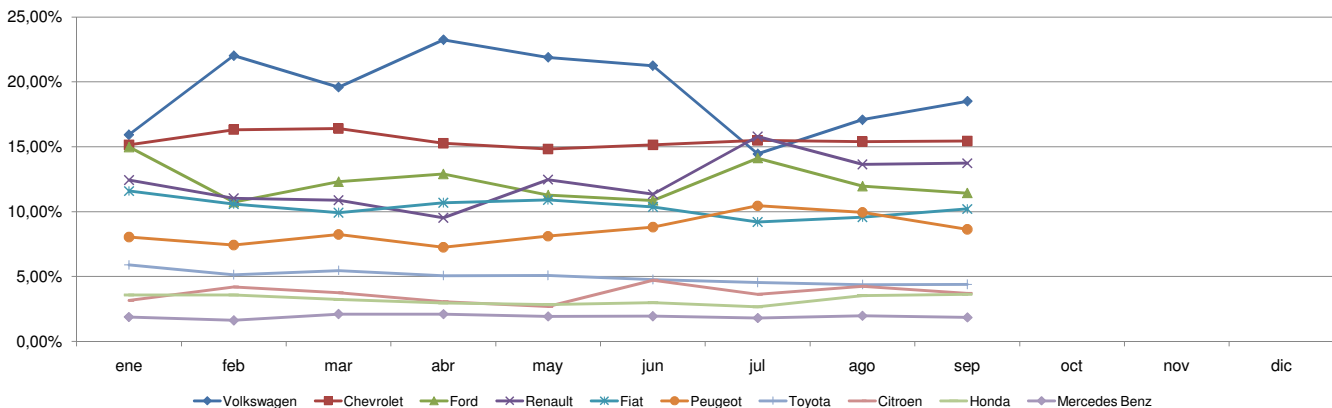


**Patentamientos por Marcas - Mercado Total**

Patentamientos por Marcas - Autos + Livianos								2010	2010	2009	2009	Var	
Marca	sep/10(a)	Part %	sep/09(c)	Part %	ago/10(e)	Part %	Var a-c	Var a-e	ene - sep	Part %	ene - sep	Part %	2010-2009
Volkswagen	11.492	18,81%	9.484	21,48%	9.558	17,41%	21,17%	20,23%	95.672	19,31%	77.566	19,53%	23,34%
Chevrolet	9.721	15,91%	6.230	14,11%	8.725	15,89%	56,04%	11,42%	78.811	15,91%	58.129	14,63%	35,58%
Renault	8.622	14,11%	5.897	13,36%	7.718	14,06%	46,21%	11,71%	62.952	12,71%	50.055	12,60%	25,77%
Ford	6.896	11,29%	6.254	14,17%	6.490	11,82%	10,27%	6,26%	60.932	12,30%	52.985	13,34%	15,00%
Fiat	6.423	10,51%	4.349	9,85%	5.431	9,89%	47,69%	18,27%	52.802	10,66%	40.098	10,09%	31,68%
Peugeot	5.432	8,89%	3.733	8,46%	5.642	10,28%	45,51%	-3,72%	43.672	8,81%	37.649	9,48%	16,00%
Toyota	2.767	4,53%	2.241	5,08%	2.484	4,52%	23,47%	11,39%	25.434	5,13%	24.228	6,10%	4,98%
Citroen	2.337	3,82%	1.735	3,93%	2.402	4,38%	34,70%	-2,71%	18.653	3,76%	16.736	4,21%	11,45%
Honda	2.278	3,73%	1.266	2,87%	1.998	3,64%	79,94%	14,01%	16.536	3,34%	12.512	3,15%	32,16%
Nissan	1.166	1,91%	321	0,73%	962	1,75%	263,24%	21,21%	7.444	1,50%	3.205	0,81%	132,26%
Suzuki	613	1,00%	568	1,29%	515	0,94%	7,92%	19,03%	5.850	1,18%	5.348	1,35%	9,39%
Mercedes Benz	617	1,01%	353	0,80%	539	0,98%	74,79%	14,47%	5.098	1,03%	3.943	0,99%	29,29%
Hyundai	612	1,00%	343	0,78%	462	0,84%	78,43%	32,47%	3.966	0,80%	2.690	0,68%	47,43%
Audi	330	0,54%	219	0,50%	372	0,68%	50,68%	-11,29%	3.371	0,68%	2.304	0,58%	46,31%
BMW	310	0,51%	239	0,54%	246	0,45%	29,71%	26,02%	2.861	0,58%	1.835	0,46%	55,91%
Dodge	189	0,31%	121	0,27%	252	0,46%	56,20%	-25,00%	2.293	0,46%	1.057	0,27%	116,93%
Kia	254	0,42%	181	0,41%	289	0,53%	40,33%	-12,11%	2.238	0,45%	1.707	0,43%	31,11%
Chery	293	0,48%	143	0,32%	195	0,36%	104,90%	50,26%	1.672	0,34%	1.026	0,26%	62,96%
Mitsubishi	93	0,15%	62	0,14%	116	0,21%	50,00%	-19,83%	922	0,19%	558	0,14%	65,23%
Jeep	80	0,13%	41	0,09%	68	0,12%	95,12%	17,65%	780	0,16%	746	0,19%	4,56%
Iveco	135	0,22%	88	0,20%	85	0,15%	53,41%	58,82%	758	0,15%	632	0,16%	19,94%
Chrysler	165	0,27%	90	0,20%	122	0,22%	83,33%	35,25%	751	0,15%	822	0,21%	-8,64%
Subaru	80	0,13%	21	0,05%	61	0,11%	280,95%	31,15%	517	0,10%	273	0,07%	89,38%
Seat	80	0,13%	66	0,15%	77	0,14%	21,21%	3,90%	489	0,10%	472	0,12%	3,60%
Mini	42	0,07%	35	0,08%	25	0,05%	20,00%	68,00%	401	0,08%	299	0,08%	34,11%
Volvo	20	0,03%	21	0,05%	17	0,03%	-4,76%	17,65%	204	0,04%	183	0,05%	11,48%
Alfa Romeo	38	0,06%	17	0,04%	19	0,03%	123,53%	100,00%	201	0,04%	23	0,01%	773,91%
Porsche	4	0,01%	13	0,03%	17	0,03%	-69,23%	-76,47%	83	0,02%	70	0,02%	18,57%
Land Rover	10	0,02%	16	0,04%	8	0,01%	-37,50%	25,00%	65	0,01%	89	0,02%	-26,97%
Jaguar		0,00%		0,00%		0,00%	N/D	N/D	8	0,00%	4	0,00%	100,00%
Ferrari		0,00%		0,00%	1	0,00%	N/D	-100,00%	5	0,00%	4	0,00%	25,00%
Maserati		0,00%		0,00%		0,00%	N/D	N/D	1	0,00%		0,00%	N/D
Agrale		0,00%	1	0,00%		0,00%	-100,00%	N/D		0,00%	2	0,00%	-100,00%
Lexus		0,00%		0,00%		0,00%	N/D	N/D		0,00%	1	0,00%	-100,00%
<b>Total</b>	<b>61.099</b>		<b>44.148</b>		<b>54.896</b>				<b>495.442</b>		<b>397.251</b>		

Patentamientos por Marcas - Camiones + Buses								2010	2010	2009	2009	Var	
Marca	sep/10(a)	Part %	sep/09(c)	Part %	ago/10(e)	Part %	Var a-c	Var a-e	ene - sep	Part %	ene - sep	Part %	2010-2009
Mercedes Benz	550	29,97%	461	36,21%	582	32,33%	19,31%	-5,50%	4.670	33,84%	4.545	40,51%	2,75%
Ford	299	16,29%	247	19,40%	296	16,44%	21,05%	1,01%	2.407	17,44%	1.933	17,23%	24,52%
Iveco	349	19,02%	211	16,58%	367	20,39%	65,40%	-4,90%	2.062	14,94%	1.140	10,16%	80,88%
Volkswagen	160	8,72%	102	8,01%	131	7,28%	56,86%	22,14%	1.206	8,74%	934	8,32%	29,12%
Scania	178	9,70%	67	5,26%	124	6,89%	165,67%	43,55%	1.060	7,68%	766	6,83%	38,38%
Agrale	92	5,01%	55	4,32%	109	6,06%	67,27%	-15,60%	682	4,94%	485	4,32%	40,62%
Randon	57	3,11%	31	2,44%	62	3,44%	83,87%	-8,06%	503	3,64%	405	3,61%	24,20%
Volvo	25	1,36%	21	1,65%	44	2,44%	19,05%	-43,18%	280	2,03%	269	2,40%	4,09%
Renault	20	1,09%	40	3,14%	23	1,28%	-50,00%	-13,04%	250	1,81%	232	2,07%	7,76%
Puma de Tat	36	1,96%	3	0,24%	11	0,61%	1100,00%	227,27%	234	1,70%	147	1,31%	59,18%
Hyundai	29	1,58%	17	1,34%	29	1,61%	70,59%	0,00%	217	1,57%	131	1,17%	65,65%
MONTENEGRO	26	1,42%	14	1,10%	14	0,78%	85,71%	85,71%	168	1,22%	161	1,43%	4,35%
Montesur	8	0,44%	3	0,24%	3	0,17%	166,67%	166,67%	46	0,33%	29	0,26%	58,62%
Materfer	5	0,27%	1	0,08%	4	0,22%	400,00%	25,00%	10	0,07%	34	0,30%	-70,59%
Mack	1	0,05%		0,00%	1	0,06%	N/D	0,00%	7	0,05%	9	0,08%	-22,22%
<b>Total</b>	<b>1.835</b>		<b>1.273</b>		<b>1.800</b>				<b>13.802</b>		<b>11.220</b>		

**Participacion por Marcas - Evolucion Mensual**

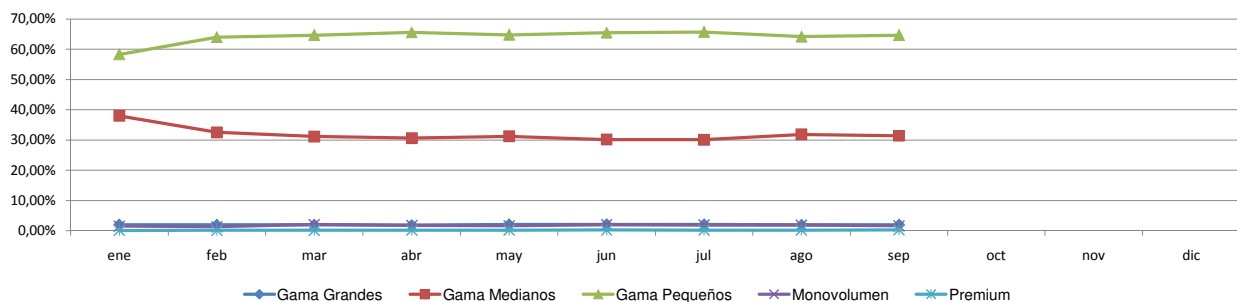




**Patentamientos por Ranking de Automoviles - Mercado Total**

Rank.	Ranking Por Modelos - Automoviles										
	Modelo	sep/10 (a)	sep/09 (b)	ago/10 (c)	Var a-b	Var a-c	Ac. 10	Part %	Ac. 09	Part %	Var 10-09
1	Chevrolet CORSA	3.706	2.590	2.842	43,09%	30,40%	27.730	6,94%	22.973	7,10%	20,71%
2	Peugeot 207 COMPACT	2.728	2.159	3.121	26,35%	-12,59%	23.990	6,01%	19.719	6,09%	21,66%
3	Volkswagen GOL TREND	1.857	1.547	1.491	20,04%	24,55%	19.866	4,97%	17.054	5,27%	16,49%
4	Renault SANDERO	2.561	1.570	2.191	63,12%	16,89%	17.803	4,46%	8.260	2,55%	115,53%
5	Volkswagen SURAN	1.457	1.503	1.429	-3,06%	1,96%	16.998	4,25%	12.311	3,80%	38,07%
6	Ford ECOSPORT	2.124	1.510	1.658	40,66%	28,11%	16.375	4,10%	14.330	4,43%	14,27%
7	Volkswagen GOL	1.363	2.177	1.450	-37,39%	-6,00%	15.518	3,88%	14.488	4,48%	7,11%
8	Ford KA	1.323	1.281	1.026	3,28%	28,95%	11.179	2,80%	9.164	2,83%	21,99%
9	Renault CLIO	2.031	947	1.846	114,47%	10,02%	11.174	2,80%	11.662	3,60%	-4,18%
10	Fiat SIENA	1.269	976	1.371	30,02%	-7,44%	10.709	2,68%	8.825	2,73%	21,35%
11	Chevrolet AGILE	1.418	45	1.148	3051,11%	23,52%	9.948	2,49%	45	0,01%	22006,67%
12	Chevrolet AVEO	1.336	478	1.189	179,50%	12,36%	9.600	2,40%	4.330	1,34%	121,71%
13	Volkswagen BORA	1.358	1.101	1.221	23,34%	11,22%	9.587	2,40%	8.586	2,65%	11,66%
14	Volkswagen VOYAGE	1.006	806	803	24,81%	25,28%	9.134	2,29%	7.015	2,17%	30,21%
15	Ford FIESTA	765	962	1.107	-20,48%	-30,89%	9.062	2,27%	9.252	2,86%	-2,05%
16	Ford FOCUS II	991	453	970	118,76%	2,16%	8.454	2,12%	4.551	1,41%	85,76%
17	Fiat PALIO	1.290	700	780	84,29%	65,38%	8.017	2,01%	7.448	2,30%	7,64%
18	Fiat PUNTO	703	471	710	49,26%	-0,99%	7.613	1,91%	3.701	1,14%	105,70%
19	Fiat UNO	983	698	787	40,83%	24,90%	7.552	1,89%	6.640	2,05%	13,73%
20	Honda FIT	1.083	729	883	48,56%	22,65%	7.279	1,82%	6.887	2,13%	5,69%
21	Toyota COROLLA	807	552	692	46,20%	16,62%	7.123	1,78%	6.102	1,89%	16,73%
22	Citroen C4	1.004	656	931	53,05%	7,84%	6.923	1,73%	6.989	2,16%	-0,94%
23	Peugeot 307	791	586	635	34,98%	24,57%	6.433	1,61%	6.938	2,14%	-7,28%
24	Renault SYMBOL	631	526	693	19,96%	-8,95%	6.232	1,56%	4.098	1,27%	52,07%
25	Volkswagen FOX	1.294	1.110	894	16,58%	44,74%	6.090	1,52%	4.628	1,43%	31,59%
26	Renault LOGAN	777	730	613	6,44%	26,75%	6.039	1,51%	3.856	1,19%	56,61%
27	Chevrolet MERIVA	475	610	596	-22,13%	-20,30%	5.587	1,40%	5.016	1,55%	11,38%
28	Fiat PALIO WEEKEND	657	462	400	42,21%	64,25%	5.172	1,29%	4.195	1,30%	23,29%
29	Suzuki FUN	532	467	428	13,92%	24,30%	5.078	1,27%	3.304	1,02%	53,69%
30	Nissan TIIDA	814	279	567	191,76%	43,56%	5.057	1,27%	2.410	0,74%	109,83%
31	Renault KANGOO	643	495	540	29,90%	19,07%	4.909	1,23%	4.277	1,32%	14,78%
32	Chevrolet ASTRA	600	755	583	-20,53%	2,92%	4.730	1,18%	6.015	1,86%	-21,36%
33	Chevrolet CORSA II	522	439	486	18,91%	7,41%	4.672	1,17%	4.981	1,54%	-6,20%
34	Volkswagen VENTO	657	484	565	35,74%	16,28%	4.506	1,13%	3.742	1,16%	20,42%
35	Citroen C3	448	468	480	-4,27%	-6,67%	4.431	1,11%	3.618	1,12%	22,47%
36	Honda CITY	605		345	N/D	75,36%	4.393	1,10%		0,00%	N/D
37	Peugeot 206	532	192	551	177,08%	-3,45%	4.195	1,05%	3.115	0,96%	34,67%
38	Renault MEGANE II	327	370	343	-11,62%	-4,66%	4.139	1,04%	4.128	1,28%	0,27%
39	Chevrolet CORSA SW	264	322	387	-18,01%	-31,78%	2.858	0,72%	3.448	1,07%	-17,11%
40	Chevrolet VECTRA	273	244	252	11,89%	8,33%	2.809	0,70%	2.134	0,66%	31,63%
41	Citroen PICASSO	301	208	310	44,71%	-2,90%	2.617	0,66%	1.769	0,55%	47,94%
42	Ford FOCUS	166	745	205	-77,72%	-19,02%	2.440	0,61%	5.687	1,76%	-57,10%
43	Peugeot PARTNER	386	145	343	166,21%	12,54%	2.034	0,51%	1.153	0,36%	76,41%
44	Fiat IDEA	136	137	187	-0,73%	-27,27%	1.922	0,48%	1.694	0,52%	13,46%
45	Volkswagen FOX CROSSFOX	432	155	338	178,71%	27,81%	1.870	0,47%	1.843	0,57%	1,47%
46	Honda CIVIC	187	242	223	-22,73%	-16,14%	1.771	0,44%	2.549	0,79%	-30,52%
47	Dodge JOURNEY	151	93	209	62,37%	-27,75%	1.767	0,44%	642	0,20%	175,23%
48	Fiat LINEA	166	154	171	7,79%	-2,92%	1.728	0,43%	1.130	0,35%	52,92%
49	Citroen BERLINGO	298	83	339	259,04%	-12,09%	1.704	0,43%	1.322	0,41%	28,90%
50	Chevrolet ZAFIRA	200	84	169	138,10%	18,34%	1.643	0,41%	1.028	0,32%	59,82%
51	Otros	2.949	1.866	2.367	58,04%	24,59%	21.032	5,26%	24.518	7,58%	-14,22%
<b>Total</b>		<b>49.377</b>	<b>36.362</b>	<b>43.865</b>			<b>399.492</b>	<b>1</b>	<b>323.570</b>		

**Autos - Participacion por Segmento**





**Patentamientos por Ranking de Livianos y Pesados - Mercado Total**

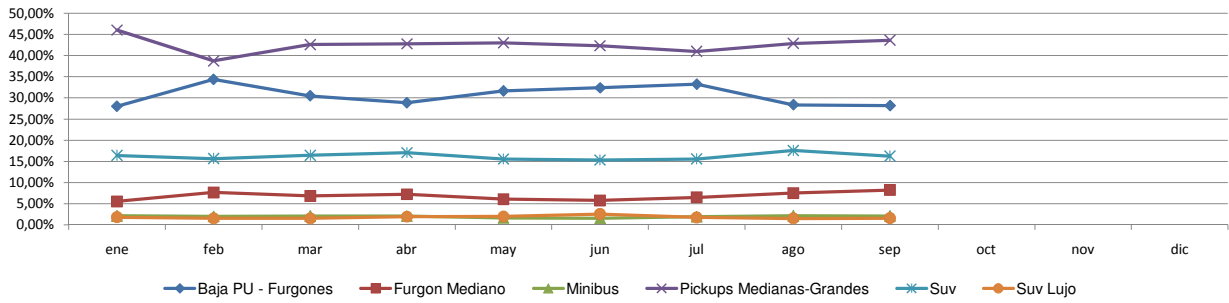
Rank.	Comercial Liviano										
	Modelo	sep/10 (a)	sep/09 (b)	ago/10 (c)	Var a-b	Var a-c	Ac. 10	Part %	Ac. 09	Part %	Var 10-09
1	Toyota HILUX	1.566	1.443	1.387	8,52%	12,91%	14.965	15,60%	15.151	20,56%	-1,23%
2	Ford RANGER	1.099	1.110	1.109	-0,99%	-0,90%	10.210	10,64%	7.800	10,59%	30,90%
3	Renault KANGOO FURGON	917	775	975	18,32%	-5,95%	7.803	8,13%	6.786	9,21%	14,99%
4	Chevrolet S-10	626	456	885	37,28%	-29,27%	6.896	7,19%	4.690	6,37%	47,04%
5	Fiat FIORINO	722	502	586	43,82%	23,21%	6.191	6,45%	4.056	5,50%	52,64%
6	Peugeot PARTNER FURGON	701	485	652	44,54%	7,52%	5.018	5,23%	4.247	5,76%	18,15%
7	Volkswagen AMAROK	1.265		729	N/D	73,53%	4.421	4,61%		0,00%	N/D
8	Volkswagen SAVEIRO	187	198	250	-5,56%	-25,20%	3.547	3,70%	2.608	3,54%	36,00%
9	Honda CRV	367	235	522	56,17%	-29,69%	2.778	2,90%	2.480	3,37%	12,02%
10	Renault MASTER	503	264	301	90,53%	67,11%	2.603	2,71%	2.081	2,82%	25,08%
11	Mercedes Benz SPRINTER	251	188	272	33,51%	-7,72%	2.446	2,55%	2.095	2,84%	16,75%
12	Citroen BERLINGO FURGON	194	200	255	-3,00%	-23,92%	2.410	2,51%	2.417	3,28%	-0,29%
13	Fiat STRADA	314	144	263	118,06%	19,39%	2.376	2,48%	954	1,29%	149,06%
14	Toyota HILUX SW4	188	162	177	16,05%	6,21%	1.695	1,77%	1.649	2,24%	2,79%
15	Nissan FRONTIER	265	4	290	6525,00%	-8,62%	1.689	1,76%	215	0,29%	685,58%
16	Ford F 100	175	113	177	54,87%	-1,13%	1.556	1,62%	1.306	1,77%	19,14%
17	Chery TIGGO	194	143	159	35,66%	22,01%	1.499	1,56%	1.026	1,39%	46,10%
18	Toyota RAV 4	142	59	156	140,68%	-8,97%	1.272	1,33%	920	1,25%	38,26%
19	Hyundai TUCSON	37	91	16	-59,34%	131,25%	857	0,89%	771	1,05%	11,15%
20	Renault KOLEOS	116	77	128	50,65%	-9,38%	789	0,82%	393	0,53%	100,76%
21	Otros	1.893	1.137	1.742	66,49%	8,67%	14.929	15,56%	12.036	16,34%	24,04%
<b>Total</b>		<b>11.722</b>	<b>7.786</b>	<b>11.031</b>			<b>95.950</b>	<b>1</b>	<b>73.681</b>		

Rank.	Comercial Pesado										
	Modelo	sep/10 (a)	sep/09 (b)	ago/10 (c)	Var a-b	Var a-c	Ac. 10	Part %	Ac. 09	Part %	Var 10-09
1	Iveco 170 E	256	108	259	137,04%	-1,16%	1.276	9,75%	563	5,30%	126,64%
2	Mercedes Benz 1418	72	45	117	60,00%	-38,46%	968	7,40%	642	6,04%	50,78%
3	Ford CARGO 1722 E	102	85	108	20,00%	-5,56%	868	6,63%	632	5,95%	37,34%
4	Ford F-4000	77	49	73	57,14%	5,48%	574	4,39%	479	4,51%	19,83%
5	Mercedes Benz 1618L	77		87	N/D	-11,49%	545	4,17%		0,00%	N/D
6	Mercedes Benz L-1624	21	41	25	-48,78%	-16,00%	393	3,00%	631	5,94%	-37,72%
7	Volkswagen 17220	54	27	46	100,00%	17,39%	355	2,71%	297	2,80%	19,53%
8	Mercedes Benz 710	33	30	31	10,00%	6,45%	341	2,61%	273	2,57%	24,91%
9	Mercedes Benz ATEGO 1725	63	41	43	53,66%	46,51%	327	2,50%	344	3,24%	-4,94%
10	Iveco 450 E	41	59	48	-30,51%	-14,58%	323	2,47%	189	1,78%	70,90%
11	Scania G340	43	24	33	79,17%	30,30%	288	2,20%	258	2,43%	11,63%
12	Mercedes Benz LS 1634	37	17	35	117,65%	5,71%	272	2,08%	274	2,58%	-0,73%
13	Agrale MT12	47	18	45	161,11%	4,44%	243	1,86%	253	2,38%	-3,95%
14	Volkswagen 13180	43	21	30	104,76%	43,33%	234	1,79%	158	1,49%	48,10%
15	Volkswagen 19320	22	12	24	83,33%	-8,33%	219	1,67%	108	1,02%	102,78%
16	Mercedes Benz OF 1722	36	36	12	0,00%	200,00%	211	1,61%	266	2,50%	-20,68%
17	Ford CARGO 712	18	30	25	-40,00%	-28,00%	210	1,61%	164	1,54%	28,05%
18	Ford CARGO 1517 E	29	12	24	141,67%	20,83%	196	1,50%	165	1,55%	18,79%
19	Ford CARGO 915 E	29	22	26	31,82%	11,54%	194	1,48%	137	1,29%	41,61%
20	Agrale MT15	22	9	33	144,44%	-33,33%	192	1,47%	20	0,19%	860,00%
21	Otros	621	539	597	15,21%	4,02%	4.855	37,11%	4.772	44,91%	1,74%
<b>Total</b>		<b>1.743</b>	<b>1.225</b>	<b>1.721</b>			<b>13.084</b>	<b>1</b>	<b>10.625</b>		

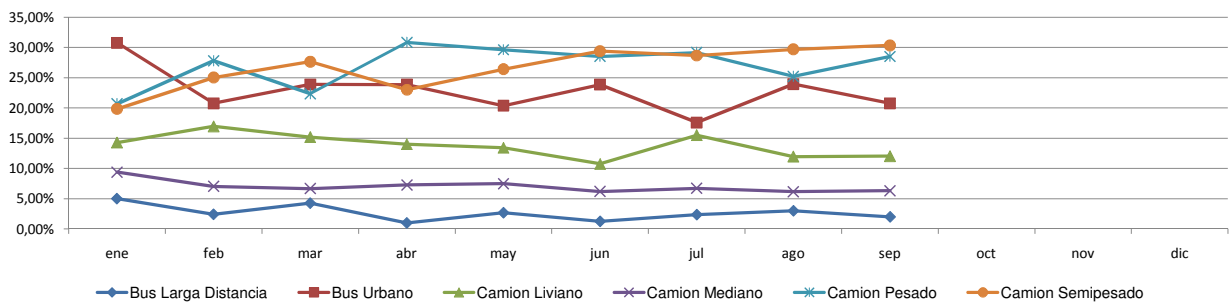


**Patentamientos por Ranking de Livianos y Pesados - Mercado Total**

**Comercial Liviano**



**Comercial Pesado**





**Patentamientos por Provincias y Tipos -**

Distrito	Automovil+Comercial Liviano							Comercial Pesado+Otros Pesados							Mercado Total					
	sep/10 (a)	sep/09 (b)	ago/10 (c)	Var a-b	Var a-c	Ac. 10	Ac. 09	Var 10-09	sep/10 (a)	sep/09 (b)	ago/10 (c)	Var a-b	Var a-c	Ac. 10	Ac. 09	Var 10-09	Ac. 10	Ac. 09	Var 10-09	Part %
CAPITAL FEDERAL	10.581	8.605	9.681	22,96%	9,30%	87.194	69.388	25,66%	741	459	691	61,44%	7,24%	5.750	3.990	44,11%	92.944	73.378	26,66%	18,02%
GRAN BUENOS AIRES	11.022	8.055	9.610	36,83%	14,69%	88.211	69.380	27,14%	281	218	255	28,90%	10,20%	1.968	1.665	18,20%	90.179	71.045	26,93%	17,48%
BUENOS AIRES	9.857	6.544	8.396	50,63%	17,40%	76.456	60.853	25,64%	282	207	293	36,23%	-3,75%	2.369	1.970	20,25%	78.825	62.823	25,47%	15,28%
CORDOBA	6.112	4.546	5.786	34,45%	5,63%	50.622	42.932	17,91%	176	188	204	-6,38%	-13,73%	1.472	1.507	-2,32%	52.094	44.439	17,23%	10,10%
SANTA FE	5.197	3.724	4.687	39,55%	10,88%	40.908	33.655	21,55%	252	158	230	59,49%	9,57%	1.727	1.374	25,69%	42.635	35.029	21,71%	8,27%
MENDOZA	2.283	1.672	2.199	36,54%	3,82%	19.049	14.488	31,48%	122	121	140	0,83%	-12,86%	855	863	-0,93%	19.904	15.351	29,66%	3,86%
ENTRE RIOS	1.571	991	1.361	58,53%	15,43%	12.747	9.316	36,83%	97	71	80	36,62%	21,25%	741	579	27,98%	13.488	9.895	36,31%	2,62%
TUCUMAN	1.289	794	1.174	62,34%	9,80%	10.969	7.841	39,89%	65	34	76	91,18%	-14,47%	557	439	26,88%	11.526	8.280	39,20%	2,23%
CORRIENTES	1.152	689	1.082	67,20%	6,47%	10.295	7.252	41,96%	113	46	103	145,65%	9,71%	818	609	34,32%	11.113	7.861	41,37%	2,15%
CHUBUT	1.208	928	1.105	30,17%	9,32%	10.204	9.382	8,76%	41	62	31	-33,87%	32,26%	346	440	-21,36%	10.550	9.822	7,41%	2,05%
SALTA	1.270	797	1.081	59,35%	17,48%	9.832	7.959	23,53%	72	49	87	46,94%	-17,24%	681	597	14,07%	10.513	8.556	22,87%	2,04%
NEUQUEN	1.097	894	1.046	22,71%	4,88%	9.353	8.022	16,59%	29	29	43	0,00%	-32,56%	322	398	-19,10%	9.675	8.420	14,90%	1,88%
SANTA CRUZ	982	728	869	34,89%	13,00%	7.736	6.770	14,27%	39	27	31	44,44%	25,81%	265	262	1,15%	8.001	7.032	13,78%	1,55%
CHACO	895	699	844	28,04%	6,04%	7.382	7.954	-7,19%	31	43	28	-27,91%	10,71%	343	467	-26,55%	7.725	8.421	-8,27%	1,50%
RIO NEGRO	909	615	822	47,80%	10,58%	7.317	5.698	28,41%	26	8	15	225,00%	73,33%	166	146	13,70%	7.483	5.844	28,05%	1,45%
MISIONES	802	494	668	62,35%	20,06%	6.450	4.609	39,94%	30	21	23	42,86%	30,43%	217	191	13,61%	6.667	4.800	38,90%	1,29%
JUJUY	680	430	587	58,14%	15,84%	5.861	4.372	34,06%	60	42	46	42,86%	30,43%	625	417	49,88%	6.486	4.789	35,44%	1,26%
SAN JUAN	581	456	595	27,41%	-2,35%	5.353	4.295	24,63%	45	27	32	66,67%	40,63%	274	193	41,97%	5.627	4.488	25,38%	1,09%
LA PAMPA	624	452	504	38,05%	23,81%	4.949	4.333	14,22%	26	15	13	73,33%	100,00%	124	147	-15,65%	5.073	4.480	13,24%	0,98%
TIERRA DEL FUEGO	703	443	635	58,69%	10,71%	4.857	3.342	45,33%	45	7	20	542,86%	125,00%	180	97	85,57%	5.037	3.439	46,47%	0,98%
SANTIAGO DEL ESTERO	565	382	531	47,91%	6,40%	4.820	3.735	29,05%	20	21	23	-4,76%	-13,04%	181	182	-0,55%	5.001	3.917	27,67%	0,97%
FORMOSA	523	326	525	60,43%	-0,38%	4.553	3.247	40,22%	14	10	23	40,00%	-39,13%	168	134	25,37%	4.721	3.381	39,63%	0,92%
SAN LUIS	497	374	455	32,89%	9,23%	4.189	3.269	28,14%	4	4	6	0,00%	-33,33%	75	108	-30,56%	4.264	3.377	26,27%	0,83%
LA RIOJA	357	244	326	46,31%	9,51%	3.070	2.374	29,32%	6	5	8	20,00%	-25,00%	69	73	-5,48%	3.139	2.447	28,28%	0,61%
CATAMARCA	345	266	328	29,70%	5,18%	3.074	2.787	10,30%	8	1	5	700,00%	60,00%	47	74	-36,49%	3.121	2.861	9,09%	0,61%



Patentamientos por Provincias y Tipos -

