



**Patentamientos por Marcas - Mercado Total**

	oct/10(a)	sep/10(b)	oct/09(c)	oct/08(d)	Var a-b	Var a-c	Var a-d	Ac. 10	Ac. 09	Var 10-09
<b>Automovil</b>	39.533	49.653	31.125	38.328	-20,38%	27,01%	3,14%	439.440	354.767	23,87%
<b>Comercial Liviano</b>	9.341	11.770	7.072	9.479	-20,64%	32,08%	-1,46%	105.206	80.681	30,40%
<b>Comercial Pesado</b>	1.523	1.755	1.156	2.068	-13,22%	31,75%	-26,35%	14.638	11.788	24,18%
<b>Otros Pesados</b>	802	877	610	1.160	-8,55%	31,48%	-30,86%	8.034	6.902	16,40%
<b>Total</b>	<b>51.199</b>	<b>64.055</b>	<b>39.963</b>	<b>51.035</b>	<b>-20,07%</b>	<b>28,12%</b>	<b>0,32%</b>	<b>567.318</b>	<b>454.138</b>	<b>24,92%</b>
<b>Prom. diario</b>	2.695	2.912	1.903	2.320				2.767	2.226	
<b>Dias habiles</b>	19	22	21	22				205	204	

Patentamientos por origen		
	10-Oct	Ac. 10
Importados	31.727	346.130
Nacionales	19.472	221.188



■ Importados ■ Nacionales

**Patentamientos Mensuales**

	ene	feb	mar	abr	may	jun	jul	ago	sep	oct	nov	dic
2010	78.466	44.760	57.287	50.947	50.820	54.810	57.571	57.403	64.055	51.199		
2009	73.927	39.075	41.301	40.534	40.147	44.103	46.633	42.434	46.021	39.963	37.493	23.282
<b>Var% 10-09</b>	<b>6,14%</b>	<b>14,55%</b>	<b>38,71%</b>	<b>25,69%</b>	<b>26,58%</b>	<b>24,28%</b>	<b>23,46%</b>	<b>35,28%</b>	<b>39,19%</b>	<b>28,12%</b>	<b>-100,00%</b>	<b>-100,00%</b>
2008	85.811	46.476	44.277	56.149	56.809	49.082	58.414	51.110	56.197	51.035	35.528	19.891
2007	82.552	38.841	47.379	41.626	47.231	42.139	50.181	54.285	48.857	49.497	40.640	24.527

**Patentamientos por Marcas - Totales**

Marca	oct/10(a)	Part %	oct/09(c)	Part %	sep/10(e)	Part %	Var a-c	Var a-e	2010 ene - oct	2010 Part %	2009 ene - oct	2009 Part %	Var 2010-2009
Volkswagen	9.846	19,51%	8.589	21,79%	11.718	18,52%	14,63%	-15,98%	106.790	19,07%	87.089	19,44%	22,62%
Chevrolet	8.220	16,29%	4.793	12,16%	9.764	15,43%	71,50%	-15,81%	87.074	15,55%	62.922	14,05%	38,38%
Ford	5.841	11,57%	5.654	14,34%	7.241	11,45%	3,31%	-19,33%	69.226	12,36%	60.572	13,52%	14,29%
Renault	5.684	11,26%	4.865	12,34%	8.705	13,76%	16,83%	-34,70%	68.949	12,31%	55.152	12,31%	25,02%
Fiat	4.633	9,18%	4.104	10,41%	6.449	10,19%	12,89%	-28,16%	57.461	10,26%	44.202	9,87%	30,00%
Peugeot	4.747	9,41%	3.149	7,99%	5.460	8,63%	50,75%	-13,06%	48.447	8,65%	40.798	9,11%	18,75%
Toyota	2.367	4,69%	2.322	5,89%	2.776	4,39%	1,94%	-14,73%	27.810	4,97%	26.550	5,93%	4,75%
Citroen	2.050	4,06%	1.385	3,51%	2.351	3,72%	48,01%	-12,80%	20.717	3,70%	18.121	4,05%	14,33%
Honda	1.699	3,37%	1.094	2,78%	2.285	3,61%	55,30%	-25,65%	18.242	3,26%	13.606	3,04%	34,07%
Mercedes Benz	909	1,80%	791	2,01%	1.169	1,85%	14,92%	-22,24%	10.679	1,91%	9.279	2,07%	15,09%
Nissan	895	1,77%	345	0,88%	1.175	1,86%	159,42%	-23,83%	8.348	1,49%	3.550	0,79%	135,15%
Suzuki	468	0,93%	505	1,28%	613	0,97%	-7,33%	-23,65%	6.318	1,13%	5.853	1,31%	7,94%
Hyundai	610	1,21%	290	0,74%	642	1,01%	110,34%	-4,98%	4.794	0,86%	3.111	0,69%	54,10%
Audi	255	0,51%	158	0,40%	330	0,52%	61,39%	-22,73%	3.626	0,65%	2.462	0,55%	47,28%
Iveco	389	0,77%	223	0,57%	485	0,77%	74,44%	-19,79%	3.210	0,57%	1.995	0,45%	60,90%
BMW	266	0,53%	158	0,40%	312	0,49%	68,35%	-14,74%	3.129	0,56%	1.993	0,44%	57,00%
Kia	272	0,54%	194	0,49%	255	0,40%	40,21%	6,67%	2.511	0,45%	1.901	0,42%	32,09%
Dodge	161	0,32%	122	0,31%	189	0,30%	31,97%	-14,81%	2.454	0,44%	1.179	0,26%	108,14%
Chery	288	0,57%	93	0,24%	295	0,47%	209,68%	-2,37%	1.962	0,35%	1.119	0,25%	75,34%
Scania	137	0,27%	50	0,13%	178	0,28%	174,00%	-23,03%	1.197	0,21%	816	0,18%	46,69%
Mitsubishi	81	0,16%	68	0,17%	94	0,15%	19,12%	-13,83%	1.004	0,18%	626	0,14%	60,38%
Jeep	102	0,20%	50	0,13%	80	0,13%	104,00%	27,50%	882	0,16%	796	0,18%	10,80%
Chrysler	116	0,23%	59	0,15%	166	0,26%	96,61%	-30,12%	868	0,15%	881	0,20%	-1,48%
Agrale	63	0,12%	75	0,19%	92	0,15%	-16,00%	-31,52%	745	0,13%	562	0,13%	32,56%
Randon	65	0,13%	51	0,13%	57	0,09%	27,45%	14,04%	568	0,10%	456	0,10%	24,56%
Subaru	49	0,10%	42	0,11%	80	0,13%	16,67%	-38,75%	566	0,10%	315	0,07%	79,68%
Seat	59	0,12%	64	0,16%	80	0,13%	-7,81%	-26,25%	548	0,10%	536	0,12%	2,24%
Volvo	58	0,11%	43	0,11%	47	0,07%	34,88%	23,40%	544	0,10%	495	0,11%	9,90%
Mini	35	0,07%	37	0,09%	42	0,07%	-5,41%	-16,67%	436	0,08%	336	0,08%	29,76%
Puma de Tat	30	0,06%	4	0,01%	37	0,06%	650,00%	-18,92%	265	0,05%	151	0,03%	75,50%
Alfa Romeo	40	0,08%	6	0,02%	39	0,06%	566,67%	2,56%	242	0,04%	29	0,01%	734,48%
MONTENEGRO	13	0,03%	14	0,04%	26	0,04%	-7,14%	-50,00%	181	0,03%	175	0,04%	3,43%
Porsche	4	0,01%	3	0,01%	4	0,01%	33,33%	0,00%	87	0,02%	73	0,02%	19,18%
Land Rover	8	0,02%	14	0,04%	10	0,02%	-42,86%	-20,00%	73	0,01%	103	0,02%	-29,13%
Montesur	6	0,01%	4	0,01%	8	0,01%	50,00%	-25,00%	52	0,01%	33	0,01%	57,58%
Materfer	1	0,00%	4	0,01%	5	0,01%	-75,00%	-80,00%	11	0,00%	38	0,01%	-71,05%
Jaguar		0,00%		0,00%		0,00%	N/D	N/D	8	0,00%	4	0,00%	100,00%
Mack		0,00%		0,00%	1	0,00%	N/D	-100,00%	7	0,00%	9	0,00%	-22,22%
Ferrari		0,00%		0,00%		0,00%	N/D	N/D	5	0,00%	4	0,00%	25,00%
Maserati		0,00%		0,00%		0,00%	N/D	N/D	1	0,00%		0,00%	N/D
Lexus		0,00%		0,00%		0,00%	N/D	N/D		0,00%	1	0,00%	-100,00%
<b>Total</b>	<b>50.467</b>		<b>39.422</b>		<b>63.260</b>				<b>560.037</b>		<b>447.893</b>		

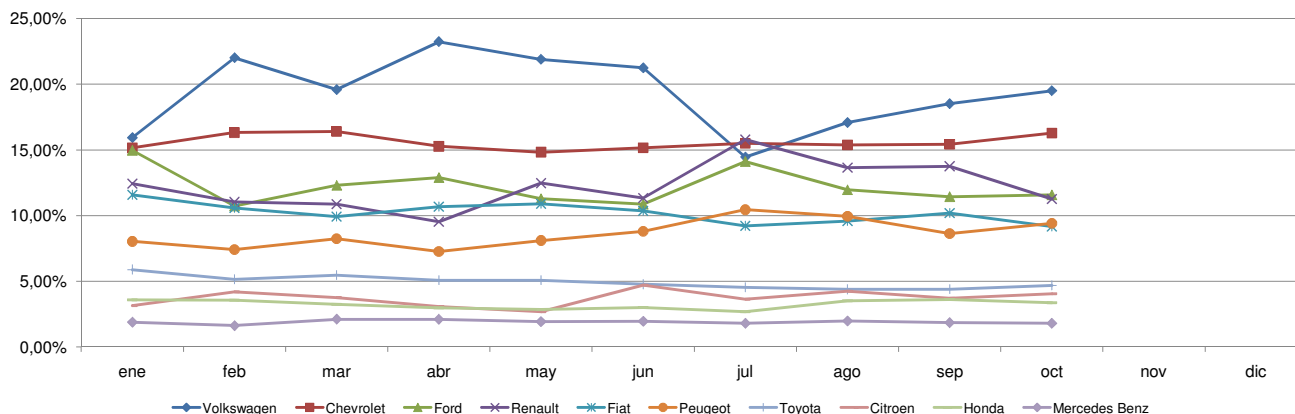


**Patentamientos por Marcas - Mercado Total**

Patentamientos por Marcas - Autos + Livianos								2010	2010	2009	2009	Var	
Marca	oct/10(a)	Part %	oct/09(c)	Part %	sep/10(e)	Part %	Var a-c	Var a-e	ene - oct	Part %	ene - oct	Part %	2010-2009
Volkswagen	9.687	19,82%	8.477	22,19%	11.558	18,82%	14,27%	-16,19%	105.425	19,36%	86.043	19,76%	22,53%
Chevrolet	8.220	16,82%	4.793	12,55%	9.764	15,90%	71,50%	-15,81%	87.074	15,99%	62.922	14,45%	38,38%
Renault	5.649	11,56%	4.829	12,64%	8.685	14,14%	16,98%	-34,96%	68.664	12,61%	54.884	12,60%	25,11%
Ford	5.573	11,40%	5.387	14,10%	6.941	11,30%	3,45%	-19,71%	66.550	12,22%	58.372	13,41%	14,01%
Fiat	4.633	9,48%	4.104	10,74%	6.449	10,50%	12,89%	-28,16%	57.461	10,55%	44.202	10,15%	30,00%
Peugeot	4.747	9,71%	3.149	8,24%	5.460	8,89%	50,75%	-13,06%	48.447	8,90%	40.798	9,37%	18,75%
Toyota	2.367	4,84%	2.322	6,08%	2.776	4,52%	1,94%	-14,73%	27.810	5,11%	26.550	6,10%	4,75%
Citroen	2.050	4,19%	1.385	3,63%	2.351	3,83%	48,01%	-12,80%	20.717	3,80%	18.121	4,16%	14,33%
Honda	1.699	3,48%	1.094	2,86%	2.285	3,72%	55,30%	-25,65%	18.242	3,35%	13.606	3,12%	34,07%
Nissan	895	1,83%	345	0,90%	1.175	1,91%	159,42%	-23,83%	8.348	1,53%	3.550	0,82%	135,15%
Suzuki	468	0,96%	505	1,32%	613	1,00%	-7,33%	-23,65%	6.318	1,16%	5.853	1,34%	7,94%
Mercedes Benz	437	0,89%	373	0,98%	619	1,01%	17,16%	-29,40%	5.537	1,02%	4.316	0,99%	28,29%
Hyundai	580	1,19%	271	0,71%	613	1,00%	114,02%	-5,38%	4.547	0,83%	2.961	0,68%	53,56%
Audi	255	0,52%	158	0,41%	330	0,54%	61,39%	-22,73%	3.626	0,67%	2.462	0,57%	47,28%
BMW	266	0,54%	158	0,41%	312	0,51%	68,35%	-14,74%	3.129	0,57%	1.993	0,56%	57,00%
Kia	272	0,56%	194	0,51%	255	0,42%	40,21%	6,67%	2.511	0,46%	1.901	0,44%	32,09%
Dodge	161	0,33%	122	0,32%	189	0,31%	31,97%	-14,81%	2.454	0,45%	1.179	0,27%	108,14%
Chery	288	0,59%	93	0,24%	295	0,48%	209,68%	-2,37%	1.962	0,36%	1.119	0,26%	75,34%
Mitsubishi	81	0,17%	68	0,18%	94	0,15%	19,12%	-13,83%	1.004	0,18%	626	0,14%	60,38%
Jeep	102	0,21%	50	0,13%	80	0,13%	104,00%	27,50%	882	0,16%	796	0,18%	10,80%
Iveco	116	0,24%	75	0,20%	135	0,22%	54,67%	-14,07%	874	0,16%	707	0,16%	23,62%
Chrysler	116	0,24%	59	0,15%	166	0,27%	96,61%	-30,12%	868	0,16%	881	0,20%	-1,48%
Subaru	49	0,10%	42	0,11%	80	0,13%	16,67%	-38,75%	566	0,10%	315	0,07%	79,68%
Seat	59	0,12%	64	0,17%	80	0,13%	-7,81%	-26,25%	548	0,10%	536	0,12%	2,24%
Mini	35	0,07%	37	0,10%	42	0,07%	-5,41%	-16,67%	436	0,08%	336	0,08%	29,76%
Alfa Romeo	40	0,08%	6	0,02%	39	0,06%	566,67%	2,56%	242	0,04%	29	0,01%	734,48%
Volvo	16	0,03%	20	0,05%	20	0,03%	-20,00%	-20,00%	220	0,04%	203	0,05%	8,37%
Porsche	4	0,01%	3	0,01%	4	0,01%	33,33%	0,00%	87	0,02%	73	0,02%	19,18%
Land Rover	8	0,02%	14	0,04%	10	0,02%	-42,86%	-20,00%	73	0,01%	103	0,02%	-29,13%
Jaguar		0,00%		0,00%		0,00%	N/D	N/D	8	0,00%	4	0,00%	100,00%
Ferrari		0,00%		0,00%		0,00%	N/D	N/D	5	0,00%	4	0,00%	25,00%
Maserati		0,00%		0,00%		0,00%	N/D	N/D	1	0,00%		0,00%	N/D
Lexus		0,00%		0,00%		0,00%	N/D	N/D		0,00%	1	0,00%	-100,00%
<b>Total</b>	<b>48.873</b>		<b>38.197</b>		<b>61.420</b>				<b>544.636</b>		<b>435.446</b>		

Patentamientos por Marcas - Camiones + Buses								2010	2010	2009	2009	Var	
Marca	oct/10(a)	Part %	oct/09(c)	Part %	sep/10(e)	Part %	Var a-c	Var a-e	ene - oct	Part %	ene - oct	Part %	2010-2009
Mercedes Benz	472	29,61%	418	34,12%	550	29,89%	12,92%	-14,18%	5.142	33,39%	4.963	39,87%	3,61%
Ford	268	16,81%	267	21,80%	300	16,30%	0,37%	-10,67%	2.676	17,38%	2.200	17,67%	21,64%
Iveco	273	17,13%	148	12,08%	350	19,02%	84,46%	-22,00%	2.336	15,17%	1.288	10,35%	81,37%
Volkswagen	159	9,97%	112	9,14%	160	8,70%	41,96%	-6,22%	1.365	8,86%	1.046	8,40%	30,50%
Scania	137	8,59%	50	4,08%	178	9,67%	174,00%	-23,03%	1.197	7,77%	816	6,56%	46,69%
Agrale	63	3,95%	75	6,12%	92	5,00%	-16,00%	-31,52%	745	4,84%	562	4,52%	32,56%
Randon	65	4,08%	51	4,16%	57	3,10%	27,45%	14,04%	568	3,69%	456	3,66%	24,56%
Volvo	42	2,63%	23	1,88%	27	1,47%	82,61%	55,56%	324	2,10%	292	2,35%	10,96%
Renault	35	2,20%	36	2,94%	20	1,09%	-2,78%	75,00%	285	1,85%	268	2,15%	6,34%
Puma de Tat	30	1,88%	4	0,33%	37	2,01%	650,00%	-18,92%	265	1,72%	151	1,21%	75,50%
Hyundai	30	1,88%	19	1,55%	29	1,58%	57,89%	3,45%	247	1,60%	150	1,21%	64,67%
MONTENEGRO	13	0,82%	14	1,14%	26	1,41%	-7,14%	-50,00%	181	1,18%	175	1,41%	3,43%
Montesur	6	0,38%	4	0,33%	8	0,43%	50,00%	-25,00%	52	0,34%	33	0,27%	57,58%
Materfer	1	0,06%	4	0,33%	5	0,27%	-75,00%	-80,00%	11	0,07%	38	0,31%	-71,05%
Mack		0,00%		0,00%	1	0,05%	N/D	-100,00%	7	0,05%	9	0,07%	-22,22%
<b>Total</b>	<b>1.594</b>		<b>1.225</b>		<b>1.840</b>				<b>15.401</b>		<b>12.447</b>		

**Participacion por Marcas - Evolucion Mensual**

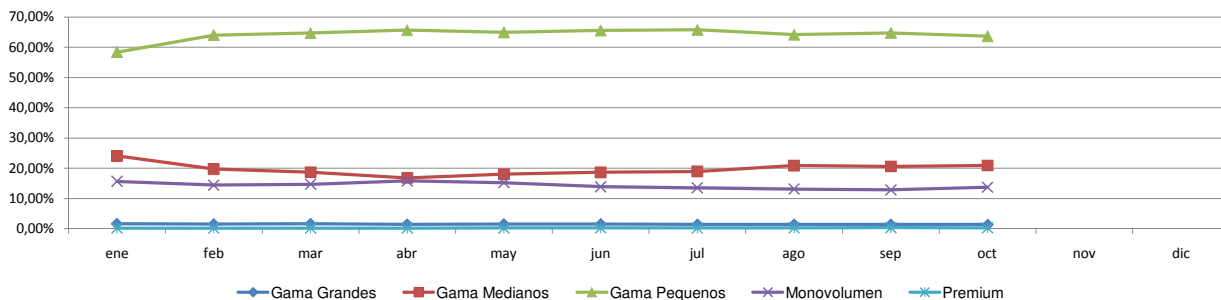




**Patentamientos por Ranking de Automoviles - Mercado Total**

Rank.	Ranking Por Modelos - Automoviles										
	Modelo	oct/10 (a)	oct/09 (b)	sep/10 (c)	Var a-b	Var a-c	Ac. 10	Part %	Ac. 09	Part %	Var 10-09
1	Chevrolet CORSA	3.066	1.745	3.725	75,70%	-17,69%	30.815	7,01%	24.718	6,97%	24,67%
2	Peugeot 207 COMPACT	2.222	1.708	2.744	30,09%	-19,02%	26.228	5,97%	21.427	6,04%	22,41%
3	Volkswagen GOL TREND	1.799	1.370	1.866	31,31%	-3,59%	21.674	4,93%	18.424	5,19%	17,64%
4	Renault SANDERO	1.849	1.240	2.580	49,11%	-28,33%	19.671	4,48%	9.500	2,68%	107,06%
5	Volkswagen SURAN	1.493	1.581	1.468	-5,57%	1,70%	18.502	4,21%	13.892	3,92%	33,18%
6	Ford ECOSPORT	1.634	1.441	2.140	13,39%	-23,64%	18.025	4,10%	15.771	4,45%	14,29%
7	Volkswagen GOL	1.176	2.195	1.374	-46,42%	-14,41%	16.705	3,80%	16.683	4,70%	0,13%
8	Renault CLIO	1.122	850	2.042	32,00%	-45,05%	12.307	2,80%	12.512	3,53%	-1,64%
9	Ford KA	891	928	1.329	-3,99%	-32,96%	12.076	2,75%	10.092	2,84%	19,66%
10	Fiat SIENA	974	1.036	1.271	-5,98%	-23,37%	11.685	2,66%	9.861	2,78%	18,50%
11	Chevrolet AGILE	1.126	484	1.423	132,64%	-20,87%	11.079	2,52%	529	0,15%	1994,33%
12	Chevrolet AVEO	1.314	153	1.340	758,82%	-1,94%	10.918	2,48%	4.483	1,26%	143,54%
13	Volkswagen BORA	802	987	1.363	-18,74%	-41,16%	10.394	2,37%	9.573	2,70%	8,58%
14	Volkswagen VOYAGE	866	717	1.011	20,78%	-14,34%	10.005	2,28%	7.732	2,18%	29,40%
15	Ford FIESTA	843	657	770	28,31%	9,48%	9.910	2,26%	9.909	2,79%	0,01%
16	Ford FOCUS II	875	490	996	78,57%	-12,15%	9.334	2,12%	5.041	1,42%	85,16%
17	Fiat PALIO	743	660	1.302	12,58%	-42,93%	8.772	2,00%	8.108	2,29%	8,19%
18	Honda FIT	810	681	1.086	18,94%	-25,41%	8.092	1,84%	7.568	2,13%	6,92%
19	Fiat UNO	478	518	987	-7,72%	-51,57%	8.034	1,83%	7.158	2,02%	12,24%
20	Fiat PUNTO	377	572	705	-34,09%	-46,52%	7.992	1,82%	4.273	1,20%	87,03%
21	Toyota COROLLA	709	627	809	13,08%	-12,36%	7.834	1,78%	6.729	1,90%	16,42%
22	Citroen C4	862	615	1.009	40,16%	-14,57%	7.790	1,77%	7.604	2,14%	2,45%
23	Peugeot 307	780	482	794	61,83%	-1,76%	7.215	1,64%	7.417	2,09%	-2,72%
24	Volkswagen FOX	964	639	1.298	50,86%	-25,73%	7.058	1,61%	5.267	1,48%	34,00%
25	Renault SYMBOL	458	519	638	-11,75%	-28,21%	6.697	1,52%	4.617	1,30%	45,05%
26	Renault LOGAN	585	473	779	23,68%	-24,90%	6.626	1,51%	4.329	1,22%	53,06%
27	Chevrolet MERIVA	392	432	475	-9,26%	-17,47%	5.979	1,36%	5.448	1,54%	9,75%
28	Fiat PALIO WEEKEND	501	335	657	49,55%	-23,74%	5.673	1,29%	4.530	1,28%	25,23%
29	Nissan TIIDA	556	293	821	89,76%	-32,28%	5.620	1,28%	2.703	0,76%	107,92%
30	Suzuki FUN	424	442	532	-4,07%	-20,30%	5.502	1,25%	3.746	1,06%	46,88%
31	Renault KANGOO	425	462	652	-8,01%	-34,82%	5.344	1,22%	4.741	1,34%	12,72%
32	Chevrolet ASTRA	436	445	603	-2,02%	-27,69%	5.169	1,18%	6.460	1,82%	-19,98%
33	Volkswagen VENTO	653	378	661	72,75%	-1,21%	5.163	1,17%	4.120	1,16%	25,32%
34	Chevrolet CORSA II	476	338	525	40,83%	-9,33%	5.151	1,17%	5.319	1,50%	-3,16%
35	Citroen C3	402	266	452	51,13%	-11,06%	4.837	1,10%	3.884	1,09%	24,54%
36	Honda CITY	398	5	607	7860,00%	-34,43%	4.793	1,09%	5	0,00%	95760,00%
37	Peugeot 206	479	287	534	66,90%	-10,30%	4.676	1,06%	3.402	0,96%	37,45%
38	Renault MEGANE II	257	212	329	21,23%	-21,88%	4.398	1,00%	4.340	1,22%	1,34%
39	Chevrolet CORSA SW	173	251	266	-31,08%	-34,96%	3.033	0,69%	3.699	1,04%	-18,00%
40	Chevrolet VECTRA	216	166	274	30,12%	-21,17%	3.026	0,69%	2.300	0,65%	31,57%
41	Citroen PICASSO	312	140	302	122,86%	3,31%	2.930	0,67%	1.909	0,54%	53,48%
42	Ford FOCUS	131	821	168	-84,04%	-22,02%	2.573	0,59%	6.508	1,83%	-60,46%
43	Peugeot PARTNER	337	109	389	209,17%	-13,37%	2.374	0,54%	1.262	0,36%	88,11%
44	Volkswagen FOX CROSSFOX	312	124	435	151,61%	-28,28%	2.185	0,50%	1.967	0,55%	11,08%
45	Fiat IDEA	152	114	136	33,33%	11,76%	2.074	0,47%	1.808	0,51%	14,71%
46	Citroen BERLINGO	219	61	299	259,02%	-26,76%	1.924	0,44%	1.383	0,39%	39,12%
47	Honda CIVIC	144	157	187	-8,28%	-22,99%	1.915	0,44%	2.706	0,76%	-29,23%
48	Dodge JOURNEY	142	94	151	51,06%	-5,96%	1.909	0,43%	736	0,21%	159,38%
49	Fiat LINEA	103	172	169	-40,12%	-39,05%	1.834	0,42%	1.302	0,37%	40,86%
50	Volkswagen GOL COUNTRY	210	137	293	53,28%	-28,33%	1.821	0,41%	2.031	0,57%	-10,34%
51	Otros	2.865	1.516	2.885	88,98%	-0,69%	24.092	5,48%	25.239	7,11%	-4,54%
<b>Total</b>		<b>39.533</b>	<b>31.125</b>	<b>49.651</b>			<b>439.433</b>	<b>1</b>	<b>354.765</b>		

**Autos - Participacion por Segmento**





**Patentamientos por Ranking de Livianos y Pesados - Mercado Total**

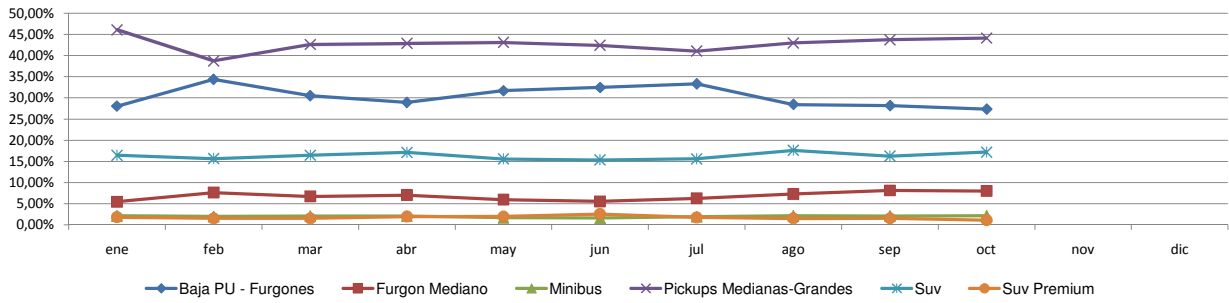
Rank.	Comercial Liviano										
	Modelo	oct/10 (a)	oct/09 (b)	sep/10 (c)	Var a-b	Var a-c	Ac. 10	Part %	Ac. 09	Part %	Var 10-09
1	Toyota HILUX	1.307	1.469	1.572	-11,03%	-16,86%	16.278	15,47%	16.620	20,60%	-2,06%
2	Ford RANGER	788	824	1.106	-4,37%	-28,75%	11.005	10,46%	8.624	10,69%	27,61%
3	Renault KANGOO FURGON	499	788	922	-36,68%	-45,88%	8.307	7,90%	7.574	9,39%	9,68%
4	Chevrolet S-10	451	414	629	8,94%	-28,30%	7.350	6,99%	5.104	6,33%	44,00%
5	Fiat FIORINO	505	397	723	27,20%	-30,15%	6.697	6,37%	4.453	5,52%	50,39%
6	Peugeot PARTNER FURGON	603	428	704	40,89%	-14,35%	5.624	5,35%	4.675	5,79%	20,30%
7	Volkswagen AMAROK	1.068		1.277	N/D	-16,37%	5.501	5,23%		0,00%	N/D
8	Volkswagen SAVEIRO	142	126	188	12,70%	-24,47%	3.690	3,51%	2.734	3,39%	34,97%
9	Honda CRV	327	203	369	61,08%	-11,38%	3.107	2,95%	2.683	3,33%	15,80%
10	Renault MASTER	275	106	508	159,43%	-45,87%	2.883	2,74%	2.187	2,71%	31,82%
11	Fiat STRADA	407	128	316	217,97%	28,80%	2.785	2,65%	1.082	1,34%	157,39%
12	Mercedes Benz SPRINTER	223	221	251	0,90%	-11,16%	2.669	2,54%	2.316	2,87%	15,24%
13	Citroen BERLINGO FURGON	169	216	195	-21,76%	-13,33%	2.580	2,45%	2.633	3,26%	-2,01%
14	Nissan FRONTIER	247	3	266	8133,33%	-7,14%	1.937	1,84%	218	0,27%	788,53%
15	Toyota HILUX SW4	157	140	189	12,14%	-16,93%	1.853	1,76%	1.789	2,22%	3,58%
16	Ford F 100	175	143	178	22,38%	-1,69%	1.734	1,65%	1.449	1,80%	19,67%
17	Chery TIGGO	146	93	194	56,99%	-24,74%	1.645	1,56%	1.119	1,39%	47,01%
18	Toyota RAV 4	135	66	142	104,55%	-4,93%	1.407	1,34%	986	1,22%	42,70%
19	Hyundai TUCSON	64	92	37	-30,43%	72,97%	921	0,88%	863	1,07%	6,72%
20	Renault KOLEOS	84	53	118	58,49%	-28,81%	875	0,83%	446	0,55%	96,19%
21	Otros	1.568	1.162	1.885	34,94%	-16,82%	16.355	15,55%	13.126	16,27%	24,60%
<b>Total</b>		<b>9.340</b>	<b>7.072</b>	<b>11.769</b>			<b>105.203</b>	<b>1</b>	<b>80.681</b>		

Rank.	Comercial Pesado										
	Modelo	oct/10 (a)	oct/09 (b)	sep/10 (c)	Var a-b	Var a-c	Ac. 10	Part %	Ac. 09	Part %	Var 10-09
1	Iveco 170 E	206	53	256	288,68%	-19,53%	1.482	10,15%	616	5,23%	140,58%
2	Mercedes Benz 1418	84	71	72	18,31%	16,67%	1.052	7,21%	713	6,05%	47,55%
3	Ford CARGO 1722 E	72	85	102	-15,29%	-29,41%	940	6,44%	717	6,09%	31,10%
4	Ford F-4000	72	54	78	33,33%	-7,69%	647	4,43%	533	4,52%	21,39%
5	Mercedes Benz 1618L	72		77	N/D	-6,49%	617	4,23%		0,00%	N/D
6	Mercedes Benz L-1624	19	40	21	-52,50%	-9,52%	412	2,82%	671	5,69%	-38,60%
7	Volkswagen 17220	47	29	54	62,07%	-12,96%	402	2,75%	326	2,77%	23,31%
8	Mercedes Benz 710	40	30	33	33,33%	21,21%	381	2,61%	303	2,57%	25,74%
9	Iveco 450 E	39	55	41	-29,09%	-4,88%	362	2,48%	244	2,07%	48,36%
10	Mercedes Benz ATEGO 1725	28	33	63	-15,15%	-55,56%	355	2,43%	377	3,20%	-5,84%
11	Scania G340	27	24	43	12,50%	-37,21%	315	2,16%	282	2,39%	11,70%
12	Mercedes Benz LS 1634	34	23	37	47,83%	-8,11%	306	2,10%	297	2,52%	3,03%
13	Agrale MT12	24	16	47	50,00%	-48,94%	267	1,83%	271	2,30%	-1,48%
14	Volkswagen 13180	29	27	43	7,41%	-32,56%	263	1,80%	185	1,57%	42,16%
15	Volkswagen 19320	31	11	22	181,82%	40,91%	250	1,71%	119	1,01%	110,08%
16	Ford CARGO 712	27	18	18	50,00%	50,00%	237	1,62%	182	1,54%	30,22%
17	Scania P340	42	5	52	740,00%	-19,23%	230	1,58%	74	0,63%	210,81%
18	Ford CARGO 915 E	32	37	29	-13,51%	10,34%	226	1,55%	174	1,48%	29,89%
19	Mercedes Benz OF 1722	14	17	36	-17,65%	-61,11%	225	1,54%	283	2,40%	-20,49%
20	Ford CARGO 1517 E	18	17	29	5,88%	-37,93%	214	1,47%	182	1,54%	17,58%
21	Otros	553	511	596	8,22%	-7,21%	5.417	37,10%	5.234	44,42%	3,50%
<b>Total</b>		<b>1.510</b>	<b>1.156</b>	<b>1.749</b>			<b>14.600</b>	<b>1</b>	<b>11.783</b>		

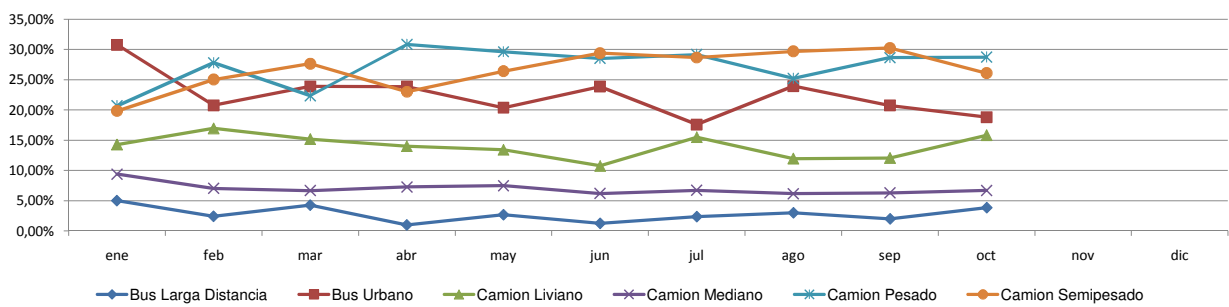


### Patentamientos por Ranking de Livianos y Pesados - Mercado Total

#### Comercial Liviano



#### Comercial Pesado





**Patentamientos por Provincias y Tipos -**

Distrito	Automovil+Comercial Liviano							Comercial Pesado+Otros Pesados							Mercado Total					
	oct/10 (a)	oct/09 (b)	sep/10 (c)	Var a-b	Var a-c	Ac. 10	Ac. 09	Var 10-09	oct/10 (a)	oct/09 (b)	sep/10 (c)	Var a-b	Var a-c	Ac. 10	Ac. 09	Var 10-09	Ac. 10	Ac. 09	Var 10-09	Part %
CAPITAL FEDERAL	9.159	7.721	10.619	18,62%	-13,75%	96.391	77.107	25,01%	708	435	743	62,76%	-4,71%	6.460	4.427	45,92%	102.851	81.534	26,14%	18,13%
GRAN BUENOS AIRES	8.998	7.268	11.092	23,80%	-18,88%	97.279	76.648	26,92%	222	167	281	32,93%	-21,00%	2.190	1.832	19,54%	99.469	78.480	26,74%	17,53%
BUENOS AIRES	7.708	5.636	9.887	36,76%	-22,04%	84.194	66.489	26,63%	275	212	282	29,72%	-2,48%	2.644	2.182	21,17%	86.838	68.671	26,46%	15,31%
CORDOBA	4.650	3.944	6.139	17,90%	-24,25%	55.299	46.876	17,97%	175	124	177	41,13%	-1,13%	1.648	1.631	1,04%	56.947	48.507	17,40%	10,04%
SANTA FE	4.224	3.072	5.205	37,50%	-18,85%	45.140	36.727	22,91%	204	148	253	37,84%	-19,37%	1.932	1.522	26,94%	47.072	38.249	23,07%	8,30%
MENDOZA	1.801	1.401	2.283	28,55%	-21,11%	20.850	15.889	31,22%	84	121	123	-30,58%	-31,71%	940	984	-4,47%	21.790	16.873	29,14%	3,84%
ENTRE RIOS	1.290	789	1.581	63,50%	-18,41%	14.047	10.105	39,01%	84	68	97	23,53%	-13,40%	825	647	27,51%	14.872	10.752	38,32%	2,62%
TUCUMAN	1.082	706	1.334	53,26%	-18,89%	12.096	8.547	41,52%	59	69	65	-14,49%	-9,23%	616	508	21,26%	12.712	9.055	40,39%	2,24%
CORRIENTES	971	537	1.164	80,82%	-16,58%	11.278	7.789	44,79%	98	52	114	88,46%	-14,04%	917	661	38,73%	12.195	8.450	44,32%	2,15%
CHUBUT	928	740	1.208	25,41%	-23,18%	11.132	10.122	9,98%	26	68	41	-61,76%	-36,59%	372	508	-26,77%	11.504	10.630	8,22%	2,03%
SALTA	865	775	1.270	11,61%	-31,89%	10.697	8.734	22,48%	65	38	72	71,05%	-9,72%	746	635	17,48%	11.443	9.369	22,14%	2,02%
NEUQUEN	807	678	1.097	19,03%	-26,44%	10.160	8.700	16,78%	24	34	29	-29,41%	-17,24%	346	432	-19,91%	10.506	9.132	15,05%	1,85%
SANTA CRUZ	650	587	999	10,73%	-34,93%	8.403	7.357	14,22%	24	24	39	0,00%	-38,46%	289	286	1,05%	8.692	7.643	13,72%	1,53%
CHACO	677	563	895	20,25%	-24,36%	8.059	8.517	-5,38%	35	35	31	0,00%	12,90%	378	502	-24,70%	8.437	9.019	-6,45%	1,49%
RIO NEGRO	674	531	909	26,93%	-25,85%	7.991	6.229	28,29%	7	13	26	-46,15%	-73,08%	173	159	8,81%	8.164	6.388	27,80%	1,44%
MISIONES	599	373	809	60,59%	-25,96%	7.056	4.982	41,63%	43	16	30	168,75%	43,33%	260	207	25,60%	7.316	5.189	40,99%	1,29%
JUJUY	481	360	709	33,61%	-32,16%	6.371	4.732	34,64%	52	50	61	4,00%	-14,75%	678	467	45,18%	7.049	5.199	35,58%	1,24%
SAN JUAN	437	381	581	14,70%	-24,78%	5.790	4.676	23,82%	33	14	45	135,71%	-26,67%	307	207	48,31%	6.097	4.883	24,86%	1,07%
TIERRA DEL FUEGO	624	441	703	41,50%	-11,24%	5.481	3.783	44,89%	33	19	45	73,68%	-26,67%	213	116	83,62%	5.694	3.899	46,04%	1,00%
LA PAMPA	483	371	644	30,19%	-25,00%	5.452	4.704	15,90%	20	12	26	66,67%	-23,08%	144	159	-9,43%	5.596	4.863	15,07%	0,99%
SANTIAGO DEL ESTERO	379	287	572	32,06%	-33,74%	5.206	4.022	29,44%	12	17	20	-29,41%	-40,00%	193	199	-3,02%	5.399	4.221	27,91%	0,95%
FORMOSA	402	277	524	45,13%	-23,28%	4.956	3.524	40,64%	10	21	14	-52,38%	-28,57%	178	155	14,84%	5.134	3.679	39,55%	0,90%
SAN LUIS	419	318	497	31,76%	-15,69%	4.608	3.587	28,46%	9	2	4	350,00%	125,00%	84	110	-23,64%	4.692	3.697	26,91%	0,83%
LA RIOJA	276	213	357	29,58%	-22,69%	3.346	2.587	29,34%	12	1	6	1100,00%	100,00%	81	74	9,46%	3.427	2.661	28,79%	0,60%
CATAMARCA	290	228	345	27,19%	-15,94%	3.364	3.015	11,58%	11	6	8	83,33%	37,50%	58	80	-27,50%	3.422	3.095	10,57%	0,60%



Patentamientos por Provincias y Tipos -

