



Patentamientos por Marcas - Mercado Total

	dic/09(a)	nov/09(b)	dic/08(c)	dic/07(d)	Var a-b	Var a-c	Var a-d	Ac. 09	Ac. 08	Var 09-08
Automovil	18.713	29.777	15.134	19.138	-37,16%	23,65%	-2,22%	403.175	456.442	-11,67%
Comercial Liviano	3.519	6.126	3.439	3.878	-42,56%	2,33%	-9,26%	90.416	117.239	-22,88%
Comercial Pesado	716	1.026	852	906	-30,21%	-15,96%	-20,97%	13.540	22.890	-40,85%
Otros Pesados	416	564	466	606	-26,24%	-10,73%	-31,35%	7.877	14.209	-44,56%
Total	23.364	37.493	19.891	24.528	-37,68%	17,46%	-4,75%	515.008	610.780	-15,68%
Prom. diario	1.230	1.785	1.105	1.363				2.111	2.473	
Dias habiles	19	21	18	18				244	247	

Patentamientos por origen	
	dic/09 Ac. 09
Importados	0 289.505
Nacionales	0 202.140



■ Importados ■ Nacionales

Patentamientos Mensuales

	ene	feb	mar	abr	may	jun	jul	ago	sep	oct	nov	dic
2009	73.927	39.075	41.303	40.539	40.147	44.110	46.633	42.434	46.021	39.963	37.493	23.364
2008	85.811	46.476	44.277	56.149	56.809	49.082	58.414	51.110	56.197	51.036	35.528	19.891
Var% 09-08	-13,85%	-15,92%	-6,72%	-27,80%	-29,33%	-10,13%	-20,17%	-16,98%	-18,11%	-21,70%	5,53%	17,46%
2007	82.552	38.841	47.379	41.626	47.231	42.139	50.182	54.285	48.857	49.497	40.640	24.528
2006	65.984	32.425	40.400	34.249	38.284	36.566	36.948	39.123	39.641	36.009	33.252	17.725

Patentamientos por Marcas - Totales

Marca	dic/09(a)	Part %	dic/08(c)	Part %	nov/09(e)	Part %	Var a-c	Var a-e	ene - dic	Part %	ene - dic	Part %	2009-2008
Volkswagen	7.283	31,74%	4.158	21,41%	9.175	24,85%	75,16%	-20,62%	103.547	20,42%	112.014	18,78%	-7,56%
Chevrolet	3.351	14,60%	3.287	16,92%	5.349	14,49%	1,95%	-37,35%	71.622	14,12%	85.617	14,35%	-16,35%
Ford	2.359	10,28%	2.216	11,41%	4.352	11,79%	6,45%	-45,80%	67.283	13,27%	74.223	12,44%	-9,35%
Renault	1.947	8,48%	1.933	9,95%	4.172	11,30%	0,72%	-53,33%	61.271	12,08%	69.298	11,62%	-11,58%
Fiat	1.920	8,37%	2.217	11,41%	3.552	9,62%	-13,40%	-45,95%	49.674	9,80%	63.611	10,66%	-21,91%
Peugeot	1.810	7,89%	1.945	10,01%	3.140	8,50%	-6,94%	-42,36%	45.748	9,02%	59.130	9,91%	-22,63%
Toyota	898	3,91%	922	4,75%	1.672	4,53%	-2,60%	-46,29%	29.120	5,74%	30.523	5,12%	-4,60%
Citroen	745	3,25%	779	4,01%	1.459	3,95%	-4,36%	-48,94%	20.325	4,01%	22.214	3,72%	-8,50%
Honda	493	2,15%	267	1,37%	986	2,67%	84,64%	-50,00%	15.085	2,97%	18.722	3,14%	-19,43%
Mercedes Benz	373	1,63%	408	2,10%	744	2,01%	-8,58%	-49,87%	10.396	2,05%	14.554	2,44%	-28,57%
Suzuki	369	1,61%	383	1,97%	553	1,50%	-3,66%	-33,27%	6.775	1,34%	9.335	1,56%	-27,42%
Nissan	200	0,87%	118	0,61%	321	0,87%	69,49%	-37,69%	4.072	0,80%	6.234	1,05%	-34,68%
Hyundai	160	0,70%	110	0,57%	228	0,62%	45,45%	-29,82%	3.499	0,69%	4.894	0,82%	-28,50%
Audi	88	0,38%	51	0,26%	128	0,35%	72,55%	-31,25%	2.678	0,53%	3.261	0,55%	-17,88%
Iveco	202	0,88%	103	0,53%	213	0,58%	96,12%	-5,16%	2.410	0,48%	4.467	0,75%	-46,05%
BMW	75	0,33%	26	0,13%	119	0,32%	188,46%	-36,97%	2.187	0,43%	2.727	0,46%	-19,80%
Kia	100	0,44%	89	0,46%	186	0,50%	12,36%	-46,24%	2.187	0,43%	3.679	0,62%	-40,55%
Dodge	57	0,25%	35	0,18%	60	0,16%	62,86%	-5,00%	1.296	0,26%	1.029	0,17%	25,95%
Chery	68	0,30%	19	0,10%	76	0,21%	257,89%	-10,53%	1.263	0,25%	319	0,05%	295,92%
Chrysler	29	0,13%	25	0,13%	39	0,11%	16,00%	-25,64%	949	0,19%	1.632	0,27%	-41,85%
Scania	51	0,22%	48	0,25%	59	0,16%	6,25%	-13,56%	926	0,18%	1.629	0,27%	-43,16%
Jeep	70	0,31%	36	0,19%	56	0,15%	94,44%	25,00%	922	0,18%	1.572	0,26%	-41,35%
Mitsubishi	79	0,34%	26	0,13%	69	0,19%	203,85%	14,49%	774	0,15%	1.728	0,29%	-55,21%
Seat	35	0,15%	13	0,07%	59	0,16%	169,23%	-40,68%	630	0,12%	460	0,08%	36,96%
Agrale	26	0,11%	58	0,30%	32	0,09%	-55,17%	-18,75%	620	0,12%	680	0,11%	-8,82%
Volvo	51	0,22%	64	0,33%	36	0,10%	-20,31%	41,67%	582	0,11%	1.227	0,21%	-52,57%
Subaru	15	0,07%	12	0,06%	29	0,08%	25,00%	-48,28%	359	0,07%	555	0,09%	-35,32%
Mini	5	0,02%	8	0,04%	16	0,04%	-37,50%	-68,75%	357	0,07%	421	0,07%	-15,20%
Puma de Tat	33	0,14%	54	0,28%	11	0,03%	-38,89%	200,00%	183	0,04%	363	0,06%	-49,59%
Land Rover	25	0,11%	8	0,04%	20	0,05%	212,50%	25,00%	148	0,03%	207	0,03%	-28,50%
Porsche	6	0,03%	3	0,02%	4	0,01%	100,00%	50,00%	83	0,02%	186	0,03%	-55,38%
Materfer	19	0,08%		0,00%		0,00%	N/D	N/D	57	0,01%	1	0,00%	5600,00%
Alfa Romeo	1	0,00%	1	0,01%	8	0,02%	0,00%	-87,50%	38	0,01%	28	0,00%	35,71%
Mack	2	0,01%		0,00%	2	0,01%	N/D	0,00%	13	0,00%		0,00%	N/D
Jaguar	2	0,01%	2	0,01%		0,00%	0,00%	N/D	6	0,00%	4	0,00%	50,00%
Ferrari		0,00%		0,00%	1	0,00%	N/D	-100,00%	5	0,00%	5	0,00%	0,00%
Lexus		0,00%	1	0,01%		0,00%	-100,00%	N/D	1	0,00%	2	0,00%	-50,00%
Hummer		0,00%		0,00%		0,00%	N/D	N/D		0,00%	2	0,00%	-100,00%
Lamborghini		0,00%		0,00%		0,00%	N/D	N/D		0,00%	1	0,00%	-100,00%
Total	22.947		19.425		36.926				507.091		596.554		

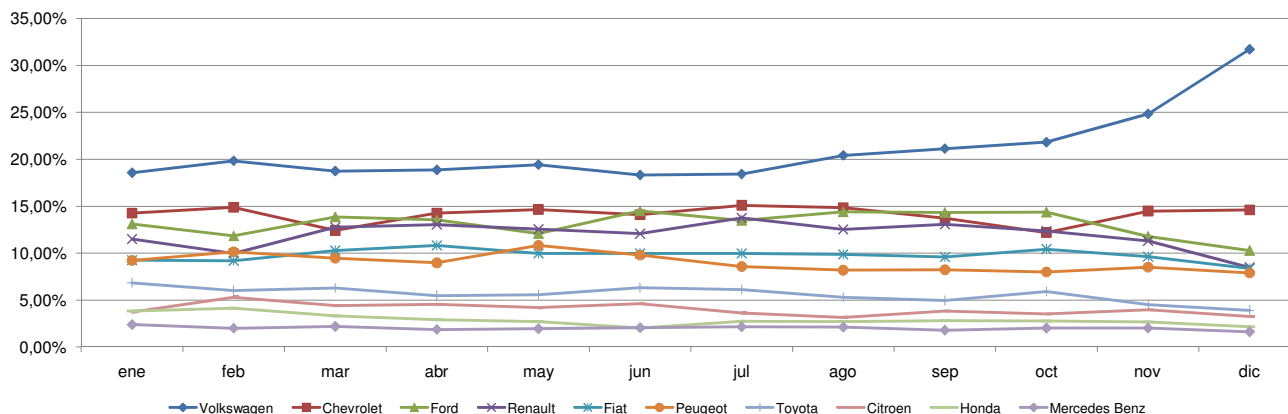


Patentamientos por Marcas - Mercado Total

Patentamientos por Marcas - Autos + Livianos								2009	2009	2008	2008	Var	
Marca	dic/09(a)	Part %	dic/08(c)	Part %	nov/09(e)	Part %	Var a-c	Var a-e	ene - dic	Part %	ene - dic	Part %	2009-2008
Volkswagen	7.204	32,41%	4.074	21,94%	9.082	25,30%	76,83%	-20,68%	102.329	20,73%	109.287	19,05%	-6,37%
Chevrolet	3.351	15,07%	3.287	17,70%	5.349	14,90%	1,95%	-37,35%	71.622	14,51%	85.617	14,92%	-16,35%
Ford	2.226	10,01%	2.005	10,80%	4.123	11,48%	11,02%	-46,01%	64.721	13,11%	69.685	12,15%	-7,12%
Renault	1.906	8,57%	1.919	10,33%	4.132	11,51%	-0,68%	-53,87%	60.922	12,34%	68.662	11,97%	-11,27%
Fiat	1.920	8,64%	2.217	11,94%	3.552	9,89%	-13,40%	-45,95%	49.674	10,06%	63.611	11,09%	-21,91%
Peugeot	1.810	8,14%	1.945	10,47%	3.140	8,75%	-6,94%	-42,36%	45.747	9,27%	59.130	10,31%	-22,63%
Toyota	898	4,04%	922	4,96%	1.672	4,66%	-2,60%	-46,29%	29.120	5,90%	30.523	5,32%	-4,60%
Citroen	745	3,35%	779	4,19%	1.459	4,06%	-4,36%	-48,94%	20.325	4,12%	22.214	3,87%	-8,50%
Honda	493	2,22%	267	1,44%	986	2,75%	84,64%	-50,00%	15.085	3,06%	18.722	3,26%	-19,43%
Suzuki	369	1,66%	383	2,06%	553	1,54%	-3,66%	-33,27%	6.775	1,37%	9.335	1,63%	-27,42%
Mercedes Benz	181	0,81%	152	0,82%	359	1,00%	19,08%	-49,58%	4.856	0,98%	6.383	1,11%	-23,92%
Nissan	200	0,90%	118	0,64%	321	0,89%	69,49%	-37,69%	4.072	0,82%	6.234	1,09%	-34,68%
Hyundai	144	0,65%	107	0,58%	212	0,59%	34,58%	-32,08%	3.317	0,67%	4.663	0,81%	-28,87%
Audi	88	0,40%	51	0,27%	128	0,36%	72,55%	-31,25%	2.678	0,54%	3.261	0,57%	-17,88%
BMW	75	0,34%	26	0,14%	119	0,33%	188,46%	-36,97%	2.187	0,44%	2.727	0,48%	-19,80%
Kia	100	0,45%	89	0,48%	186	0,52%	12,36%	-46,24%	2.187	0,44%	3.679	0,64%	-40,55%
Dodge	57	0,26%	35	0,19%	60	0,17%	62,86%	-5,00%	1.296	0,26%	1.029	0,18%	25,95%
Chery	68	0,31%	19	0,10%	76	0,21%	257,89%	-10,53%	1.263	0,26%	319	0,06%	295,92%
Chrysler	29	0,13%	25	0,13%	39	0,11%	16,00%	-25,64%	949	0,19%	1.632	0,28%	-41,85%
Jeep	70	0,31%	36	0,19%	56	0,16%	94,44%	25,00%	922	0,19%	1.572	0,27%	-41,35%
Iveco	97	0,44%	34	0,18%	74	0,21%	185,29%	31,08%	878	0,18%	1.347	0,23%	-34,82%
Mitsubishi	79	0,36%	26	0,14%	69	0,19%	203,85%	14,49%	774	0,16%	1.728	0,30%	-55,21%
Seat	35	0,16%	13	0,07%	59	0,16%	169,23%	-40,68%	630	0,13%	460	0,08%	36,96%
Subaru	15	0,07%	12	0,06%	29	0,08%	25,00%	-48,28%	359	0,07%	555	0,10%	-35,32%
Mini	5	0,02%	8	0,04%	16	0,04%	-37,50%	-68,75%	357	0,07%	421	0,07%	-15,20%
Volvo	32	0,14%	9	0,05%	18	0,05%	255,56%	77,78%	253	0,05%	449	0,08%	-43,65%
Land Rover	25	0,11%	8	0,04%	20	0,06%	212,50%	25,00%	148	0,03%	207	0,04%	-28,50%
Porsche	6	0,03%	3	0,02%	4	0,01%	100,00%	50,00%	83	0,02%	186	0,03%	-55,38%
Alfa Romeo	1	0,00%	1	0,01%	8	0,02%	0,00%	-87,50%	38	0,01%	28	0,00%	35,71%
Jaguar	2	0,01%	2	0,01%	0	0,00%	0,00%	N/D	6	0,00%	4	0,00%	50,00%
Ferrari		0,00%		0,00%	1	0,00%	N/D	-100,00%	5	0,00%	5	0,00%	0,00%
Agrale		0,00%		0,00%		0,00%	N/D	N/D	2	0,00%	1	0,00%	100,00%
Lexus		0,00%	1	0,01%		0,00%	-100,00%	N/D	1	0,00%	2	0,00%	-50,00%
Hummer		0,00%		0,00%		0,00%	N/D	N/D		0,00%	2	0,00%	-100,00%
Lamborghini		0,00%		0,00%		0,00%	N/D	N/D		0,00%	1	0,00%	-100,00%
Total	22.231		18.573		35.902				493.581		573.681		

Patentamientos por Marcas - Camiones + Buses								2009	2009	2008	2008	Var	
Marca	dic/09(a)	Part %	dic/08(c)	Part %	nov/09(e)	Part %	Var a-c	Var a-e	ene - dic	Part %	ene - dic	Part %	2009-2008
Mercedes Benz	192	26,82%	256	30,05%	385	37,60%	-25,00%	-50,13%	5.540	41,01%	8.171	35,72%	-32,20%
Ford	133	18,58%	211	24,77%	229	22,36%	-36,97%	-41,92%	2.562	18,96%	4.538	19,84%	-43,54%
Iveco	105	14,66%	69	8,10%	139	13,57%	52,17%	-24,46%	1.532	11,34%	3.120	13,64%	-50,90%
Volkswagen	79	11,03%	84	9,86%	93	9,08%	-5,95%	-15,05%	1.218	9,02%	2.727	11,92%	-55,34%
Scania	51	7,12%	48	5,63%	59	5,76%	6,25%	-13,56%	926	6,85%	1.629	7,12%	-43,16%
Agrale	26	3,63%	58	6,81%	32	3,13%	-55,17%	-18,75%	618	4,57%	679	2,97%	-8,98%
Renault	41	5,73%	14	1,64%	40	3,91%	192,86%	2,50%	349	2,58%	636	2,78%	-45,13%
Volvo	19	2,65%	55	6,46%	18	1,76%	-65,45%	5,56%	329	2,44%	778	3,40%	-57,71%
Puma de Tat	33	4,61%	54	6,34%	11	1,07%	-38,89%	200,00%	183	1,35%	363	1,59%	-49,59%
Hyundai	16	2,23%	3	0,35%	16	1,56%	433,33%	0,00%	182	1,35%	231	1,01%	-21,21%
Materfer	19	2,65%		0,00%		0,00%	N/D	N/D	57	0,42%	1	0,00%	5600,00%
Mack	2	0,28%		0,00%	2	0,20%	N/D	0,00%	13	0,10%		0,00%	N/D
Peugeot		0,00%		0,00%		0,00%	N/D	N/D	1	0,01%		0,00%	N/D
Total	716		852		1.024				13.510		22.873		

Participacion por Marcas - Evolucion Mensual

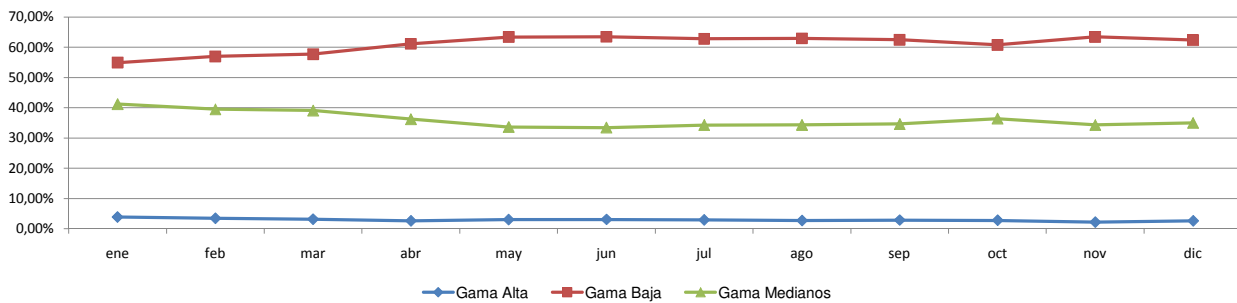




Patentamientos por Ranking de Automoviles - Mercado Total

Rank.	Ranking Por Modelos - Automoviles										
	Modelo	dic/09 (a)	dic/08 (b)	nov/09 (c)	Var a-b	Var a-c	Ac. 09	Part %	Ac. 08	Part %	Var 09-08
1	Chevrolet CORSA	1.193	1.569	1.684	-23,96%	-29,16%	27.595	6,84%	35.273	7,73%	-21,77%
2	Peugeot 207 COMPACT	881	656	1.624	34,30%	-45,75%	23.932	5,94%	3.979	0,87%	501,46%
3	Volkswagen GOL	1.917	1.477	2.654	29,79%	-27,77%	21.254	5,27%	42.000	9,20%	-49,40%
4	Volkswagen GOL TREND	852	502	1.271	69,72%	-32,97%	20.547	5,10%	3.718	0,81%	452,64%
5	Ford ECOSPORT	594	454	1.124	30,84%	-47,15%	17.489	4,34%	17.566	3,85%	-0,44%
6	Volkswagen SURAN	1.603	582	1.652	175,43%	-2,97%	17.147	4,25%	15.964	3,50%	7,41%
7	Renault CLIO	245	569	562	-56,94%	-56,41%	13.319	3,30%	18.106	3,97%	-26,44%
8	Volkswagen BORA	782	349	997	124,07%	-21,56%	11.352	2,82%	12.705	2,78%	-10,65%
9	Ford KA	376	355	629	5,92%	-40,22%	11.097	2,75%	9.777	2,14%	13,50%
10	Fiat SIENA	386	627	785	-38,44%	-50,83%	11.032	2,74%	14.121	3,09%	-21,88%
11	Ford FIESTA	376	388	653	-3,09%	-42,42%	10.938	2,71%	14.012	3,07%	-21,94%
12	Renault SANDERO	428	167	953	156,29%	-55,09%	10.881	2,70%	4.265	0,93%	155,12%
13	Volkswagen FOX/CROSSFOX	985	275	956	258,18%	3,03%	9.175	2,28%	12.819	2,81%	-28,43%
14	Fiat PALIO	380	362	604	4,97%	-37,09%	9.092	2,26%	11.916	2,61%	-23,70%
15	Volkswagen VOYAGE	450	56	672	703,57%	-33,04%	8.854	2,20%	59	0,01%	14906,78%
16	Honda FIT	259	94	577	175,53%	-55,11%	8.404	2,08%	7.658	1,68%	9,74%
17	Citroen C4	249	333	498	-25,23%	-50,00%	8.351	2,07%	8.510	1,86%	-1,87%
18	Peugeot 307	227	481	465	-52,81%	-51,18%	8.112	2,01%	16.098	3,53%	-49,61%
19	Fiat UNO	258	380	477	-32,11%	-45,91%	7.893	1,96%	11.735	2,57%	-32,74%
20	Toyota COROLLA	251	187	492	34,22%	-48,98%	7.472	1,85%	7.432	1,63%	0,54%
21	Ford FOCUS	212	192	532	10,42%	-60,15%	7.252	1,80%	9.305	2,04%	-22,06%
22	Chevrolet ASTRA	238	287	356	-17,07%	-33,15%	7.054	1,75%	11.177	2,45%	-36,89%
23	Chevrolet MERIVA	361	258	420	39,92%	-14,05%	6.229	1,55%	7.514	1,65%	-17,10%
24	Chevrolet CORSA II	267	335	334	-20,30%	-20,06%	5.920	1,47%	9.424	2,06%	-37,18%
25	Ford FOCUS II	177	66	381	168,18%	-53,54%	5.599	1,39%	623	0,14%	798,72%
26	Renault KANGOO	229	220	484	4,09%	-52,69%	5.452	1,35%	7.873	1,72%	-30,75%
27	Chevrolet AVEO	316	46	591	586,96%	-46,53%	5.390	1,34%	49	0,01%	10900,00%
28	Renault SYMBOL	219	10	546	2090,00%	-59,89%	5.382	1,33%	10	0,00%	53720,00%
29	Fiat PALIO WEEKEND	220	242	303	-9,09%	-27,39%	5.053	1,25%	4.282	0,94%	18,01%
30	Renault LOGAN	195	166	447	17,47%	-56,38%	4.971	1,23%	4.780	1,05%	4,00%
31	Fiat PUNTO	171	179	473	-4,47%	-63,85%	4.917	1,22%	7.521	1,65%	-34,62%
32	Volkswagen VENTO	226	102	359	121,57%	-37,05%	4.705	1,17%	5.267	1,15%	-10,67%
33	Renault MEGANE II	96	114	183	-15,79%	-47,54%	4.619	1,15%	5.220	1,14%	-11,51%
34	Suzuki FUN	350	313	518	11,82%	-32,43%	4.614	1,14%	7.138	1,56%	-35,36%
35	Citroen C3	186	164	335	13,41%	-44,48%	4.405	1,09%	4.575	1,00%	-3,72%
36	Chevrolet CORSA SW	130	167	202	-22,16%	-35,64%	4.031	1,00%	4.983	1,09%	-19,10%
37	Peugeot 206	207	266	350	-22,18%	-40,86%	3.959	0,98%	26.255	5,75%	-84,92%
38	Nissan TIIDA	163	71	257	129,58%	-36,58%	3.123	0,77%	3.029	0,66%	3,10%
39	Honda CIVIC	44	79	123	-44,30%	-64,23%	2.873	0,71%	5.717	1,25%	-49,75%
40	Renault MEGANE	7	188	10	-96,28%	-30,00%	2.858	0,71%	10.882	2,38%	-73,74%
41	Chevrolet SPARK	70	191	94	-63,35%	-25,53%	2.610	0,65%	797	0,17%	227,48%
42	Chevrolet VECTRA	103	85	180	21,18%	-42,78%	2.583	0,64%	3.395	0,74%	-23,92%
43	Volkswagen GOL COUNTRY	110	341	151	-67,74%	-27,15%	2.292	0,57%	4.225	0,93%	-45,75%
44	Citroen PICASSO	77	68	200	13,24%	-61,50%	2.186	0,54%	2.382	0,52%	-8,23%
45	Fiat IDEA	81	103	100	-21,36%	-19,00%	1.989	0,49%	4.296	0,94%	-53,70%
46	Chevrolet AGILE	309		735	N/D	-57,96%	1.573	0,39%		0,00%	N/D
47	Peugeot PARTNER	152	79	136	92,41%	11,76%	1.550	0,38%	2.772	0,61%	-44,08%
48	Citroen BERLINGO	71	73	84	-2,74%	-15,48%	1.538	0,38%	2.663	0,58%	-42,25%
49	Fiat LINEA	53		144	N/D	-63,19%	1.499	0,37%		0,00%	N/D
50	Renault SCENIC	30	70	94	-57,14%	-68,09%	1.451	0,36%	2.312	0,51%	-37,24%
51	Otros	950	796	1.326	19,35%	-28,36%	21.556	5,35%	30.263	6,63%	-28,77%
Total		18.712	15.134	29.777			403.169	1	456.442		

Autos - Participacion por Segmento





Patentamientos por Ranking de Livianos y Pesados - Mercado Total

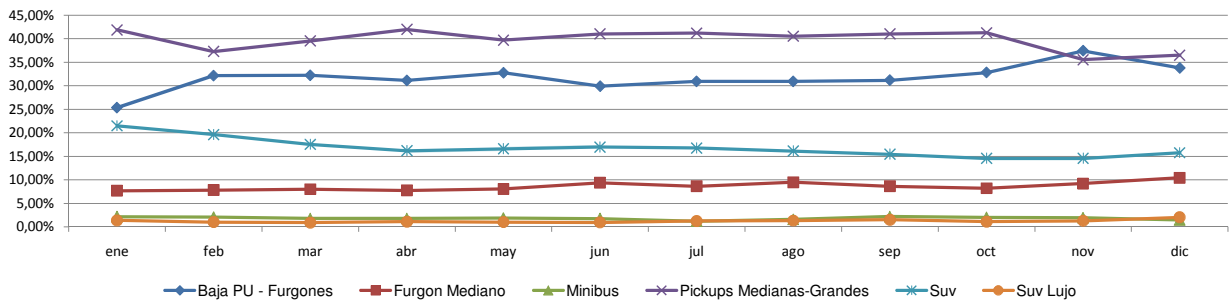
Rank.	Comercial Liviano										
	Modelo	dic/09 (a)	dic/08 (b)	nov/09 (c)	Var a-b	Var a-c	Ac. 09	Part %	Ac. 08	Part %	Var 09-08
1	Toyota HILUX	557	571	1.026	-2,45%	-45,71%	18.203	20,13%	18.543	15,82%	-1,83%
2	Ford RANGER	352	461	633	-23,64%	-44,39%	9.609	10,63%	14.812	12,63%	-35,13%
3	Renault KANGOO FURGON	354	302	665	17,22%	-46,77%	8.587	9,50%	11.324	9,66%	-24,17%
4	Chevrolet S-10	183	180	371	1,67%	-50,67%	5.658	6,26%	8.785	7,49%	-35,59%
5	Peugeot PARTNER FURGON	257	287	430	-10,45%	-40,23%	5.361	5,93%	7.155	6,10%	-25,07%
6	Fiat FIORINO	220	218	371	0,92%	-40,70%	5.044	5,58%	6.292	5,37%	-19,83%
7	Citroen BERLINGO FURGON	122	128	260	-4,69%	-53,08%	3.015	3,33%	3.593	3,06%	-16,09%
8	Honda CRV	65	72	166	-9,72%	-60,84%	2.914	3,22%	4.779	4,08%	-39,02%
9	Volkswagen SAVEIRO	54	110	110	-50,91%	-50,91%	2.898	3,21%	3.906	3,33%	-25,81%
10	Mercedes Benz SPRINTER	114	99	224	15,15%	-49,11%	2.654	2,94%	3.721	3,17%	-28,68%
11	Renault MASTER	74	83	96	-10,84%	-22,92%	2.357	2,61%	2.887	2,46%	-18,36%
12	Toyota HILUX SW4	44	114	93	-61,40%	-52,69%	1.926	2,13%	2.404	2,05%	-19,88%
13	Ford F 100	79	46	82	71,74%	-3,66%	1.610	1,78%	2.145	1,83%	-24,94%
14	Fiat STRADA	63	7	127	800,00%	-50,39%	1.272	1,41%	769	0,66%	65,41%
15	Chery TIGGO	68	19	76	257,89%	-10,53%	1.263	1,40%	319	0,27%	295,92%
16	Suzuki GRAND VITARA	9	38	11	-76,32%	-18,18%	1.178	1,30%	1.082	0,92%	8,87%
17	Toyota RAV 4	31	27	52	14,81%	-40,38%	1.069	1,18%	704	0,60%	51,85%
18	Hyundai TUCSON	26	22	56	18,18%	-53,57%	945	1,05%	1.551	1,32%	-39,07%
19	Iveco DAILY	97	34	74	185,29%	31,08%	878	0,97%	1.347	1,15%	-34,82%
20	Chevrolet CAPTIVA	35	70	29	-50,00%	20,69%	792	0,88%	1.381	1,18%	-42,65%
21	Otros	715	551	1.173	29,76%	-39,05%	13.179	14,58%	19.740	16,84%	-33,24%
Total		3.519	3.439	6.125			90.412	1	117.239		

Rank.	Comercial Pesado										
	Modelo	dic/09 (a)	dic/08 (b)	nov/09 (c)	Var a-b	Var a-c	Ac. 09	Part %	Ac. 08	Part %	Var 09-08
1	Ford CARGO 1722 E	33	29	79	13,79%	-58,23%	829	6,14%	1.541	6,74%	-46,20%
2	Mercedes Benz BMO 384	29	66	82	-56,06%	-64,63%	824	6,10%	253	1,11%	225,69%
3	Iveco 170 E	49	29	58	68,97%	-15,52%	723	5,35%	1.244	5,44%	-41,88%
4	Mercedes Benz L-1624	15	15	28	0,00%	-46,43%	714	5,29%	965	4,22%	-26,01%
5	Ford F-4000	33	96	48	-65,63%	-31,25%	614	4,55%	1.062	4,64%	-42,18%
6	Mercedes Benz 1315	2	14	30	-85,71%	-93,33%	562	4,16%	706	3,09%	-20,40%
7	Mercedes Benz ATEGO 1725	10	17	27	-41,18%	-62,96%	414	3,06%	691	3,02%	-40,09%
8	Volkswagen 17220	18	26	34	-30,77%	-47,06%	378	2,80%	913	3,99%	-58,60%
9	Mercedes Benz OF 1418	1	19	8	-94,74%	-87,50%	362	2,68%	966	4,22%	-62,53%
10	Mercedes Benz 710	7	7	26	0,00%	-73,08%	336	2,49%	567	2,48%	-40,74%
11	Mercedes Benz O-500	66	36	44	83,33%	50,00%	325	2,41%	404	1,77%	-19,55%
12	Mercedes Benz LS 1634	6	19	18	-68,42%	-66,67%	321	2,38%	1.069	4,67%	-69,97%
13	Scania G340	14	13	19	7,69%	-26,32%	315	2,33%	390	1,71%	-19,23%
14	Mercedes Benz OF 1722	6	3	9	100,00%	-33,33%	298	2,21%	409	1,79%	-27,14%
15	Iveco 450 E	25	5	25	400,00%	0,00%	294	2,18%	718	3,14%	-59,05%
16	Agrale MT12	3	27	13	-88,89%	-76,92%	285	2,11%	341	1,49%	-16,42%
17	Ford CARGO 1832 E	10	15	28	-33,33%	-64,29%	260	1,92%	629	2,75%	-58,66%
18	Mercedes Benz L-1318	2	6	24	-66,67%	-91,67%	253	1,87%	238	1,04%	6,30%
19	Renault PREMIUM	32	12	28	166,67%	14,29%	247	1,83%	393	1,72%	-37,15%
20	Mercedes Benz L1634	15	8	14	87,50%	7,14%	237	1,75%	440	1,92%	-46,14%
21	Otros	340	390	382	-12,82%	-10,99%	4.918	36,41%	8.934	39,06%	-44,95%
Total		716	852	1.024			13.509	1	22.873		

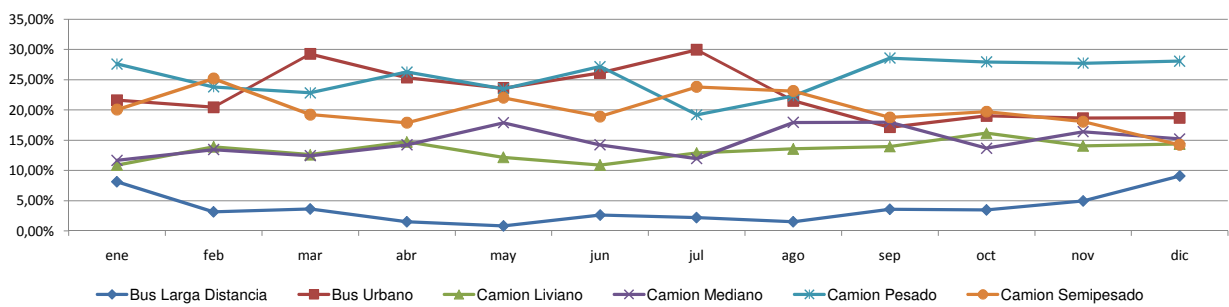


Patentamientos por Ranking de Livianos y Pesados - Mercado Total

Comercial Liviano



Comercial Pesado





Patentamientos por Provincias y Tipos -

Distrito	Automovil+Comercial Liviano							Comercial Pesado+Otros Pesados							Mercado Total					
	dic/09 (a)	dic/08 (b)	nov/09 (c)	Var a-b	Var a-c	Ac. 09	Ac. 08	Var 09-08	dic/09 (a)	dic/08 (b)	nov/09 (c)	Var a-b	Var a-c	Ac. 09	Ac. 08	Var 09-08	Ac. 09	Ac. 08	Var 09-08	Part %
CAPITAL FEDERAL	5.894	4.706	7.918	25,24%	-25,56%	90.924	106.727	-14,81%	338	400	436	-15,50%	-22,48%	5.198	8.701	-40,26%	96.122	115.428	-16,73%	18,66%
GRAN BUENOS AIRES	4.647	3.435	7.071	35,28%	-34,28%	88.366	93.664	-5,66%	72	71	150	1,41%	-52,00%	2.055	3.344	-38,55%	90.421	97.008	-6,79%	17,56%
BUENOS AIRES	2.929	2.848	5.288	2,84%	-44,61%	74.705	88.126	-15,23%	147	193	186	-23,83%	-20,97%	2.515	4.974	-49,44%	77.221	93.100	-17,06%	14,99%
CORDOBA	1.641	1.385	3.290	18,48%	-50,12%	51.807	60.092	-13,79%	92	82	129	12,20%	-28,68%	1.852	3.600	-48,56%	53.659	63.692	-15,75%	10,42%
SANTA FE	1.391	1.216	2.856	14,39%	-51,30%	40.976	51.409	-20,29%	73	115	104	-36,52%	-29,81%	1.697	3.756	-54,82%	42.673	55.165	-22,64%	8,29%
MENDOZA	682	524	1.149	30,15%	-40,64%	17.721	20.695	-14,37%	58	39	67	48,72%	-13,43%	1.110	1.521	-27,02%	18.831	22.216	-15,24%	3,66%
ENTRE RIOS	379	309	759	22,65%	-50,07%	11.243	13.712	-18,01%	33	33	67	0,00%	-50,75%	747	1.184	-36,91%	11.990	14.896	-19,51%	2,33%
CHUBUT	506	510	740	-0,78%	-31,62%	11.368	13.921	-18,34%	25	31	57	-19,35%	-56,14%	590	1.086	-45,67%	11.958	15.007	-20,32%	2,32%
SALTA	493	311	658	58,52%	-25,08%	9.885	10.954	-9,76%	30	28	33	7,14%	-9,09%	698	1.029	-32,17%	10.583	11.983	-11,68%	2,05%
NEUQUEN	457	390	610	17,18%	-25,08%	9.767	13.691	-28,66%	19	46	43	-58,70%	-55,81%	500	858	-41,72%	10.267	14.549	-29,43%	1,99%
TUCUMAN	364	237	775	53,59%	-53,03%	9.686	11.331	-14,52%	24	14	37	71,43%	-35,14%	569	789	-27,88%	10.255	12.120	-15,39%	1,99%
CHACO	264	341	424	-22,58%	-37,74%	9.205	10.807	-14,82%	30	95	24	-68,42%	25,00%	556	1.002	-44,51%	9.761	11.809	-17,34%	1,90%
CORRIENTES	304	227	529	33,92%	-42,53%	8.623	9.752	-11,58%	38	21	53	80,95%	-28,30%	751	1.258	-40,30%	9.374	11.010	-14,86%	1,82%
SANTA CRUZ	415	406	529	2,22%	-21,55%	8.301	9.574	-13,30%	15	25	22	-40,00%	-31,82%	325	507	-35,90%	8.626	10.081	-14,43%	1,67%
RIO NEGRO	287	336	547	-14,58%	-47,53%	7.063	8.685	-18,68%	12	13	5	-7,69%	140,00%	176	254	-30,71%	7.239	8.939	-19,02%	1,41%
JUJUY	182	123	302	47,97%	-39,74%	5.216	5.543	-5,90%	44	47	53	-6,38%	-16,98%	564	822	-31,39%	5.780	6.365	-9,19%	1,12%
MISIONES	174	122	334	42,62%	-47,90%	5.490	6.612	-16,97%	18	11	20	63,64%	-10,00%	245	401	-38,90%	5.735	7.013	-18,22%	1,11%
SAN JUAN	188	109	305	72,48%	-38,36%	5.169	5.489	-5,83%	18	19	16	-5,26%	12,50%	241	435	-44,60%	5.410	5.924	-8,68%	1,05%
LA PAMPA	152	214	330	-28,97%	-53,94%	5.186	6.785	-23,57%	6	10	5	-40,00%	20,00%	170	329	-48,33%	5.356	7.114	-24,71%	1,04%
TIERRA DEL FUEGO	352	363	444	-3,03%	-20,72%	4.579	6.842	-33,08%	9	11	17	-18,18%	-47,06%	143	360	-60,28%	4.722	7.202	-34,43%	0,92%
SANTIAGO DEL ESTERO	120	112	199	7,14%	-39,70%	4.341	4.841	-10,33%	18	5	17	260,00%	5,88%	234	328	-28,66%	4.575	5.169	-11,49%	0,89%
SAN LUIS	173	134	286	29,10%	-39,51%	4.046	4.161	-2,76%	4	5	8	-20,00%	-50,00%	122	135	-9,63%	4.168	4.296	-2,98%	0,81%
FORMOSA	90	74	209	21,62%	-56,94%	3.823	3.840	-0,44%	6	2	28	200,00%	-78,57%	189	201	-5,97%	4.012	4.041	-0,72%	0,78%
CATAMARCA	60	80	169	-25,00%	-64,50%	3.244	3.899	-16,80%	6	2	6	-100,00%	-100,00%	86	126	-31,75%	3.330	4.025	-17,27%	0,65%
LA RIOJA	88	61	182	44,26%	-51,65%	2.857	2.529	12,97%	3		7	N/D	-57,14%	84	99	-15,15%	2.941	2.628	11,91%	0,57%



Patentamientos por Provincias y Tipos -

