



Patentamientos por Marcas - Mercado Total

	jun/10(a)	may/10(b)	jun/09(c)	jun/08(d)	Var a-b	Var a-c	Var a-d	Ac. 10	Ac. 09	Var 10-09
Automovil	40.205	38.616	34.019	36.645	4,11%	18,18%	9,71%	260.101	217.134	19,79%
Comercial Liviano	10.224	10.113	8.223	9.474	1,10%	24,33%	7,92%	61.857	50.434	22,65%
Comercial Pesado	1.355	1.315	1.142	1.852	3,04%	18,65%	-26,84%	8.182	7.104	15,17%
Otros Pesados	837	776	721	1.111	7,86%	16,09%	-24,66%	4.759	4.418	7,72%
Total	52.621	50.820	44.105	49.082	3,54%	19,31%	7,21%	334.899	279.090	20,00%
Prom. diario	2.506	2.675	2.100	2.454				2.745	2.326	
Dias habiles	21	19	21	20				122	120	

Patentamientos por origen		
	10-Jun	Ac. 10
Importados	0	174.751
Nacionales	0	107.527



■ Importados ■ Nacionales

Patentamientos Mensuales

	ene	feb	mar	abr	may	jun	jul	ago	sep	oct	nov	dic
2010	78.464	44.760	57.287	50.947	50.820	52.621						
2009	73.927	39.075	41.301	40.535	40.147	44.105	46.633	42.434	46.021	39.963	37.493	23.282
Var% 10-09	6,14%	14,55%	38,71%	25,69%	26,58%	19,31%	-100,00%	-100,00%	-100,00%	-100,00%	-100,00%	-100,00%
2008	85.811	46.476	44.277	56.149	56.809	49.082	58.414	51.110	56.197	51.035	35.528	19.891
2007	82.552	38.841	47.379	41.626	47.231	42.139	50.181	54.285	48.857	49.497	40.640	24.527

Patentamientos por Marcas - Totales

Marca	jun/10(a)		jun/09(c)		may/10(e)		2010		2010		2009		2009		Var
	Part %	Part %	Part %	Part %	Part %	Part %	ene - jun	Part %	ene - jun	Part %	ene - jun	Part %			
Volkswagen	10.705	20,64%	7.947	18,30%	10.969	21,89%	34,70%	-2,41%	66.533	20,13%	51.902	18,87%	28,19%		
Chevrolet	7.988	15,40%	6.112	14,07%	7.433	14,83%	30,69%	7,47%	51.347	15,53%	38.743	14,08%	32,53%		
Ford	5.593	10,78%	6.288	14,48%	5.655	11,29%	-11,05%	-1,10%	41.049	12,42%	36.189	13,15%	13,43%		
Renault	5.804	11,19%	5.236	12,05%	6.250	12,47%	10,85%	-7,14%	37.522	11,35%	32.789	11,92%	14,43%		
Fiat	5.415	10,44%	4.326	9,96%	5.460	10,90%	25,17%	-0,82%	35.523	10,75%	27.037	9,83%	31,39%		
Peugeot	4.561	8,79%	4.250	9,78%	4.063	8,11%	7,32%	12,26%	26.457	8,00%	26.549	9,65%	-0,35%		
Toyota	2.534	4,89%	2.734	6,29%	2.545	5,08%	-7,32%	-0,43%	17.560	5,31%	16.954	6,16%	3,57%		
Citroen	2.471	4,76%	2.001	4,61%	1.344	2,68%	23,49%	83,85%	11.779	3,56%	12.018	4,37%	-1,99%		
Honda	1.593	3,07%	883	2,03%	1.428	2,85%	80,41%	11,55%	10.711	3,24%	8.850	3,22%	21,03%		
Mercedes Benz	1.048	2,02%	890	2,05%	966	1,93%	17,75%	8,49%	6.447	1,95%	5.798	2,11%	11,19%		
Suzuki	475	0,92%	611	1,41%	476	0,95%	-22,26%	-0,21%	4.283	1,30%	3.467	1,26%	23,54%		
Nissan	802	1,55%	285	0,66%	665	1,33%	181,40%	20,60%	4.209	1,27%	2.173	0,79%	93,70%		
Hyundai	389	0,75%	264	0,61%	585	1,17%	47,35%	-33,50%	2.679	0,81%	1.949	0,71%	37,46%		
Audi	367	0,71%	214	0,49%	364	0,73%	71,50%	0,82%	2.297	0,69%	1.676	0,61%	37,05%		
BMW	306	0,59%	165	0,38%	332	0,66%	85,45%	-7,83%	2.036	0,62%	1.208	0,44%	68,54%		
Dodge	287	0,55%	76	0,17%	200	0,40%	277,63%	43,50%	1.579	0,48%	716	0,26%	120,53%		
Iveco	329	0,63%	185	0,43%	290	0,58%	77,84%	13,45%	1.519	0,46%	1.133	0,41%	34,07%		
Kia	218	0,42%	172	0,40%	264	0,53%	26,74%	-17,42%	1.411	0,43%	1.146	0,42%	23,12%		
Chery	115	0,22%	163	0,38%	100	0,20%	-29,45%	15,00%	970	0,29%	630	0,23%	53,97%		
Scania	134	0,26%	67	0,15%	115	0,23%	100,00%	16,52%	647	0,20%	598	0,22%	8,19%		
Mitsubishi	118	0,23%	62	0,14%	70	0,14%	90,32%	68,57%	635	0,19%	396	0,14%	60,35%		
Jeep	68	0,13%	87	0,20%	69	0,14%	-21,84%	-1,45%	567	0,17%	584	0,21%	-2,91%		
Agrale	75	0,14%	41	0,09%	51	0,10%	82,93%	47,06%	420	0,13%	332	0,12%	26,51%		
Chrysler	100	0,19%	109	0,25%	44	0,09%	-8,26%	127,27%	360	0,11%	572	0,21%	-37,06%		
Randon	61	0,12%	39	0,09%	58	0,12%	56,41%	5,17%	328	0,10%	304	0,11%	7,89%		
Volvo	61	0,12%	41	0,09%	44	0,09%	48,78%	38,64%	318	0,10%	349	0,13%	-8,88%		
Subaru	45	0,09%	33	0,08%	82	0,16%	36,36%	-45,12%	316	0,10%	187	0,07%	68,98%		
Mini	53	0,10%	31	0,07%	65	0,13%	70,97%	-18,46%	284	0,09%	193	0,07%	47,15%		
Seat	70	0,13%	42	0,10%	48	0,10%	66,67%	45,83%	253	0,08%	270	0,10%	-6,30%		
Puma de Tat	8	0,02%	46	0,11%	23	0,05%	-82,61%	-65,22%	172	0,05%	110	0,04%	56,36%		
Alfa Romeo	28	0,05%	3	0,01%	28	0,06%	833,33%	0,00%	120	0,04%	3	0,00%	3900,00%		
MONTENEGRO	24	0,05%	19	0,04%	12	0,02%	26,32%	100,00%	110	0,03%	118	0,04%	-6,78%		
Porsche	7	0,01%	4	0,01%	4	0,01%	75,00%	75,00%	51	0,02%	41	0,01%	24,39%		
Land Rover	4	0,01%	8	0,02%	3	0,01%	-50,00%	33,33%	38	0,01%	53	0,02%	-28,30%		
Montesur	6	0,01%	1	0,00%	4	0,01%	500,00%	50,00%	32	0,01%	19	0,01%	68,42%		
Mack	6	0,01%		0,00%		0,00%	N/D	N/D	11	0,00%	8	0,00%	37,50%		
Jaguar	1	0,00%	2	0,00%		0,00%	-50,00%	N/D	7	0,00%	3	0,00%	133,33%		
Ferrari		0,00%		0,00%	1	0,00%	N/D	-100,00%	4	0,00%	3	0,00%	33,33%		
Maserati		0,00%		0,00%		0,00%	N/D	N/D	1	0,00%		0,00%	N/D		
Materfer		0,00%	1	0,00%		0,00%	-100,00%	N/D	1	0,00%	27	0,01%	-96,30%		
Lexus		0,00%		0,00%		0,00%	N/D	N/D		0,00%	1	0,00%	-100,00%		
Total	51.869		43.438		50.110				330.586		275.098				

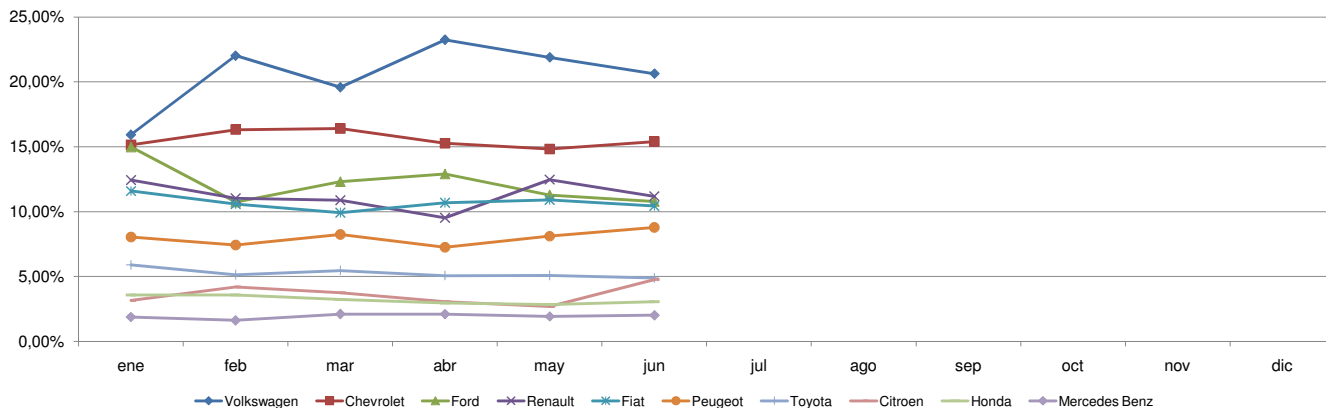


Patentamientos por Marcas - Mercado Total

Patentamientos por Marcas - Autos + Livianos									2010	2010	2009	2009	Var
Marca	jun/10(a)	Part %	jun/09(c)	Part %	may/10(e)	Part %	Var a-c	Var a-e	ene - jun	Part %	ene - jun	Part %	2010-2009
Volkswagen	10.552	20,92%	7.873	18,64%	10.872	22,31%	34,03%	-2,94%	65.752	20,42%	51.270	19,16%	28,25%
Chevrolet	7.988	15,84%	6.112	14,47%	7.433	15,25%	30,69%	7,47%	51.347	15,95%	38.743	14,48%	32,53%
Ford	5.372	10,65%	6.072	14,37%	5.435	11,15%	-11,53%	-1,16%	39.536	12,28%	34.954	13,06%	13,11%
Renault	5.789	11,48%	5.200	12,31%	6.229	12,78%	11,33%	-7,06%	37.349	11,60%	32.673	12,21%	14,31%
Fiat	5.415	10,74%	4.326	10,24%	5.460	11,21%	25,17%	-0,82%	35.523	11,03%	27.037	10,10%	31,39%
Peugeot	4.561	9,04%	4.250	10,06%	4.063	8,34%	7,32%	12,26%	26.457	8,22%	26.549	9,92%	-0,35%
Toyota	2.534	5,02%	2.734	6,47%	2.545	5,22%	-7,32%	-0,43%	17.560	5,45%	16.954	6,34%	3,57%
Citroen	2.471	4,90%	2.001	4,74%	1.344	2,76%	23,49%	83,85%	11.779	3,66%	12.018	4,49%	-1,99%
Honda	1.593	3,16%	883	2,09%	1.428	2,93%	80,41%	11,55%	10.711	3,33%	8.850	3,31%	21,03%
Suzuki	475	0,94%	611	1,45%	476	0,98%	-22,26%	-0,21%	4.283	1,33%	3.467	1,30%	23,54%
Nissan	802	1,59%	285	0,67%	665	1,36%	181,40%	20,60%	4.209	1,31%	2.173	0,81%	93,70%
Mercedes Benz	605	1,20%	393	0,93%	458	0,94%	53,94%	32,10%	3.362	1,04%	2.790	1,04%	20,50%
Hyundai	372	0,74%	253	0,60%	557	1,14%	47,04%	-33,21%	2.559	0,79%	1.865	0,70%	37,21%
Audi	367	0,73%	214	0,51%	364	0,75%	71,50%	0,82%	2.297	0,71%	1.676	0,63%	37,05%
BMW	306	0,61%	165	0,39%	332	0,68%	85,45%	-7,83%	2.036	0,63%	1.208	0,45%	68,54%
Dodge	287	0,57%	76	0,18%	200	0,41%	277,63%	43,50%	1.579	0,49%	716	0,27%	120,53%
Kia	218	0,43%	172	0,41%	264	0,54%	26,74%	-17,42%	1.411	0,44%	1.146	0,43%	23,12%
Chery	115	0,23%	163	0,39%	100	0,21%	-29,45%	15,00%	970	0,30%	630	0,24%	53,97%
Mitsubishi	118	0,23%	62	0,15%	70	0,14%	90,32%	68,57%	635	0,20%	396	0,15%	60,35%
Jeep	68	0,13%	87	0,21%	69	0,14%	-21,84%	-1,45%	567	0,18%	584	0,22%	-2,91%
Iveco	94	0,19%	58	0,14%	61	0,13%	62,07%	54,10%	456	0,14%	406	0,15%	12,32%
Chrysler	100	0,20%	109	0,26%	44	0,09%	-8,26%	127,27%	360	0,11%	572	0,21%	-37,06%
Subaru	45	0,09%	33	0,08%	82	0,17%	36,36%	-45,12%	316	0,10%	187	0,07%	68,98%
Mini	53	0,11%	31	0,07%	65	0,13%	70,97%	-18,46%	284	0,09%	193	0,07%	47,15%
Seat	70	0,14%	42	0,10%	48	0,10%	66,67%	45,83%	253	0,08%	270	0,10%	-6,30%
Volvo	18	0,04%	20	0,05%	26	0,05%	-10,00%	-30,77%	140	0,04%	135	0,05%	3,70%
Alfa Romeo	28	0,06%	3	0,01%	28	0,06%	833,33%	0,00%	120	0,04%	3	0,00%	3900,00%
Porsche	7	0,01%	4	0,01%	4	0,01%	75,00%	75,00%	51	0,02%	41	0,02%	24,39%
Land Rover	4	0,01%	8	0,02%	3	0,01%	-50,00%	33,33%	38	0,01%	53	0,02%	-28,30%
Jaguar	1	0,00%	2	0,00%		0,00%	-50,00%	N/D	7	0,00%	3	0,00%	133,33%
Ferrari		0,00%		0,00%	1	0,00%	N/D	-100,00%	4	0,00%	3	0,00%	33,33%
Maserati		0,00%		0,00%		0,00%	N/D	N/D	1	0,00%		0,00%	N/D
Agrale		0,00%		0,00%		0,00%	N/D	N/D		0,00%	1	0,00%	-100,00%
Lexus		0,00%		0,00%		0,00%	N/D	N/D		0,00%	1	0,00%	-100,00%
Total	50.428		42.242		48.726				321.952		267.567		

Patentamientos por Marcas - Camiones + Buses									2010	2010	2009	2009	Var
Marca	jun/10(a)	Part %	jun/09(c)	Part %	may/10(e)	Part %	Var a-c	Var a-e	ene - jun	Part %	ene - jun	Part %	2010-2009
Mercedes Benz	443	30,74%	497	41,56%	508	36,71%	-10,87%	-12,80%	3.085	35,73%	3.008	39,94%	2,56%
Ford	221	15,34%	216	18,06%	220	15,90%	2,31%	0,45%	1.513	17,52%	1.235	16,40%	22,51%
Iveco	235	16,31%	127	10,62%	229	16,55%	85,04%	2,62%	1.063	12,31%	727	9,65%	46,22%
Volkswagen	153	10,62%	74	6,19%	97	7,01%	106,76%	57,73%	781	9,05%	632	8,39%	23,58%
Scania	134	9,30%	67	5,60%	115	8,31%	100,00%	16,52%	647	7,49%	598	7,94%	8,19%
Agrale	75	5,20%	41	3,43%	51	3,68%	82,93%	47,06%	420	4,86%	331	4,40%	26,89%
Randon	61	4,23%	39	3,26%	58	4,19%	56,41%	5,17%	328	3,80%	304	4,04%	7,89%
Volvo	43	2,98%	21	1,76%	18	1,30%	104,76%	138,89%	178	2,06%	214	2,84%	-16,82%
Renault	15	1,04%	36	3,01%	21	1,52%	-58,33%	-28,57%	173	2,00%	116	1,54%	49,14%
Puma de Tat	8	0,56%	46	3,85%	23	1,66%	-82,61%	-65,22%	172	1,99%	110	1,46%	56,36%
Hyundai	17	1,18%	11	0,92%	28	2,02%	54,55%	-39,29%	120	1,39%	84	1,12%	42,86%
MONTENEGRO	24	1,67%	19	1,59%	12	0,87%	26,32%	100,00%	110	1,27%	118	1,57%	-6,78%
Montesur	6	0,42%	1	0,08%	4	0,29%	500,00%	50,00%	32	0,37%	19	0,25%	68,42%
Mack	6	0,42%		0,00%		0,00%	N/D	N/D	11	0,13%	8	0,11%	37,50%
Materfer		0,00%	1	0,08%		0,00%	-100,00%	N/D	1	0,01%	27	0,36%	-96,30%
Total	1.441		1.196		1.384				8.634		7.531		

Participacion por Marcas - Evolucion Mensual

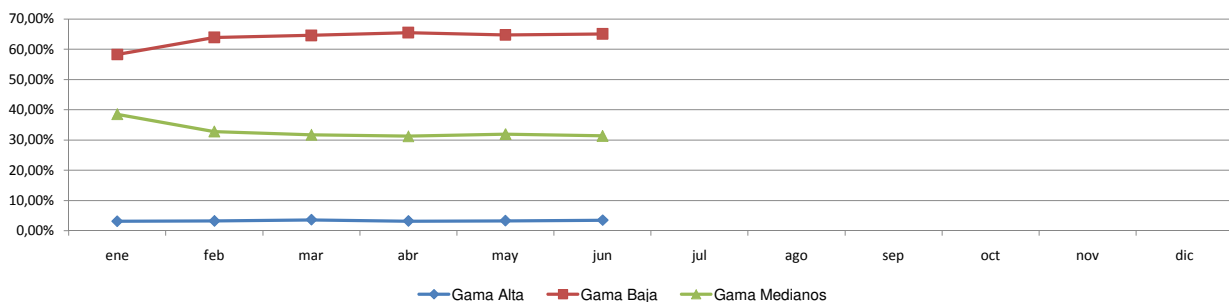




Patentamientos por Ranking de Automoviles - Mercado Total

Rank.	Ranking Por Modelos - Automoviles										
	Modelo	jun/10 (a)	jun/09 (b)	may/10 (c)	Var a-b	Var a-c	Ac. 10	Part %	Ac. 09	Part %	Var 10-09
1	Chevrolet CORSA	1.314	2.706	1.857	-51,44%	-29,24%	15.017	5,77%	14.909	6,87%	0,72%
2	Volkswagen GOL TREND	2.256	1.775	2.280	27,10%	-1,05%	14.735	5,67%	11.890	5,48%	23,93%
3	Peugeot 207 COMPACT	2.430	2.159	2.443	12,55%	-0,53%	14.325	5,51%	13.317	6,13%	7,57%
4	Volkswagen SURAN	1.682	1.243	2.250	35,32%	-25,24%	12.767	4,91%	8.298	3,82%	53,86%
5	Volkswagen GOL	1.804	1.408	1.559	28,13%	15,72%	11.353	4,36%	8.916	4,11%	27,33%
6	Renault SANDERO	1.354	735	2.136	84,22%	-36,61%	10.676	4,10%	4.426	2,04%	141,21%
7	Ford ECOSPORT	1.415	1.632	1.374	-13,30%	2,98%	10.286	3,95%	9.656	4,45%	6,52%
8	Ford KA	1.345	1.081	1.137	24,42%	18,29%	7.550	2,90%	5.684	2,62%	32,83%
9	Fiat SIENA	1.109	1.092	1.059	1,56%	4,72%	6.859	2,64%	5.992	2,76%	14,47%
10	Volkswagen VOYAGE	951	781	1.006	21,77%	-5,47%	6.501	2,50%	4.364	2,01%	48,97%
11	Chevrolet AGILE	996		893	N/D	11,53%	6.385	2,45%		0,00%	N/D
12	Volkswagen BORA	692	787	728	-12,07%	-4,95%	6.211	2,39%	5.741	2,64%	8,19%
13	Chevrolet AVEO	887	522	965	69,92%	-8,08%	6.068	2,33%	2.546	1,17%	138,33%
14	Ford FIESTA	489	1.122	540	-56,42%	-9,44%	5.625	2,16%	6.374	2,94%	-11,75%
15	Fiat PUNTO	838	423	783	98,11%	7,02%	5.485	2,11%	2.441	1,12%	124,70%
16	Ford FOCUS II	768	527	772	45,73%	-0,52%	5.413	2,08%	3.003	1,38%	80,25%
17	Renault CLIO	1.038	1.171	796	-11,36%	30,40%	5.361	2,06%	8.123	3,74%	-34,00%
18	Fiat PALIO	757	749	755	1,07%	0,26%	5.162	1,98%	5.150	2,37%	0,23%
19	Fiat UNO	752	643	922	16,95%	-18,44%	5.038	1,94%	4.565	2,10%	10,36%
20	Toyota COROLLA	668	683	718	-2,20%	-6,96%	4.903	1,89%	4.386	2,02%	11,79%
21	Honda FIT	627	286	581	119,23%	7,92%	4.657	1,79%	4.812	2,22%	-3,22%
22	Peugeot 307	521	650	529	-19,85%	-1,51%	4.391	1,69%	5.090	2,34%	-13,73%
23	Citroen C4	924	738	540	25,20%	71,11%	4.256	1,64%	5.030	2,32%	-15,39%
24	Volkswagen FOX/CROSSFOX	1.131	608	1.011	86,02%	11,87%	3.937	1,51%	3.842	1,77%	2,47%
25	Chevrolet MERIVA	648	463	424	39,96%	52,83%	3.853	1,48%	3.337	1,54%	15,46%
26	Renault SYMBOL	633	660	545	-4,09%	16,15%	3.827	1,47%	2.504	1,15%	52,84%
27	Suzuki FUN	400	370	391	8,11%	2,30%	3.768	1,45%	1.870	0,86%	101,50%
28	Fiat PALIO WEEKEND	528	394	446	34,01%	18,39%	3.625	1,39%	2.851	1,31%	27,15%
29	Renault LOGAN	874	420	327	108,10%	167,28%	3.610	1,39%	2.149	0,99%	67,99%
30	Chevrolet CORSA II	415	540	425	-23,15%	-2,35%	3.255	1,25%	3.367	1,55%	-3,33%
31	Renault MEGANE II	318	508	758	-37,40%	-58,05%	3.113	1,20%	2.748	1,27%	13,28%
32	Chevrolet ASTRA	386	361	323	6,93%	19,50%	3.099	1,19%	4.365	2,01%	-29,00%
33	Honda CITY	393		366	N/D	7,38%	3.062	1,18%		0,00%	N/D
34	Renault KANGOO	495	365	327	35,62%	51,38%	3.041	1,17%	2.786	1,28%	9,15%
35	Citroen C3	582	599	285	-2,84%	104,21%	3.038	1,17%	2.485	1,14%	22,25%
36	Nissan TIIDA	442	202	326	118,81%	35,58%	2.979	1,15%	1.553	0,72%	91,82%
37	Volkswagen VENTO	518	440	427	17,73%	21,31%	2.868	1,10%	2.469	1,14%	16,16%
38	Chevrolet CLASSIC	1.844		965	N/D	91,09%	2.810	1,08%		0,00%	N/D
39	Peugeot 206	419	487	302	-13,96%	38,74%	2.720	1,05%	2.428	1,12%	12,03%
40	Chevrolet VECTRA	302	167	301	80,84%	0,33%	2.000	0,77%	1.338	0,62%	49,48%
41	Ford FOCUS	117	624	157	-81,25%	-25,48%	1.819	0,70%	3.429	1,58%	-46,95%
42	Citroen PICASSO	329	205	245	60,49%	34,29%	1.714	0,66%	1.356	0,62%	26,40%
43	Chevrolet CORSA SW	117	503	168	-76,74%	-30,36%	1.692	0,65%	2.220	1,02%	-23,78%
44	Fiat IDEA	172	248	204	-30,65%	-15,69%	1.451	0,56%	1.216	0,56%	19,33%
45	Fiat LINEA	170	44	141	286,36%	20,57%	1.228	0,47%	494	0,23%	148,58%
46	Dodge JOURNEY	225	33	149	581,82%	51,01%	1.167	0,45%	402	0,19%	190,30%
47	Honda CIVIC	176	207	148	-14,98%	18,92%	1.163	0,45%	1.858	0,86%	-37,41%
48	Chevrolet ZAFIRA	160	111	167	44,14%	-4,19%	1.080	0,42%	716	0,33%	50,84%
49	Peugeot PARTNER	292	174	155	67,82%	88,39%	1.001	0,38%	915	0,42%	9,40%
50	Volkswagen GOL COUNTRY	205	165	186	24,24%	10,22%	978	0,38%	1.363	0,63%	-28,25%
51	Otros	2.296	2.208	2.321	3,99%	-1,08%	13.173	5,06%	18.359	8,46%	-28,25%
Total		40.204	34.019	38.613			260.095	1	217.133		

Autos - Participacion por Segmento





Patentamientos por Ranking de Livianos y Pesados - Mercado Total

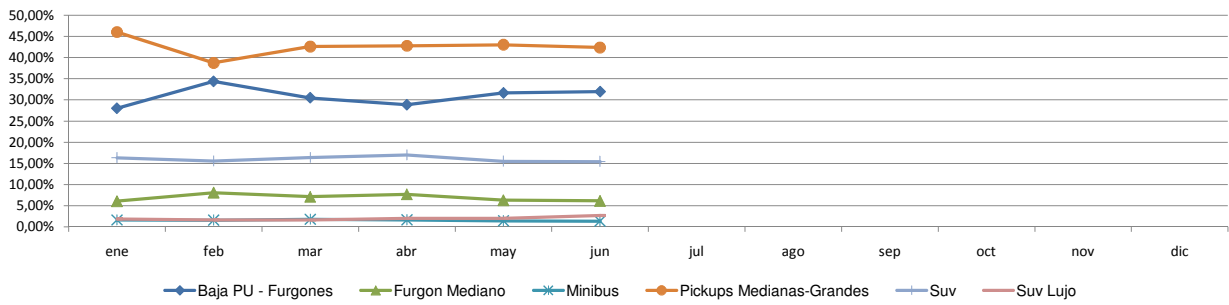
Rank.	Comercial Liviano										
	Modelo	jun/10 (a)	jun/09 (b)	may/10 (c)	Var a-b	Var a-c	Ac. 10	Part %	Ac. 09	Part %	Var 10-09
1	Toyota HILUX	1.513	1.784	1.488	-15,19%	1,68%	10.461	16,91%	10.333	20,49%	1,24%
2	Ford RANGER	940	890	1.119	5,62%	-16,00%	6.878	11,12%	5.178	10,27%	32,83%
3	Renault KANGOO FURGON	677	803	756	-15,69%	-10,45%	4.610	7,45%	4.387	8,70%	5,08%
4	Chevrolet S-10	723	506	610	42,89%	18,52%	4.546	7,35%	3.219	6,38%	41,22%
5	Fiat FIORINO	700	477	732	46,75%	-4,37%	4.129	6,68%	2.703	5,36%	52,76%
6	Peugeot PARTNER FURGON	698	444	462	57,21%	51,08%	3.001	4,85%	2.976	5,90%	0,84%
7	Volkswagen SAVEIRO	493	349	554	41,26%	-11,01%	2.780	4,49%	1.825	3,62%	52,33%
8	Volkswagen AMAROK	549		579	N/D	-5,18%	1.857	3,00%		0,00%	N/D
9	Citroen BERLINGO FURGON	283	202	143	40,10%	97,90%	1.694	2,74%	1.856	3,68%	-8,73%
10	Mercedes Benz SPRINTER	252	239	272	5,44%	-7,35%	1.658	2,68%	1.462	2,90%	13,41%
11	Honda CRV	360	280	302	28,57%	19,21%	1.596	2,58%	1.766	3,50%	-9,63%
12	Renault MASTER	192	303	247	-36,63%	-22,27%	1.546	2,50%	1.329	2,64%	16,33%
13	Fiat STRADA	247	78	275	216,67%	-10,18%	1.541	2,49%	569	1,13%	170,83%
14	Toyota HILUX SW4	167	140	172	19,29%	-2,91%	1.148	1,86%	1.179	2,34%	-2,63%
15	Ford F 100	152	94	196	61,70%	-22,45%	1.056	1,71%	941	1,87%	12,22%
16	Chery TIGGO	108	163	100	-33,74%	8,00%	963	1,56%	630	1,25%	52,86%
17	Toyota RAV 4	137	82	123	67,07%	11,38%	840	1,36%	753	1,49%	11,55%
18	Nissan FRONTIER	297	20	256	1385,00%	16,02%	813	1,31%	179	0,35%	354,19%
19	Hyundai TUCSON	49	58	99	-15,52%	-50,51%	771	1,25%	521	1,03%	47,98%
20	Fiat UNO	87	62	100	40,32%	-13,00%	560	0,91%	381	0,76%	46,98%
21	Otros	1.600	1.249	1.528	28,10%	4,71%	9.409	15,21%	8.247	16,35%	14,09%
Total		10.224	8.223	10.113			61.857	1	50.434		

Rank.	Comercial Pesado										
	Modelo	jun/10 (a)	jun/09 (b)	may/10 (c)	Var a-b	Var a-c	Ac. 10	Part %	Ac. 09	Part %	Var 10-09
1	Mercedes Benz 1418	133	62	78	114,52%	70,51%	726	8,89%	459	6,47%	58,17%
2	Iveco 170 E	164	65	139	152,31%	17,99%	576	7,06%	354	4,99%	62,71%
3	Ford CARGO 1722 E	84	64	62	31,25%	35,48%	554	6,79%	394	5,56%	40,61%
4	Ford F-4000	41	55	40	-25,45%	2,50%	347	4,25%	312	4,40%	11,22%
5	Mercedes Benz L-1624	34	78	44	-56,41%	-22,73%	321	3,93%	440	6,21%	-27,05%
6	Mercedes Benz BMO 368	41		57	N/D	-28,07%	314	3,85%		0,00%	N/D
7	Mercedes Benz 710	29	20	26	45,00%	11,54%	235	2,88%	188	2,65%	25,00%
8	Volkswagen 17220	45	22	34	104,55%	32,35%	221	2,71%	210	2,96%	5,24%
9	Scania G340	39	19	27	105,26%	44,44%	190	2,33%	192	2,71%	-1,04%
10	Mercedes Benz ATEGO 1725	31	27	42	14,81%	-26,19%	187	2,29%	204	2,88%	-8,33%
11	Iveco 450 E	21	23	39	-8,70%	-46,15%	183	2,24%	102	1,44%	79,41%
12	Mercedes Benz LS 1634	21	43	40	-51,16%	-47,50%	176	2,16%	204	2,88%	-13,73%
13	Mercedes Benz OF 1722	6	37	38	-83,78%	-84,21%	154	1,89%	127	1,79%	21,26%
14	Ford CARGO 712	25	17	24	47,06%	4,17%	144	1,76%	90	1,27%	60,00%
15	Volkswagen 19320	27	10	21	170,00%	28,57%	143	1,75%	73	1,03%	95,89%
16	Agrale MT12	28	12	12	133,33%	133,33%	141	1,73%	198	2,79%	-28,79%
17	Iveco 490 S	9	18	25	-50,00%	-64,00%	137	1,68%	107	1,51%	28,04%
18	Volkswagen 13180	29	9	13	222,22%	123,08%	136	1,67%	99	1,40%	37,37%
19	Ford CARGO 1517 E	18	26	23	-30,77%	-21,74%	125	1,53%	118	1,66%	5,93%
20	Agrale MT15	22	11	9	100,00%	144,44%	117	1,43%	11	0,16%	963,64%
21	Otros	503	519	517	-3,08%	-2,71%	3.037	37,20%	3.208	45,25%	-5,33%
Total		1.350	1.137	1.310			8.164	1	7.090		

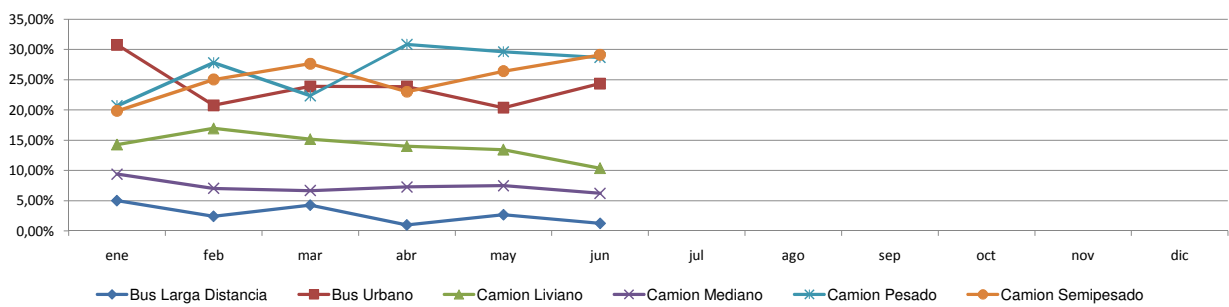


Patentamientos por Ranking de Livianos y Pesados - Mercado Total

Comercial Liviano



Comercial Pesado





Patentamientos por Provincias y Tipos -

Distrito	Automovil+Comercial Liviano						Comercial Pesado+Otros Pesados						Mercado Total							
	jun/10 (a)	jun/09 (b)	may/10 (c)	Var a-b	Var a-c	Ac. 10	Ac. 09	Var 10-09	jun/10 (a)	jun/09 (b)	may/10 (c)	Var a-b	Var a-c	Ac. 10	Ac. 09	Var 10-09	Ac. 10	Ac. 09	Var 10-09	Part %
CAPITAL FEDERAL	9.461	7.519	9.171	25,83%	3,16%	56.805	45.673	24,37%	600	462	544	29,87%	10,29%	3.585	2.589	38,47%	60.390	48.262	25,13%	18,03%
GRAN BUENOS AIRES	9.115	7.383	8.639	23,46%	5,51%	57.515	46.062	24,86%	215	190	193	13,16%	11,40%	1.257	1.075	16,93%	58.772	47.137	24,68%	17,55%
BUENOS AIRES	7.790	6.430	7.528	21,15%	3,48%	49.196	41.249	19,27%	272	224	251	21,43%	8,37%	1.520	1.371	10,87%	50.716	42.620	19,00%	15,14%
CORDOBA	5.176	4.890	4.897	5,85%	5,70%	32.734	28.985	12,93%	159	141	127	12,77%	25,20%	936	1.032	-9,30%	33.670	30.017	12,17%	10,05%
SANTA FE	4.157	3.697	3.780	12,44%	9,97%	26.191	22.639	15,69%	150	152	155	-1,32%	-3,23%	1.069	955	11,94%	27.260	23.594	15,54%	8,14%
MENDOZA	1.839	1.631	1.948	12,75%	-5,60%	12.344	9.762	26,45%	95	79	87	20,25%	9,20%	514	511	0,59%	12.858	10.273	25,16%	3,84%
ENTRE RIOS	1.275	934	1.209	36,51%	5,46%	8.202	6.363	28,90%	89	63	87	41,27%	2,30%	478	406	17,73%	8.680	6.769	28,23%	2,59%
TUCUMAN	1.127	819	1.102	37,61%	2,27%	7.267	5.256	38,26%	70	46	81	52,17%	-13,58%	348	327	6,42%	7.615	5.583	36,40%	2,27%
CORRIENTES	1.091	665	996	64,06%	9,54%	6.898	5.073	35,97%	79	67	107	17,91%	-26,17%	511	459	11,33%	7.409	5.532	33,93%	2,21%
CHUBUT	1.044	891	1.004	17,17%	3,98%	6.791	6.656	2,03%	43	40	32	7,50%	34,38%	257	295	-12,88%	7.048	6.951	1,40%	2,10%
SALTA	994	767	961	29,60%	3,43%	6.415	5.492	16,81%	72	74	72	-2,70%	0,00%	425	448	-5,13%	6.840	5.940	15,15%	2,04%
NEUQUEN	856	810	889	5,68%	-3,71%	6.175	5.504	12,19%	39	45	20	-13,33%	95,00%	216	303	-28,71%	6.391	5.807	10,06%	1,91%
CHACO	584	815	612	-28,34%	-4,58%	4.877	5.638	-13,50%	37	43	30	-13,95%	23,33%	250	324	-22,84%	5.127	5.962	-14,01%	1,53%
SANTA CRUZ	695	674	765	3,12%	-9,15%	4.924	4.711	4,52%	37	25	30	48,00%	23,33%	159	191	-16,75%	5.083	4.902	3,69%	1,52%
RIO NEGRO	693	650	685	6,62%	1,17%	4.761	3.862	23,28%	16	16	18	0,00%	-11,11%	111	112	-0,89%	4.872	3.974	22,60%	1,45%
JUJUY	593	461	596	28,63%	-0,50%	3.974	2.990	32,91%	72	56	123	28,57%	-41,46%	456	296	54,05%	4.430	3.286	34,81%	1,32%
MISIONES	634	470	603	34,89%	5,14%	4.220	3.127	34,95%	24	23	19	4,35%	26,32%	135	127	6,30%	4.355	3.254	33,84%	1,30%
SAN JUAN	496	433	570	14,55%	-12,98%	3.496	2.918	19,81%	25	21	26	19,05%	-3,85%	166	124	33,87%	3.662	3.042	20,38%	1,09%
LA PAMPA	512	395	435	29,62%	17,70%	3.261	2.910	12,06%	12	12	9	0,00%	33,33%	78	102	-23,53%	3.339	3.012	10,86%	1,00%
SANTIAGO DEL ESTERO	464	361	459	28,53%	1,09%	3.213	2.614	22,92%	20	28	34	-28,57%	-41,18%	119	114	4,39%	3.332	2.728	22,14%	0,99%
FORMOSA	430	326	416	31,90%	3,37%	3.011	2.231	34,96%	16	20	17	-20,00%	-5,88%	114	96	18,75%	3.125	2.327	34,29%	0,93%
TIERRA DEL FUEGO	461	334	466	38,02%	-1,07%	2.902	2.167	33,92%	25	10	8	150,00%	212,50%	101	75	34,67%	3.003	2.242	33,94%	0,90%
SAN LUIS	418	355	427	17,75%	-2,11%	2.726	2.183	24,87%	17	16	8	6,25%	112,50%	58	88	-34,09%	2.784	2.271	22,59%	0,83%
LA RIOJA	270	238	310	13,45%	-12,90%	2.054	1.555	32,09%	4	1	10	300,00%	-60,00%	51	41	24,39%	2.105	1.596	31,89%	0,63%
CATAMARCA	254	294	261	-13,61%	-2,68%	2.006	1.948	2,98%	4	9	3	-55,56%	33,33%	27	61	-55,74%	2.033	2.009	1,19%	0,61%



Patentamientos por Provincias y Tipos -

