



Patentamientos por Marcas - Mercado Total

	dic/10(a)	nov/10(b)	dic/09(c)	dic/08(d)	Var a-b	Var a-c	Var a-d	Ac. 10	Ac. 09	Var 10-09
Automovil	30.593	41.817	18.675	15.140	-26,84%	63,82%	102,07%	513.917	403.225	27,45%
Comercial Liviano	6.164	9.672	3.495	3.433	-36,27%	76,37%	79,55%	121.471	90.294	34,53%
Comercial Pesado	1.176	1.691	706	852	-30,46%	66,57%	38,03%	17.552	13.515	29,87%
Otros Pesados	663	914	406	466	-27,46%	63,30%	42,27%	9.651	7.877	22,52%
Total	38.596	54.094	23.282	19.891	-28,65%	65,78%	94,04%	662.591	514.911	28,68%
Prom. diario	1.930	2.576	1.225	1.105				2.693	2.110	
Dias habiles	20	21	19	18				246	244	

Patentamientos por origen	
	dic/10 Ac. 10
Importados	24.418 406.188
Nacionales	14.179 256.404



■ Importados ■ Nacionales

Patentamientos Mensuales

	ene	feb	mar	abr	may	jun	jul	ago	sep	oct	nov	dic
2010	78.466	44.760	57.287	50.947	50.820	54.810	57.571	57.403	64.053	53.784	54.094	38.596
2009	73.927	39.075	41.301	40.534	40.147	44.103	46.632	42.434	46.020	39.963	37.493	23.282
Var% 10-09	6,14%	14,55%	38,71%	25,69%	26,58%	24,28%	23,46%	35,28%	39,19%	34,58%	44,28%	65,78%
2008	85.811	46.476	44.277	56.149	56.809	49.082	58.414	51.110	56.197	51.035	35.528	19.891
2007	82.552	38.841	47.379	41.626	47.231	42.139	50.181	54.285	48.857	49.497	40.640	24.527

Patentamientos por Marcas - Totales

Marca	dic/10(a)	Part %	dic/09(c)	Part %	nov/10(e)	Part %	Var a-c	Var a-e	ene - dic	Part %	ene - dic	Part %	2010-2009
Volkswagen	9.246	24,33%	7.271	31,73%	10.514	19,73%	27,16%	-12,06%	127.139	19,44%	103.535	20,39%	22,80%
Chevrolet	6.431	16,92%	3.340	14,58%	7.386	13,86%	92,54%	-12,93%	101.287	15,49%	71.611	14,10%	41,44%
Renault	5.022	13,22%	1.942	8,48%	8.510	15,97%	158,60%	-40,99%	82.737	12,65%	61.266	12,07%	35,05%
Ford	5.578	14,68%	2.355	10,28%	5.909	11,09%	136,86%	-5,60%	81.139	12,41%	67.279	13,25%	20,60%
Fiat	2.678	7,05%	1.918	8,37%	5.420	10,17%	39,62%	-50,59%	65.775	10,06%	49.672	9,78%	32,42%
Peugeot	2.909	7,66%	1.807	7,89%	4.421	8,30%	60,99%	-34,20%	56.019	8,57%	45.744	9,01%	22,46%
Toyota	1.006	2,65%	895	3,91%	2.121	3,98%	12,40%	-52,57%	31.024	4,74%	29.117	5,73%	6,55%
Citroen	990	2,61%	742	3,24%	1.707	3,20%	33,42%	-42,00%	23.505	3,59%	20.322	4,00%	15,66%
Honda	664	1,75%	493	2,15%	1.695	3,18%	34,69%	-60,83%	20.657	3,16%	15.085	2,97%	36,94%
Mercedes Benz	593	1,56%	369	1,61%	896	1,68%	60,70%	-33,82%	12.202	1,87%	10.392	2,05%	17,42%
Nissan	595	1,57%	200	0,87%	1.039	1,95%	197,50%	-42,73%	10.017	1,53%	4.071	0,80%	146,06%
Suzuki	526	1,38%	369	1,61%	483	0,91%	42,55%	8,90%	7.353	1,12%	6.775	1,33%	8,53%
Hyundai	215	0,57%	160	0,70%	471	0,88%	34,38%	-54,35%	5.494	0,84%	3.499	0,69%	57,02%
Iveco	399	1,05%	200	0,87%	468	0,88%	99,50%	-14,74%	4.091	0,63%	2.408	0,47%	69,89%
Audi	96	0,25%	86	0,38%	209	0,39%	11,63%	-54,07%	3.939	0,60%	2.676	0,53%	47,20%
BMW	91	0,24%	72	0,31%	261	0,49%	26,39%	-65,13%	3.485	0,53%	2.184	0,43%	59,57%
Kia	84	0,22%	100	0,44%	303	0,57%	-16,00%	-72,28%	2.910	0,45%	2.187	0,43%	33,06%
Dodge	168	0,44%	57	0,25%	261	0,49%	194,74%	-35,63%	2.888	0,44%	1.296	0,26%	122,84%
Chery	155	0,41%	68	0,30%	362	0,68%	127,94%	-57,18%	2.494	0,38%	1.263	0,25%	97,47%
Scania	66	0,17%	48	0,21%	108	0,20%	37,50%	-38,89%	1.381	0,21%	923	0,18%	49,62%
Mitsubishi	35	0,09%	78	0,34%	76	0,14%	-55,13%	-53,95%	1.119	0,17%	773	0,15%	44,76%
Chrysler	61	0,16%	29	0,13%	116	0,22%	110,34%	-47,41%	1.049	0,16%	949	0,19%	10,54%
Jeep	71	0,19%	66	0,29%	76	0,14%	7,58%	-6,58%	1.030	0,16%	918	0,18%	12,20%
Agrale	30	0,08%	26	0,11%	119	0,22%	15,38%	-74,79%	897	0,14%	620	0,12%	44,68%
Randon	58	0,15%	27	0,12%	84	0,16%	114,81%	-30,95%	711	0,11%	516	0,10%	37,79%
Subaru	51	0,13%	15	0,07%	70	0,13%	240,00%	-27,14%	688	0,11%	359	0,07%	91,64%
Volvo	48	0,13%	50	0,22%	48	0,09%	-4,00%	0,00%	640	0,10%	581	0,11%	10,15%
Seat	24	0,06%	35	0,15%	48	0,09%	-31,43%	-50,00%	625	0,10%	630	0,12%	-0,79%
Mini	15	0,04%	4	0,02%	26	0,05%	275,00%	-42,31%	477	0,07%	356	0,07%	33,99%
Puma de Tat	30	0,08%	33	0,14%	13	0,02%	-9,09%	130,77%	308	0,05%	197	0,04%	56,35%
Alfa Romeo	24	0,06%	1	0,00%	18	0,03%	2300,00%	33,33%	286	0,04%	38	0,01%	652,63%
MONTENEGRO	8	0,02%	6	0,03%	17	0,03%	33,33%	-52,94%	206	0,03%	190	0,04%	8,42%
Porsche	3	0,01%	5	0,02%	6	0,01%	-40,00%	-50,00%	96	0,01%	82	0,02%	17,07%
Land Rover	7	0,02%	21	0,09%	10	0,02%	-66,67%	-30,00%	90	0,01%	144	0,03%	-37,50%
Montesur	3	0,01%	3	0,01%	6	0,01%	0,00%	-50,00%	62	0,01%	39	0,01%	58,97%
Smart	16	0,04%		0,00%		0,00%	N/D	N/D	17	0,00%		0,00%	N/D
Materfer	4	0,01%	19	0,08%		0,00%	-78,95%	N/D	15	0,00%	57	0,01%	-73,68%
Jaguar		0,00%	1	0,00%	1	0,00%	-100,00%	-100,00%	9	0,00%	5	0,00%	80,00%
Mack		0,00%	1	0,00%	2	0,00%	-100,00%	-100,00%	9	0,00%	12	0,00%	-25,00%
Ferrari		0,00%		0,00%		0,00%	N/D	N/D	5	0,00%	5	0,00%	0,00%
Maserati		0,00%		0,00%		0,00%	N/D	N/D	1	0,00%		0,00%	N/D
Lexus		0,00%		0,00%		0,00%	N/D	N/D		0,00%	1	0,00%	-100,00%
Total	38.000		22.912		53.280				653.876		507.777		



Patentamientos por Ranking de Livianos y Pesados - Mercado Total

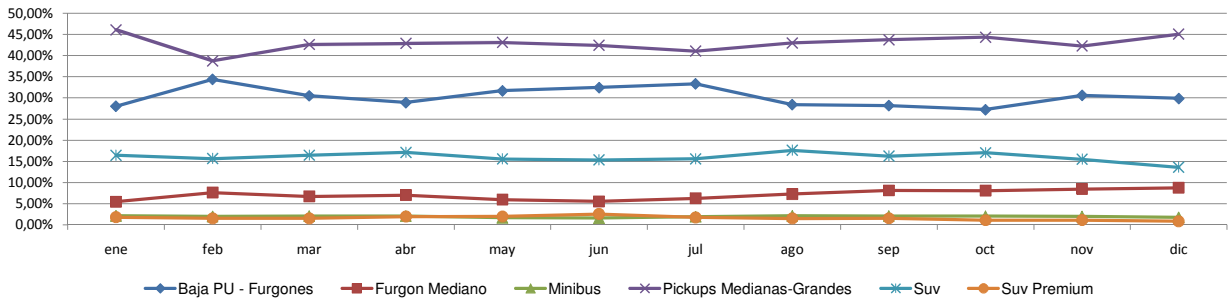
Rank.	Comercial Liviano										
	Modelo	dic/10 (a)	dic/09 (b)	nov/10 (c)	Var a-b	Var a-c	Ac. 10	Part %	Ac. 09	Part %	Var 10-09
1	Toyota HILUX	625	556	1.288	12,41%	-51,48%	18.244	15,02%	18.202	20,16%	0,23%
2	Ford RANGER	659	351	715	87,75%	-7,83%	12.433	10,24%	9.609	10,64%	29,39%
3	Renault KANGOO FURGON	672	352	958	90,91%	-29,85%	9.952	8,19%	8.593	9,52%	15,82%
4	Chevrolet S-10	347	182	451	90,66%	-23,06%	8.172	6,73%	5.657	6,27%	44,46%
5	Fiat FIORINO	281	220	565	27,73%	-50,27%	7.563	6,23%	5.044	5,59%	49,94%
6	Volkswagen AMAROK	892	43	1.120	1974,42%	-20,36%	7.560	6,22%	43	0,05%	17481,40%
7	Peugeot PARTNER FURGON	400	257	601	55,64%	-33,44%	6.659	5,48%	5.362	5,94%	24,19%
8	Volkswagen SAVEIRO	154	54	194	185,19%	-20,62%	4.044	3,33%	2.898	3,21%	39,54%
9	Honda CRV	157	65	403	141,54%	-61,04%	3.685	3,03%	2.914	3,23%	26,46%
10	Renault MASTER	200	75	310	166,67%	-35,48%	3.408	2,81%	2.358	2,61%	44,53%
11	Fiat STRADA	127	63	364	101,59%	-65,11%	3.292	2,71%	1.272	1,41%	158,81%
12	Mercedes Benz SPRINTER	163	114	263	42,98%	-38,02%	3.114	2,56%	2.654	2,94%	17,33%
13	Citroen BERLINGO FURGON	93	120	124	-22,50%	-25,00%	2.806	2,31%	3.013	3,34%	-6,87%
14	Nissan FRONTIER	120	2	275	5900,00%	-56,36%	2.344	1,93%	222	0,25%	955,86%
15	Toyota HILUX SW4	56	44	105	27,27%	-46,67%	2.017	1,66%	1.926	2,13%	4,72%
16	Ford F 100	81	79	140	2,53%	-42,14%	1.973	1,62%	1.610	1,78%	22,55%
17	Chery TIGGO	74	68	159	8,82%	-53,46%	1.886	1,55%	1.263	1,40%	49,33%
18	Toyota RAV 4	54	31	102	74,19%	-47,06%	1.569	1,29%	1.069	1,18%	46,77%
19	Iveco DAILY	117	97	118	20,62%	-0,85%	1.114	0,92%	878	0,97%	26,88%
20	Fiat UNO	80	50	81	60,00%	-1,23%	1.004	0,83%	749	0,83%	34,05%
21	Otros	812	672	1.336	20,83%	-39,22%	18.632	15,34%	14.958	16,57%	24,56%
Total		6.164	3.495	9.672			121.471	1	90.294		

Rank.	Comercial Pesado										
	Modelo	dic/10 (a)	dic/09 (b)	nov/10 (c)	Var a-b	Var a-c	Ac. 10	Part %	Ac. 09	Part %	Var 10-09
1	Iveco 170 E	191	49	244	289,80%	-21,72%	1.922	10,98%	723	5,35%	165,84%
2	Ford CARGO 1722 E	83	33	119	151,52%	-30,25%	1.144	6,53%	829	6,13%	38,00%
3	Mercedes Benz 1418	28	29	54	-3,45%	-48,15%	1.134	6,48%	824	6,10%	37,62%
4	Ford F-4000	38	33	69	15,15%	-44,93%	758	4,33%	614	4,54%	23,45%
5	Mercedes Benz 1618L	24		27	N/D	-11,11%	668	3,81%	5	0,04%	13260,00%
6	Volkswagen 17220	47	18	71	161,11%	-33,80%	522	2,98%	378	2,80%	38,10%
7	Mercedes Benz 710	28	7	43	300,00%	-34,88%	453	2,59%	336	2,49%	34,82%
8	Mercedes Benz L-1624	24	15	13	60,00%	84,62%	449	2,56%	714	5,28%	-37,11%
9	Iveco 450 E	17	25	41	-32,00%	-58,54%	420	2,40%	294	2,18%	42,86%
10	Mercedes Benz ATEGO 1725	25	10	36	150,00%	-30,56%	416	2,38%	414	3,06%	0,48%
11	Mercedes Benz LS 1634	23	6	44	283,33%	-47,73%	373	2,13%	321	2,38%	16,20%
12	Scania G340	16	14	37	14,29%	-56,76%	371	2,12%	315	2,33%	17,78%
13	Volkswagen 13180	26	20	35	30,00%	-25,71%	326	1,86%	223	1,65%	46,19%
14	Volkswagen 19320	12	12	39	0,00%	-69,23%	302	1,72%	147	1,09%	105,44%
15	Agrale MT12	7	3	21	133,33%	-66,67%	295	1,68%	287	2,12%	2,79%
16	Agrale MT15	4	6	64	-33,33%	-93,75%	277	1,58%	58	0,43%	377,59%
17	Ford CARGO 1517 E	27	11	33	145,45%	-18,18%	275	1,57%	220	1,63%	25,00%
18	Mercedes Benz 1624	21		46	N/D	-54,35%	273	1,56%		0,00%	N/D
19	Ford CARGO 712	11	9	24	22,22%	-54,17%	272	1,55%	205	1,52%	32,68%
20	Mercedes Benz Of 1722	7	6	33	16,67%	-78,79%	269	1,54%	298	2,21%	-9,73%
21	Otros	515	400	591	28,75%	-12,86%	6.592	37,64%	6.309	46,68%	4,49%
Total		1.174	706	1.684			17.511	1	13.514		

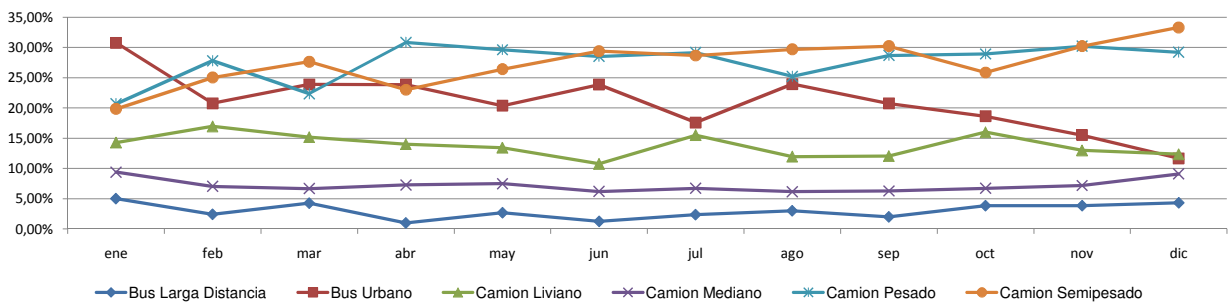


Patentamientos por Ranking de Livianos y Pesados - Mercado Total

Comercial Liviano



Comercial Pesado





Patentamientos por Provincias y Tipos -

Distrito	Automovil+Comercial Liviano							Comercial Pesado+Otros Pesados							Mercado Total					
	dic/10 (a)	dic/09 (b)	nov/10 (c)	Var a-b	Var a-c	Ac. 10	Ac. 09	Var 10-09	dic/10 (a)	dic/09 (b)	nov/10 (c)	Var a-b	Var a-c	Ac. 10	Ac. 09	Var 10-09	Ac. 10	Ac. 09	Var 10-09	Part %
CAPITAL FEDERAL	8.365	5.876	9.984	42,36%	-16,22%	115.133	90.902	26,66%	580	333	719	74,17%	-19,33%	7.783	5.195	49,82%	122.916	96.097	27,91%	18,55%
GRAN BUENOS AIRES	7.298	4.641	9.875	57,25%	-26,10%	114.895	88.360	30,03%	141	71	210	98,59%	-32,86%	2.550	2.053	24,21%	117.446	90.413	29,90%	17,73%
BUENOS AIRES	5.233	2.922	7.666	79,09%	-31,74%	97.492	74.698	30,51%	211	143	335	47,55%	-37,01%	3.195	2.511	27,24%	100.687	77.209	30,41%	15,20%
CORDOBA	3.385	1.640	4.787	106,40%	-29,29%	63.719	51.806	23,00%	135	91	184	48,35%	-26,63%	1.970	1.851	6,43%	65.689	53.657	22,42%	9,91%
SANTA FE	2.872	1.391	4.117	106,47%	-30,24%	52.324	40.974	27,70%	180	72	258	150,00%	-30,23%	2.375	1.698	39,87%	54.699	42.672	28,18%	8,26%
MENDOZA	984	659	1.701	49,32%	-42,15%	23.610	17.697	33,41%	33	56	126	-41,07%	-73,81%	1.105	1.107	-0,18%	24.715	18.804	31,43%	3,73%
ENTRE RIOS	870	379	1.279	129,55%	-31,98%	16.264	11.243	44,66%	62	33	113	87,88%	-45,13%	1.001	747	34,00%	17.265	11.990	43,99%	2,61%
TUCUMAN	604	363	1.007	66,39%	-40,02%	13.746	9.685	41,93%	73	24	63	204,17%	15,87%	754	569	32,51%	14.500	10.254	41,41%	2,19%
CORRIENTES	619	302	1.049	104,97%	-40,99%	12.993	8.620	50,73%	51	38	107	34,21%	-52,34%	1.077	752	43,22%	14.070	9.372	50,13%	2,12%
CHUBUT	635	506	1.179	25,49%	-46,14%	13.032	11.368	14,64%	38	25	34	52,00%	11,76%	447	590	-24,24%	13.479	11.958	12,72%	2,03%
SALTA	707	493	985	43,41%	-28,22%	12.442	9.885	25,87%	62	28	65	121,43%	-4,62%	877	696	26,01%	13.319	10.581	25,88%	2,01%
NEUQUEN	620	456	983	35,96%	-36,93%	11.799	9.765	20,83%	42	17	40	147,06%	5,00%	434	493	-11,97%	12.233	10.258	19,25%	1,85%
SANTA CRUZ	623	415	954	50,12%	-34,70%	10.026	8.301	20,78%	24	15	45	60,00%	-46,67%	358	323	10,84%	10.384	8.624	20,41%	1,57%
CHACO	463	263	642	76,05%	-27,88%	9.185	9.204	-0,21%	41	30	39	36,67%	5,13%	459	556	-17,45%	9.644	9.760	-1,19%	1,46%
RIO NEGRO	519	287	769	80,84%	-32,51%	9.335	7.063	32,17%	14	12	11	16,67%	27,27%	200	176	13,64%	9.535	7.239	31,72%	1,44%
MISIONES	334	172	660	94,19%	-49,39%	8.092	5.488	47,45%	23	17	47	35,29%	-51,06%	333	244	36,48%	8.425	5.732	46,98%	1,27%
JUJUY	407	182	604	123,63%	-32,62%	7.434	5.216	42,52%	52	44	56	18,18%	-7,14%	789	564	39,89%	8.223	5.780	42,27%	1,24%
TIERRA DEL FUEGO	598	352	776	69,89%	-22,94%	6.913	4.578	51,00%	15	9	32	66,67%	-53,13%	264	142	85,92%	7.177	4.720	52,06%	1,08%
SAN JUAN	222	188	380	18,09%	-41,58%	6.421	5.169	24,22%	16	18	35	-11,11%	-54,29%	359	241	48,96%	6.780	5.410	25,32%	1,02%
LA PAMPA	329	153	485	115,03%	-32,16%	6.290	5.187	21,26%	12	5	17	140,00%	-29,41%	174	169	2,96%	6.464	5.356	20,69%	0,98%
SANTIAGO DEL ESTERO	158	119	371	32,77%	-57,41%	5.749	4.340	32,47%	11	18	16	-38,89%	-31,25%	220	234	-5,98%	5.969	4.574	30,50%	0,90%
FORMOSA	244	90	360	171,11%	-32,22%	5.591	3.823	46,25%	10	6	30	66,67%	-66,67%	219	189	15,87%	5.810	4.012	44,82%	0,88%
SAN LUIS	343	173	415	98,27%	-17,35%	5.393	4.046	33,29%	5	4	9	25,00%	-44,44%	98	122	-19,67%	5.491	4.168	31,74%	0,83%
CATAMARCA	187	60	216	211,67%	-13,43%	3.778	3.244	16,46%	4		9	N/D	-55,56%	72	86	-16,28%	3.850	3.330	15,62%	0,58%
LA RIOJA	138	88	245	56,82%	-43,67%	3.732	2.857	30,63%	4	3	5	33,33%	-20,00%	90	84	7,14%	3.822	2.941	29,96%	0,58%



Patentamientos por Provincias y Tipos -

